

SENSITIVITY MAP: ALTERNATIVE 2

Upgrading & Development of an Access Road from the N10/Burgerville District Road (2448) Turn-Off into the Farm Riet Fountain No. 39C and to the Switching Station and Main Transmission Substation on Sun Central Cluster 1 (300 MW) Solar PV Facility between De Aar & Hanover, Emthanjeni Local Municipality, Pixley Ka Seme District Municipality, Northern Cape Province, South Africa.

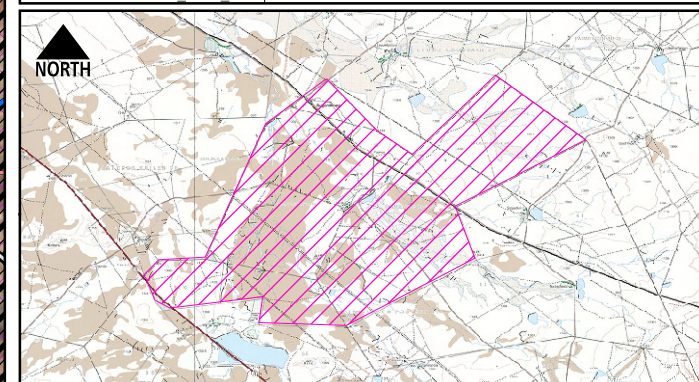
Legend

- ▲ Heritage Site
- Town
- ⊕ Water Storage Tank
- Alternative 2 (District Road)
- 400kva Powerline
- Rivers
- National Road
- Secondary Road
- Alluvial Floodplains
- Large Ephemeral Tributary
- Tributary Buffer
- ▭ Nest Site Buffer
- ▨ NFEPA Wetlands
- ▨ Pondered Flood Occurrence Zone
- ▨ Alternative 2 (District Road) Servitude Area (19m Wide)
- ▨ N10 Servitude Area (35m Wide)
- ▨ Eskom Servitude Area (55m Wide)
- MTS Footprint
- Construction Camp
- Switching Station
- ▨ NPAES Negotiated Focus Areas
- Important Bird Area (Whole Area, not indicated)
- +++ Strategic Water Source Area
- ▭ Consolidated properties of landowner
- Northern Cape Terrestrial CBA's**
- ▨ Critical Biodiversity Area One
- ▨ Critical Biodiversity Area Two
- ▨ Ecological Support Area
- Terrestrial Assessment**
- Very High
- High
- Medium-High
- Medium
- Medium-Low
- Low

DATE: 13/03/2023
 LOCAL AUTHORITY: EMTHANJENI LOCAL MUNICIPALITY
 PLAN NUMBER: DeAar Cluster 1 Access Road Sensitivity Map (Alt2)
 SCALE: 1:70 000
 PREPARED FOR: Ecologes Environmental Consultants
 DRAWN: DIGITAL EARTH
 linda@digitalearth.co.za
 COORDINATE SYSTEM: GCS WGS 1984



0 1 2 Kilometers



APPLICATION SITE

NGI_TOPO50_Mosaic_DEC2015

