









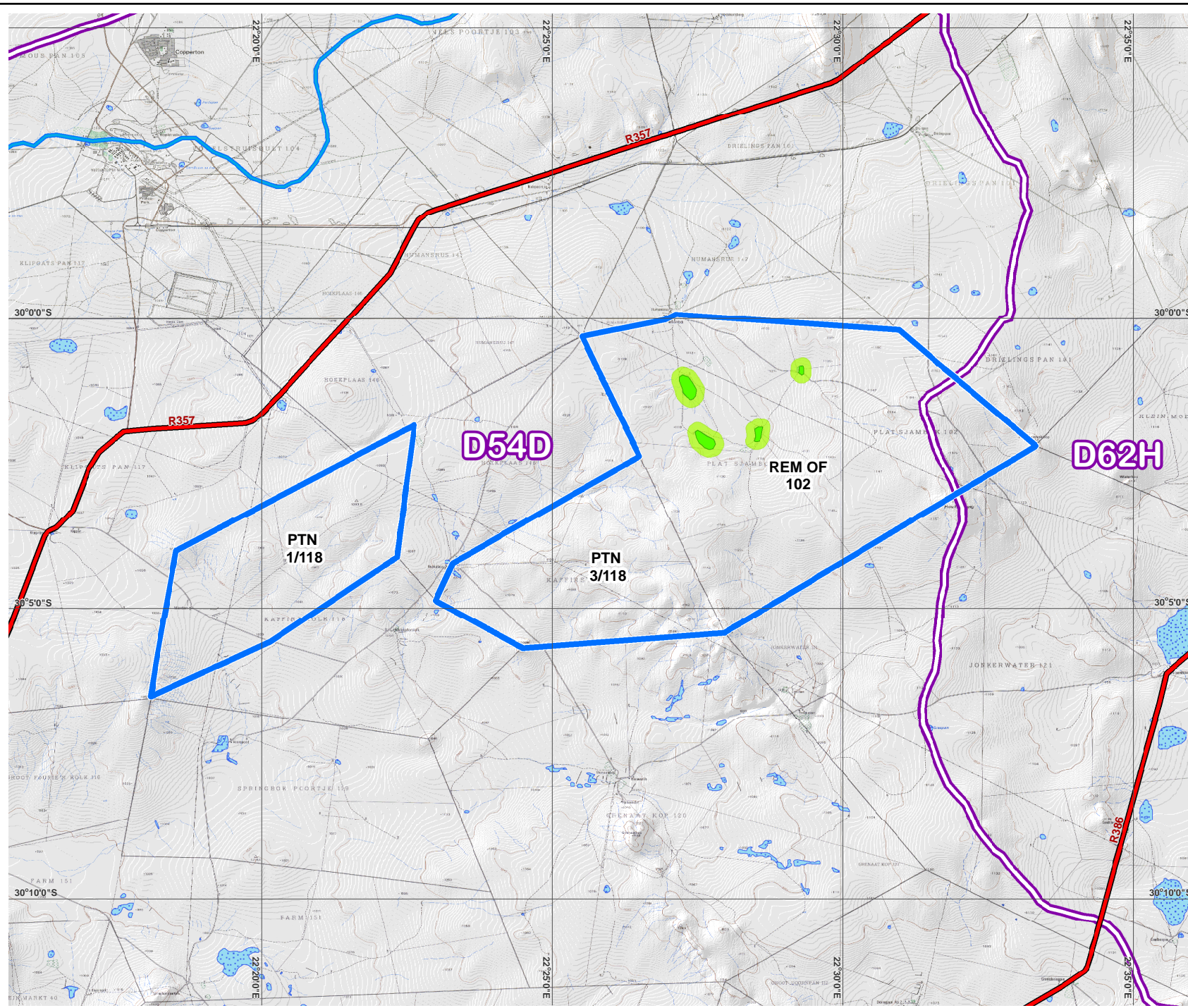
PROPOSED ESTABLISHMENT OF A WINDFARM AND PV PLANT

**PRIESKA SITE:
NORTHERN CAPE
PROVINCE**

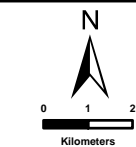
**SURFACE WATER
FEATURES**

Legend

-  Main Roads
-  Application Site
- Surface Water Features**
-  Quaternary Catchment Boundaries
-  Catchment Number
-  Rivers
-  Wetlands
-  Sensitive Pans
-  Sensitive Pan Buffers



SOURCE:
NFEPA, 2011
MAINSTREAM RENEWABLE ENERGY, 2011



SIVEST
ENVIRONMENTAL DIVISION
51 WESSELS ROAD
RIVONIA 2128
JOHANNESBURG
SOUTH AFRICA
Phone: +27 11 798 0600
Fax: +27 11 803 7272
e-mail: info@sivest.co.za

Project No	Map Ref No	Prepared By	Date
10777	10777/P_EIA07	KLS	13/03/2012

"COPYRIGHT IS VESTED IN SIVEST IN TERMS OF THE COPYRIGHT ACT (ACT 98 OF 1978) AND NO USE OR REPRODUCTION OR DUPLICATION THEREOF MAY OCCUR WITHOUT THE WRITTEN CONSENT OF THE AUTHOR"

THIS MAP HAS BEEN PREPARED UNDER THE CONTROLS ESTABLISHED BY THE SIVEST QUALITY MANAGEMENT SYSTEM AND MEETS THE REQUIREMENTS OF THE SETA QUALITY GRADING SYSTEM THAT IS ISO COMPLIANT