

SITE INFORMATION
JAMEAH MOSQUE
 Erf 173650 - 62 Chiappini Str, Bo-Kaap, Cape Town
 Class of occupancy SANS 1040-A, Table 1, M4
 Climate zone SANS 204: 4 - Temperate Coastal
 Site atmospheric corrosivity category BS 9232: C4
 (Building older than 60 years - NHR Act S.34 Permit required - Grade III-B)

Zone CO1
 Occupancy class SANS 1040-A, M4 - Place of Worship

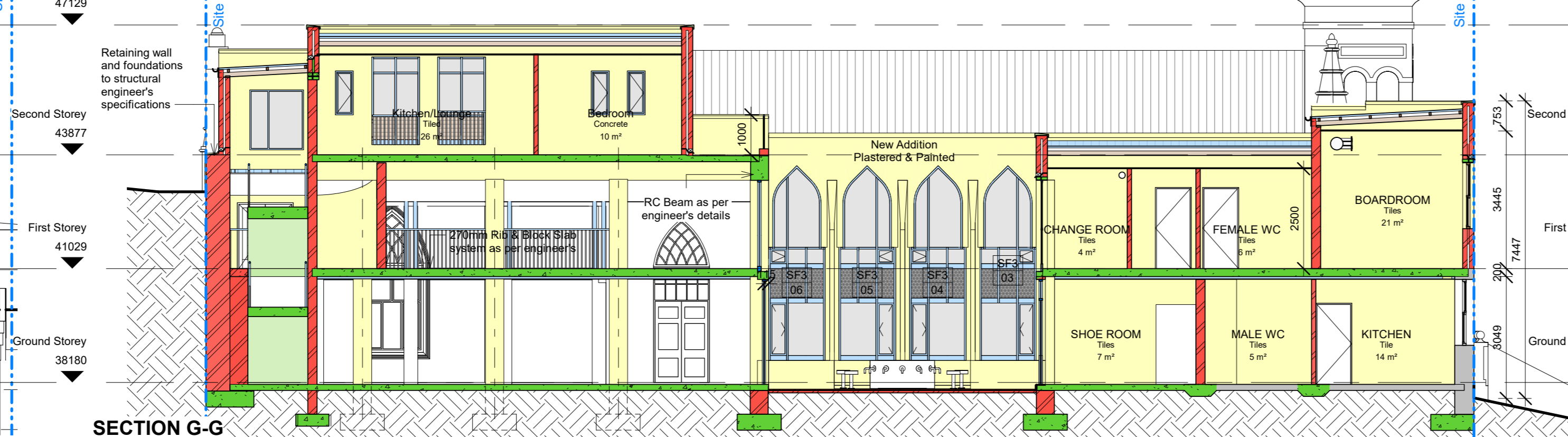
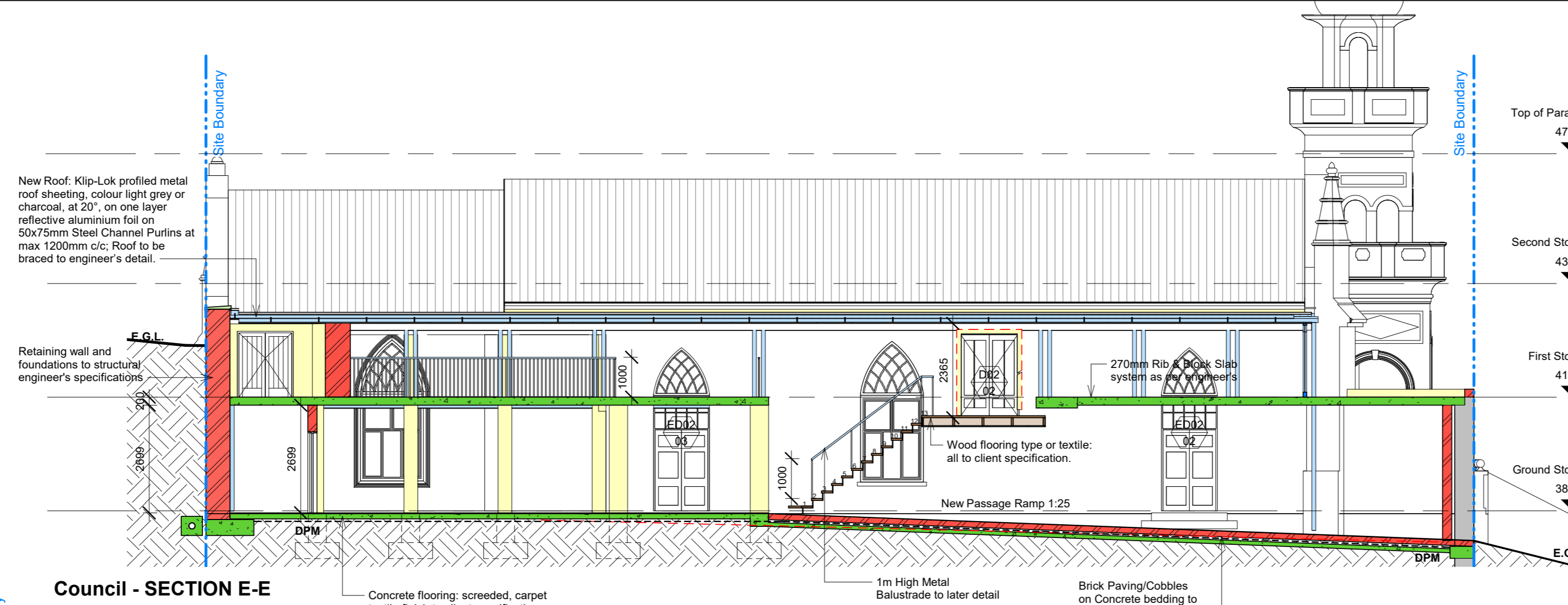
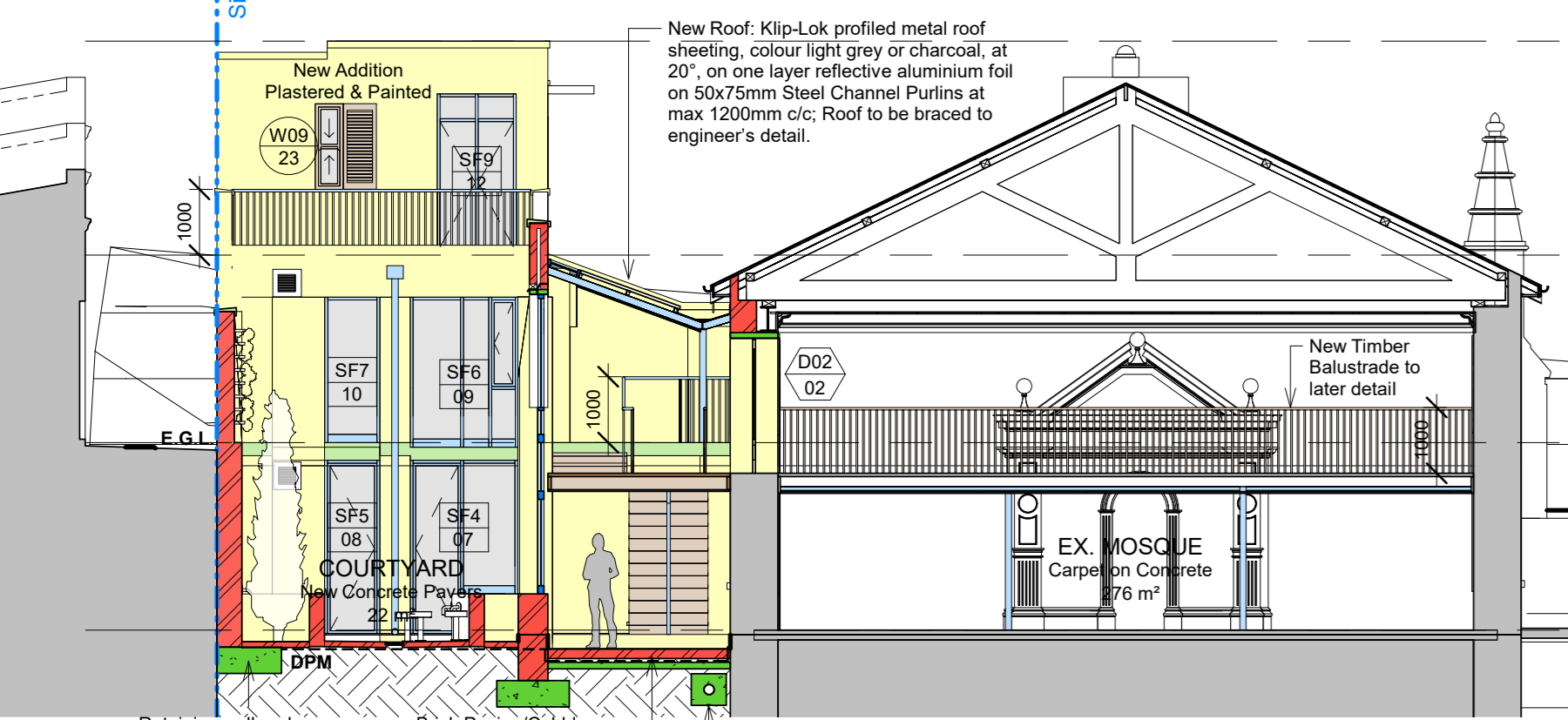
Site Erf Size: 705.09 m²
Coverage (Permissible 60%): Existing 347.84 m²
 Proposed: 574.81 m²
 560.01 m² (Actual 79.4%)

Floor Factor: (Permissible 0.8 = 564.0 m²)
Ground Floor = 550.8 m²
First Floor = 535.1 m²
Second Floor = 57.4 m²
 1143.4 m² (1 : 1.62)

Height Restriction: 12 m from Base Level
 Height value: 38.770 m
Boundary Setback: 0 m (Street and Common)

Part XA Calculations (New Work)
 New Roof Construction - SANS 1040-XX, Climate Zone 4
 Minimum required total R-value = 3.7 m²K/W
 Pitched Roof

Outdoor air (T_{out}) = 0.03
 Mean Roof Sweeping = 0.03
 Roof air space (non-reflective) = 0.18
 Insulation on similar 40mm mineral wool rigid pipe = 2.33
 Plasterboard, gypsum (10mm, 850 kg/m³) = 0.06
 Internal air (T_{in}) = 21.1
Total R-value = 3.78



FENESTRATION
GROUND FLOOR

Window/Door/Type	H (mm)	W (mm)	Area (m ²)	Nr of windows	Total Area (m ²)	U-value (GSA)	Conductance (m ² K/W)	SHGC (GSA)	P	H	P/H	Orientation	Exposure Factor (Table G.4)	SHGC
W001	1500	900	1.35	1	1.35	3.4	5.093	0.66	240	1650	0.145453	NE	0.6	0.62626
W002	2000	1630	3.26	1	3.26	3.4	1.9272	0.66	120	2630	0.045621	NW	0.1	2.23936
W003	2000	1630	3.26	1	3.26	3.4	2.2982	0.66	120	2630	0.045621	NW	0.1	2.81353
W004	2000	1630	3.26	1	3.26	3.4	2.2982	0.66	120	2630	0.045621	NW	0.1	2.81353
W005	2000	1630	3.26	1	3.26	3.4	2.2982	0.66	120	2630	0.045621	NW	0.1	2.81353
W006	2000	1630	3.26	1	3.26	3.4	2.2982	0.66	120	2630	0.045621	NW	0.1	2.81353
W007	2000	1630	3.26	1	3.26	3.4	2.2982	0.66	120	2630	0.045621	NW	0.1	2.81353
W008	2000	1630	3.26	1	3.26	3.4	2.2982	0.66	120	2630	0.045621	NW	0.1	2.81353
W009	2000	1630	3.26	1	3.26	3.4	2.2982	0.66	120	2630	0.045621	NW	0.1	2.81353
W010	2000	1630	3.26	1	3.26	3.4	2.2982	0.66	120	2630	0.045621	NW	0.1	2.81353
W011	2000	1630	3.26	1	3.26	3.4	2.2982	0.66	120	2630	0.045621	NW	0.1	2.81353
W012	2000	1630	3.26	1	3.26	3.4	2.2982	0.66	120	2630	0.045621	NW	0.1	2.81353
W013	2000	1630	3.26	1	3.26	3.4	2.2982	0.66	120	2630	0.045621	NW	0.1	2.81353
W014	2000	1630	3.26	1	3.26	3.4	2.2982	0.66	120	2630	0.045621	NW	0.1	2.81353
W015	2000	1630	3.26	1	3.26	3.4	2.2982	0.66	120	2630	0.045621	NW	0.1	2.81353
W016	2000	1630	3.26	1	3.26	3.4	2.2982	0.66	120	2630	0.045621	NW	0.1	2.81353
W017	2000	1630	3.26	1	3.26	3.4	2.2982	0.66	120	2630	0.045621	NW	0.1	2.81353
W018	2000	1630	3.26	1	3.26	3.4	2.2982	0.66	120	2630	0.045621	NW	0.1	2.81353
W019	2000	1630	3.26	1	3.26	3.4	2.2982	0.66	120	2630	0.045621	NW	0.1	2.81353
W020	2000	1630	3.26	1	3.26	3.4	2.2982	0.66	120	2630	0.045621	NW	0.1	2.81353
W021	2000	1630	3.26	1	3.26	3.4	2.2982	0.66	120	2630	0.045621	NW	0.1	2.81353
W022	2000	1630	3.26	1	3.26	3.4	2.2982	0.66	120	2630	0.045621	NW	0.1	2.81353
W023	2000	1630	3.26	1	3.26	3.4	2.2982	0.66	120	2630	0.045621	NW	0.1	2.81353
W024	2000	1630	3.26	1	3.26	3.4	2.2982	0.66	120	2630	0.045621	NW	0.1	2.81353
W025	2000	1630	3.26	1	3.26	3.4	2.2982	0.66	120	2630	0.045621	NW	0.1	2.81353
W026	2000	1630	3.26	1	3.26	3.4	2.2982	0.66	120	2630	0.045621	NW	0.1	2.81353
W027	2000	1630	3.26	1	3.26	3.4	2.2982	0.66	120	2630	0.045621	NW	0.1	2.81353
W028	2000	1630	3.26	1	3.26	3.4	2.2982	0.66	120	2630	0.045621	NW	0.1	2.81353
W029	2000	1630	3.26	1	3.26	3.4	2.2982	0.66	120	2630	0.045621	NW	0.1	2.81353
W030	2000	1630	3.26	1	3.26	3.4	2.2982	0.66	120	2630	0.045621	NW	0.1	2.81353
W031	2000	1630	3.26	1	3.26	3.4	2.2982	0.66	120	2630	0.045621	NW	0.1	2.81353
W032	2000	1630	3.26	1	3.26	3.4	2.2982	0.66	120	2630	0.045621	NW	0.1	2.81353
W033	2000	1630	3.26	1	3.26	3.4	2.2982	0.66	120	2630	0.045621	NW	0.1	2.81353
W034	2000	1630	3.26	1	3.26	3.4	2.2982	0.66	120	2630	0.045621	NW	0.1	2.81353
W035	2000	1630	3.26	1	3.26	3.4	2.2982	0.66	120	2630	0.045621	NW	0.1	2.81353
W036	2000	1630	3.26	1	3.26	3.4	2.2982	0.66	120	2630	0.045621	NW	0.1	2.81353
W037	2000	1630	3.26	1	3.26	3.4	2.2982	0.66	120	2630	0.045621	NW	0.1	2.81353
W038	2000	1630	3.26	1	3.26	3.4	2.2982	0.66	120	2630	0.045621	NW	0.1	2.81353
W039	2000	1630	3.26	1	3.26	3.4	2.2982	0.66	120	2630	0.045621	NW	0.1	2.81353
W040	2000	1630	3.26	1	3.26	3.4	2.2982	0.66	120	2630	0.045621	NW	0.1	2.81353
W041	2000	1630	3.26	1	3.26	3.4	2.2982	0.66	120	2630	0.045621	NW	0.1	2.81353
W042	2000	1630	3.26	1	3.26	3.4	2.2982	0.66	120	2630	0.045621	NW	0.1	2.81353
W043	2000	1630	3.26	1	3.26	3.4	2.2982	0.66	120	2630	0.045621	NW	0.1	2.81353
W044	2000	1630	3.26	1	3.26	3.4	2.2982	0.66	120	2630	0.045621	NW	0.1	2.81353
W045	2000	1630	3.26	1	3.26	3.4	2.2982	0.66	120	2630	0.045621	NW	0.1	2.81353
W046	2000	1630	3.26	1	3.26	3.4	2.2982	0.66	120	2630	0.045621	NW	0.1	2.81353
W047	2000	1630	3.26	1	3.26	3.4	2.2982	0.66	120	2630	0.045621	NW	0.1	2.81353
W048	2000	1630	3.26	1	3.26	3.4	2.2982	0.66	120	2630	0.045621	NW	0.1	2.81353
W049	2000	1630	3.26	1	3.26	3.4	2.2982	0.66	120	2630	0.045621	NW	0.1	2.81353
W050	2000	1630	3.26	1	3.26	3.4	2.2982	0.66	120	2630	0.045621	NW	0.1	2.81353
W051	2000	1630	3.26	1	3.26	3.4	2.2982	0.66	120	2630	0.045621	NW	0.1	2.81353
W052	2000	1630	3.26	1	3.26	3.4	2.2982	0.66	120	2630	0.045621	NW	0.1	2.81353
W053	2000	1630	3.26	1	3.26	3.4	2.2982	0.66	120	2630	0.045621	NW	0.1	2.81353
W054	2000	1630	3.26	1	3.26	3.4	2.2982	0.66	120	2630	0.045621	NW	0.1	2.81353
W055	2000	1630	3.26	1	3.26	3.4	2.2982	0.66	120	2630	0.045621	NW	0.1	2.81353
W056	2000	1630	3.26	1	3.26	3.4	2.2982	0.66	120	2630	0.045621	NW	0.1	2.81353
W057	2000	1630	3.26	1	3.26	3.4	2.2982	0.66	120	2630	0.045621	NW	0.1	2.81353
W058	2000	1630	3.26	1	3.26	3.4	2.2982	0.66	120	2630	0.045621	NW	0.1	2.81353
W059	2000	1630	3.26	1	3.26	3.4	2.2982	0.66	120	2630	0.045621	NW	0.1	2.81353
W060	2000	1630	3.26	1	3.26	3.4	2.2982	0.66	120	2630	0.045621	NW	0.1	2.81353
W061	2000	1630	3.26	1	3.26	3.4	2.2982	0.66	120	2630	0.045621	NW	0.1	2.81353
W062	2000	1630	3.26	1	3.26	3.4	2.2982	0.66	120	2630	0.045621	NW	0.1	2.81353
W063	2000	1630	3.26	1	3.26	3.4	2.2982	0.66	120	2630	0.045621	NW	0.1	2.81353
W064	2000	1630	3.26	1	3.26	3.4	2.2982	0.66	120	2630	0.045621	NW	0.1	2.81353
W065	2000	1630	3.26	1	3.26	3.4	2.2982	0.66	120	2630	0.045621	NW	0.1	2.81353
W066	2000	1630	3.26	1	3.26	3.4	2.2982	0.66	120	2630	0.045621	NW	0.1	2.81353
W067	2000	1630	3.26	1	3.26	3.4	2.2982	0.66	120	2630	0.045621	NW	0.1	2.81353
W068	2000	1630	3.26	1	3.26	3.4	2.2982	0.66	120	2630	0.045621	NW	0.1	2.81353
W069	2000	1630	3.26	1	3.26	3.4	2.2982	0.66	120	2630	0.045621	NW	0.1	2.81353
W070	2000	1630	3.26	1	3.26	3.4	2.2982	0.66	120	2630	0.045621	NW	0.1	2.81353
W07														