

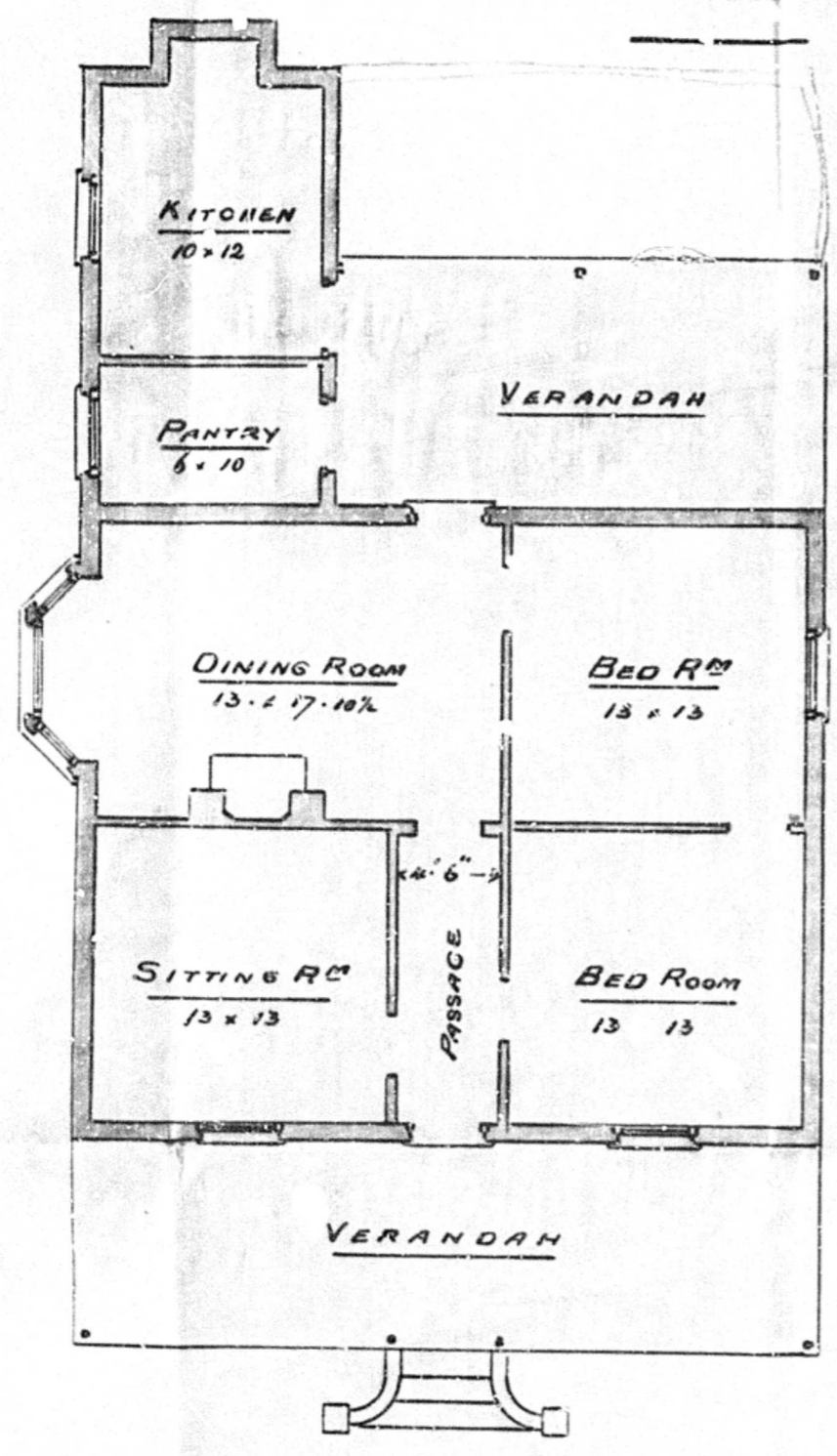
30 31 32 33 34 35 36 37 38

127. Sixth Avenue.

PROPOSED DWELLING HOUSE

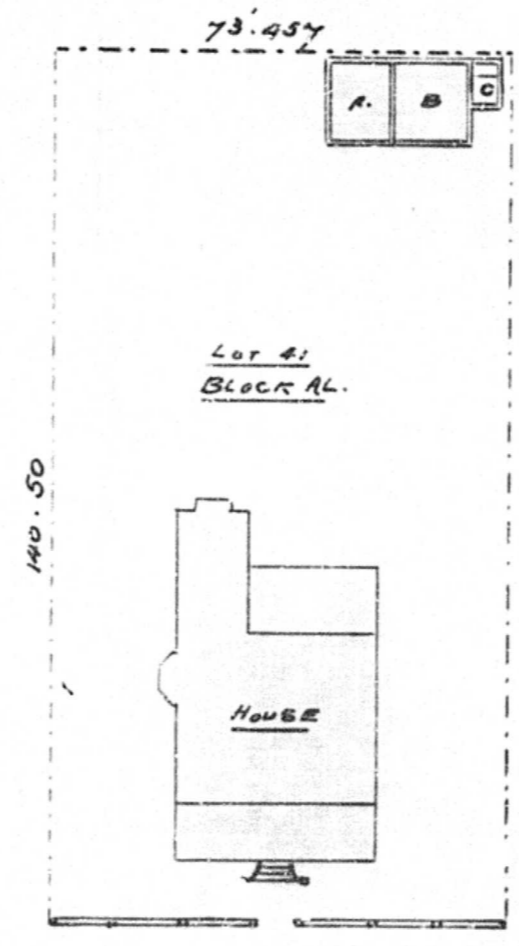
ON LOT 41, BLOCK A.L. BEREA DURBAN

FOR MR. THOMAS KING



PLAN

SCALE 1 INCH = 8 FEET



SIXTH AVENUE

BLOCK PLAN

SCALE 1 INCH = 30 FEET

NOTE A. KAFIR HOUSE 10x12
 B. STABLE 12x12
 C. CLOSET 4x6

4716
 DURBAN CORPORATION
 APPROVED
 W. J. Payne MAYOR
 J. H. M. BORDUGH ENGINEER
 W. J. M. DICK 1895

4716

4716

W. J. M. Dick
 W. J. M. DICK
 127. Sixth Avenue
 Feb 1895