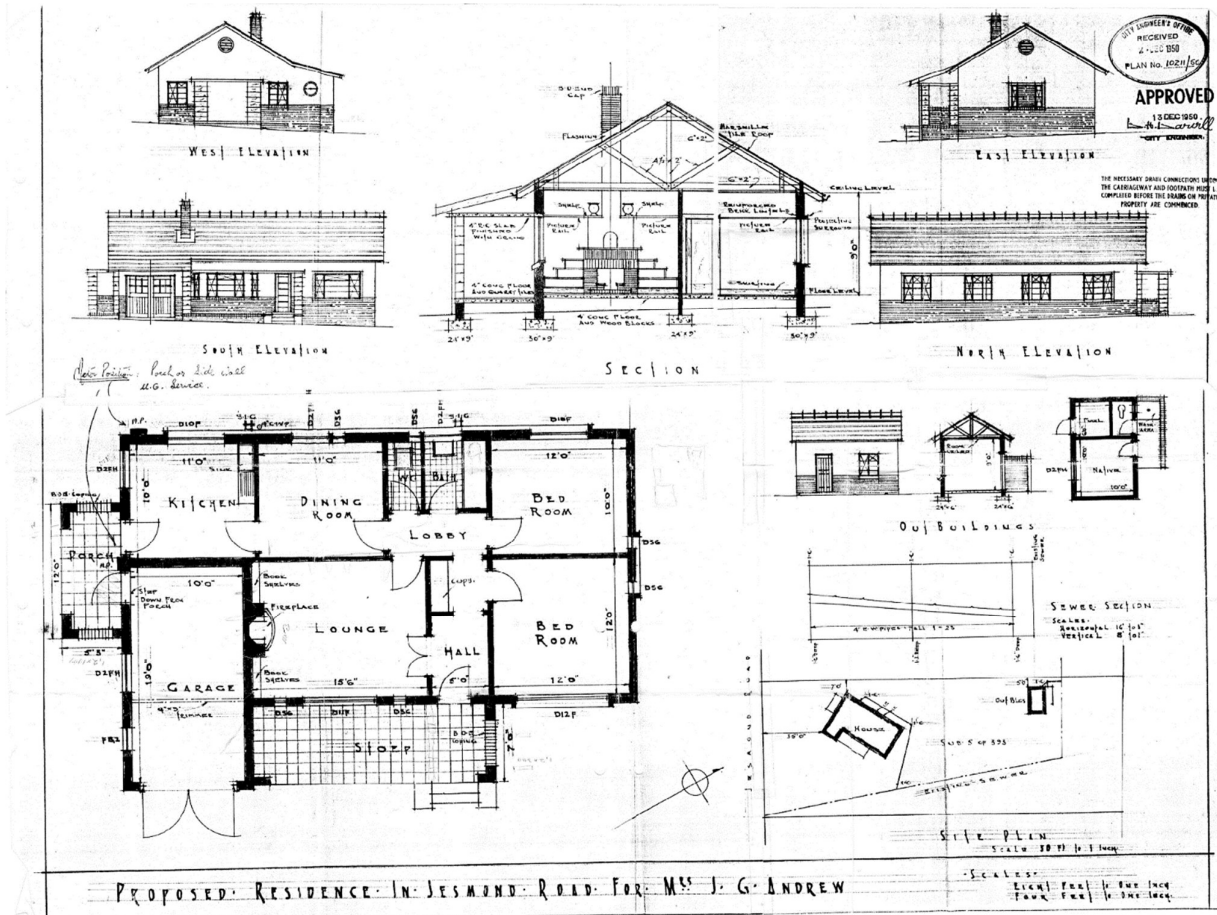


A COPY OF THE ORIGINAL APPROVED PLAN BY THE MSUNDUZI MUNICIPALITY REFERENCED 10211/50 DATED 13 December 1950. THIS PLAN AND THE FOLLOWING PLAN ARE THE ONLY TWO PLANS THAT COULD BE OBTAINED FROM THE MSUNDUZI MUNICIPALITY. WHEN YOU COMPARE THIS PLAN TO THE THIS FIRMS LATEST PLAN REFERENCED 2392/0/1-3 YOU WILL NOTICE THAT THE SINGLE GARAGE AND THE PORCH HAVE BEEN CONVERTED TO HABITABLE ROOMS.



THIS IS A COPY OF AN UNDATED PLAN THAT WAS SUBMITTED TO THE MSUNDUZI MUNICIPALITY BY MR NEIL GROENEWALT THAT WAS NEVER APPROVED AND SHOWS THE BACK PORCH AND EXTENSION TO THE BEDROOM AT THE REAR OF THE PROPERTY.

