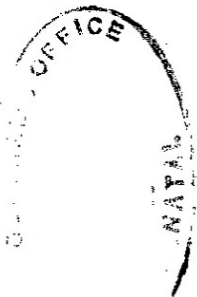
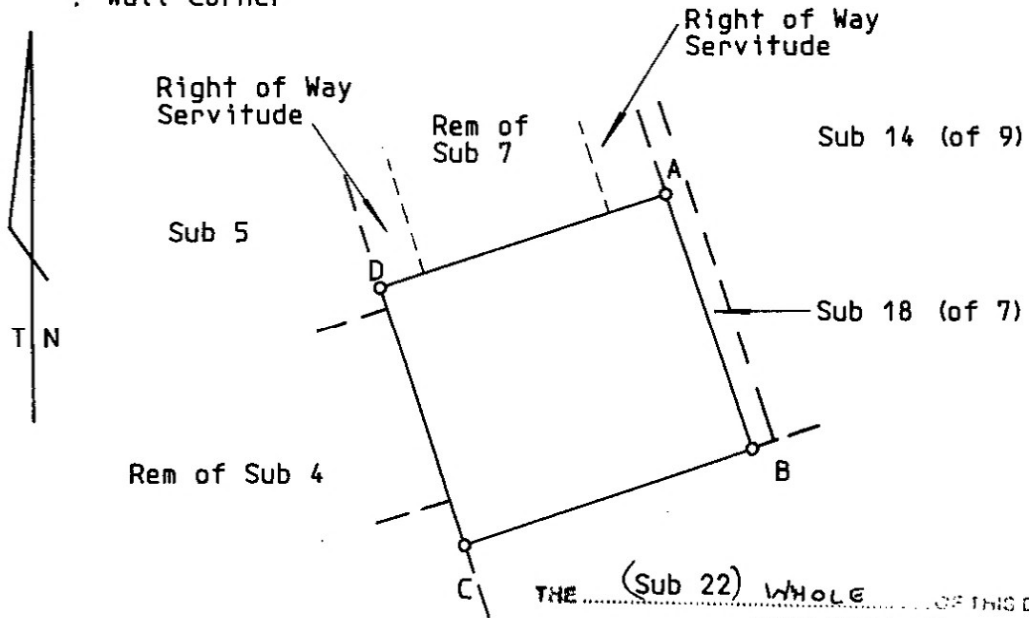


SIDES Metres		ANGLES OF DIRECTION		CO-ORDINATES Y System: LO 31° X		S. G. No.
		Constants:		0, 00	+3290 000, 00	3309/1993
AB	17, 91	341 23 30	A	- 2 284, 57	+ 9 901, 41	Approved <i>R.M. Steere</i>
BC	20, 18	71 32 20	B	- 2 290, 28	+ 9 918, 38	
CD	18, 05	161 53 30	C	- 2 271, 14	+ 9 924, 77	for SURVEYOR- GENERAL
DA	20, 02	251 56 40	D	- 2 265, 53	+ 9 907, 61	
		292-N1	⊕	- 2 433, 41	+ 9 812, 45	3.1.1994
		293-N1	⊕	- 2 221, 64	+ 9 884, 33	

DSP 3382

Description of Beacons

- A : 10mm Drill hole in wall 1m above ground
- B : 12mm Drill Hole
- C : 10mm Drill hole in concrete
- D : Wall Corner



See p 11

Sub 17 (of 4)

S.G. No. 3310/1993 DATE 94:04:21

Sub 26: C.C.T. 8561/1994

Scale 1: 500

R.M. Steere

for SURVEYOR GENERAL

The figure

A B C D

represents

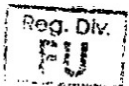
361 square metres
SUB 25 (of 7) OF LOT 130 DURBAN

of land being

situate in the
City of Durban
Administrative District and Province of Natal

Surveyed in October 1993 by me

D.T. Button
D. T. BUTTON
Professional Land Surveyor



This diagram relates to No. C.R.T. 8650/1994	The original diagram is Sub Vol 160 fol 85 Transfer Grant NO. 431/1900	File /2 Vol. II S. R. 1679/1993 Comp. S 40
Registrar of Deeds		