

**SCREENING REPORT FOR AN ENVIRONMENTAL AUTHORIZATION OR  
FOR A PART TWO AMENDMENT OF AN ENVIRONMENTAL AUTHORISATION  
AS REQUIRED BY THE 2014 EIA REGULATIONS – PROPOSED SITE  
ENVIRONMENTAL SENSITIVITY**

**EIA Reference number:** MP30/5/1/1/2/15283PR

**Project name:** Klipplaatdrift Prospecting Right Application

**Project title:** Klipplaatdrift

**Date screening report generated:** 07/03/2019 16:49:53

**Applicant:** Thikho Resources

**Compiler:** Sarah Wanless

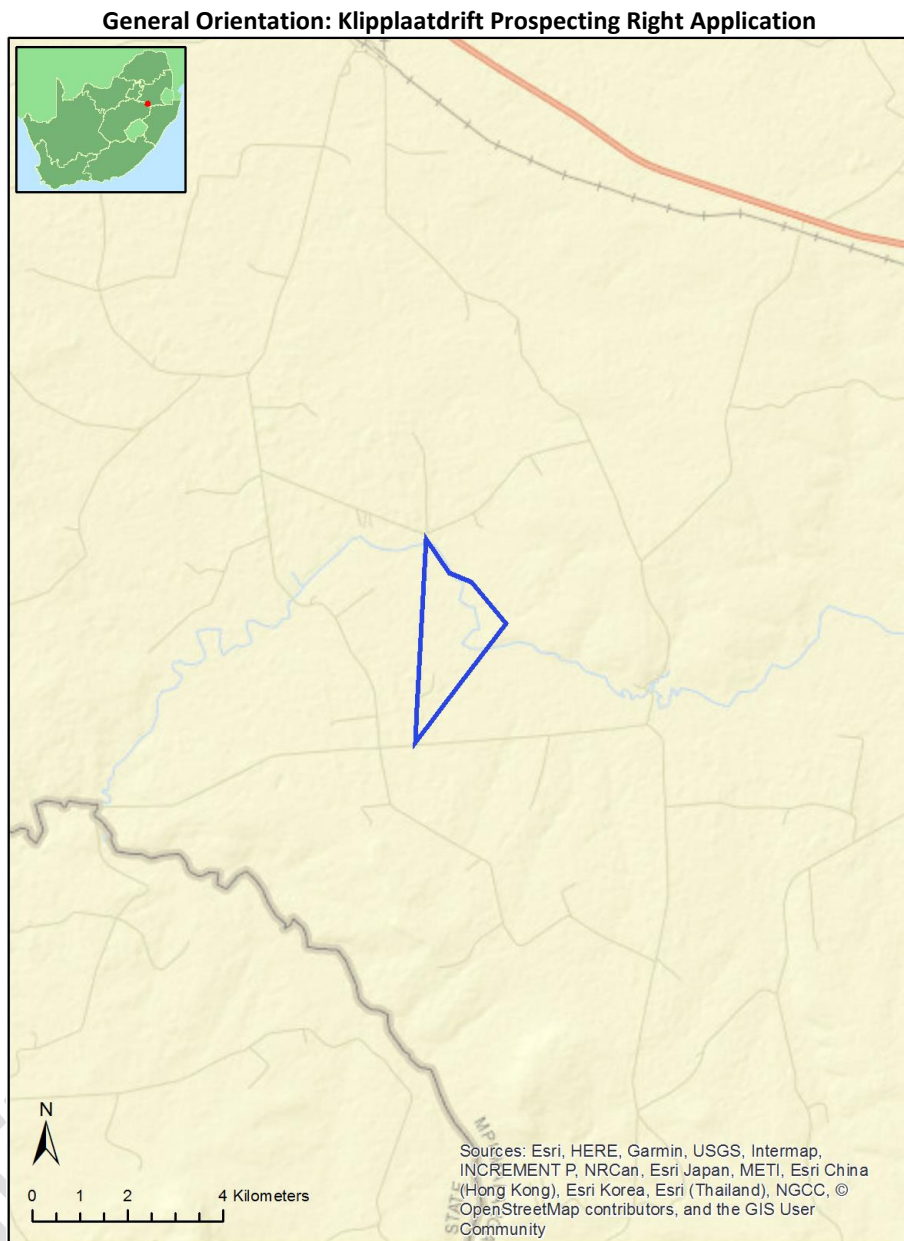
**Compiler signature:**  
.....

## Table of Contents

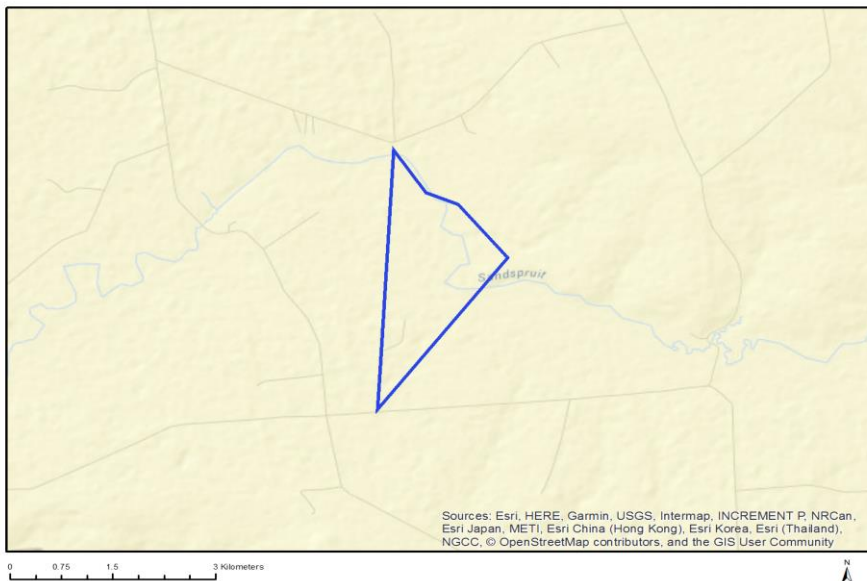
Proposed Project Location .....	3
Orientation map 1: General location .....	3
Map of proposed site and relevant area(s) .....	4
Cadastral details of the proposed site .....	4
Wind and Solar developments with an approved Environmental Authorisation or applications under consideration within 30 km of the proposed area .....	4
Environmental Management Frameworks relevant to the application .....	5
Environmental screening results and assessment outcomes .....	5
Relevant development incentives, restrictions, exclusions or prohibitions .....	5
Map indicating proposed development footprint within applicable development incentive, restriction, exclusion or prohibition zones .....	6
Proposed Development Area Environmental Sensitivity .....	6
Specialist assessments identified .....	7
Results of the environmental sensitivity of the proposed area .....	8
MAP OF RELATIVE AGRICULTURE THEME SENSITIVITY .....	9
MAP OF RELATIVE AQUATIC BIODIVERSITY THEME SENSITIVITY .....	10
MAP OF RELATIVE ARCHAEOLOGICAL AND CULTURAL HERITAGE THEME SENSITIVITY .....	11
MAP OF RELATIVE CIVIL AVIATION THEME SENSITIVITY .....	12
MAP OF RELATIVE PALEONTOLOGY THEME SENSITIVITY .....	13
MAP OF RELATIVE DEFENCE THEME SENSITIVITY .....	14
MAP OF RELATIVE TERRESTRIAL BIODIVERSITY THEME SENSITIVITY .....	15

# Proposed Project Location

## Orientation map 1: General location



## Map of proposed site and relevant area(s)



## Cadastral details of the proposed site

Property details:

No	Farm Name	Farm/Erf Number	Portion	Latitude	Longitude
1	KLIPPLAATDRIFT	43	00000	-27.1952	29.43647
2	ZWARTKOP	103	00000	-27.21705	29.50705
3	KAFFERSKRAAL	47	00000	-27.25118	29.45072
4	KLIPPLAATDRIFT	43	00020	-27.20087	29.47809
5	KLIPPLAATDRIFT	43	00021	-27.18868	29.47122
6	KLIPPLAATDRIFT	43	00026	-27.18218	29.46186
7	KAFFERSKRAAL	47	00003	-27.24202	29.46627
8	KLIPPLAATDRIFT	43	00012	-27.2128	29.45798
9	KLIPPLAATDRIFT	43	00001	-27.21474	29.46651
10	ZWARTKOP	103	00001	-27.19571	29.49627

Development footprint<sup>1</sup> details:

No development footprint(s) specified.

## Wind and Solar developments with an approved Environmental Authorisation or applications under consideration within 30 km of the proposed area

No nearby wind or solar developments found.

<sup>1</sup> "development footprint", means the area within the site on which the development will take place and includes all ancillary developments for example roads, power lines, boundary walls, paving etc. which require vegetation clearance or which will be disturbed and for which the application has been submitted.

## Environmental Management Frameworks relevant to the application

No intersections with EMF areas found.

## Environmental screening results and assessment outcomes

The following sections contain a summary of any development incentives, restrictions, exclusions or prohibitions that apply to the proposed development site as well as the most environmental sensitive features on the site based on the site sensitivity screening results for the application classification that was selected. The application classification selected for this report is: Mining|Prospecting rights|Mining - Prospecting rights.

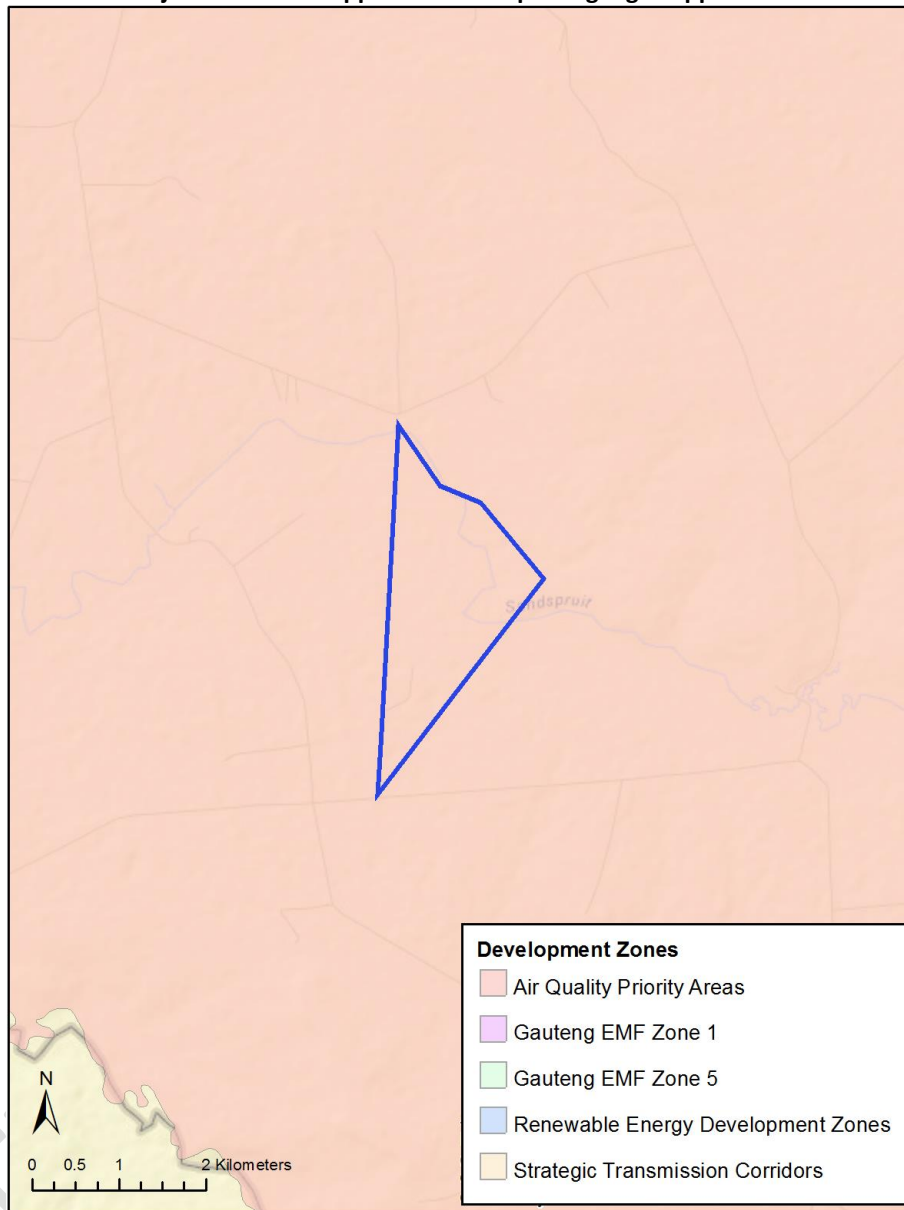
### Relevant development incentives, restrictions, exclusions or prohibitions

The following development incentives, restrictions, exclusions or prohibitions and their implications that apply to this site are indicated below.

Incentive, restriction or prohibition	Implication
Air Quality-Highveld Priority Area	<a href="https://screening.environment.gov.za/ScreeningDownloads/DevelopmentZones/HIGHVELD_PRIORITY_AREA_AQMP.pdf">https://screening.environment.gov.za/ScreeningDownloads/DevelopmentZones/HIGHVELD_PRIORITY_AREA_AQMP.pdf</a>

Map indicating proposed development footprint within applicable development incentive, restriction, exclusion or prohibition zones

**Project Location: Klipplaatdrift Prospecting Right Application**



### Proposed Development Area Environmental Sensitivity

The following summary of the development site environmental sensitivities is identified. Only the highest environmental sensitivity is indicated. The footprint environmental sensitivities for the proposed development footprint as identified, are indicative only and must be verified on site by a suitably qualified person before the specialist assessments identified below can be confirmed.

Theme	Very High sensitivity	High sensitivity	Medium sensitivity	Low sensitivity
Agriculture Theme		X		
Aquatic Biodiversity Theme	X			
Archaeological and Cultural Heritage Theme		X		

Civil Aviation Theme				X
Paleontology Theme			X	
Defence Theme				X
Terrestrial Biodiversity Theme	X			

### Specialist assessments identified

Based on the selected classification, and the environmental sensitivities of the proposed development footprint, the following list of specialist assessments have been identified for inclusion in the assessment report. It is the responsibility of the EAP to confirm this list and to motivate in the assessment report, the reason for not including any of the identified specialist study including the provision of photographic evidence of the site situation.

<b>No</b>	<b>Specialist assessment</b>	<b>Assessment Protocol</b>
1	Agricultural Impact Assessment	<a href="https://screening.environment.gov.za/ScreeningDownloads/Assessment/General/DraftAgricultureProtocol.pdf">https://screening.environment.gov.za/ScreeningDownloads/Assessment/General/DraftAgricultureProtocol.pdf</a>
2	Archaeological and Cultural Heritage Impact Assessment	<a href="https://screening.environment.gov.za/ScreeningDownloads/Assessment/General/Appendix6.pdf">https://screening.environment.gov.za/ScreeningDownloads/Assessment/General/Appendix6.pdf</a>
3	Palaeontology Impact Assessment	<a href="https://screening.environment.gov.za/ScreeningDownloads/Assessment/General/Appendix6.pdf">https://screening.environment.gov.za/ScreeningDownloads/Assessment/General/Appendix6.pdf</a>
4	Terrestrial Biodiversity Impact Assessment	<a href="https://screening.environment.gov.za/ScreeningDownloads/Assessment/General/Appendix6.pdf">https://screening.environment.gov.za/ScreeningDownloads/Assessment/General/Appendix6.pdf</a>
5	Aquatic Biodiversity Impact Assessment	<a href="https://screening.environment.gov.za/ScreeningDownloads/Assessment/General/Appendix6.pdf">https://screening.environment.gov.za/ScreeningDownloads/Assessment/General/Appendix6.pdf</a>
6	Noise Impact Assessment	<a href="https://screening.environment.gov.za/ScreeningDownloads/Assessment/General/Appendix6.pdf">https://screening.environment.gov.za/ScreeningDownloads/Assessment/General/Appendix6.pdf</a>
7	Radioactivity Impact Assessment	<a href="https://screening.environment.gov.za/ScreeningDownloads/Assessment/General/Appendix6.pdf">https://screening.environment.gov.za/ScreeningDownloads/Assessment/General/Appendix6.pdf</a>

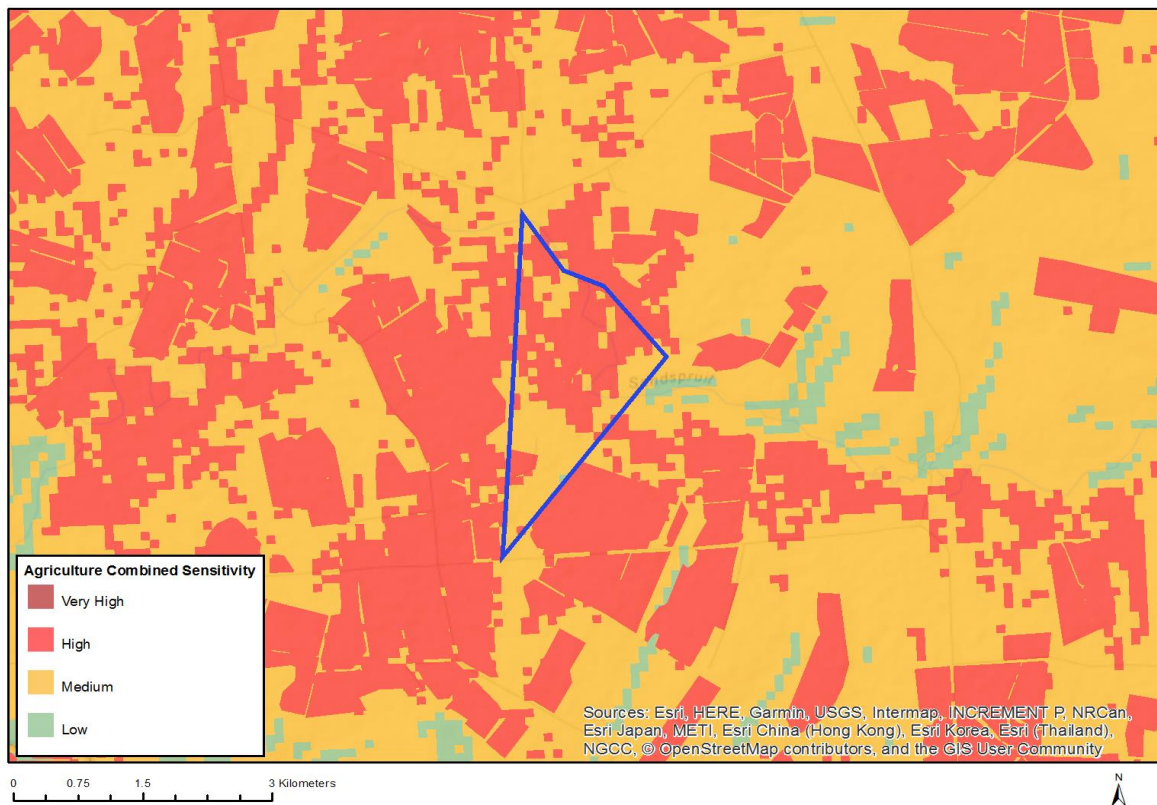
## Results of the environmental sensitivity of the proposed area.

The following section represents the results of the screening for environmental sensitivity of the proposed site for relevant environmental themes associated with the project classification. It is the duty of the EAP to ensure that the environmental themes provided by the screening tool are comprehensive and complete for the project. Refer to the disclaimer.

DEVELOPMENT PHASE



## MAP OF RELATIVE AGRICULTURE THEME SENSITIVITY

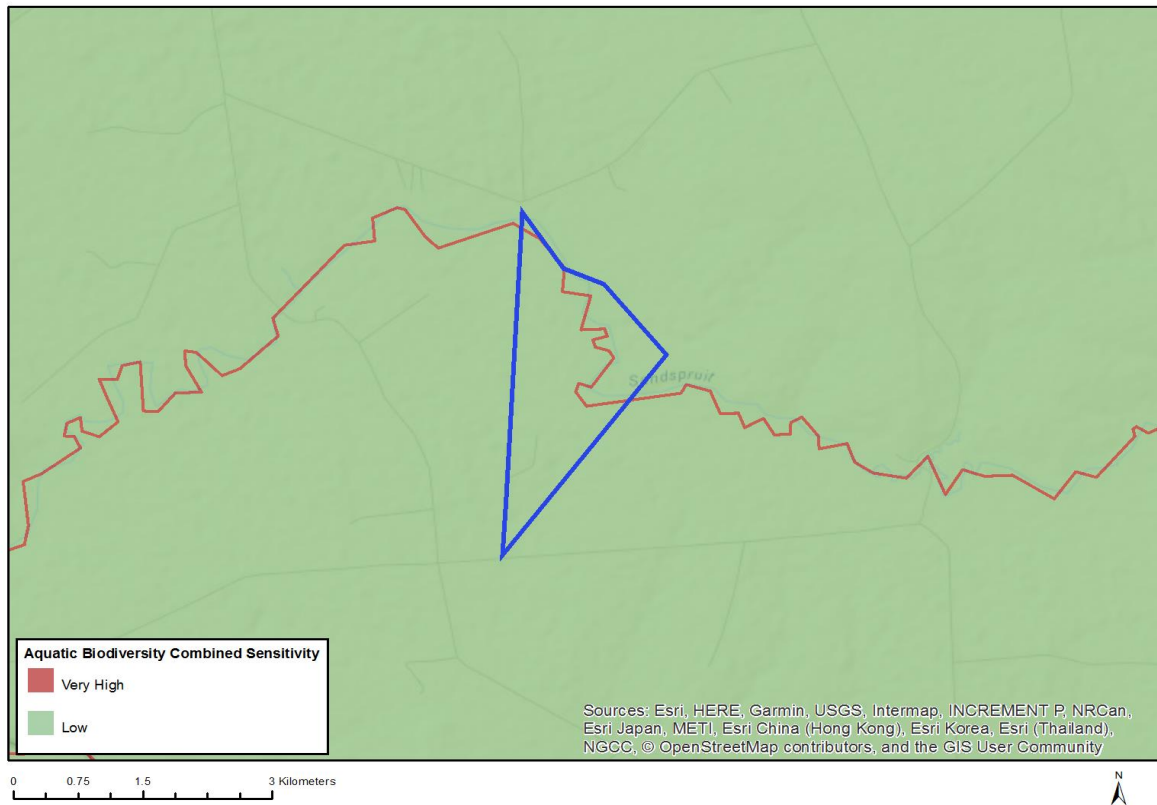


Very High sensitivity	High sensitivity	Medium sensitivity	Low sensitivity
	X		

### Sensitivity Features:

Sensitivity	Feature(s)
High	Land capability;09. Moderate-High/10. Moderate-High
High	Annual Crop Cultivation / Planted Pastures Rotation;Land capability;09. Moderate-High/10. Moderate-High
High	Annual Crop Cultivation / Planted Pastures Rotation;Land capability;06. Low-Moderate/07. Low-Moderate/08. Moderate
High	Old Fields;Land capability;06. Low-Moderate/07. Low-Moderate/08. Moderate
High	Old Fields;Land capability;09. Moderate-High/10. Moderate-High
Low	Land capability;01. Very low/02. Very low/03. Low-Very low/04. Low-Very low/05. Low
Medium	Land capability;06. Low-Moderate/07. Low-Moderate/08. Moderate

## MAP OF RELATIVE AQUATIC BIODIVERSITY THEME SENSITIVITY

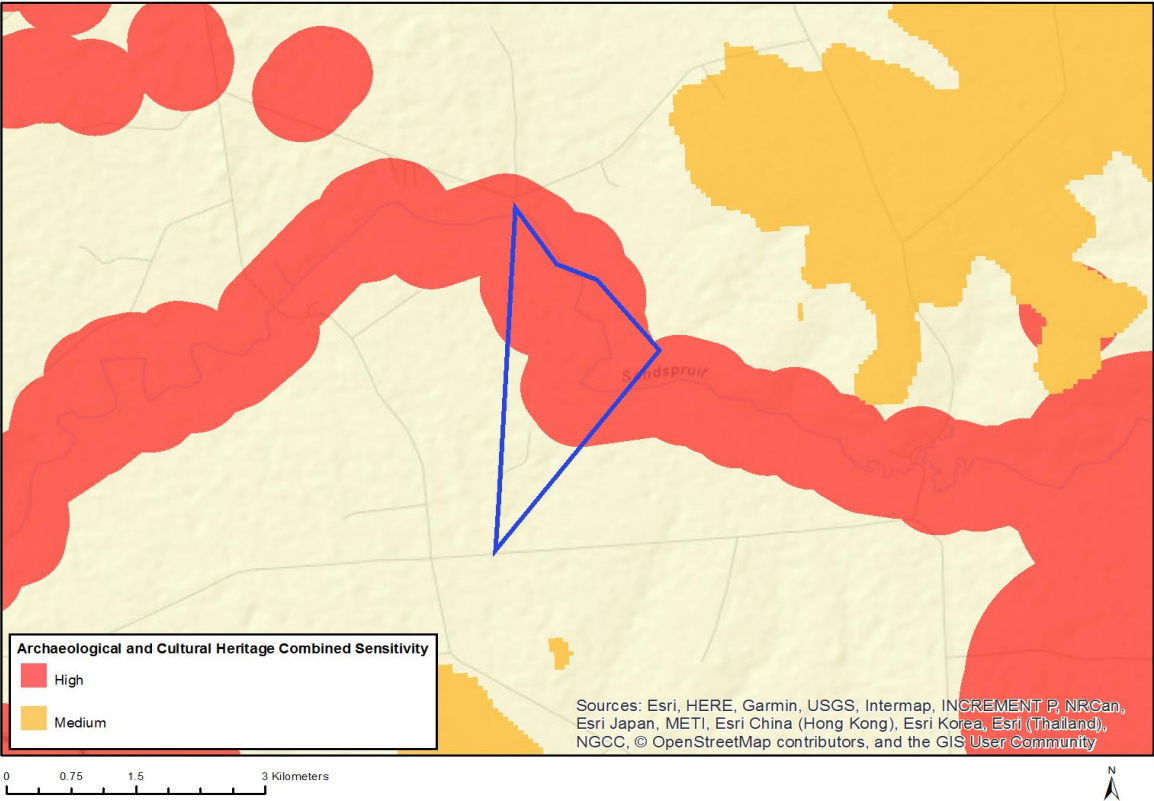


Very High sensitivity	High sensitivity	Medium sensitivity	Low sensitivity
X			

### Sensitivity Features:

Sensitivity	Feature(s)
Low	Low Sensitivity Areas
Very High	CBA,River,Sandspruit,Ecological support area

# MAP OF RELATIVE ARCHAEOLOGICAL AND CULTURAL HERITAGE THEME SENSITIVITY

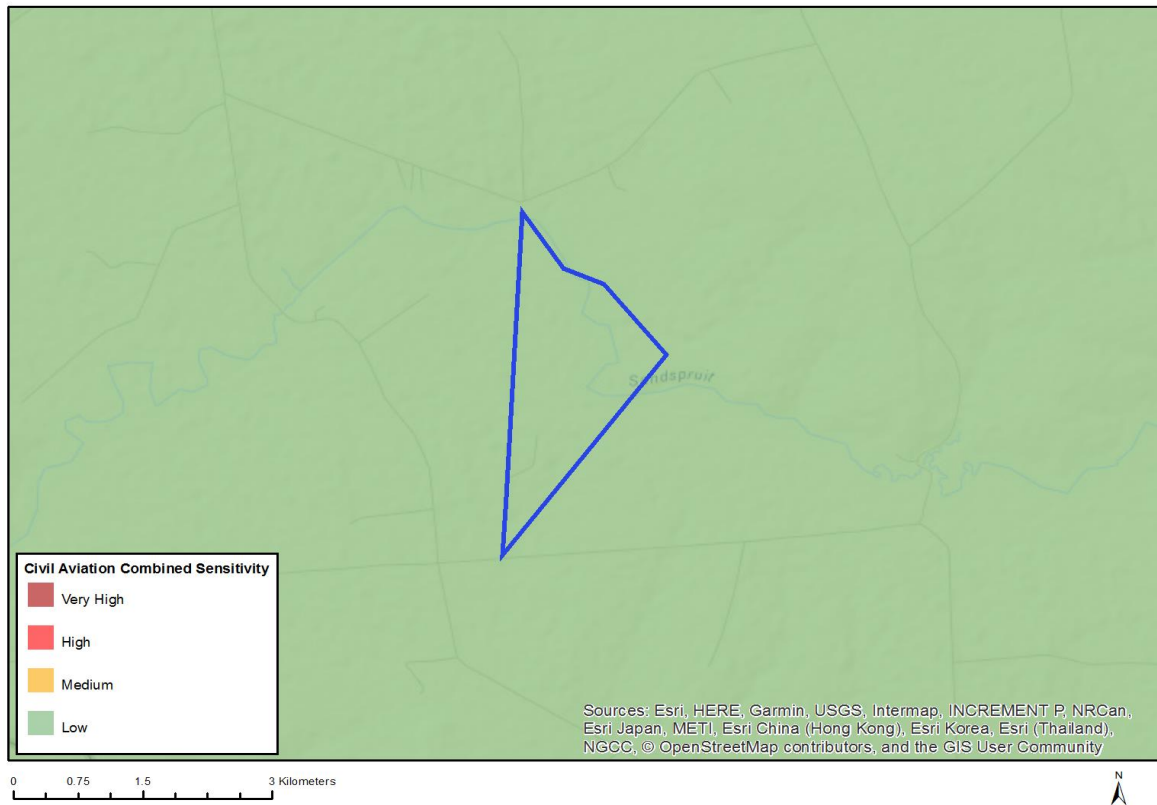


Very High sensitivity	High sensitivity	Medium sensitivity	Low sensitivity
	X		

**Sensitivity Features:**

Sensitivity	Feature(s)
High	Within 500 m of an important river
High	Within an important wetland
High	Within 500 m of an important wetland

## MAP OF RELATIVE CIVIL AVIATION THEME SENSITIVITY

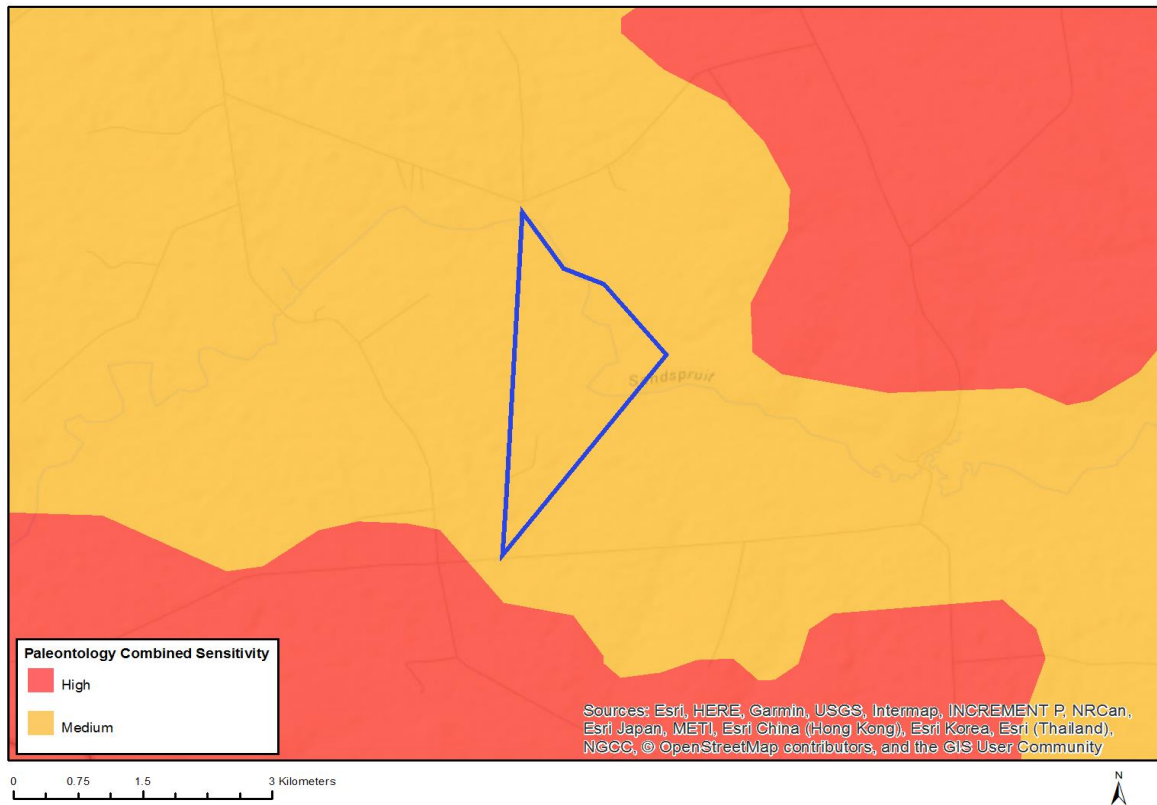


Very High sensitivity	High sensitivity	Medium sensitivity	Low sensitivity
			X

### Sensitivity Features:

Sensitivity	Feature(s)
Low	Low sensitivity

## MAP OF RELATIVE PALEONTOLOGY THEME SENSITIVITY

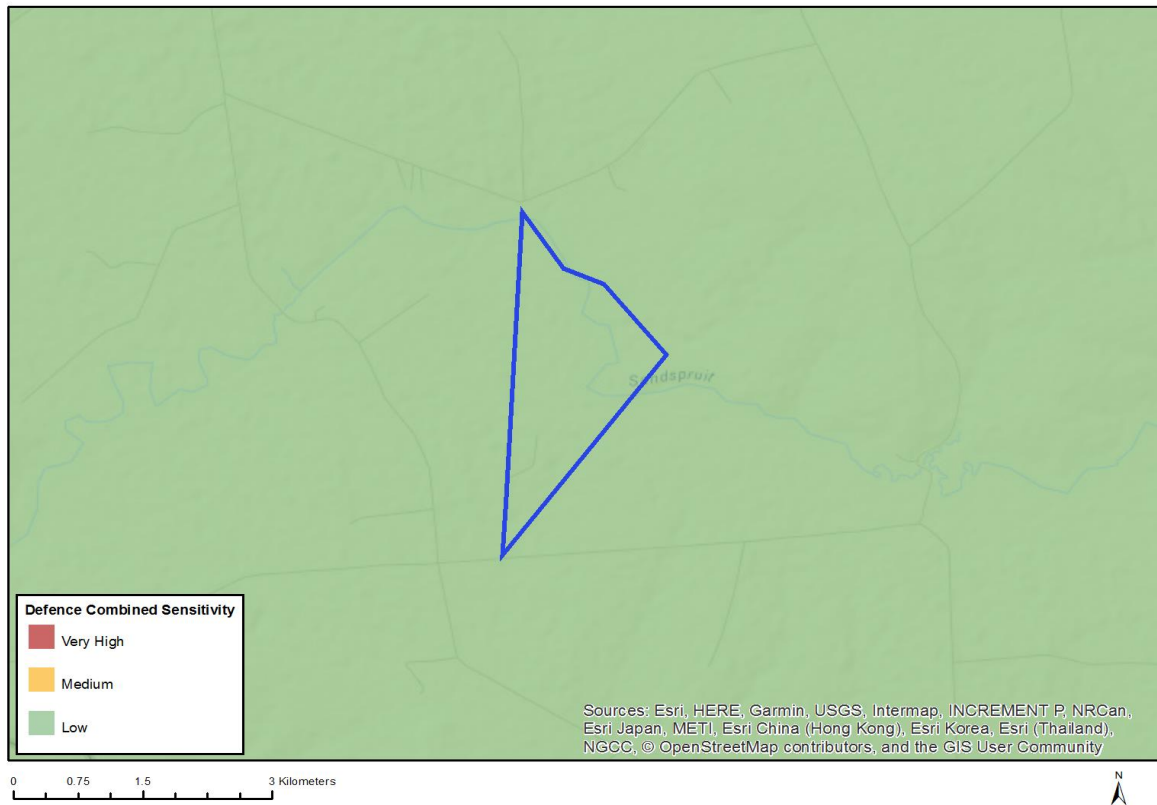


Very High sensitivity	High sensitivity	Medium sensitivity	Low sensitivity
		X	

### Sensitivity Features:

Sensitivity	Feature(s)
Medium	Rock units with a medium paleontological sensitivity

## MAP OF RELATIVE DEFENCE THEME SENSITIVITY

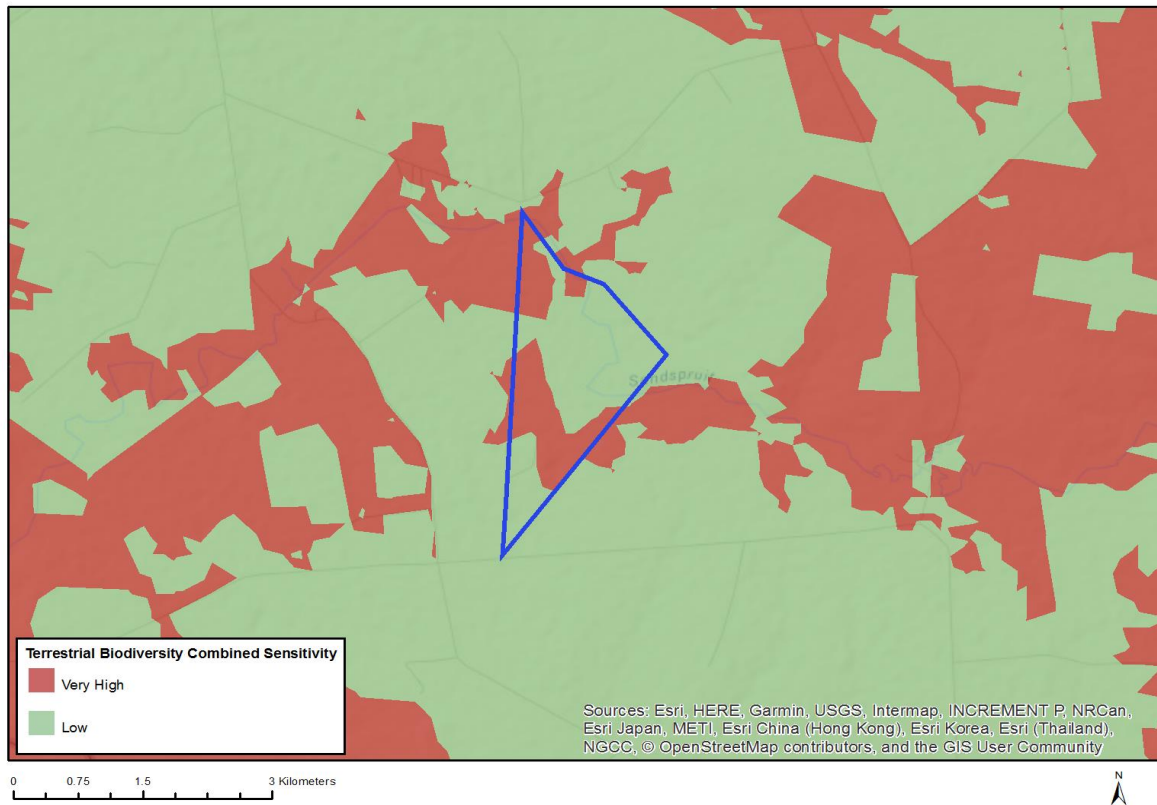


Very High sensitivity	High sensitivity	Medium sensitivity	Low sensitivity
			X

### Sensitivity Features:

Sensitivity	Feature(s)
Low	Low sensitivity

## MAP OF RELATIVE TERRESTRIAL BIODIVERSITY THEME SENSITIVITY



Very High sensitivity	High sensitivity	Medium sensitivity	Low sensitivity
X			

### Sensitivity Features:

Sensitivity	Feature(s)
Low	None
Very High	CBA, Focus area for PAES
Very High	CBA, FEPA, Focus area for PAES