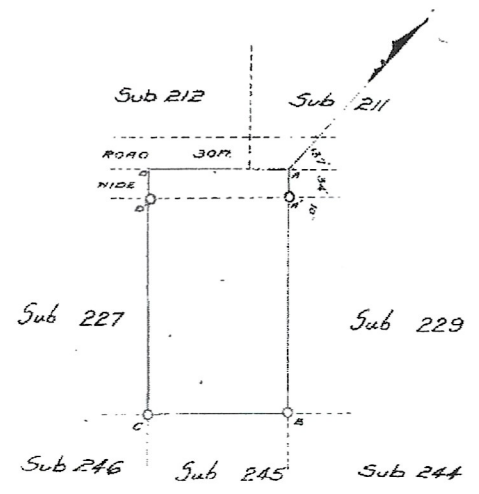


Ex. of D.  
APPROVED

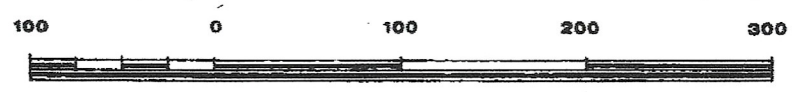
*W. H. Bluff*  
1 2 3 4 5 6 7 8 9 10



Now SUB 228 of  
LOT 665 BLUFF

SIDES.		ANGLES.	
AB	131.44	A	90°
BC	75.00	B	90°
CD	131.44	C	90°
DA	75.00	D	90°
A'B	116.44		
D'C	116.44		

Y	CO-ORDINATES	X



SCALE OF FEET.

Reg. Div.  
**FU**

228/665

The above diagram lettered A, B, C, D, *CH.*  
represents 0 Acres 0 Roods 36 <sup>21</sup> 582/100 Perches of land known as  
Subdivision 228 Shortlands of Lot 29, No. 2854, 2 *CH.*  
situated in the <sup>City</sup> ~~County~~ of Durban, Province of Natal  
Bounded as indicated above.

Surveyed by me,  
*Clarence H. Scott.*