

**SYLVANIA PLATINUM:  
MINING RIGHT APPLICATION FOR THE PROPOSED  
EVEREST NORTH PLATINUM MINE**



**DIGBY WELLS**  
ENVIRONMENTAL

**Public Information Sharing Meeting –Draft  
Environmental Scoping Report**

**Date:11 February 2012**

**Venue: Boschmanfontein Primary School**

**Time: 10h00**

[www.digbywells.com](http://www.digbywells.com)

# Meeting Agenda

- Welcome and Introductions
- Meeting Objectives and Administrative Issues
- Project Background and Description
- Environmental Impact Assessment
- Environmental Permitting Time frames
- Public Participation Process
- Open Discussion
- Closure

# Meeting Approach

- Meeting to be conducted in English and Sepedi
- All are welcome to ask questions in their language of your choice.
- Signing of the attendance register.
- Kindly switch off cell phones.
- Hold questions for the end of the presentation.
- Minutes of the meeting will be circulated for comment following this meeting .

# Meeting Objectives

- Provide company and project information
- Allow opportunity for comment and gather issues and concerns
- Open communication channels
- Use issues to guide specialist studies
- Form constructive partnerships with relevant parties

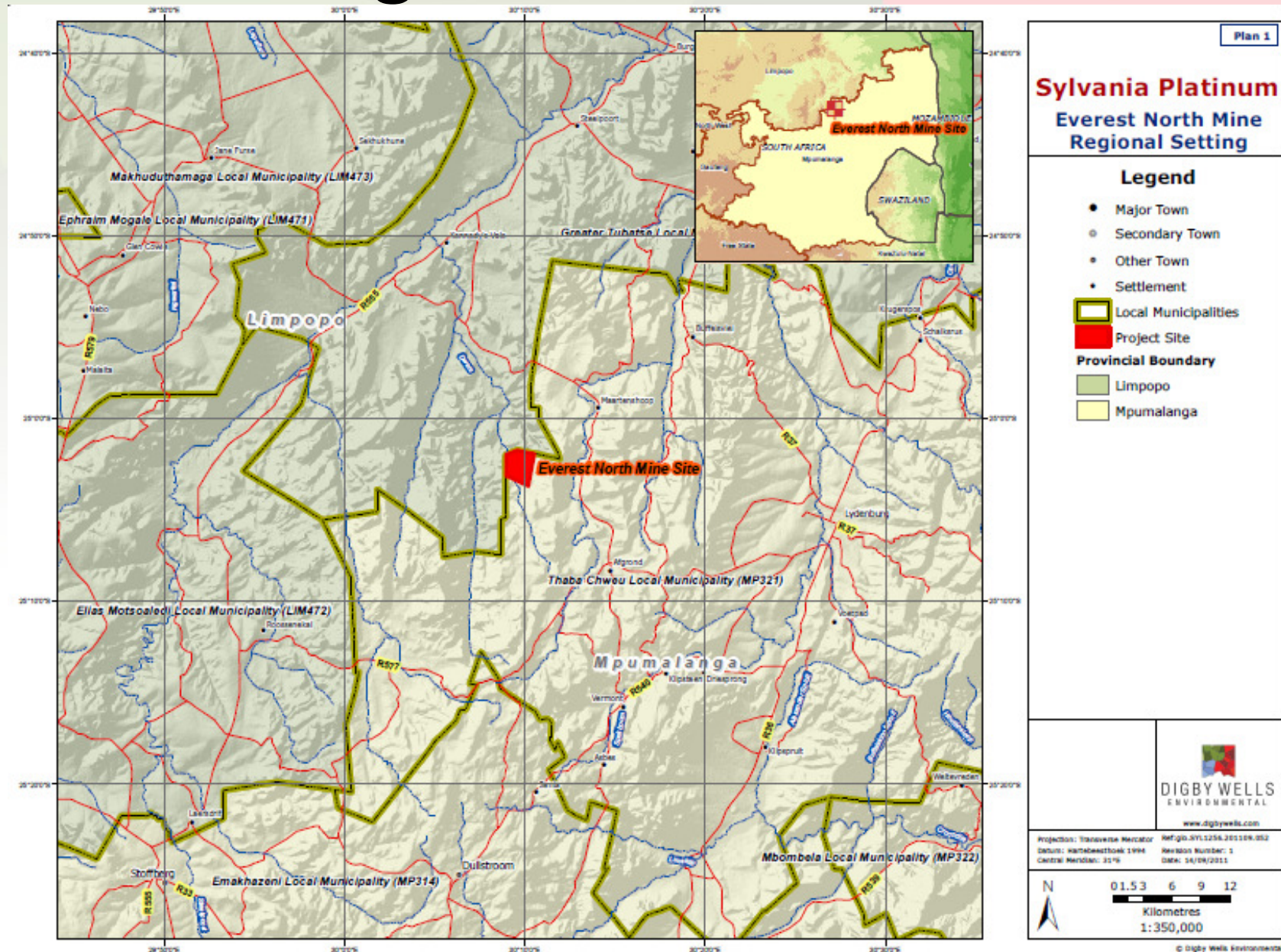
# Role of Digby Wells

- Digby Wells Environmental (Digby Wells) is an independent environmental consultancy with experience in undertaking Environmental Impact Assessments (EIA) and Public Participation Processes (PPP)
- Digby Wells has been commissioned to undertake the EIA/EMP and PPP processes for the proposed Everest North Platinum Mine project in support of a Mining Right Application, NEMA Authorisation, IWULA and Integrated waste license
- Digby Wells aims to facilitate the consultation process between the affected and interested parties and Sylvania Platinum and to independently record issues and concerns raised regarding the project
- Digby Wells has no private interest in Sylvania Platinum and operates independently to reflect both the interests of the public and the applicant

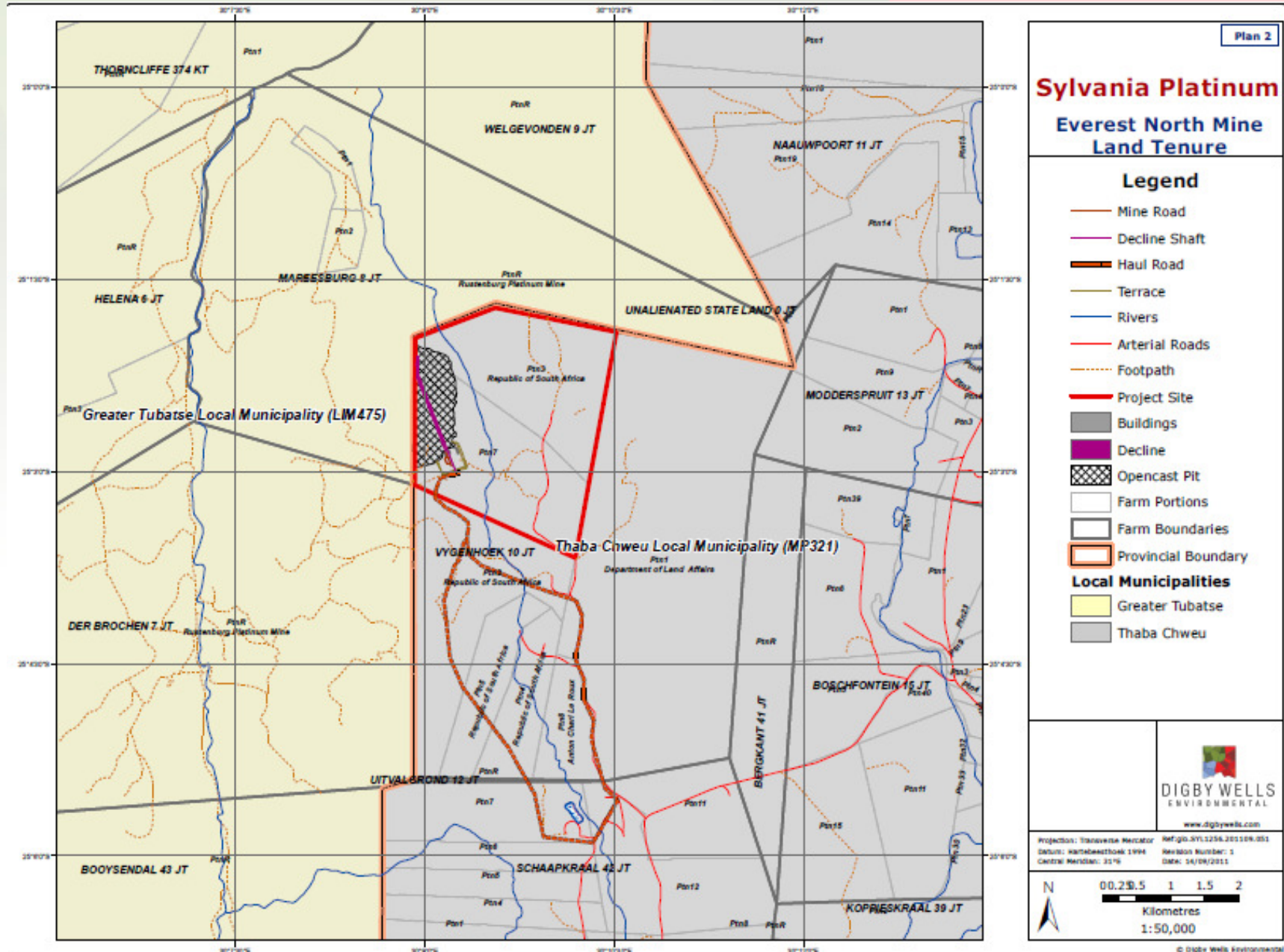
# Project Background

- Sylvania Platinum (Sylvania) are planning to develop the proposed Everest North Platinum mine, in a joint venture with Aquarius Platinum
- Opencast and underground mining of UG2 reef on the farm Vygenhoek 10 JT
- All processing will take place at the existing Everest South processing plant
- Total resource is estimated at 5.27 tonnes
- 27,000 tpm, estimating Life of Mine (LoM) at 8 years

# Regional Location



# Land tenure





# Project Description

## Open cast mining:

- Strip mining method
- Ongoing backfilling and rehabilitation
- Start on the south and advance to the north
- Depth of open pit: 70 meters

## Underground mining:

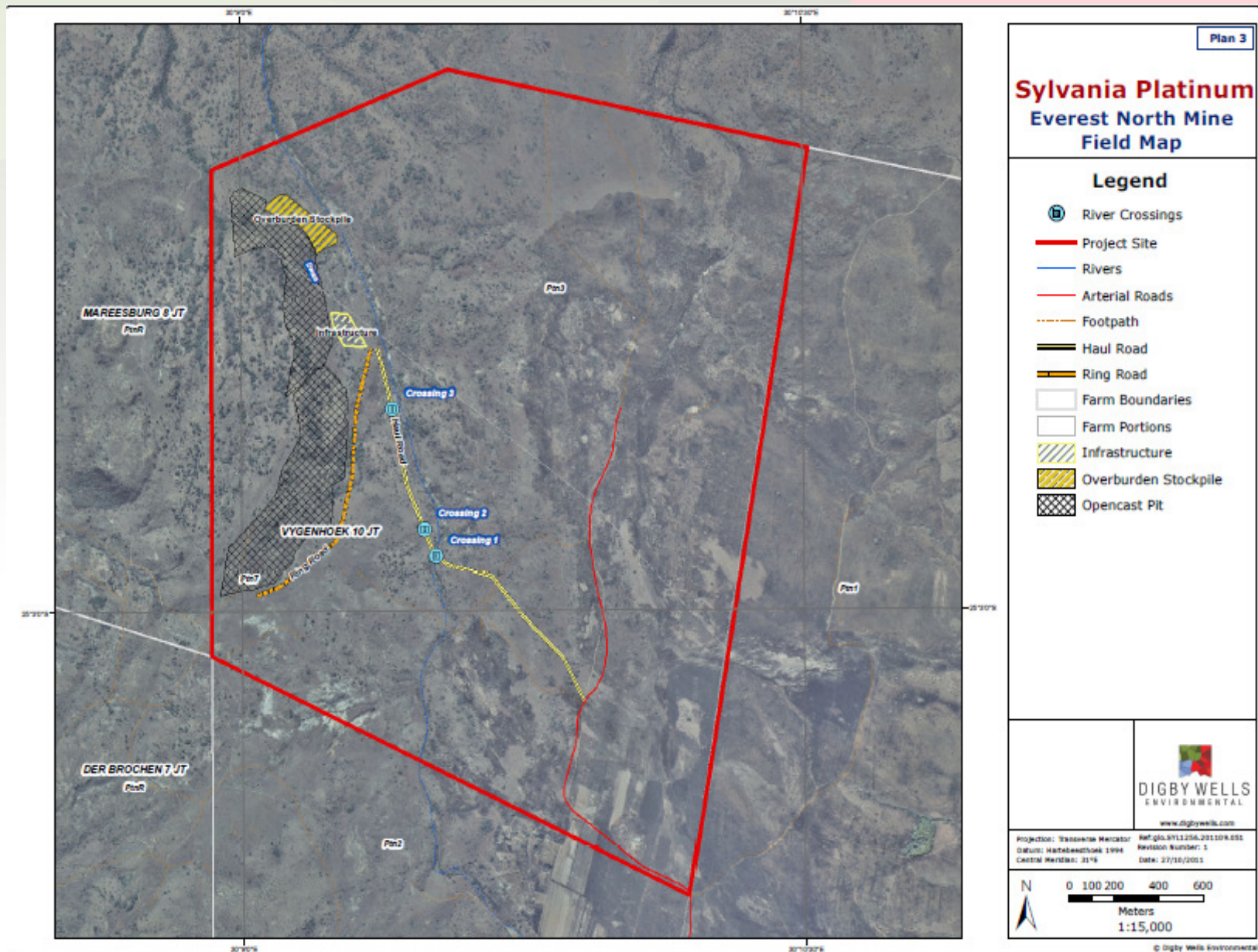
- 2 decline shafts
- Waste rock to be used to backfill the open pit and rehabilitation

# Project Description *cont.*

## Associated project infrastructure:

- Hazardous waste storage and handling
- Sewage treatment plant
- Water supply dams, return water dam, PCD and river crossing
- Power line and access road
- Security and access control
- Storage yard
- Workshops and washing bays
- Contractor camp
- Medical station

# Field Map



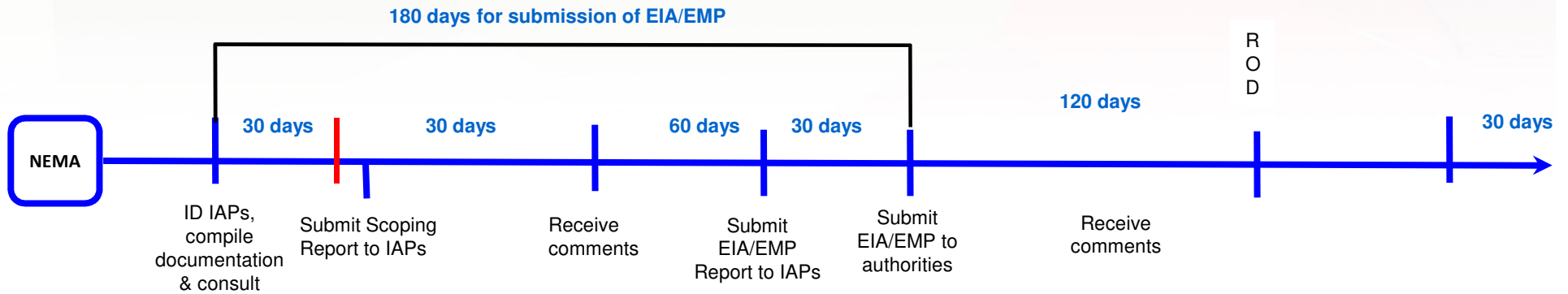
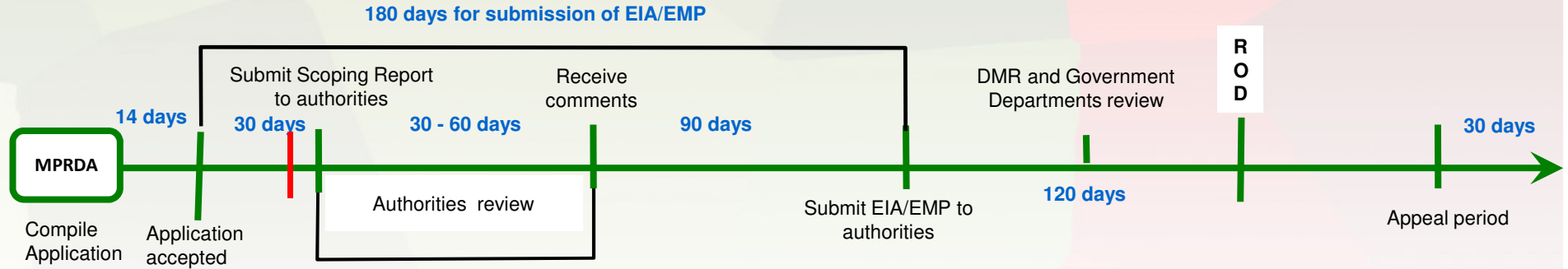
# Legislative Requirements

- Mineral and Petroleum Resource Development Act, Act No.28 of 2002 (MPRDA);
- National Environmental Management Act, Act No. 107 of 1998 (NEMA);
- National Water Act, Act No. 36 of 1998 (NWA);
- National Environmental Management Waste Act, Act No. 59 of 2008 (NEMWA);
- Provincial and relevant by-laws

# Regulatory Reports

- A draft Environmental Impact Scoping report was compiled in accordance with NEMA regulations and included:
  - A project description;
  - Existing baseline information;
  - PPP information;
  - Impact identification;
  - Terms of reference for specialist assessments;
  - Consideration of alternatives; and
- The draft report was submitted to the MDEDET on 14 December 2011 and was also made available to the public for comment from 7 December 2011 until 3 February 2102.
- A MPRDA compliant scoping report to be compiled upon acceptance of the MRA.

# Environmental Permitting Timeline



# Potential Project Impacts

## Positive

- Employment
- Regional spending of employees
- Small business opportunities
- Regional and national economy
- Skills development

## Negative

- Surface and groundwater contamination
- Air quality - dust
- Noise
- Traffic
- Topography
- Soils & land capability
- Biodiversity
- Change in visual character

# Specialist Studies

Specialist studies are to be undertaken:

- Traffic Assessment
- Fauna and Flora
- Groundwater and Surface water
- Aquatic ecology and wetlands
- Air Quality Assessment
- Noise Assessment
- Visual Assessment
- Heritage / Archaeology Assessment





# Public Participation Process

- Public Participation (PP) is a process of communication and disclosure to those interested in, or affected by the proposed Everest North Mine
- PPP provides an opportunity to raise issues, comments and concerns in respect of the proposed mining operation and environmental authorisation process.
- Issues identified will be used to inform and guide the environmental studies

# Public Participation Process

The objectives of the public participation process are, to

- Identify stakeholders that may be interested and potentially affected by the proposed project;
- Provide information relevant to the proposed project for stakeholders comment; and
- Record and address stakeholder comments.

# Public Participation to date

- One-on-one consultations – **1 - 4 November 2011** for MRA application
- BID distribution to directly affected and surrounding landowners, commenting authorities and local municipality
- Site notices(x6 English and Sepedi ) – **1 November 2011**
- Newspaper advertisements – Sowetan and Steelburg news (English and Sepedi) – **3 November 2011**
- Draft Environmental Scoping report was made available for public review – **7 December 2011 – 3 February 2012** (MPRDA),
  - Lydenburg Local Municipality Library;
  - Digby Wells website - [www.digbywells.com](http://www.digbywells.com); and
  - Hard copy was posted to Pakaneng Choma Committee (Sam Mako)

# Issues raised by I&APs to date

## Negative Impacts

- Increase in dust pollution;
- Potential impact on graves and possible resettlement;  
and
- Potential impact on surface and ground water

## Positive impacts

- Possibility of new employment and training opportunities for the local people; and
- Possibility of community infrastructure upgrades due to the mine.

# Way Forward

- Distribute minutes of Public Meeting to I&APs for comment.
- Incorporate comments of I&APs into a draft EIA/EMP.;
- Draft EIA/EMP will be made available for public review;
- Feedback meeting once the EIA/EMP is finalised; and
- EIA/EMP submission to the Mpumalanga Department of Mineral Resources.

# Questions and Discussions



DIGBY WELLS  
ENVIRONMENTAL

## Contact Details

Kabelo Mphake

Tel: + 27 11 789 9495

Fax: + 27 11 789 9498/086 515 5319

[kabelo@digbywells.com](mailto:kabelo@digbywells.com)

Thank you participation