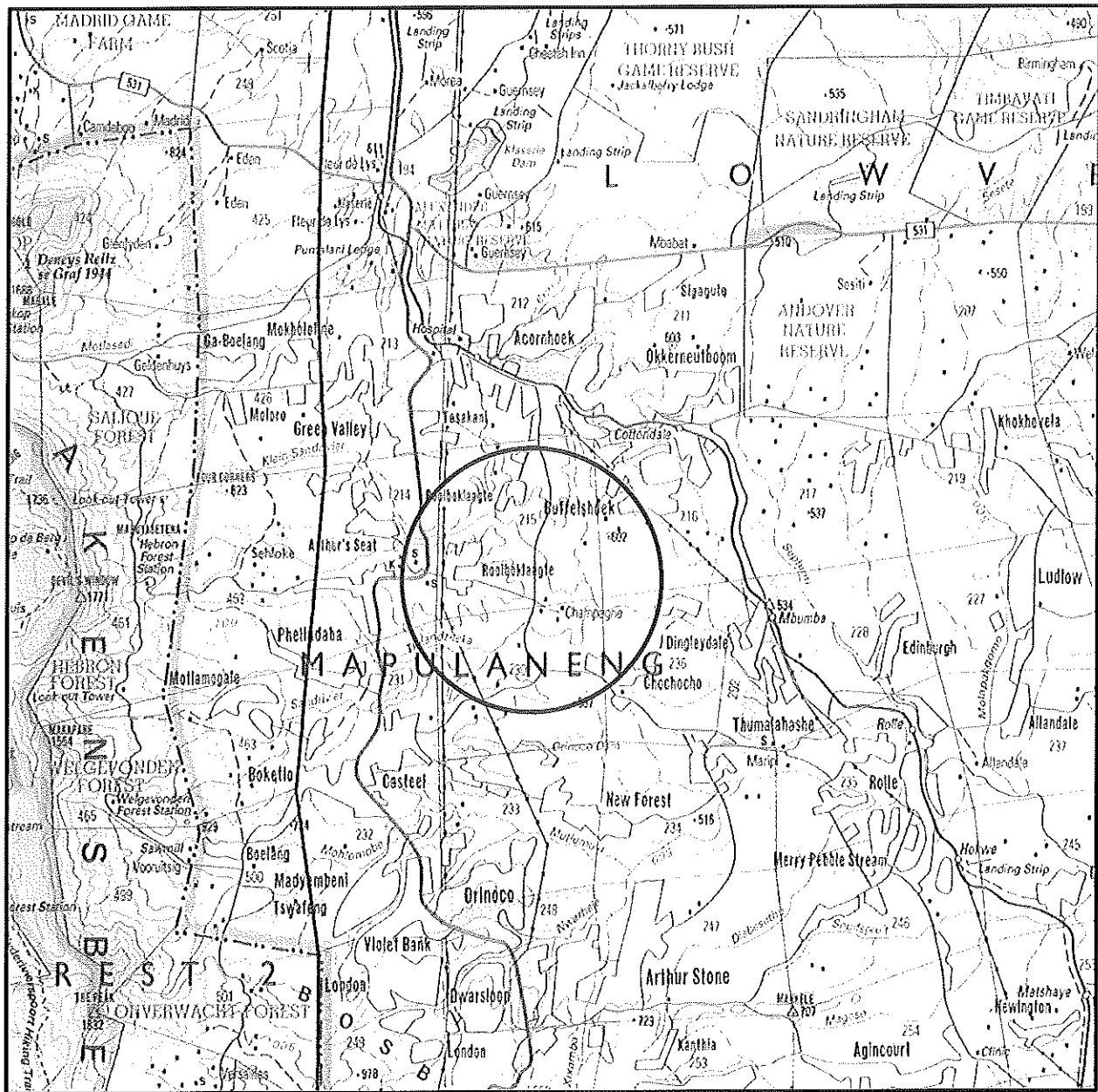


# LOCALITY PLAN



Disclaimer  
Geographic Mapping Network  
are not responsible for any errors  
in external datasets displayed on this map.

SCALE 1:250 000

Information from official maps reproduced under Government printers copyright authority No. 4138 of 28/03/1969

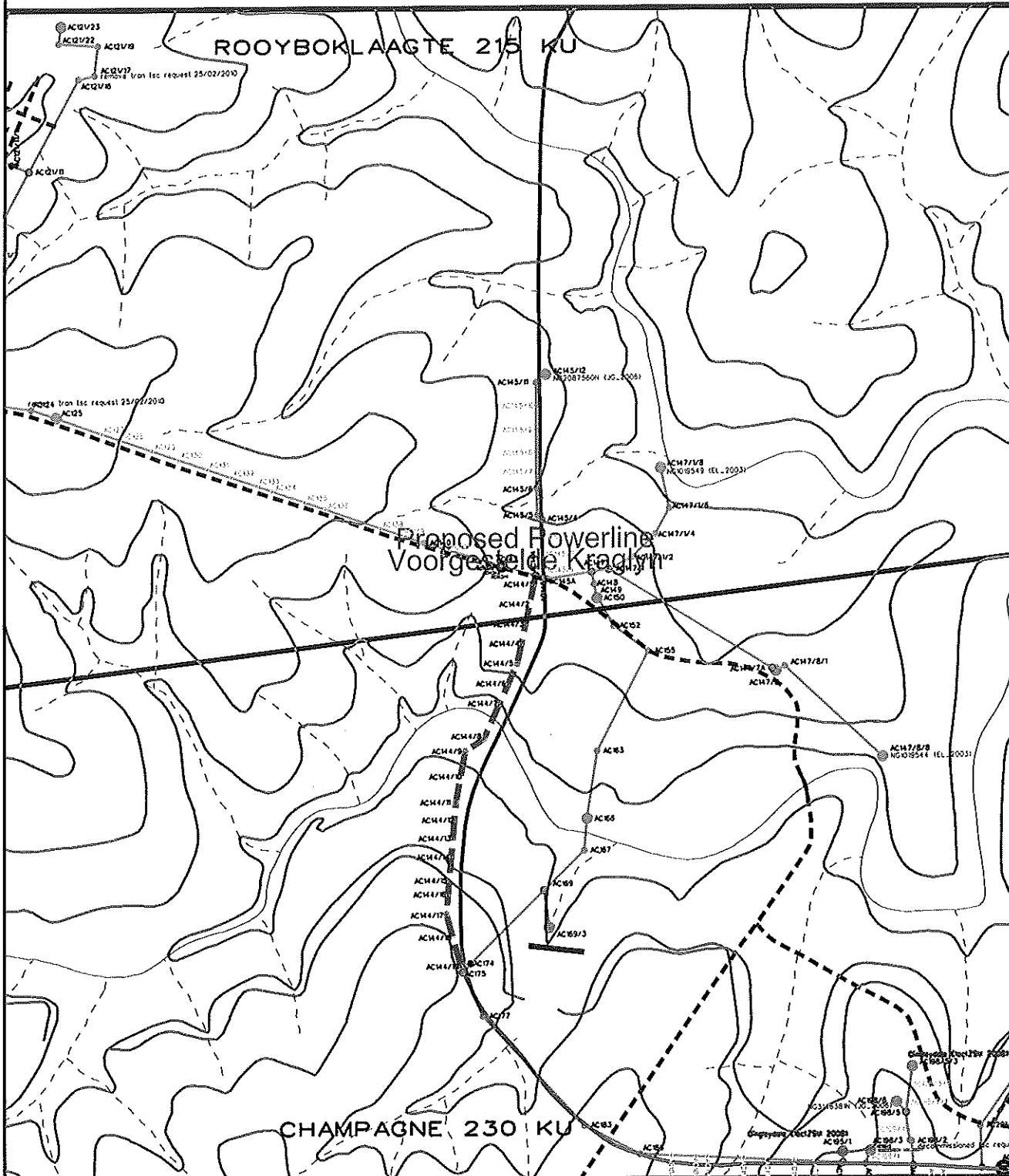


Mpumalanga Operating Unit  
Land Development

P.O.Box 1567  
Neispruit 1200  
Tel 013 -755 9617  
Fax 013 -755 9660

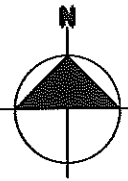
Feeder:	CHAMPAGNE 22KV	Surveyor:	S.SONO
Customer:	ESKOM	Geographic mapping:	ISHMAEL
Project No:	AC145	Date compiled:	27/08/2014
Length of line:	1.802km	Revised by:	
Portion of map no:	2431	Revision date:	
Page:	1 of 4		

DASHED RED LINE INDICATES POWERLINE ROUTE



Route plan  
Mpumalanga Operating Unit

Disclaimer  
Geographic Mapping Nelspruit  
are not responsible for any errors  
in external datasets displayed on this map.  
The following external datasets were used:  
Cadastral  
Topographical



Feeder:	CHAMPAGNE 22kV
Customer:	ESKOM
Project No:	AC145
CNC Area:	GREENVALLEY

Portion of map no:	2431 CA S
Scale:	1:25 000

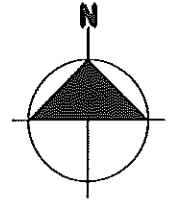
Information from official maps reproduced under Government printers copyright authority No. 4138 of 28/03/1969

(Medium Order Accuracy ±10m)

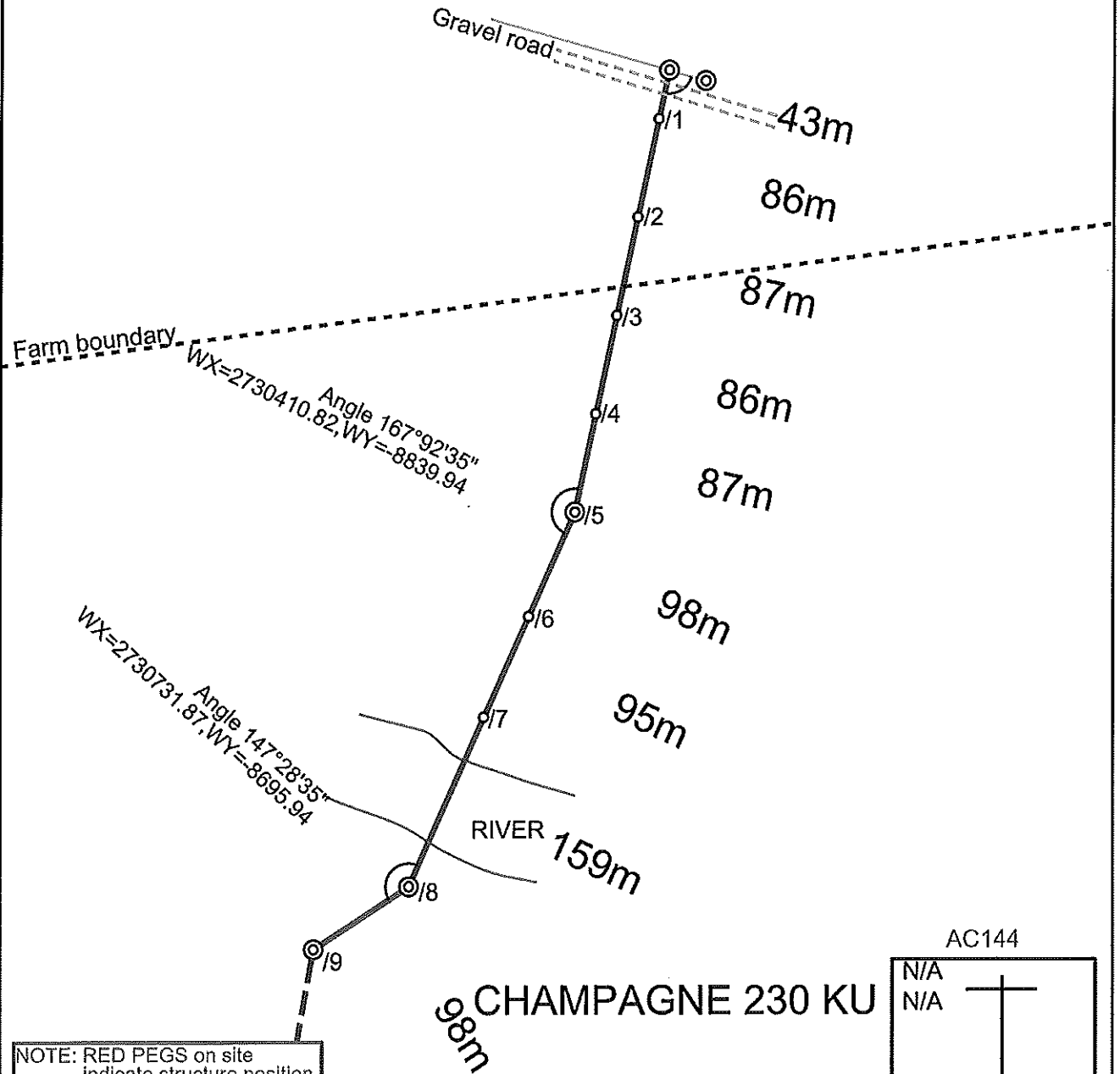
COORDINATE SYSTEM:LO84/31



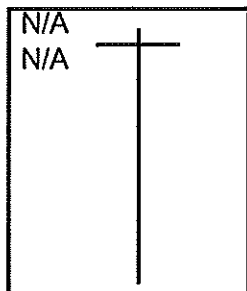
Pole no:AC144  
Tee off angle 86°98'88"  
CHAMPAGNE 22kV  
WX=2730032.72,WY=-8920.65  
LAT: -24° 40' 29.22", LONG: 31° 05' 17.29"



# ROOYBOKLAAGTE 215-KU



AC144



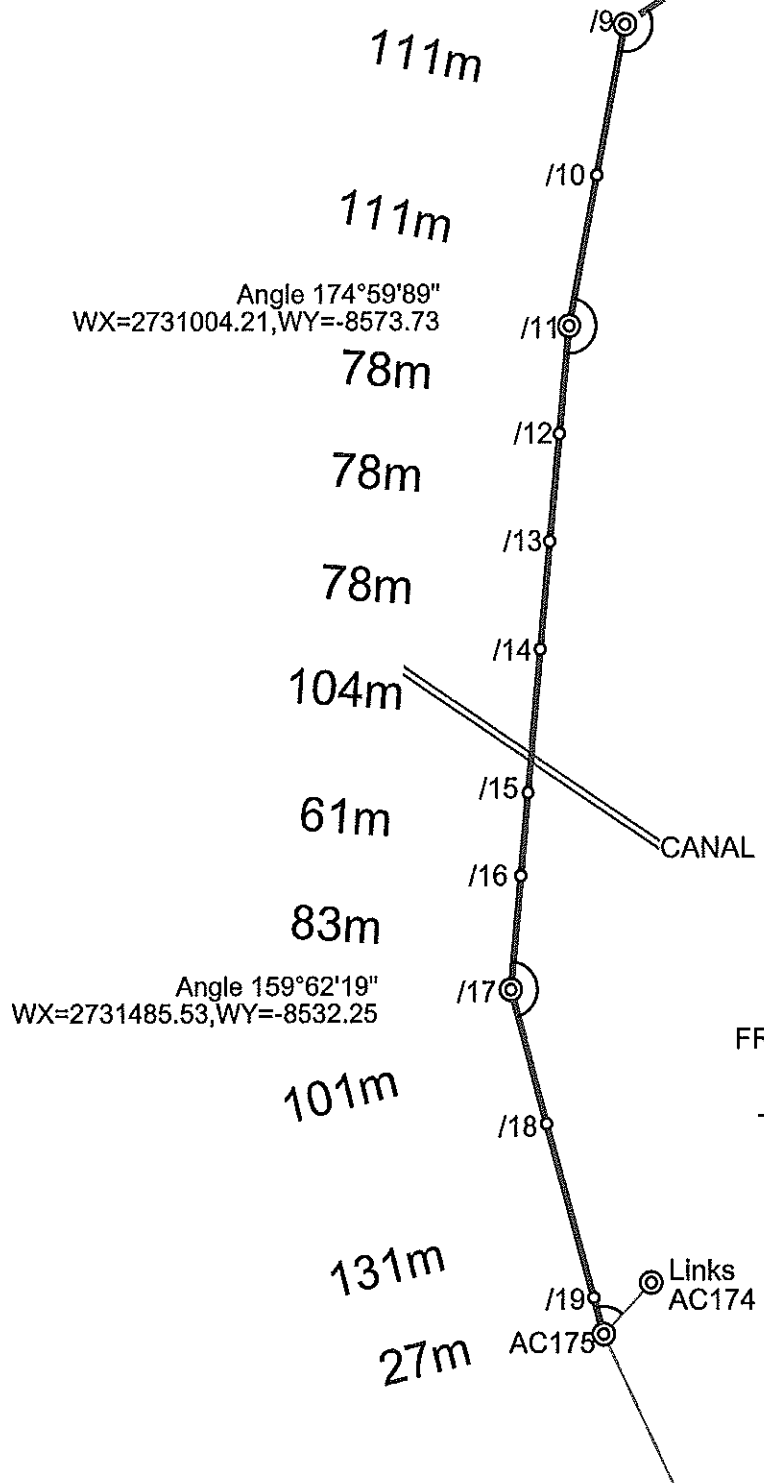
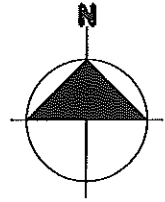
NOTE: RED PEGS on site indicate structure position.

PLEASE NOTE:  
No protected trees/plants may be cut/trimmed/removed unless the applicable tree permit is issued and handed to the construction contractor.

## CHAMPAGNE 230 KU

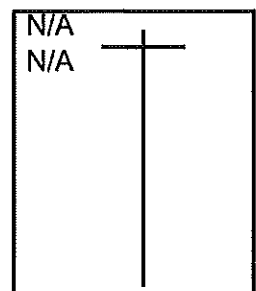
(Medium Order Accuracy ±10m)

COORDINATE SYSTEM:LO84/31  
Angle 133°48'00"  
WX=2730785.61,WY=-8613.62



LINE DEVIATION  
FROM POLE AC144 TO AC175  
Project no:AC145  
ESKOM  
Total Length of line:1.802km  
Surveyor:SOLOMON

AC144



### CHAMPAGNE 230 KU

NOTE: RED PEGS on site indicate structure position.

PLEASE NOTE:  
No protected trees/plants may be cut/trimmed/removed unless the applicable tree permit is issued and handed to the construction contractor.