

**Environmental  
Resources  
Management**  
Cape Town Office  
Block A  
Silverwood House  
Steenberg Office Park,  
Silverwood Close  
Steenberg, 7945 Cape Town  
South Africa  
Tel: +27 (0) 21 702 9100  
Fax: +27 (0) 21 701 7900  
www.erm.com

25 May 2011

DEA Reference: 12/12/20/2264  
ERM Reference: 0126393 (BAR)

Dear Stakeholder,

**Notice of Environmental Impact Assessment: Basic Assessment for  
Proposed Establishment of a 10 MW Solar Power Plant.**

AES Solar Energy Limited (AES) proposes to develop a 10 MW, Solar Power Plant approximately 126 km south west of Upington in the Northern Cape (see attached figure for site location). It is intended that the electricity generated by the solar plant would feed into the national power grid through Eskom's Aries substation located 400 m from the proposed site.

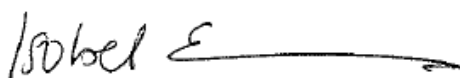
The proposed development includes the installation and operation of solar panels with a projected output of 10 MW. The solar panels would be photovoltaic (PV) arrays, and together these panels and associated infrastructure would occupy an area of less than 20 ha (0.2 km<sup>2</sup>).

These activities will require environmental authorisation from the Department of Environmental Affairs (DEA) through a Basic Assessment Report (BAR). ERM Southern Africa (Pty) Ltd (ERM) has been appointed to undertake the BAR.

This letter serves as notification of the commencement of the public participation process for the BAR. Please feel free to distribute this document to others you feel may be interested or affected by the proposed project. To comment on the proposed project and/or to register as an Interested and Affected Party (I&AP) please contact Isobel Evans or Linda Slabber of ERM **before 27 June 2011**.

Do not hesitate to contact me should you have any queries.

Yours sincerely,



Isobel Evans  
Consultant

Email:  
[Isobel.evans@erm.com](mailto:Isobel.evans@erm.com)

Postal Address:  
Postnet Suite 90  
Private Bag X12  
Tokai, 7966  
Cape Town  
South Africa

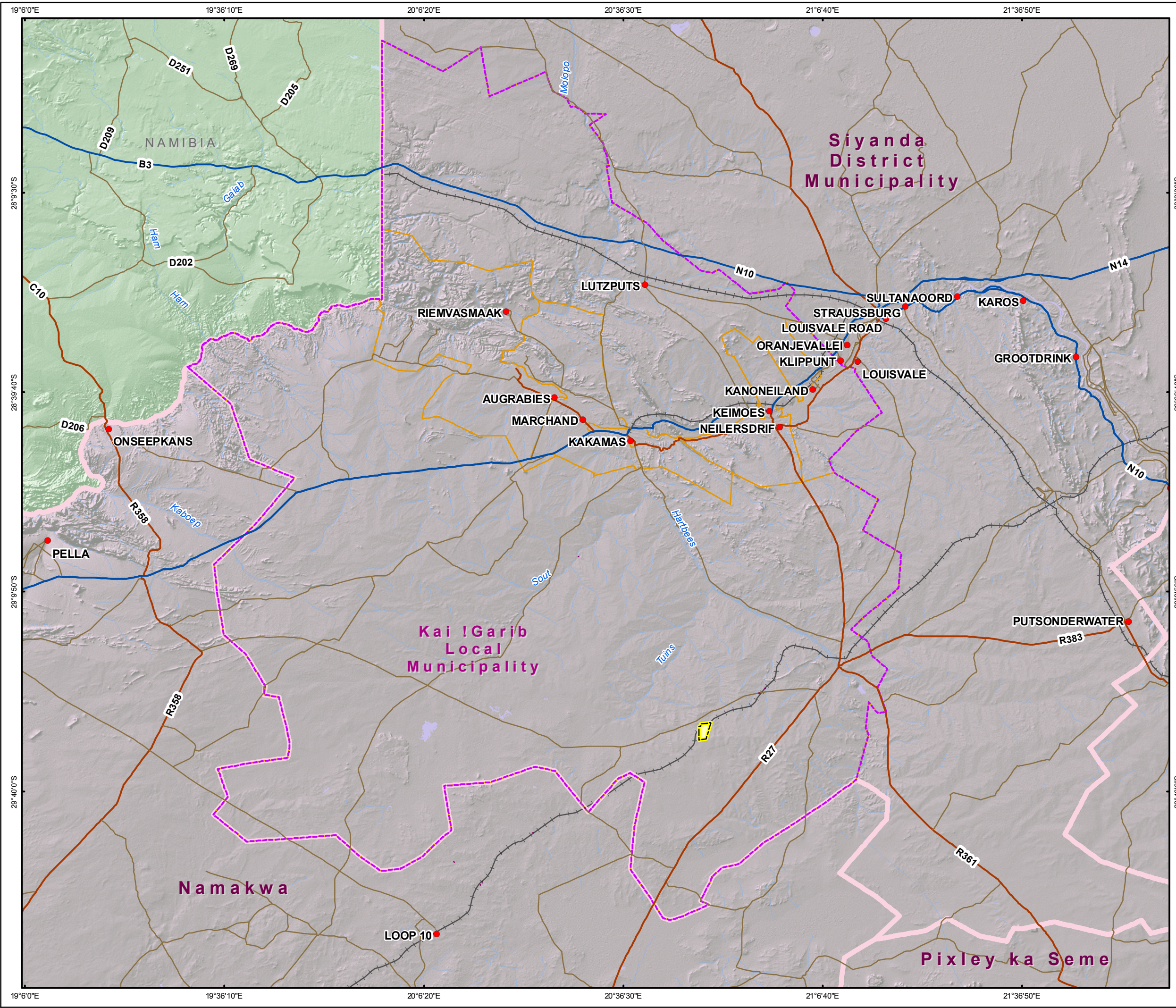
Registered Company address:  
Environmental Resources  
Management  
Southern Africa (Pty) Ltd  
Building 23, 2<sup>ND</sup> Floor  
The Woodlands Office Park,  
Woodlands Drive  
Woodmead, 2148

Company registration number  
2003/001404/07

Directors  
Jeremy Soboil (Managing)  
Claudio Bertora (Italy)  
Johanita Kotze  
John Alexander (UK)  
John Simonson (US)

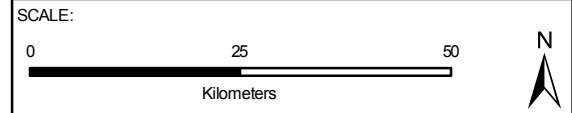
Offices worldwide

A member of the  
Environment Resources  
Management Group



**Legend**

- Towns
- National Road
- Main Road
- Main Road
- +— Railway Line
- River
- ▭ Site Boundary
- ▭ Wards
- ▭ Kai !Garib Local Municipality
- ▭ District Municipalities
- ▭ Northern Cape



TITLE:  
**Figure 5.5: Administrative Structure**

CLIENT:  
**AES Solar Energy Ltd**

DATE: May 2011	CHECKED: IE	Project: 0126393
DRAWN: AB	APPROVED: SHC	SCALE: 1 : 1 000 000
DRAWING: 0126393_AES_Locality_Rev1.mxd		REV: 1

**ERM**  
 Building 32,  
 The Woodlands,  
 Woodlands Drive,  
 Woodmead, 2148  
 Johannesburg, South Africa  
 Tel: +27 (0)11 798 4300  
 Fax: +27 (0)11 804 2289

Projection: Geographic, Datum: Hartbeesthoek 1994  
 Source: Enpat (2001), Demarcation Board (Dec 2005)  
 Inset: ESRI Data and Maps

SIZE:  
**A3**