

**DEPARTMENTAL THREE
BEDROOMED RESIDENTIAL
ACCOMMODATION BUILT IN
ALTERNATIVE METHOD OF
CONSTRUCTION AT
ITCHELEJUBA HOSPITAL**

LIGHT STEEL FRAMEWORK



*K*waZulu-Natal Department of Health

PRINCIPAL IN CHOOSING ALTERNATIVE CONSTRUCTION METHODS

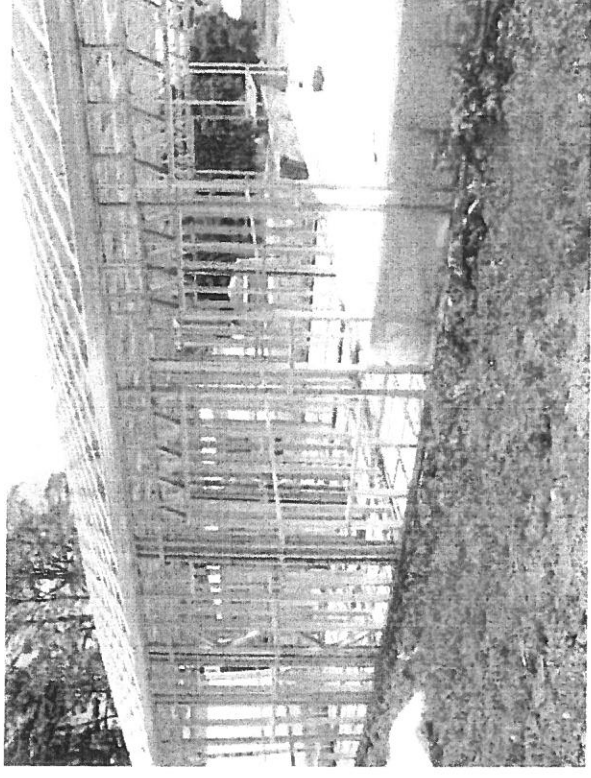
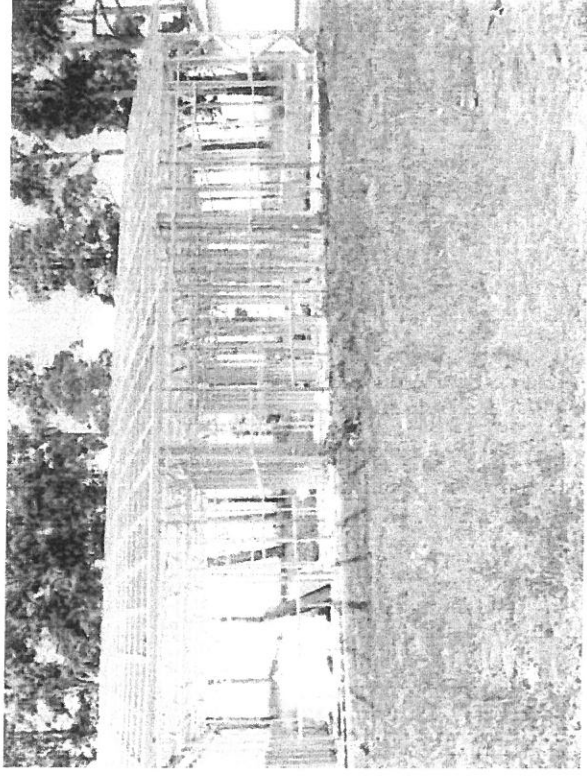
THE PROVISION OF ALTERNATE BUILDING SYSTEMS TO FAST TRACK SERVICE DELIVERY:

1. MEETS SANS O400 AND AGREEMENT CERTIFICATE REQUIREMENTS
2. LIFE LONG DURABILITY
3. ENERGY EFFICIENT WITH REGARDS TO INSULATION REQUIREMENTS
4. SPEED IN CONSTRUCTION WHICH RESULTS IN REDUCING OVERHEADS AND INCREASE SERVICE DELIVERY
5. COST EFFECTIVE OF +/- 35% CHEAPER THAN CONVENTIONAL BRICKS AND MORTAR CONSTRUCTION
6. DEPARTMENTAL RESIDENTIAL UNIT IS 87sq/m IN AREA
7. CONSTRUCTION PERIOD 10 WEEKS



KwaZulu-Natal Department of Health

THREE BEDROOMED DEPARTMENTAL RESIDENTIAL UNIT

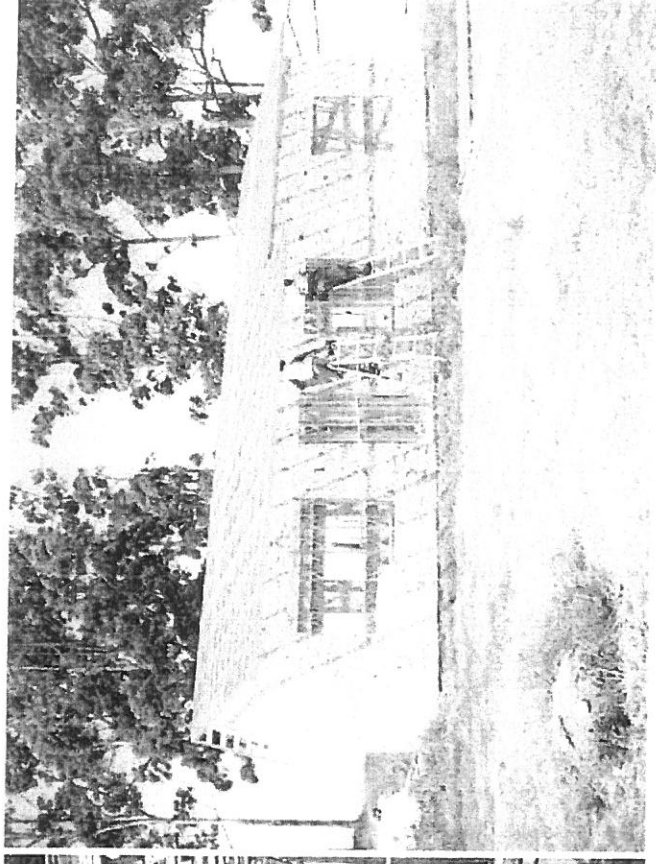
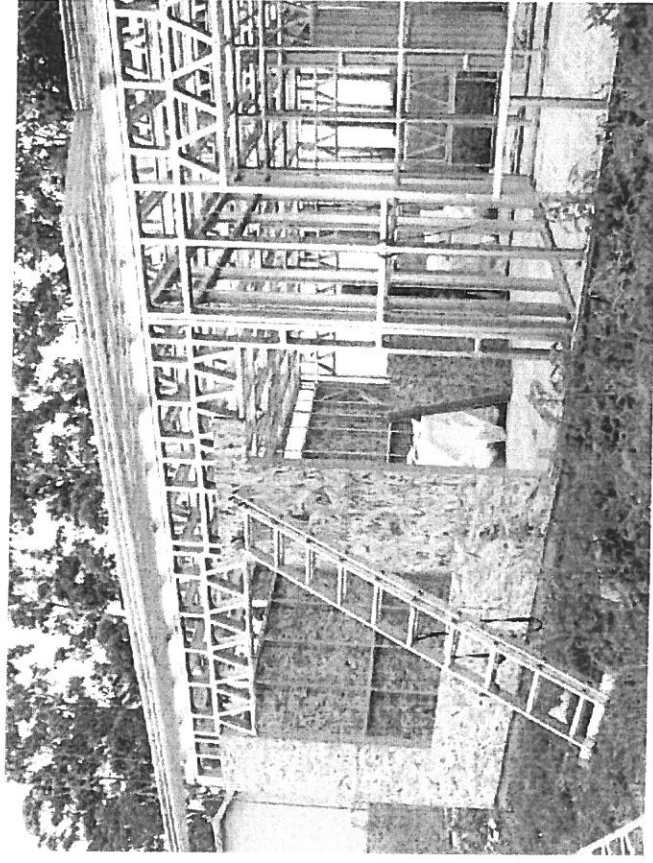


**STEEL FRAMEWORK STRUCTURE PRIOR TO OSB RESIN
IMPREGNATED BOARD EXTERNAL CLADDING**



KwaZulu-Natal Department of Health

THREE BEDROOMED DEPARTMENTAL RESIDENTIAL UNIT



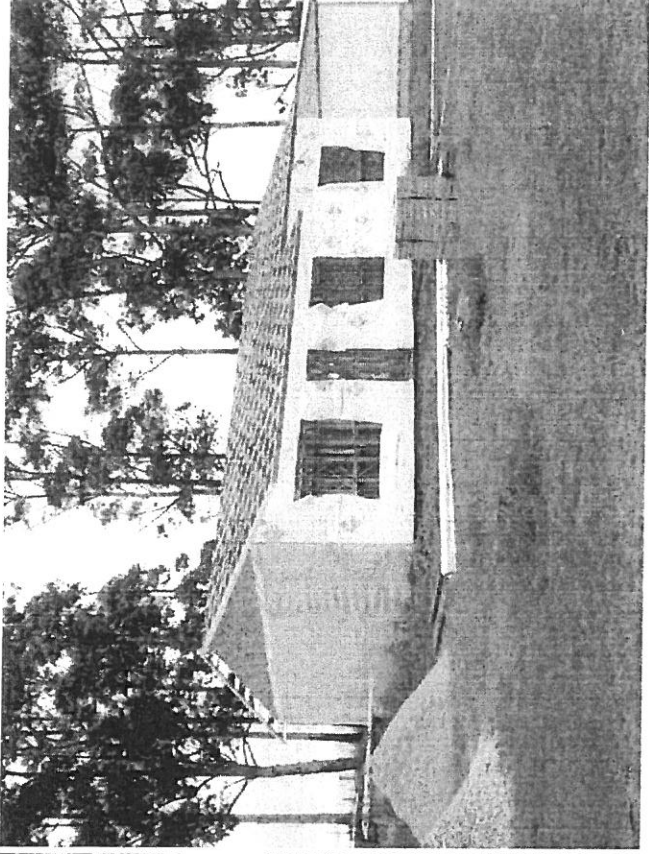
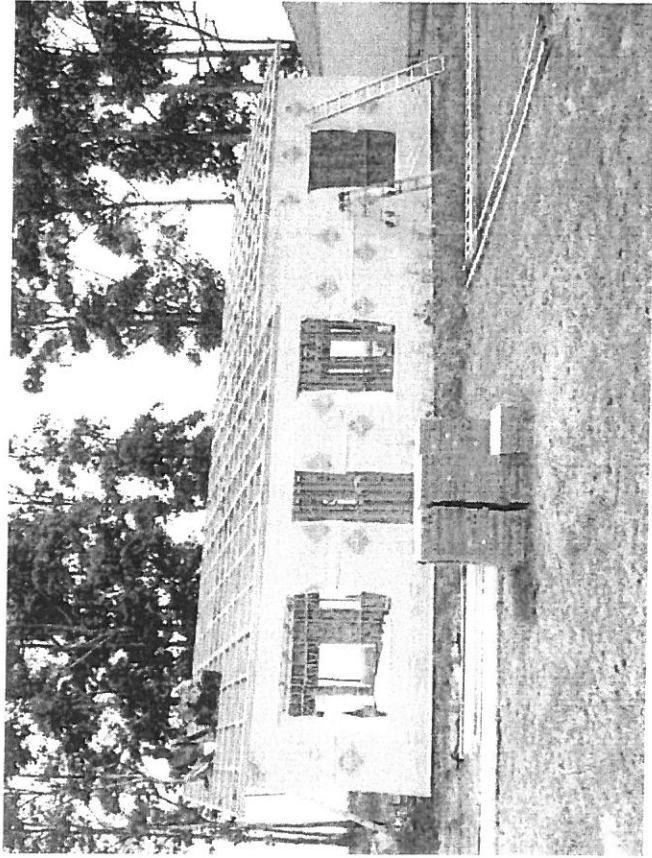
OSB RESIN IMPREGNATED BOARD CLADDING TO STEEL FRAMEWORK



HEALTH
KwaZulu-Natal

*K*waZulu-Natal Department of Health

THREE BEDROOMED DEPARTMENTAL RESIDENTIAL UNIT

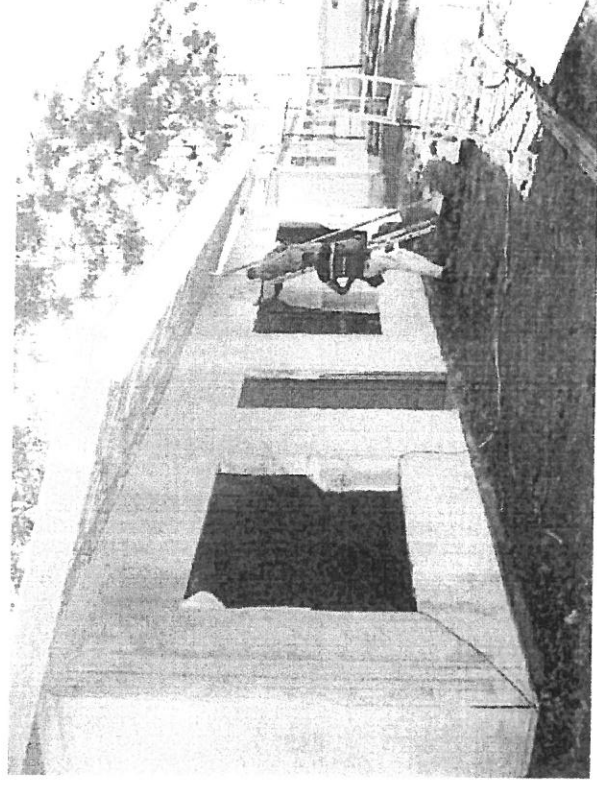
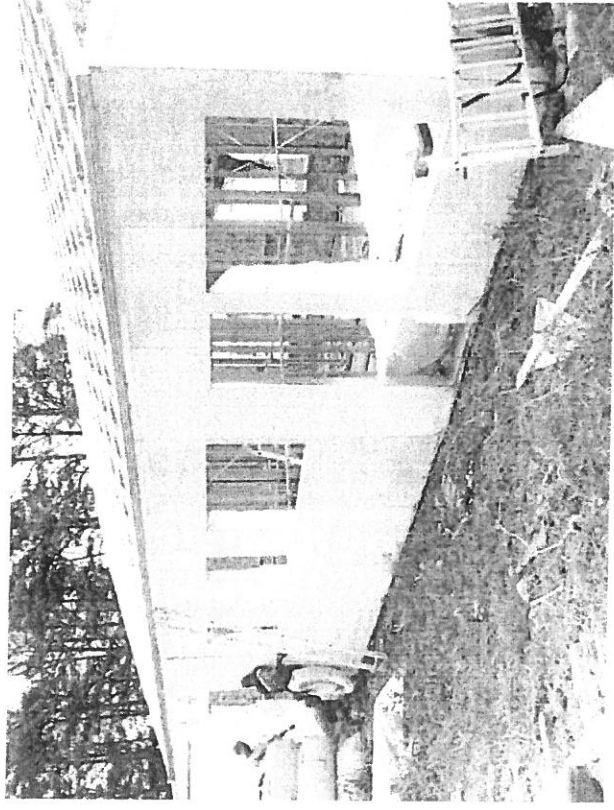


PVC SHEET WATER PROOFING BETWEEN OSB BOARD AND FIBRE CEMENT
CLADDING



KwaZulu-Natal Department of Health

THREE BEDROOMED DEPARTMENTAL RESIDENTIAL UNIT



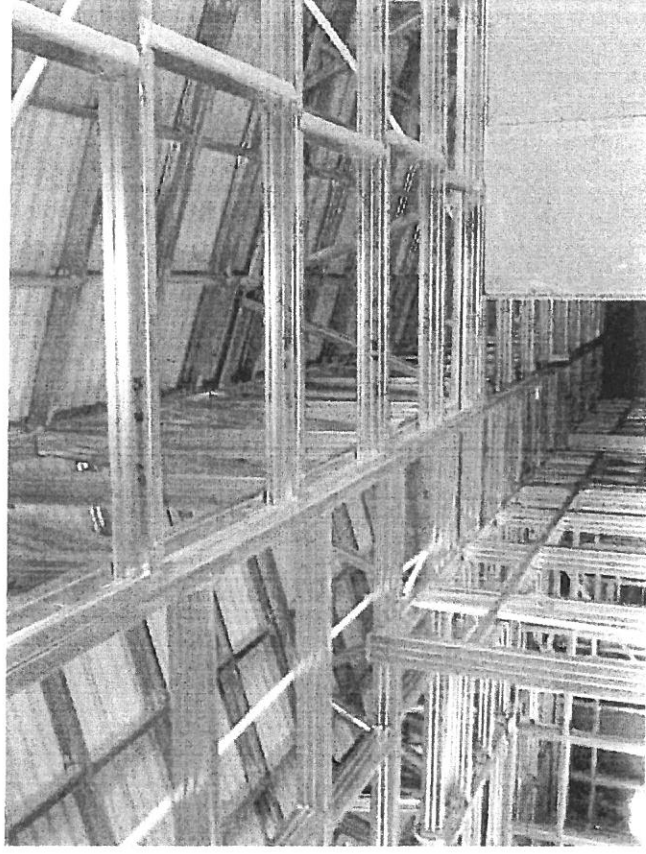
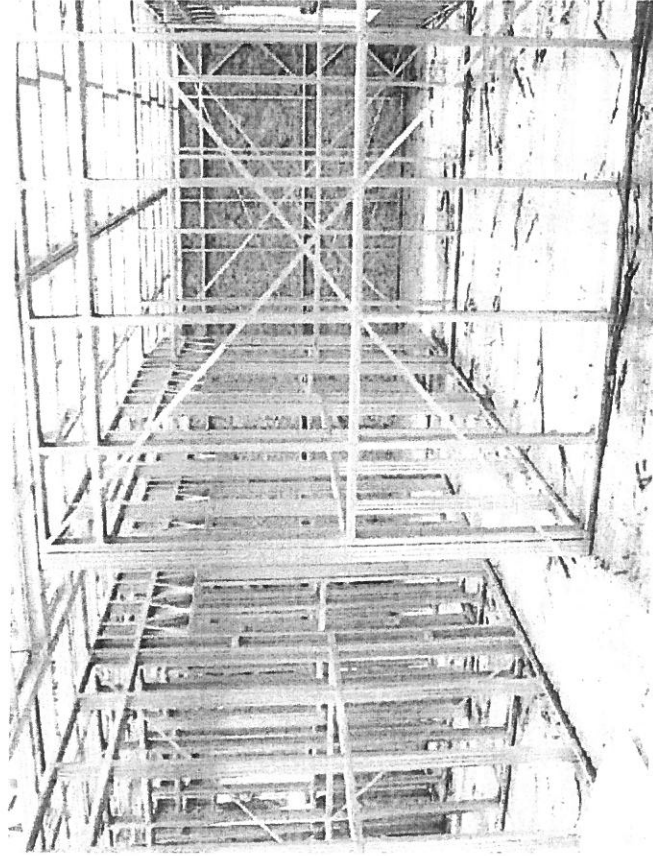
**REAR ELEVATION AND FRONT ELEVATION WITH 9mm FIBRE CEMENT
BOARD CLADDING OVER OSB BOARDING AND PVC SHEET
WATERPROOFING**



HEALTH
KwaZulu-Natal

*K*waZulu-Natal Department of Health

THREE BEDROOMED DEPARTMENTAL RESIDENTIAL UNIT

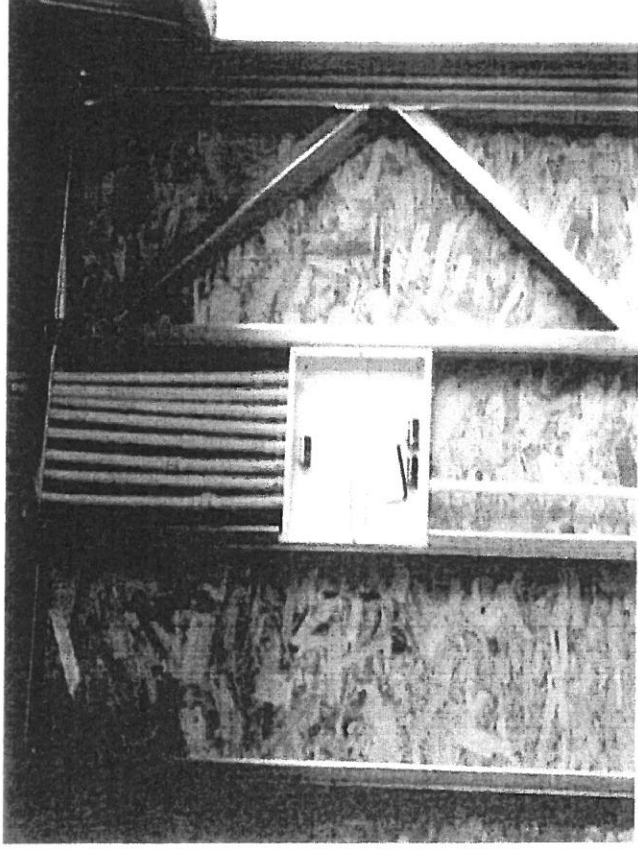


INTERNAL STEEL FABRICATION AND ROOF STRUCTURE

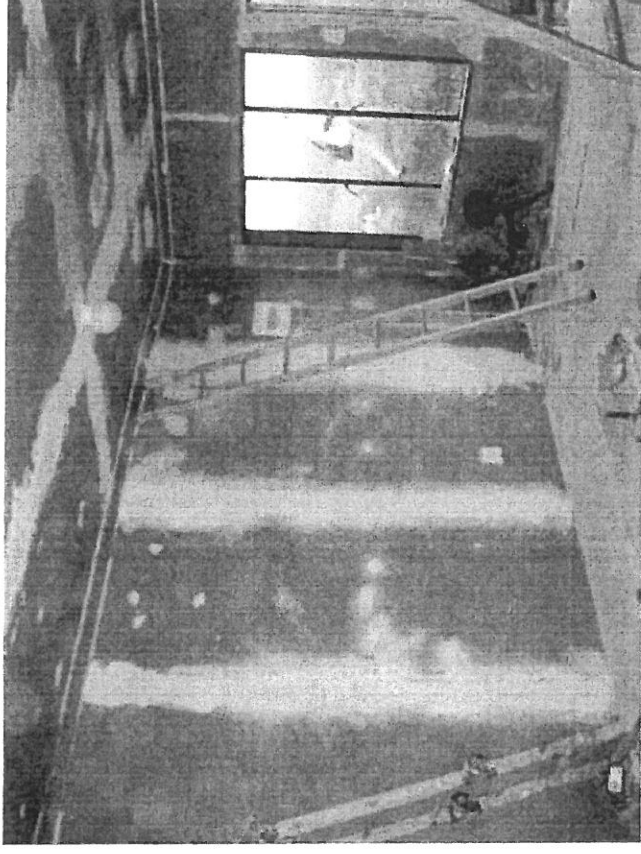


*K*waZulu-Natal Department of Health

THREE BEDROOMED DEPARTMENTAL RESIDENTIAL UNIT



ELECTRICAL DB INSTALATION

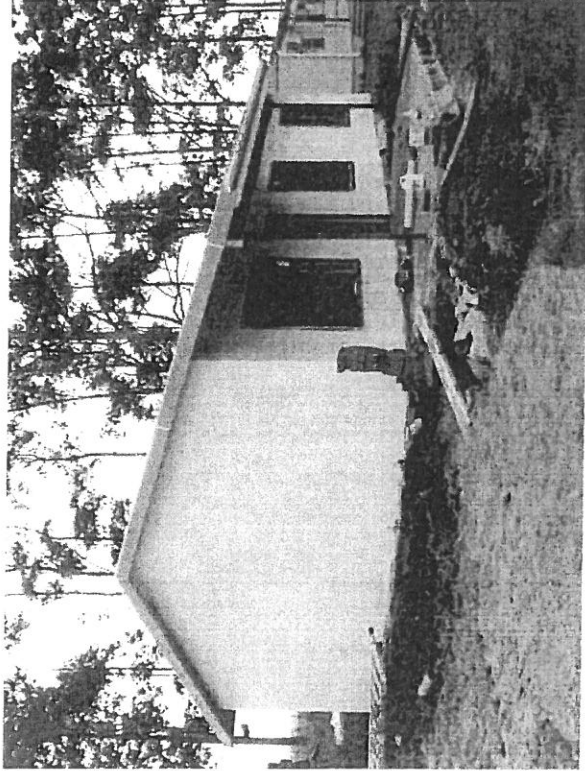


INTERNAL 9,5mm FIRESTOP
GYPSUM BOARD CLADDING
IN DINING ROOM

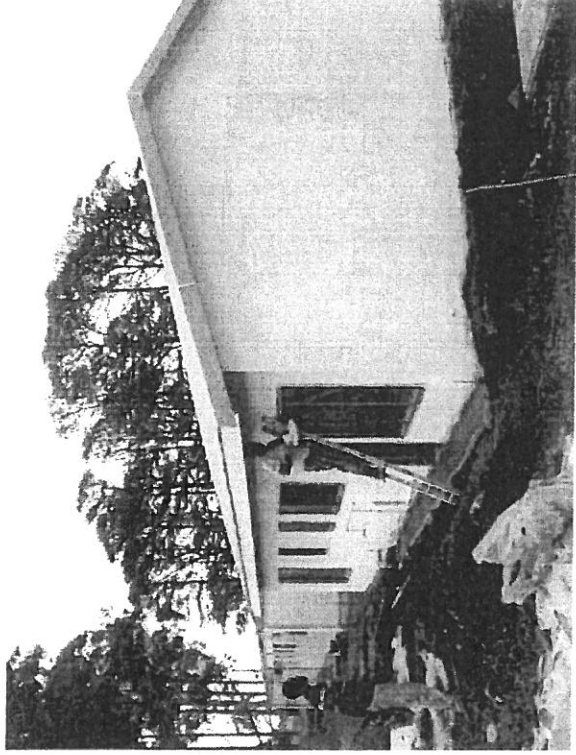


*K*waZulu-Natal Department of Health

THREE BEDROOMED DEPARTMENTAL RESIDENTIAL UNIT



**FRONT ELEVATION DURING
SKIMMING COMPLETION**

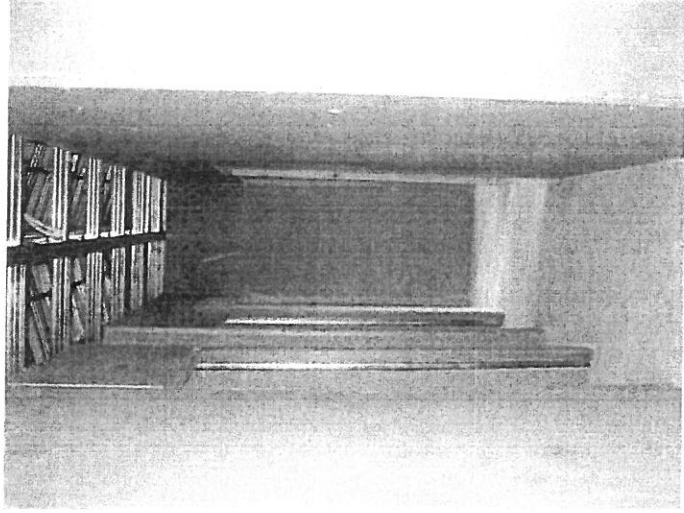


**REAR ELEVATION DURING
SKIMMING COMPLETION**

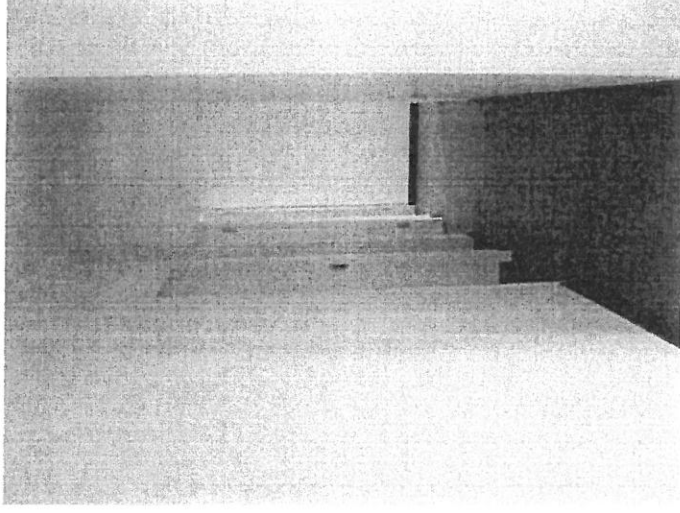


KwaZulu-Natal Department of Health

THREE BEDROOMED DEPARTMENTAL RESIDENTIAL UNIT



PASSAGE DURING FINISHING



COMPLETED PASSAGE

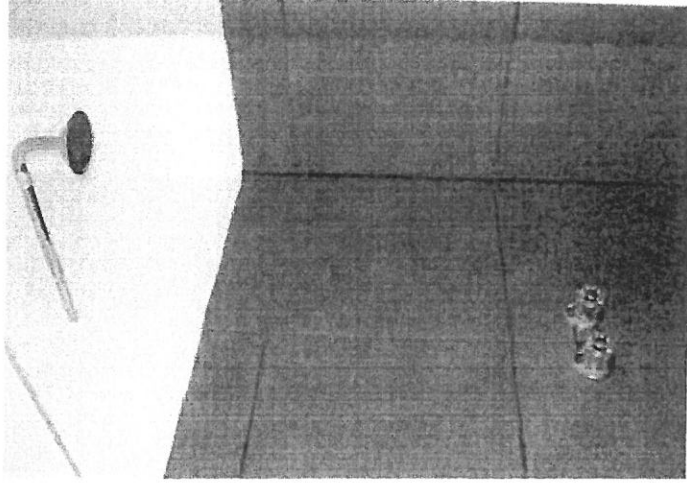


*K*waZulu-Natal

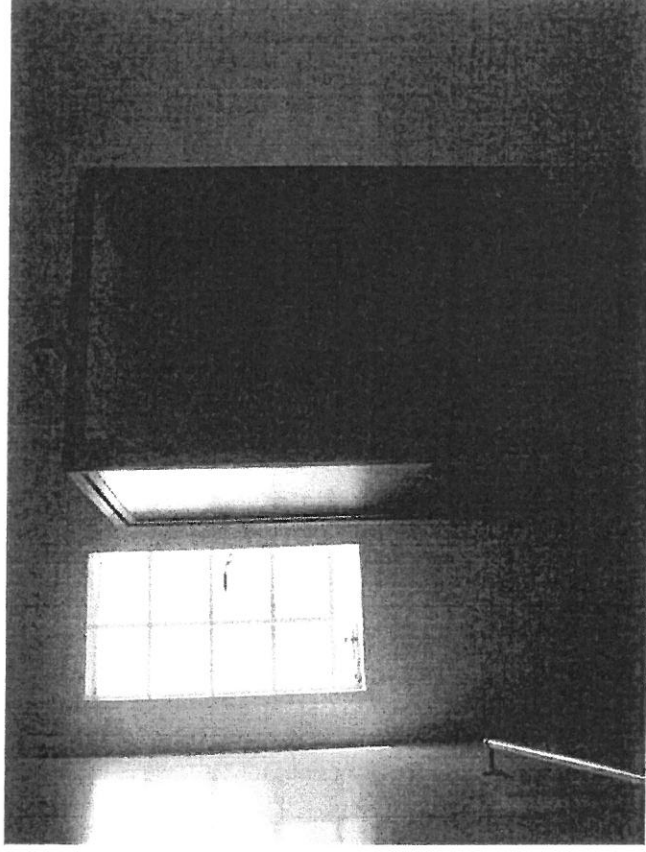
HEALTH
KwaZulu-Natal

Department of Health

THREE BEDROOMED DEPARTMENTAL RESIDENTIAL UNIT



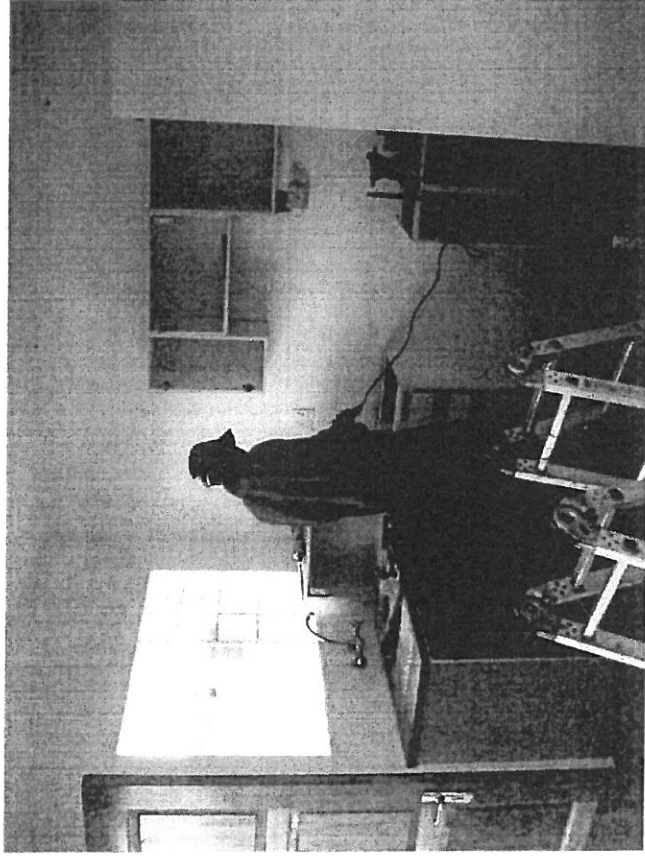
SHOWER AREA



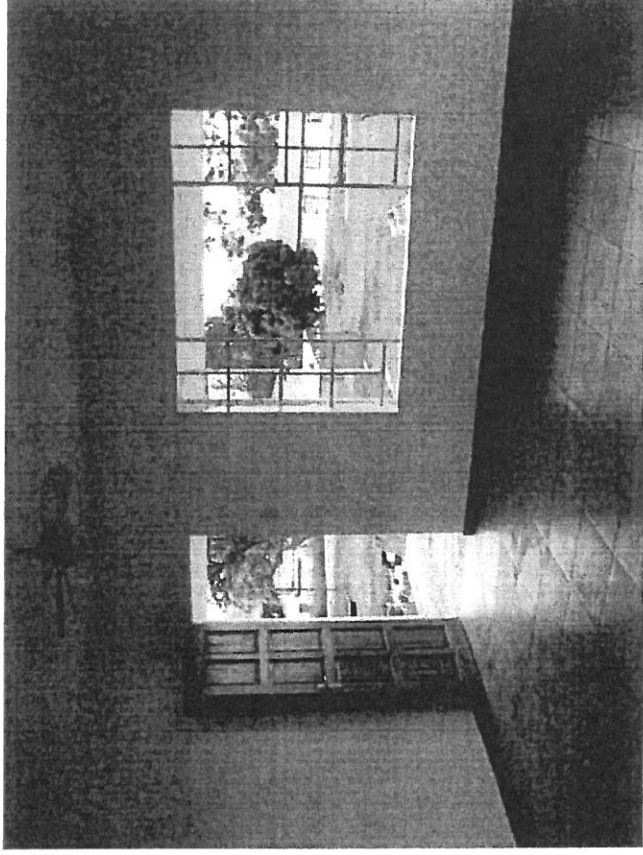
COMPLETED SHOWER CUBICLE ENCLOSURE



THREE BEDROOMED DEPARTMENTAL RESIDENTIAL UNIT



KITCHEN INSTALLATION

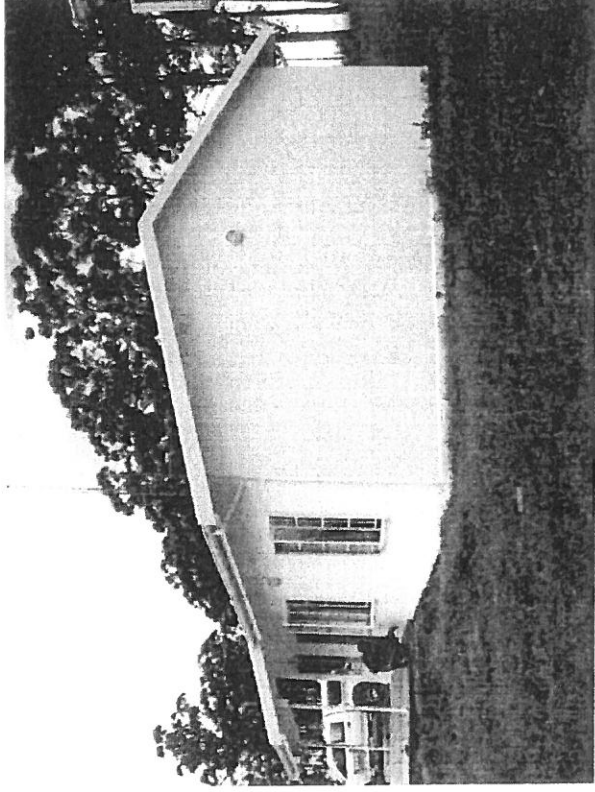


COMPLETED LOUNGE

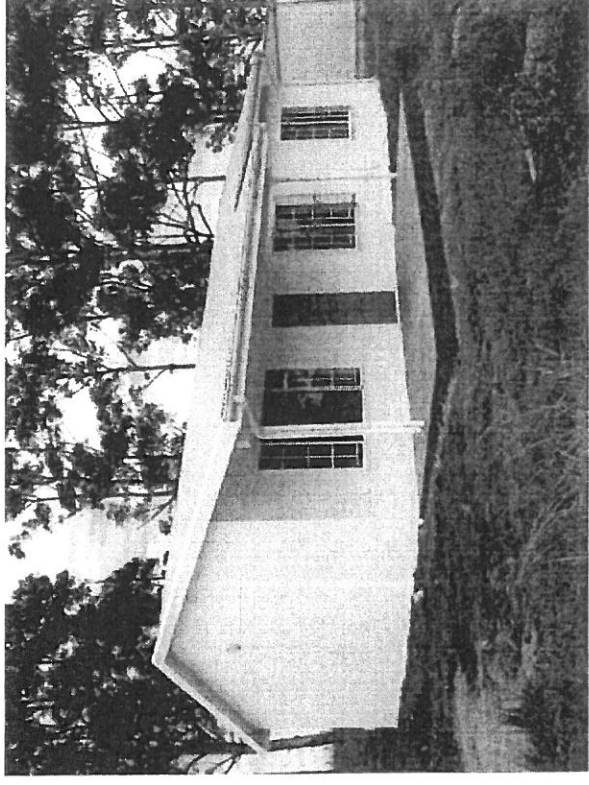


*K*waZulu-Natal Department of Health

THREE BEDROOMED DEPARTMENTAL RESIDENTIAL UNIT



SIDE ELEVATION COMPLETED



FRONT ELEVATION COMPLETED



KwaZulu-Natal Department of Health

CONTACT DETAILS

PRINCIPAL TECHNICAL ADVISOR,
INFRASTRUCTURE DEVELOPMENT AND CLINICAL
SUPPORT:

G.B.PIKE

033 – 341 7039

gordon.pike@kznhealth.gov.za



*K*waZulu-Natal Department of Health