



AMAFA PHOTOGRAPHIC REPORT FOR PROPOSED ADDITIONS AND ALTERATIONS TO 1236 SOUTH COAST ROAD, MOBENI, DURBAN



Figure 1). Image illustrates a South Eastern façade view of the existing Laboratory building in which the first-floor items are proposed for demolition.



Figure 2.) Image illustrates a South Eastern façade view of the existing Laboratory building in which the part demolition of the canopy is proposed. Image also illustrates existing covered area adjacent to the laboratory, which shall remain in its current state.



Figure 3.) Image illustrates a part Eastern façade view of the existing Laboratory building in which the demolition of the First floor is proposed. Image also illustrates existing covered area adjacent to the laboratory, which shall remain in its current state. To the far right of the image, the existing staff quarters can be seen in its context, which is also proposed for demolition.



Figure 4.) Image illustrates Eastern façade view of the existing Laboratory building in which the demolition of the First floor is proposed. To the far right of the image, the existing staff quarters can be seen in its context, which is also proposed for demolition.



Figure 5.) Image illustrates Eastern façade view of the existing Laboratory building in which the demolition of the First floor is proposed.



Figure 6.) Image illustrates North Eastern façade view of the existing Laboratory building in which the demolition of the First floor is proposed.



Figure 7.) Image illustrates Northern façade view of the existing Laboratory building in which the demolition of the First floor is proposed.



Figure 8.) Image illustrates part North west/Western façade view of the existing Laboratory building in which the demolition of the First floor is proposed.



Figure 9.) Image illustrates Western façade view of the existing Laboratory building in which the demolition of the First floor is proposed.



Figure 10.) Image illustrates South Western façade view of the existing Laboratory building in which the demolition of the First floor is proposed.



Figure 11.) Image illustrates South Western/South façade view of the existing Laboratory building in which the demolition of the First floor is proposed.



Figure 12.) Image illustrates first floor internals. The proposed includes demolition of all first-floor items.



Figure 13.) Image illustrates first floor internals. The proposed includes demolition of all first-floor items.



Figure 14.) Image illustrates first floor internals. The proposed includes demolition of all first-floor items.



Figure 15.) Image illustrates first floor internals. The proposed includes demolition of all first-floor items.



Figure 16.) Image illustrates first floor internals. The proposed includes demolition of all first-floor items.



Figure 17.) Image illustrates first floor internals. The proposed includes demolition of all first-floor items.



Figure 17.) Image illustrates first floor internals. The proposed includes demolition of all first-floor items.



Figure 18.) Image illustrates first floor internals. The proposed includes demolition of all first-floor items.



Figure 19.) Image illustrates first floor internals. The proposed includes demolition of all first-floor items.



Figure 20.) Image illustrates first floor internals. The proposed includes demolition of all first-floor items.



Figure 21.) Image illustrates Ground floor internals (laboratory) .. Refer to plans for items that are removed, refurbished or demolition.



Figure 22.) Image illustrates Ground floor internals (laboratory) .. Refer to plans for items that are removed, refurbished or demolition.



Figure 23.) Image illustrates Ground floor internals (laboratory) .. Refer to plans for items that are removed, refurbished or demolition.



Figure 24.) Image illustrates Ground floor internals (laboratory) .. Refer to plans for items that are removed, refurbished or demolition.



Figure 25.) Image illustrates Ground floor internals(laboratory) . Refer to plans for items that are removed, refurbished or demolition.



Figure 25.) Image illustrates Ground floor internals (north façade). Refer to plans for items that are removed, refurbished or demolition.



Figure 26.) Image illustrates Ground floor internals (ablutions). Refer to plans for items that are removed, refurbished or demolition.



Figure 27.) Image illustrates Ground floor internals (ablutions). Refer to plans for items that are removed, refurbished or demolition.



Figure 28.) Eastern view of staff quarters. Building is proposed for demolition given the condition of the structure.



Figure 29.) North Eastern view of staff quarters. Building is proposed for demolition given the condition of the structure.



Figure 30.) North/North west view of staff quarters. Building is proposed for demolition given the condition of the structure.



Figure 31.) West view of staff quarters. Building is proposed for demolition given the condition of the structure.



Figure 32.) Internal view of staff quarters.



Figure 33.) Internal view of staff quarters ablutions.



Figure 34.) Internal view of staff quarters first floor.



Figure 35.) View illustrating spalling concrete staircase.



Figure 36.) View illustrating North western façade of office building & storage unit. Refer to plans for list of proposed works.



Figure 37.) View illustrating North western façade of office building & storage unit. Refer to plans for list of proposed works.



Figure 37.) View illustrating north western façade of office building & storage unit. Refer to plans for list of proposed works.



Figure 38.) View illustrating the area in which the side view of the garage/workshop



Figure 39.) View illustrating the north west façade of the garage bays that are proposed for demolition. Clearly indicative of the deteriorative conditions and safety hazard.



Figure 40.) View illustrating the South Eastern façade of the garage bays that are proposed for demolition as well as the façade of the office building. Clearly indicative of the deteriorative conditions and safety hazard.



Figure 41.) View illustrating the internals of the garage Store. Refer to plans for list of additions, alterations & proposed demolition



Figure 42.) View illustrating the internals of the garage Store and plant room. Refer to plans for list of additions, alterations & proposed demolition



Figure 43.) View illustrating the internals of the garage Store and plant room. Refer to plans for list of additions, alterations & proposed demolition.



Figure 44.) View illustrating the internals of the garage bays. Refer to plans for list of additions, alterations & proposed demolition.



Figure 45.) View illustrating the internals of the garage Store, ablutions and adjacent office building canopy. Refer to plans for list of additions, alterations & proposed demolition.



Figure 46.) View illustrating the front facade of the garage bays. Refer to plans for list of additions, alterations & proposed demolition.



Figure 47.) View illustrating the internals of the ablutions. Refer to plans for list of additions, alterations & proposed demolition.



Figure 48.) View illustrating Eastern façade of the garage and storerooms. Refer to plans for list of additions, alterations & proposed demolition.



Figure 49.) View illustrating the wide-angle view of the garage Store, and office building. Refer to plans for list of additions, alterations & proposed demolition.

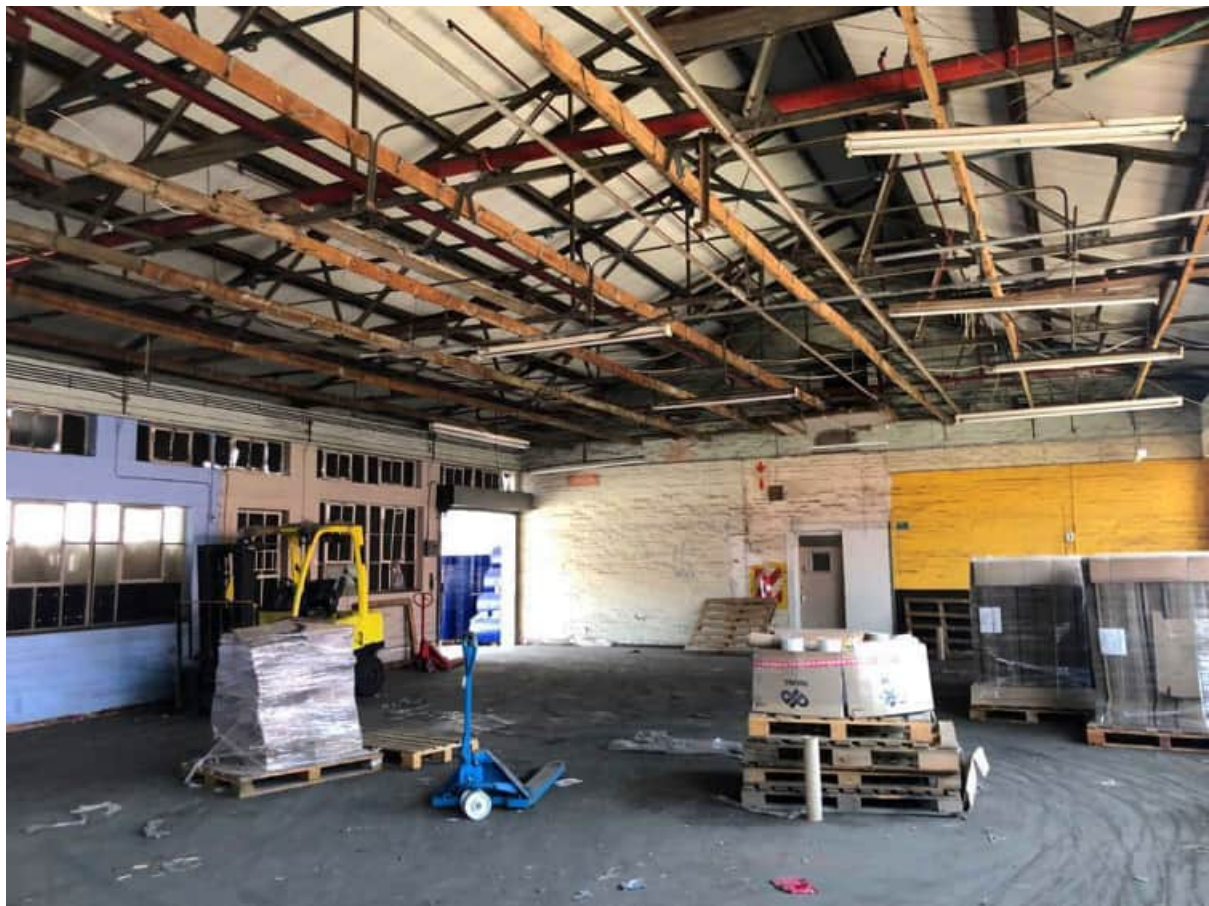


Figure 50.) View illustrating the internals of the office building and store. Refer to plans for list of additions, alterations & proposed demolition.



Figure 51.) View illustrating the internals of the office building and store. Refer to plans for list of additions, alterations & proposed demolition.



Figure 52.) View illustrating the internals of the office building and store. Refer to plans for list of additions, alterations & proposed demolition.



Figure 53.) View illustrating the internals of the office building and store. Refer to plans for list of additions, alterations & proposed demolition.



Figure 54.) View illustrating the internals of the office building and store. Refer to plans for list of additions, alterations & proposed demolition.



Figure 55.) View illustrating the south eastern façade of the office building and transformer room. Refer to plans for list of additions, alterations & proposed demolition.



Figure 55.) View illustrating the eastern façade of the office building and transformer room. Refer to plans for list of additions, alterations & proposed demolition.