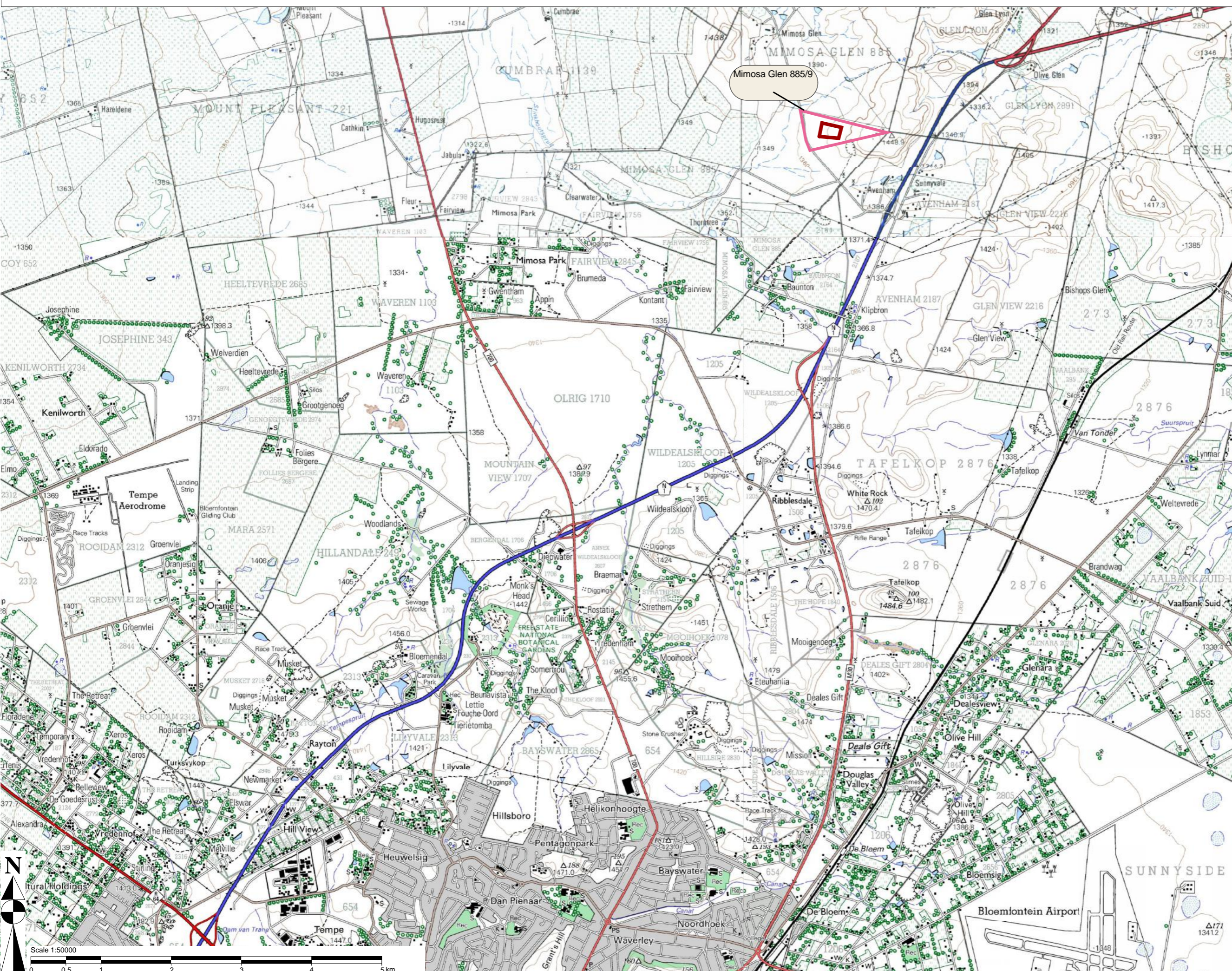


**Locality map: Proposed application for a mining permit i.t.o. NEMA, 1998 and the MPRDA, 2002 on the farm Mimosa Glen 885/9, Bloemfontein district**



**Legend**

- Mimosa Glen 885/9 Bloemfontein
- Mimosa Glen 885/9 (of 6)
- Proposed permit area (4.9ha)

**Applicant:**



AMC Umsenge Quarry (Pty) Ltd

Contact: Mr. Zane Murray  
Tel: 051 451 2604

February 2019

**Study area:**  
Mimosa Glen 885/9  
Bloemfontein Magisterial District

**Site coordinates:**

	East	South
A	26.261199	-28.987596
B	26.261599	-28.985862
C	26.264444	-28.986419
D	26.264018	-28.987814

**Consultant:**  
Lefatse EPS (Pty) Ltd  
H van Jaarsveld  
hanri@lefatsemail.co.za

