

# DIGBY WELLS

ENVIRONMENTAL

## BACKGROUND INFORMATION DOCUMENT

### PROSPECTING RIGHT APPLICATION FOR RUSTENBURG PLATINUM MINES LIMITED ON FARM WITRAND 103 IS EMALAHLENI MAGISTERIAL DISTRICT, MPUMALANGA PROVINCE

*December 2013*

**Project Number:**  
ANG2605

**Prepared for:**  
Rustenburg Platinum Mines Limited

**For any project related information please contact:**

**Digby Wells Environmental – Stakeholder Engagement Office**

*Vanessa Viljoen or Qondile Monareng*

*Tel: (011) 789 9495 or Fax: 086 583 5715*

*Email: [vanessa.viljoen@digbywells.com](mailto:vanessa.viljoen@digbywells.com) or [qondile.monareng@digbywells.com](mailto:qondile.monareng@digbywells.com)*

*Website: [www.digbywells.com](http://www.digbywells.com) (Resources: Public Documents)*

*DMR Reference Number: MP 30/5/1/1/2/11685 PR*

Digby Wells and Associates (International) Limited (Subsidiary of Digby Wells & Associates (Pty) Ltd). Co. Reg. No. 07264148.

Henwood House, Henwood, Ashford, Kent, TN24 8DH, United Kingdom  
Tel: +44 123 363 1062, Fax: +44 123 361 9270, [info@digbywells.com](mailto:info@digbywells.com), [www.digbywells.com](http://www.digbywells.com)

Directors: AR Wilke (South African), AJ Reynolds, GE Trusler (C.E.O) (South African)

## 1 PURPOSE OF DOCUMENT

Rustenburg Platinum Mines Limited (RPM), a subsidiary of Anglo American Platinum Limited (Anglo American Platinum), has applied for a Prospecting Right on Farm Witrand 103 IS in the Goven Mbeki Local Municipality area and the eMalahleni magisterial district in terms of Section 16 of the Mineral and Petroleum Resources Development Act, 2002(Act No. 28 of 2002) (MPRDA). This Background Information Document (BID) has been developed in order to:

- Share information about the proposed project;
- Present the Prospecting Right Application process according to South African legislation; and
- Provide more detail about the Public Participation Process (PPP) which will be followed.

### 1.1 *Appointed Environmental Assessment Practitioners*

Anglo American Platinum has appointed Digby Wells Environmental (Digby Wells), as independent Environmental Assessment Practitioners (EAP), to compile an Environmental Management Plan (EMP) and to undertake the PPP for the respective Prospecting Right Application.

## 2 PROJECT DESCRIPTION

The Prospecting Right Application has been submitted for the prospecting of Platinum Group Metals (PGMs), and associated minerals, on various Portions and Remaining Extents of Portions for the farm Witrand 103 IS.

The Prospecting Right area applied for is located approximately 15 km north west of Bethal in the Goven Mbeki Local Municipality area and magisterial district of eMalahleni, Mpumalanga Province (*see Plan 1*).The proposed prospecting activities will occur on the following farms:

Application number	Farms
MP 30/5/1/1/2/11685 PR	Portions 2, 3, 4, 5, 6, 7, 13, 14, 15, 18, 19, 20, 22, 23, 25 and the Remaining Extents of Portions 8, 10, 11, and 12 for the Farm Witrand 103 IS

Prospecting activities will be undertaken over a period of five (5 years) and the application is for both invasive and non-invasive methods. Invasive methods are activities that result in land disturbances and comprise of diamond core drilling, sampling and sampling storage. Non-invasive methods are methods that do not cause disturbances to the land and include desktop research and include detailed geophysical surveys. It is anticipated that one (1) borehole will be drilled each Minerals that would be prospected for include PGMs (palladium, rhodium, iridium, osmium and platinum), gold, copper, nickel, cobalt, silver and chrome. Stakeholders affected by the proposed prospecting during the prospecting period will be consulted before any activities take place.

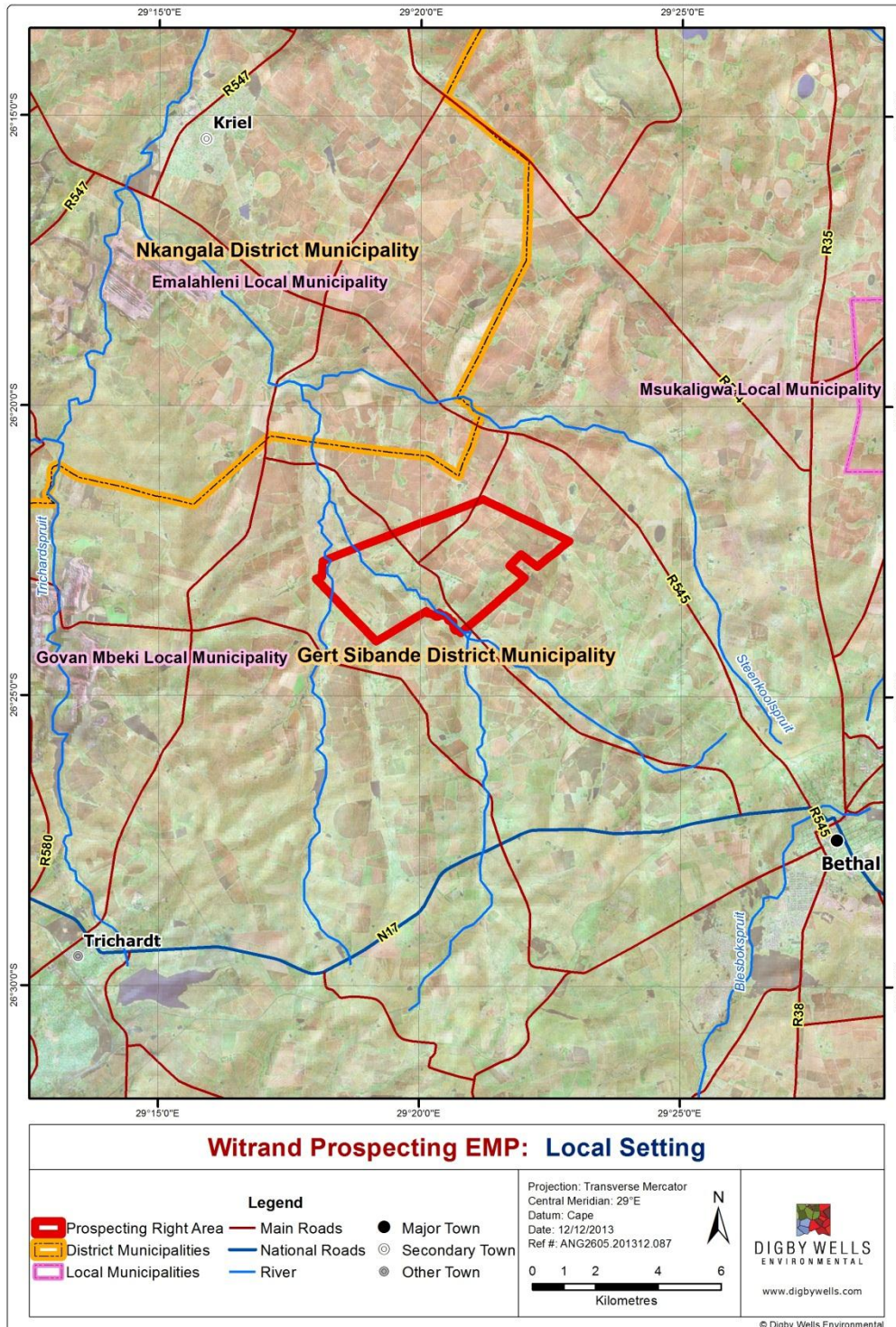
BACKGROUND INFORMATION DOCUMENT

Application for Prospecting Rights on Farm Witrand

ANG2605



DIGBY WELLS  
ENVIRONMENTAL



Plan 1: Witrand Local Setting

## PROSPECTING RIGHT APPLICATION PROCESS AND PUBLIC PARTICIPATION

### 2.1 *Legislation*

In terms of the MPRDA, RPM is required to consult with Interested and Affected Parties (I&APs). Comments received from I&APs will be recorded and included in the EMP which will be submitted to the Department of Mineral Resources (DMR) in Mpumalanga Province.

The EMP will be compiled and implemented to ensure that potential impacts of the proposed prospecting activities are mitigated and managed. It will contain results from desktop assessments that will be conducted by specialists for fauna and flora, heritage, social, hydrology (surface water), geohydrology (groundwater) and soil and land capability. According to the MPRDA, the EMP need to include the following activities but is not limited to:

The Department of Mineral Resources (DMR) is the decision-making authority for the EMP Process.

- Describing the environment that is likely to be affected by the proposed prospecting;
- Identifying the potential impacts;
- Assessing the significance of the potential impacts of the proposed project on the environment, socio economic conditions and cultural heritage; and
- Evaluating the proposed mitigation measures to minimise negative impacts.

### 2.2 *Public Participation*

Stakeholders affected by or who are interested in the proposed project are invited to register as an I&AP in order to become involved in the PPP. The following anticipated dates are important to note for the PPP going forward:

- Announcement of the Witrand Prospecting Right Application: : *December 2013*
- Stakeholder engagement and consultation: : *December 2013*
- Submission of the Consultation Report : *January 2014*
- Submission of the EMP: *04 February 2014*

Contributions from stakeholders will assist in informed decision-making for authorities and provides information to be considered by the project team and specialists conducting research. All comments can be submitted using the contact details which appear on the cover page or as part of the Comment and Registration Sheet.