

# DIGBY WELLS

## ENVIRONMENTAL

### BACKGROUND INFORMATION DOCUMENT

### PROSPECTING RIGHT APPLICATION FOR RUSTENBURG PLATINUM MINES LIMITED ON FARM ONVERWACHT 97 IS EMALAHLENI LOCAL MUNICIPALITY, MPUMALANGA PROVINCE

DMR Reference Number: MP 30/5/1/1/2/11684 PR

*January 2014*

**Project Number:**

ANG2615

**Prepared for:**

Rustenburg Platinum Mines Limited (subsidiary of Anglo American Platinum Limited)

**For any project related information please contact:**

**Digby Wells Environmental – Stakeholder Engagement Office**

Vanessa Viljoen or Lerato Ratsoenyane

Tel: (011) 789 9495 or Fax: 086 583 5715

Email: [vanessa.viljoen@digbywells.com](mailto:vanessa.viljoen@digbywells.com) or

[lerato.ratsoenyane@digbywells.com](mailto:lerato.ratsoenyane@digbywells.com)

Website: [www.digbywells.com](http://www.digbywells.com) (Resources: Public Documents)

Digby Wells and Associates (South Africa) (Pty) Ltd  
(Subsidiary of Digby Wells & Associates (Pty) Ltd). Co. Reg. No. 2010/008577/07.  
Fern Isle, Section 10, 359 Pretoria Ave Randburg Private Bag X10046, Randburg,  
2125, South Africa  
Tel: +27 11 789 9495, Fax: +27 11 789 9498, [info@digbywells.com](mailto:info@digbywells.com),  
[www.digbywells.com](http://www.digbywells.com)

Directors: A Sing\*, AR Wilke, LF Koeslag, PD Tanner (British)\*, AJ Reynolds  
(Chairman) (British)\*, J Leaver\*, GE Trusler (C.E.O)

\*Non-Executive



## 1 PURPOSE OF DOCUMENT

Rustenburg Platinum Mines Limited (RPM), a subsidiary of Anglo American Platinum Limited (Anglo American Platinum), submitted a Prospecting Right Application (PRA) in terms of Section 16 of the Mineral and Petroleum Resources Development Act, 2002 (Act No. 28 of 2002) (MPRDA) to the Department of Mineral Resources (DMR), Mpumalanga. This Background Information Document (BID) has been developed in order to:

- Share information about the proposed project;
- Present the Prospecting Right Application process according to the MPRDA; and
- Provide more detail of the Public Participation Process (PPP) to be followed.

### 1.1 Appointed Environmental Assessment Practitioners

Anglo American Platinum has appointed Digby Wells Environmental (Digby Wells), as independent Environmental Assessment Practitioner (EAP), to compile an Environmental Management Plan (EMP) and to undertake the PPP for the respective Prospecting Right Application.

## 2 PROJECT DESCRIPTION

The area for the Prospecting Right applied for is situated on the Farm Onverwacht 97 IS, located approximately 15 kilometres south west of the town of Kriel in the Emalahleni Local Municipality within the Nkangala District Municipality, Mpumalanga Province. Digby Wells Environmental has been appointed by Anglo American Platinum as the independent environmental consultant to compile the EMP for the prospecting right and facilitate the PPP. The application includes prospecting activities for Platinum Group Metals (PGMs) (palladium, rhodium, iridium, osmium and platinum) and associated minerals in the ore body (gold, copper, nickel, cobalt, silver and chrome) on the following farms:

Application number	Farms
<b>MP 30/5/1/1/2/11684 PR</b>	Remaining Extent, Portions 4 and 5, and the Remaining Extent of Portions 1, 2, 3 and 12 of the Farm Onverwacht 97 IS

## 3 PROSPECTING SCHEDULE

Prospecting activities will be undertaken over a period of five (5 years) and the application is for both invasive and non-invasive methods. Invasive methods are activities that result in land disturbances and comprise of diamond core drilling, sampling and sampling storage. Non-invasive methods are methods that do not cause disturbances to the land and include desktop research and include detailed geophysical surveys. It is anticipated that one (1) borehole will be drilled for each twelve (12) month period. Minerals that would be prospected for include PGMs (palladium, rhodium, iridium, osmium and platinum), gold, copper, nickel, cobalt, silver and chrome. Stakeholders affected by the proposed prospecting activities during the prospecting period will be consulted before any activities take place.

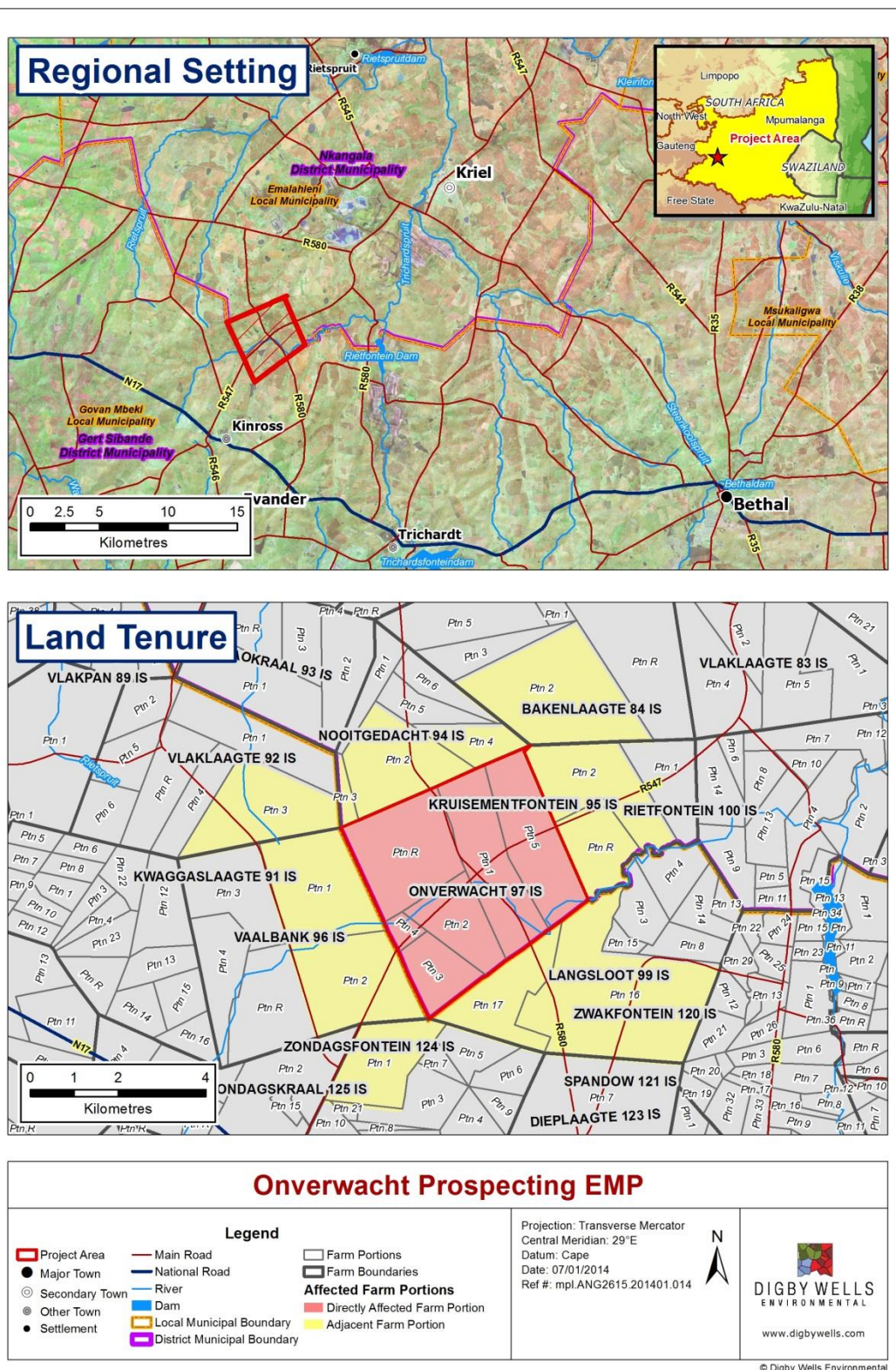
## BACKGROUND INFORMATION DOCUMENT

Application for Prospecting Rights on Farm Onvewacht

ANG2615



**DIGBY WELLS**  
ENVIRONMENTAL



**Plan 1: Regional Setting and Land Tenure of the Onvewacht PRA area**



## 4. PROSPECTING RIGHT APPLICATION PROCESS AND PUBLIC PARTICIPATION

### 4.1 Legislation

In terms of the MPRDA, RPM is required to consult with Interested and Affected Parties (I&APs). Comments received from I&APs will be recorded and included in the EMP which will be submitted to the DMR for consideration.

The EMP will be compiled and implemented to ensure that potential impacts of the proposed prospecting activities are mitigated and managed. It will contain results from desktop assessments that will be conducted by specialists for fauna and flora, heritage, social, hydrology (surface water), geohydrology (groundwater) and soil and land capability. According to the MPRDA, the EMP need to include the following activities but is not limited to:

- Describing the environment that is likely to be affected by the proposed prospecting;
- Identifying the potential impacts;
- Assessing the significance of the potential impacts of the proposed project on the environment, socio economic conditions and cultural heritage; and
- Evaluating the proposed mitigation measures to minimise negative impacts.

### 4.2 Public Participation

Stakeholders affected by or who are interested in the proposed project are invited to register as an I&AP in order to become involved in the PPP. The following anticipated dates are important to note for the PPP going forward:

- Announcement of the Onverwacht Prospecting Right Application: January 2014
- Stakeholder engagement and consultation: January 2014
- Submission of the Consultation Report : 13 January 2014
- Submission of the EMP: 12 February 2014

Contributions from stakeholders will assist in informed decision-making for authorities and provides information to be considered by the project team and specialists conducting research. All comments can be submitted using the contact details which appear on the cover page or as part of the Comment and Registration Sheet.