

# ANNEXURE 5 – HISTORIC IMAGERY

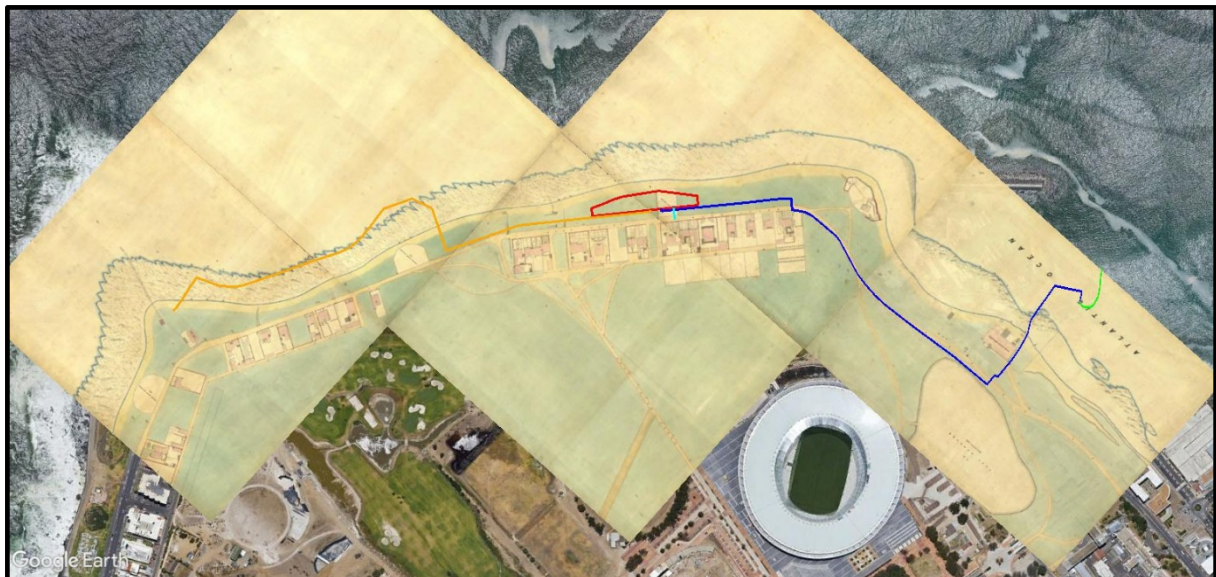
## 5.1. CONTEXT



**Figure 5.1.1 : Proposed infrastructure in context 2010.**

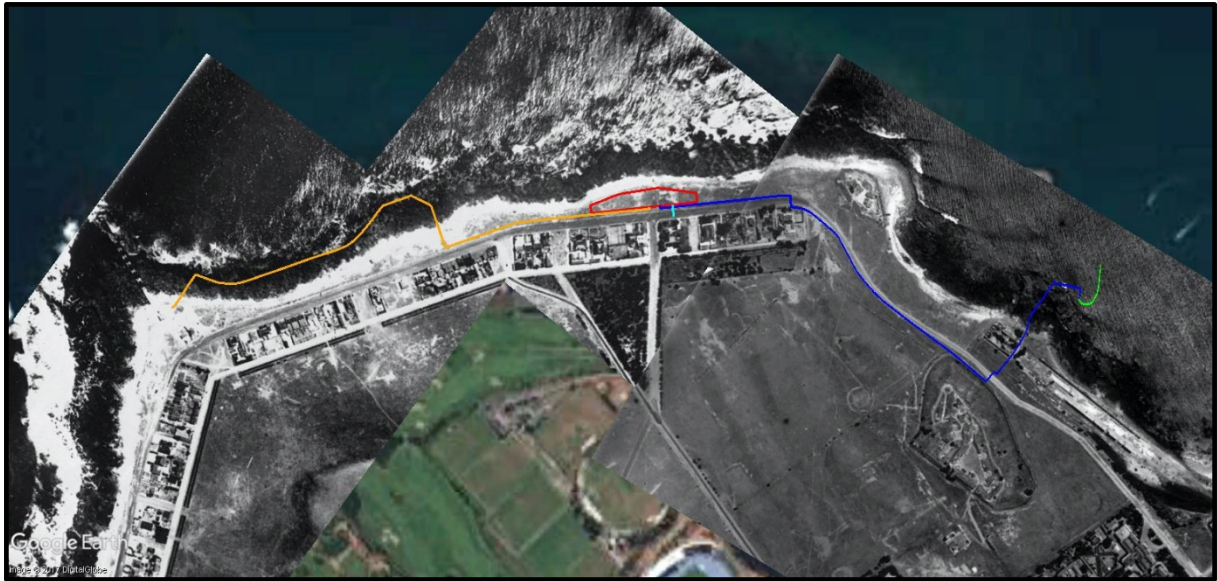
The **desalination plant site** is indicated in red outline; Orange indicates the **brine discharge pipeline**; Light Blue indicates the **treated water injection pipeline**; Dark Blue indicates the input **raw water pipeline**; and Green indicates the marine **abstraction pipeline**.

(Source: Google Earth 2010-08-01 imagery. Historic footprints mapped from 1892-1900 Thom Survey, sheets 116; 123; 124; 129; and 130).



**Figure 5.1.2: Proposed infrastructure in context around 1900.**

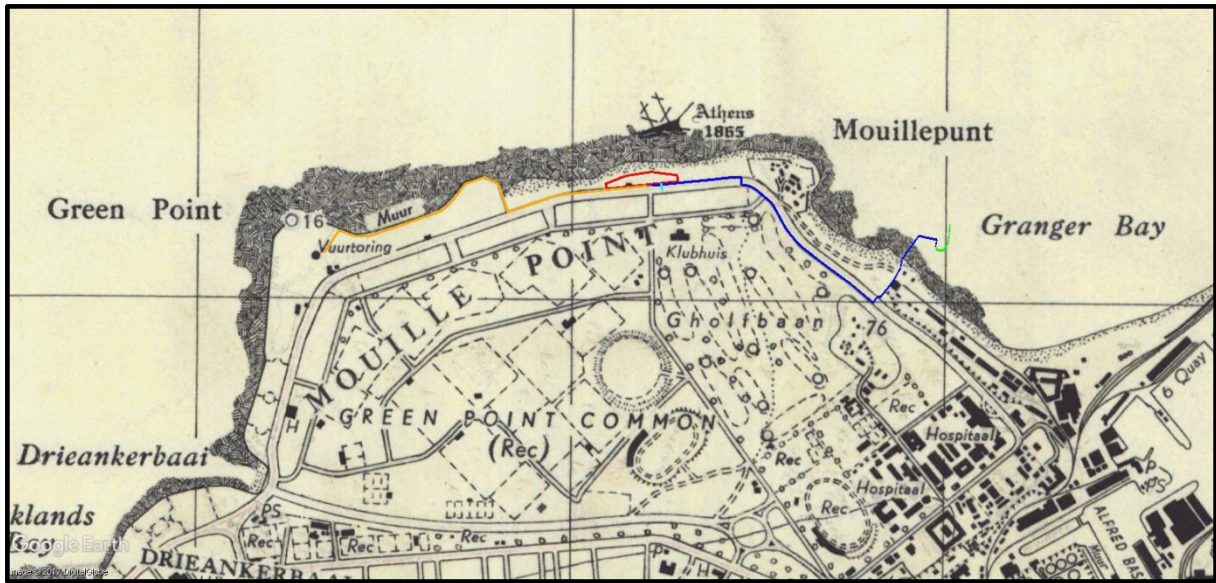
(Source: Walter Thom Survey, Sheets 116; 123; 124; 129; and 130).



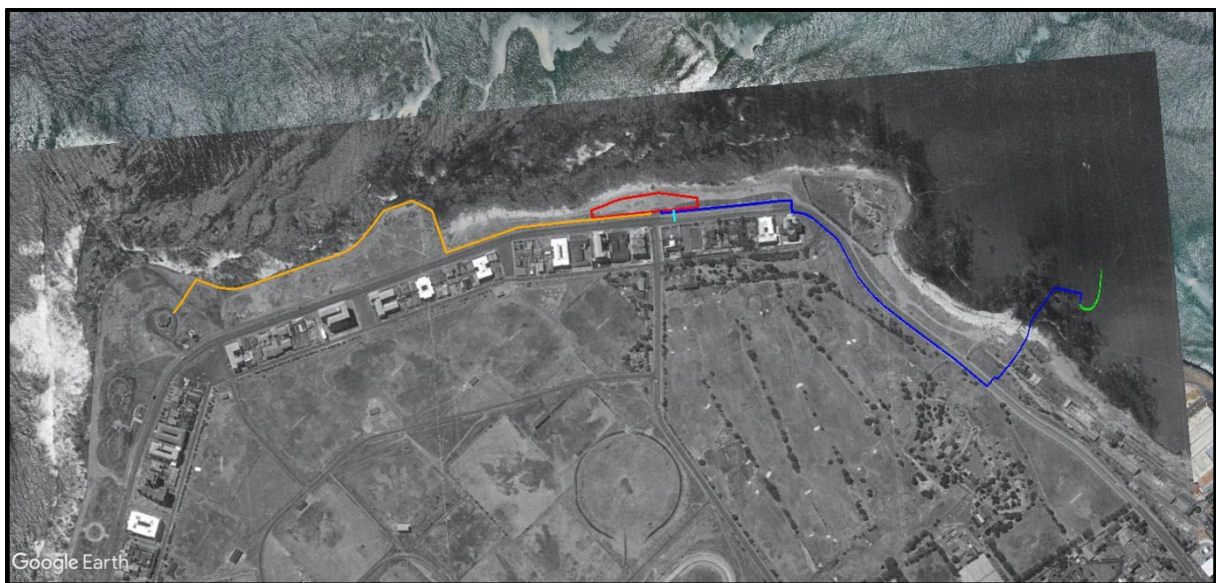
**Figure 5.1.3: Proposed infrastructure in context 1926.**  
(Source: Chief Directorate: National Geo-spatial Information 1926\_2\_831-2; 03\_0836).



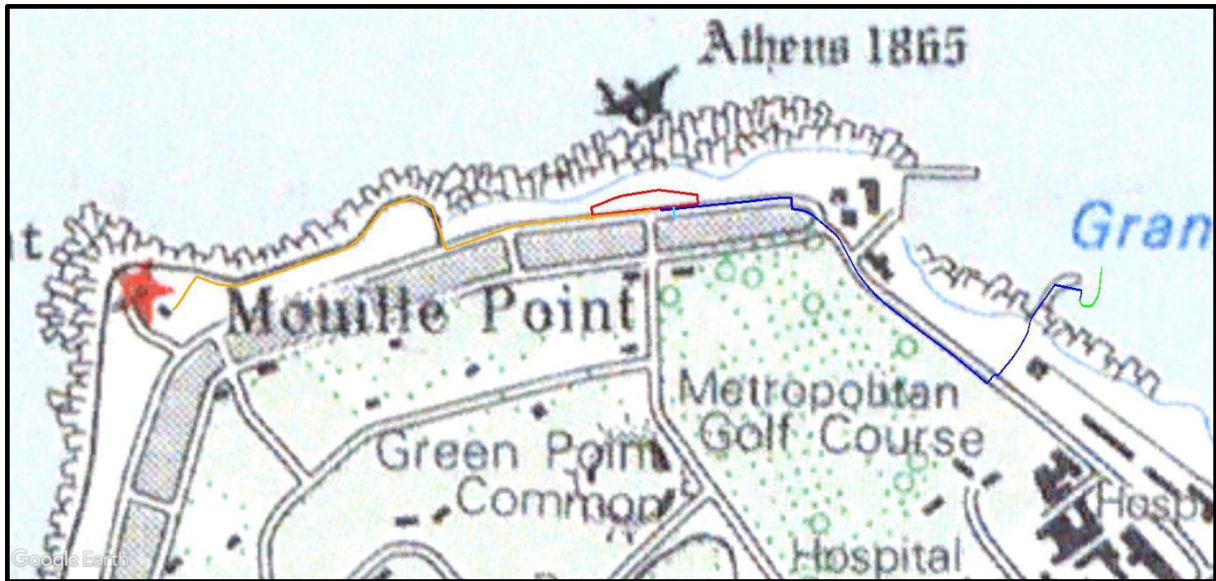
**Figure 5.1.4: Proposed infrastructure in context 1945.**  
(Source: Chief Directorate: National Geo-spatial Information 203A/45\_04\_0612; 614).



**Figure 1.5.5: Proposed infrastructure in context 1958.**  
 (Source: Chief Directorate National Geo-spatial Information. 3318-2777 TOPO 1:18 000).



**Figure 1.5.6: Proposed infrastructure in context 1960.**  
 (Source: Chief Directorate National Geo-spatial Information.454/60\_18\_7625).



**Figure 1.5.7: Proposed infrastructure in context 1980.**

(Source: Chief Directorate National Geo-spatial Information. Cape Town 3318CD 1: 50 000 Edition 5).



**Figure 1.5.8: Proposed infrastructure in context 1988.**

(Source: Chief Directorate National Geo-spatial Information. 919/88\_19\_9479).



**Figure 1.5.9: Proposed infrastructure in context 1996.**  
 (Source: Chief Directorate National Geo-spatial Information. 994/96\_3\_31).

## 5.2. TERMINAL PORTION OF BRINE DISCHARGE PIPELINE



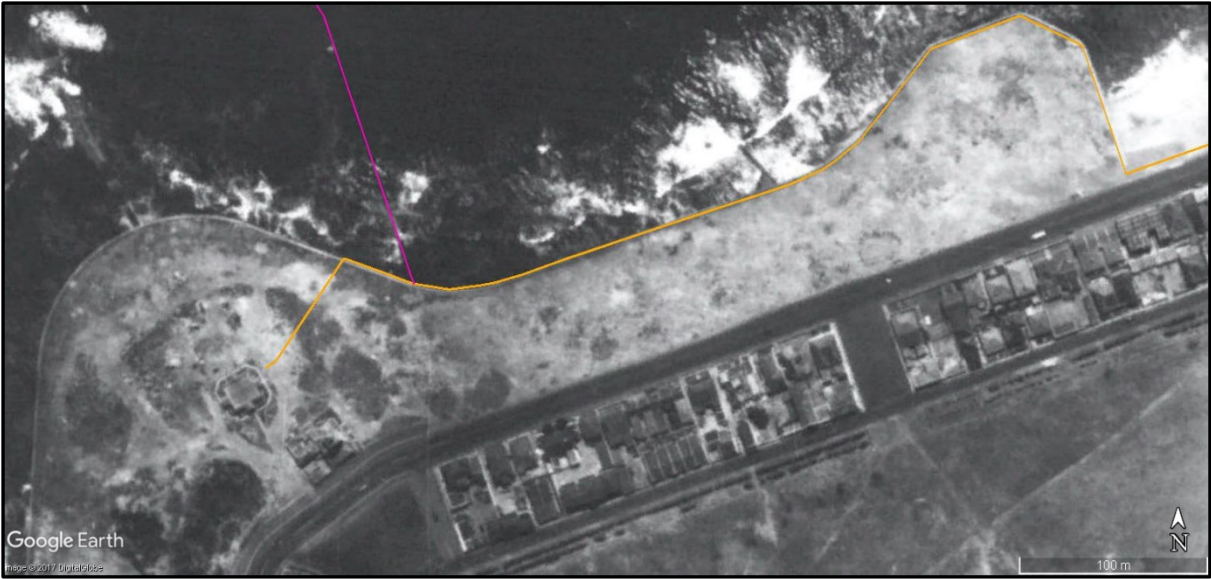
**Figure 5.2.1: Terminal portion of brine discharge pipeline (orange line) and existing outfall (pink line) in local context 2017.**  
 (Source: Google Earth 2017-08-26 imagery).



**Figure 5.2.2: Terminal portion of brine discharge pipeline (orange line) and existing outfall (pink line) in local context ca 1900.**  
(Source: Walter Thom Survey, Sheets 116; 123; and 124).



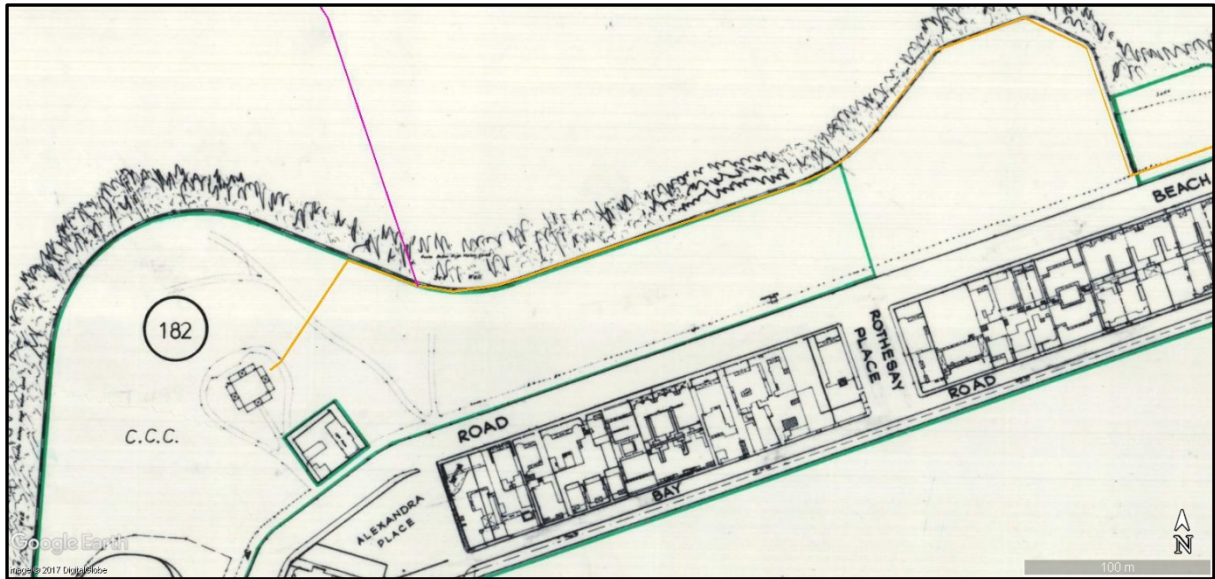
**Figure 5.2.3: Terminal portion of brine discharge pipeline (orange line) and existing outfall (pink line) in local context 1926.**  
(Source: Chief Directorate: National Geo-spatial Information 1926\_2\_831).



**Figure 5.2.4: Terminal portion of brine discharge pipeline (orange line) and existing outfall (pink line) in local context 1945.**  
(Source: Chief Directorate: National Geo-spatial Information 203A/45\_04\_0612).



**Figure 5.2.5: Terminal portion of brine discharge pipeline (orange line) and existing outfall (pink line) in local context 1960.**  
(Source: Chief Directorate National Geo-spatial Information.454/60\_18\_7625).



**Figure 5.2.6: Terminal portion of brine discharge pipeline (orange line) and existing outfall (pink line) in local context 1964.**

(Source: City of Cape Town Engineering Branch. Cape Town 1:2 400. Sheet WF-WC\_13-16).



**Figure 5.2.7: Terminal portion of brine discharge pipeline (orange line) and existing outfall (pink line) in local context 1988.**

(Source: Chief Directorate National Geo-spatial Information. 919/88\_19\_9479).





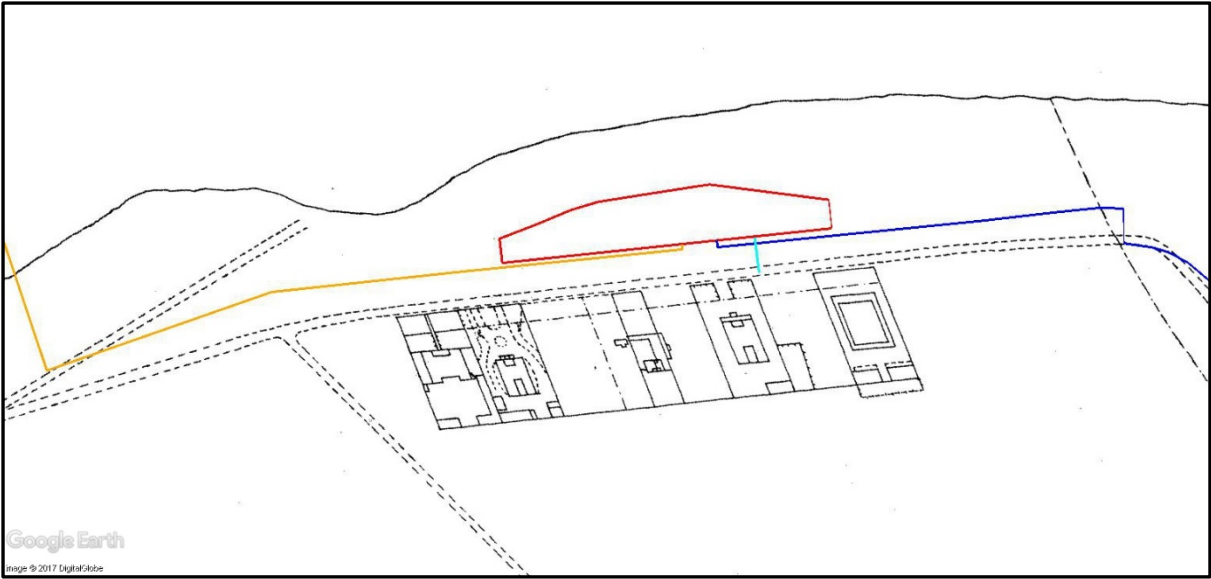
**Figure 5.2.8: Terminal portion of brine discharge pipeline (orange line) and existing outfall (pink line) in local context.**

(Source: Chief Directorate National Geo-spatial Information. 994/96\_3\_31).

### 5.3. PLANT SITE AND INCOMING AND OUTGOING PIPELINES



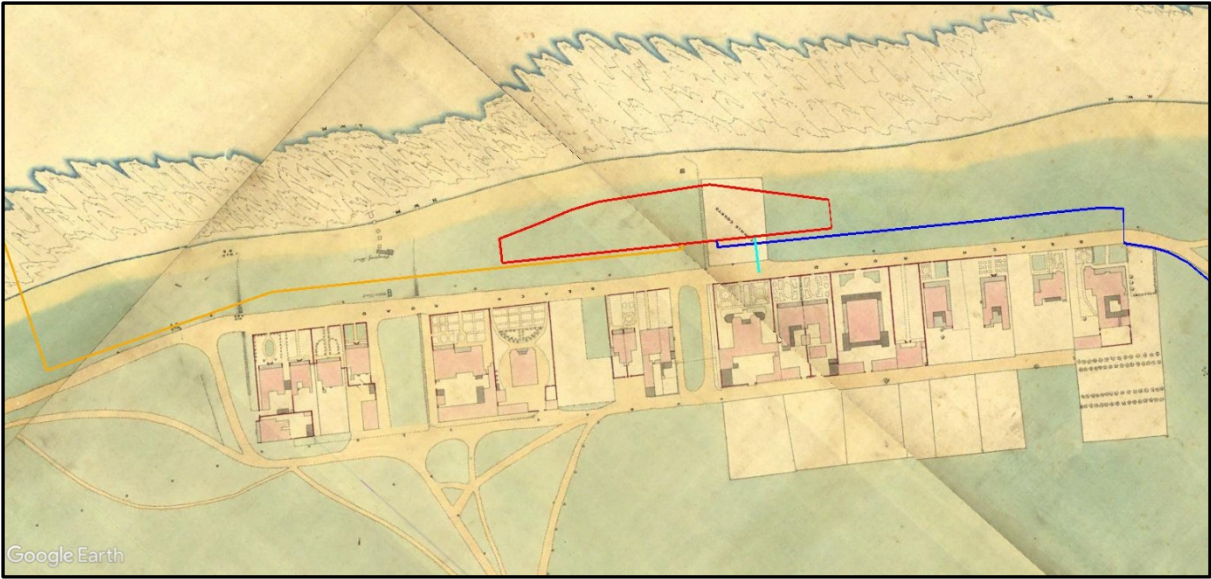
**Figure 5.3.1: Proposed site and incoming and outgoing pipelines in local context 2010**  
**Site** indicated in red outline; dark blue line indicates incoming **raw water** pipeline; light blue line indicates **treated water injection** pipeline; and orange line indicates **brine discharge** pipeline (Source: Google Earth 2010-08-01 imagery).



**Figure 5.3.2: Proposed site and incoming and outgoing pipelines in local context 1862**  
(Source: William Barclay Snow Survey Map).

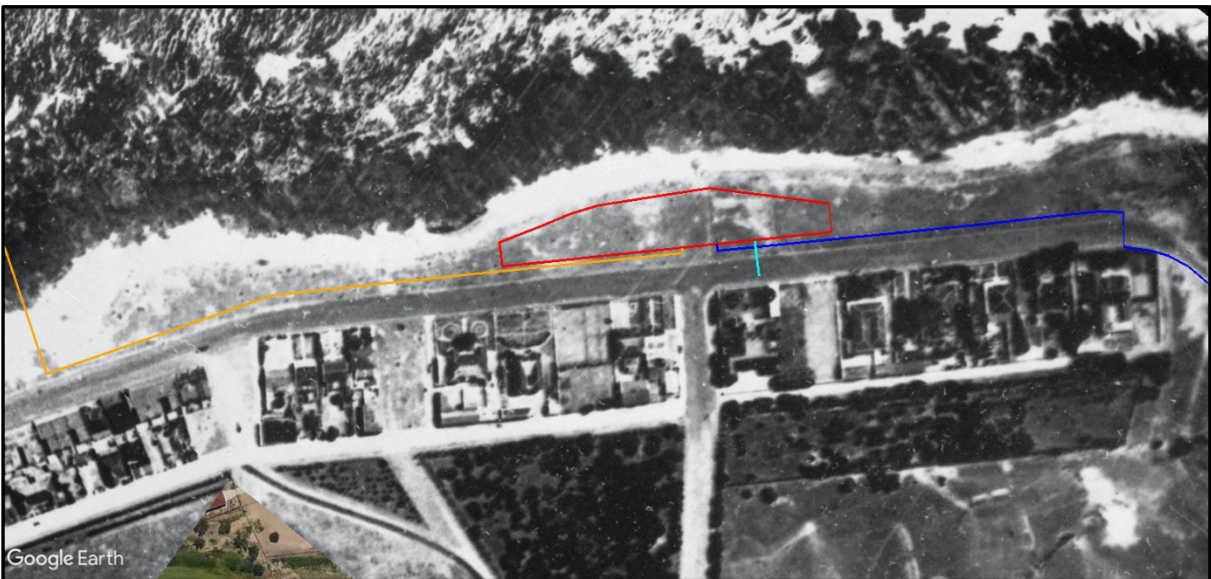


**Figure 5.3.3: Proposed site and incoming and outgoing pipelines in local context 1872**  
(Source: Alexander Wilson Survey Map).



**Figure 5.3.4: Proposed site and incoming and outgoing pipelines in local context ca 1900**

(Source: Walter Thom Survey, Sheets 123; 124 and 129).

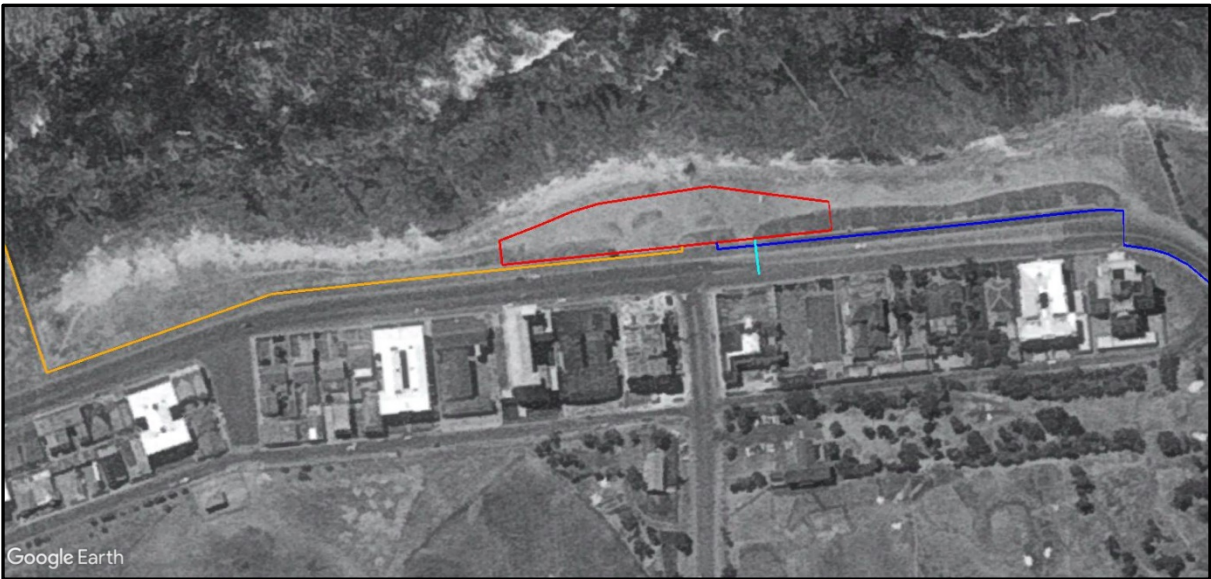


**Figure 5.3.5: Proposed site and incoming and outgoing pipelines in local context 1926**

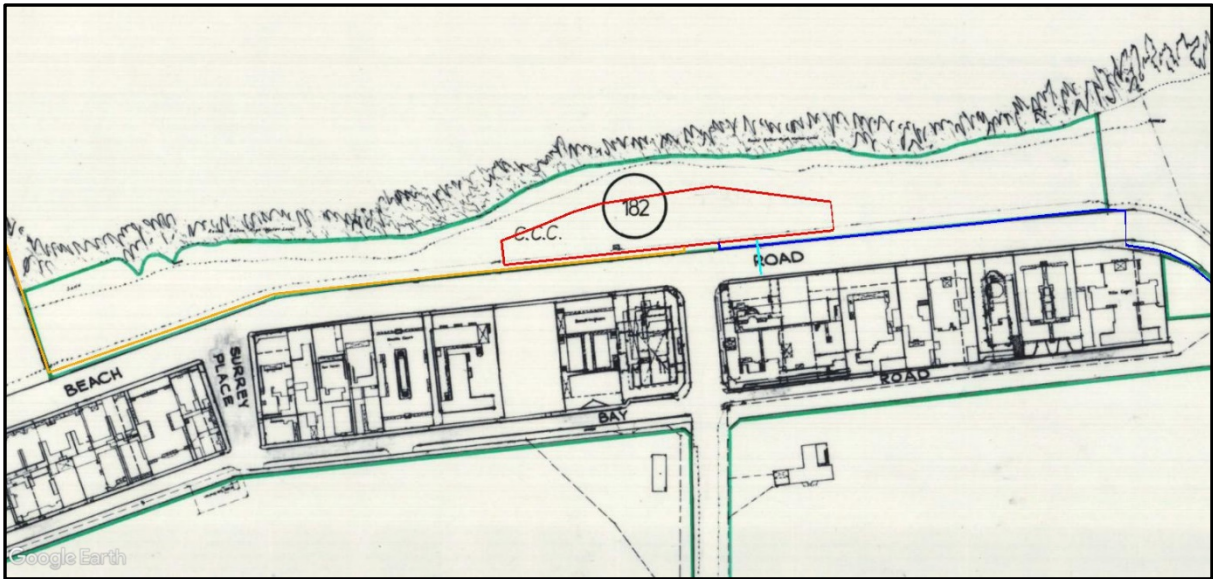
(Source: Chief Directorate: National Geo-spatial Information 1926\_2\_832).



**Figure 5.3.6: Proposed site and incoming and outgoing pipelines in local context 1945**  
(Source: Chief Directorate: National Geo-spatial Information 203A/45\_04\_0612; 0614).

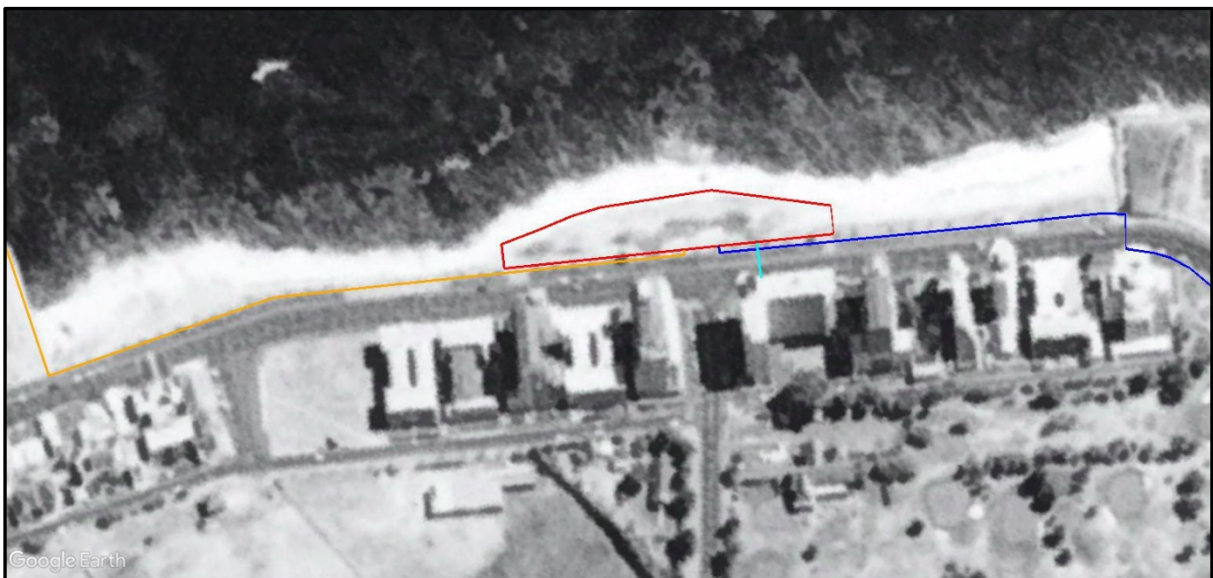


**Figure 5.3.7: Proposed site and incoming and outgoing pipelines in local context 1960**  
(Source: Chief Directorate National Geo-spatial Information.454/60\_18\_7625).



**Figure 5.3.8: Proposed site and incoming and outgoing pipelines in local context by 1964**

(Source: City of Cape Town Engineering Branch. Cape Town 1:2 400. Sheet WF-WC\_13-16).



**Figure 5.3.9: Proposed site and incoming and outgoing pipelines in local context 1988.**

(Source: Chief Directorate National Geo-spatial Information. 919/88\_19\_9479).



**Figure 5.3.10: Proposed site and incoming and outgoing pipelines in local context 1996.**

(Source: Chief Directorate National Geo-spatial Information. 994/96\_3\_31).

#### **5.4. TERMINAL PORTION OF RAW WATER PIPELINE AND MARINE ABSTRACTION**

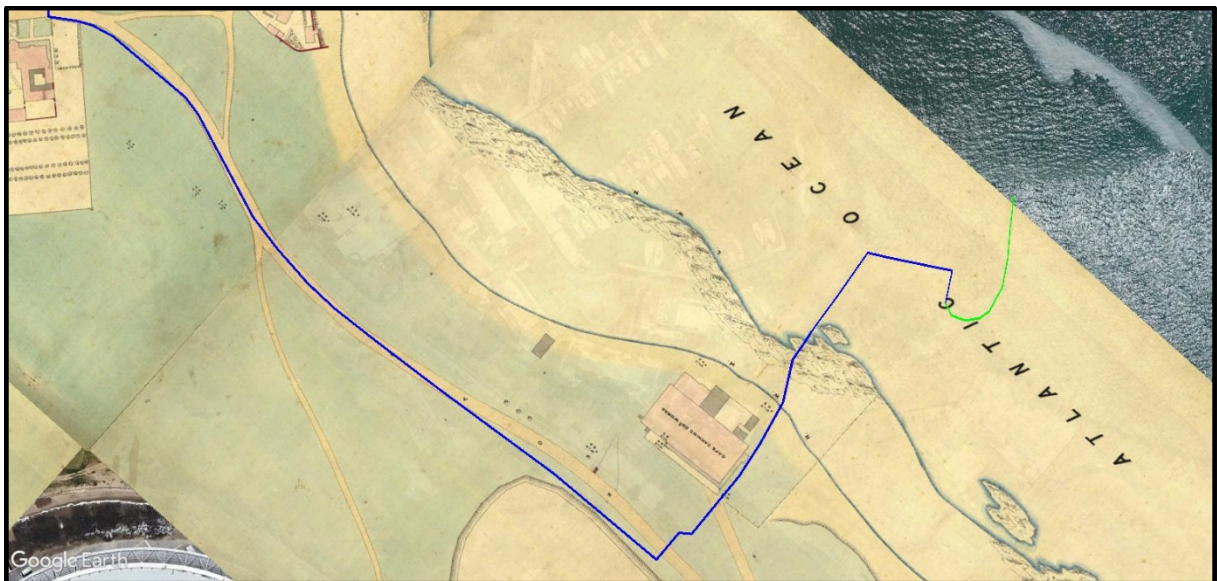


**Figure 5.4.1: Proposed raw water pipeline (dark blue line) and marine abstraction point (green line) 2010.**

(Source: Google Earth 2010-08-01 imagery).



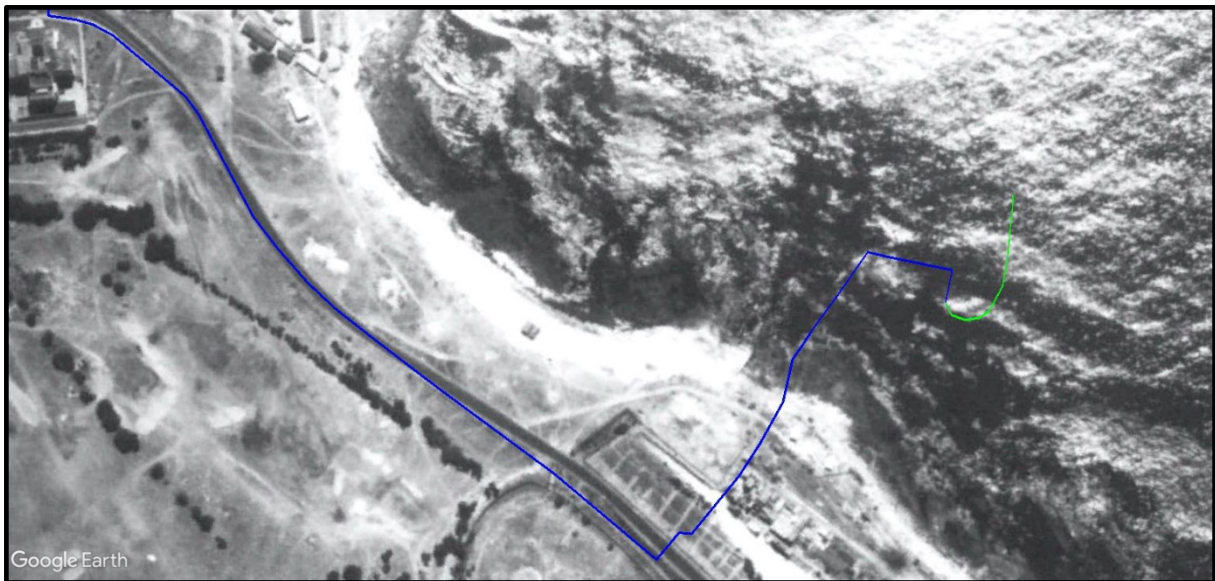
**Figure 5.4.2: Proposed raw water pipeline and marine abstraction point 1872.**  
(Source: Alexander Wilson Survey Map).



**Figure 5.4.3: Proposed raw water pipeline and marine abstraction point ca. 1900.**  
(Source: Walter Thom Survey, Sheets 124; 1929 and 130).

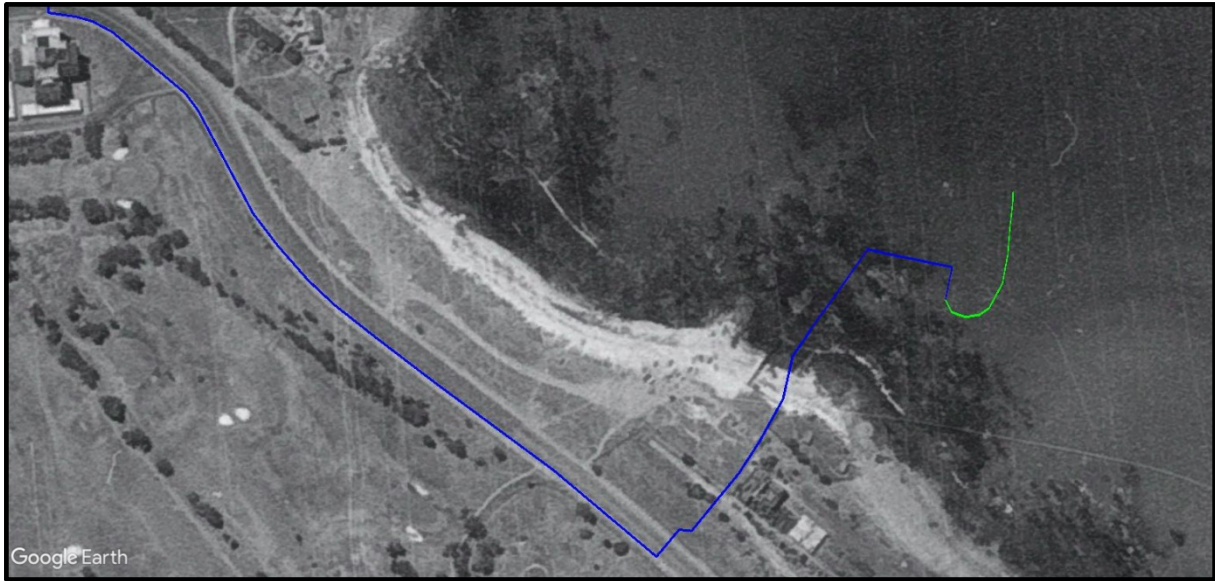


**Figure 5.4.4: Proposed raw water pipeline and marine abstraction point 1926.**  
(Source: Chief Directorate: National Geo-spatial Information 1926\_3\_836).

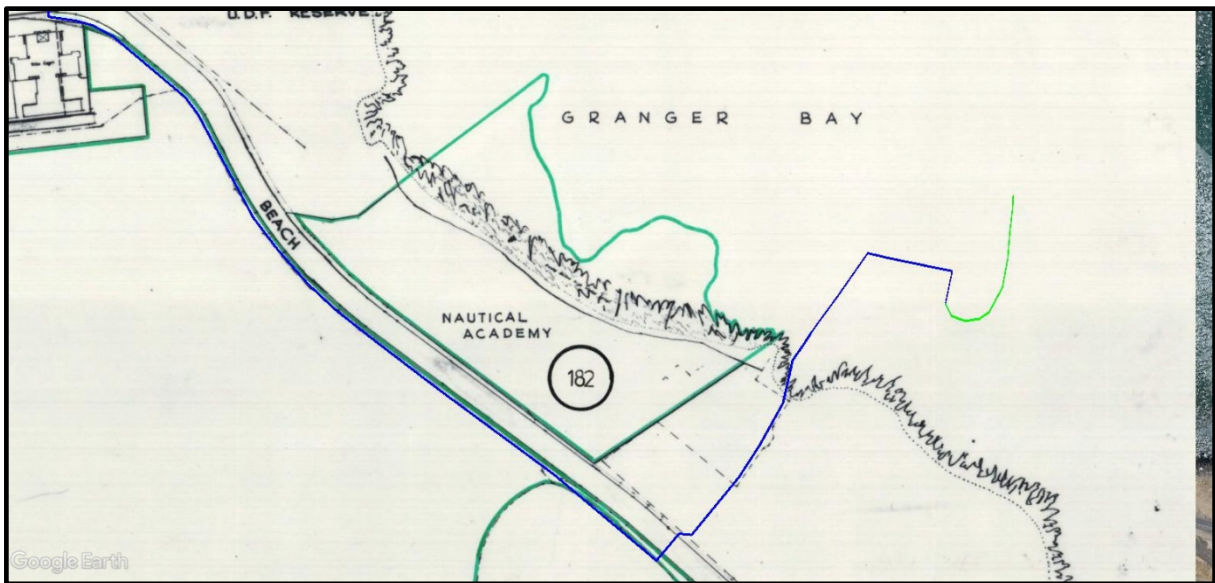


**Figure 5.4.5: Proposed raw water pipeline and marine abstraction point 1945.**  
(Source: Chief Directorate: National Geo-spatial Information 203A/45\_04\_0612; 0614).

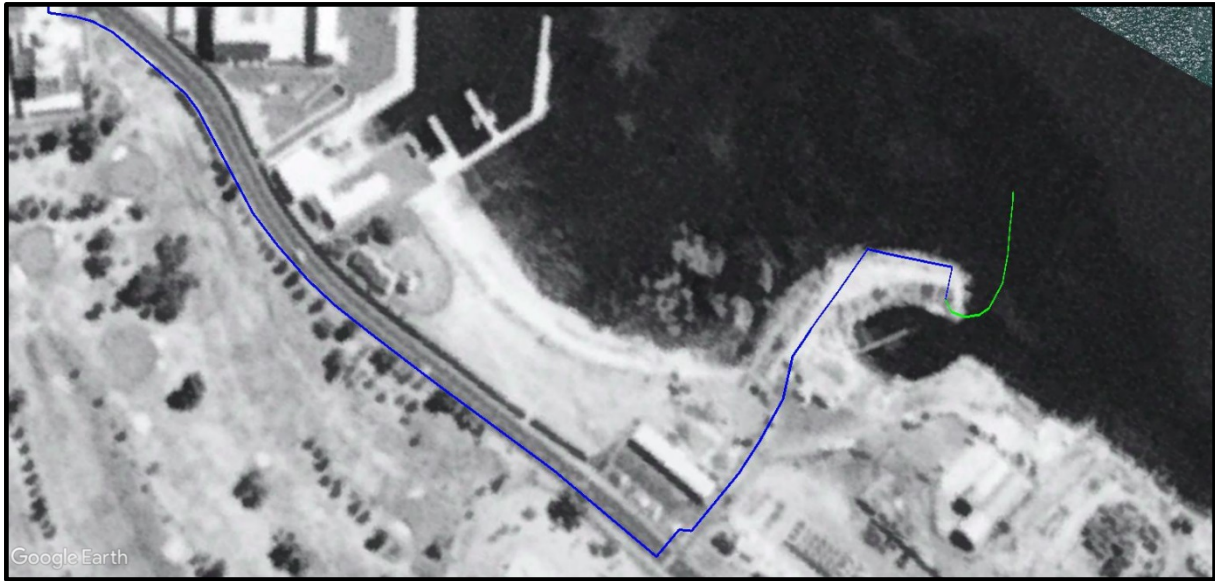




**Figure 5.4.6: Proposed raw water pipeline and marine abstraction point 1960.**  
(Source: Chief Directorate National Geo-spatial Information.454/60\_18\_7625).



**Figure 5.4.7: Proposed raw water pipeline and marine abstraction point 1964.**  
(Source: City of Cape Town Engineering Branch. Cape Town 1:2 400. Sheet WF-WC\_13-16).



**Figure 5.4.8: Proposed raw water pipeline and marine abstraction point 1988.**  
(Source: Chief Directorate National Geo-spatial Information. 919/88\_19\_9479).



**Figure 5.4.9: Proposed raw water pipeline and marine abstraction point 1996.**  
(Source: Chief Directorate National Geo-spatial Information. 994/96\_3\_31).