

ANNEXURE 5 – HISTORIC IMAGERY

5.1. CONTEXT

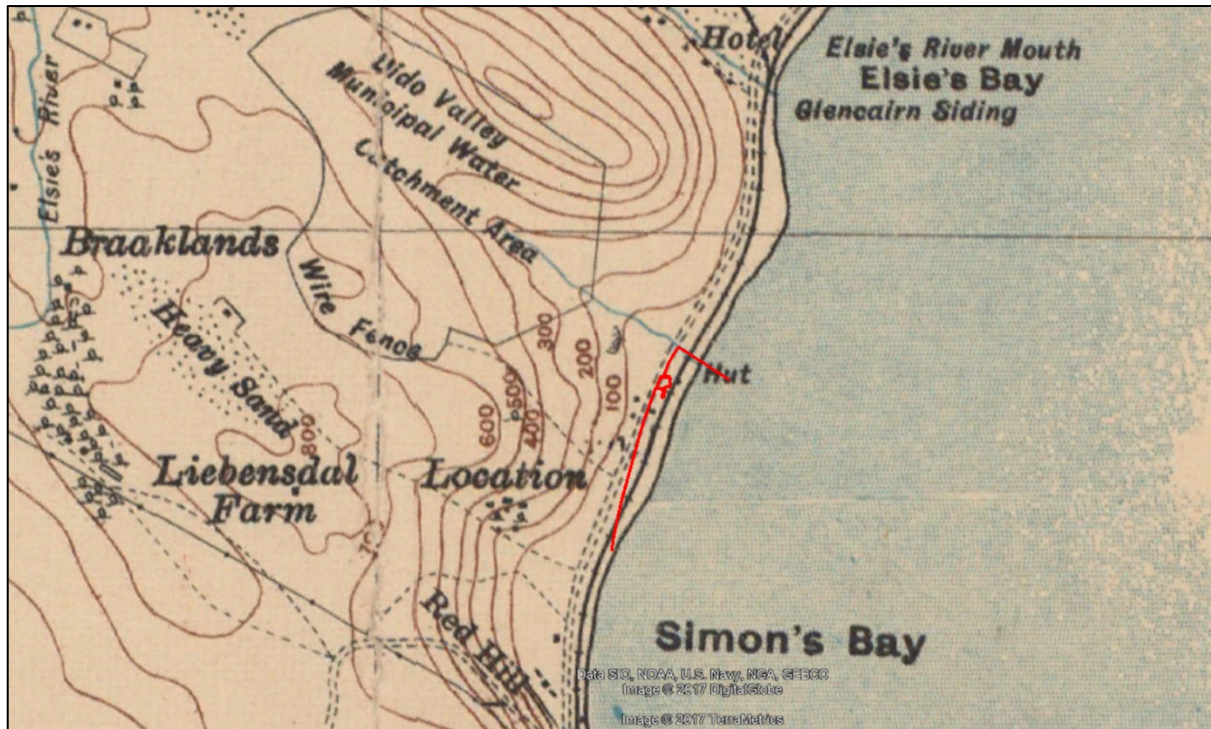


Figure 5.1.1: Dido Valley site and associated infrastructure (red lines) in context 1909 (not to scale).

(Source: The Cape Peninsula. Geographical Section, General Staff, No 2488. War Office, July 1909 (Chief Directorate National Geo-spatial Information)).



Figure 5.1.2: Dido Valley site and associated infrastructure (dark blue lines) in context 1932-9.

(Source: Chief Directorate National Geo-spatial Information. Cape Peninsula 1: 25 000. Sheet 3. Surveyed in 1932 and reprinted with minor revisions 1939).

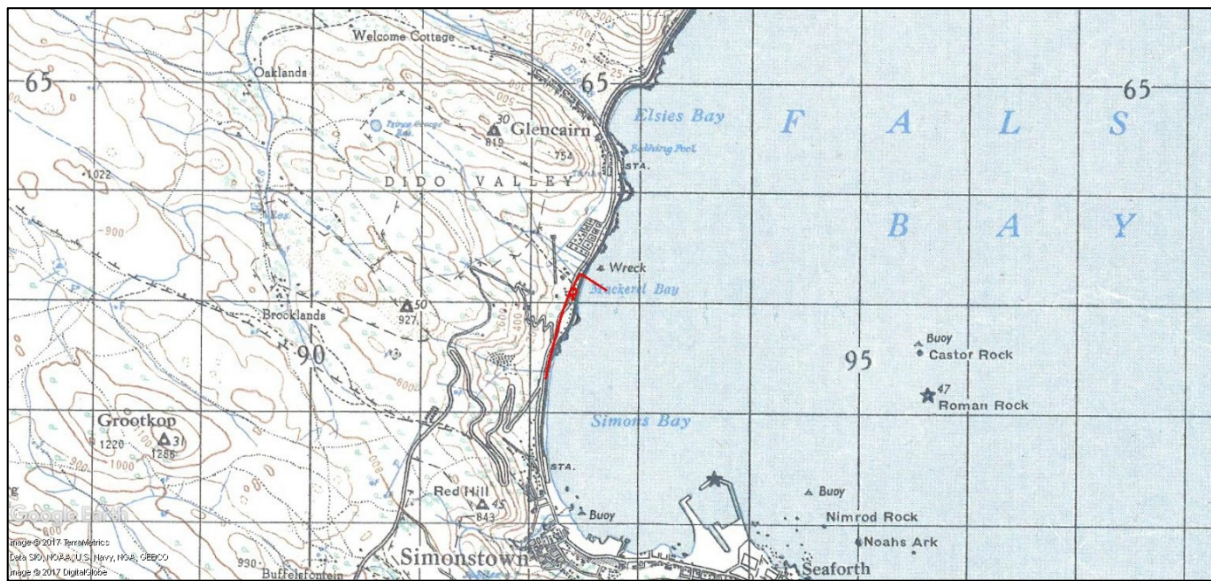


Figure 5.1.3: Dido Valley site and associated infrastructure (red lines) in context 1942.
(Source: Chief Directorate National Geo-spatial Information. Cape Peninsula 3418AB_AD 1: 50 000 Edition 1).



Figure 5.1.4: Dido Valley site and associated infrastructure (red lines) in context 1962.
(Source: Chief Directorate National Geo-spatial Information. Cape Peninsula 3418AB_AD 1: 50 000 Edition 2).



Figure 5.1.5: Dido Valley site and associated infrastructure (red lines) in context 1983.
 (Source: Chief Directorate National Geo-spatial Information. Cape Peninsula 3418AB_AD 1: 50 000 Edition 5).



Figure 5.1.6: Dido Valley site and associated infrastructure (red lines) in context 2000.
 (Source: Chief Directorate National Geo-spatial Information. Cape Peninsula 3418AB_AD 1: 50 000 Edition 7).



Figure 5.1.7: Dido Valley site and associated infrastructure (red lines) in context 2010.
(Source: Chief Directorate National Geo-spatial Information. Cape Peninsula 3418AB_AD 1: 50 000 Edition 8).

5.2. DESALINATION PLANT SITE



Figure 5.2.1: Dido Valley desalination plant site, incoming raw water pipeline, and outgoing treated water injection and brine discharge pipelines in local context 2017.
(Source: Google Earth, 2017-05-12).

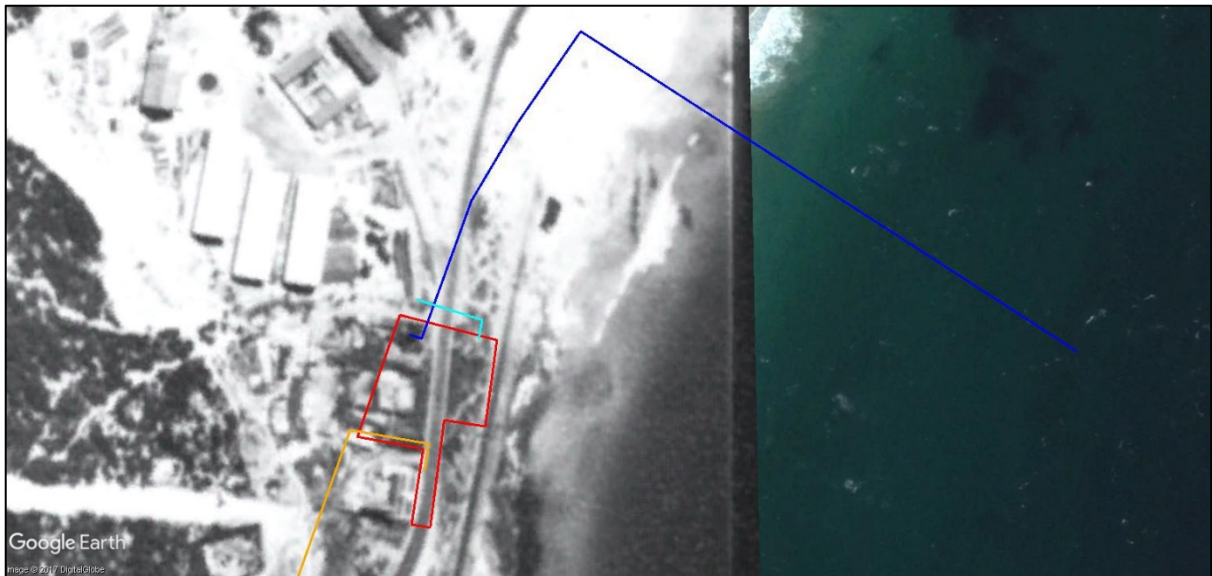


Figure 5.2.2: Dido Valley plant site and incoming and outgoing pipelines in local context 1945.

(Source: Chief Directorate National Geo-spatial Information. 203B/45_020_02190).

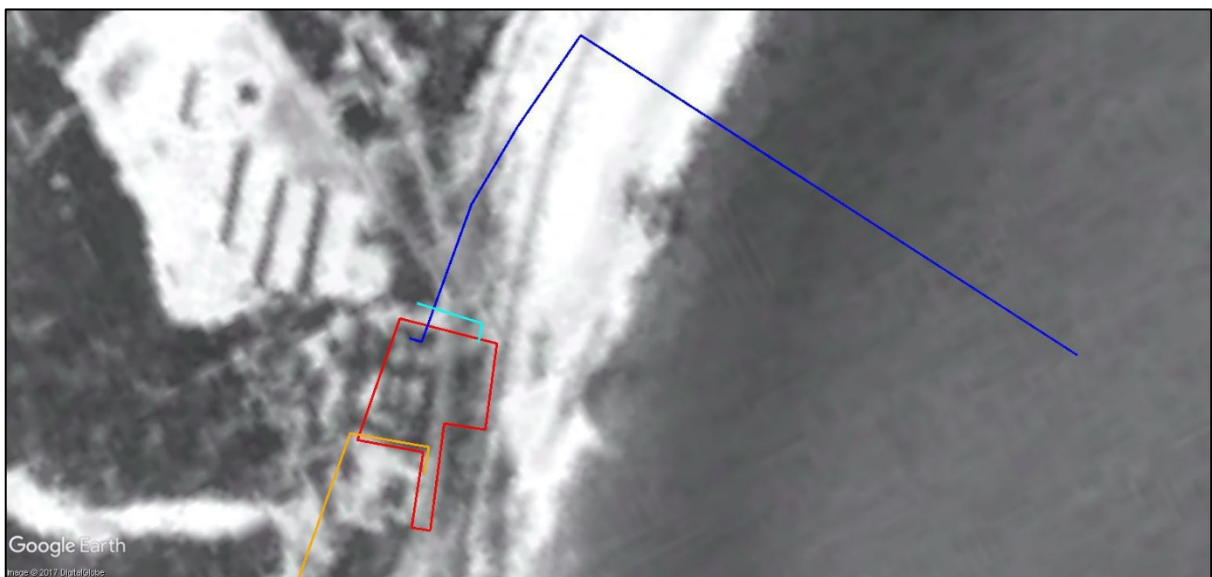


Figure 5.2.3: Dido Valley plant site and incoming and outgoing pipelines in local context 1958.

(Source: Chief Directorate National Geo-spatial Information. 424/58_009_06975).

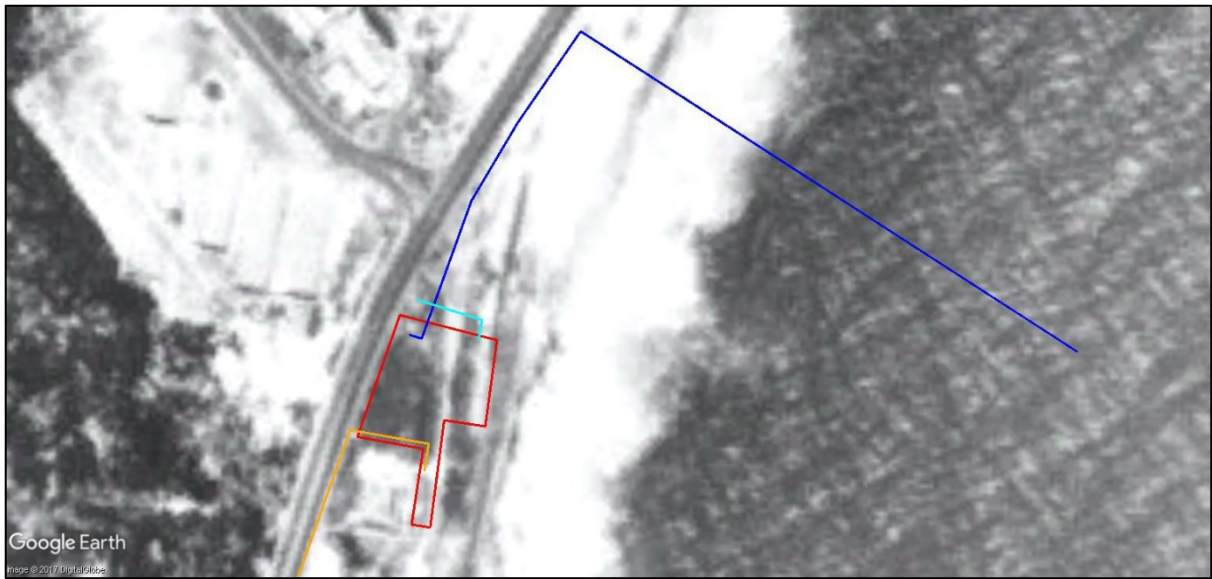


Figure 5.2.4: Dido Valley plant site and incoming and outgoing pipelines in local context 1968.

(Source: Chief Directorate National Geo-spatial Information. 424/58_009_06975).



Figure 5.2.5: Dido Valley plant site and incoming and outgoing pipelines in local context 1996.

(Source: Chief Directorate National Geo-spatial Information. 994/96_004_00009).

5.3. MID-PORTION OF BRINE DISCHARGE PIPELINE



Figure 5.3.1: Mid-portion of brine discharge pipeline (orange line) in local context 2017.
(Source: Google Earth, 2017-05-12).

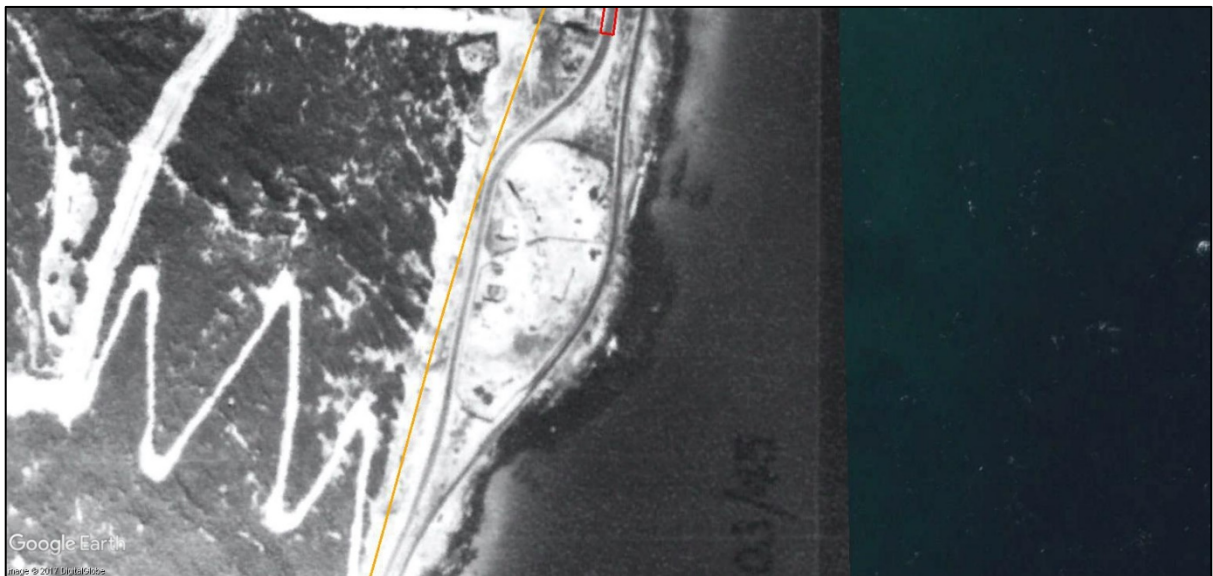


Figure 5.3.2: Mid-portion of brine discharge pipeline (orange line) in local context 1945.
(Source: Chief Directorate National Geo-spatial Information. 203B/45_021_02187).

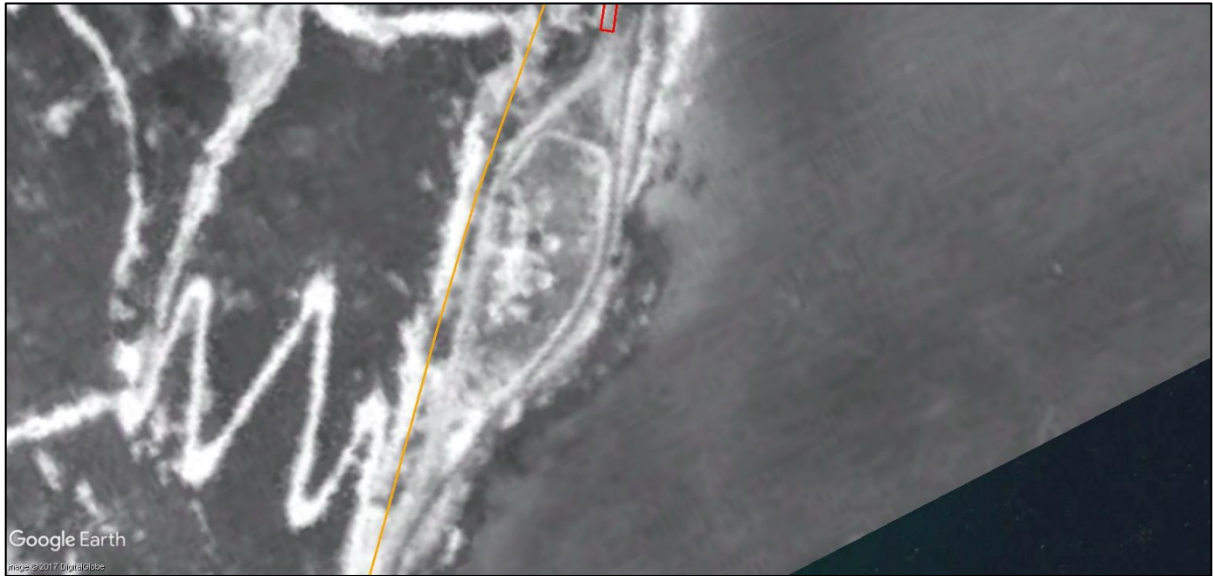


Figure 5.3.3: Mid-portion of brine discharge pipeline (orange line) in local context 1958.

(Source: Chief Directorate National Geo-spatial Information. 424/58_009_06975).

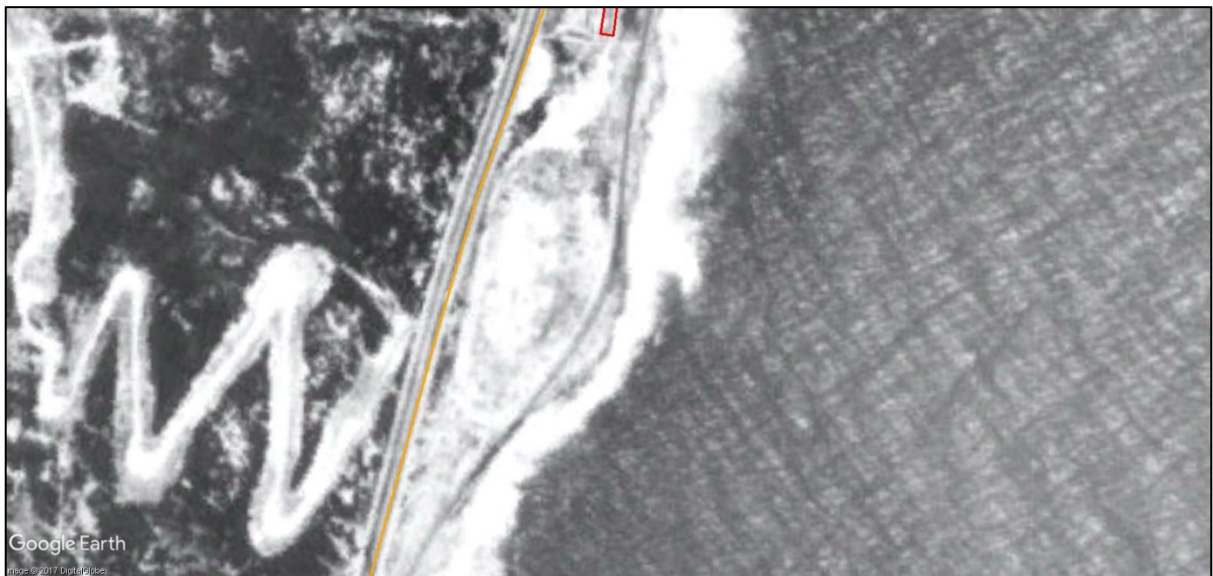


Figure 5.3.4: Mid-portion of brine discharge pipeline (orange line) in local context 1968.

(Source: Chief Directorate National Geo-spatial Information. 424/58_009_06975).

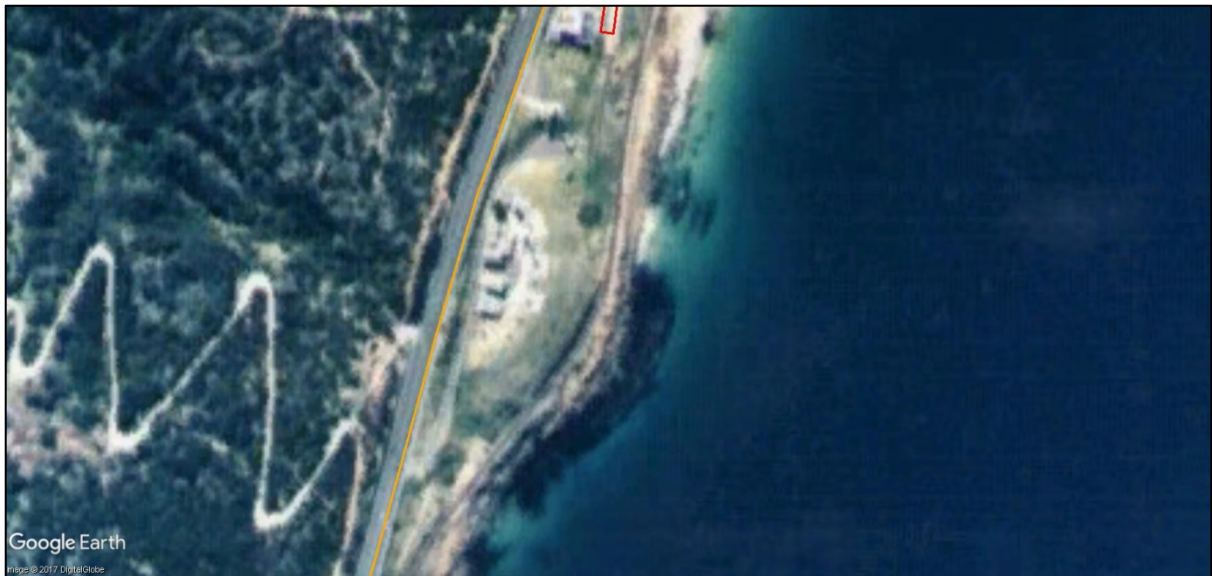


Figure 5.3.5: Mid-portion of brine discharge pipeline (orange line) in local context 1996.

(Source: Chief Directorate National Geo-spatial Information. 994/96_004_00009).

5.5. TERMINAL PORTION OF BRINE DISCHARGE PIPELINE



Figure 5.4.1: Terminal portion of brine discharge pipeline (orange line) in local context 2017.

(Source: Google Earth, 2017-05-12).

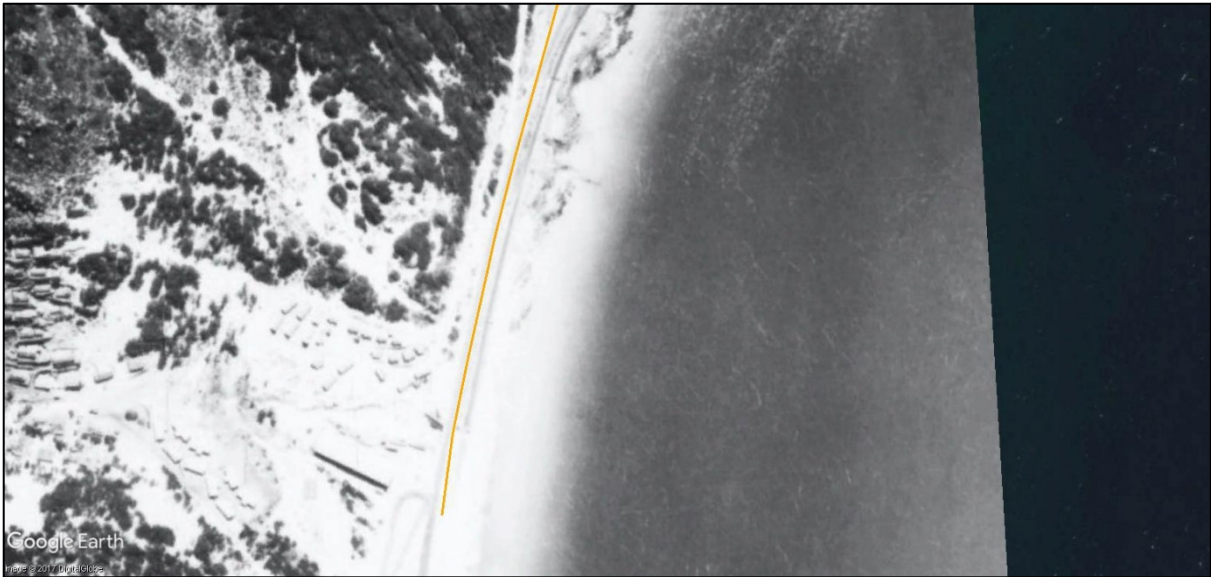


Figure 5.4.2: Terminal portion of brine discharge pipeline (orange line) in local context 1945.

(Source: Chief Directorate National Geo-spatial Information. 203B/45_021_02187).

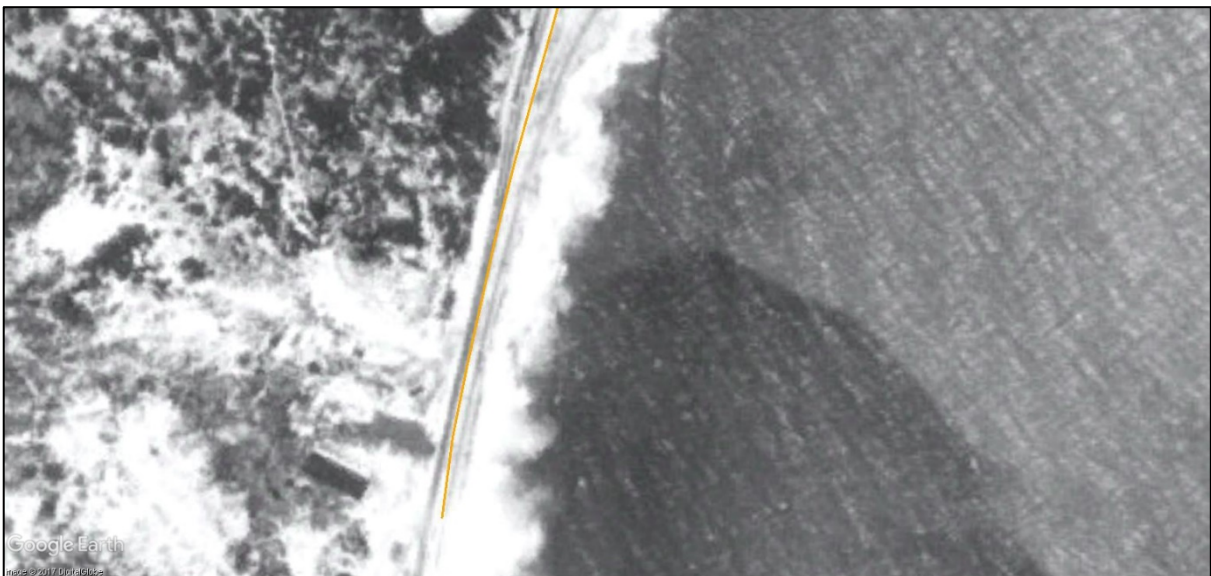


Figure 5.4.3: Terminal portion of brine discharge pipeline (orange line) in local context 1968.

(Source: Chief Directorate National Geo-spatial Information. 424/58_009_06975).



Figure 5.4.4: Terminal portion of brine discharge pipeline (orange line) in local context 1996.

(Source: Chief Directorate National Geo-spatial Information. 994/96_004_00009).



Figure 5.4.5: Terminal portion of brine discharge pipeline (orange line) in local context 2004.

(Source: Google Earth, 2004-03-25).