

ANNEXURE 5 – HISTORIC IMAGERY

5.1. CONTEXT



Figure 5.1.1: Hout Bay site and associated infrastructure (red lines) in context 1909 (not to scale).

(Source: The Cape Peninsula. Geographical Section, General Staff, No 2488. War Office, July 1909 (Chief Directorate National Geo-spatial Information)).



Figure 5.1.2: Hout Bay site and associated infrastructure (red lines) in context 1932-9.
(Source: Chief Directorate National Geo-spatial Information. Cape Peninsula 1: 25 000. Sheet 2. Surveyed in 1932, photo-lithographed 1934, and reprinted with minor revisions 1939).

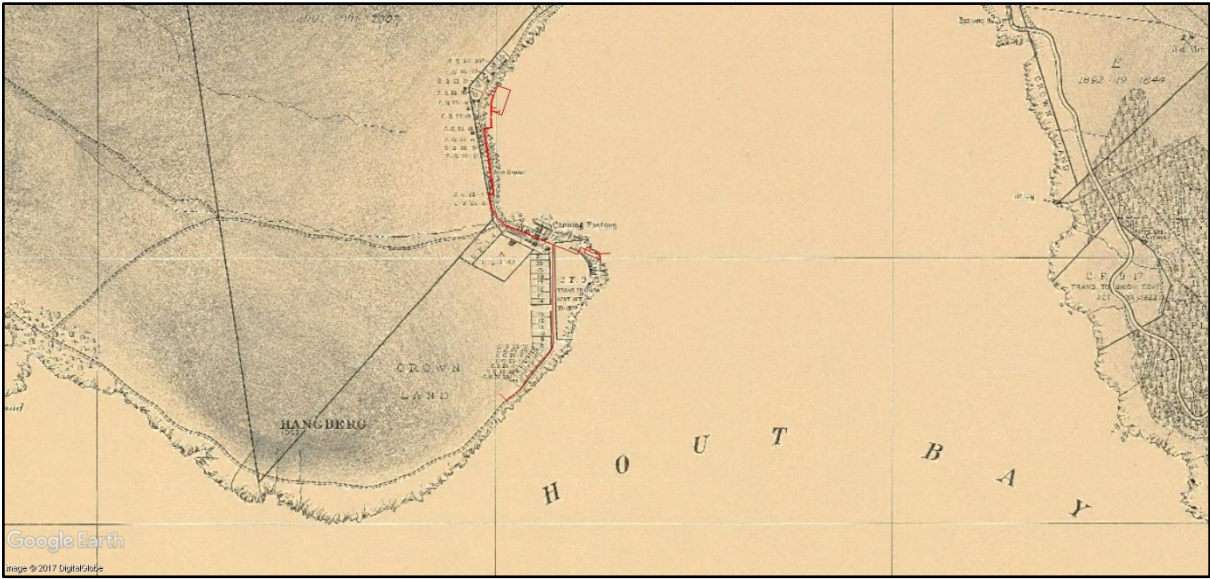


Figure 5.1.3 Hout Bay site and associated infrastructure (dark blue lines) in context 1933.

(Source: Chief Directorate National Geo-spatial Information. Cape Town 1: 7445. Sheet 12A).

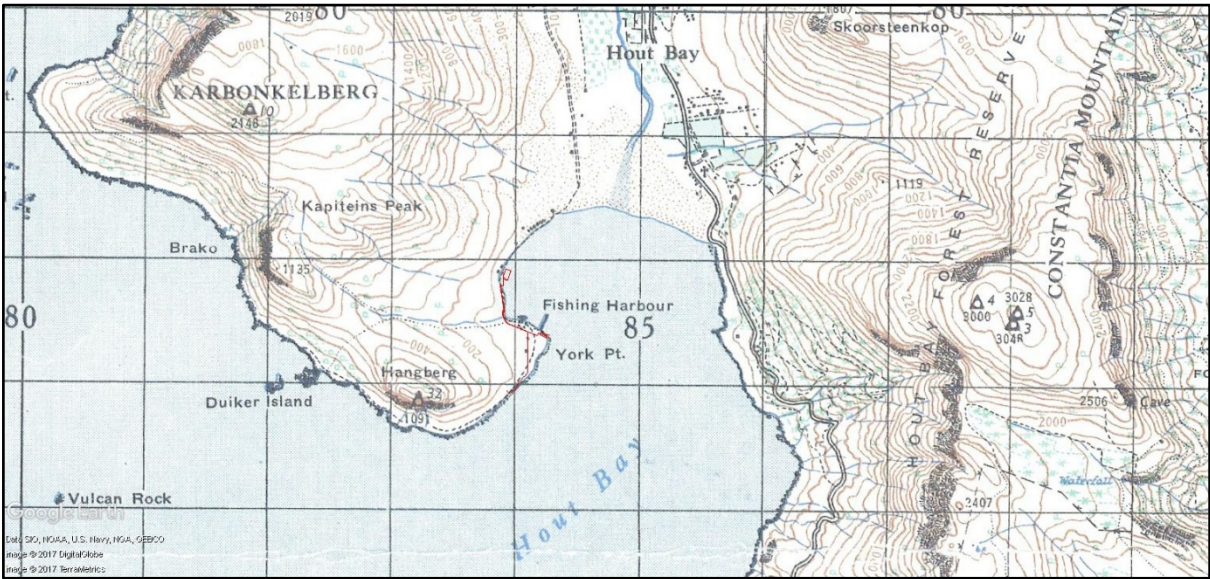


Figure 5.1.4: Hout Bay site and associated infrastructure (red lines) in context 1942.

(Source: Chief Directorate National Geo-spatial Information. Cape Peninsula 3418AB_AD 1: 50 000 Edition 1).



Figure 5.1.5: Hout Bay site and associated infrastructure (red lines) in context 1962.
 (Source: Chief Directorate National Geo-spatial Information. Cape Peninsula 3418AB_AD 1: 50 000 Edition 2).



Figure 5.1.6: Hout Bay site and associated infrastructure (red lines) in context 1983.
 (Source: Chief Directorate National Geo-spatial Information. Cape Peninsula 3418AB_AD 1: 50 000 Edition 5).

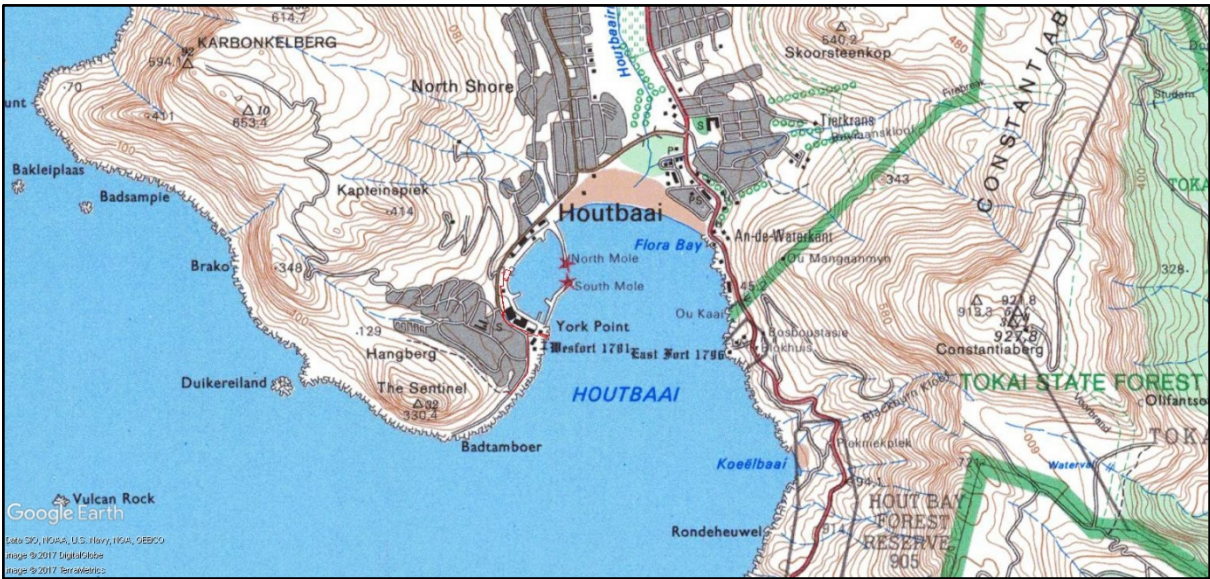


Figure 5.1.7: Hout Bay site and associated infrastructure (red lines) in context 1992.
 (Source: Chief Directorate National Geo-spatial Information. Cape Peninsula 3418AB_AD 1: 50 000 Edition 6).

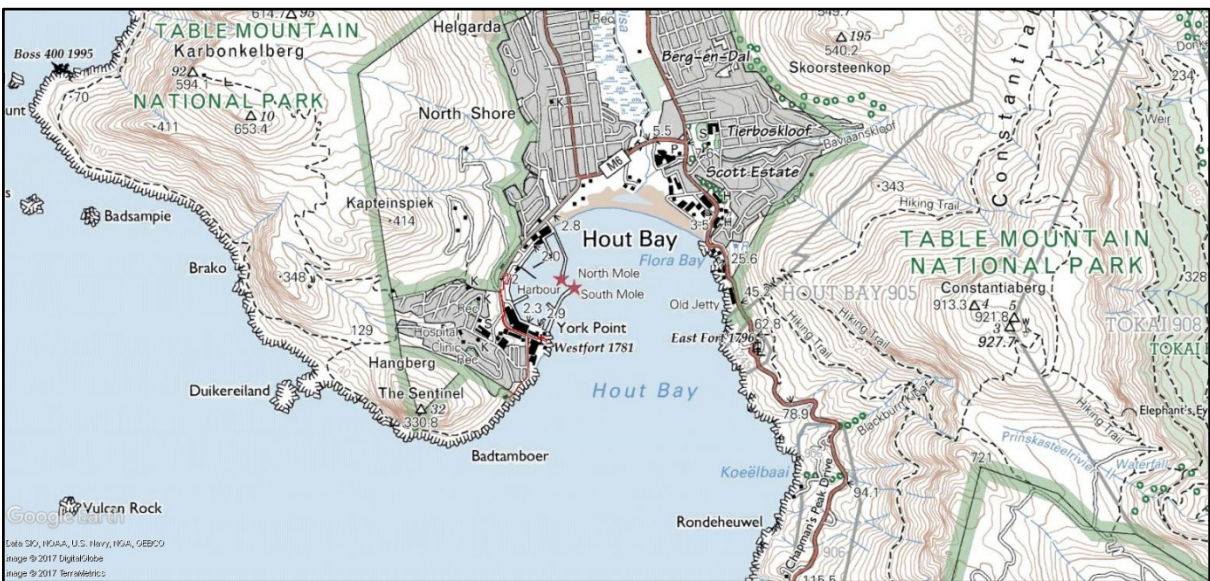


Figure 5.1.8: Hout Bay site and associated infrastructure (red lines) in context 2010.
 (Source: Chief Directorate National Geo-spatial Information. Cape Peninsula 3418AB_AD 1: 50 000 Edition 8).

5.2. DESALINATION PLANT SITE



Figure 5.2.1: Hout Bay **desalination plant** site, incoming **raw water** pipeline, and outgoing **treated water injection** and **brine discharge** pipelines in local context 2017. (Source: Google Earth, 2017-05-12).

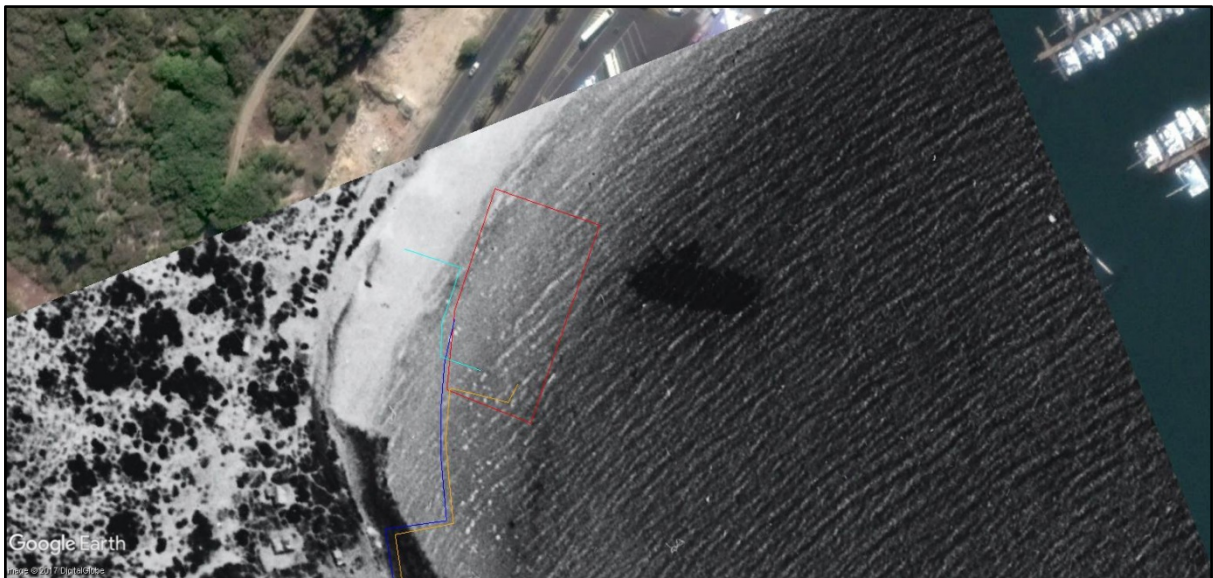


Figure 5.2.2. Hout Bay **desalination plant** site, incoming **raw water** pipeline, and outgoing **treated water injection** and **brine discharge** pipelines in local context 1926. (Source: Chief Directorate National Geo-spatial Information. 1926_33_1267).

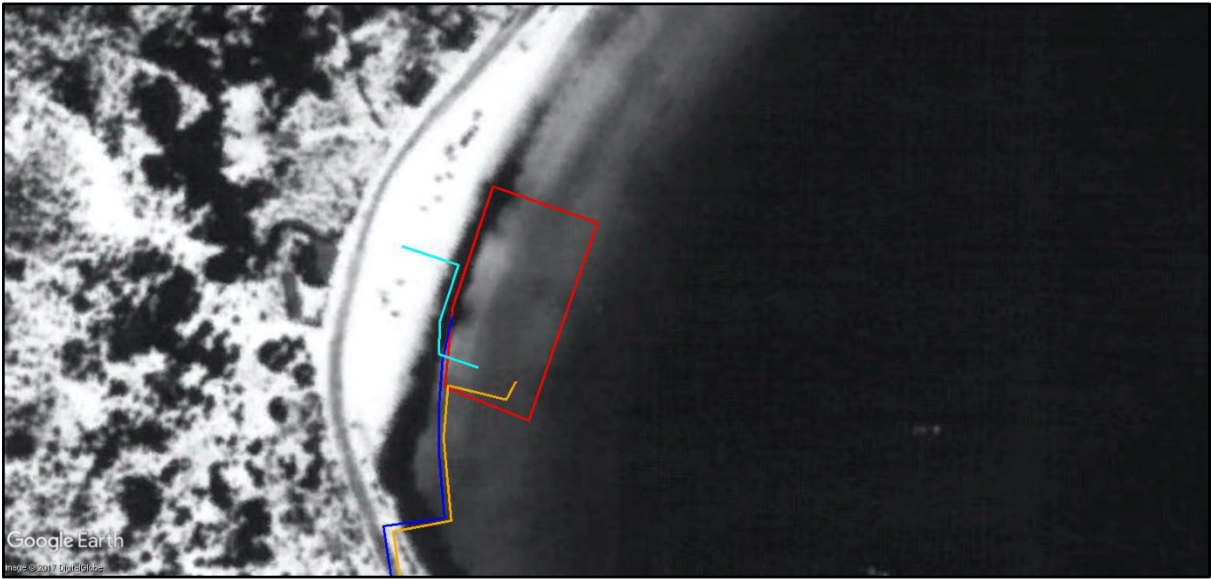


Figure 5.2.3: Hout Bay **desalination plant** site, incoming **raw water** pipeline, and outgoing **treated water injection** and **brine discharge** pipelines in local context 1945. (Source: Chief Directorate National Geo-spatial Information. 61/44_2_317).

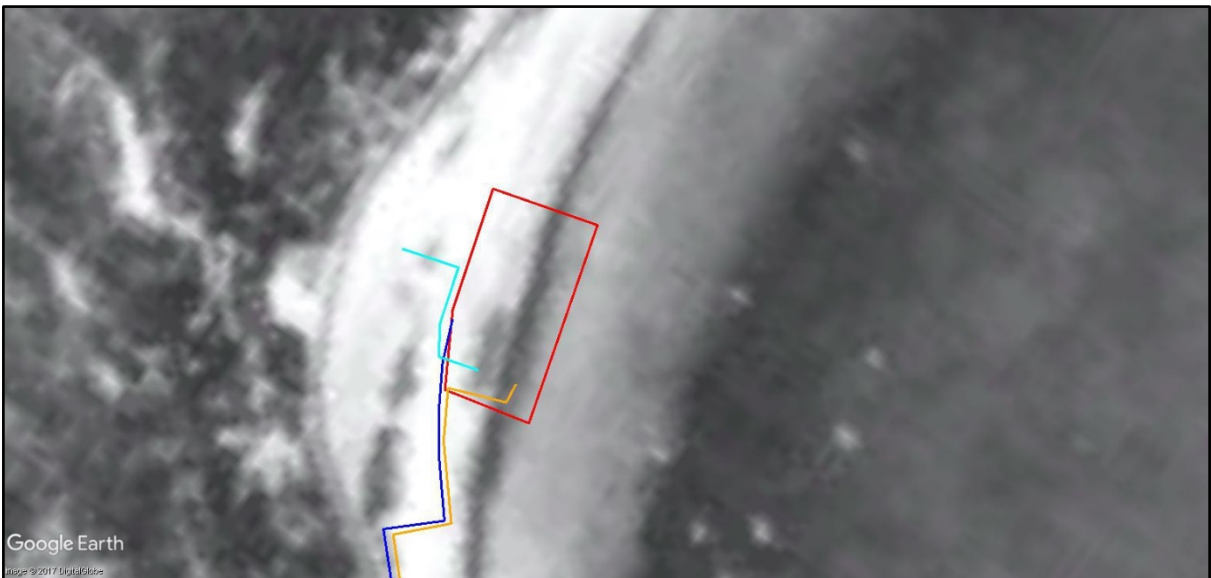


Figure 5.2.4: Hout Bay **desalination plant** site, incoming **raw water** pipeline, and outgoing **treated water injection** and **brine discharge** pipelines in local context 1958. (Source: Chief Directorate National Geo-spatial Information. 424/58_001_07045).



Figure 5.2.5: Hout Bay **desalination plant** site, incoming **raw water** pipeline, and outgoing **treated water injection** and **brine discharge** pipelines in local context 1968. (Source: Chief Directorate National Geo-spatial Information. 620/68_2_265).



Figure 5.2.6: Hout Bay **desalination plant** site, incoming **raw water** pipeline, and outgoing **treated water injection** and **brine discharge** pipelines in local context 1996. (Source: Chief Directorate National Geo-spatial Information. 994/96_01N_00001).



Figure 5.2.7: Hout Bay **desalination plant** site, incoming **raw water** pipeline, and outgoing **treated water injection** and **brine discharge** pipelines in local context 2001. (Source: Google Earth, 2001-09-14).

5.3. MARNE ABSTRACTION, RAW WATER PIPELINE AND INITIAL PORTION OF BRINE DISCHARGE PIPELINE



Figure 5.3.1: **Raw water** pipeline (including marine abstraction), **raw water pump station** site, and portion of **brine discharge** pipeline in local context 2017. (Source: Google Earth, 2017-05-12).

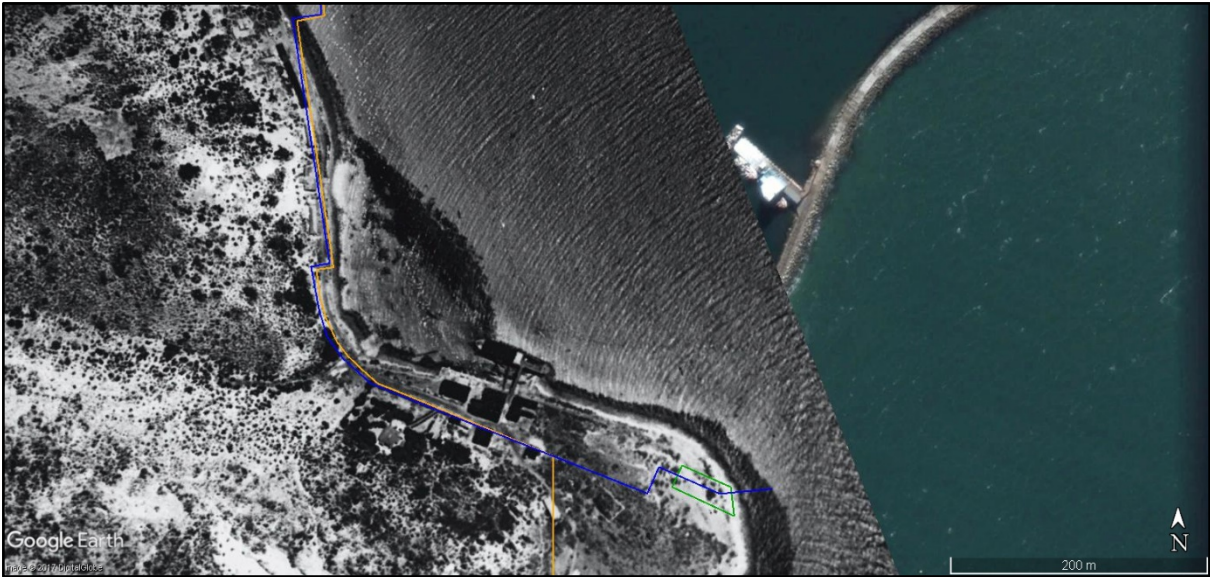


Figure 5.3.2: Raw water pipeline (including marine abstraction), raw water pump station site, and portion of brine discharge pipeline in local context 1926.
 (Source: Chief Directorate National Geo-spatial Information. 1926_33_1267).

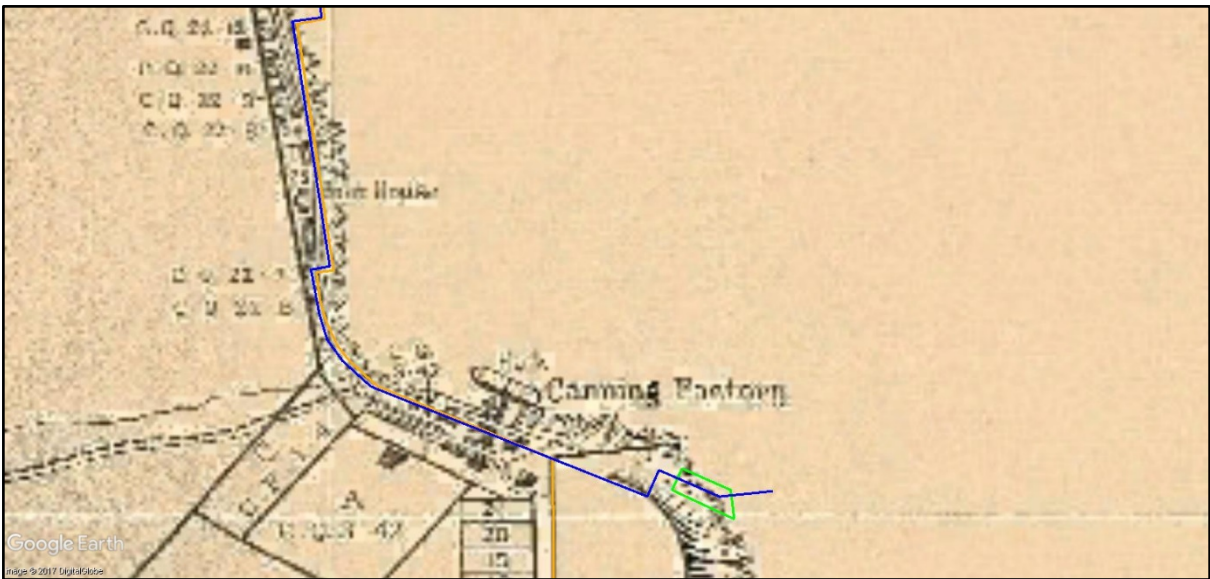


Figure 5.3.3: Raw water pipeline (including marine abstraction), raw water pump station site, and portion of brine discharge pipeline in local context 1933.
 (Source: Chief Directorate National Geo-spatial Information. Cape Town 1: 7445. Sheet 12A).

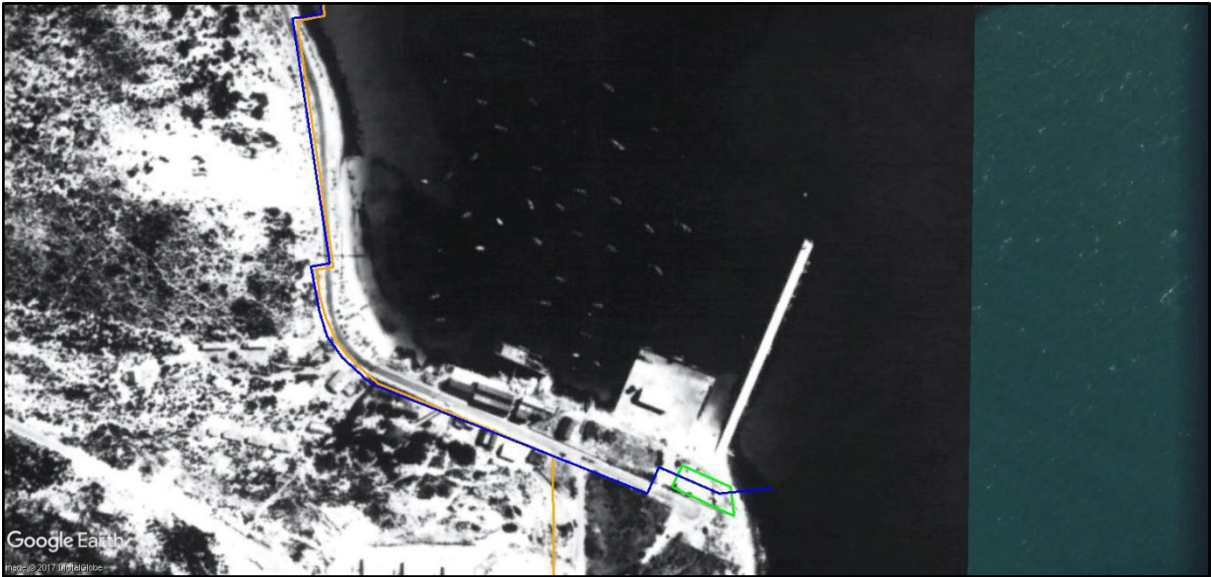


Figure 5.3.4: Raw water pipeline (including marine abstraction), raw water pump station site, and portion of brine discharge pipeline in local context 1945.
(Source: Chief Directorate National Geo-spatial Information. 61/44_2_317).

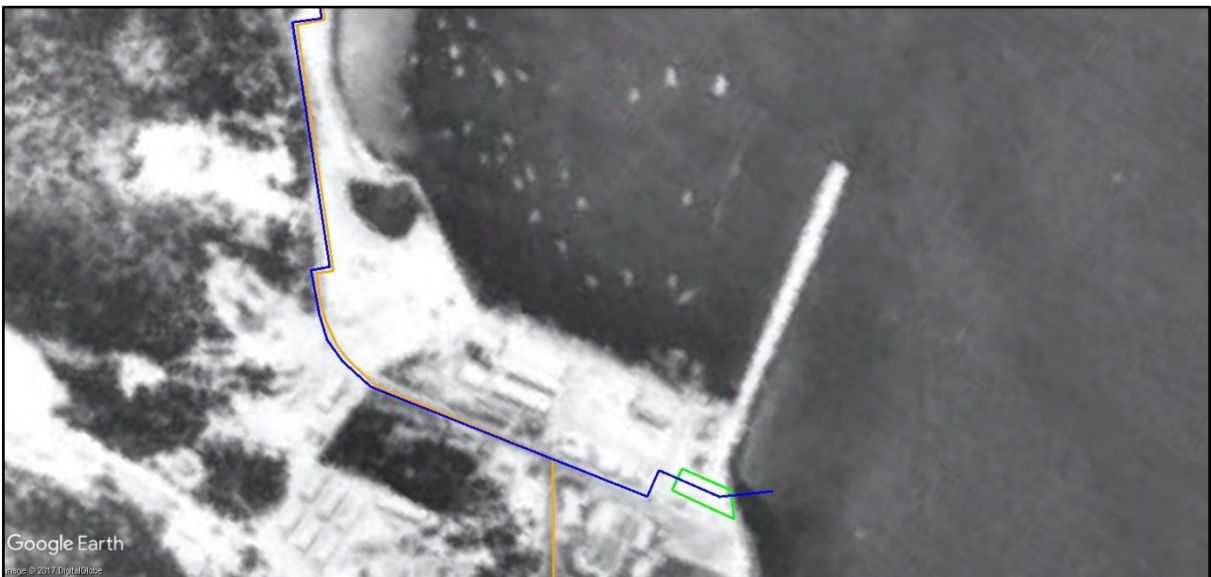


Figure 5.3.5: Raw water pipeline (including marine abstraction), raw water pump station site, and portion of brine discharge pipeline in local context 1958.
(Source: Chief Directorate National Geo-spatial Information. 424/58_001_07045).

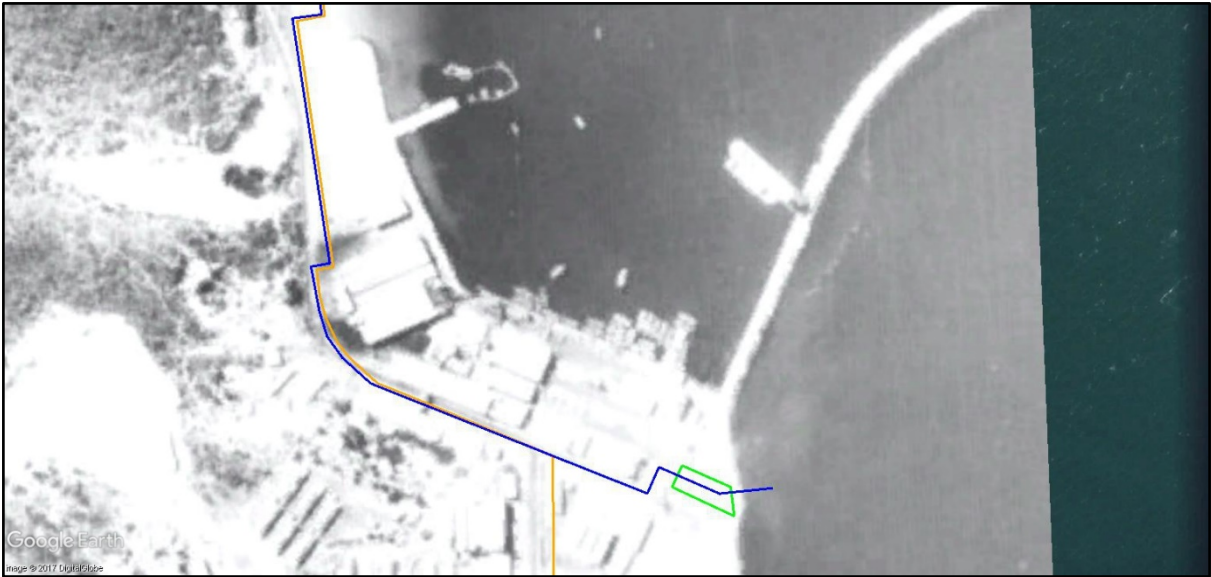


Figure 5.3.5: Raw water pipeline (including marine abstraction), raw water pump station site, and portion of brine discharge pipeline in local context 1968.
(Source: Chief Directorate National Geo-spatial Information. 620/68_2_265).



Figure 5.3.5: Raw water pipeline (including marine abstraction), raw water pump station site, and portion of brine discharge pipeline in local context 1996.
(Source: Chief Directorate National Geo-spatial Information. 994/96_01N_00001).

5.4. RAW WATER PUMP STATION

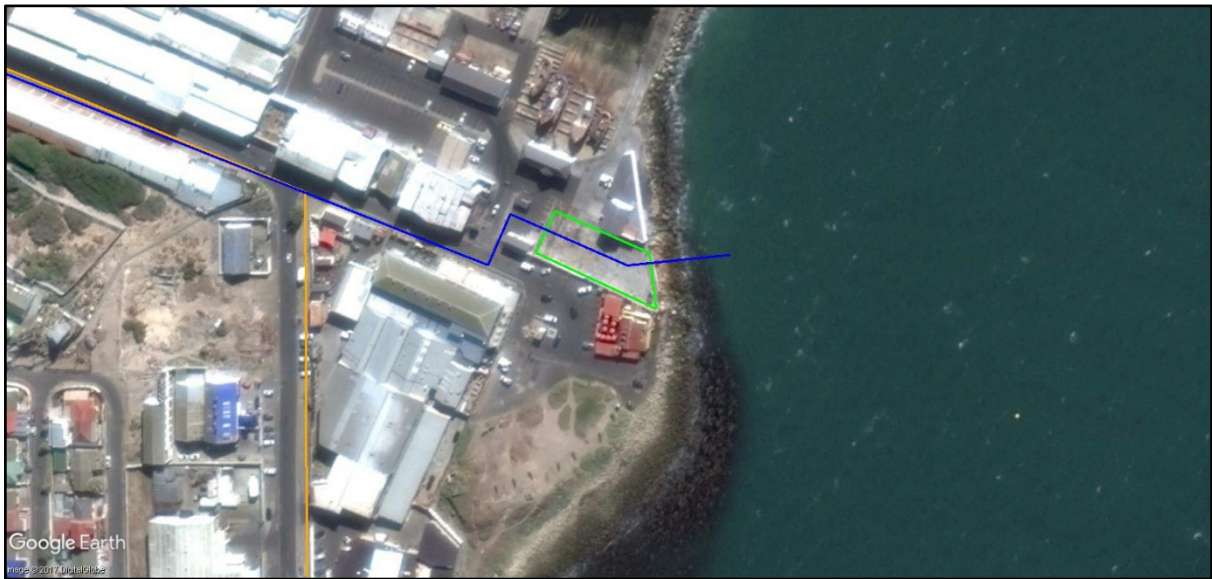


Figure 5.4.1: Raw water pump station site, raw water pipeline (including marine abstraction), and portion of brine discharge pipeline in local context 2017. (Source: Google Earth, 2017-05-12).

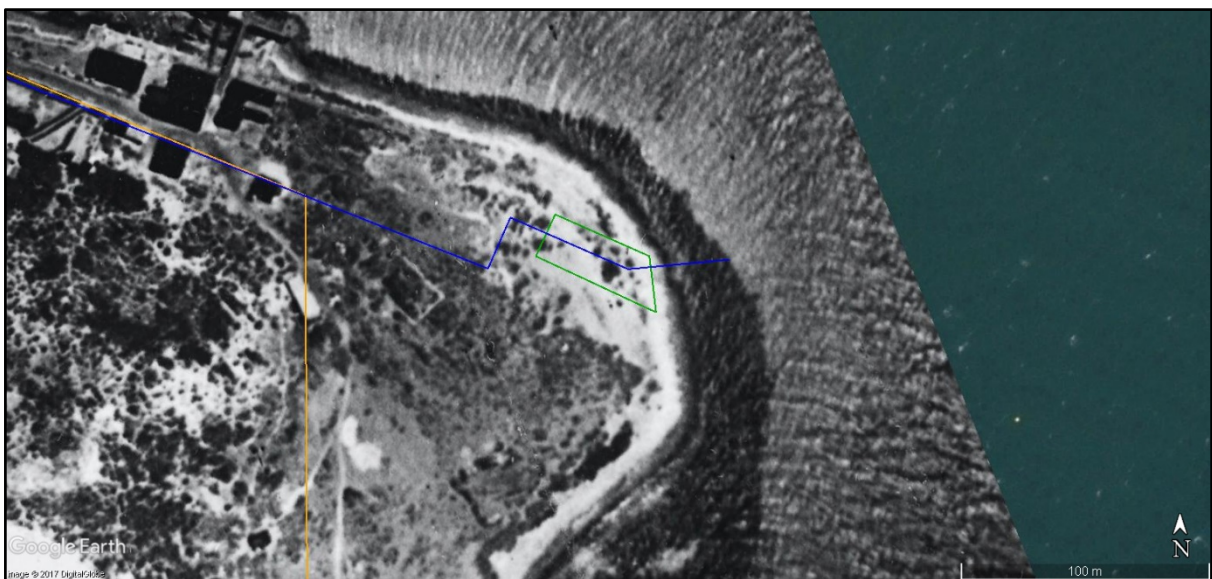


Figure 5.4.2: Raw water pump station site, raw water pipeline (including marine abstraction), and portion of brine discharge pipeline in local context 1926. (Source: Chief Directorate National Geo-spatial Information. 1926_33_1267).

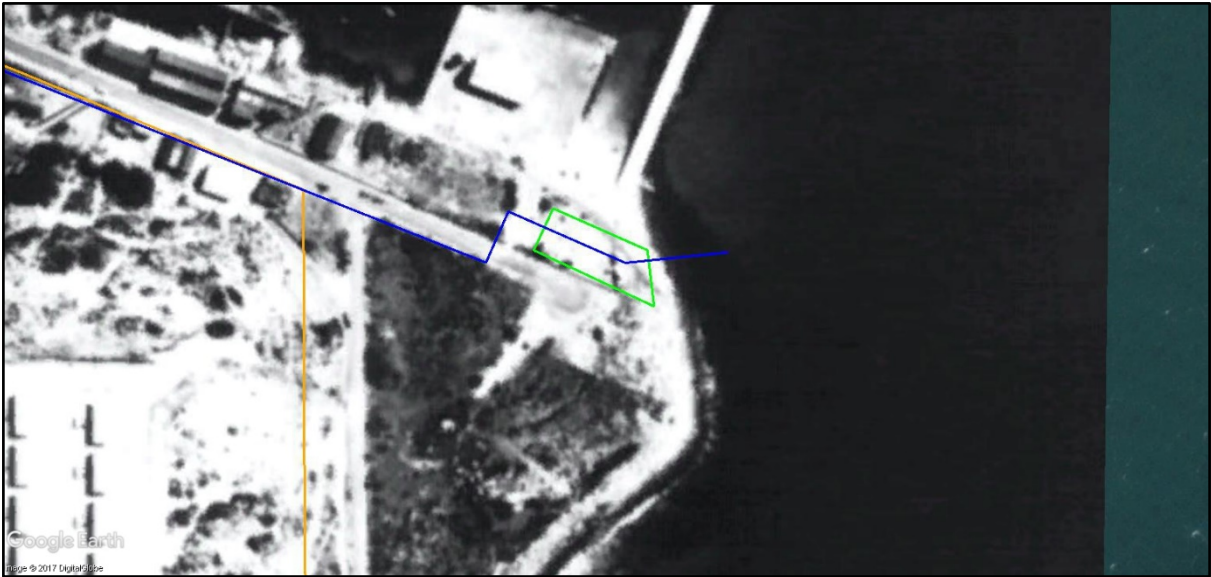


Figure 5.4.3: Raw water pump station site, raw water pipeline (including marine abstraction), and portion of brine discharge pipeline in local context 1945.
(Source: Chief Directorate National Geo-spatial Information. 61/44_2_317).

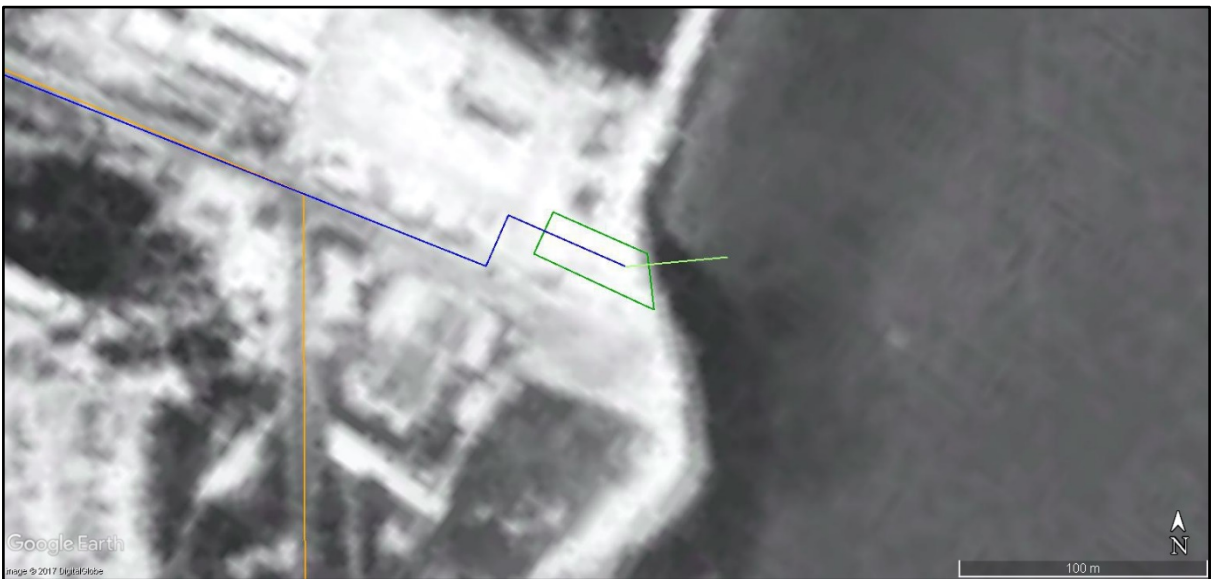


Figure 5.4.4: Raw water pump station site, raw water pipeline (including marine abstraction), and portion of brine discharge pipeline in local context 1958.
(Source: Chief Directorate National Geo-spatial Information. 424/58_001_07045).

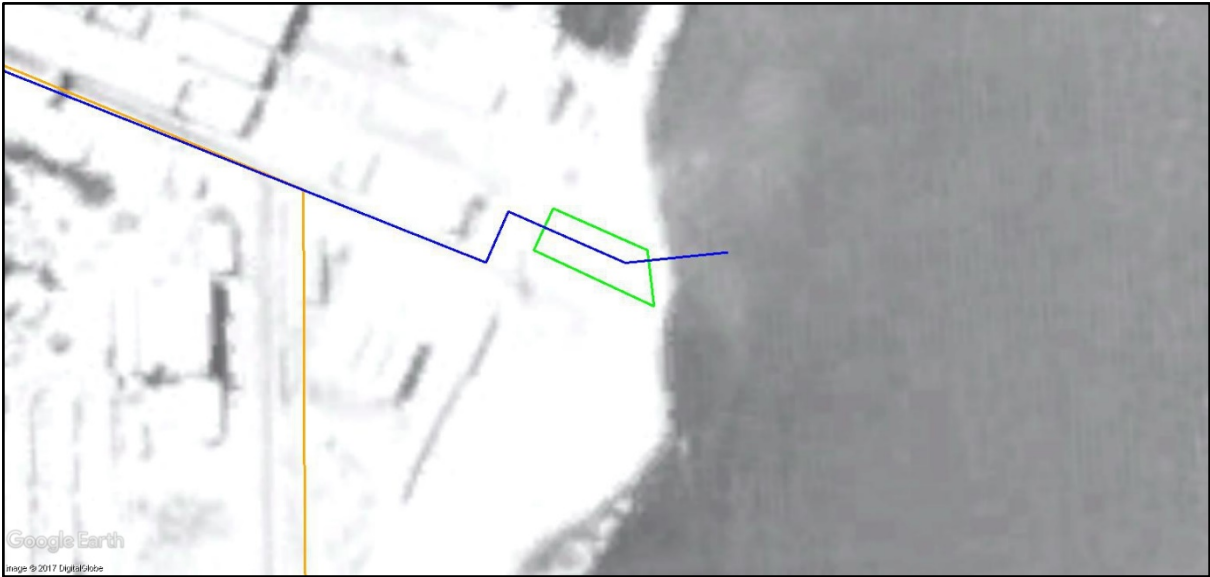


Figure 5.4.5: Raw water pump station site, raw water pipeline (including marine abstraction), and portion of brine discharge pipeline in local context 1968.
(Source: Chief Directorate National Geo-spatial Information. 620/68_2_265).



Figure 5.4.6: Raw water pump station site, raw water pipeline (including marine abstraction), and portion of brine discharge pipeline in local context 1996.
(Source: Chief Directorate National Geo-spatial Information. 994/96_01N_00001).

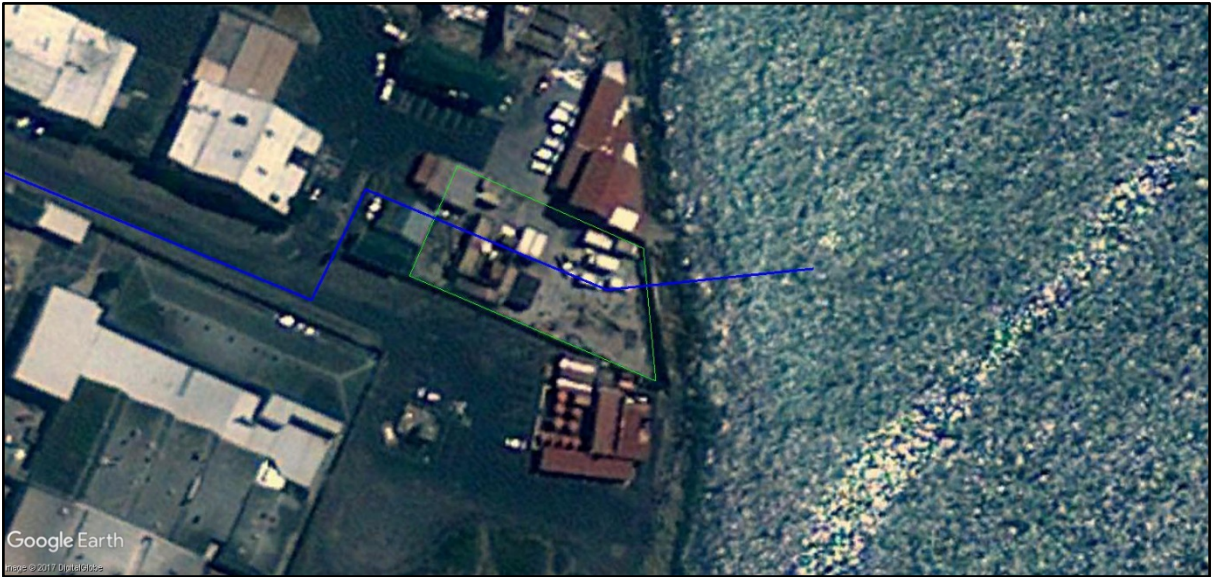


Figure 5.4.7: Raw water pump station site and raw water pipeline (including marine abstraction) pipeline in local context 2010.
(Source: Google Earth, 2010-11-30).



Figure 5.4.8: Raw water pump station site and raw water pipeline (including marine abstraction) pipeline in local context 2014.
(Source: Google Earth, 2014-02-25).



Figure 5.4.8: Raw water pump station site and raw water pipeline (including marine abstraction) pipeline in local context 2017.
(Source: Google Earth, 2017-05-12).

5.5. TERMINAL PORTION OF BRINE DISCHARGE PIPELINE



Figure 5.5.1: Raw water pump station site, raw water pipeline (including marine abstraction), and portion of brine discharge pipeline in local context 2017.
(Source: Google Earth, 2017-05-12).

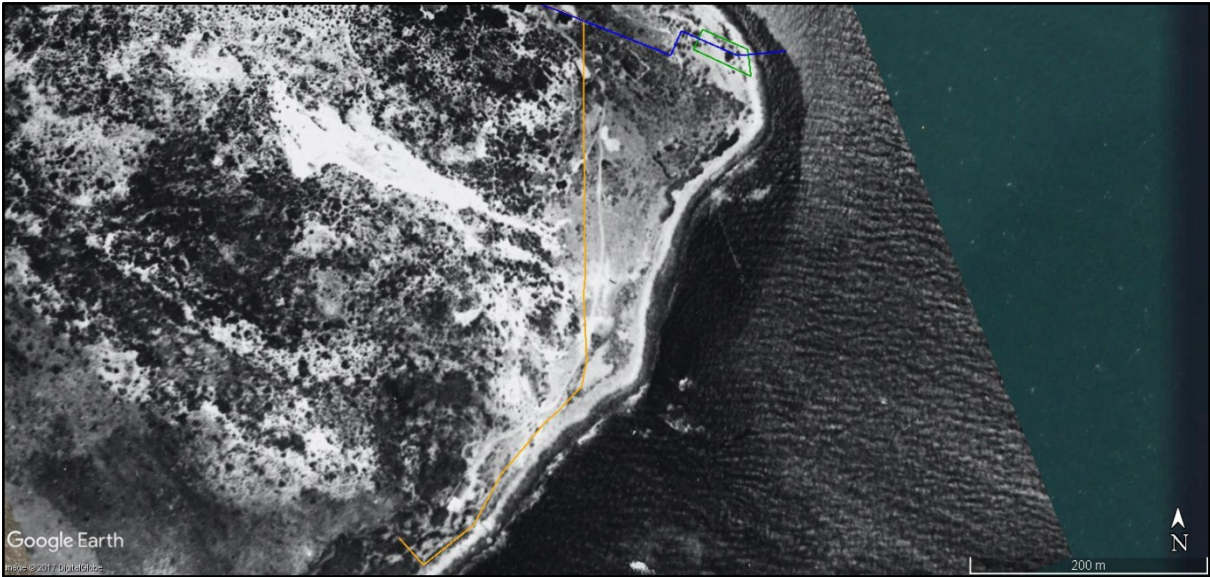


Figure 5.5.2: Raw water pump station site, raw water pipeline (including marine abstraction), and portion of brine discharge pipeline in local context 1926.
(Source: Chief Directorate National Geo-spatial Information. 1926_33_1267).

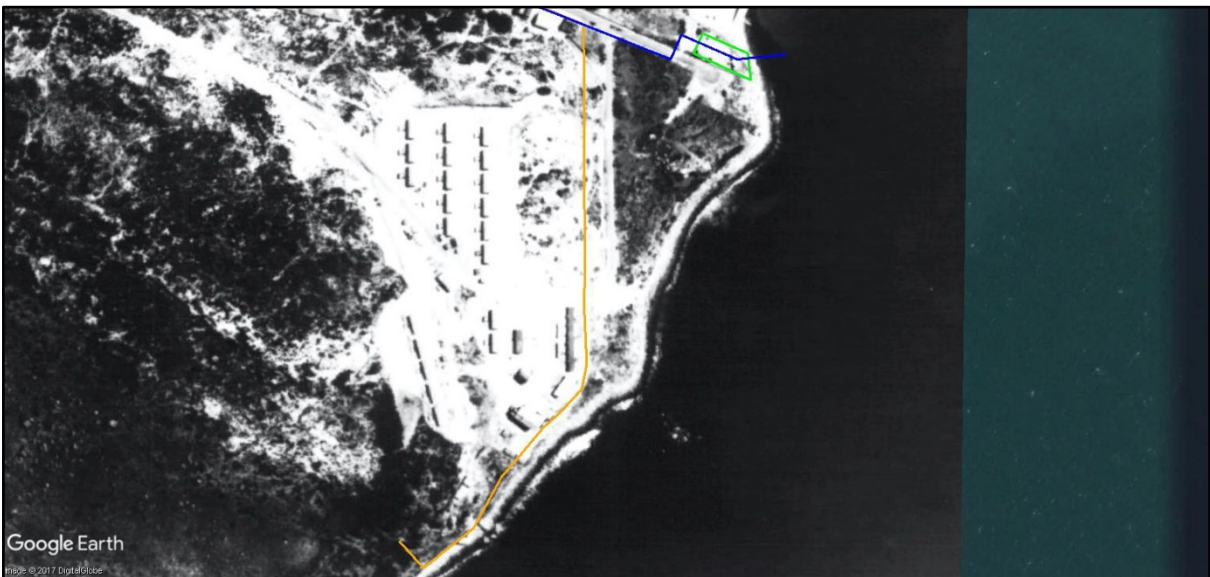


Figure 5.5.3: Raw water pump station site, raw water pipeline (including marine abstraction), and portion of brine discharge pipeline in local context 1945.
(Source: Chief Directorate National Geo-spatial Information. 61/44_2_317).



Figure 5.5.4: Raw water pump station site, raw water pipeline (including marine abstraction), and portion of brine discharge pipeline in local context 1968.
(Source: Chief Directorate National Geo-spatial Information. 620/68_2_265).

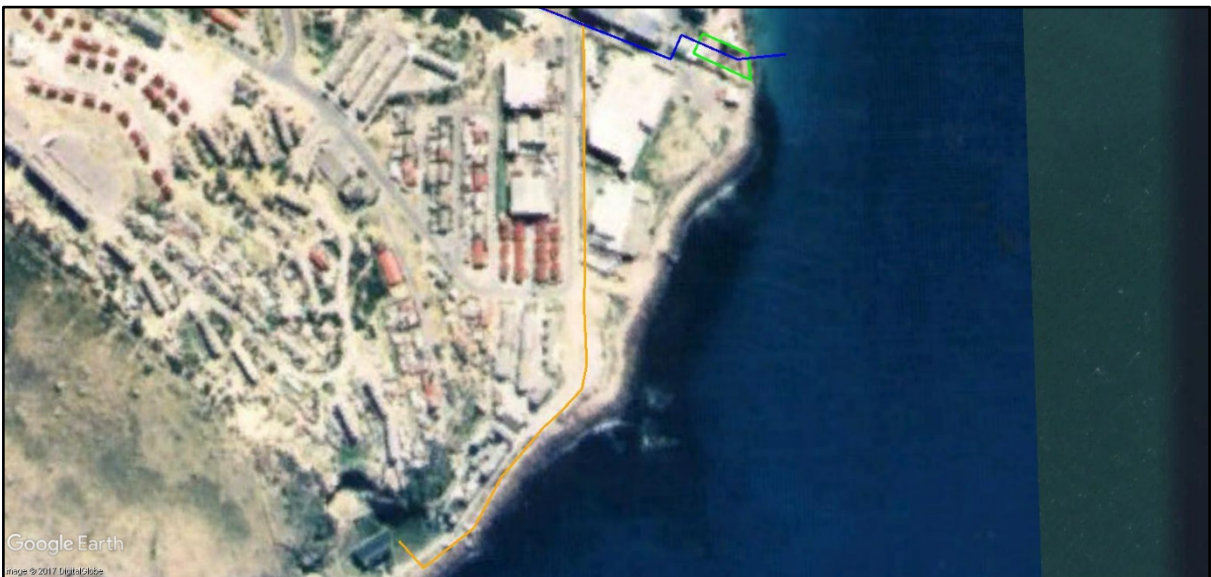


Figure 5.5.5: Raw water pump station site, raw water pipeline (including marine abstraction), and portion of brine discharge pipeline in local context 1996.
(Source: Chief Directorate National Geo-spatial Information. 994/96_01N_00001).