

## ANNEXURE 6: AFFECTED ERVEN (WEST TO EAST)

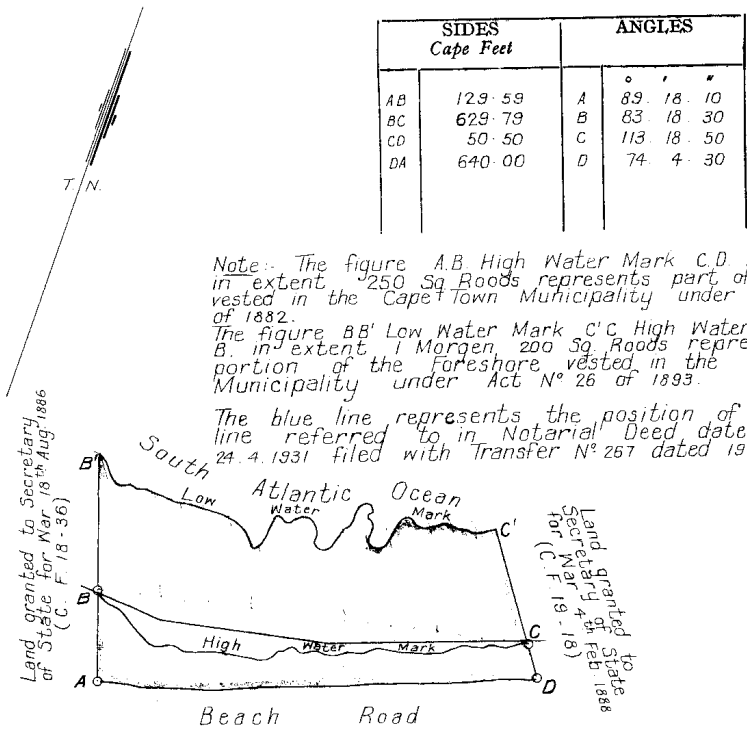
PROPERTY	IMPACT	LATITUDE	LONGITUDE	SIZE	CSG DIAGRAM
Erf 1141	Brine discharge	-33.901499	18.399237	46089.1 m <sup>2</sup>	2006/85
Erf 1143	Brine discharge	-33.900760	18.401739	13550.2 m <sup>2</sup>	478/1937
Erf 1197	Brine discharge	-33.899881	18.404180	28552.1 m <sup>2</sup>	863/1887
Erf 1198	Plant and connecting in and out pipelines	-33.899035	18.409207	49009.8 m <sup>2</sup>	6350/1936
Beach Road portion	Treated water injection	-33.899717	18.408556	N.a.	B66/1923
1245 (SG Street Parcel ID)	Raw water intake	-33.900056	18.411308	N.a.	B66/1923
Erf RE/1056	Raw water intake	-33.901514	18.413317	1080649.5 m <sup>2</sup>	B66/1923
Erf RE/1252	Raw water intake	-33.902277	18.414441	19128.1 m <sup>2</sup>	B66/1923
Erf 173712	Raw water intake	-33.901821	18.414206	44371.5 m <sup>2</sup>	1344/2009

(Source: <https://gis.elsenburg.com/apps/cfm/#>)

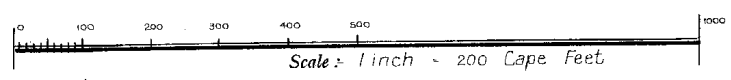
478. 1937.

Approved

*2.4.1937*  
 Surveyor-General.  
 3. 2. 1937



\* NOW E.F 1143 GREEN POINT



The figure A. B' Low Water Mark C' D Road A represents 1 Morgen 450 Sq. Roods Sq. Feet of land, called \* LOT C.T.M. N° 2 situate in the City of Cape Town.

Division of  
**PROVINCE OF CAPE OF GOOD HOPE**  
 Framed from a survey made in Sept. 1889 by Wm de Smidt Jnr. Govt. Sur.

*S.M. Walton*  
 Surveyor General 3/2/1937. Land Surveyor.

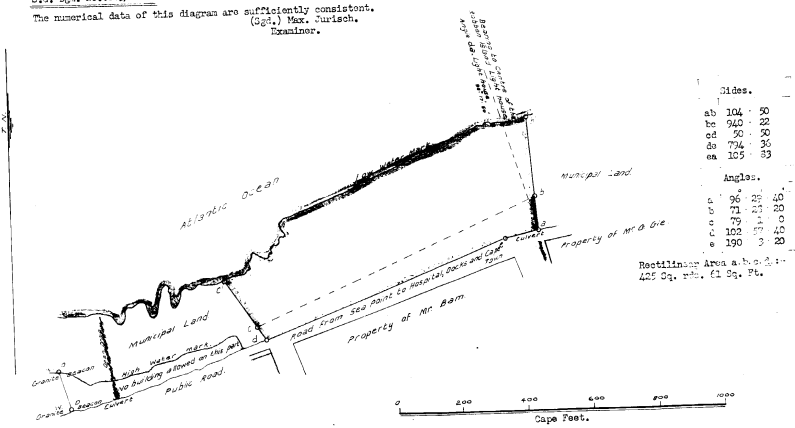
This diagram is annexed to the Cm Grant No. 57/1938 dated 16-2-1938 in favour of Council of the City of Cape Town.

S.G. File No. ~~76654~~ / 2856/39C  
 Survey Records No. E  
 Land held by Government by Transfer Deed N° 267 dated 19 March 1890  
 BHSX-1111 (M1580)

Department of Lands. Provincial Representative.

ERF 1143  
 Comp.  
 Ref. H-4

S.O. Plan No. 363/1887.  
 The numerical data of this diagram are sufficiently consistent.  
 (Sgt.) Max Jurisch,  
 Examiner.



**NOW REF NO. 1197 GREEN POINT.**

The above figure a-b-c-d-e represents 2 Morgen 336 Sq. rods 61 sq. feet of land situate at Green Point, between the Flash and Moulle Light-houses, within the Municipality of Cape Town, authorized by the Colonial Government to be granted for Defense purposes.

- Bounded Northwards by Low water mark Atlantic Ocean
- East " " Municipal Land
- South " " Public Road
- West " " Municipal Land

Copied from the diagram attached to transfer made in favor of the Colonial Govt. dated 31st December, 1887.

by me, (Sgt.) H.R. Mays,  
 Draftsman,  
 Surveyor-General's Office,  
 14th January, 1888.

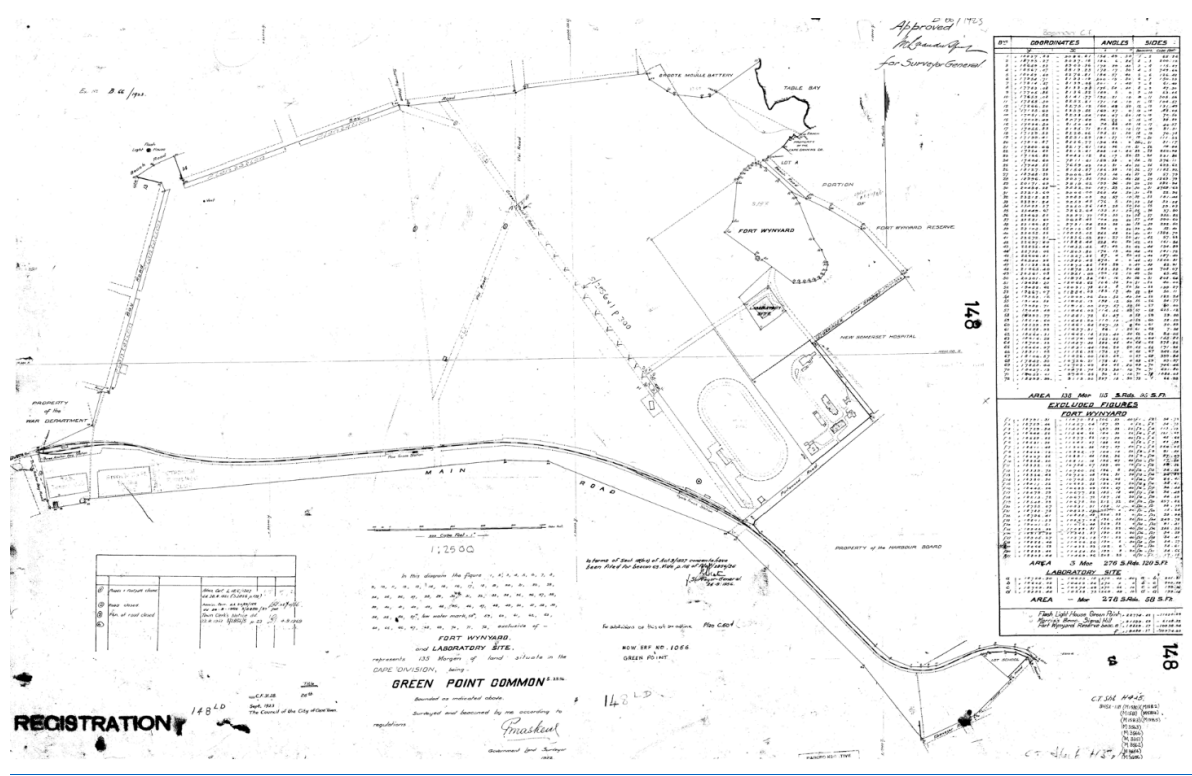
Surveyed by me, Wm. de Smit, Junr Oct., 1887.  
 Govt. Land Surveyor.

Copied from the diagram relating to  
 This Deed No. C. 7.19. 18  
 dated 14th February, 1888  
 in favour of  
 Secretary of State for War.  
*Wm. de Smit*  
 SURVEYOR-GENERAL  
 20.6.1951, CAPE TOWN.

BHSX-111 (M1580)

C

H.T.

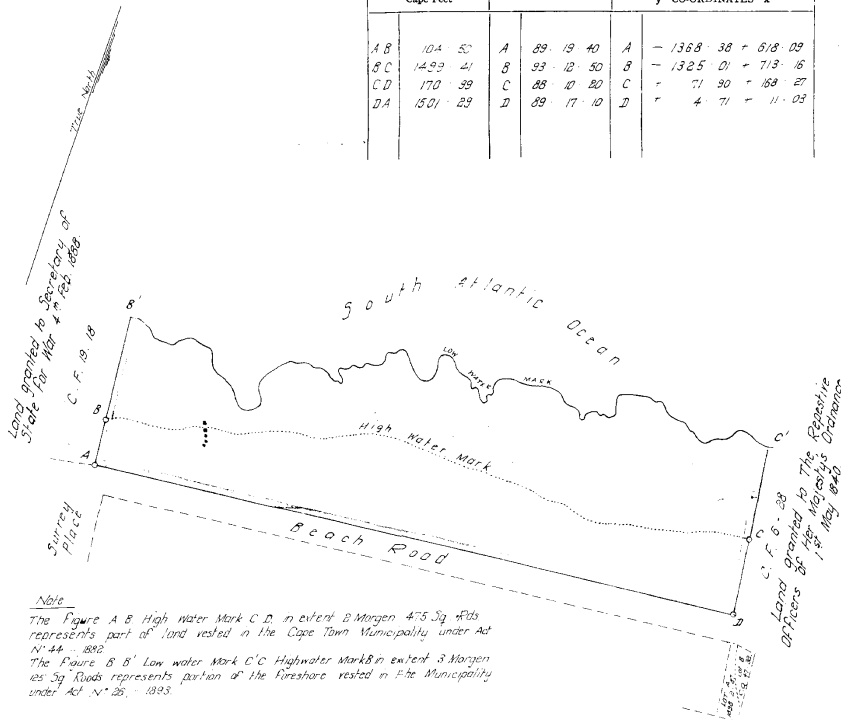


6350, 1938.

Approved

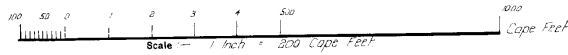
Surveyor-General

SIDES Cape Feet	ANGLES	SYSTEM L <sub>1</sub> COORDINATES	
		y	x
A B 104.52	A 89.19 40	A -1368.38	+ 618.09
B C 149.94	B 93.12 50	-1325.01	+ 713.16
C D 170.39	C 88.10 20	+ 71.90	+ 168.27
D A 1501.29	D 89.17 10	+ 4.71	+ 11.03



NOW ERF NO 1198

GREEN POINT



The figure A B' low water mark C' D' represents 6 Morgen - Sq. Roods - Sq. Feet of land, called

**LOT C.T.M.N.1**

situate in the City of Cape Town ~~DIVISION of~~

PROVINCE OF CAPE OF GOOD HOPE

Framed from a Survey made in 1888 by T. Tennant Watson, Government Surveyor,

for M. J. Wilton  
Land Surveyor-General.  
9/1/1937.

This diagram is annexed to Er. Grant Deed in favour of  
No. 38/1938 dated 16-2-1938

Land held by Government by Transfer Deed N<sup>o</sup> 158 dated 13 April 1889.

S. G. File No. S. 7665/1  
Survey Records No. E.  
Cape Town Sheets  
100. Nos. H.A. I.A.

Registrar of Deeds.

ERF 1198  
Corner  
H.A.

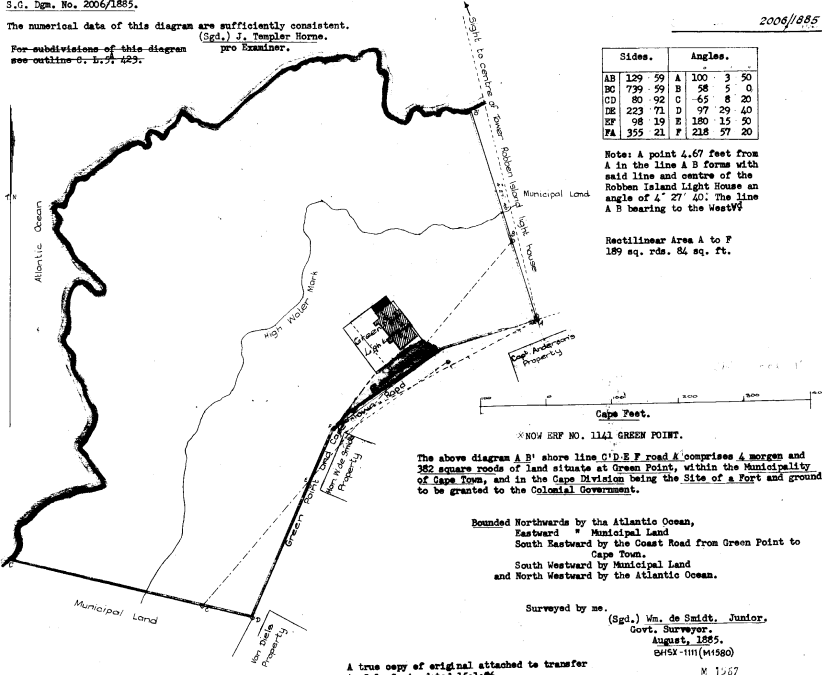
C

13/4/40

S.C. Dgm. No. 2006/1885.

The numerical data of this diagram are sufficiently consistent.  
 (Sgd.) J. Templer Horne.  
 For subdivisions of this diagram pro Examiner.  
 see outline C, E, F, 423.

2006/1885



Sides.	Angles.
AB 129.59	A 100.3.50
BC 739.59	B 58.5.0
CD 80.92	C 65.8.20
DE 223.71	D 97.29.40
EF 98.19	E 180.15.50
FA 355.21	F 218.57.20

Note: A point 4.67 feet from A in the line A B forms with said line and centre of the Robben Island Light House an angle of  $4^{\circ} 27' 40''$ . The line A B bearing to the WestW

Hectilinear Area A to F  
 189 sq. rds. 84 sq. ft.

CAPE FEET.

NO. 1141 GREEN POINT.

The above diagram A B shore line C D E F road A comprises a morgen and 382 square rods of land situate at Green Point, within the Municipality of Cape Town, and in the Cape Division being the Site of a Fort and ground to be granted to the Colonial Government.

Bounded Northwards by the Atlantic Ocean,  
 Eastward by Municipal Land  
 South Eastward by the Coast Road from Green Point to Cape Town.  
 South Westward by Municipal Land  
 and North Westward by the Atlantic Ocean.

Surveyed by me.  
 (Sgd.) Wm. de Smit, Junior.  
 Govt. Surveyor,  
 August, 1885.  
 S.M.S. 1111 (M1580)

A true copy of original attached to transfer  
 to Col. Govt. dated 15/11/86.  
 Sur. Genl. Office.  
 June, 1886.

H.R. Kuyt.  
 Draftsman.

Copied from the diagram relating to  
 Title Deed No. O. F. 18. 36  
 dated 18th August, 1886  
 in favour of  
 Secretary of State for War.  
 H. R. Kuyt  
 JUN 1951  
 CAPE TOWN.