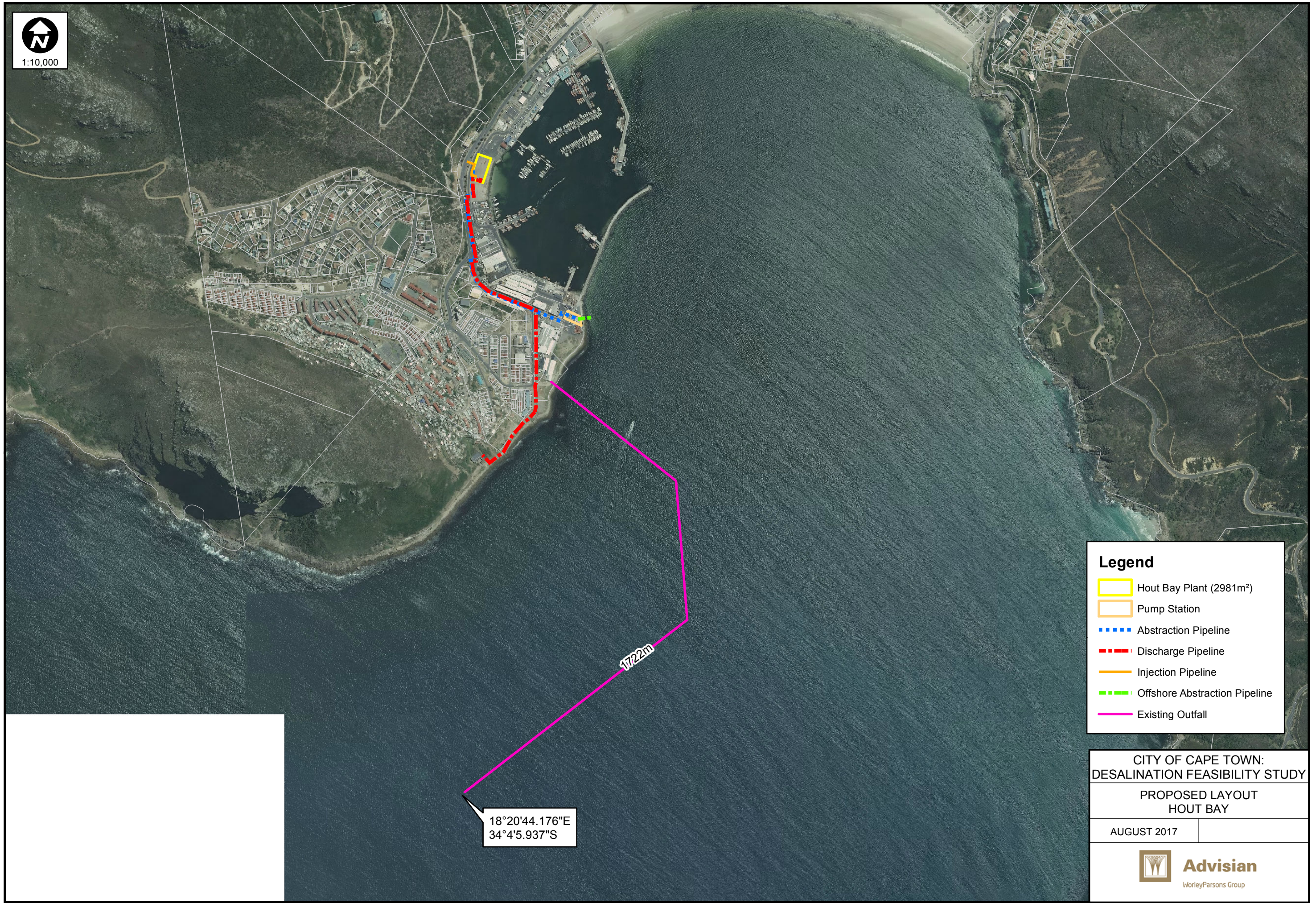











1:10,000



Legend

-  Hout Bay Plant (2981m²)
-  Pump Station
-  Abstraction Pipeline
-  Discharge Pipeline
-  Injection Pipeline
-  Offshore Abstraction Pipeline
-  Existing Outfall

CITY OF CAPE TOWN:
DESALINATION FEASIBILITY STUDY

PROPOSED LAYOUT
HOUT BAY

AUGUST 2017



18°20'44.176"E
34°4'5.937"S