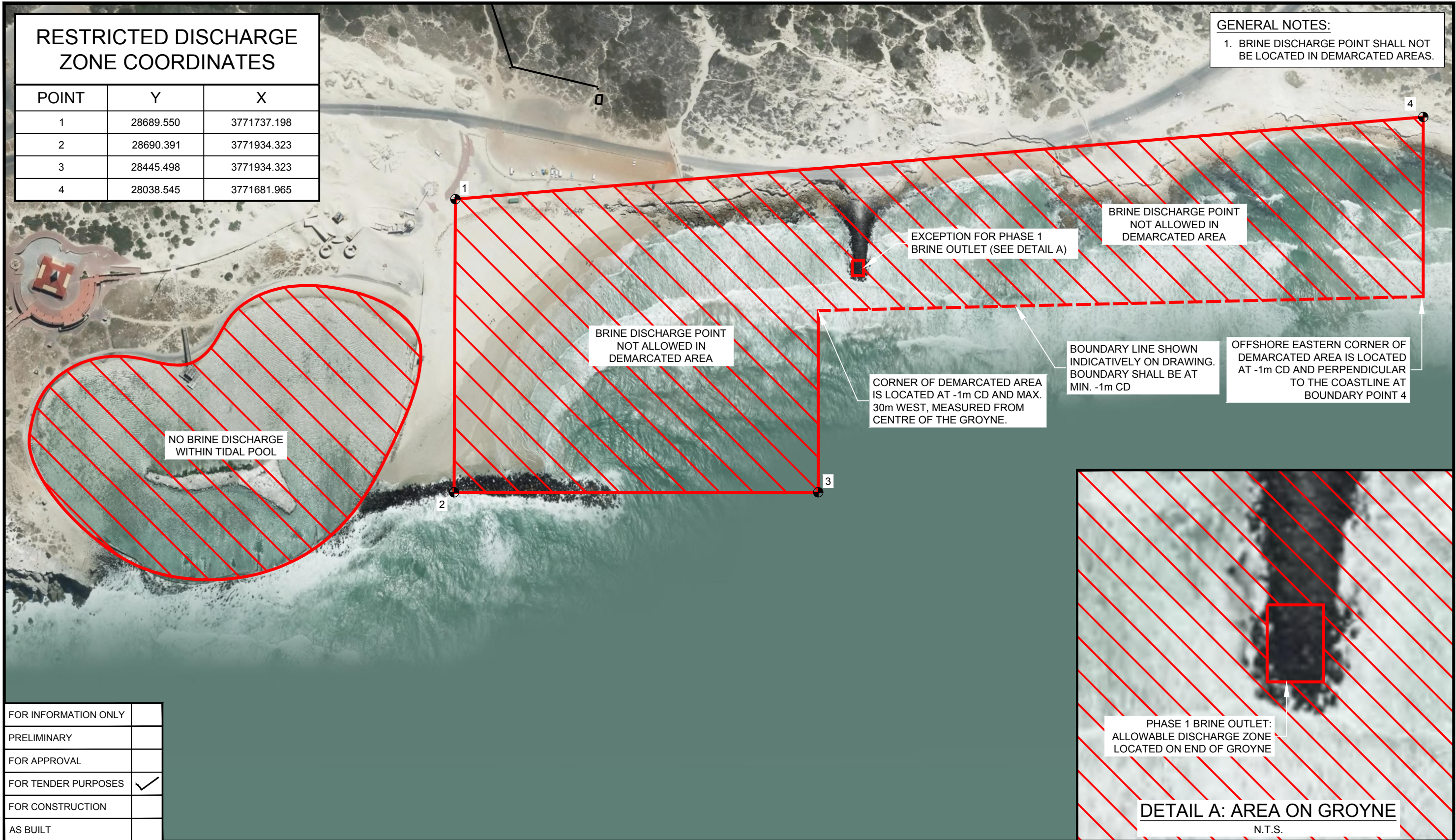


# RESTRICTED DISCHARGE ZONE COORDINATES

POINT	Y	X
1	28689.550	3771737.198
2	28690.391	3771934.323
3	28445.498	3771934.323
4	28038.545	3771681.965

**GENERAL NOTES:**  
 1. BRINE DISCHARGE POINT SHALL NOT BE LOCATED IN DEMARCATED AREAS.



NO BRINE DISCHARGE WITHIN TIDAL POOL

BRINE DISCHARGE POINT NOT ALLOWED IN DEMARCATED AREA

EXCEPTION FOR PHASE 1 BRINE OUTLET (SEE DETAIL A)

BRINE DISCHARGE POINT NOT ALLOWED IN DEMARCATED AREA

CORNER OF DEMARCATED AREA IS LOCATED AT -1m CD AND MAX. 30m WEST, MEASURED FROM CENTRE OF THE GROUYNE.

BOUNDARY LINE SHOWN INDICATIVELY ON DRAWING. BOUNDARY SHALL BE AT MIN. -1m CD

OFFSHORE EASTERN CORNER OF DEMARCATED AREA IS LOCATED AT -1m CD AND PERPENDICULAR TO THE COASTLINE AT BOUNDARY POINT 4

PHASE 1 BRINE OUTLET: ALLOWABLE DISCHARGE ZONE LOCATED ON END OF GROUYNE

**DETAIL A: AREA ON GROUYNE**  
N.T.S.

FOR INFORMATION ONLY	
PRELIMINARY	
FOR APPROVAL	
FOR TENDER PURPOSES	✓
FOR CONSTRUCTION	
AS BUILT	

REV	DATE	REVISION DESCRIPTION	DRAWN	DESIGNED	REV ENGINEER	CONSULTING ENGINEER
A	11/09/17	FOR TENDER	KL	MLR	MC	WPRSA



CLIENT  
 CITY OF CAPE TOWN  
 ISIXEKO SASEKAPA  
 STAD KAAPSTAD

PROJECT  
**WATER RESILIENCE PROJECT**

DRAWING DESCRIPTION  
**MONWABISI PHASE 1 EXCLUSION ZONES FOR BRINE DISCHARGE POINT**

"This drawing is prepared solely for the use of the contractual customer of WorleyParsons and WorleyParsons assumes no liability to any other party for any representations contained in this drawing."

**WorleyParsons**  
 resources & energy  
 P.O.Box 398  
 BELLVILLE 7535  
 TEL:+27 21912 3000  
 FAX:+27 21912 3222  
 e-mail: capetown.office@worleyparsons.com

DATE AUGUST 2017	SCALE: (ORIGINAL A3) 1:2500
DRG No. C00686-ZB-MA-DAL-0005-001	REV. A