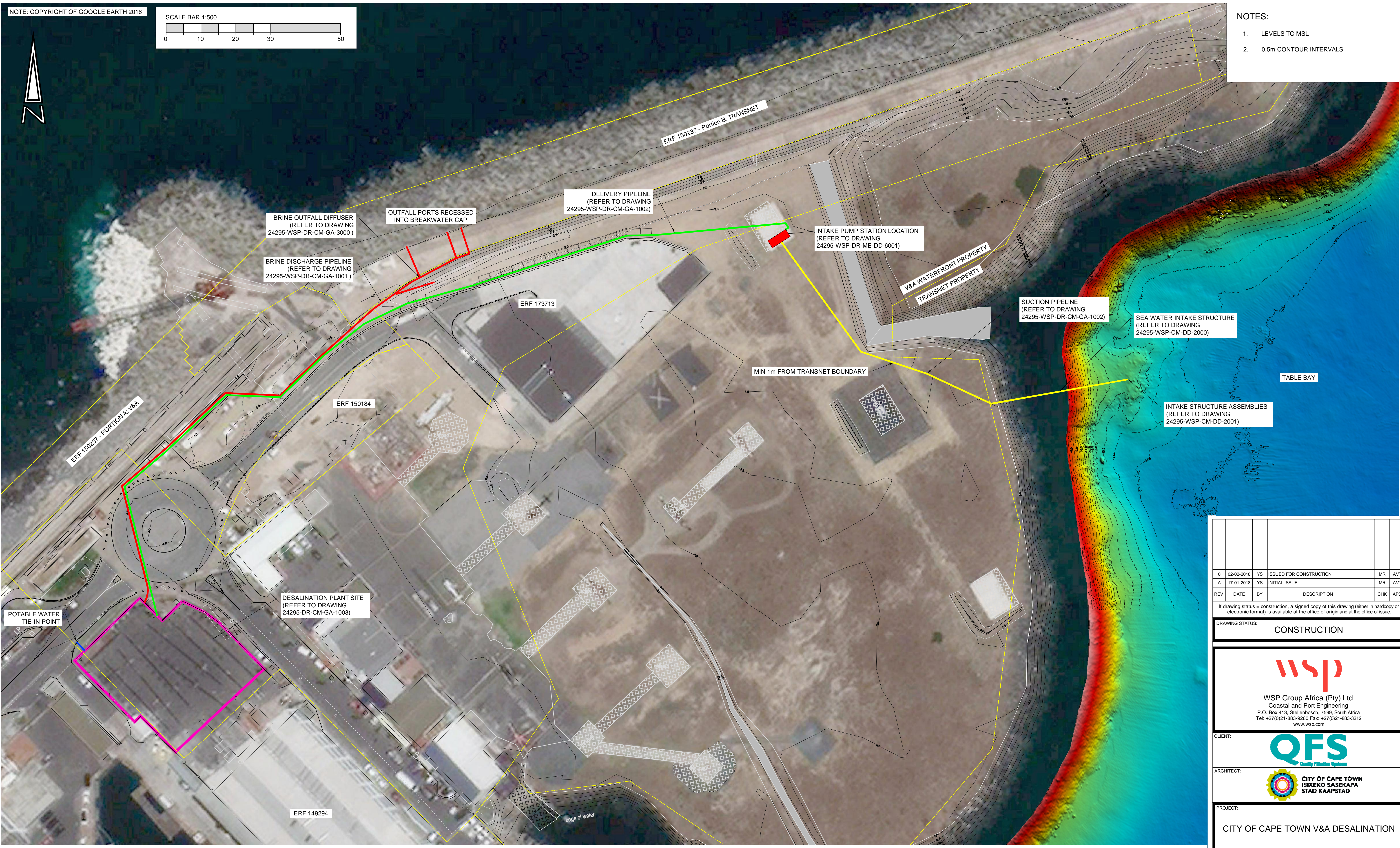


NOTES:

1. LEVELS TO MSL
2. 0.5m CONTOUR INTERVALS



REV	DATE	BY	DESCRIPTION	CHK	APD
0	02-02-2018	YS	ISSUED FOR CONSTRUCTION	MR	AVT
A	17-01-2018	YS	INITIAL ISSUE	MR	AVT

DRAWING STATUS: **CONSTRUCTION**

wsp
 WSP Group Africa (Pty) Ltd
 Coastal and Port Engineering
 P.O. Box 413, Stellenbosch, 7599, South Africa
 Tel: +27(0)21-883-9260 Fax: +27(0)21-883-3212
 www.wsp.com

CLIENT: **QFS**
 Quality Filtration Systems

ARCHITECT: **CITY OF CAPE TOWN**
 ISIXEKO SASAKAPA
 STAD KAAPSTAD

PROJECT: **CITY OF CAPE TOWN V&A DESALINATION**

TITLE: **GENERAL ARRANGEMENT: SITE LAYOUT AND SERVICES**

SCALE @ A1: 1:500	CHECKED: M. RETIEF	APPROVED: A. VAN TONDER
DESIGN: F. VAN EEDEN	DRAWN: L. KILIAN	DATE: 02/02/2018
PROJECT No: 24295	DRAWING No: DR-CM-GA-1000	REV: 0

GENERAL ARRANGEMENT: SITE LAYOUT AND SERVICES
 SCALE 1:500