

## ANNEXURE A

Photographs of existing building and surrounding context

## 5. Documentation and description of existing buildings of Ptn 3 of 498 – outside

Pictures showing current state of buildings and structures on 4 Roseveare Road Scottsville, Pietermaritzburg.

Site visit 22<sup>nd</sup> of September 2020 by tsica heritage consultants.

### 5.1 Portion 3 of Erf 498 (4 Roseveare Road, Scottsville)

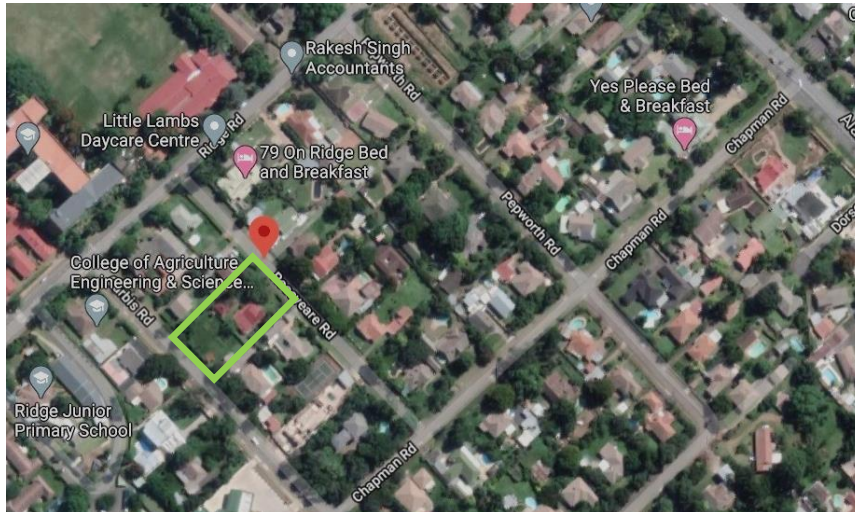


Fig. 6\_Aerial location map with 4 Roseveare Road indicated in green along the south-western side of Roseveare Road in close proximity of the College of Agriculture Engineerings & Science  
(Source: Google maps, 2020)

#### 5.1.1 Main Residence



Fig. 7\_Street elevation with main entrance to Roseveare Road, single storey red brick and corrugated roof residence with triangular gable and corner verandah supported by columns  
(Source: tsica heritage consultants, 22.09.2020)



Fig. 8\_North-eastern street elevation with main entrance to Roseveare Road  
 (Source: tsica heritage consultants, 22.09.2020)



Fig. 9 & 10\_View towards main entrance with original wooden entrance door (left); main pitched roof with original red brick façade and wooden sash windows (right)  
 (Source: tsica heritage consultants, 22.09.2020)



Fig. 11 & 12\_Original wooden sash windows towards the verandah (left); original wooden main entrance door (right)  
(Source: tsica heritage consultants, 22.09.2020)



Fig. 13\_Main staircase along Street elevation to verandah  
(Source: tsica heritage consultants, 22.09.2020)



Fig. 14\_Original main door key  
(Source: tsica heritage consultants, 22.09.2020)



Fig. 15\_Verandah roof supported by columns  
(Source: tsica heritage consultants, 22.09.2020)



Fig. 16 & 17\_Verandah wrapped around the corner (left); Verandah roof is supported by a row of columns (right)  
(Source: tsica heritage consultants, 22.09.2020)

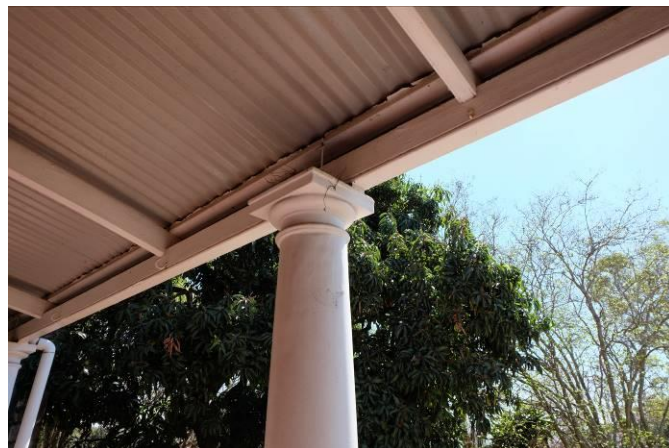


Fig. 18\_ Columns support Verandah roofing with wooden trusses  
(Source: tsica heritage consultants, 22.09.2020)



Fig. 19\_ Verandah roofing with wooden trusses  
(Source: tsica heritage consultants, 22.09.2020)



Fig. 20 & 21\_ North-western elevation (left); staircase to verandah from garage side (right)  
(Source: tsica heritage consultants, 22.09.2020)



Fig. 22\_ Roofing detail with air vent and fine detailing  
(Source: tsica heritage consultants, 22.09.2020)



Fig. 23\_South-western corner which was later added to the original house  
(Source: tsica heritage consultants, 22.09.2020)

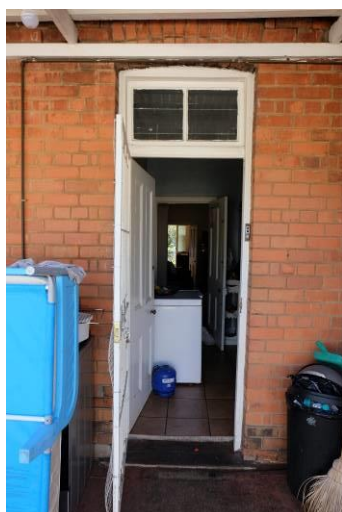


Fig. 24 to 25\_Southern elevation towards the garden with windows and doors opening on to the back stoep  
(Source: tsica heritage consultants, 22.09.2020)



Fig. 26\_South-eastern elevation with later extended section towards the garden side  
(Source: tsica heritage consultants, 22.09.2020)

## 5.1.2 Outbuildings



Fig. 27\_View from neighbouring property towards the garden side with a number of outbuilding structures (Source: tsica heritage consultants, 22.09.2020)



Fig. 28\_Original garage red brick structure to be accessed from Carbis Road (Source: tsica heritage consultants, 22.09.2020)



Fig. 29\_Original garage red brick structure located along the boundary line towards Carbis Road (Source: tsica heritage consultants, 22.09.2020)





Fig. 30\_Original red brick structure used as cow stable  
(Source: tsica heritage consultants, 22.09.2020)



Fig. 31 & 32\_Original red brick structure used outside toilet  
(Source: tsica heritage consultants, 22.09.2020)



Fig. 33\_View towards main residence from garden side  
(Source: tsica heritage consultants, 22.09.2020)



Fig. 34\_View along the garden in north-western direction  
(Source: tsica heritage consultants, 22.09.2020)

## 6. Documentation and description of existing buildings on sites – inside

Pictures showing current state of the inside of the buildings site along Roseveare Road & Carbis Road in Scottsville, Pietermaritzburg.

Site visit 22<sup>nd</sup> of September 2020 by tsica heritage consultants.

### 6.1 Portion 3 of Erf 498 (4 Roseveare Road, Scottsville)



Fig. 35\_Original fireplace and wooden floor boards in bedroom  
(Source: tsica heritage consultants, 22.09.2020)

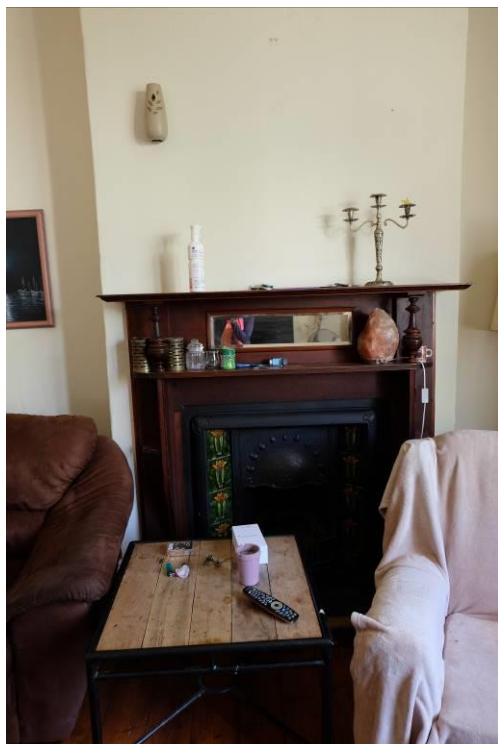


Fig. 36 & 37\_Location of original fireplace in lounge area which shares the chimney with fireplace in bedroom (left); original wooden door with low door knobs (right)  
(Source: tsica heritage consultants, 22.09.2020)



Fig. 38\_Original ceiling boards in lounge area  
(Source: tsica heritage consultants, 22.09.2020)



Fig. 39\_Original air vent with floral pattern  
(Source: tsica heritage consultants, 22.09.2020)



Fig. 40\_Original wooden skirtings and Oregon pine floor boards along the passage and lounge area  
(Source: tsica heritage consultants, 22.09.2020)



Fig. 41\_Original wooden skirtings and door frames in most of the rooms still in good condition  
(Source: tsica heritage consultants, 22.09.2020)



Fig. 42 & 43\_View along the passage with high ceilings and original Oregon pine floor boards (left); view into added on kitchen along the south-western side of the residence (right)  
(Source: tsica heritage consultants, 22.09.2020)



Fig. 44 & 45\_View into bathroom which was later altered and added (left); view into second bathroom which was later altered and added (right)  
(Source: tsica heritage consultants, 22.09.2020)



Fig. 46 & 47\_Bedroom which was later added in south-western section of the house (left); window in bedroom which was later added in south-western section of the house (right)  
 (Source: tsica heritage consultants, 22.09.2020)



Fig. 48 & 49\_Main bedroom which was later added to the house (left); original bedroom with air vents and sash window towards the street side of the house (right)  
 (Source: tsica heritage consultants, 22.09.2020)

## 7. Documentation and description of surrounding area

Pictures showing current state of the surrounding area around the four sites along Roseveare Road & Carbis Road in Scottsville, Pietermaritzburg.

Site visit 22<sup>nd</sup> of September 2020 by tsica heritage consultants.

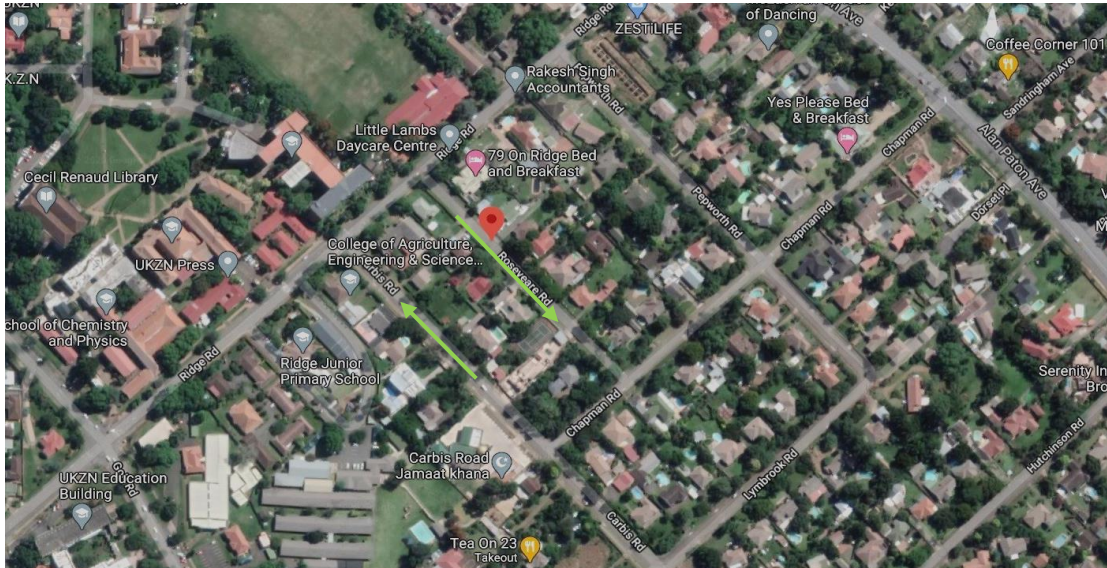


Fig. 50\_Aerial location map with Roseveare Road and Carbis Road indicated with green arrows, both streets are in close proximity to the College of Agriculture Engineering's & Science of the University of KwaZulu Natal Campus which is located towards the north-western side of the street blocks  
(Source: Google maps, 2020)

### 7.1 Views along Roseveare Road



Fig. 51\_View along Roseveare Road in south-eastern direction with 4 & 8 Roseveare Road along the right side of the Road  
(Source: tsica heritage consultants, 22.09.2020)



Fig. 52\_View in north-eastern direction to property No. 7 opposite 4 Roseveare Road  
(Source: tsica heritage consultants, 22.09.2020)



Fig. 53\_View in north-eastern direction to property No. 9 opposite 8 Roseveare Road  
(Source: tsica heritage consultants, 22.09.2020)



Fig. 54\_View along Roseveare Road in north-western direction  
(Source: tsica heritage consultants, 22.09.2020)

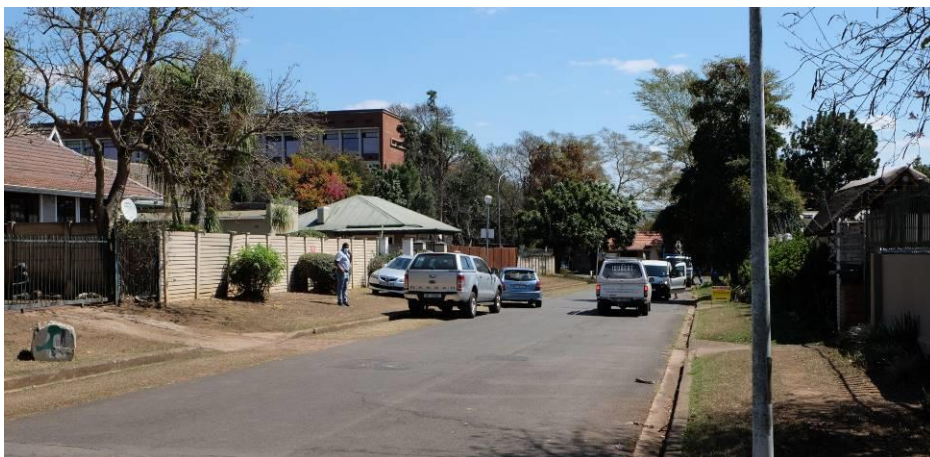


Fig. 55\_View along Roseveare Road in north-western direction towards University Campus  
(Source: tsica heritage consultants, 22.09.2020)



Fig. 56\_View along Roseveare Road in south-eastern direction  
(Source: tsica heritage consultants, 22.09.2020)

## 7.2 Views along Carbis Road



Fig. 57\_View along Carbis Road in south-eastern direction  
(Source: tsica heritage consultants, 22.09.2020)





Fig. 58\_View along Carbis Road in south-eastern direction with new double storey development  
(Source: tsica heritage consultants, 22.09.2020)

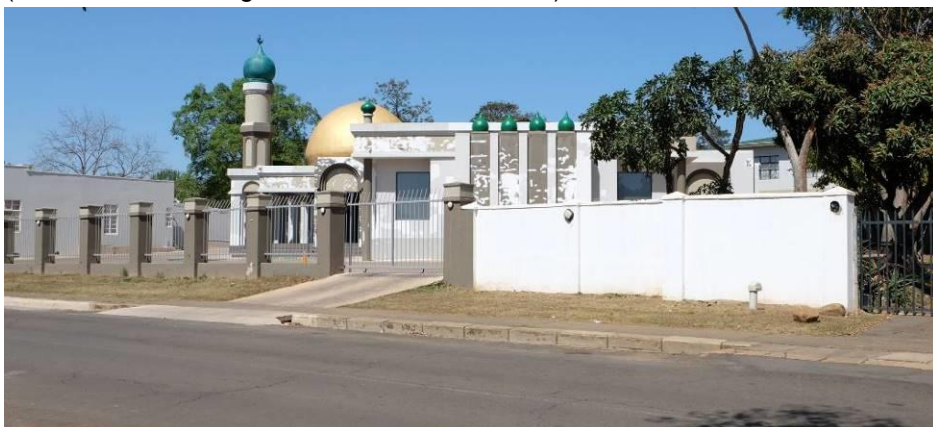


Fig. 59\_View along Carbis Road in south-western direction with newly built mosque  
(Source: tsica heritage consultants, 22.09.2020)



Fig. 60\_View along Carbis Road in western direction with newly built double storey residence  
(Source: tsica heritage consultants, 22.09.2020)



Fig. 61\_View along Carbis Road in north-western direction  
(Source: tsica heritage consultants, 22.09.2020)



Fig. 62\_View along Carbis Road in south-eastern direction  
(Source: tsica heritage consultants, 22.09.2020)

### 7.3 Typical building typologies along Roseveare Road and Carbis Road



Fig. 63\_New double storey development along Carbis Road  
(Source: tsica heritage consultants, 22.09.2020)



Fig. 64\_ Typical single storey tiled roof residence from around 1950s along Roseveare Road  
(Source: tsica heritage consultants, 22.09.2020)



Fig. 65\_ Typical historical residence from around 1910 with front verandah supported by columns with newly added roof tiles  
(Source: tsica heritage consultants, 22.09.2020)



Fig. 66\_ Single storey tiled roof residence from around 1930s along Carbis Road  
(Source: tsica heritage consultants, 22.09.2020)



Fig. 67\_Church building on the corner of Ridge Road and Carbis Road from around 1950s  
(Source: tsica heritage consultants, 22.09.2020)



Fig. 68\_Church building on the corner of Ridge Road and Carbis Road from around 1950s  
(Source: tsica heritage consultants, 22.09.2020)



Fig. 69\_Multi storey university building in north-western direction along Ridge Road  
(Source: tsica heritage consultants, 22.09.2020)



Fig. 70\_Single storey University building along Ridge Road  
(Source: tsica heritage consultants, 22.09.2020)