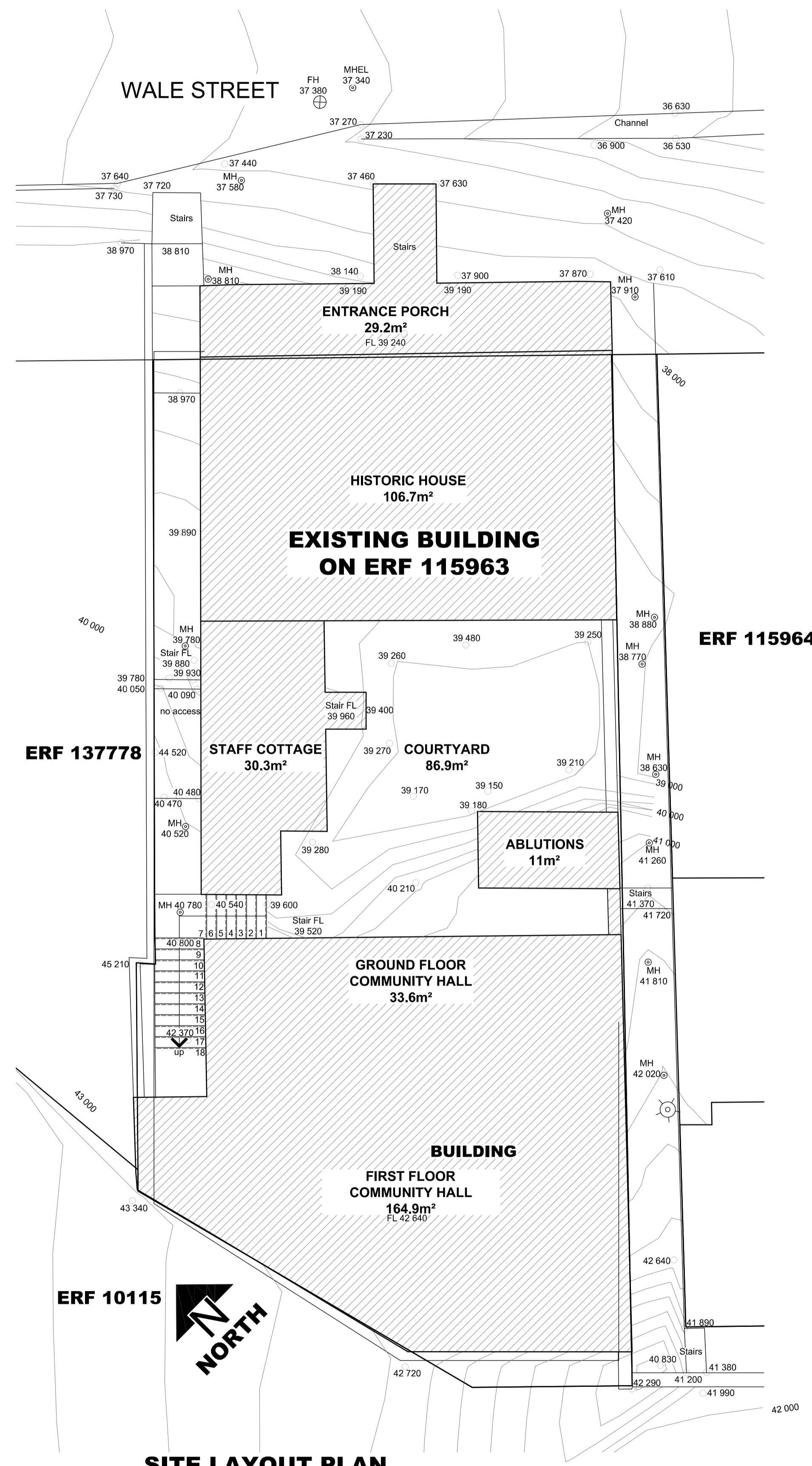


ROOF PLAN
1:100



SITE LAYOUT PLAN
1:100

GENERAL NOTES
This document is the property of the FC Holm Architects CC and may not be reproduced, issued or used for any other than the specific purpose for which it was originally intended.
All materials and construction methods must comply with the National Building Regulations and all SANS 10400 (including all amendments) as well as all by-laws of the relevant local authority.
All materials and equipment must be fixed and finished off in accordance with the specifications of the manufacturer of such materials and equipment.
All dimensions must be checked on site. Any discrepancies or discrepancies must be pointed out to the principal agent for modification or confirmation before work is taken from hand.
Refer to the general specifications for material and methods for this project.
Never scale from this drawing.
Statutory information obtained from Mossel Bay Town Planning Department.

AREA'S

ENTRANCE PORCH	29.2m ²
MAIN MUSEUM	106.7m ²
STAFF COTTAGE	30.3m ²
COURTYARD	86.9m ²
ABLUTIONS	11m ²
COMMUNITY HALL GROUND	33.6m ²
COMMUNITY HALL FIRST	164.9m ²
TOTAL	462.6m²



IZIKO MUSEUMS OF SOUTH AFRICA
BO-KAAP MUSEUM

AS BUILT
SITE AND ROOF PLAN

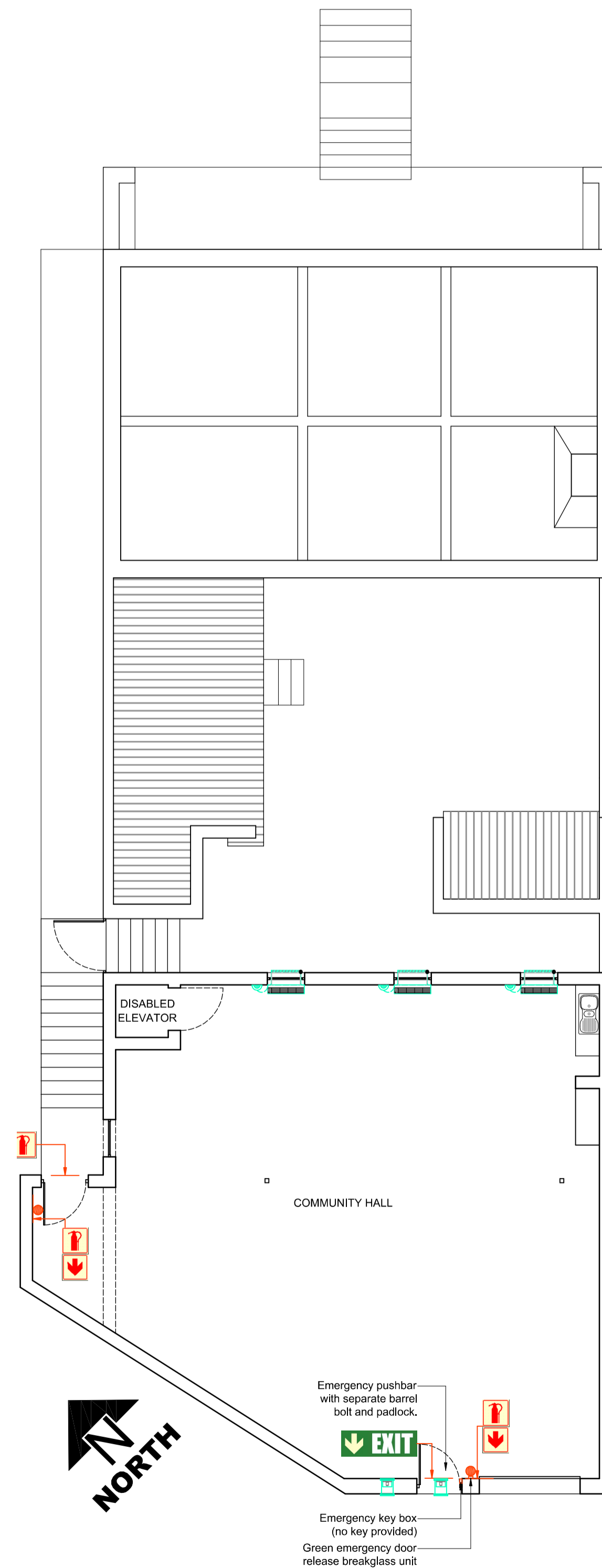
scale	drawn
as shown	linea
date	checked
30/09/2016	ad
drawing no.	revision
16006/B/AB/1001	000

FIRE DETECTION AND MECHANICAL LEGEND	
	Console air conditioning unit
	Indoor air conditioning unit (midwall)
	Outdoor condensing unit
	9kg DCP Type fire extinguisher
	5kg CO2 Type fire extinguisher
	Fire hose reel with 30m hose
	optical smoke detector (room void)
	optical smoke detector fitted with sounder base
	manual call point containing break glass element mounted 1400mm affl.
	fire detection panel
	siren unit (red)

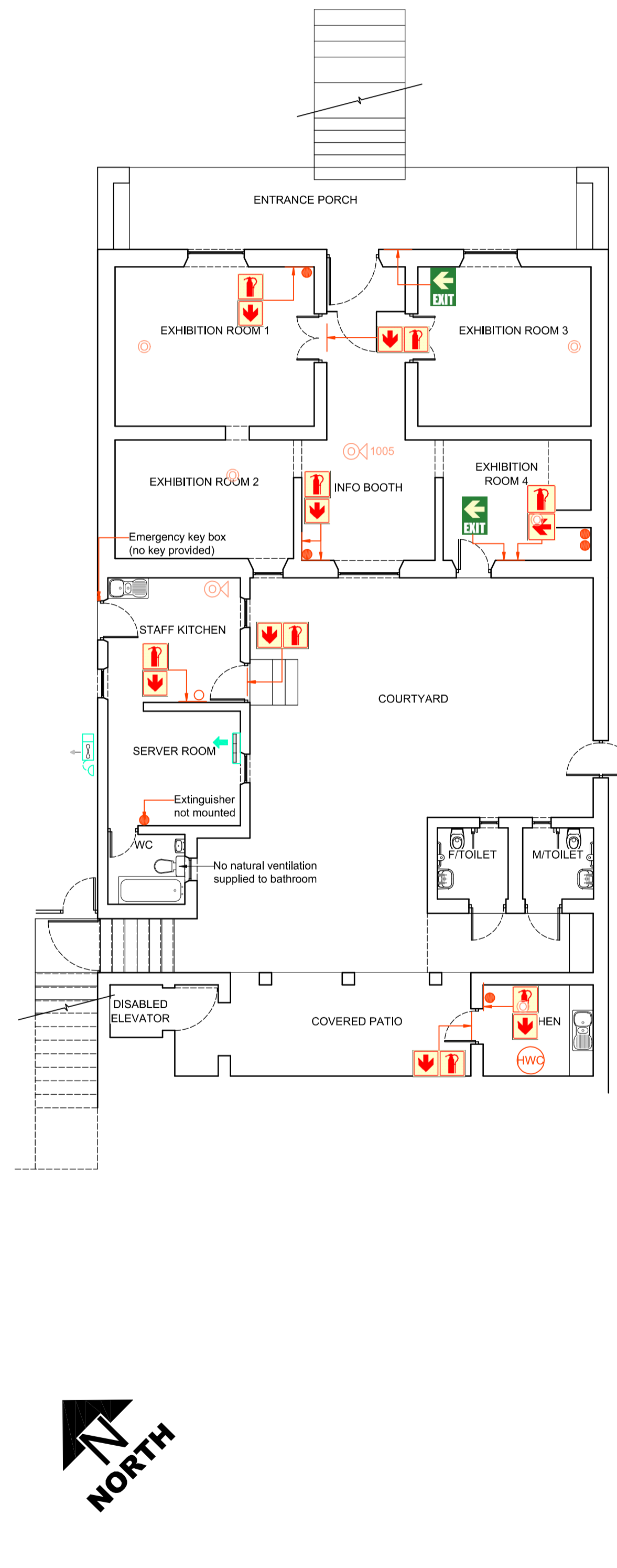
ELECTRICAL LIGHTING LEGEND	
	Type B Existing wall mounted bulkhead IP66 rated round / rectangular bulkhead.
	Type L Existing external lantern to be removed and re-furbished.
	Type D1 Replacement led lamps (4000k natural white).
	Type D2 Recess compact fluorescent downlight
	Two lever light switch at 1150mm affl to centre
	Single lever 2-way light switch at 1150mm affl to centre.
	Single lever 1way dimmable light switch at 1150mm affl to centre.
	Two lever 1way + 2way light switch at 1150mm affl to centre.
	A/C controller 4x4 box at 1450mm affl. to centre of box with 25mmØ pvc conduit into ceiling space.
	41mm x 41mm trunking
	Type F1 2 x 50w cool white T8 open channel fluorescent light fitting
	Type F3 2 x 36w cool white T8 open channel fluorescent light fitting
	Type B Existing ceiling mounted bulkhead IP66 rated round bulkhead.
	Type CH Existing chandelier to be removed, cleaned and re-cabled
	Existing light fitting to be relamped with compact fluorescent lamp
	Single lever light switch at 1150mm affl to centre
	Three lever light switch at 1150mm affl to centre
	Two lever 2-way light switch at 1150mm affl to centre.
	Two lever 1way dimmable light switch at 1150mm affl to centre.
	Motion detector
	6 amp unswitched socket outlet
	Draw box
	Type F2 2 x 50w cool white T8 surface fluorescent fitting with prismatic acrylic diffuser
	Type N1 Existing IP66 rated flood light

ELECTRICAL POWER LEGEND	
	16A single 3-pin sso flush in wall at 300mm affl or in power skirting unless otherwise shown.
	16A double 3-pin sso flush in wall at 300mm affl unless otherwise shown.
	UPS single socket outlet
	UPS double socket outlet
	Existing 16A double 3-pin dedicated sso flush in wall at 300mm affl unless otherwise shown.
	Existing 16A single 3-pin dedicated sso flush in wall at 300mm affl or in power skirting unless otherwise shown.
	New switched socket outlet featuring combination 3-pin socket outlet & 2-pin socket outlet.
	10A double 2-pin sso flush in wall at 300mm affl. unless otherwise shown or in power skirting.
	DP isolator with rating as shown
	DP switched isolator with rating as shown
	63A DP isolator complete with 20mmØ conduit link to 60mmØ round box at 600mm affl.
	Mounted in ceiling space unless otherwise shown
	IP65 rated unless otherwise indicated
	16A single 3-pin normal sso in power skirting.
	16A single 3-pin dedicated sso in power skirting.
	Existing single socket outlet
	Existing double socket outlet
	Telephone point on powerskirting or 300mm affl unless otherwise shown
	Dual data-tel outlet fitted with I45 cat6 outlet, 100x100x50 flush box in wall at 300mm affl or in powerskirting or as specified
	Data point on powerskirting or 300mm affl unless otherwise shown
	TV point
	TP isolator with rating as shown
	TP switched isolator with rating as shown
	Floorbox
	Electrical DB

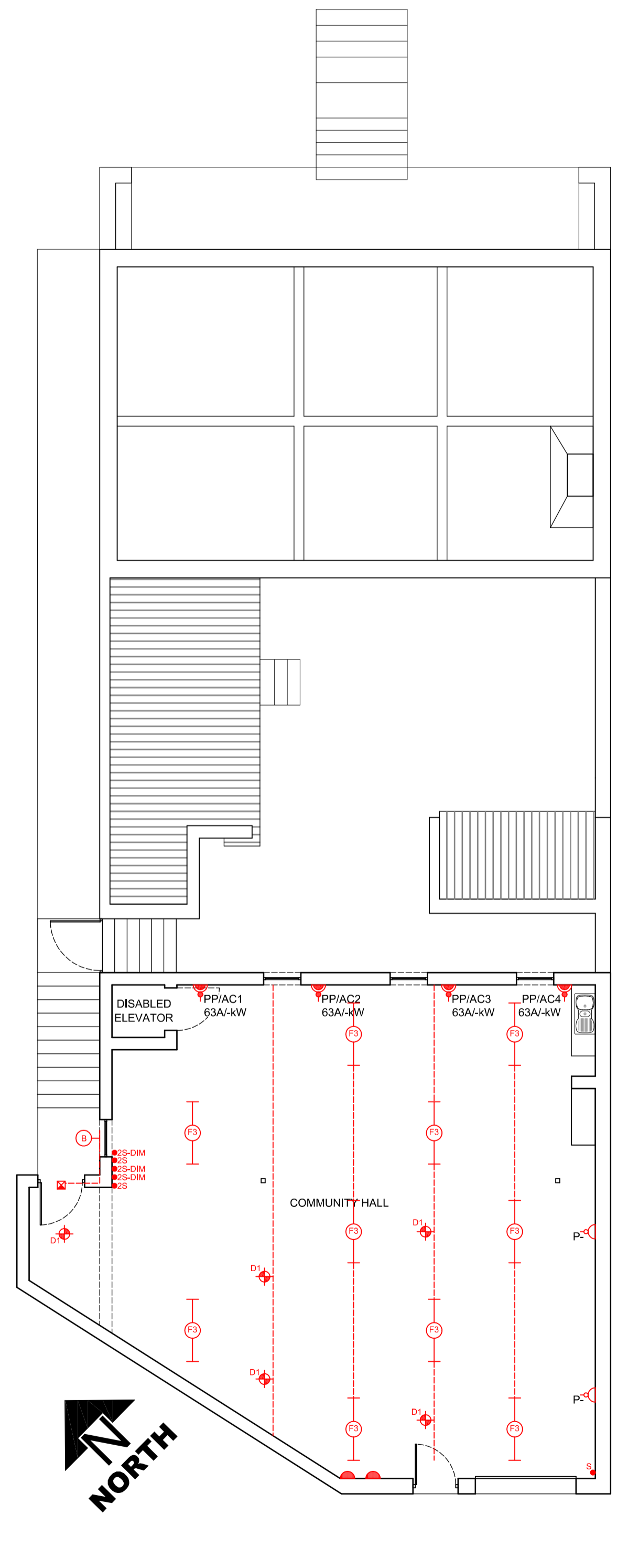
GENERAL NOTES
 This document is the property of the FC and Architects CC and may not be reproduced, loaned or used for any other than the specific purpose for which it was originally intended.
 All materials and construction methods must comply with the National Building Regulations and all 102 or 107 (including all amendments) as well as all by-laws of the relevant local authority.
 All materials and equipment must be fixed and finished off in accordance with the specifications of the manufacturer of such materials and equipment.
 All dimensions must be checked on site. Any inaccuracy or discrepancy must be pointed out to the principal agent for modification or clarification before work is taken from level.
 Refer to the general specifications for material and methods for this project.
 Never scale from this drawing.
 Statutory information obtained from Mossel Bay Town Planning Department.



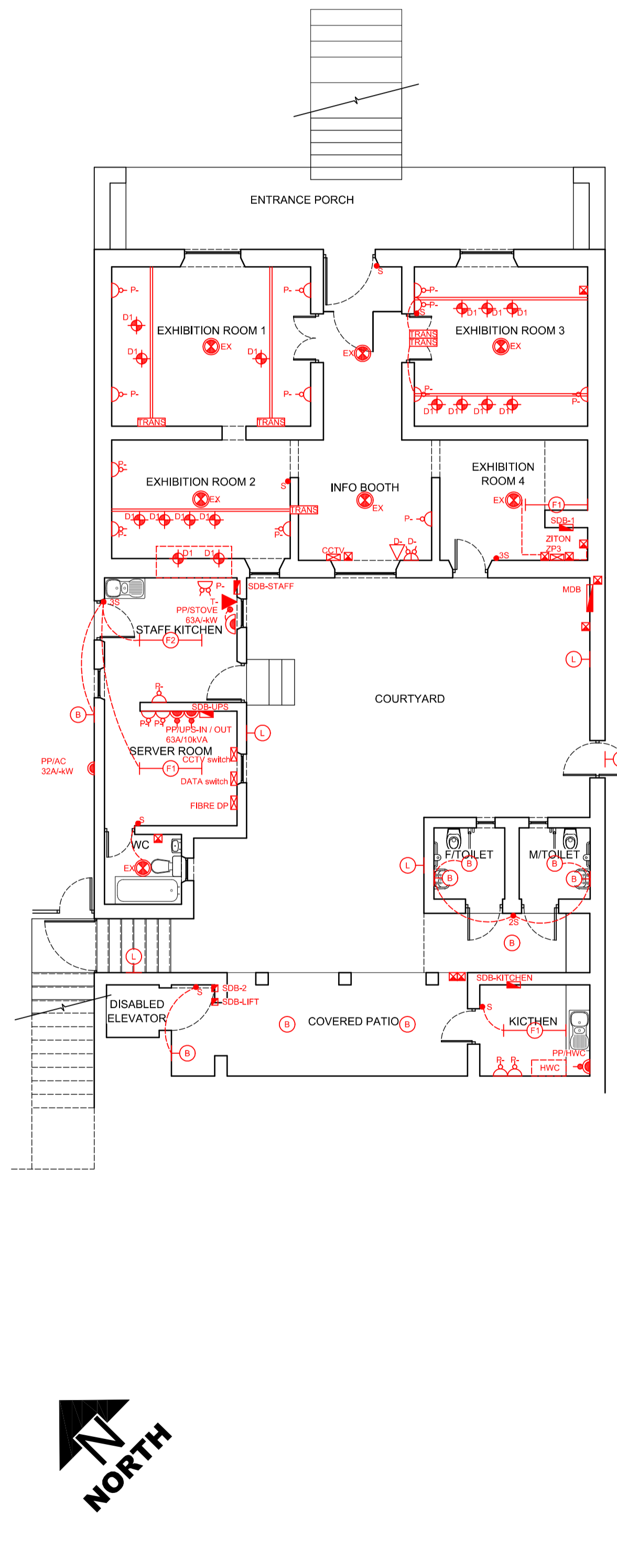
FIRST STOREY FIRE DETECTION AND MECHANICAL SERVICES LAYOUT
 1:100



GROUND STOREY FIRE DETECTION AND MECHANICAL SERVICES LAYOUT
 1:100



FIRST STOREY ELECTRICAL POWER AND LIGHTING LAYOUT
 1:100



GROUND STOREY ELECTRICAL POWER AND LIGHTING LAYOUT
 1:100



IZIKO MUSEUMS OF SOUTH AFRICA
BO-KAAP MUSEUM
AS BUILT
FIRE, MECHANICAL & ELECTRICAL SERVICES

scale	drawn
as shown	linea
date	checked
30/09/2016	ad
drawing no.	revision
16006/B/AB/1102	000

FIRE DETECTION AND MECHANICAL LEGEND	
	Console air conditioning unit
	Indoor air conditioning unit (midwall)
	Outdoor condensing unit
	9kg DCP Type fire extinguisher
	5kg CO2 Type fire extinguisher
	Fire hose reel with 30m hose
	optical smoke detector (room void)
	optical smoke detector fitted with sounder base
	manual call point containing break glass element mounted 1400mm affl.
	fire detection panel
	siren unit (red)

ELECTRICAL LIGHTING LEGEND	
	Type B Existing wall mounted bulkhead IP66 rated round / rectangular bulkhead.
	Type L Existing external lantern to be removed and re-furbished.
	Type D1 Replacement led lamps (4000k natural white).
	Type D2 Recess compact fluorescent downlight
	Two lever light switch at 1150mm affl to centre
	Single lever 2-way light switch at 1150mm affl to centre.
	Single lever 1way dimmable light switch at 1150mm affl to centre.
	Two lever 1way + 2way light switch at 1150mm affl to centre.
	A/C controller 4x4 box at 1450mm affl, to centre of box with 25mmØ pvc conduit into ceiling space.
	41mm x 41mm trunking
	Type F1 2 x 56w cool white T8 open channel fluorescent light fitting
	Type F3 2 x 36w cool white T8 open channel fluorescent light fitting
	Type B Existing ceiling mounted bulkhead IP66 rated round / rectangular bulkhead.
	Type CH Existing chandelier to be removed, cleaned and re-cabled
	Existing light fitting to be replaced with compact fluorescent lamp
	Single lever light switch at 1150mm affl to centre
	Three lever light switch at 1150mm affl to centre
	Two lever 2-way light switch at 1150mm affl to centre.
	Two lever 1way dimmable light switch at 1150mm affl to centre.
	Motion detector
	6 amp unswitched socket outlet
	Draw box
	Type F2 2 x 56w cool white T8 surface fluorescent with prismatic acrylic diffuser
	Type N1 Existing IP66 rated flood light

ELECTRICAL POWER LEGEND	
	16A single 3-pin sso flush in wall at 300mm affl or in power skirting unless otherwise shown
	16A double 3-pin sso flush in wall at 300mm affl unless otherwise shown.
	UPS single socket outlet
	UPS double socket outlet
	Existing 16A double 3-pin dedicated sso flush in wall at 300mm affl unless otherwise shown.
	Existing 16A single 3-pin dedicated sso flush in wall at 300mm affl or in power skirting unless otherwise shown.
	New switched socket outlet featuring combination 3-pin socket outlet & 2-pin socket outlet.
	10A double 2-pin sso flush in wall at 300mm affl, unless otherwise shown or in power skirting.
	DP isolator with rating as shown
	DP switched isolator with rating as shown
	63A DP isolator complete with 20mmØ conduit link to 60mmØ round box at 600mm affl.
	Mounted in ceiling space unless otherwise shown
	IP65 rated unless otherwise indicated
	16A single 3-pin normal sso in power skirting.
	16A single 3-pin dedicated sso in power skirting.
	Existing single socket outlet
	Existing double socket outlet
	Telephone point on powerskirting or 300mm affl unless otherwise shown
	Dual data-tel outlet fitted with #45 cat6 outlet, 100x100x50 flush box in wall at 300mm affl or in powerskirting or as specified
	Data point on powerskirting or 300mm affl unless otherwise shown
	TV point
	TP isolator with rating as shown
	TP switched isolator with rating as shown
	Floorbox
	Electrical DB

GENERAL NOTES

This document is the property of the FC Holder Architects CC and may not be reproduced, loaned or used for any other than the specific purpose for which it was originally intended.

All materials and construction methods must comply with the National Building Regulations and all 102 or 107 (including all amendments) as well as all by-laws of the relevant local authority.

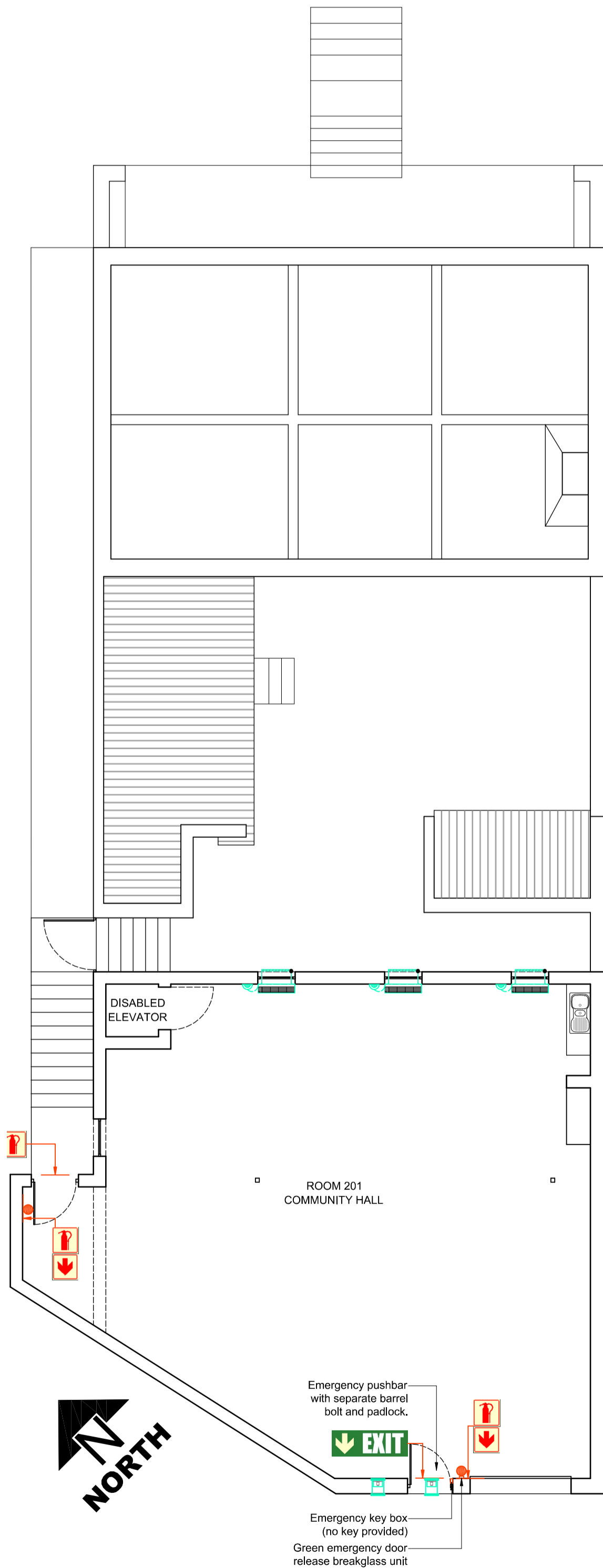
All materials and equipment must be fixed and finished off in accordance with the specifications of the manufacturer of such materials and equipment.

All dimensions must be checked on site. Any inaccuracy or discrepancy must be pointed out to the principal agent for modification or clarification before work is taken from level.

Refer to the general specifications for materials and methods for this project.

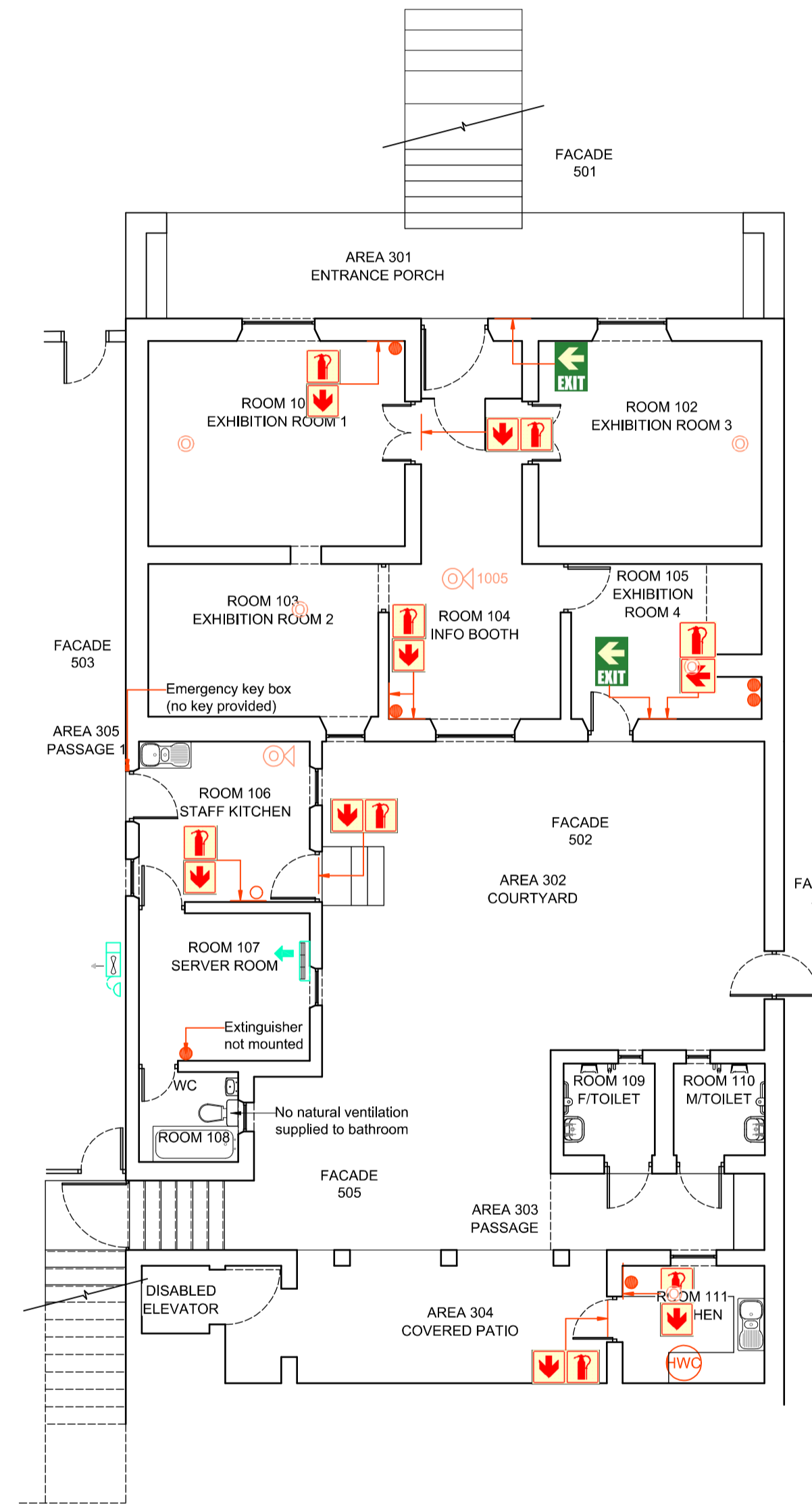
Never scale from this drawing.

Statutory information obtained from Mossel Bay Town Planning Department.



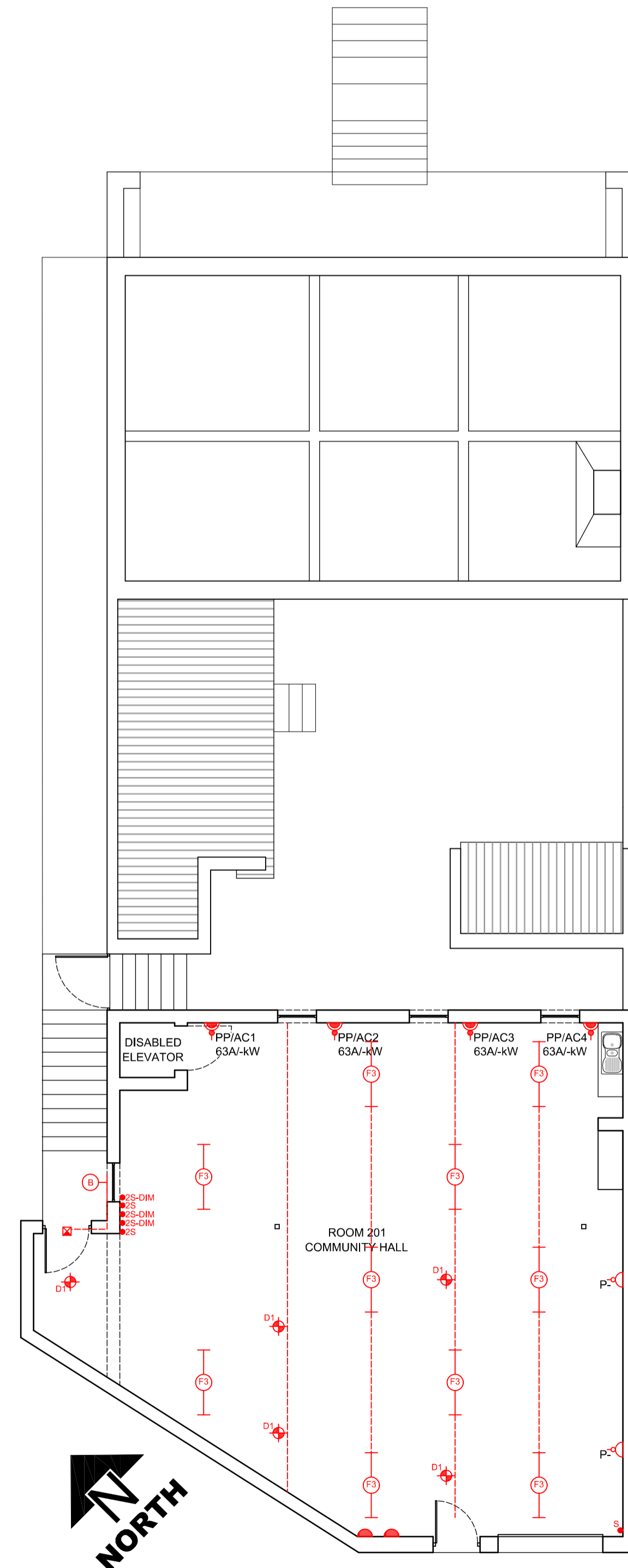
FIRST STOREY FIRE DETECTION AND MECHANICAL SERVICES LAYOUT

1:100



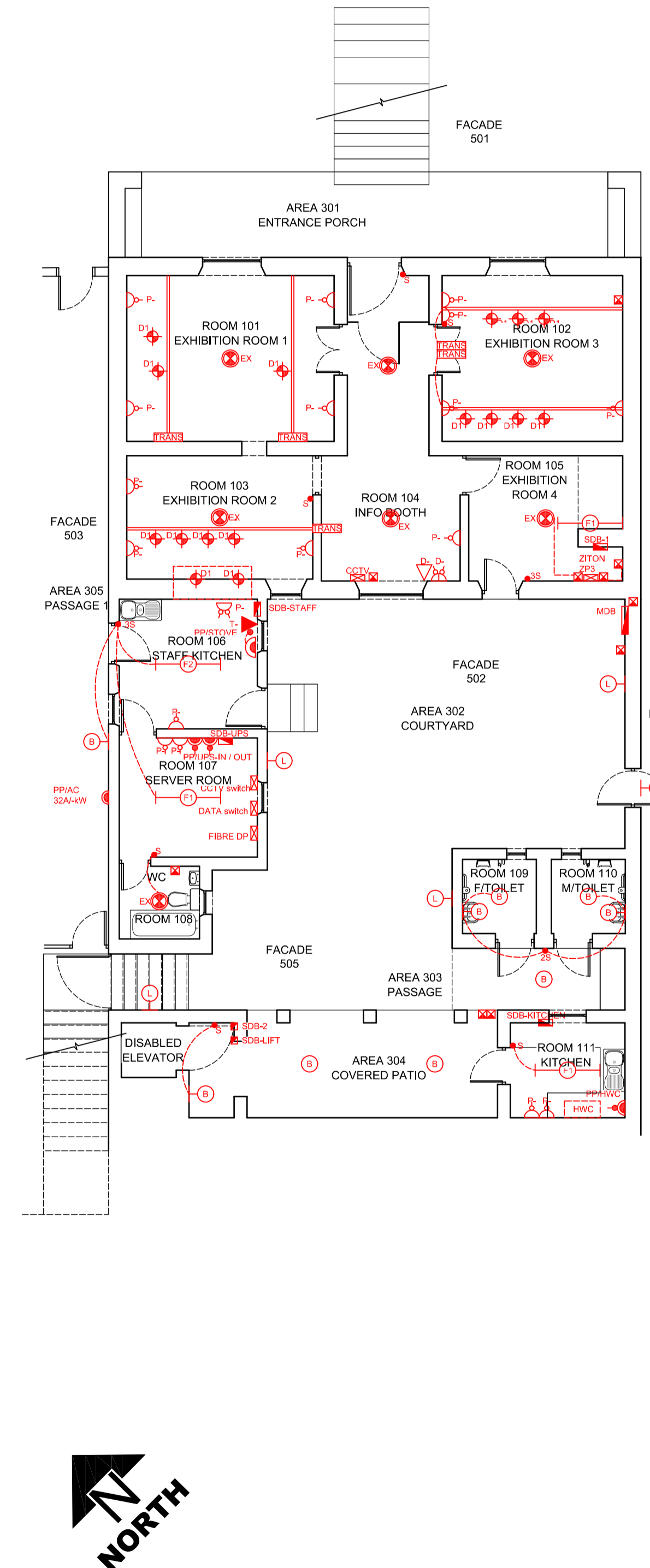
GROUND STOREY FIRE DETECTION AND MECHANICAL SERVICES LAYOUT

1:100



FIRST STOREY ELECTRICAL POWER AND LIGHTING LAYOUT

1:100



GROUND STOREY ELECTRICAL POWER AND LIGHTING LAYOUT

1:100



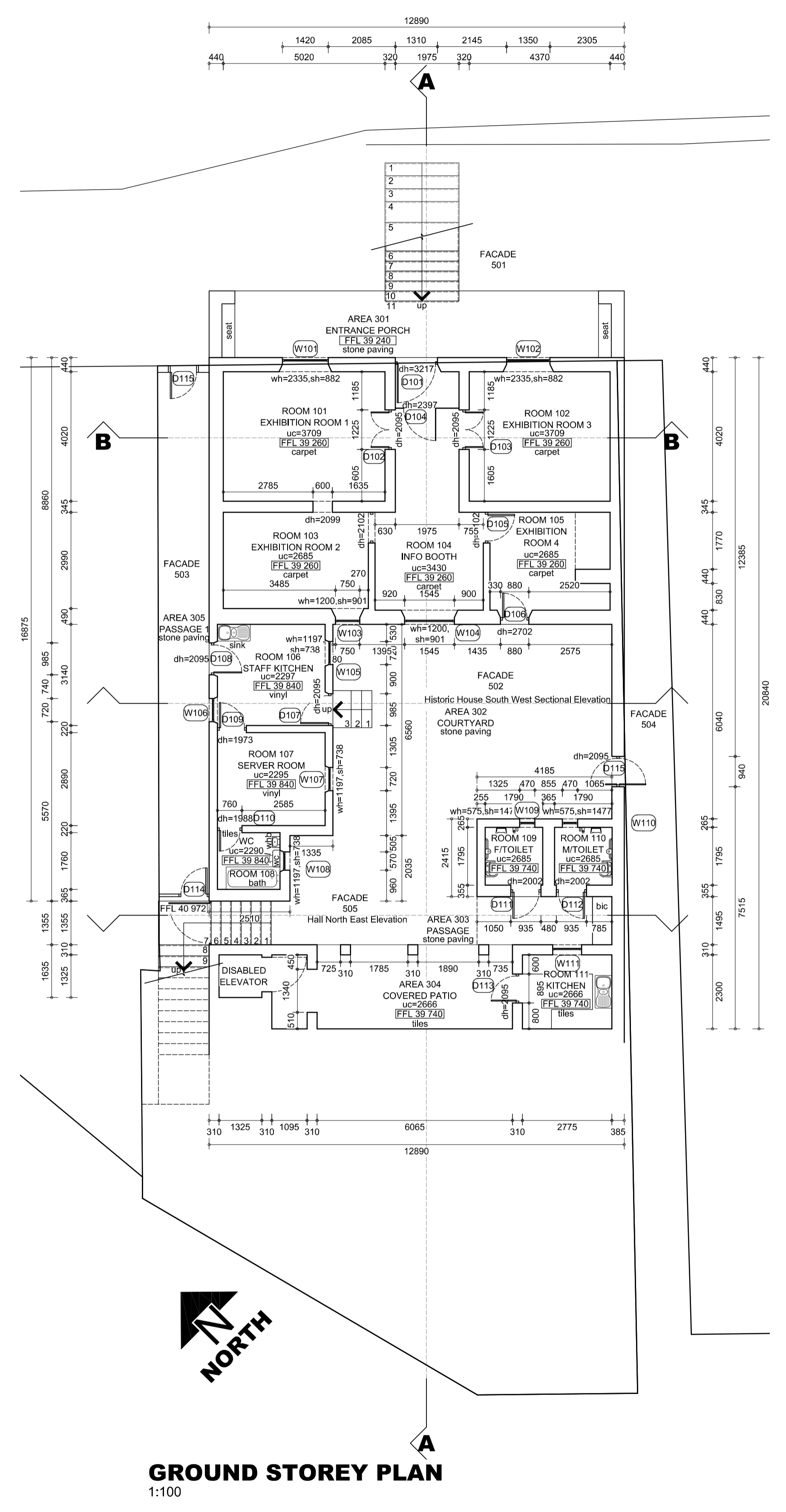
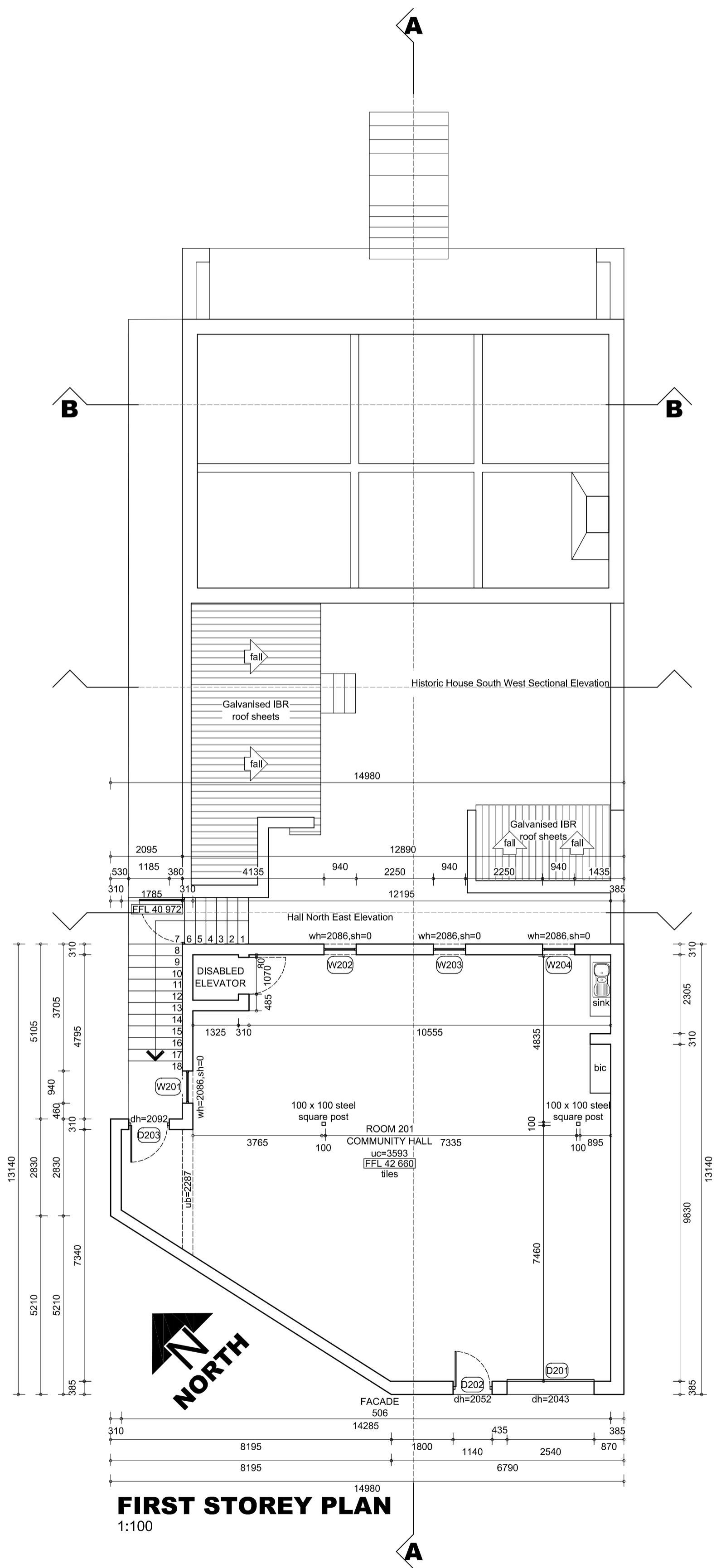
project

IZIKO MUSEUMS OF SOUTH AFRICA BO-KAAP MUSEUM

drawing

AS BUILT FIRE, MECHANICAL & ELECTRICAL SERVICES

scale	drawn
as shown	linea
date	checked
30/09/2016	ad
drawing no.	revision
16006/B/AB/1102	000



GENERAL NOTES

This document is the property of the FC Holm Architects CC and may not be reproduced, issued or used for any other than the specific purpose for which it was originally intended.

All materials and construction methods must comply with the National Building Regulations and all SANS 10400 (including all amendments) as well as all by-laws of the relevant local authority.

All materials and equipment must be fixed and finished off in accordance with the specifications of the manufacturer of such materials and equipment.

All dimensions must be checked on site. Any inaccuracy or discrepancy must be pointed out to the principal agent for rectification or confirmation before work is taken from hand.

Refer to the general specifications for materials and methods for this project.

Never scale from this drawing.

Statutory information obtained from Mozambique Bay Town Planning Department.

AREA'S

ENTRANCE PORCH	29.2m ²
MAIN MUSEUM	106.7m ²
STAFF COTTAGE	30.3m ²
COURTYARD	86.9m ²
ABLUTIONS	11m ²
COMMUNITY HALL GROUND	33.6m ²
COMMUNITY HALL FIRST	164.9m ²
TOTAL	462.6m²



FC HOLM
ARCHITECTS
LANDSCAPE ARCHITECTS

044 874 1806
info@fchohm.co.za
PO Box 9457
GEORGE
6530

HOLM JORDAAN GROUP
ARCHITECTS
URBAN DESIGNERS

MEAGO | GWA | EUROPE | AFRICA

cmb

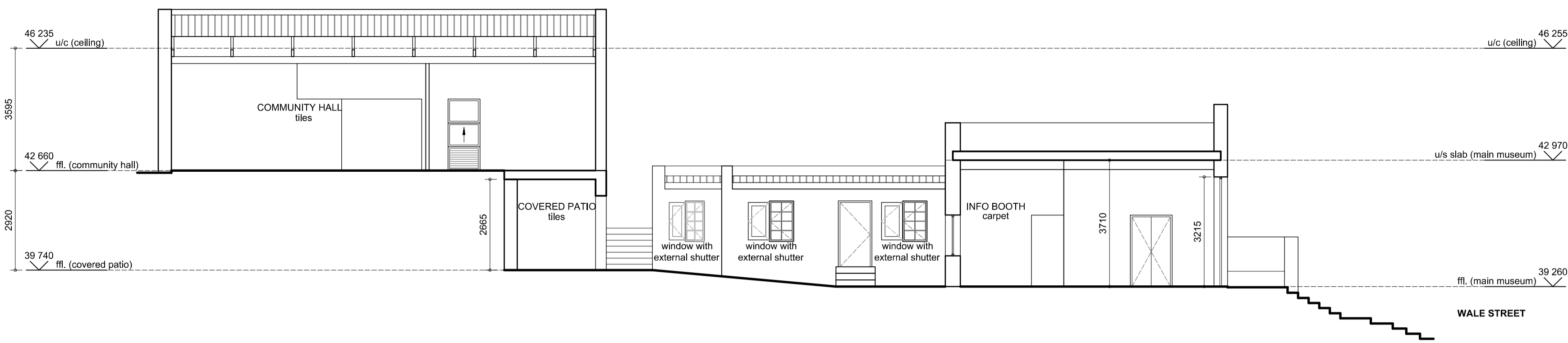
2nd Floor, Office 203
Edwards Building
75 Gilman Road
Sikhilele 7530
Tel: +27 21 911 2006
Fax: +27 21 413 9428
cmb@cmb.co.za
www.cmb.co.za

PORT ELIZABETH EAST LONDON CAPE TOWN GEORGE WINDHOEK
CLINICALS MAUGHAN-BROWN PTY LTD (2003/102267)

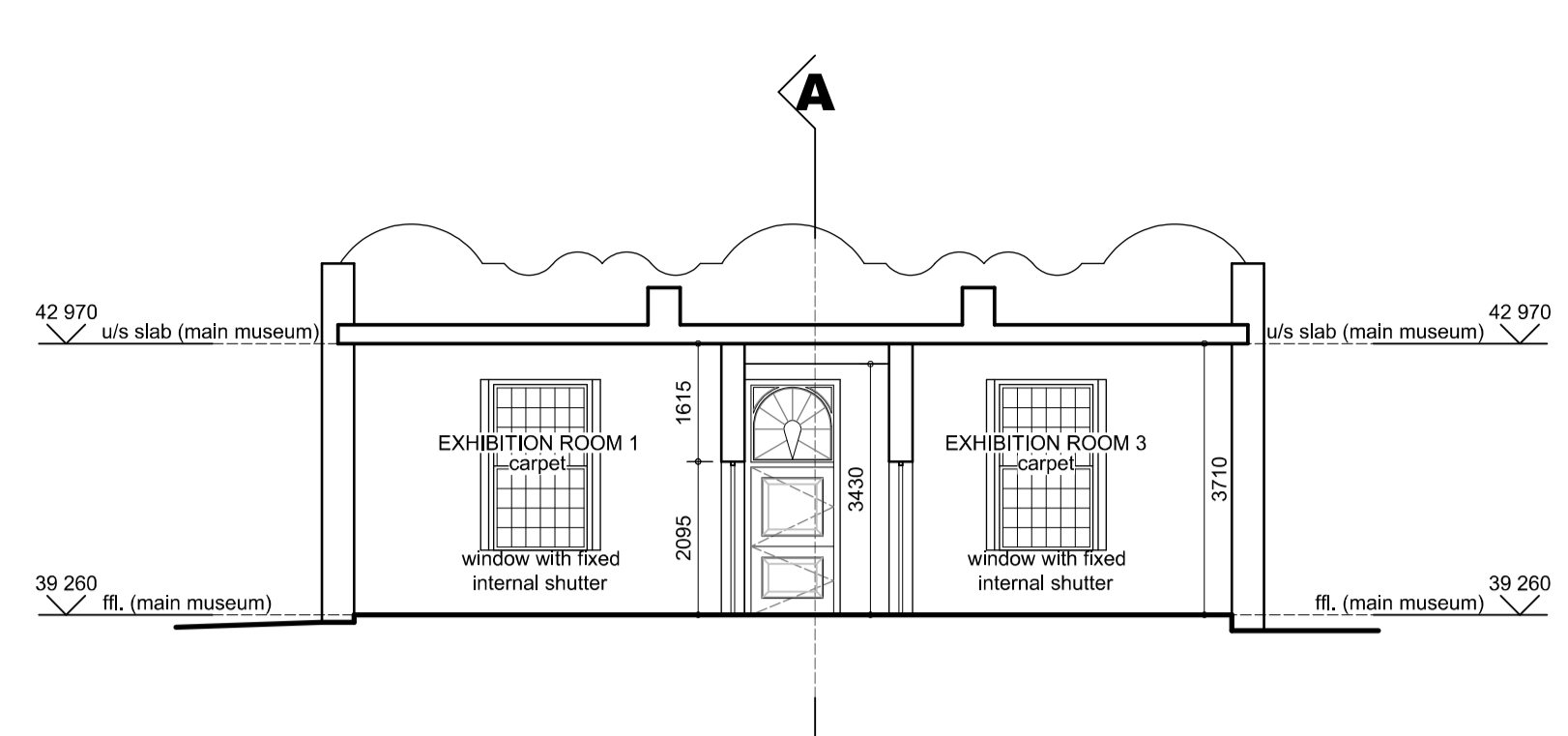
IZIKO MUSEUMS OF SOUTH AFRICA BO-KAAP MUSEUM

AS BUILT STOREY LAYOUT PLANS

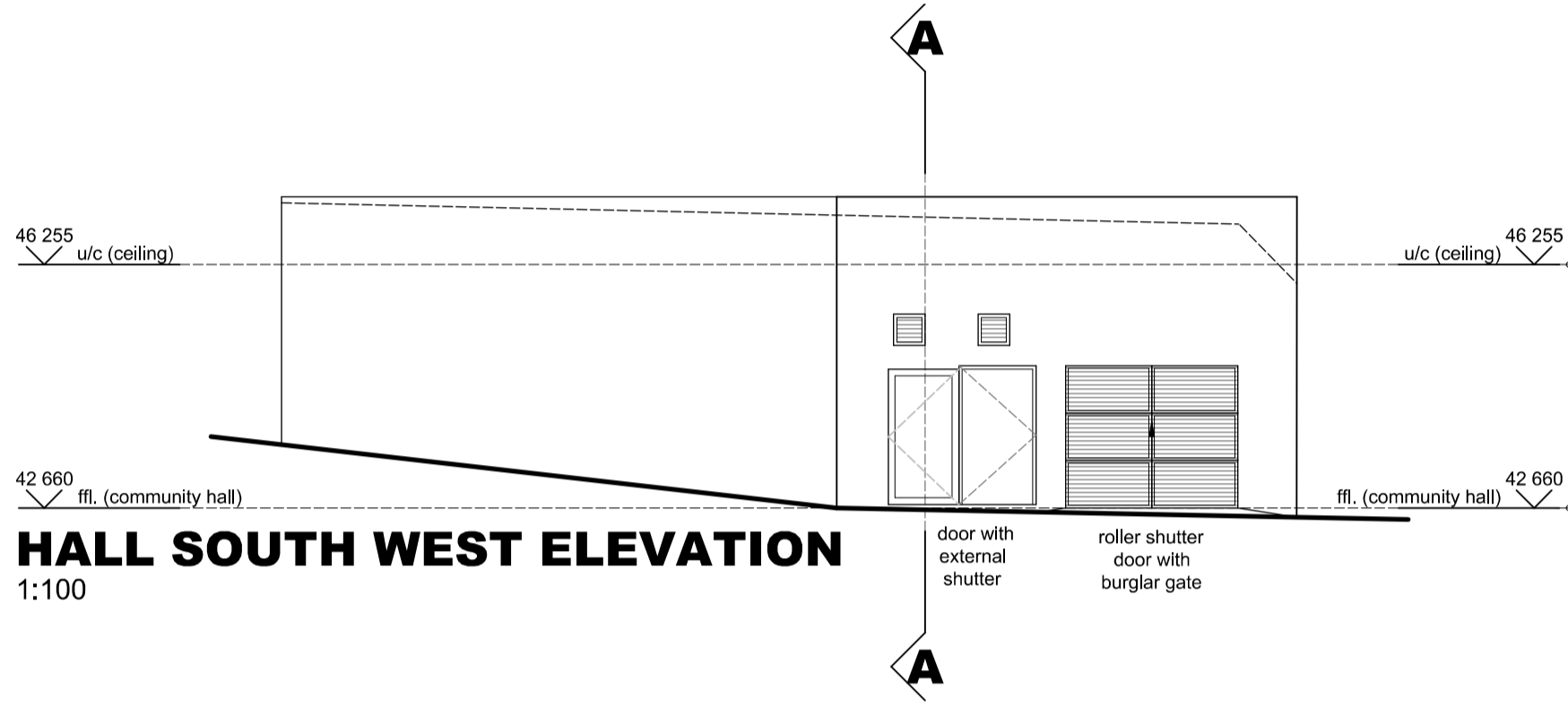
scale	drawn
as shown	linea
date	checked
30/09/2016	ad
drawing no.	revision
16006/B/AB/1101	000



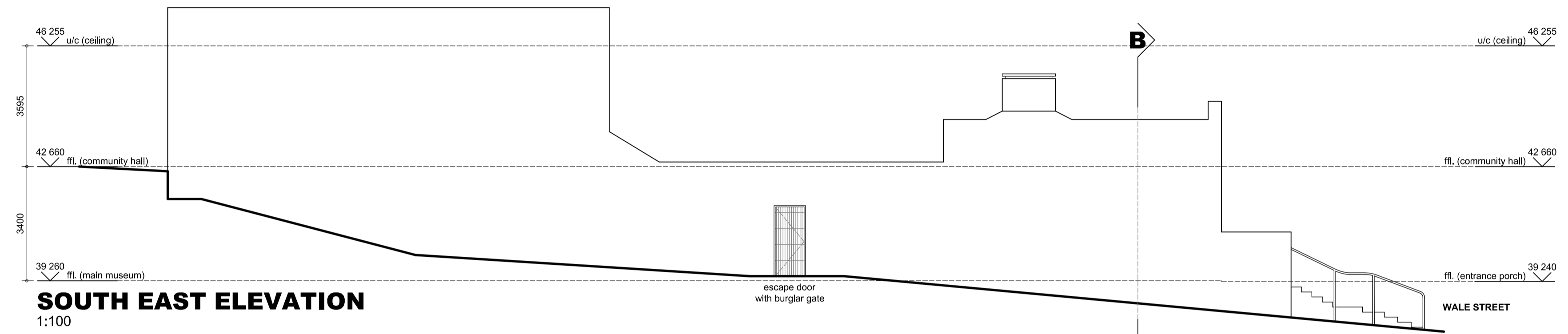
SECTION A-A
1:100



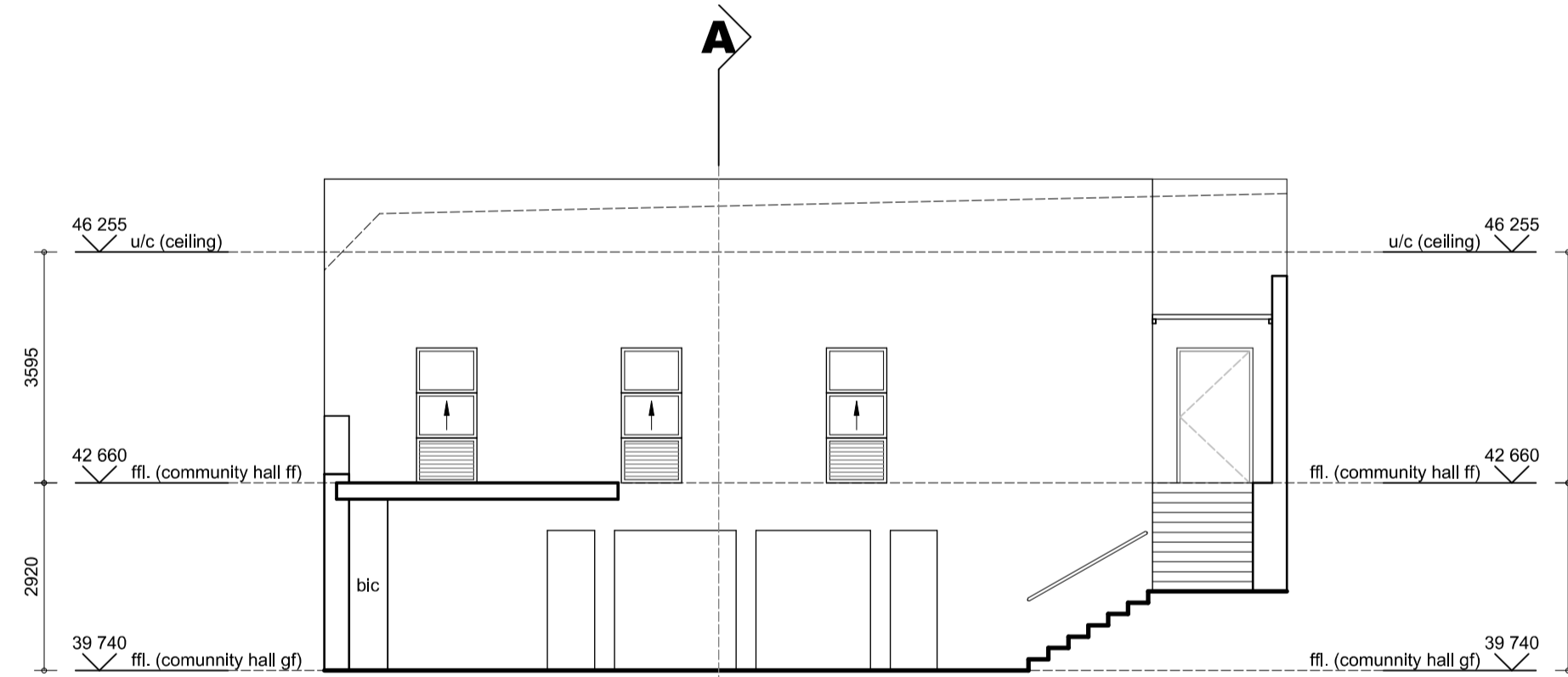
SECTION B-B
1:100



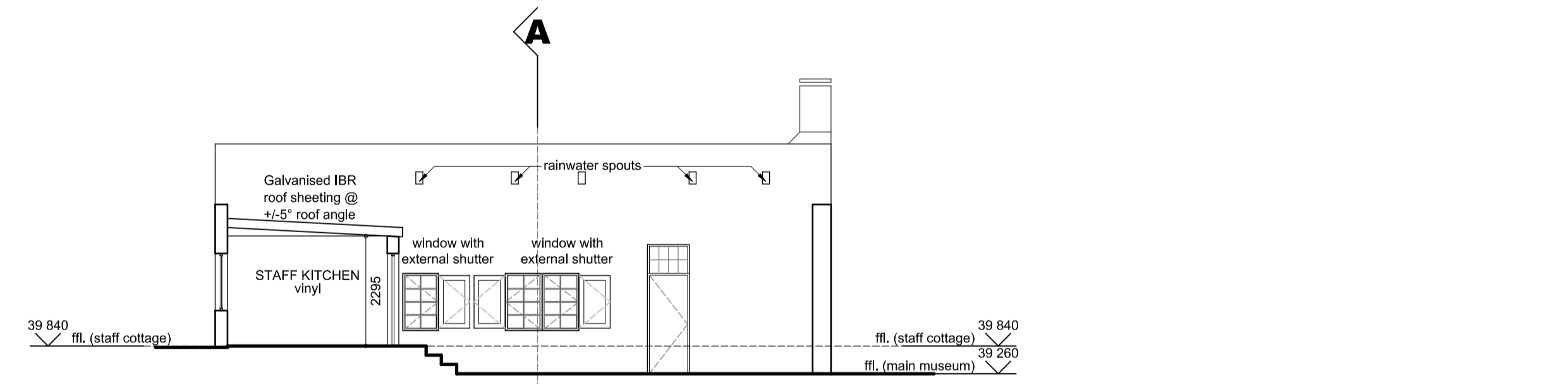
HALL SOUTH WEST ELEVATION
1:100



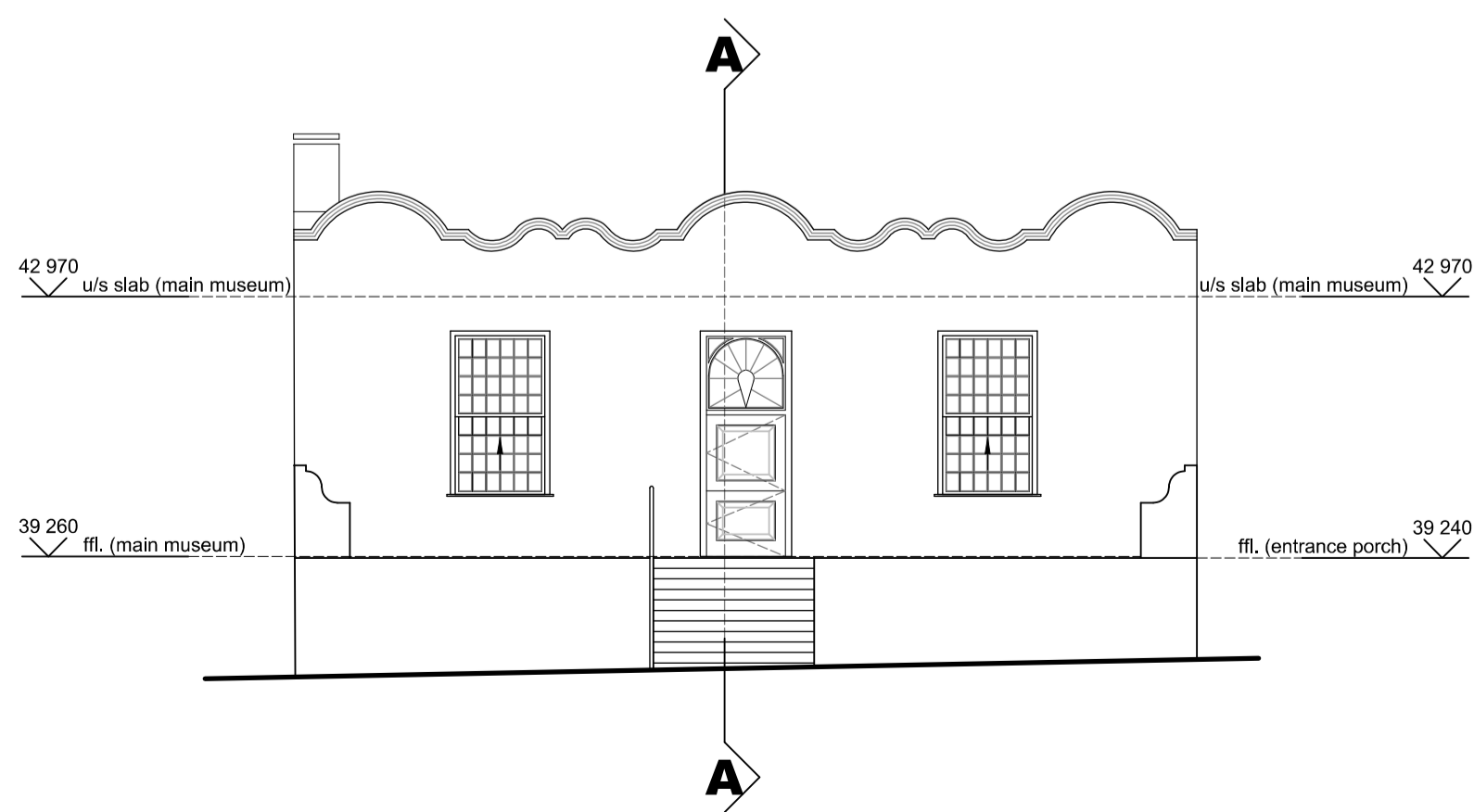
SOUTH EAST ELEVATION
1:100



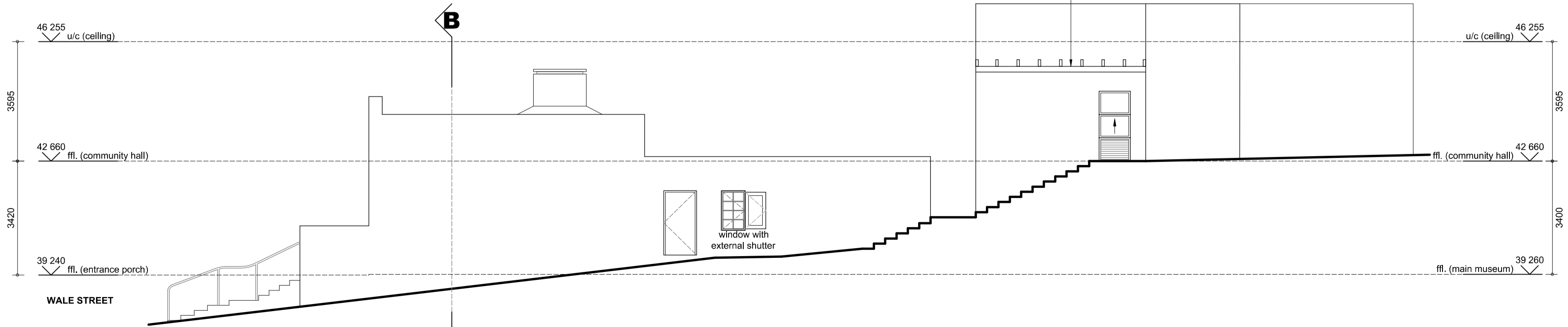
HALL NORTH EAST ELEVATION
1:100



MUSEUM SOUTH WEST SECTIONAL ELEVATION
1:100



MUSEUM NORTH EAST ELEVATION
1:100



NORTH WEST ELEVATION
1:100

GENERAL NOTES
This document is the property of the IC-Team Architects CC and may not be reproduced, loaned or used for any other than the specific purpose for which it was originally intended.
All materials and construction methods must comply with the National Building Regulations and all SANS 10400 (including all amendments) as well as all by-laws of the relevant local authority.
All materials and equipment must be fixed and finished off in accordance with the specifications of the manufacturer of such materials and equipment.
All dimensions must be checked on site. Any discrepancies or omissions must be pointed out to the principal agent for rectification or confirmation before work is taken from hand.
Refer to the general specifications for materials and methods for this project.
Never scale from this drawing.
Statutory information obtained from Mossel Bay Town Planning Department.



IZIKO MUSEUMS OF SOUTH AFRICA BO-KAAP MUSEUM

AS BUILT SECTIONS AND ELEVATIONS

scale	drawn
as shown	linea
date	checked
30/09/2016	ad
drawing no.	revision
16006/B/AB/1201	000