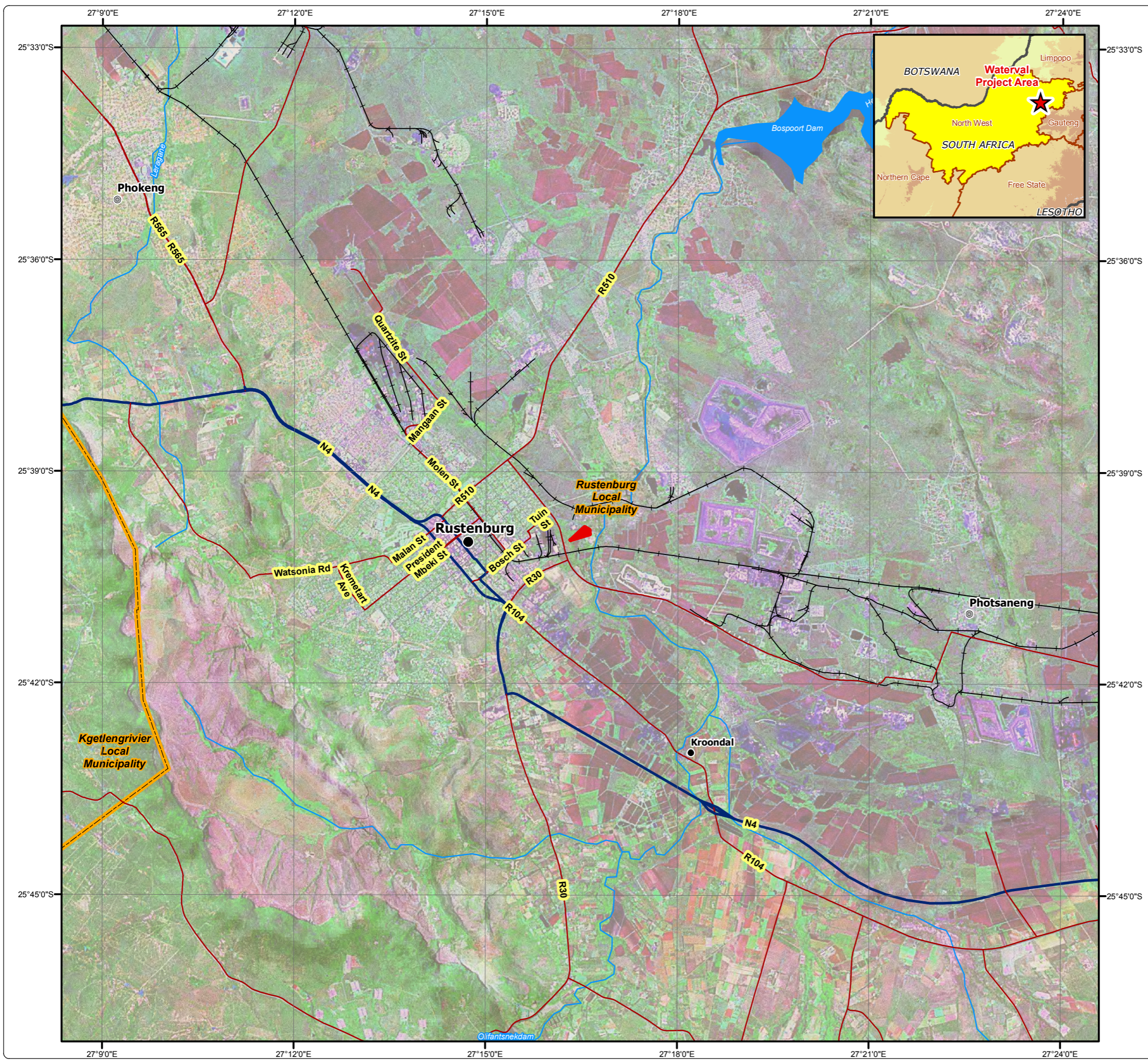


Rustenburg Platinum Mines

Regional Setting

Legend

- Waterval Project Area
- Major Town
- Other Town
- Settlement
- Main Road
- National Road
- Railway Line
- River
- Dam
- Local Municipal Boundary



DIGBY WELLS
ENVIRONMENTAL

• Sustainability • Service • Positive Change • Professionalism • Future Focused • Integrity

Projection: Transverse Mercator Ref #: scm.APM3249.201504.029
Datum: WGS 1984 Revision Number: 1
Central Meridian: 27°E Date: 08/04/2015

