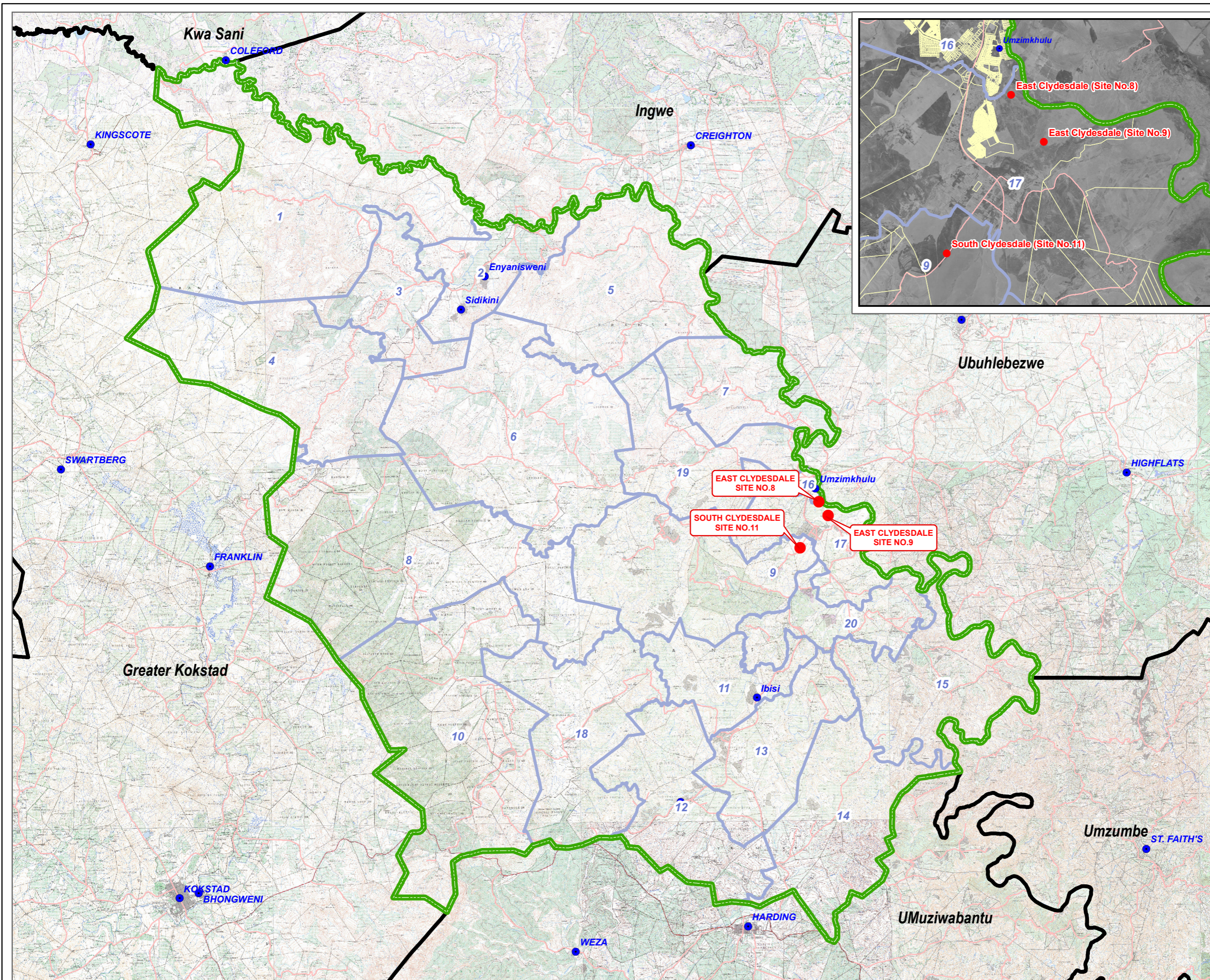
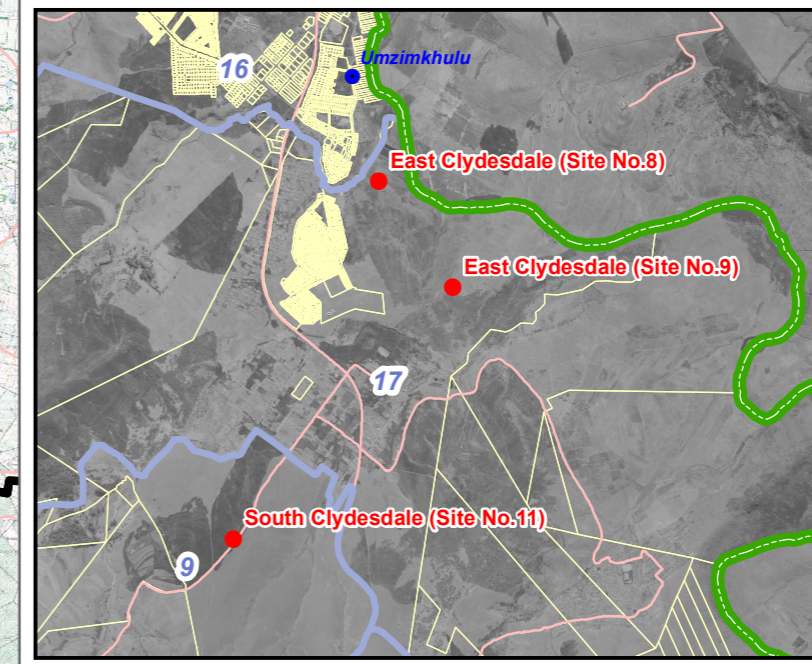


**UMZIMKHULU LM
LANDFILL SITE**

Legend

- LANDFILL SITES
- PLACENAMES
- DOT ROADS
- WARDS
- LOCAL MUNICIPALITY
- MUNICIPALITY BOUNDARY




Environmental Consultant:

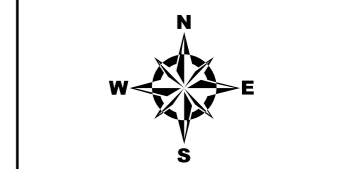
ZINGWE CONSULTANCY
 Environmental & Safety Planners

06 Staffordshire Place
 117 Marine Drive
 Shelly Beach, 4265

 Tel No.: 039 3157751
 Fax No.: 039 3156737

GIS Map:

Fuze Geomatics
 Geographic Information Systems

 Tel No.: 039 3151586
 Cell No.: 072 6191691



**UMzimkhulu District
Municipality**

Title: Landfill Sites Locality

Projection: WGS 84 (WG31)

Scale: 1: 8,500 Date: 02 September 2013