

APPENDIX A1 - MAPS

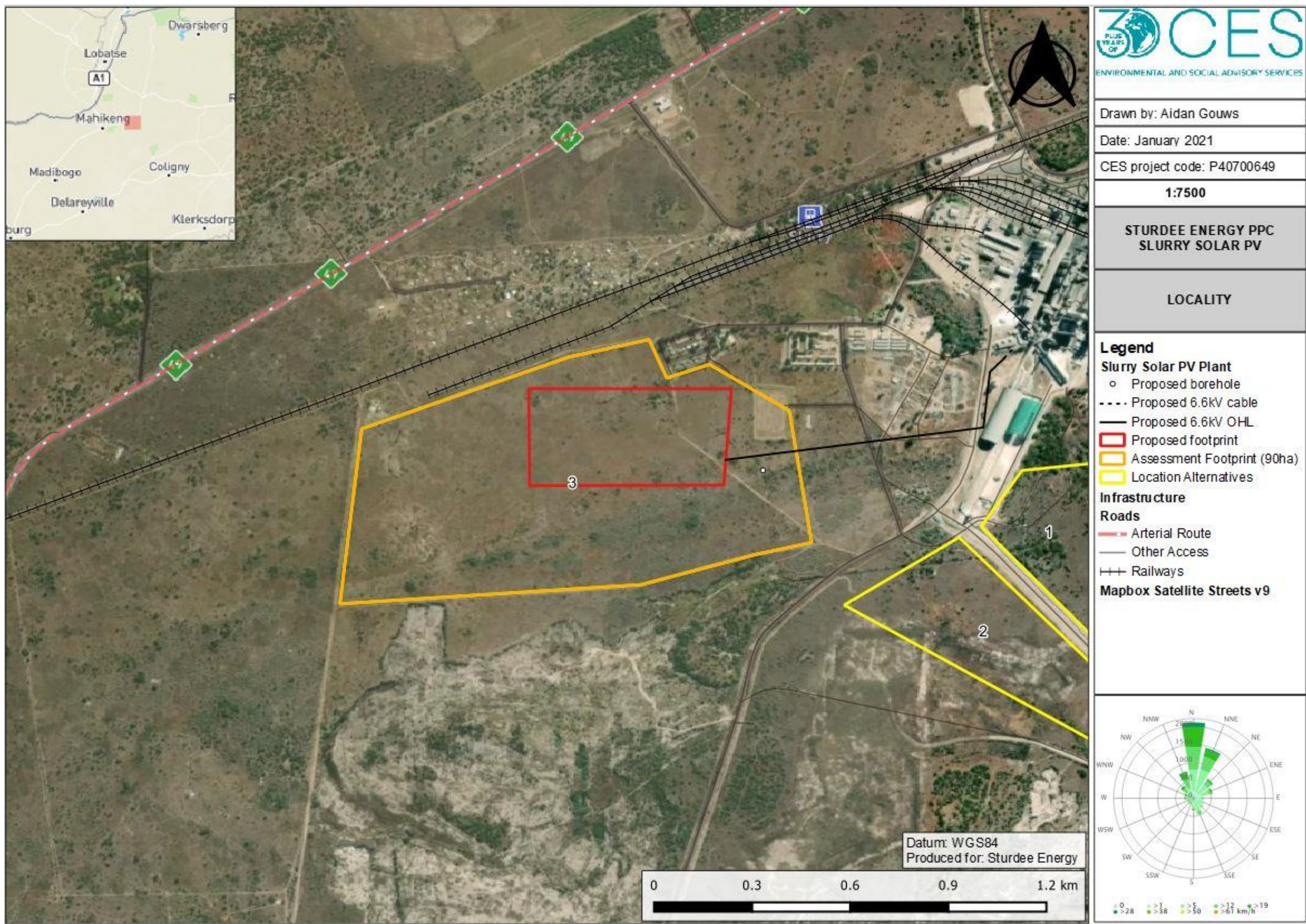


Figure 2.1: Location of the proposed site at PPC PPC Slurry near Mahikeng, North West.

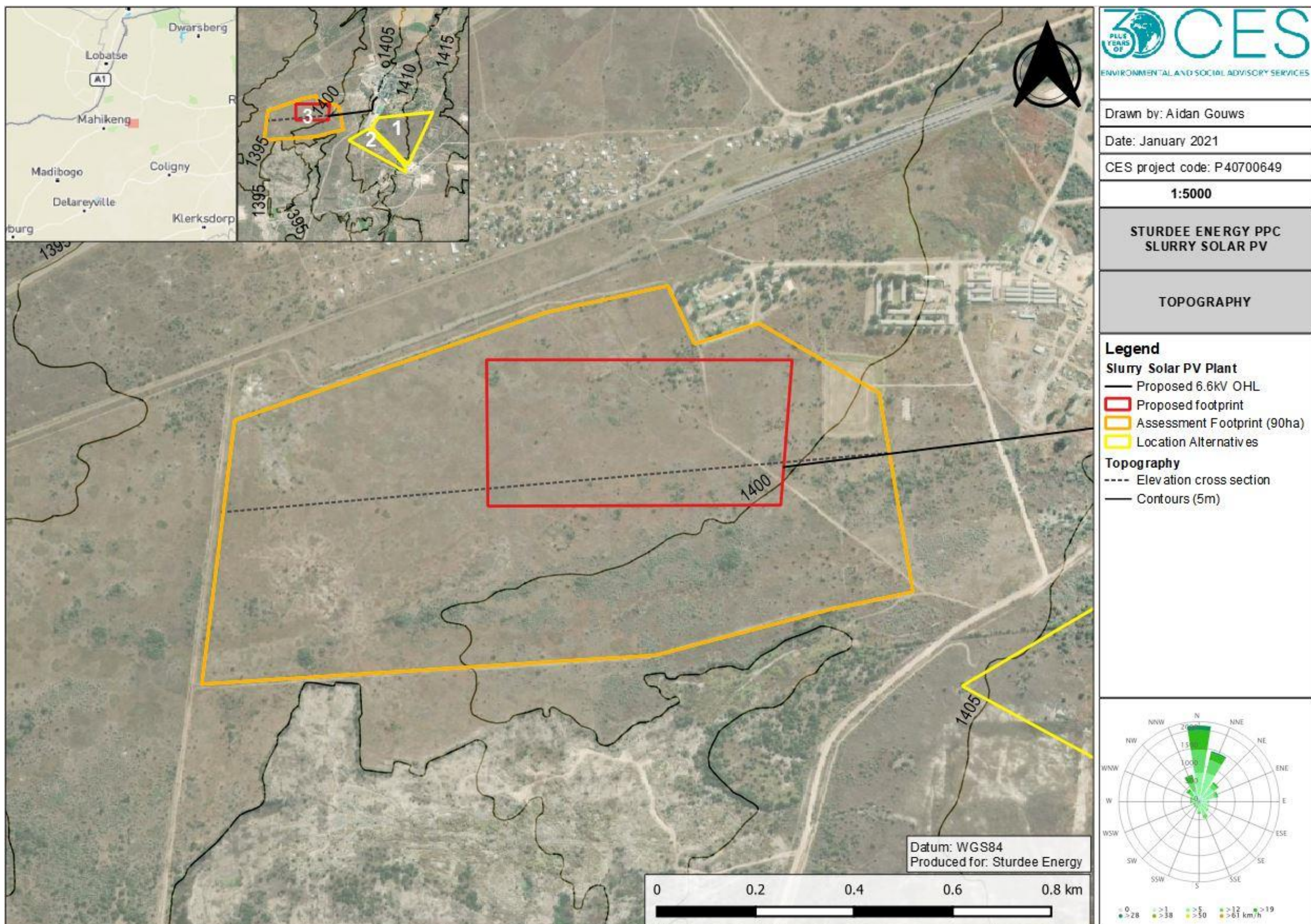


Figure 5.3: Topographic map of the proposed Solar PV facility at PPC Slurry near Mahikeng, North West.

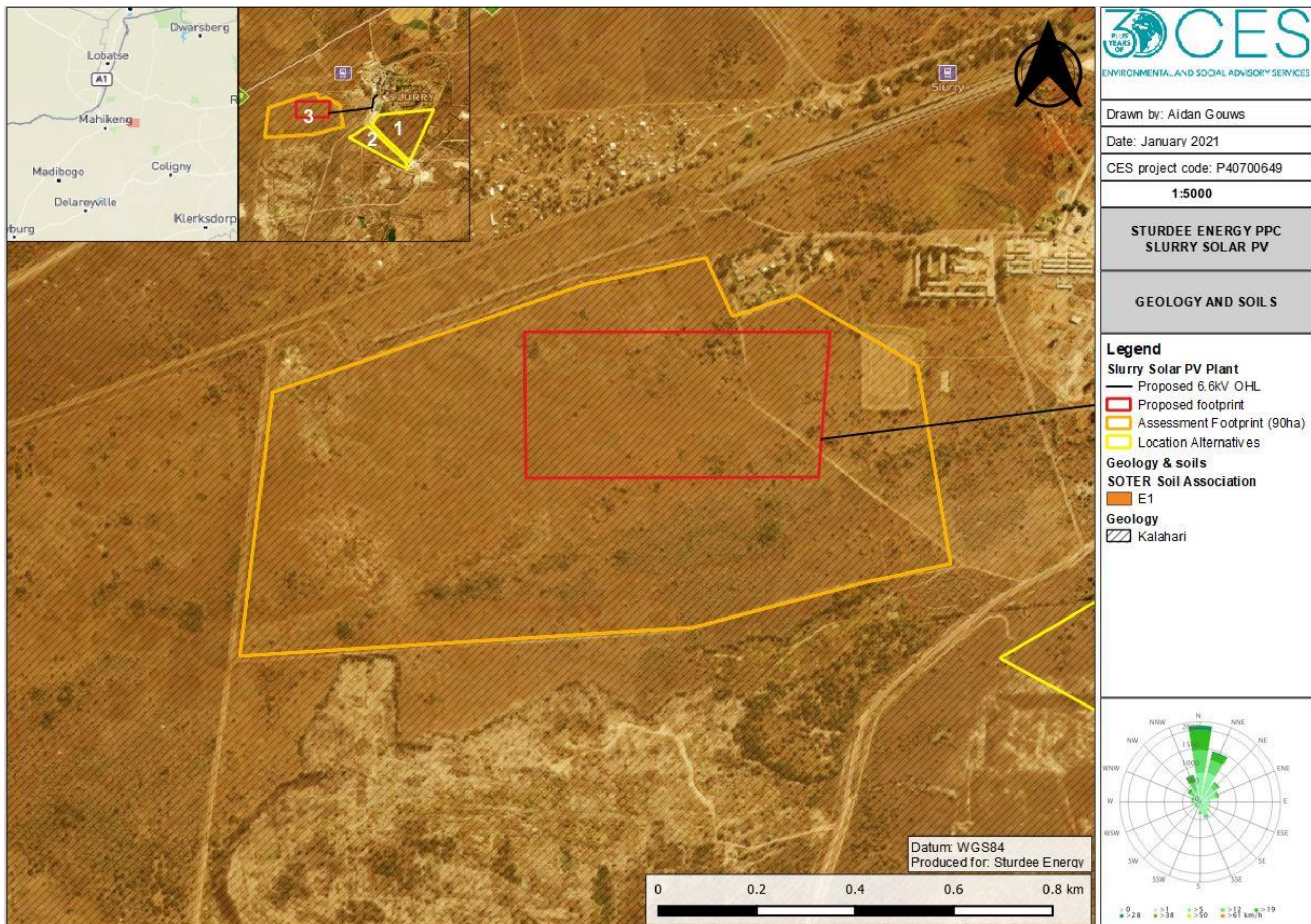


Figure 5.4: Geology and soil map of the proposed Solar PV facility at PPC Slurry near Mahikeng, North West.

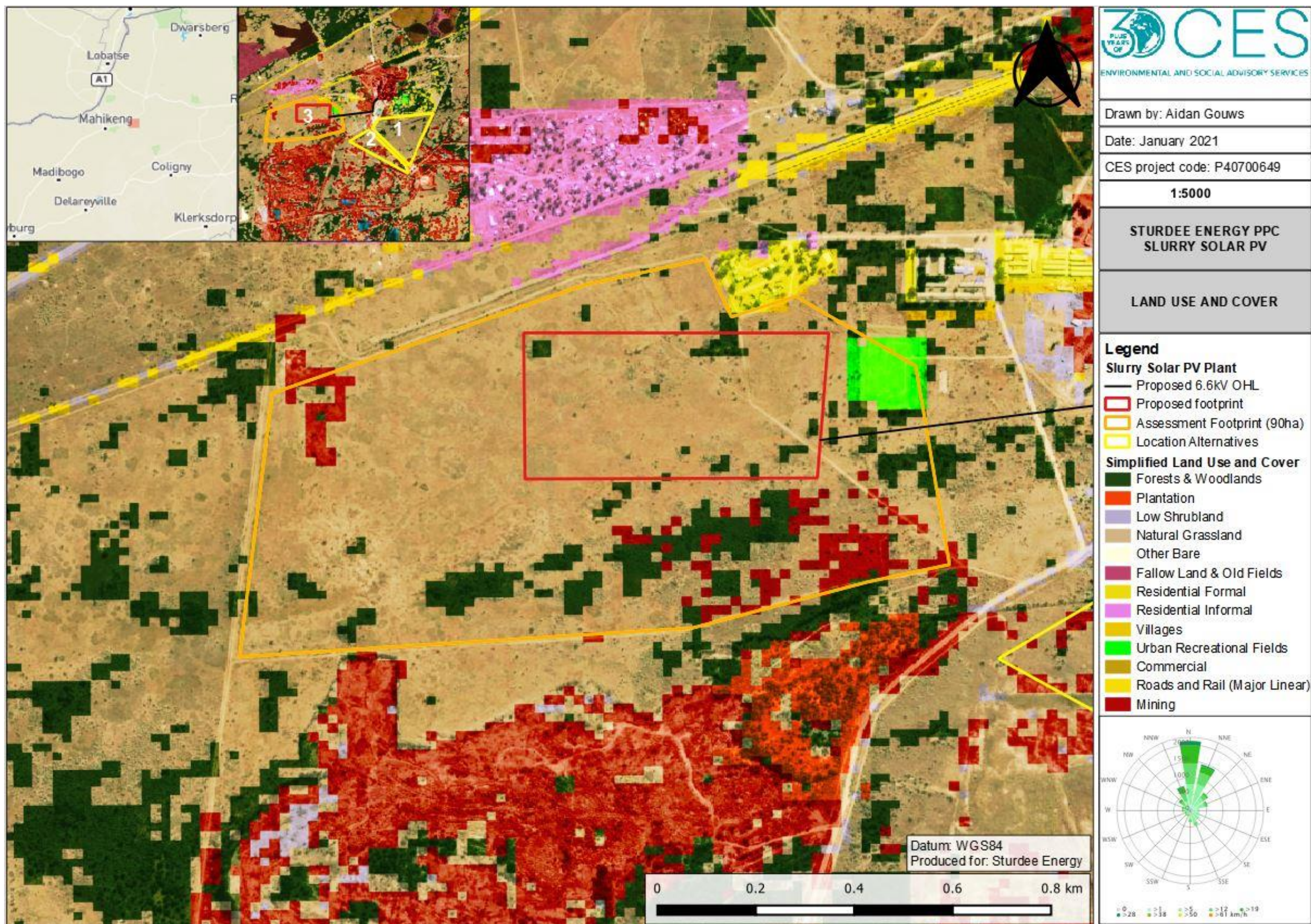


Figure 5.5: Land use & cover map of the proposed Solar PV facility at PPC Slurry near Mahikeng, North West.

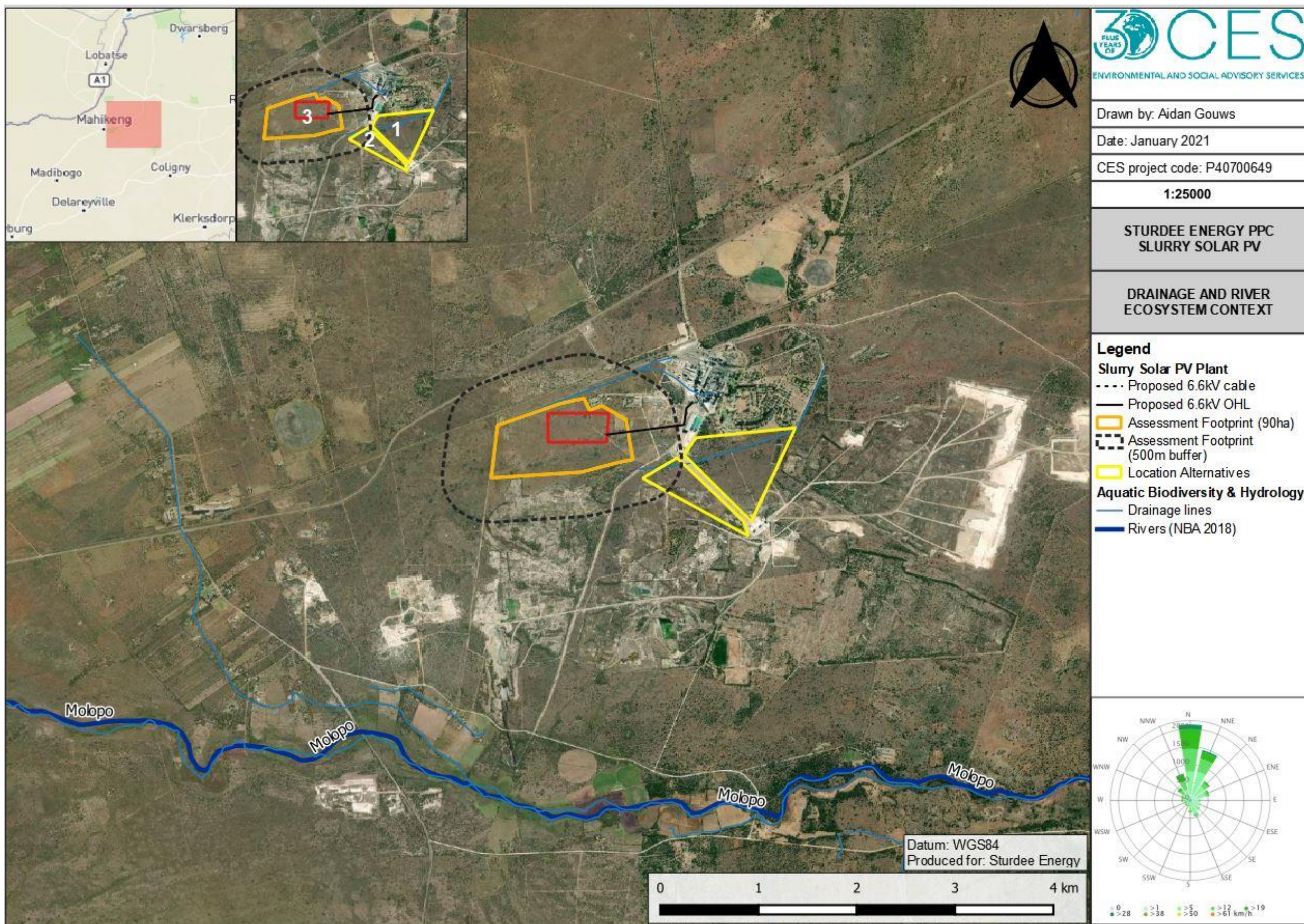


Figure 5.6: Drainage and River map of the proposed Solar PV facility at PPC Slurry near Mahikeng, North West.

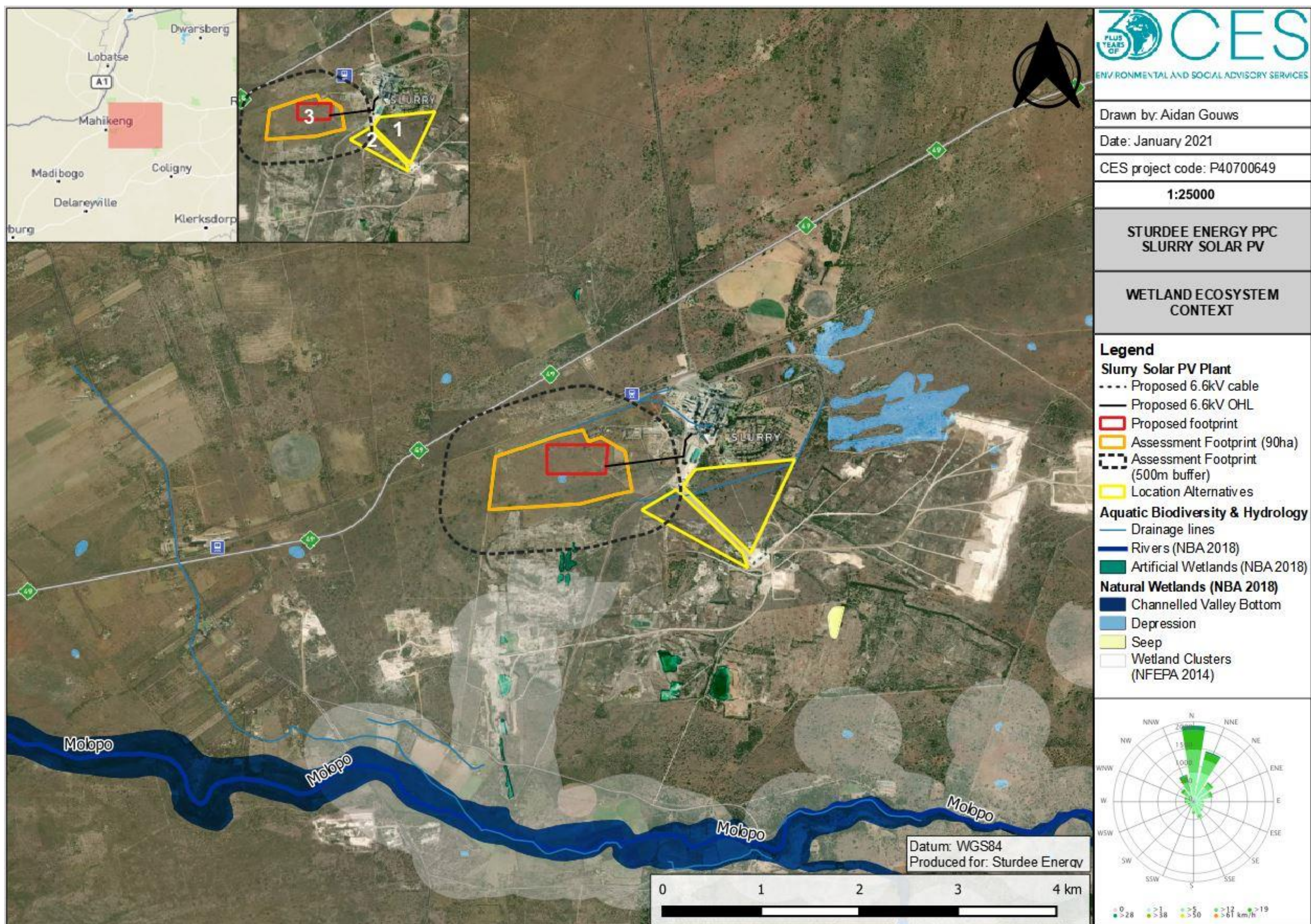


Figure 5.7: Wetland Ecosystem map of the proposed Solar PV facility at PPC Slurry, North West.

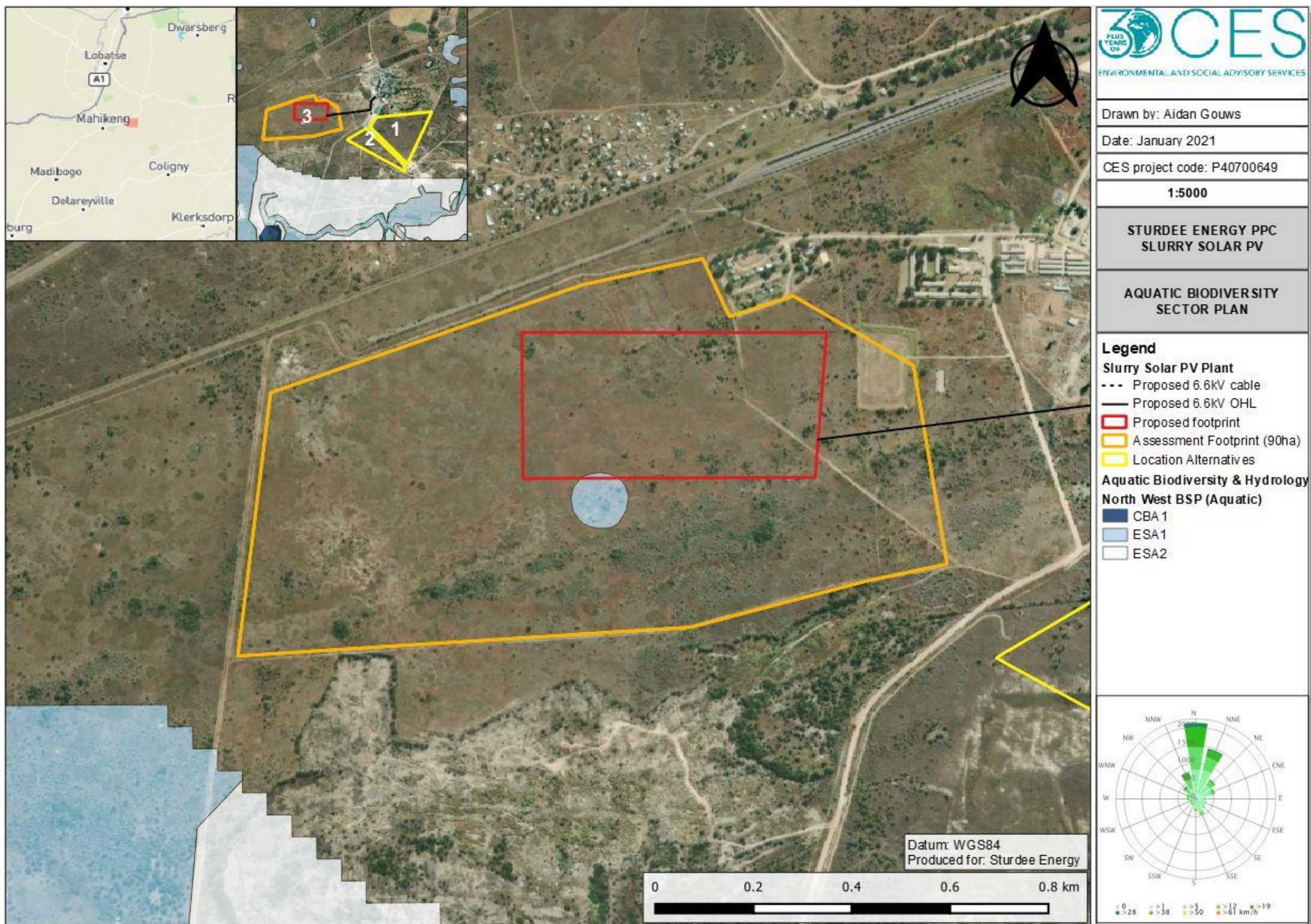


Figure: 5.8: Aquatic CBA & ESA map of the proposed Solar PV facility at PPC Slurry, North West.

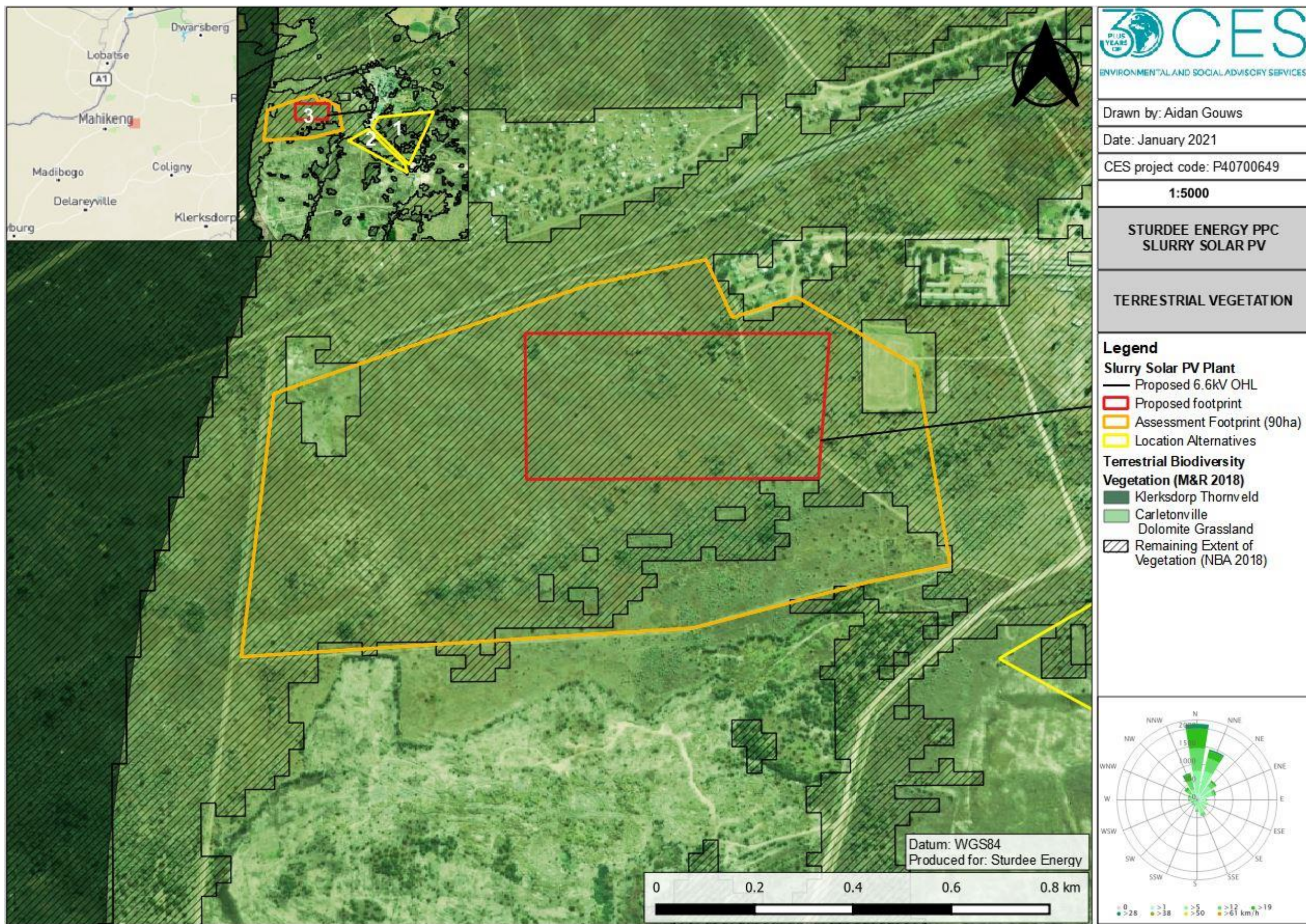


Figure 5.9: Mucina & Rutherford Vegetation map of the proposed Solar PV facility at PPC Slurry near Mahikeng, North West.

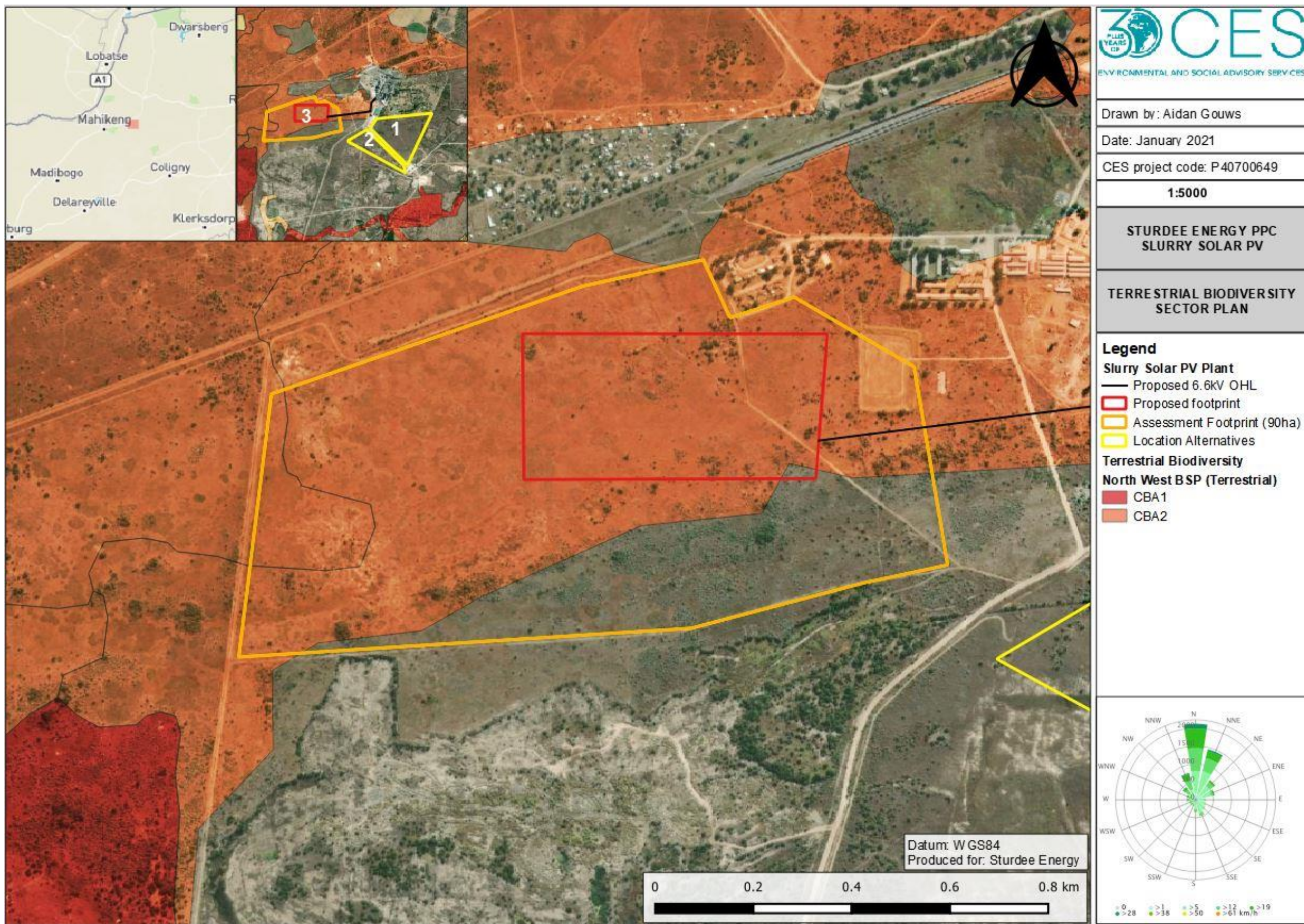


Figure 5.10: Terrestrial CBAs and ESAs map of the proposed Solar PV facility at PPC Slurry.

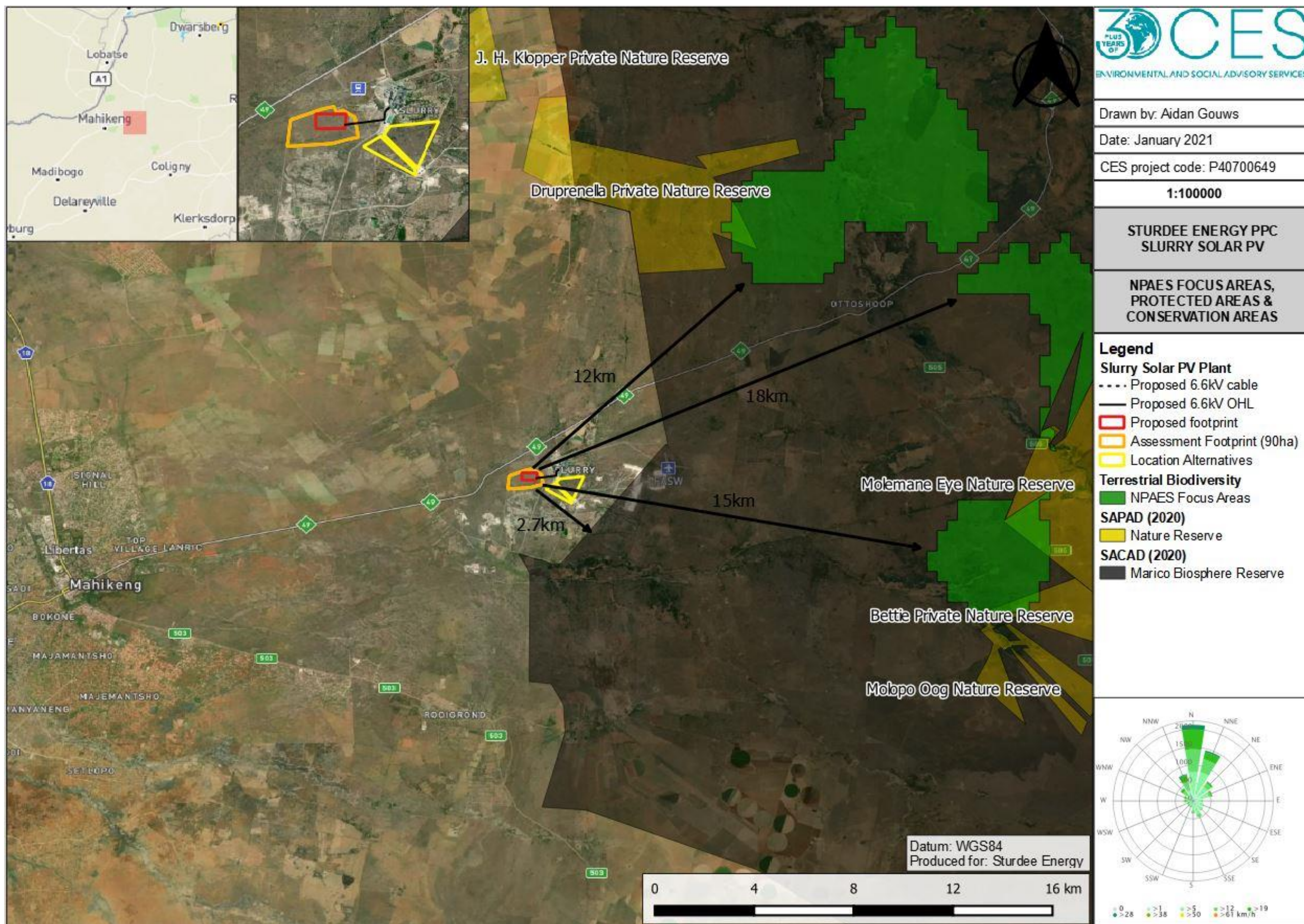


Figure 5.11: NPAES Focus Areas, Protected Areas and Conservation Areas.

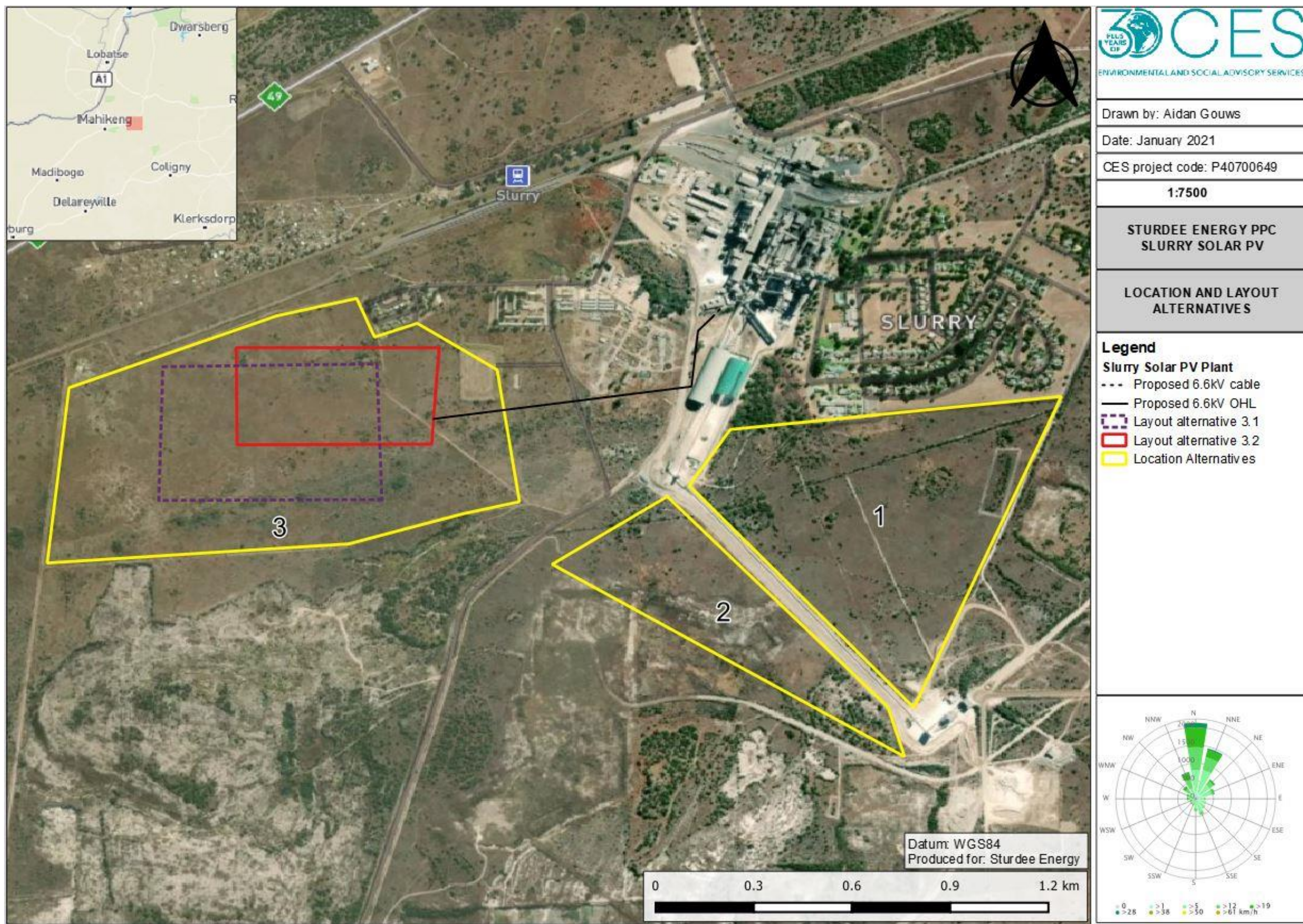


Figure 7.1: Location alternatives for the proposed Solar PV facility at PPC Slurry near Mahikeng, North West.

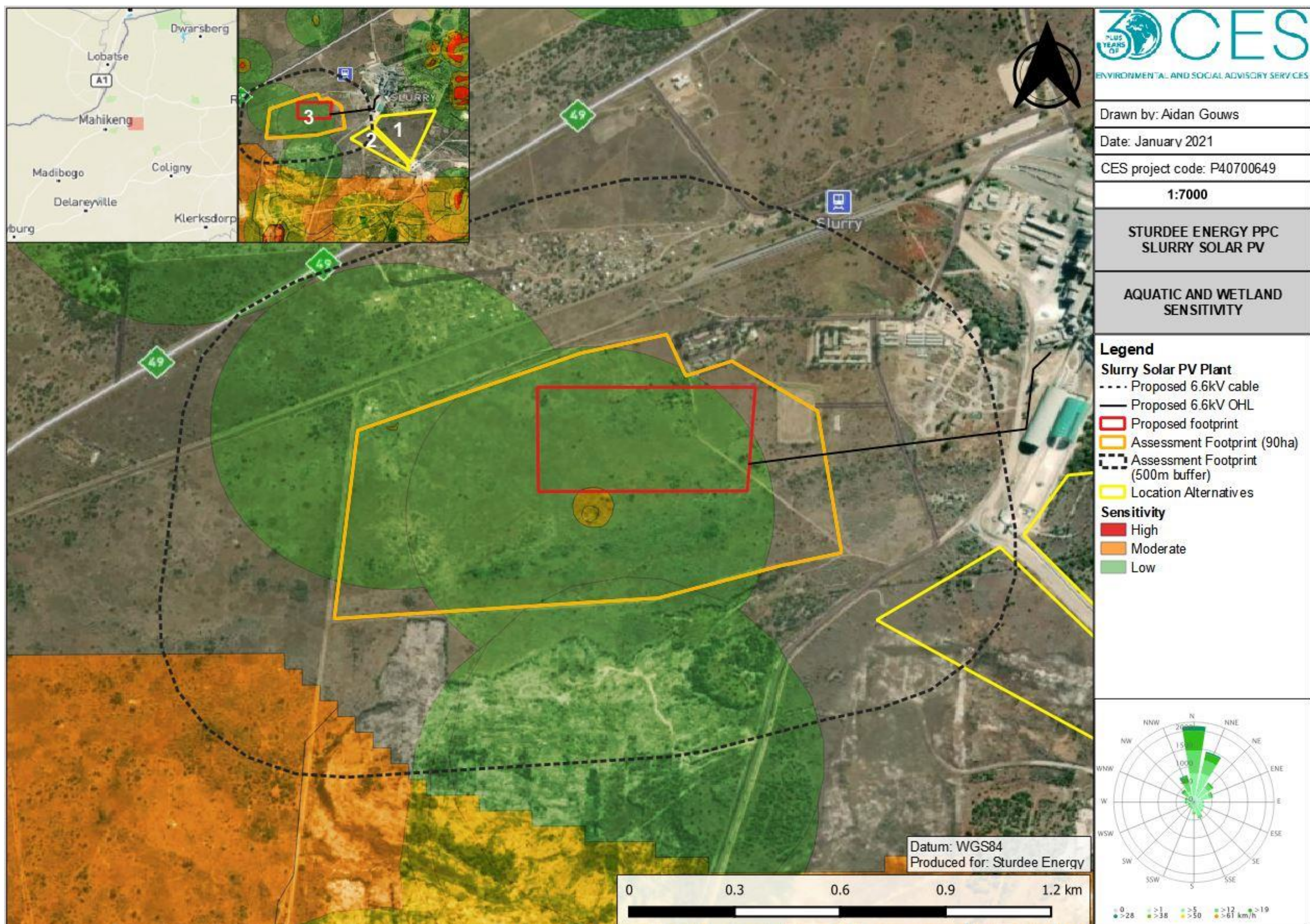


Figure 10.1: Aquatic and wetland sensitivity map for the PPC Slurry Solar Park

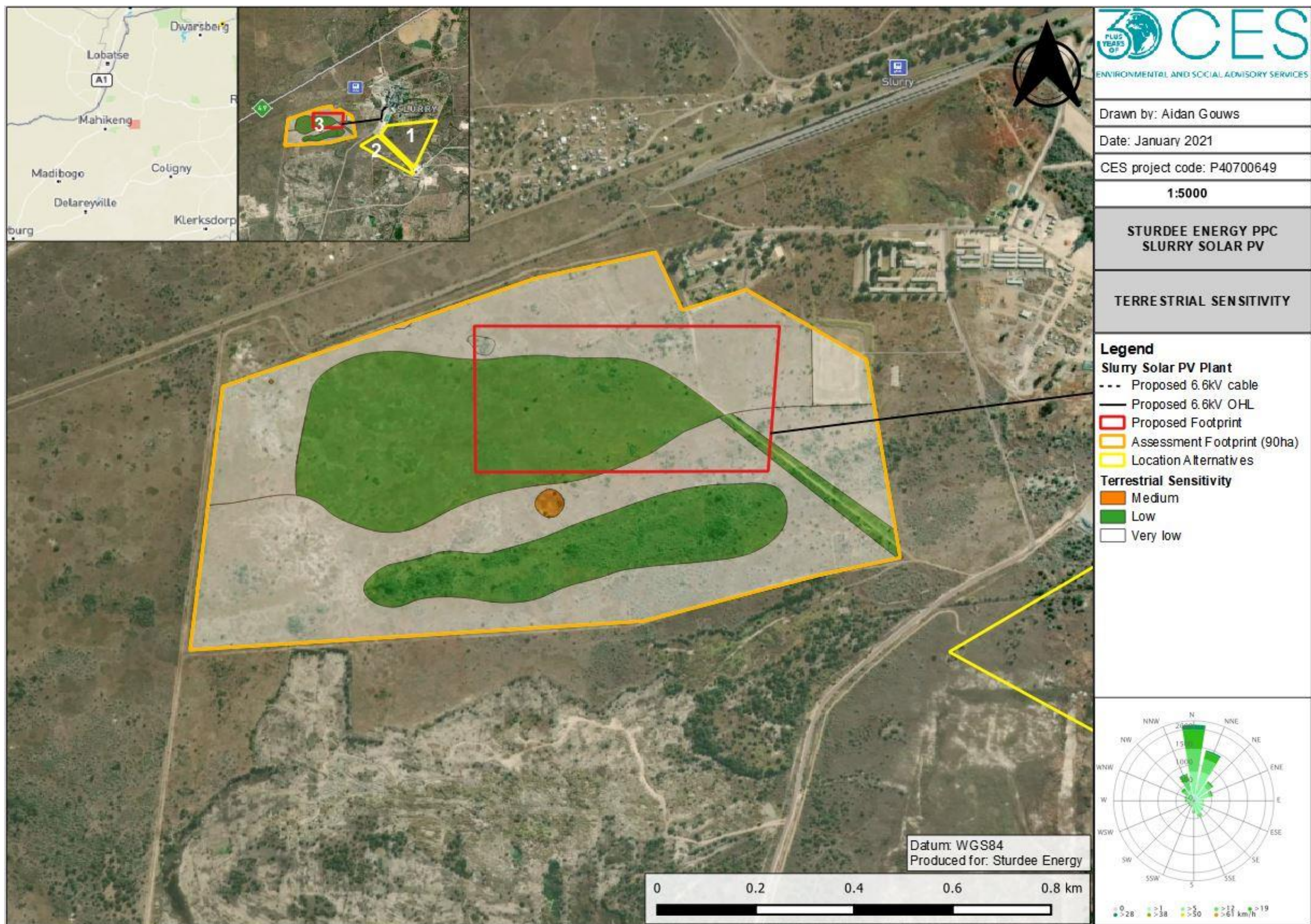


Figure 10.2: Terrestrial Biodiversity Sensitivity for the PPC Slurry Solar Park

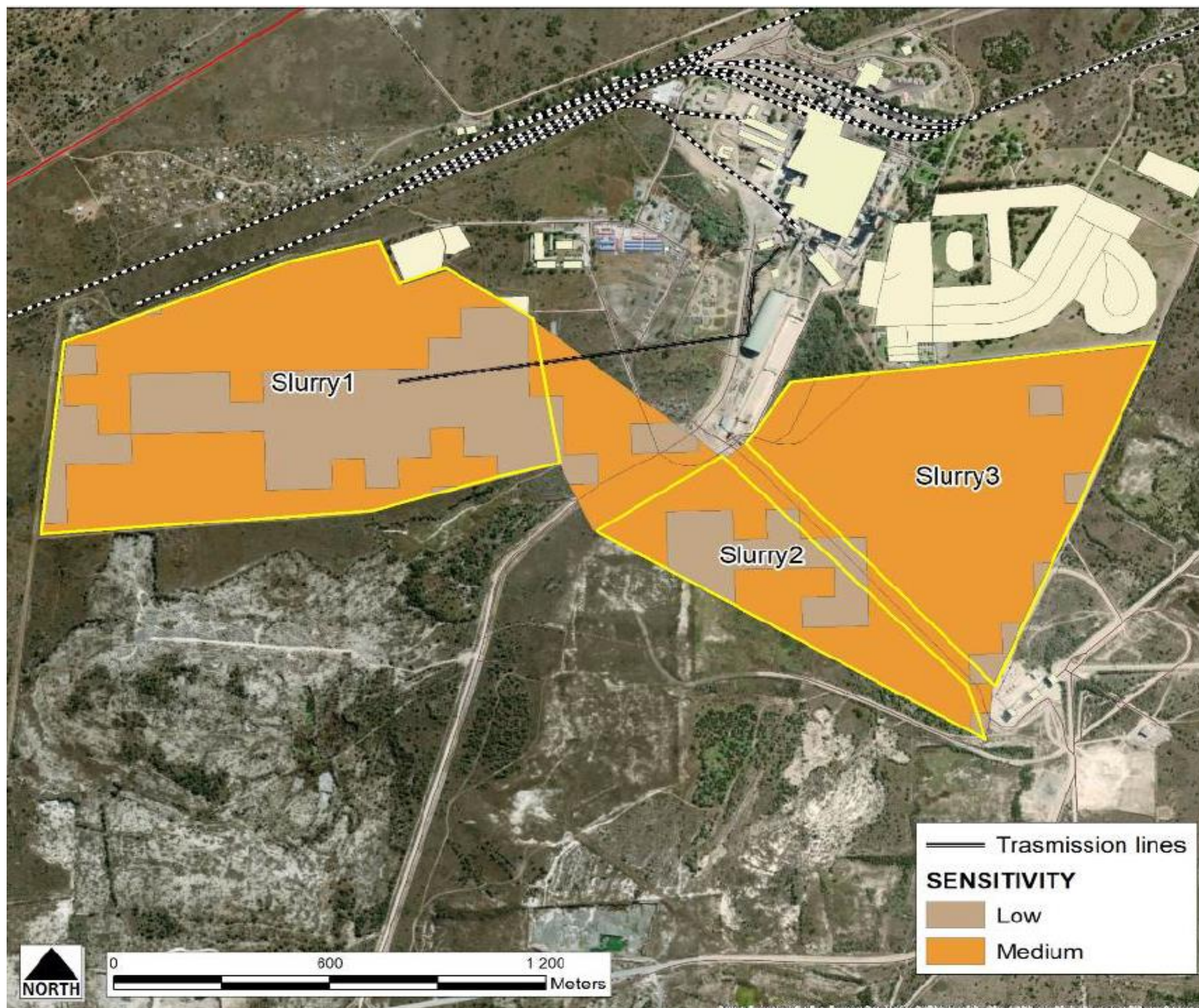


Figure 10.2: Agricultural sensitivity for the PPC Slurry Solar Park

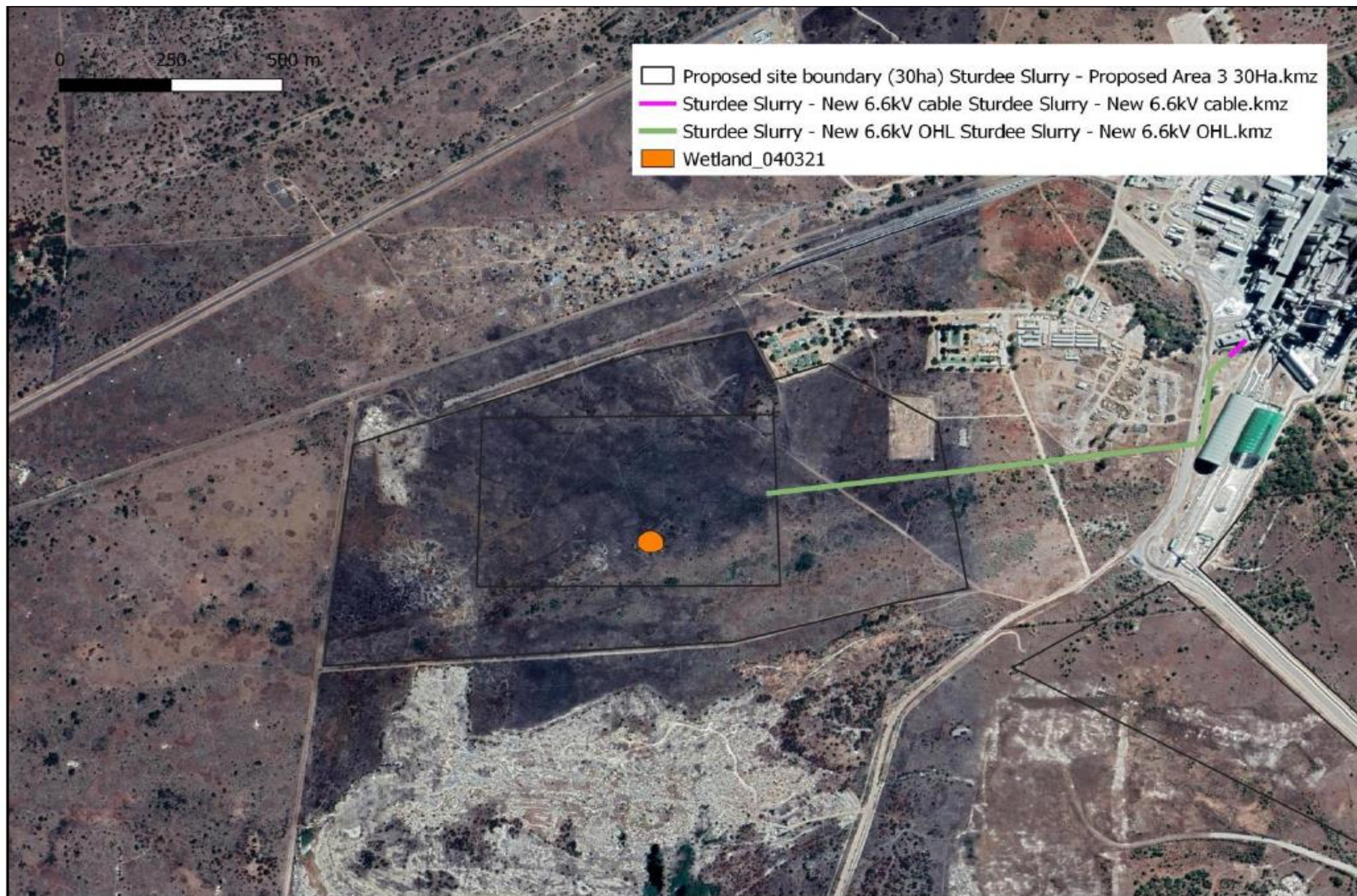


Figure 10.3: Avifaunal Sensitivity for the PPC Slurry Solar Park