

APPENDIX A

MAPS

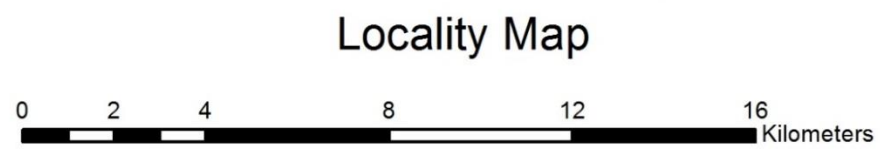
TABLE OF CONTENTS

Map 1: Locality Map.....	4
Map 2: Route Plan.....	5
Map 3: Sensitivity Map 1.....	6
Map 4: Sensitivity Map 2.....	7
Map 5: Sensitivity Map 3.....	8
Map 6: Sensitivity Map 4.....	9
Map 7: Ecosystem Threat Status.....	10
Map 8: Vegetation type.....	11
Map 9: Geology.....	12
Map 10: Plantations.....	13
Map 11: Local Villages.....	14
Map 12: Watercourse Crossings.....	15
Map 13: Crossing 1.....	16
Map 14: Crossing 2.....	17
Map 15: Crossing 4 – 8.....	18
Map 16: Crossing 9.....	19
Map 17: Crossing 10.....	20
Map 18: Crossing 11.....	21
Map 19: Crossing 12.....	22
Map 20: Crossing 13.....	23
Map 21: Crossing 14.....	24
Map 22: Crossing 15.....	25
Map 23: Crossing 16.....	26
Map 24: Crossing 17.....	27
Map 25: Crossing 18.....	28
Map 26: Crossing 19.....	29
Map 27: Crossing 20 & 21.....	30
Map 28: Crossing 22.....	31
Map 29: Crossing 23.....	32

Map 30: Crossing 24.....33

Map 31: Crossing 25.....34

Map 32: Crossing 26 & 27.....35

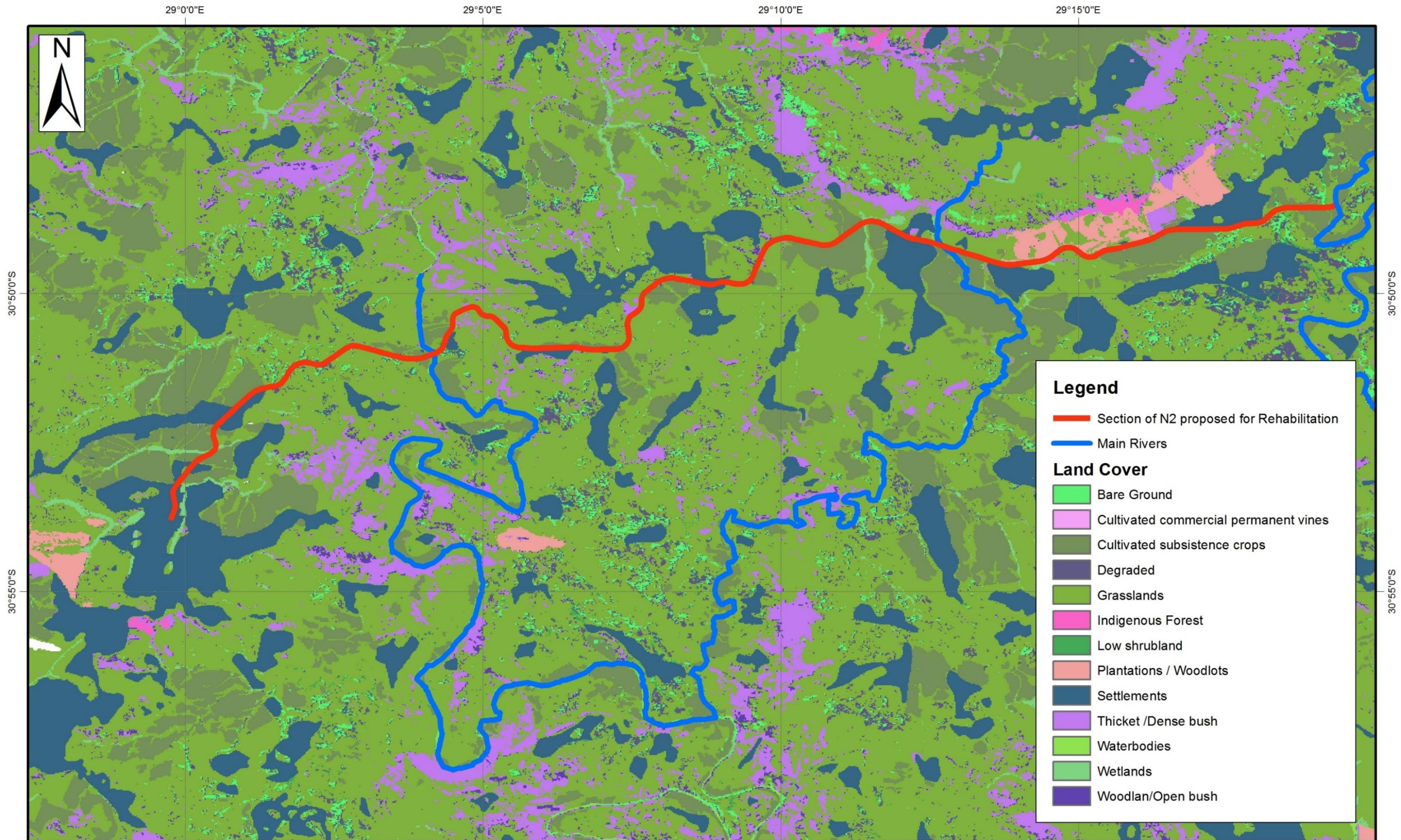


Locality Map

Figure:
Locality

Scale:
1 : 200 000





Route Plan

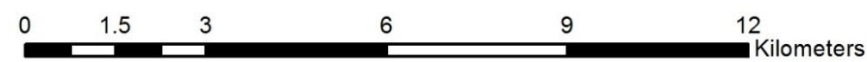
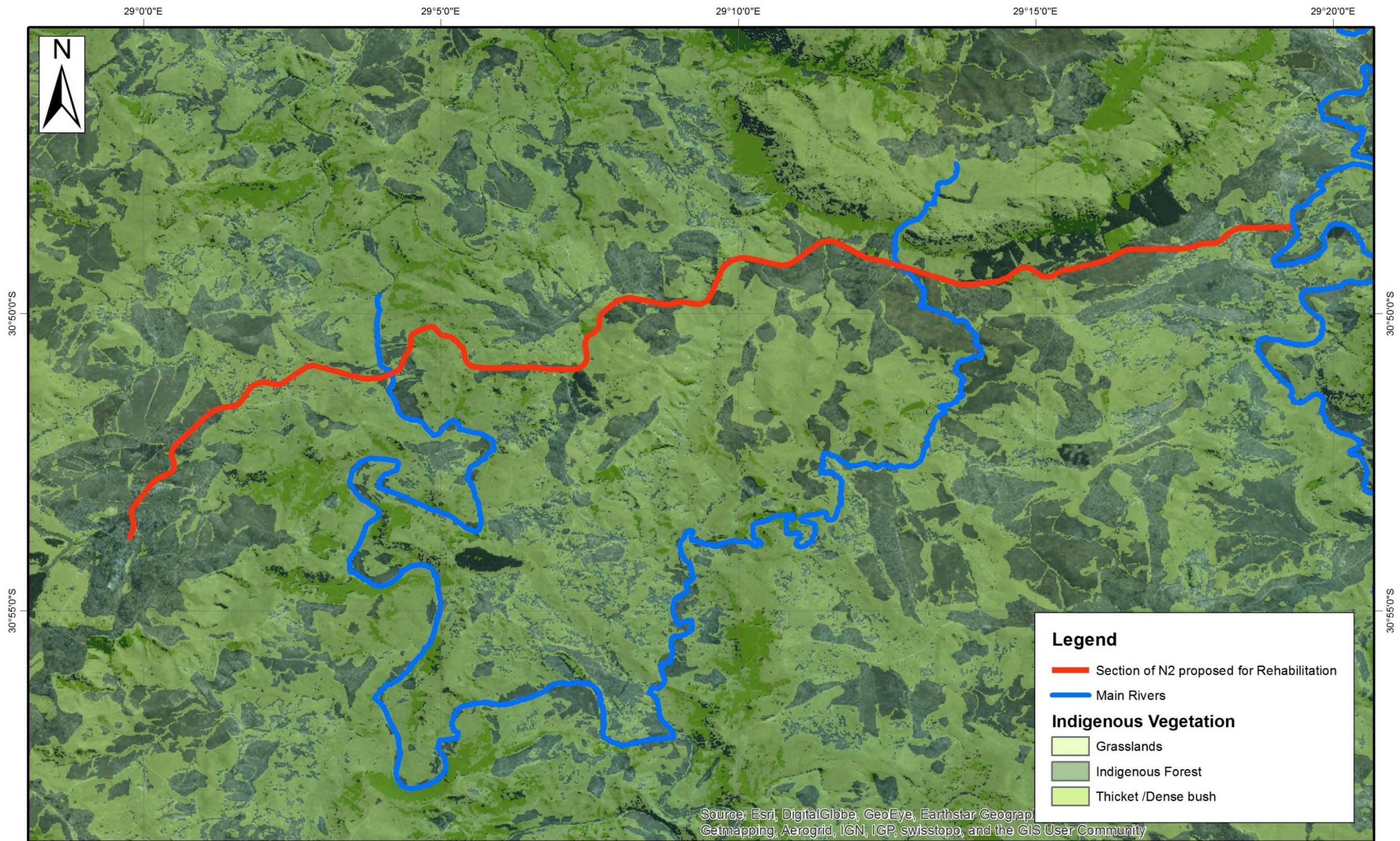


Figure:
Route Plan

Scale:
1 : 150 000





Sensitivity Map 1

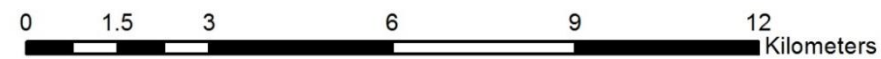
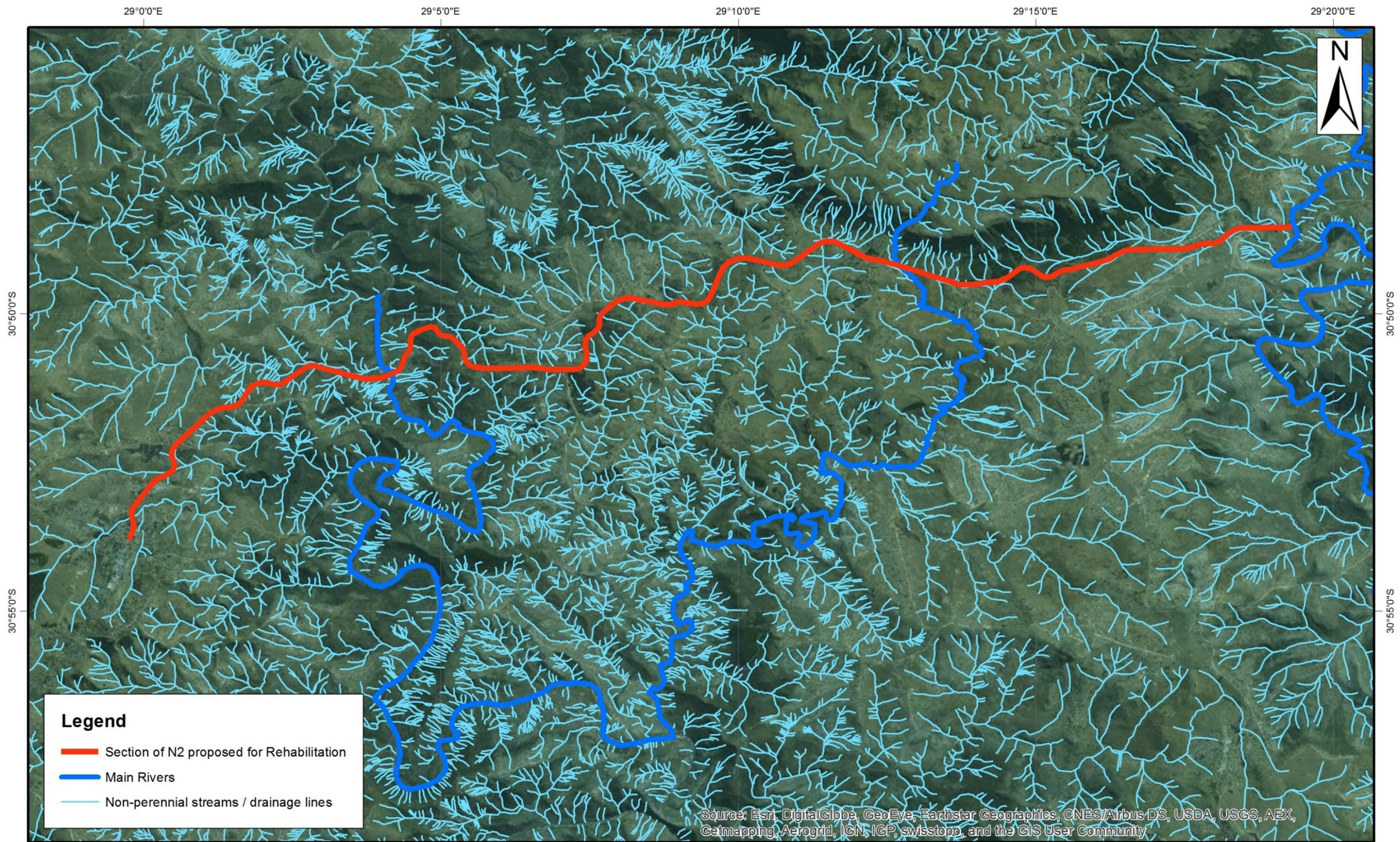


Figure:
Sensitivity 1

Scale:
1 : 150 000





Sensitivity Map 2

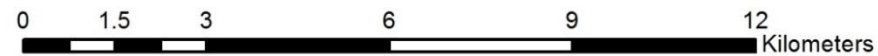
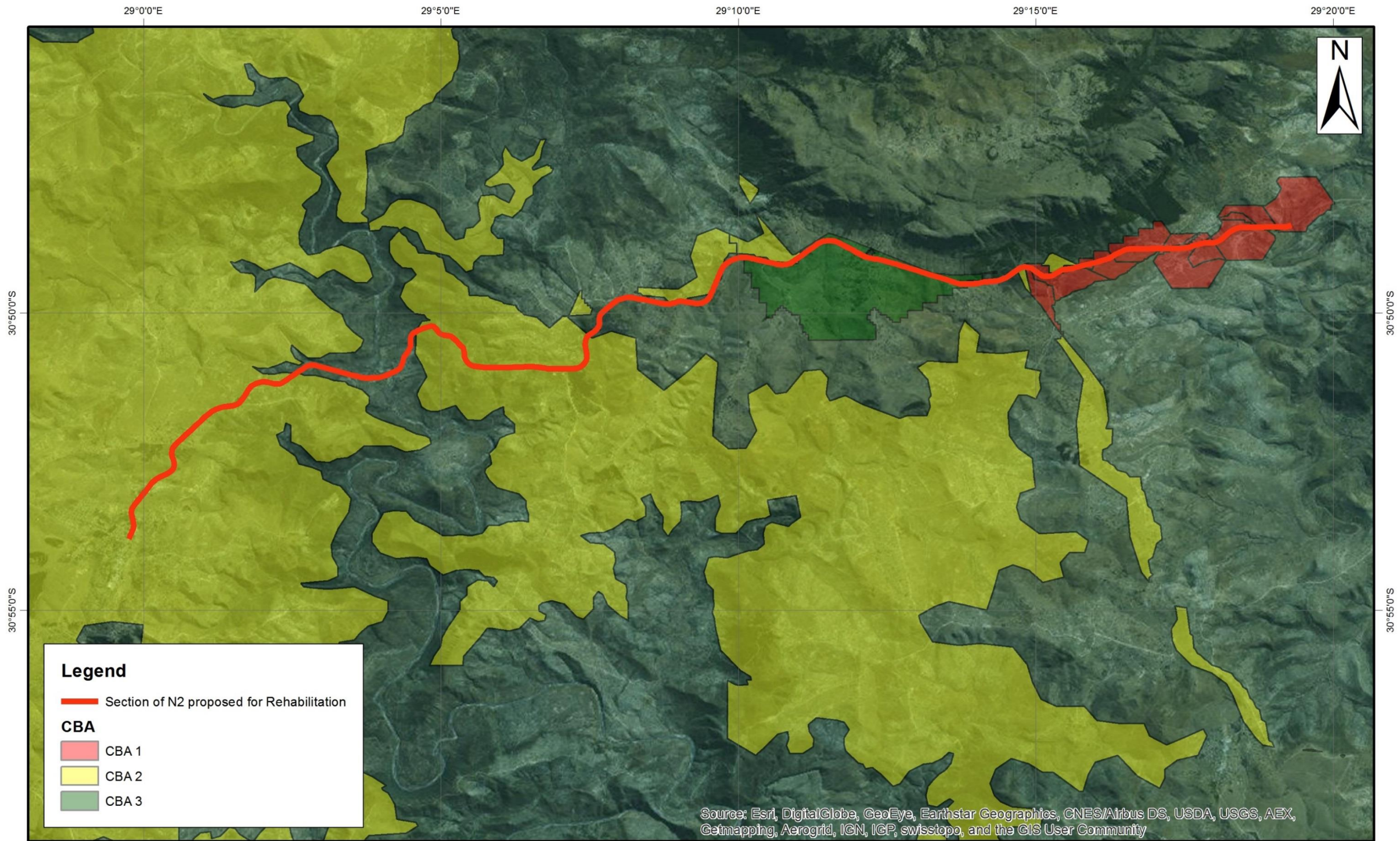


Figure:
Sensitivity 2

Scale:
1 : 150 000





Sensitivity Map 3

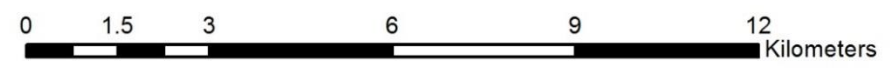
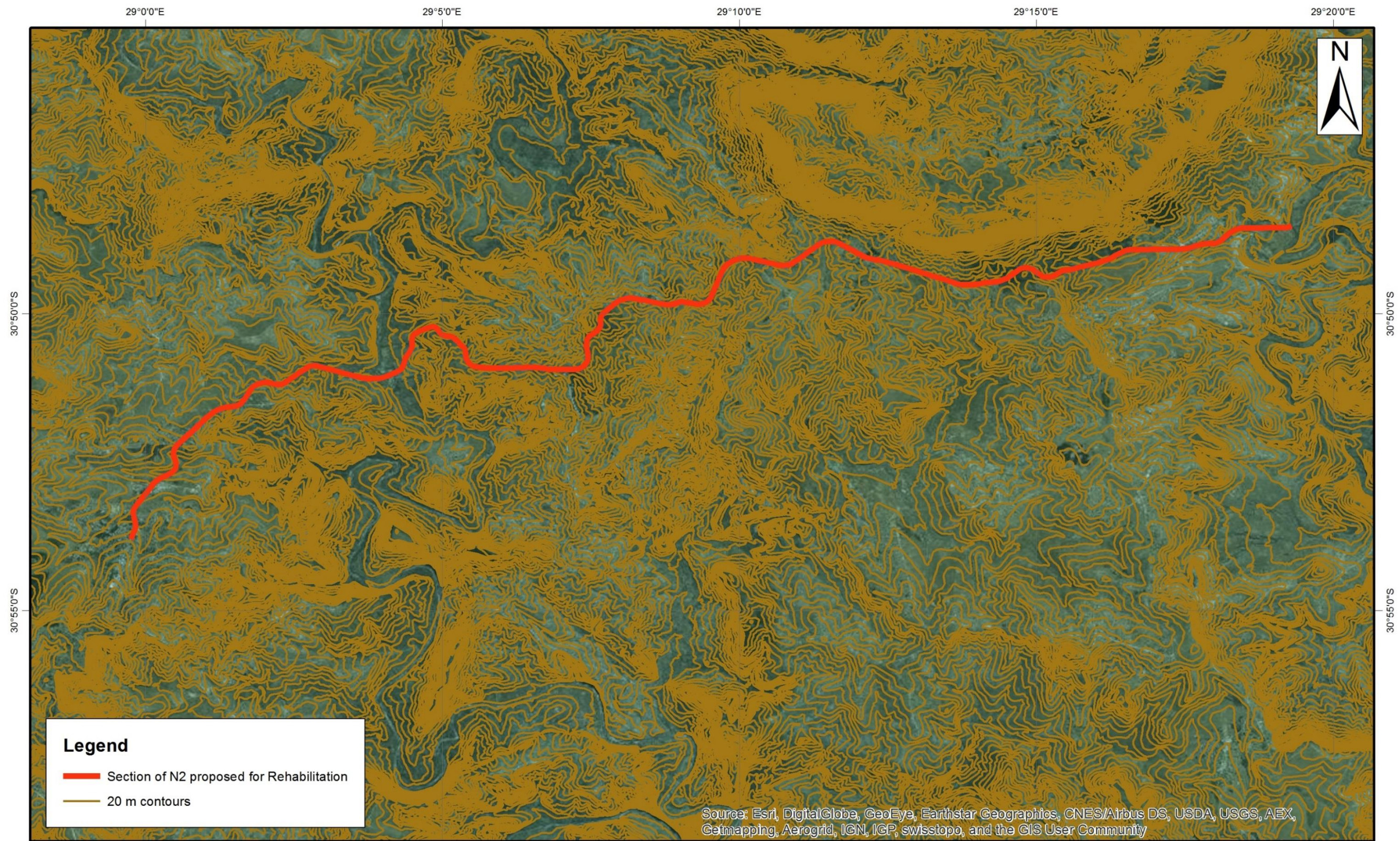


Figure:
Sensitivity 3
Scale:
1 : 150 000





Sensitivity Map 4

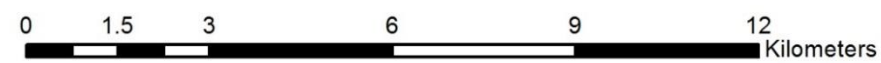
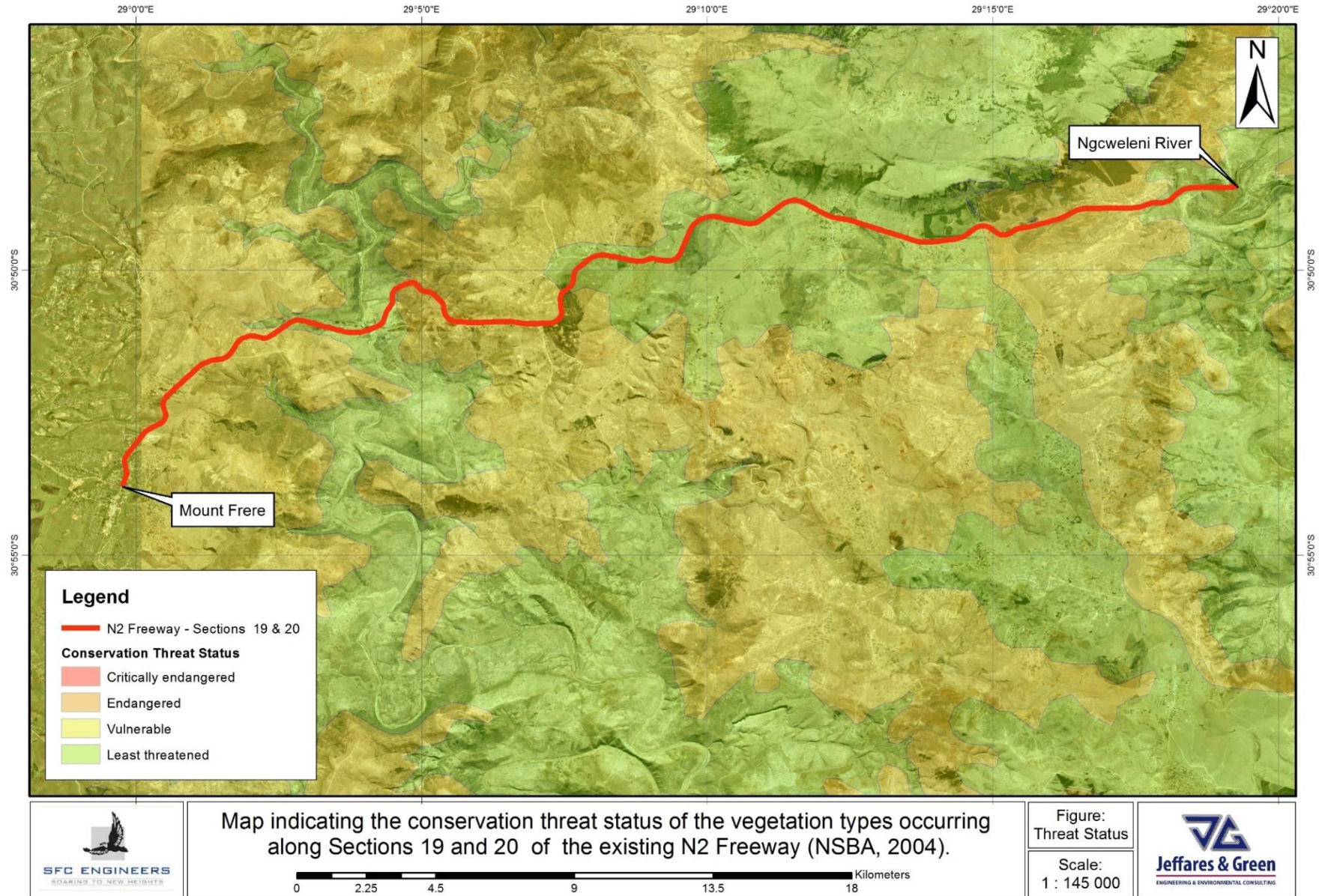
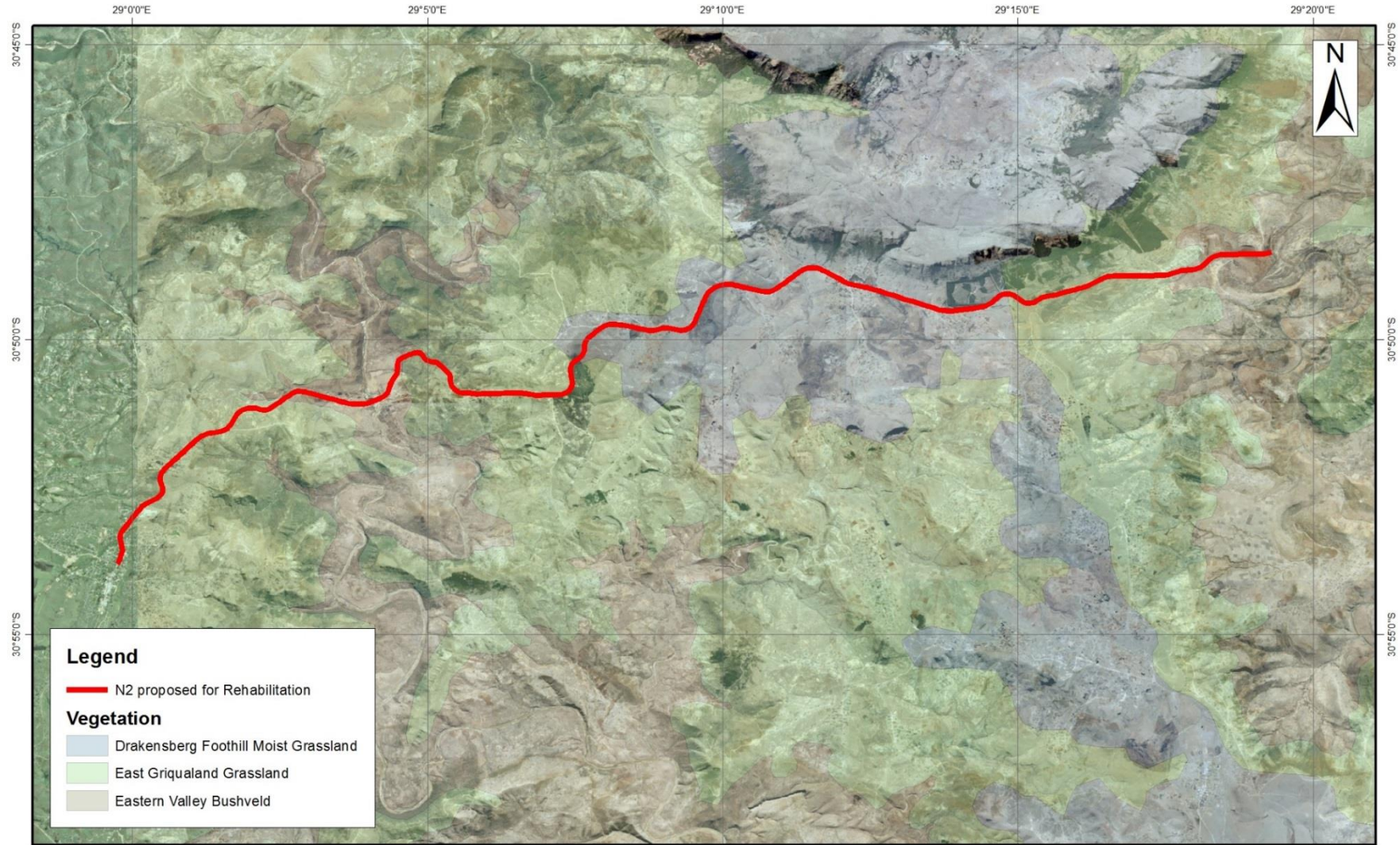


Figure:
Sensitivity 4

Scale:
1 : 150 000







Map indicating the vegetation types intersected by the sections of the N2 proposed for rehabilitation

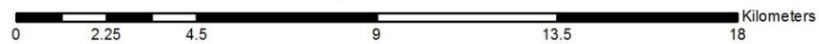
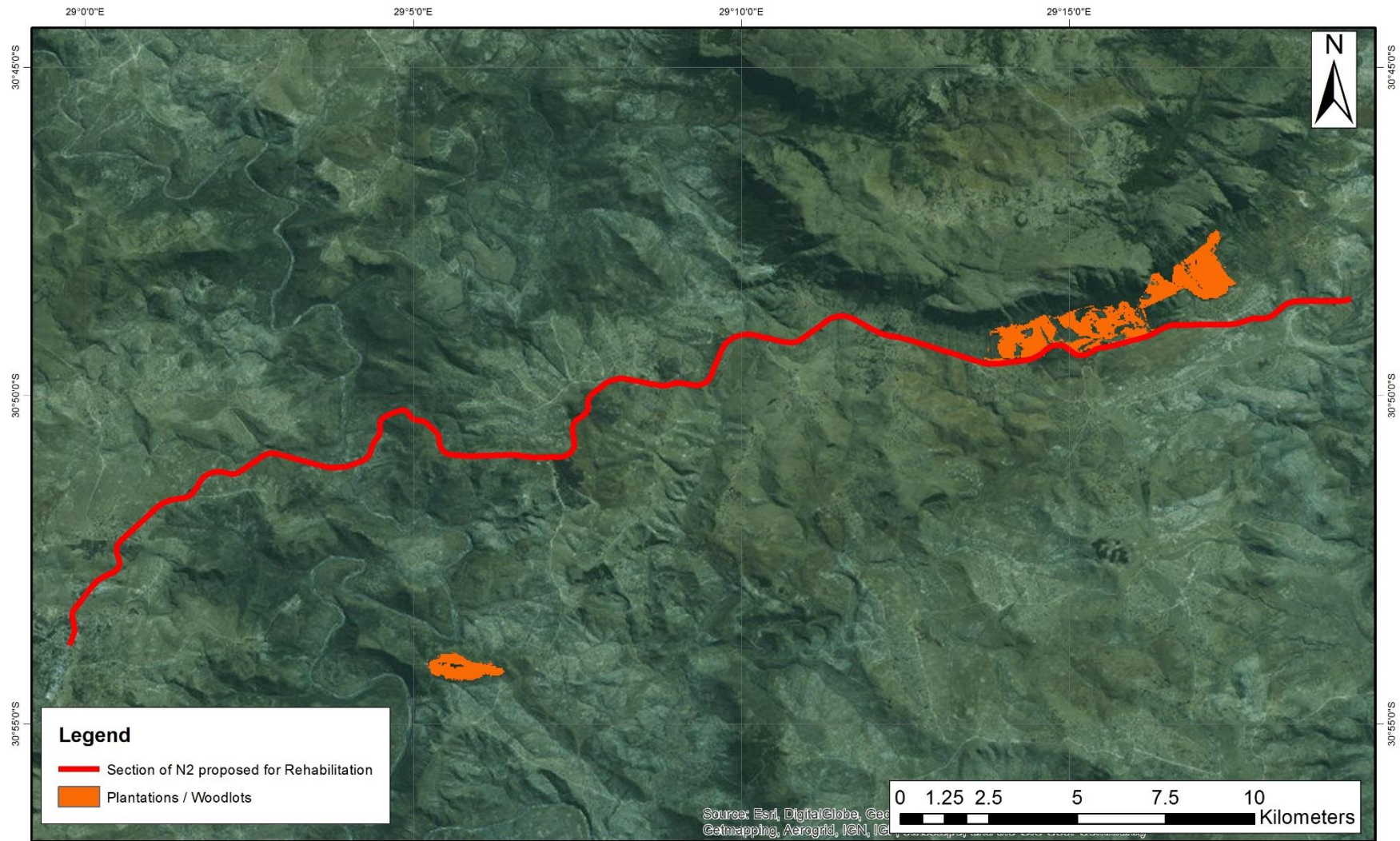


Figure:
Vegetation

Scale:
1 : 150 000





Map indicating the location of plantations occurring in proximity to Section 20 of the N2 Freeway

Figure:
Plantations

Scale:
1 : 135 000





Map indicating the underlying geology of the sections of the N2 proposed for rehabilitation

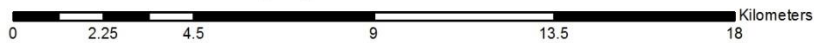


Figure:
Geology

Scale:
1 : 150 000





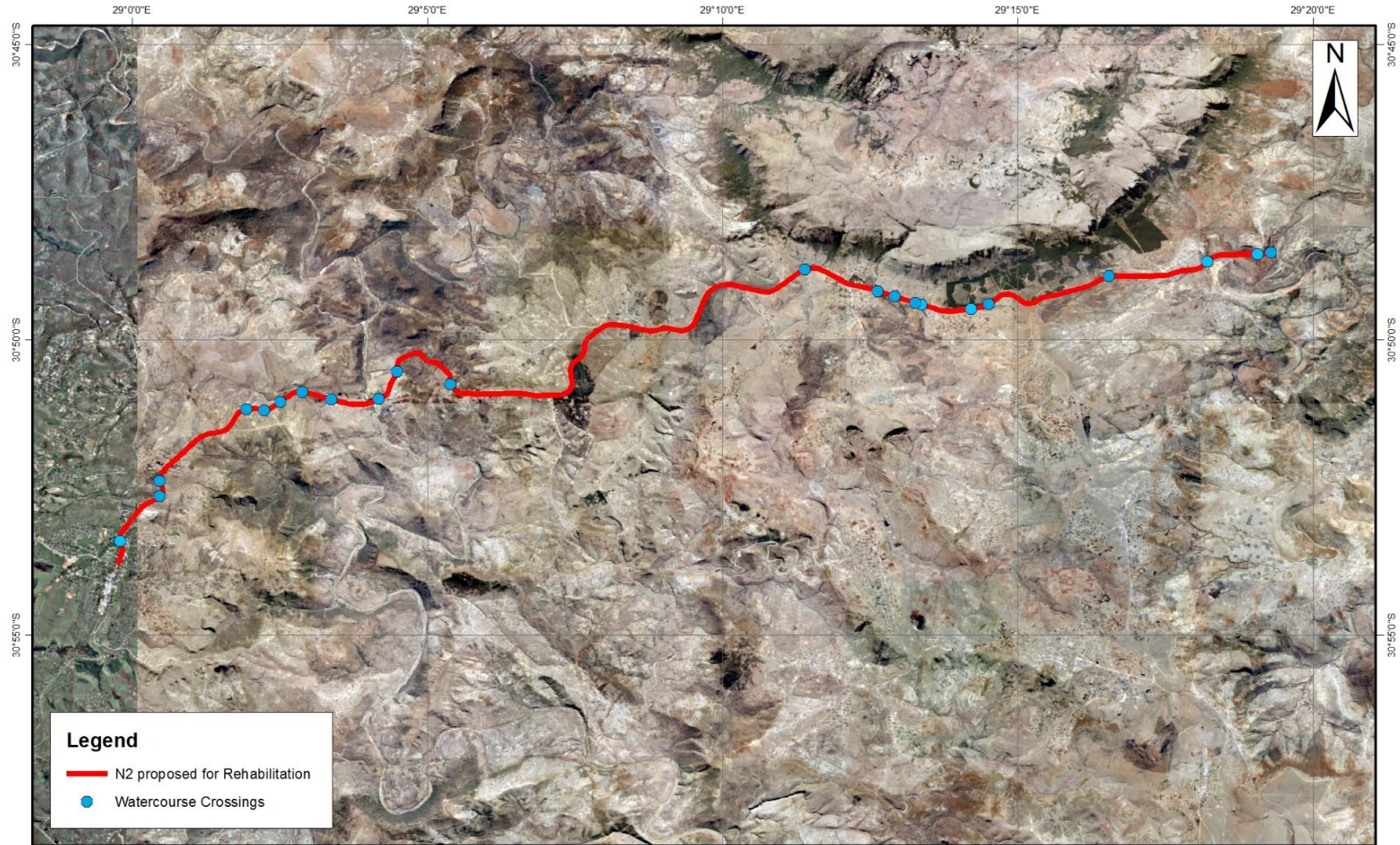
Local Villages occurring within 500 meters of the road proposed for upgrade and rehabilitation

0 1.5 3 6 9 12 Kilometers

Figure:
Villages

Scale:
1 : 150 000





Legend

- N2 proposed for Rehabilitation
- Watercourse Crossings



Map indicating the watercourse crossings identified along the length of the sections of the N2 proposed for rehabilitation



Figure:
Watercourses

Scale:
1 : 150 000





Watercourse Crossing 1

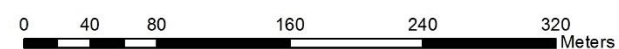
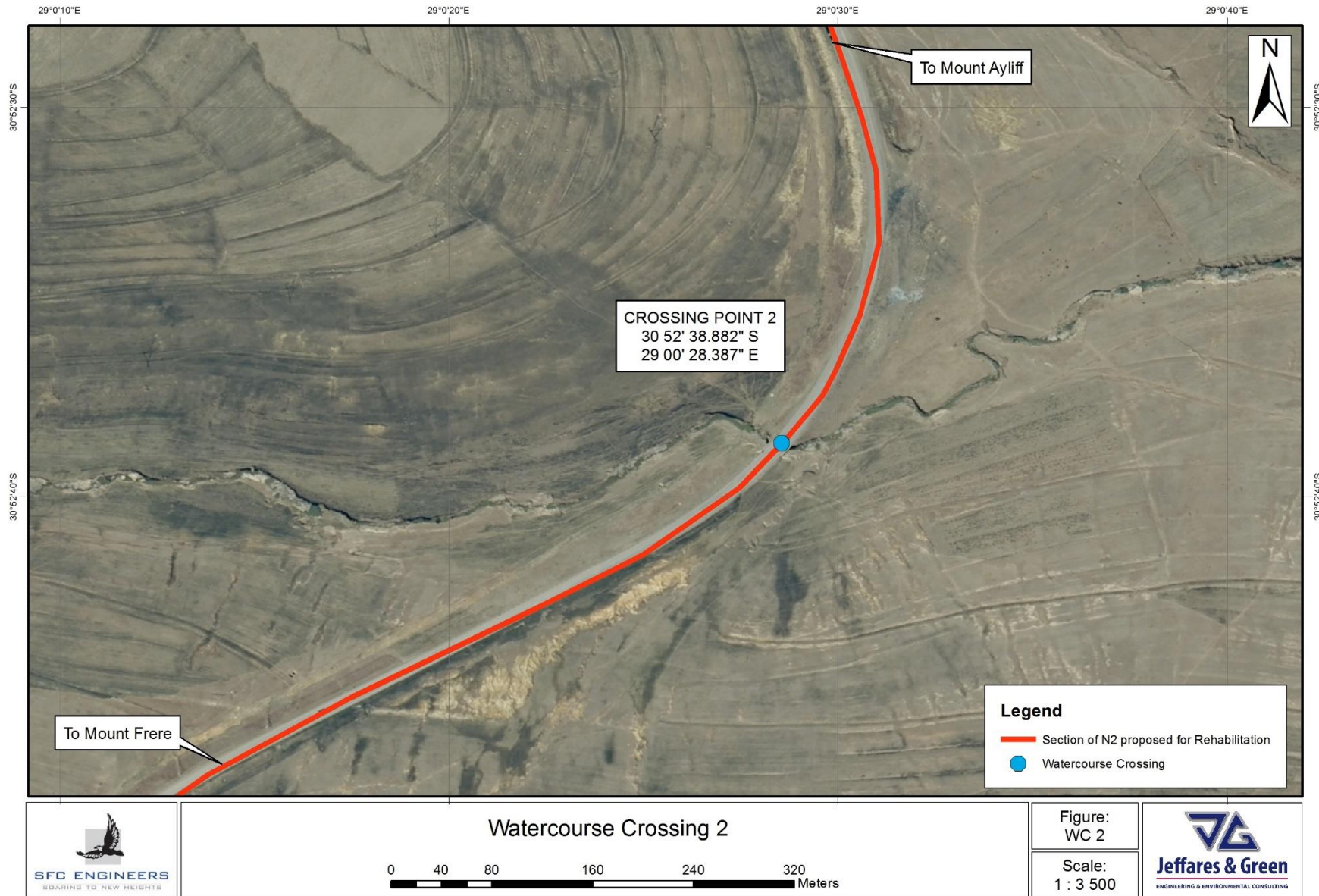
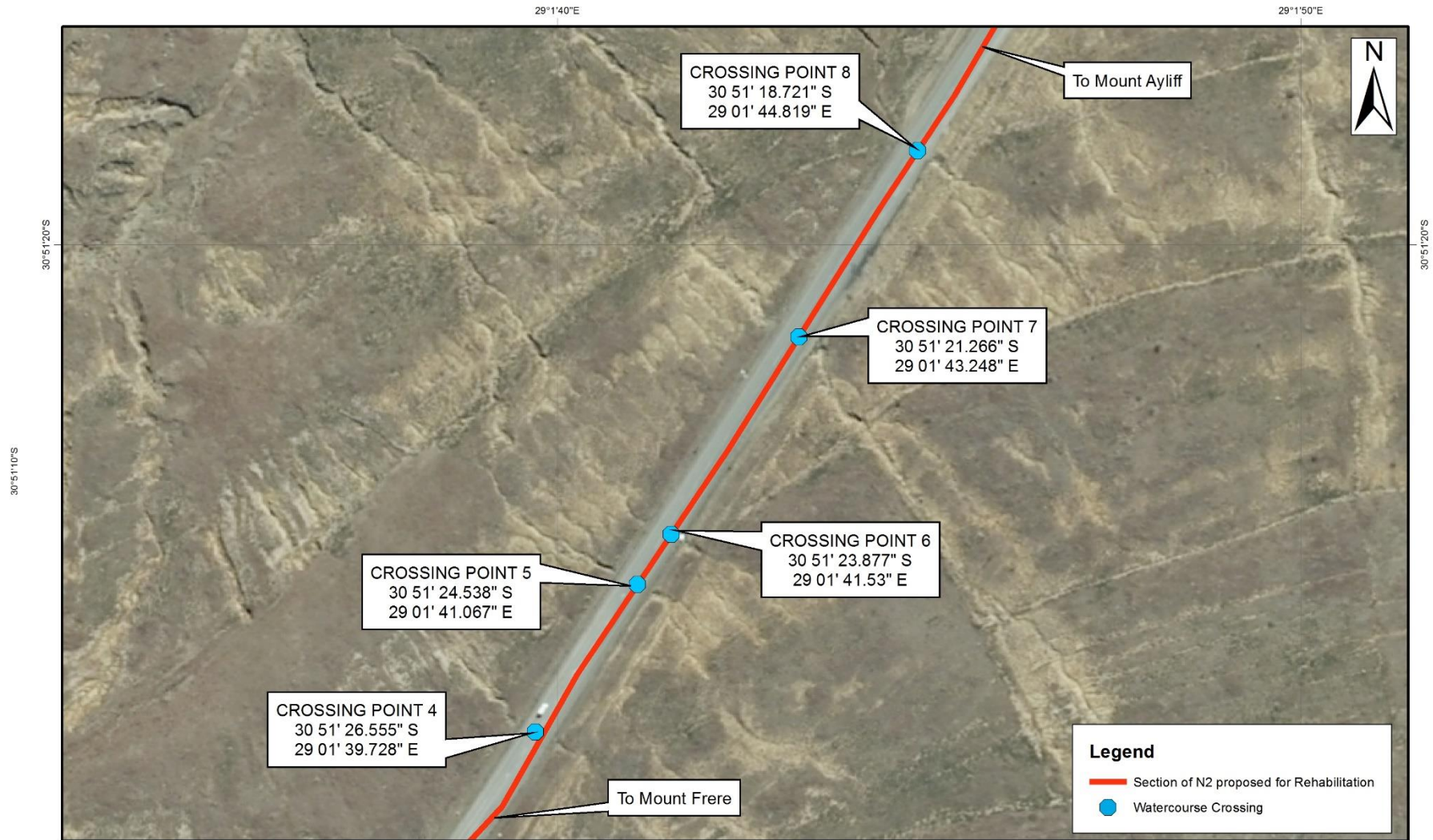


Figure:
WC 1

Scale:
1 : 3 500







Watercourse Crossings 4 to 8

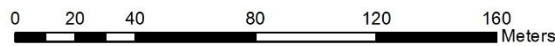
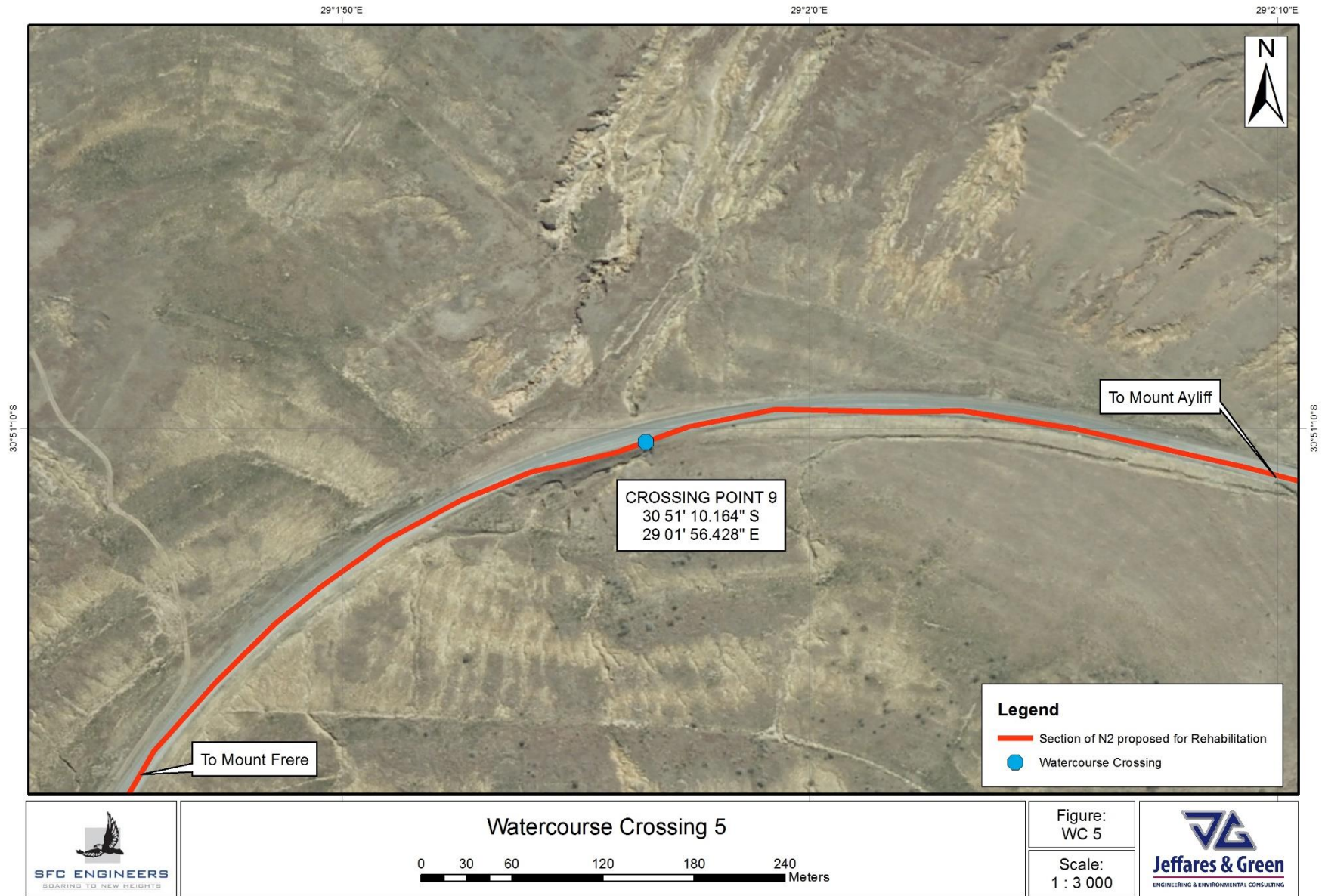


Figure:
WC 4 - 8

Scale:
1 : 2 000





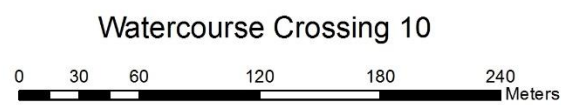
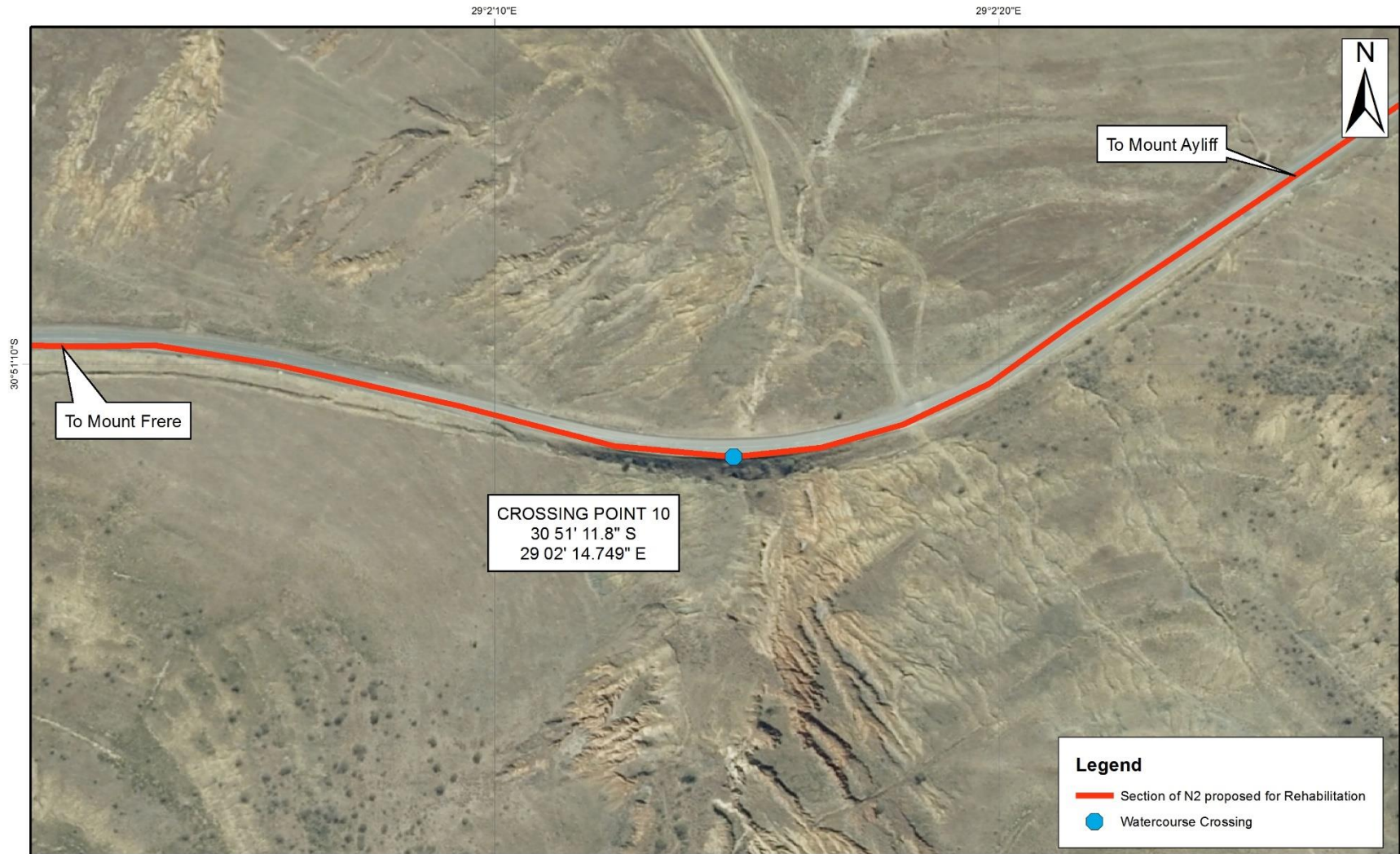


Figure:
WC 10

Scale:
1 : 3 000



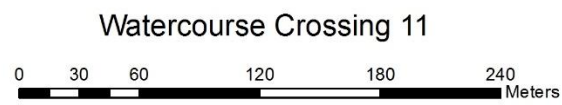
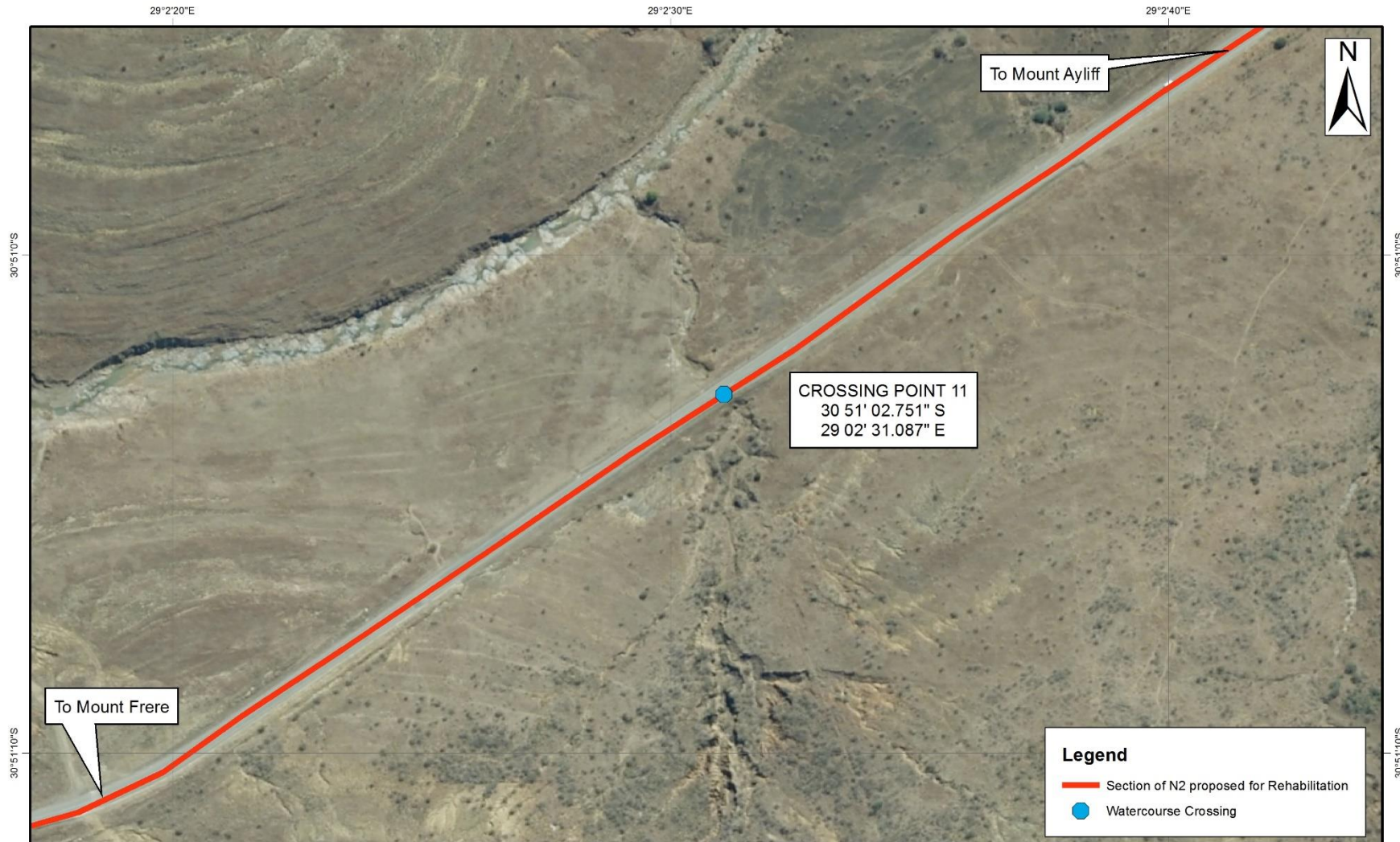
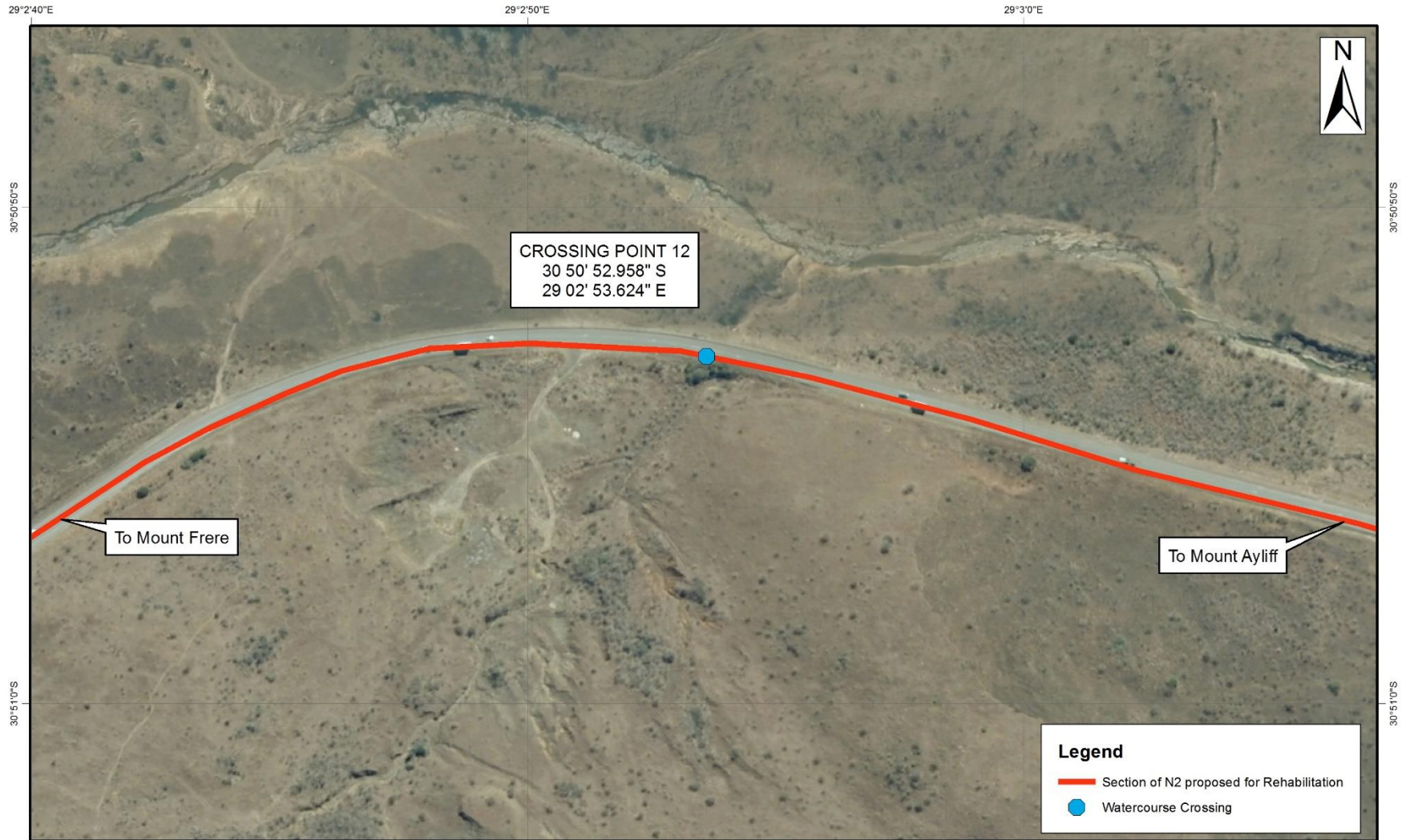


Figure:
WC 11

Scale:
1 : 3 000





Watercourse Crossing 12

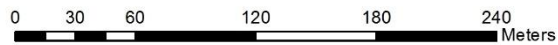
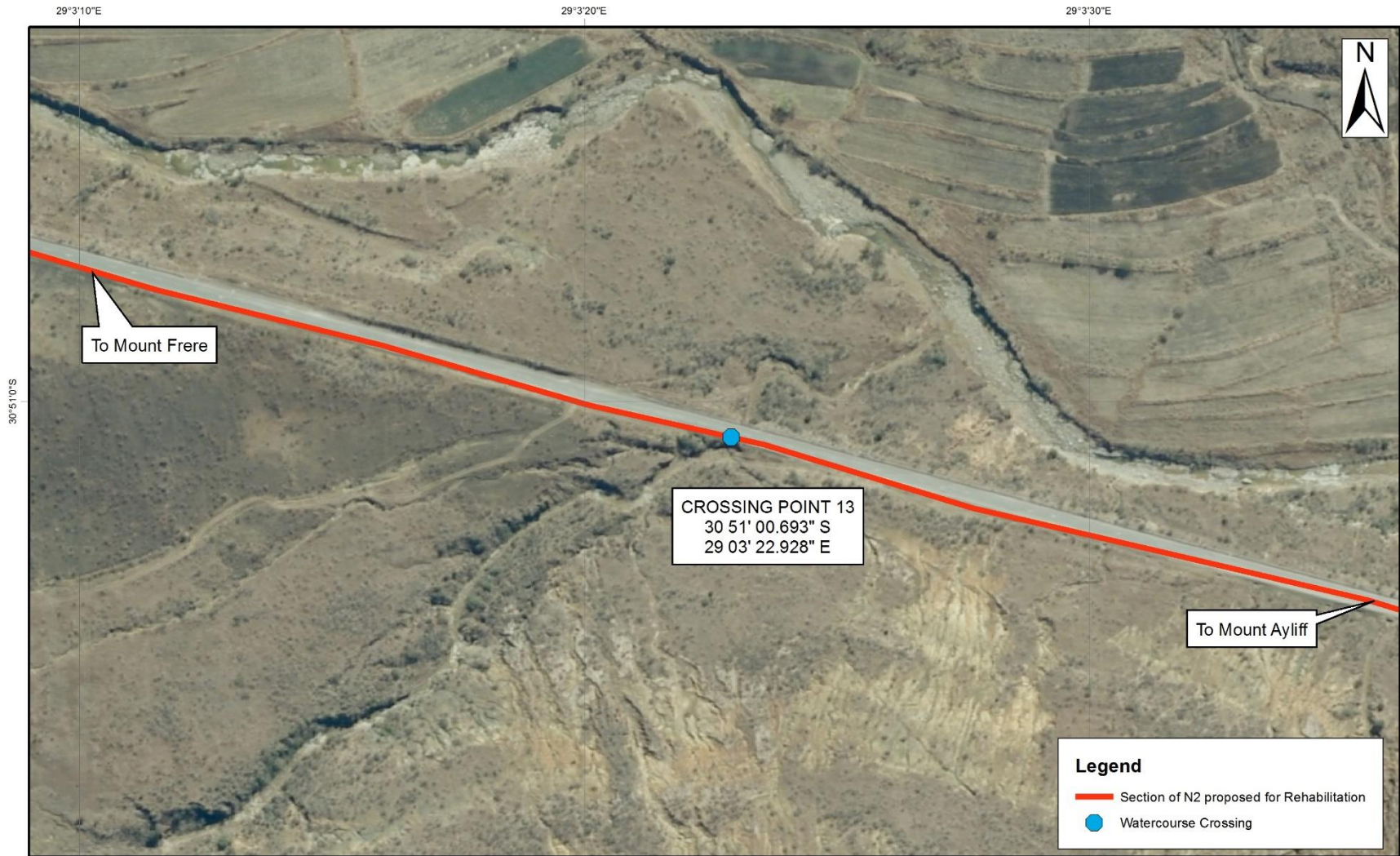


Figure:
WC 12

Scale:
1 : 3 000





Watercourse Crossing 13

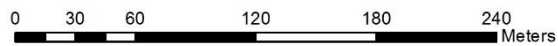


Figure:
WC 13

Scale:
1 : 3 000





Watercourse Crossing 14

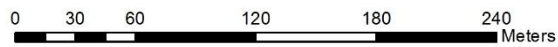
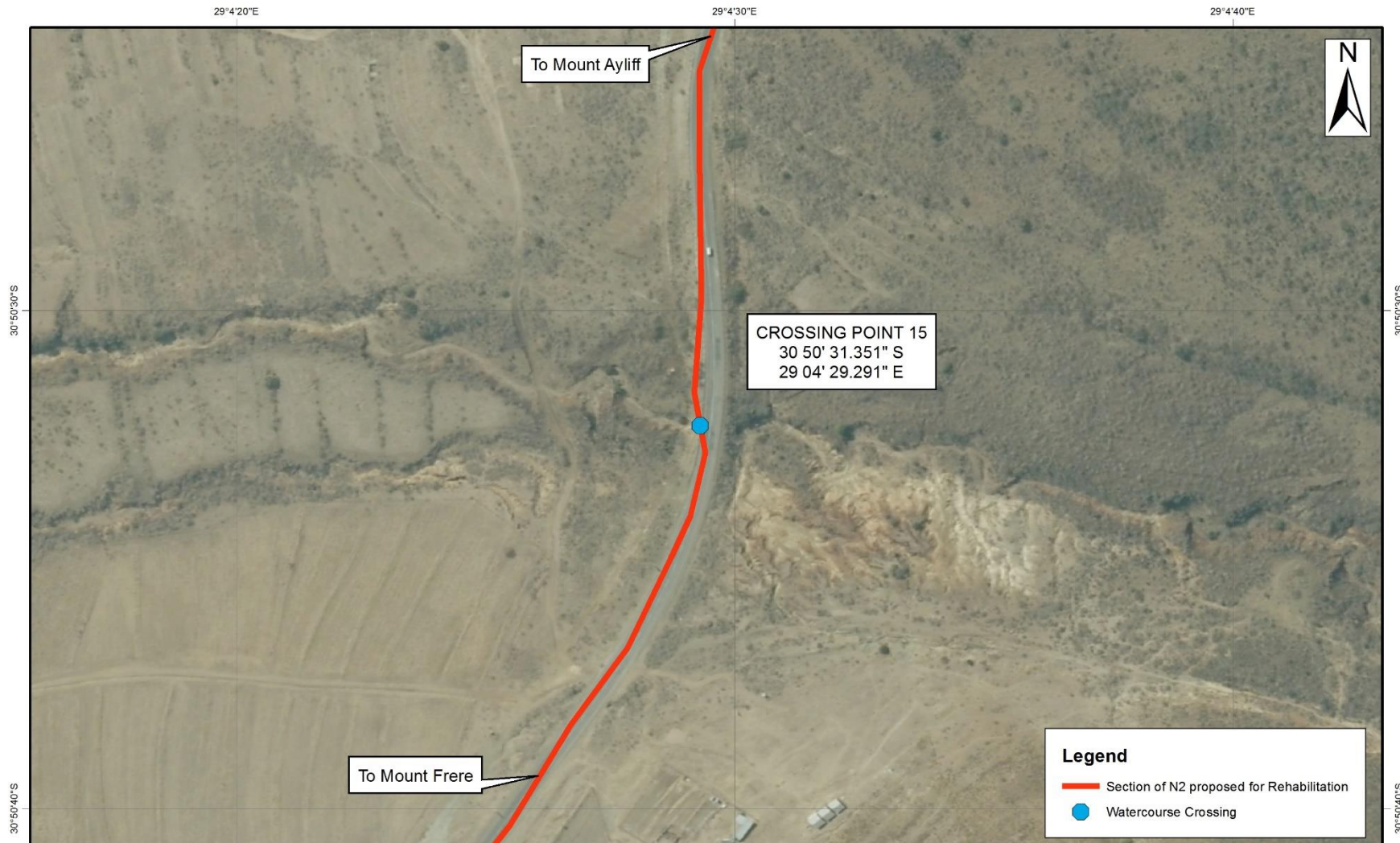


Figure:
WC 14

Scale:
1 : 3 000





Watercourse Crossing 15

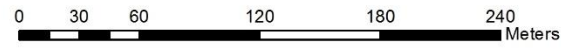


Figure:
WC 15

Scale:
1 : 3 000





Watercourse Crossing 16

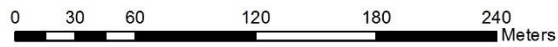
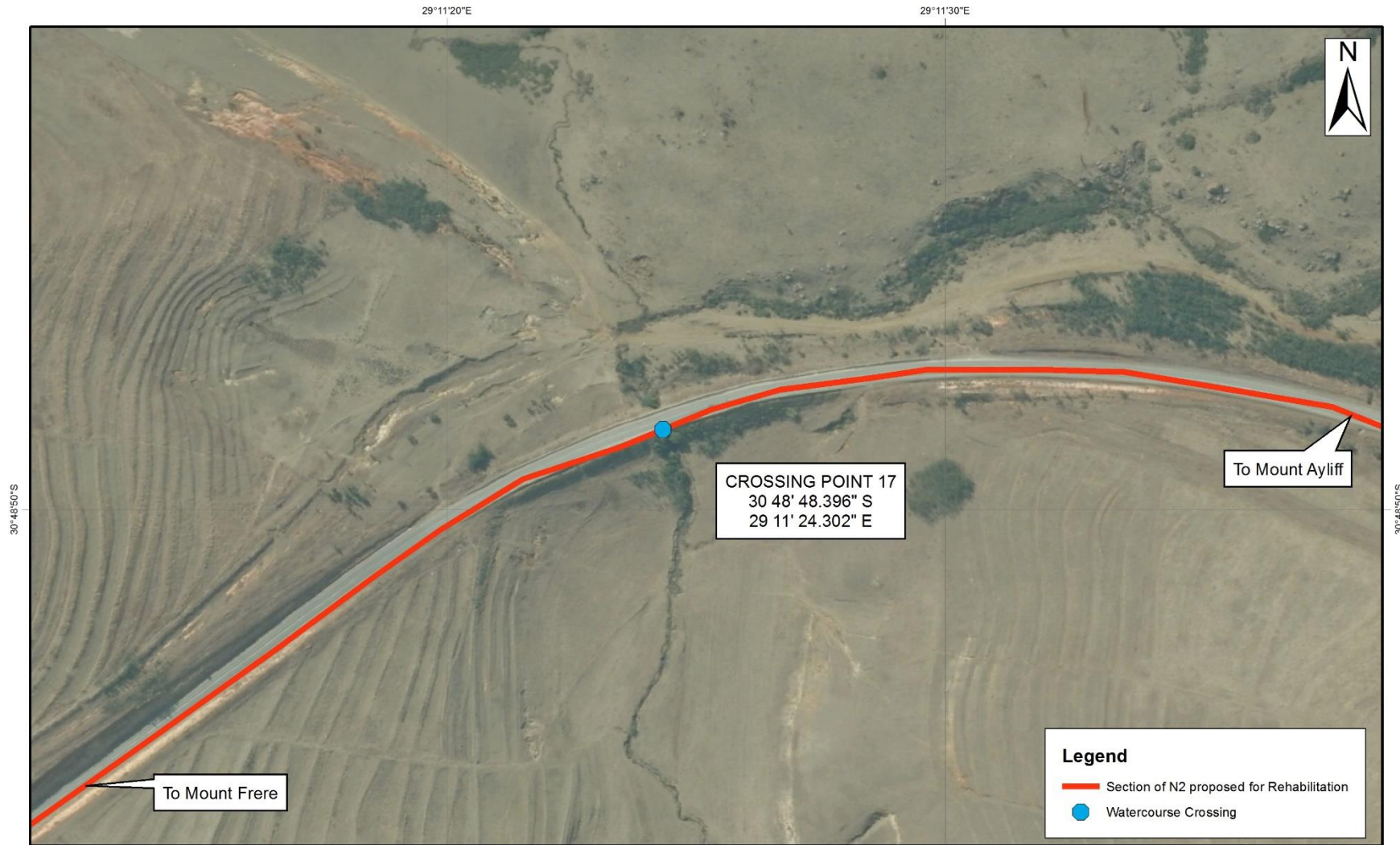


Figure:
WC 16

Scale:
1 : 3 000





Watercourse Crossing 17

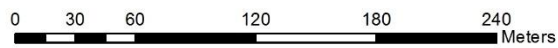


Figure:
WC 17

Scale:
1 : 3 000





Watercourse Crossing 18

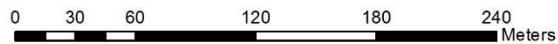
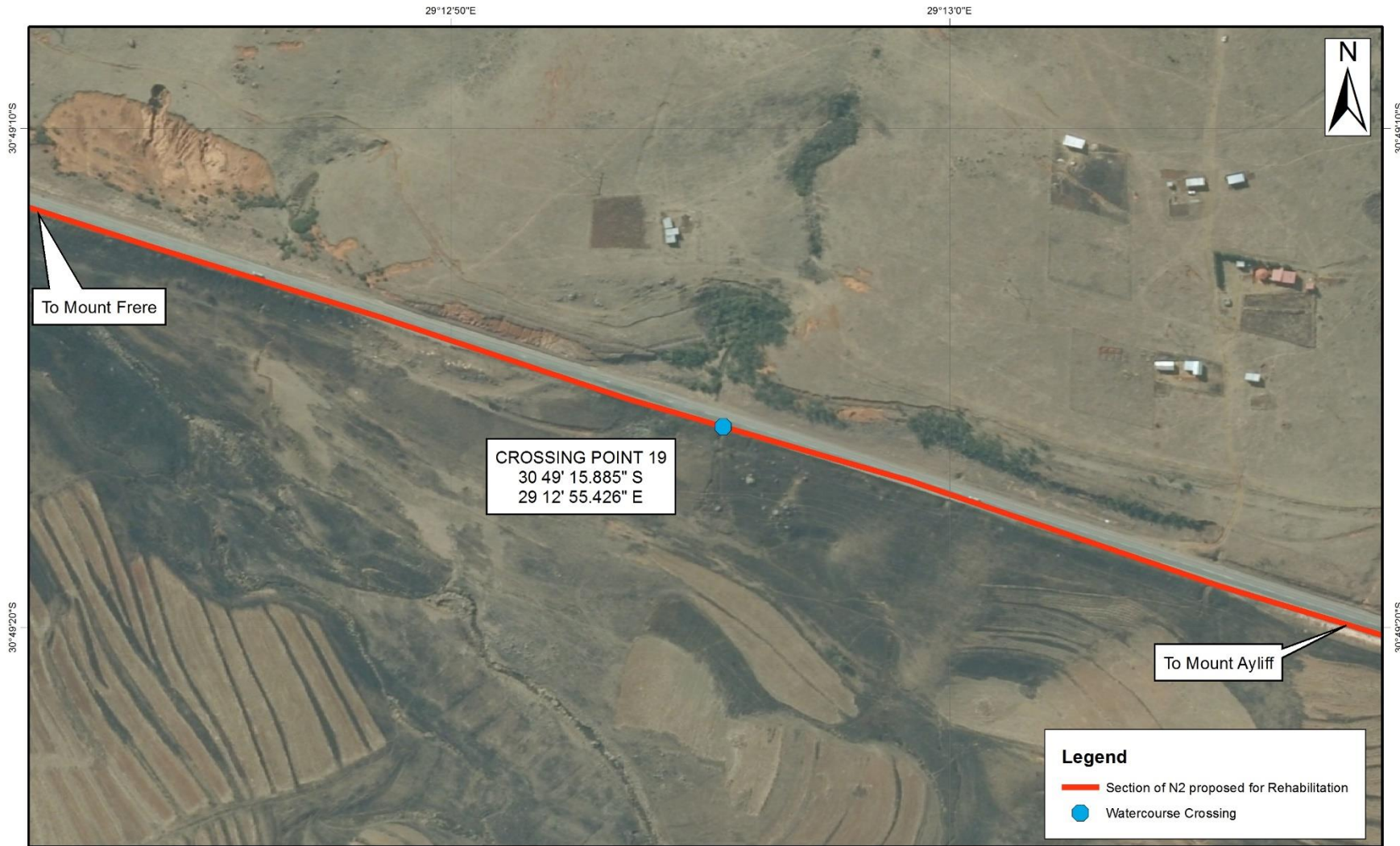


Figure:
WC 18

Scale:
1 : 3 000





Watercourse Crossing 19

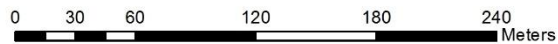


Figure:
WC 19

Scale:
1 : 3 000





Watercourse Crossing 20 and 21

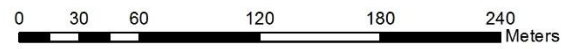


Figure:
WC 20 & 21

Scale:
1 : 3 000





Watercourse Crossing 22

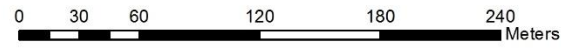


Figure:
WC 22

Scale:
1 : 3 000





Watercourse Crossing 23

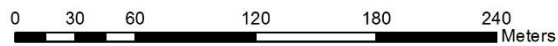


Figure:
WC 23

Scale:
1 : 3 000





Watercourse Crossing 24

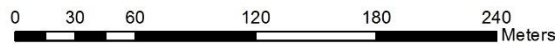


Figure:
WC 24

Scale:
1 : 3 000





Watercourse Crossing 25

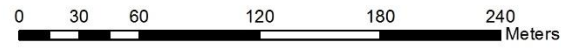


Figure:
WC 25

Scale:
1 : 3 000





Watercourse Crossing 26 and 27

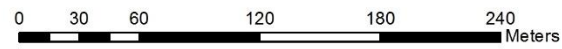


Figure:
WC 26 & 27

Scale:
1 : 3 000

