

**APPENDIX B – MAPS**  
**(MAP PACK)**





### MINING RIGHT APPLICATION

Hydrology Map

**Legend**

- Water Management Area
- Quaternary Catchments
- Mining Right Area
- Rivers

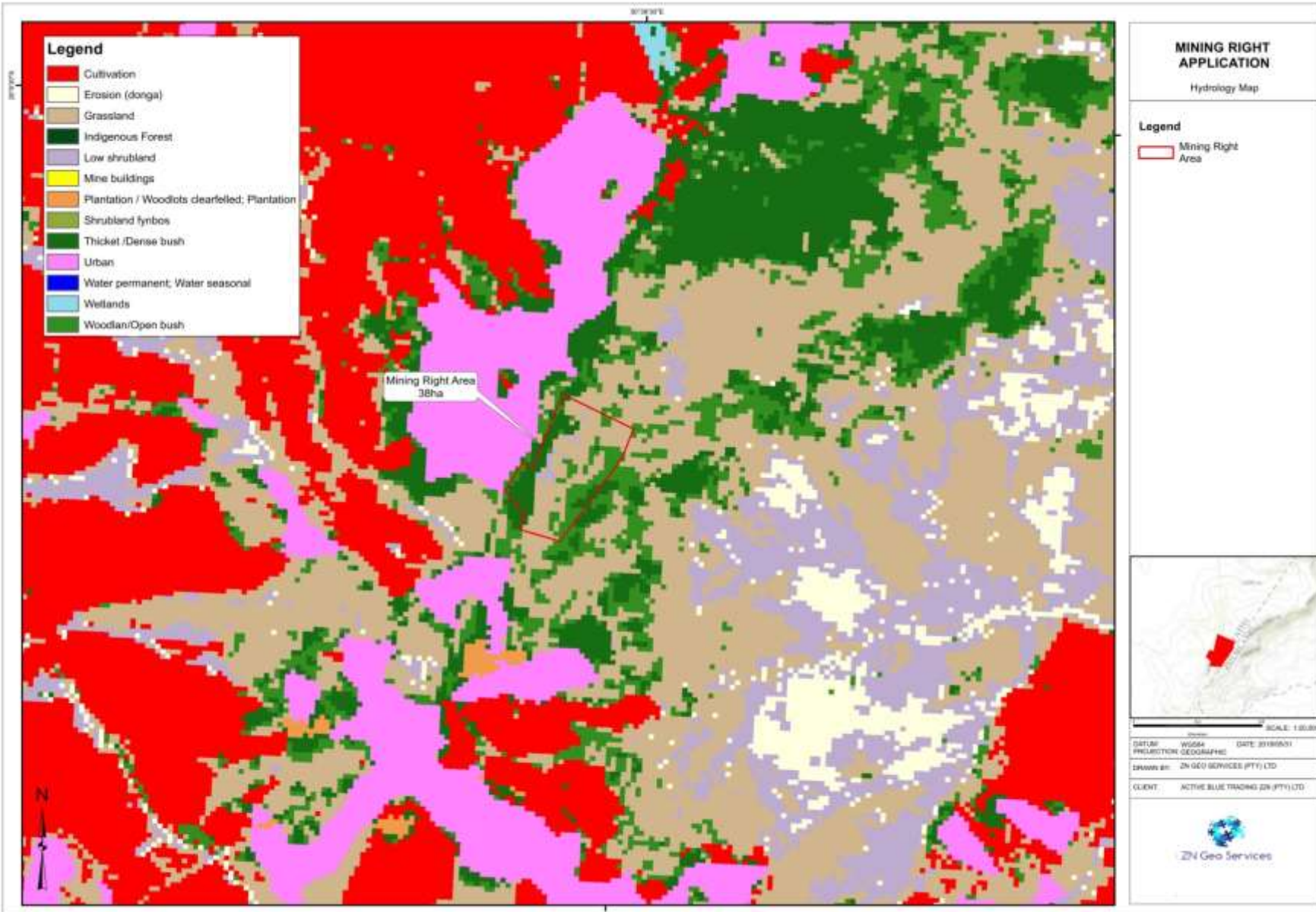
**NFEPA Wetland**

- Sub-Escarpment Grassland Group 4\_Flat
- Sub-Escarpment Grassland Group 4\_Seep

SCALE: 1:25,000

DATUM: WGS84	DATE: 2018/01/01
PROJECTION: GEODASIS	
DRAWN BY: ZN GEO SERVICES (PTY) LTD	
CLIENT: ACTIVE BLUE TRADING (Pty) Ltd	

ZN Geo Services







### MINING RIGHT APPLICATION

Locality Map

#### Legend

- Local Municipalities
- Parent Farm
- Farm Portion RE/17
- Rivers
- Roads**
  - Nat. Route
  - Main
  - Secondary

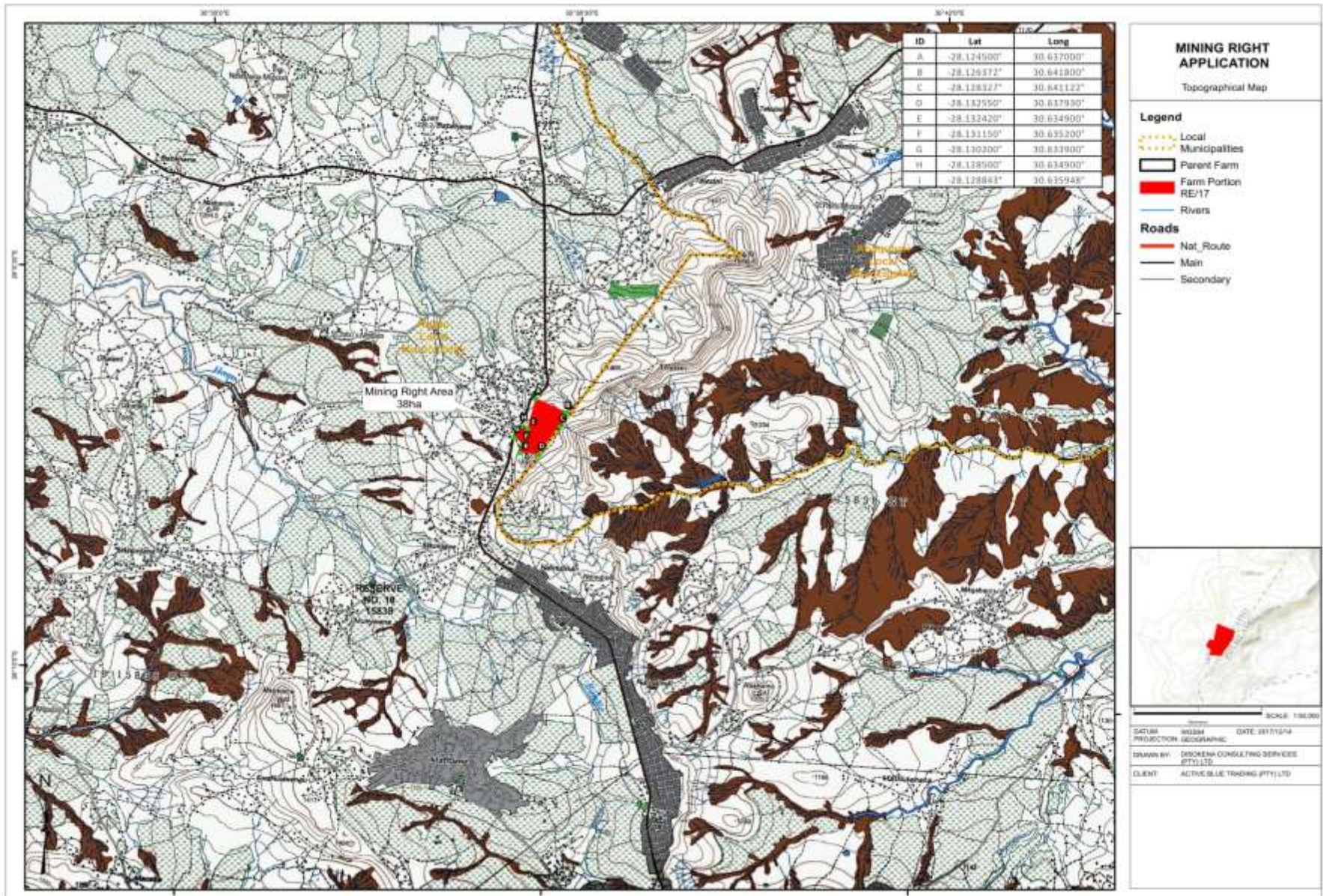


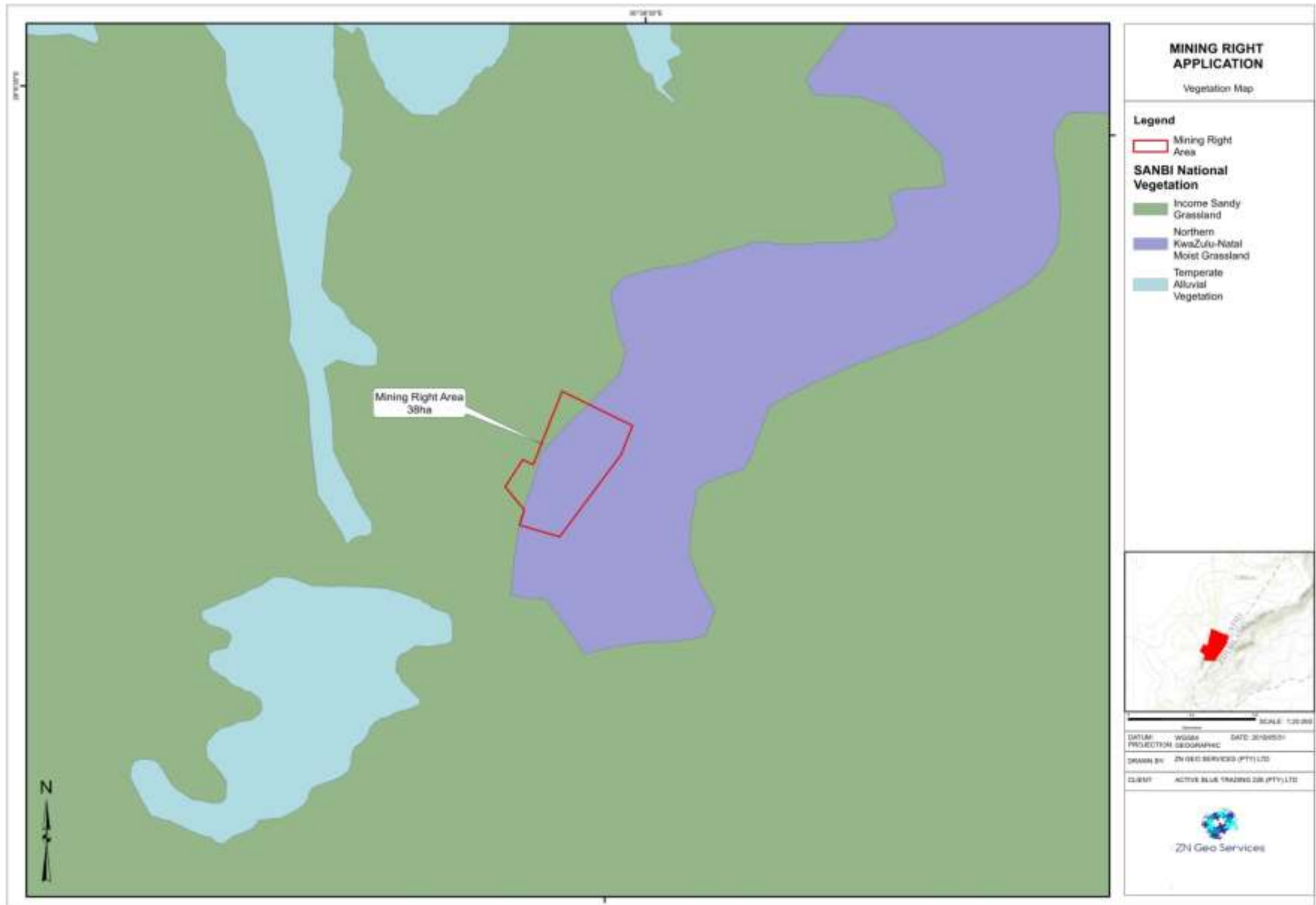
SCALE: 1:60,000

DATUM: WGS84 DATE: 2017/07/14  
 PROJECTION: GEOGRAPHIC  
 DRAWN BY: DISCHENA CONSULTING SERVICES  
 DTSL/LO  
 CLIENT: ACTIVE BLUE TRADING (PTY) LTD















# ACTIVE BLUE TRADING 226 (PTY) LTD

MINING RIGHT APPLICATION SITUATED ON

THE REMAINDER OF PORTION 17 OF THE FARM RESERVE NO 18 No. 15838

Nqutu Magisterial District

Nqutu Local Municipality

REG DIV: GT  
GEOLOGICAL PLAN



1:50 000



**UMHLABA  
GEOMATICS**

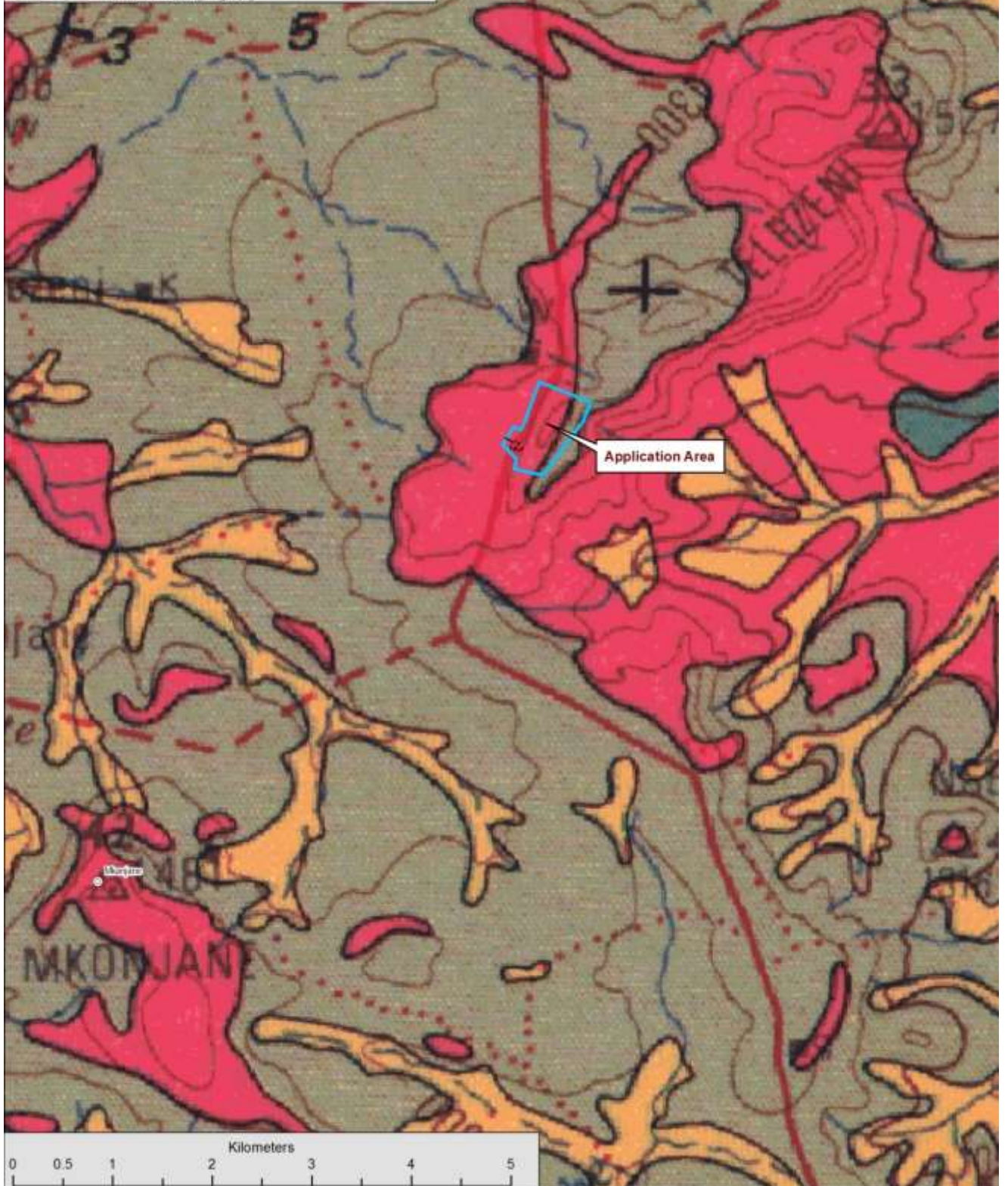
*"Turning DATA into INFORMATION"*

Email: garre@umhlabageomatics.co.za  
Tel: 0041 213 3190 Fax: 0041 213 3896  
84 Glaston Street, PO Box 56, Durban, 3008

© MMR/2017/Active Blue Trading

## LEGEND

 Application Area





# ACTIVE BLUE TRADING 226 (PTY) LTD

MINING RIGHT APPLICATION SITUATED ON

Nqutu Magisterial District

REG DIV: GT

LOCALITY PLAN

THE REMAINDER OF PORTION 17 OF THE FARM RESERVE NO 18 No. 15838

Nqutu Local Municipality



## UMHLABA GEOMATICS

"Turning DATA into INFORMATION"

Email: garron@umhlabageomatics.co.za

For: 02041 212 3190 Fax: 02041 218 0880

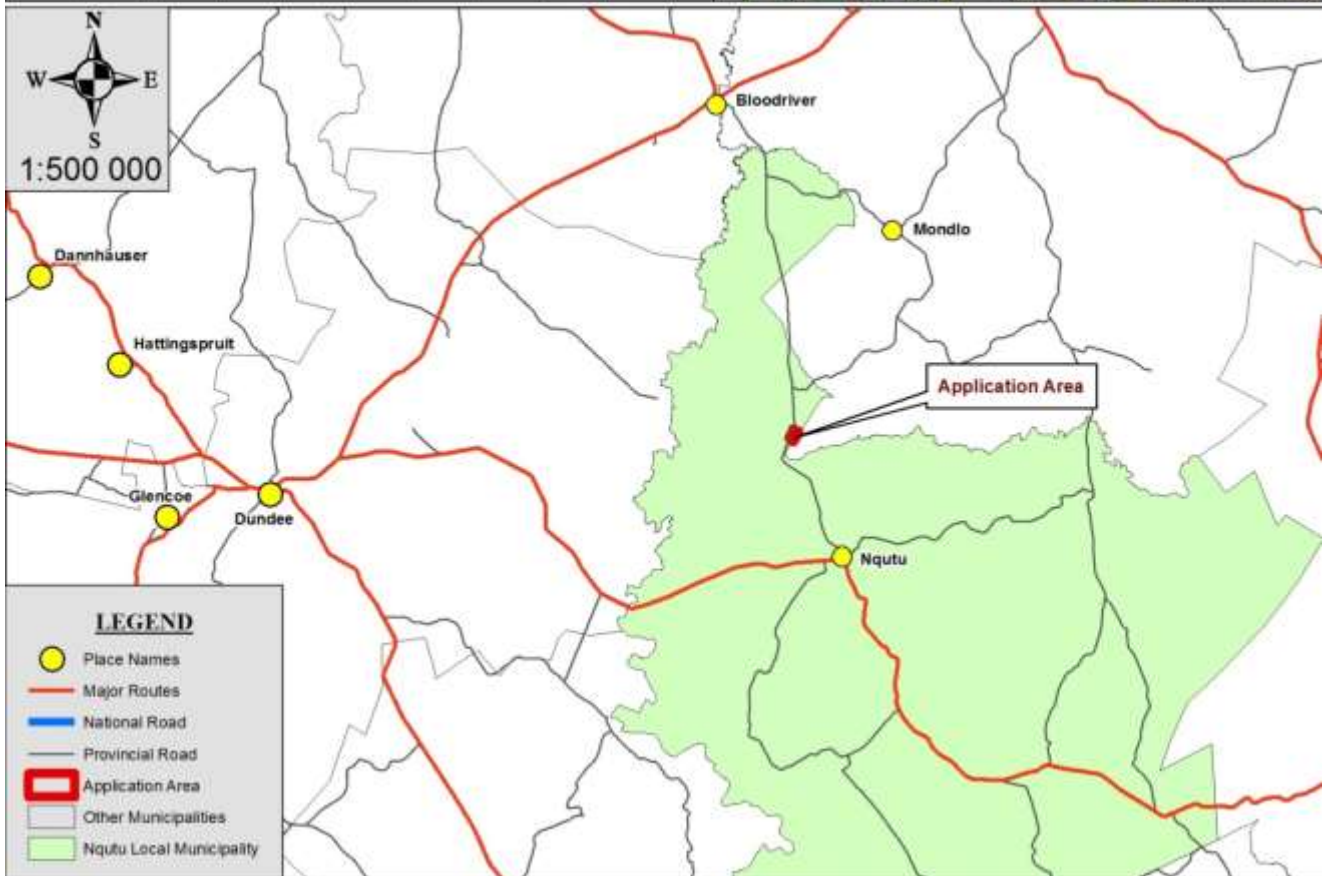
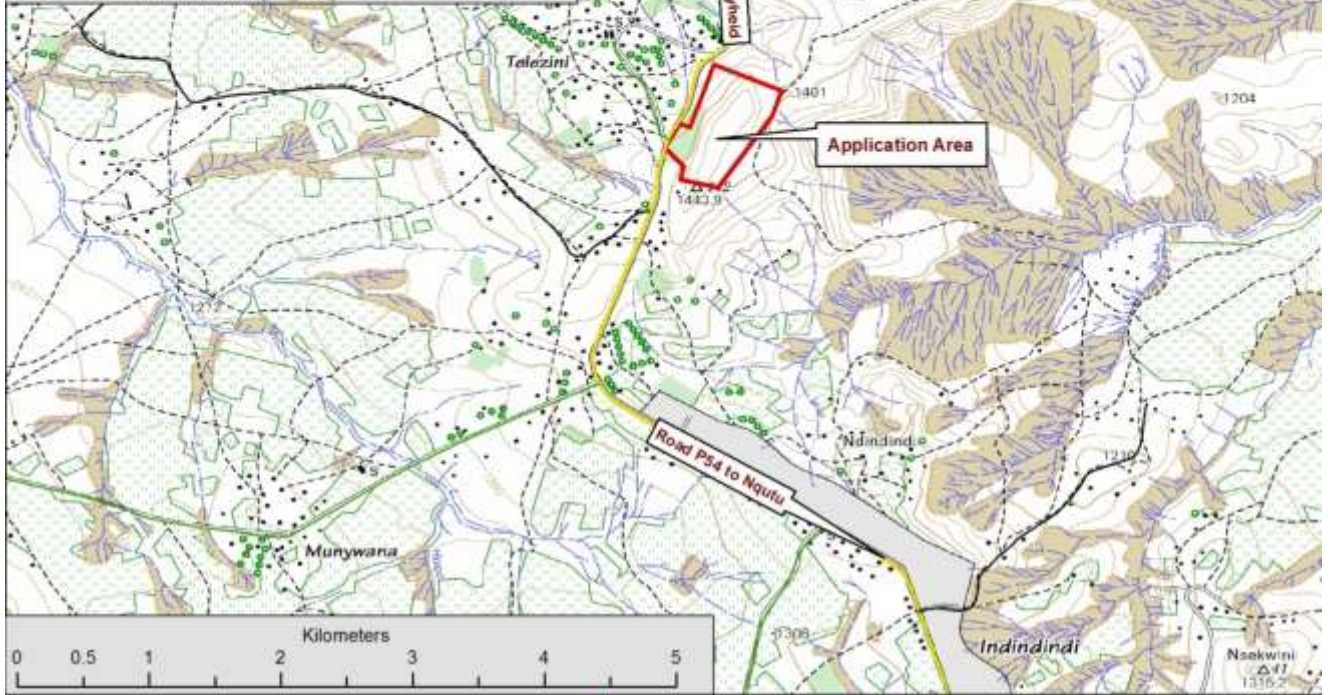
94 Leakeia Street, PO Box 56, Durban, 2008

1:50 000

© MIBBU/2017/Active Blue Trading

### LEGEND

Application Area





# ACTIVE BLUE TRADING 226 (PTY) LTD

Nqutu Magisterial District

REG DIV: GT  
SITE PLAN

MINING RIGHT APPLICATION SITUATED ON  
THE REMAINDER OF PORTION 17 OF THE FARM RESERVE NO 18 No. 15838

Nqutu Local Municipality

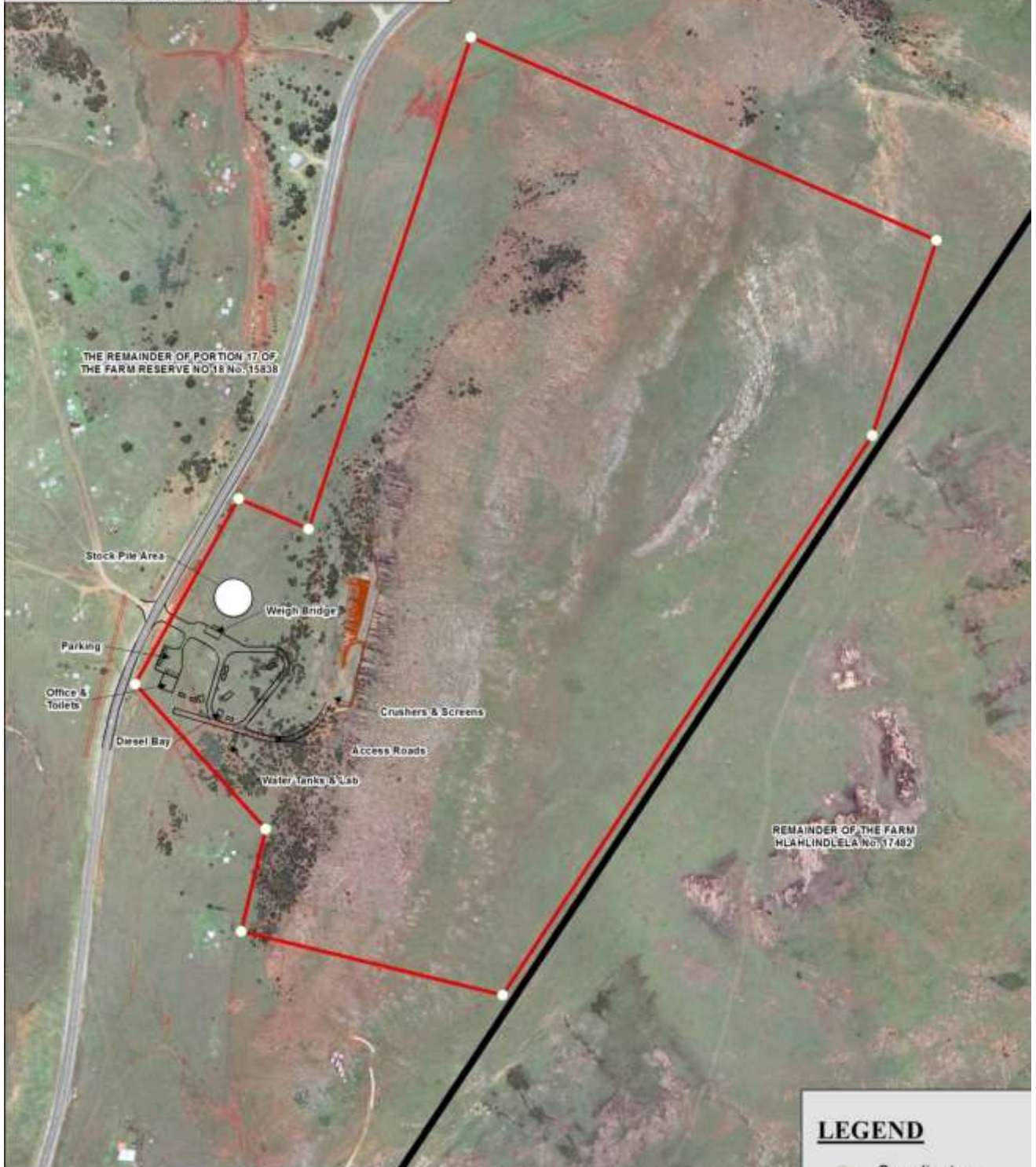


**UMHLABA  
GEOMATICS**

*"Turning DATA into INFORMATION"*

Email: garren@umhlaba-geomatiks.co.za  
Tel: 0330 212 2185 Fax: 0330 219 1836  
81 Leekhor Street, PO Box 36, Durban, 2000

© 2017 Active Blue Trading



## LEGEND

- Coordinates
- Application Area