

APPENDIX C: STAKEHOLDER ENGAGEMENT

- Meeting minutes of the focussed engagements with the Madibeng Ward 40 Local Councillor, Rustenburg Ward 32 Local Councillor and the Gotsube le Thotwe Communal Property Association;
- Site notice including photographic record and map illustrating the location of the site notices on 29th January 2020;
- Copies of advertisement placed in the Brits Pos newspaper on 30th January 2020;
- Background Information Document (BID) and proof of distribution
- Proof of Submission of NEMA Application
- Correspondence with the Land Claims Commissioner
- Written Comments Received from I&APs
- I&AP Database



INKOSI AND IMBASA PLATINUM (PTY) LTD

**CLOSURE OF THE HARTEBESPOOR B 410 JQ PROSPECTING RIGHTS
MINUTES OF THE FOCUSED-MEETING HELD AT THE GOTSUBE LE THOTWE COMMUNAL PROPERTY
ASSOCIATIONS OFFICES**

DATE	22 January 2020
VENUE:	Gotsube le Thotwe Communal Property Associations (CPA) Offices, in Sonop
SLR COMPANY:	SLR Consulting (Africa) (Pty) Ltd (SLR)
PROJECT NUMBER:	710.09004.00013/710.09007.00007
PURPOSE:	<p>The purpose of the focussed-meeting was</p> <ul style="list-style-type: none">• To provide information on the Prospecting Right (PR) closures;• To provide an overview of each of the projects and related environmental assessment processes;• To provide an overview of the proposed closure applications;• To provide I&APs with an opportunity to:<ul style="list-style-type: none">– Raise any issues and concerns (both positive or negative); and– Provide input on any environmental sensitivities & potential impacts.• To outline the way forward for the projects.
ATTENDANCE:	An attendance register is presented in Appendix 2.

1. OPEN AND INTRODUCTION

Mr. Webster Diale from Impala Platinum Limited (Impala) opened the meeting and introduced himself as the facilitator for the meeting. He thanked the attendees for availing themselves for the meeting. The meeting was attended by Ms. Francinah Tihapane (CPA representative), Mr. Webster Diale (Impala), Ms. Reinett Mogotshi and Mr. Clive Phashe (both from SLR).

2. PRESENTATION

Reinett Mogotshi gave a presentation which provided an overview of the proposed closure applications, the project areas, potential impacts and the related environmental authorisation application processes. Copies of the meeting presentation were made available and handed out to attendees at the meeting. A copy of the presentation is included in Appendix 1.

3. COMMENTS RAISED

With the exception of a few general comments and questions requiring clarification, no issues were raised during the meeting. The questions/comments raised have been recorded in table 1 below. Where a response was provided, the response has been included in the table.

TABLE 1: COMMENTS RAISED DURING THE FOCUSED MEETING AND RESPONSES GIVEN BY THE PROJECT TEAM

Name	Issues Raised	Response given by Project Team (SLR/Implats)
Ms. Francinah Tlhapane	It would be better in terms of public participation if a community meeting was held to present the project. This will allow for the illiterate and elderly people to participate in the process and understand what the project is about.	Noted, this request has been taken into consideration (SLR).

4. WAY FORWARD

The way forward (agreed to by the attendees) is outlined below.

- For the public participation, SLR will work through the CPA committee.
- Newspaper adverts will be placed in the Brits Pos newspaper;
- Site Notices will be placed within the communities and at the prospecting right boundary;
- Background Information Documents will be placed at the Segwaelane community clinic and other conspicuous areas for the community members to review;
- Hard copies of the Basic Assessment Report (BAR) will be placed at the Segwaelane community clinic and other conspicuous areas for the community members to review;
- Summaries of the BAR will be placed at the clinic and other conspicuous areas for the community members to review; and
- Inkosi Platinum, Imbasa Platinum and SLR to consider organising a community meeting to share the project information with members of the community.

5. CLOSE

Webster Diale and Reinett Mogotshi thanked attendees for their input and for attending the meeting. The meeting was closed at 12H30.

APPENDIX 1: PRESENTATION

INKOSI MINING AND IMBASA PLATINUM (PTY) LTD

**THE CLOSURE OF THE THE HARTEBEEPOORT B 410
JQ PROSPECTING RIGHTS**

KEY STAKEHOLDER MEETING

JANUARY 2020

global **environmental** and **advisory** solutions



AGENDA

- Welcome and opening
- Overview of the prospecting activities
- Environmental process overview
- Proposed public participation process
- Discussion
- Close

PROSPECTING RIGHT CLOSURES

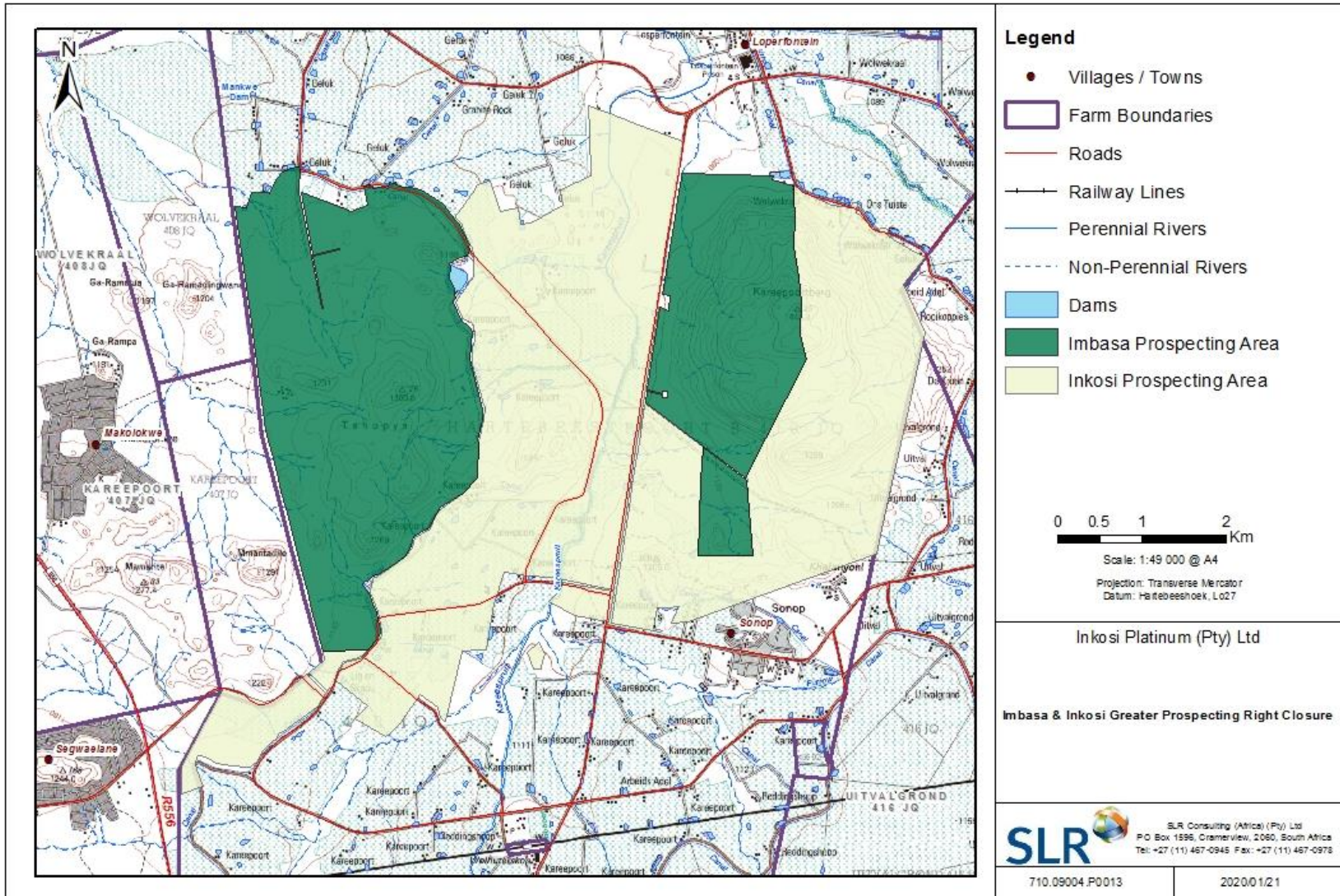
Inkosi Mining (Pty) Limited and Imbasa Platinum (Pty) Limited hold two prospecting rights.

- **Prospecting right numbers:** NW30/5/1/1/3/2/2/1/150 PR and NW30/5/1/1/2/424 PR
- **Properties:** Various portions of the farm Hartebeespoort B 410 JQ
- **Minerals covered in PR:** Platinum group metals, chrome, copper and nickel ore.
- **Location:** The prospecting areas are approximately 7 km from Brits within the Madibeng Local Municipality and Bojanala Platinum District Municipality in the North West Province

- After completion of the prefeasibility work, the Inkosi and Imbasa Boards made the decision not to apply for a mining right and commence mining, as it was found that the project is not economically viable.

- Inkosi/Imbasa have abandoned their prospecting rights on 16 August 2019.

LOCAL SETTING



ENVIRONMENTAL PROCESS (1)

Permissions required:

Application	Authorisation required	Applicable legislation	Competent authority
Closure of the Inkosi and Imbasa prospecting rights	PR closure certificate	Mineral and Petroleum Resources Development Act No. 28 of 2002	Department of Mineral Resources
	Environmental Authorisations	National Environmental Management Act (107 of 1998) (NEMA) 2014 EIA regulations (Chapter 5, part 2 application process)	

ENVIRONMENTAL PROCESS (2)

Regulatory authorities

- North West Department of Mineral Resources (DMR)
- Development, Environment, Conservation and Tourism (DEDECT)
- North West Department of Water and Sanitation (DWS)
- North West Department of Rural Development and Land Reform (NWDRDLR)
- South Africa Heritage Resource Agency (SAHRA) and/or North West Provincial Heritage Resource Authority (NWPHRA)
- North West Department of Agriculture, Forestry and Fisheries (DAFF)

Local authorities

- Madibeng Local Municipality (including ward councillor)
- Bojanala Platinum District Municipality

Tribal authority

- Bapo Ba Mogale

ENVIRONMENTAL BASELINE

Aspect	Description
Geology	Various lithologies of the Rustenburg Layered Suites of the Bushveld Igneous Complex
Topography	Gentle undulating plains and flat terrain to the west with prominent hills to the east. The altitude ranges from between approximately 1080 and 1445 metres above mean sea level
Soils	Strongly structured black soils known as Calcic Vertisols and Umbric Leptosols. Calcic Vertisols have a very high clay content and are suitable for agriculture provided that there is plenty of rainfall or irrigation water.
Vegetation	Savanna Biome consisting of the Marikana Thornveld and the Norite Koppies Bushveld vegetation types. The prospecting right areas are classified as Critical Biodiversity Areas and an Ecological Support Areas and are considered an important habitat for vultures.
Surface Water	Located within the upper reaches of the A21J quaternary catchment of the Crocodile West. The prospecting areas are mostly dominated by non-perennial tributaries. The perennial Kareespruit, which is moderately modified transverses through the boundary of the Inkosi and is adjacent to the Imbasa prospecting right area.
Heritage	Heritage resources identified within the prospecting right areas, including graveyards are of high significance and are protected in terms of the National Heritage Resources Act (NHA) (No 25 of 1999).
Land use	Mixture of natural bushveld, farming, residential and mining activities.

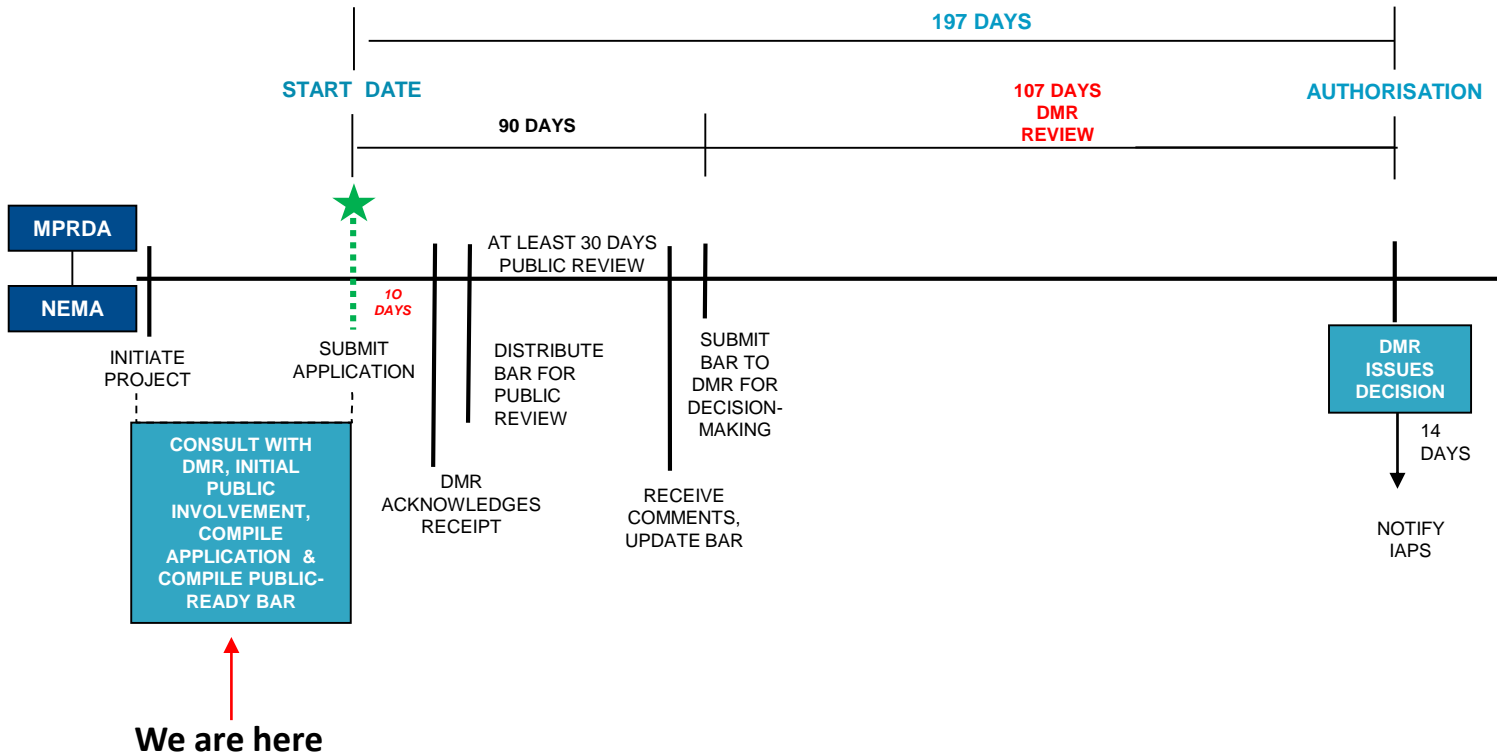
POTENTIAL IMPACTS

- Loss of biodiversity and pre-mining land use if any residual contamination exists (considered unlikely) and if revegetation isn't successful (unknown).
- Dust (if site not appropriately rehabilitated).
- Contractor loses social and economic benefits by not continuing with the prospecting, but assumed that contractor would find contracts elsewhere.
- Resource becomes available for other potential prospectors.

PUBLIC PARTICIPATION

- Hold focussed meetings Tribal authority, ward councilors and representatives from the Communal Property Association (CPA).
- Place site notices on the boundary of PR areas and along the access roads.
- Advertise in one local newspaper i.e. Brits Pos.
- Distribution of notification letters by hand to landowners.
- Distribution of BIDs via email to Interested and Affected Parties (I&APs) on database. SMS notifications.
- Site notices, I&AP notification letters, BID and Basic Assessment Report (BAR) summaries translated into Setswana.
- Recommendation for venues for review of the BAR by the public.
- Commenting authorities will receive hard copies of the BARs to review and comment.
- BARs will be available on SLR website.
- Notification to I&APs of DMR decision via email.

TIMEFRAME



GENERAL DISCUSSION, COMMENTS AND QUERIES

CLOSE

Project Manager and Public Participation Facilitator: Reinett Mogotshi
Project and Public Participation support: Clive Phashe

SLR Consulting (South Africa) (Pty) Ltd
(011) 467 0945 (Tel) and/or (011) 467 0978 (Fax)
Email: rmogotshi@slrconsulting.com

Thank you for your contribution.

APPENDIX 2: ATTENDANCE REGISTER

Name and Surname	Community/organisation	Postal address	Contact numbers	E-mail
Clive Phashe	SLR	PO Box 1596, Cramerview, 2060	0114670945	cphashe@slrconsulting.com
Reinett Mogotshi	SLR	PO Box 1596, Cramerview, 2060	0114670945	rmogotshi@slrconsulting.com
Webster Diale	Impala Platinum		0145696880	Webster.diale@implats.co.za
Francina Tlhapane	Gotsube le Thotwe CPA representative	PO Box 3777 Brits 0580	0791989131	Keabetswetlhapane37@gmail.com



INKOSI AND IMBASA PLATINUM (PTY) LTD

**CLOSURE OF THE HARTEBEEPOOR B 410 JQ PROSPECTING RIGHTS
MINUTES OF THE FOCUSED-MEETING HELD AT THE ENTRANCE OF SEGWAEELANE AREA**

DATE	22 January 2020
VENUE:	Entrance of Segwaelane Area, off the R556 road
SLR COMPANY:	SLR Consulting (Africa) (Pty) Ltd (SLR)
PROJECT NUMBER:	710.09004.00013/710.09007.00007
PURPOSE:	The purpose of the focussed-meeting was : <ul style="list-style-type: none">• To provide information on the Prospecting Right (PR) closures;• To provide an overview of each of the projects and related environmental assessment processes information;• To provide an overview of the proposed applications;• To provide I&APs with an opportunity to:<ul style="list-style-type: none">– Raise any issues and concerns (both positive or negative); and– Provide input on any environmental sensitivities & potential impacts.• To outline the way forward for the projects.
ATTENDANCE:	An attendance register is presented in Appendix 2.

1. OPEN AND INTRODUCTION

Webster Diale from Impala Platinum Limited (Impala) opened the meeting and introduced himself as the facilitator for the meeting. He thanked the attendees for availing themselves for the meeting. The meeting was attended by Mr. Aubrey Molotsi (Councillor of Ward 32), Mr. Steve Maimane (Community member), Mr. Webster Diale (Impala), Ms. Reinett Mogotshi and Mr. Clive Phashe (both from SLR).

2. PRESENTATION

Reinett Mogotshi gave a presentation which provided an overview of the proposed applications, project areas, potential impacts and the related environmental authorisation application processes. Copies of the meeting presentation were made available and handed out to attendees at the meeting. A copy of the presentation is included in Appendix 1.

3. COMMENTS RAISED

With the exception of a few general comments and questions requiring clarification, no issues were raised during the meeting. The questions/comments raised have been recorded in table 1 below. Where a response was provided, the response has been included in the table.

TABLE 1: COMMENTS RAISED DURING THE FOCUSED MEETING AND RESPONSES GIVEN BY THE PROJECT TEAM

Name	Issues Raised	Response given by Project Team (SLR/Implats)
Mr. Steve Maimane	Where is Inkosi and Imbasa Platinum generally based?	Inkosi and Imbasa Platinum are not existing mines. They are companies that formed a partnership with Impala Platinum Holdings Limited (Implats) to undertake prospecting activities in the area. The Inkosi and Imbasa Boards made the decision not to apply for a mining right and commence mining, as it was found that the projects are not economically viable. The closure of the prospecting right areas will allow for third party prospectors to apply for the prospecting rights in this area (Implats).
Mr. Aubrey Molotsi	Why are you doing public participation?	An environmental assessment process is required for Inkosi/Imbasa to comply with the legal requirements of closing the prospecting rights. Public participation is a legally required part of this environmental assessment process which supports the closure applications. (SLR)
Mr. Steve Maimane	Where are the projects located? We would like to get an understanding of the locations of the projects to ensure that the information presented to the community is accurate.	The Inkosi and Imbasa prospecting right areas are located within the Madibeng Local Municipality, north of Sonop and east of Segwaelane area. The prospecting right areas are directly adjacent to Ward 28 of the Rustenburg Local Municipality. The attached presentation includes a locality map to help with understanding the location of the prospecting activities. (SLR)
Mr. Aubrey Molotsi	It is important to manage public participation in this area given the different stakeholders that exist.	Noted, the different stakeholders will be consulted as part of the public participation process. (SLR)

4. WAY FORWARD

The way forward presented at the focussed meeting is outlined below.

- Newspaper adverts will be placed in the Brits Pos newspaper;
- Site Notices will be placed within the communities and at the prospecting right boundary;
- Background Information Documents will be placed at the Segwaelane community clinic and other conspicuous areas for the community members to review;
- Hard copies of the Basic Assessment Report (BAR) will be placed at the Segwaelane community clinic and other conspicuous areas for the community members to review; and
- Summaries of the BAR will be placed at the clinic and other conspicuous areas for the community members to review.

5. CLOSE

Webster Diale and Reinett Mogotshi thanked attendees for their input and for attending the meeting. The meeting was closed at 11H00.

APPENDIX 1: PRESENTATION

INKOSI MINING AND IMBASA PLATINUM (PTY) LTD

**THE CLOSURE OF THE THE HARTEBEEPOORT B 410
JQ PROSPECTING RIGHTS**

KEY STAKEHOLDER MEETING

JANUARY 2020

global **environmental** and **advisory** solutions



AGENDA

- Welcome and opening
- Overview of the prospecting activities
- Environmental process overview
- Proposed public participation process
- Discussion
- Close

PROSPECTING RIGHT CLOSURES

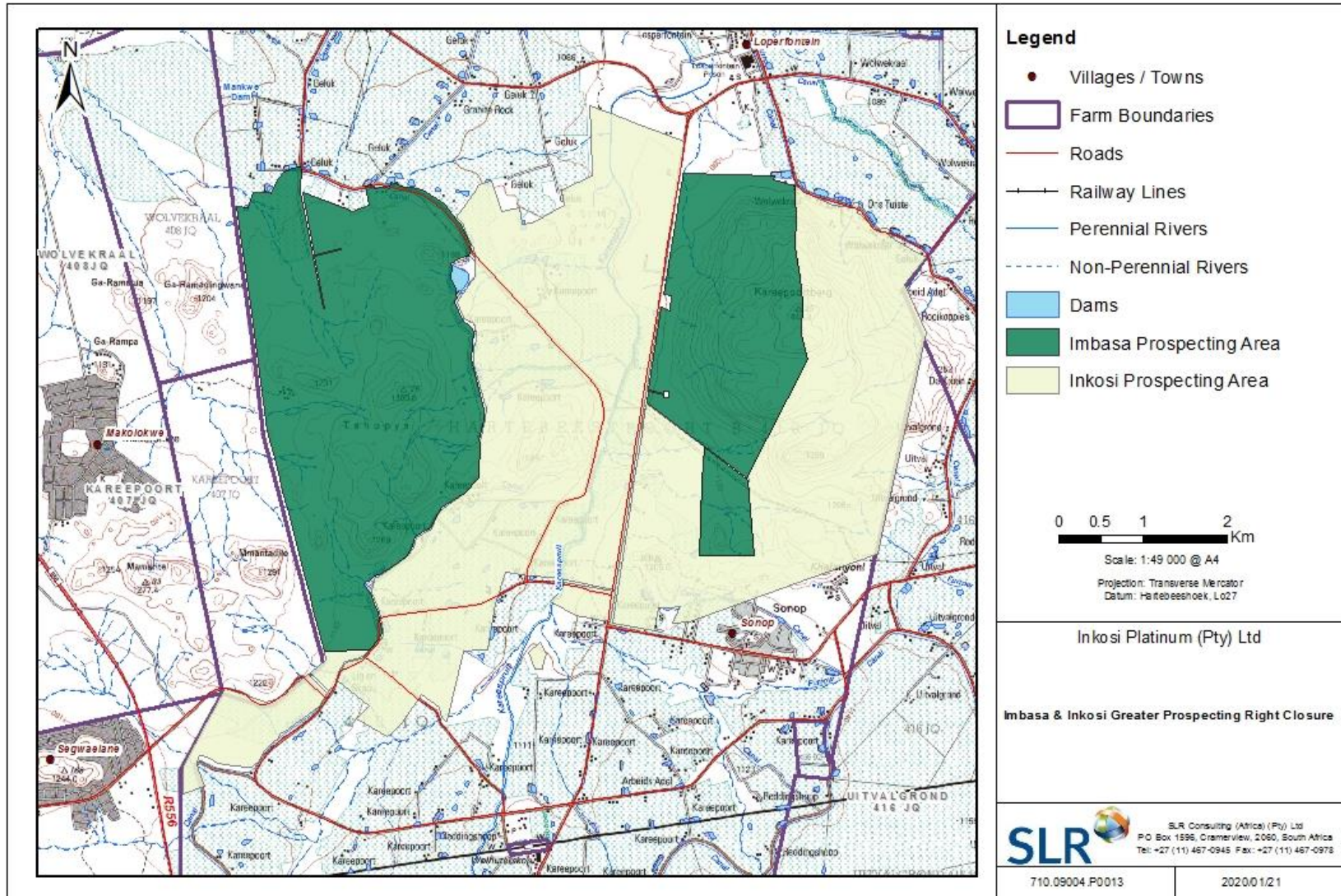
Inkosi Mining (Pty) Limited and Imbasa Platinum (Pty) Limited hold two prospecting rights.

- **Prospecting right numbers:** NW30/5/1/1/3/2/2/1/150 PR and NW30/5/1/1/2/424 PR
- **Properties:** Various portions of the farm Hartebeespoort B 410 JQ
- **Minerals covered in PR:** Platinum group metals, chrome, copper and nickel ore.
- **Location:** The prospecting areas are approximately 7 km from Brits within the Madibeng Local Municipality and Bojanala Platinum District Municipality in the North West Province

- After completion of the prefeasibility work, the Inkosi and Imbasa Boards made the decision not to apply for a mining right and commence mining, as it was found that the project is not economically viable.

- Inkosi/Imbasa have abandoned their prospecting rights on 16 August 2019.

LOCAL SETTING



ENVIRONMENTAL PROCESS (1)

Permissions required:

Application	Authorisation required	Applicable legislation	Competent authority
Closure of the Inkosi and Imbasa prospecting rights	PR closure certificate	Mineral and Petroleum Resources Development Act No. 28 of 2002	Department of Mineral Resources
	Environmental Authorisations	National Environmental Management Act (107 of 1998) (NEMA) 2014 EIA regulations (Chapter 5, part 2 application process)	

ENVIRONMENTAL PROCESS (2)

Regulatory authorities

- North West Department of Mineral Resources (DMR)
- Development, Environment, Conservation and Tourism (DEDECT)
- North West Department of Water and Sanitation (DWS)
- North West Department of Rural Development and Land Reform (NWDRDLR)
- South Africa Heritage Resource Agency (SAHRA) and/or North West Provincial Heritage Resource Authority (NWPHRA)
- North West Department of Agriculture, Forestry and Fisheries (DAFF)

Local authorities

- Madibeng Local Municipality (including ward councillor)
- Bojanala Platinum District Municipality

Tribal authority

- Bapo Ba Mogale

ENVIRONMENTAL BASELINE

Aspect	Description
Geology	Various lithologies of the Rustenburg Layered Suites of the Bushveld Igneous Complex
Topography	Gentle undulating plains and flat terrain to the west with prominent hills to the east. The altitude ranges from between approximately 1080 and 1445 metres above mean sea level
Soils	Strongly structured black soils known as Calcic Vertisols and Umbric Leptosols. Calcic Vertisols have a very high clay content and are suitable for agriculture provided that there is plenty of rainfall or irrigation water.
Vegetation	Savanna Biome consisting of the Marikana Thornveld and the Norite Koppies Bushveld vegetation types. The prospecting right areas are classified as Critical Biodiversity Areas and an Ecological Support Areas and are considered an important habitat for vultures.
Surface Water	Located within the upper reaches of the A21J quaternary catchment of the Crocodile West. The prospecting areas are mostly dominated by non-perennial tributaries. The perennial Kareespruit, which is moderately modified transverses through the boundary of the Inkosi and is adjacent to the Imbasa prospecting right area.
Heritage	Heritage resources identified within the prospecting right areas, including graveyards are of high significance and are protected in terms of the National Heritage Resources Act (NHA) (No 25 of 1999).
Land use	Mixture of natural bushveld, farming, residential and mining activities.

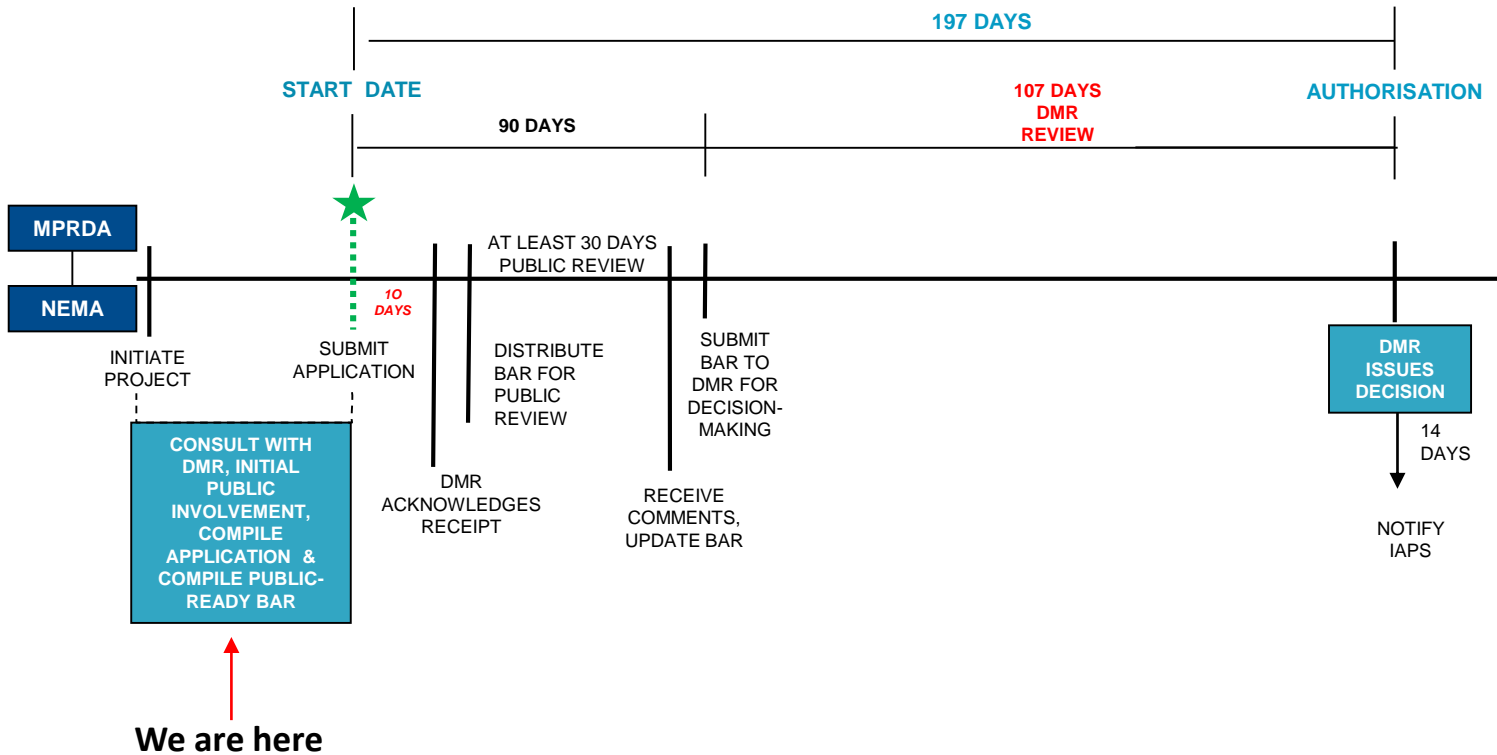
POTENTIAL IMPACTS

- Loss of biodiversity and pre-mining land use if any residual contamination exists (considered unlikely) and if revegetation isn't successful (unknown).
- Dust (if site not appropriately rehabilitated).
- Contractor loses social and economic benefits by not continuing with the prospecting, but assumed that contractor would find contracts elsewhere.
- Resource becomes available for other potential prospectors.

PUBLIC PARTICIPATION

- Hold focussed meetings Tribal authority, ward councilors and representatives from the Communal Property Association (CPA).
- Place site notices on the boundary of PR areas and along the access roads.
- Advertise in one local newspaper i.e. Brits Pos.
- Distribution of notification letters by hand to landowners.
- Distribution of BIDs via email to Interested and Affected Parties (I&APs) on database. SMS notifications.
- Site notices, I&AP notification letters, BID and Basic Assessment Report (BAR) summaries translated into Setswana.
- Recommendation for venues for review of the BAR by the public.
- Commenting authorities will receive hard copies of the BARs to review and comment.
- BARs will be available on SLR website.
- Notification to I&APs of DMR decision via email.

TIMEFRAME



GENERAL DISCUSSION, COMMENTS AND QUERIES

CLOSE

Project Manager and Public Participation Facilitator: Reinett Mogotshi
Project and Public Participation support: Clive Phashe

SLR Consulting (South Africa) (Pty) Ltd
(011) 467 0945 (Tel) and/or (011) 467 0978 (Fax)
Email: rmogotshi@slrconsulting.com

Thank you for your contribution.

APPENDIX 2: ATTENDANCE REGISTER

Name and Surname	Community/organisation	Postal address	Contact numbers	E-mail
Clive Phashe	SLR	PO Box 1596, Cramerview, 2060	0114670945	cphashe@slrconsulting.com
Reinett Mogotshi	SLR	PO Box 1596, Cramerview, 2060	0114670945	rmogotshi@slrconsulting.com
Webster Diale	Impala Platinum		0145696880	Webster.diale@implats.co.za
Steve Maimane	Community Member	Segwelane	0720544183	stvmaimane@gmail.com
Aubrey Molotsi	Ward 32 Councillor		0826219945	Mudau462@gmail.com



INKOSI AND IMBASA PLATINUM (PTY) LTD

**CLOSURE OF THE HARTEBEEPOOR B 410 JQ PROSPECTING RIGHTS
MINUTES OF THE FOCUSED-MEETING HELD AT THE SONOP OLD AGE HOME OFFICES**

DATE	22 January 2020
VENUE:	The Sonop old age home offices, in Sonop
SLR COMPANY:	SLR Consulting (Africa) (Pty) Ltd (SLR)
PROJECT NUMBER:	710.09004.00013/710.09007.00007
PURPOSE:	<p>The purpose of the focussed-meeting was:</p> <ul style="list-style-type: none"> • To provide information on the Prospecting Right (PR) closures; • To provide an overview of each of the projects and related environmental assessment processes information; • To provide an overview of the proposed applications; • To provide I&APs with an opportunity to: <ul style="list-style-type: none"> – Raise any issues and concerns (both positive or negative); and – Provide input on any environmental sensitivities & potential impacts. • To outline the way forward for the projects.
ATTENDANCE:	An attendance register is presented in Appendix 2.

1. OPEN AND INTRODUCTION

Webster Diale from Impala Platinum Limited (Impala) opened the meeting and introduced himself as the facilitator for the meeting. He thanked the attendees for availing themselves for the meeting. The meeting was attended by Ms. Letta Tshikane (Ward 40 Committee Member), Mr. Webster (Impala), Ms. Reinett Mogotshi and Mr. Clive Phashe (both from SLR).

2. PRESENTATION

Reinett Mogotshi gave a presentation which provided an overview of the proposed applications, project areas, potential impacts and the related environmental authorisation application processes. Copies of the meeting presentation were made available and handed out to attendees at the meeting. A copy of the presentation is included in Appendix 1.

3. COMMENTS RAISED

With the exception of a few general comments and questions requiring clarification, no issues were raised during the meeting. The questions/comments raised have been recorded in table 1 below. Where a response was provided, the response has been included in the table.

TABLE 1: COMMENTS RAISED DURING THE FOCUSED MEETING AND RESPONSES GIVEN BY THE PROJECT TEAM

Name	Issues Raised	Response given by Project Team (SLR/Implats)
Ms. Letta Tshikane	Thank you for the information provided, this information will be passed on to the Ward Councillor together with SLR's contact details for any queries.	Noted (SLR).

4. WAY FOWARD

The way forward presented at the focussed meeting is outlined below.

- Newspaper adverts will be placed in the Brits Pos newspaper;
- Site Notices will be placed within the communities and at the prospecting right boundary;
- Background information Documents will be placed at the old age home and the Councillor offices for the community members to review;
- Hard copies of the Basic Assessment Report (BAR) will be placed at the old age home and the Councillor offices for the community members to review; and
- Summaries of the BAR will be placed at the old age home and the Councillor offices for the community members to review.

5. CLOSE

Webster Diale and Reinett Mogotshi thanked attendees for their input and for attending the meeting. The meeting was closed at 13H30.

APPENDIX 1: PRESENTATION

INKOSI MINING AND IMBASA PLATINUM (PTY) LTD

**THE CLOSURE OF THE THE HARTEBEEPOORT B 410
JQ PROSPECTING RIGHTS**

KEY STAKEHOLDER MEETING

JANUARY 2020

global **environmental** and **advisory** solutions



AGENDA

- Welcome and opening
- Overview of the prospecting activities
- Environmental process overview
- Proposed public participation process
- Discussion
- Close

PROSPECTING RIGHT CLOSURES

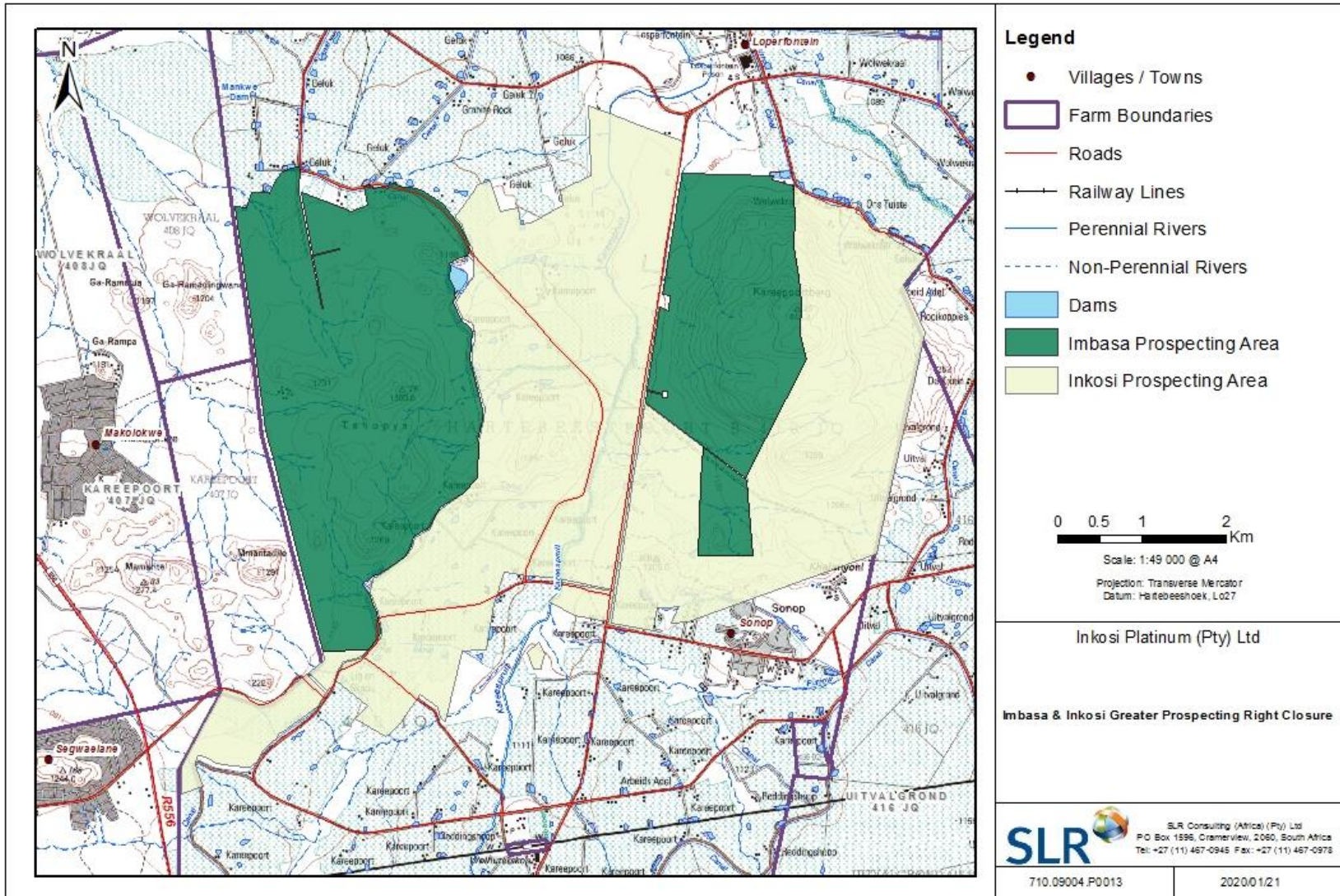
Inkosi Mining (Pty) Limited and Imbasa Platinum (Pty) Limited hold two prospecting rights.

- **Prospecting right numbers:** NW30/5/1/1/3/2/2/1/150 PR and NW30/5/1/1/2/424 PR
- **Properties:** Various portions of the farm Hartebeespoort B 410 JQ
- **Minerals covered in PR:** Platinum group metals, chrome, copper and nickel ore.
- **Location:** The prospecting areas are approximately 7 km from Brits within the Madibeng Local Municipality and Bojanala Platinum District Municipality in the North West Province

- After completion of the prefeasibility work, the Inkosi and Imbasa Boards made the decision not to apply for a mining right and commence mining, as it was found that the project is not economically viable.

- Inkosi/Imbasa have abandoned their prospecting rights on 16 August 2019.

LOCAL SETTING



ENVIRONMENTAL PROCESS (1)

Permissions required:

Application	Authorisation required	Applicable legislation	Competent authority
Closure of the Inkosi and Imbasa prospecting rights	PR closure certificate	Mineral and Petroleum Resources Development Act No. 28 of 2002	Department of Mineral Resources
	Environmental Authorisations	National Environmental Management Act (107 of 1998) (NEMA) 2014 EIA regulations (Chapter 5, part 2 application process)	

ENVIRONMENTAL PROCESS (2)

Regulatory authorities

- North West Department of Mineral Resources (DMR)
- Development, Environment, Conservation and Tourism (DEDECT)
- North West Department of Water and Sanitation (DWS)
- North West Department of Rural Development and Land Reform (NWDRDLR)
- South Africa Heritage Resource Agency (SAHRA) and/or North West Provincial Heritage Resource Authority (NWPHRA)
- North West Department of Agriculture, Forestry and Fisheries (DAFF)

Local authorities

- Madibeng Local Municipality (including ward councillor)
- Bojanala Platinum District Municipality

Tribal authority

- Bapo Ba Mogale

ENVIRONMENTAL BASELINE

Aspect	Description
Geology	Various lithologies of the Rustenburg Layered Suites of the Bushveld Igneous Complex
Topography	Gentle undulating plains and flat terrain to the west with prominent hills to the east. The altitude ranges from between approximately 1080 and 1445 metres above mean sea level
Soils	Strongly structured black soils known as Calcic Vertisols and Umbric Leptosols. Calcic Vertisols have a very high clay content and are suitable for agriculture provided that there is plenty of rainfall or irrigation water.
Vegetation	Savanna Biome consisting of the Marikana Thornveld and the Norite Koppies Bushveld vegetation types. The prospecting right areas are classified as Critical Biodiversity Areas and an Ecological Support Areas and are considered an important habitat for vultures.
Surface Water	Located within the upper reaches of the A21J quaternary catchment of the Crocodile West. The prospecting areas are mostly dominated by non-perennial tributaries. The perennial Kareespruit, which is moderately modified transverses through the boundary of the Inkosi and is adjacent to the Imbasa prospecting right area.
Heritage	Heritage resources identified within the prospecting right areas, including graveyards are of high significance and are protected in terms of the National Heritage Resources Act (NHA) (No 25 of 1999).
Land use	Mixture of natural bushveld, farming, residential and mining activities.

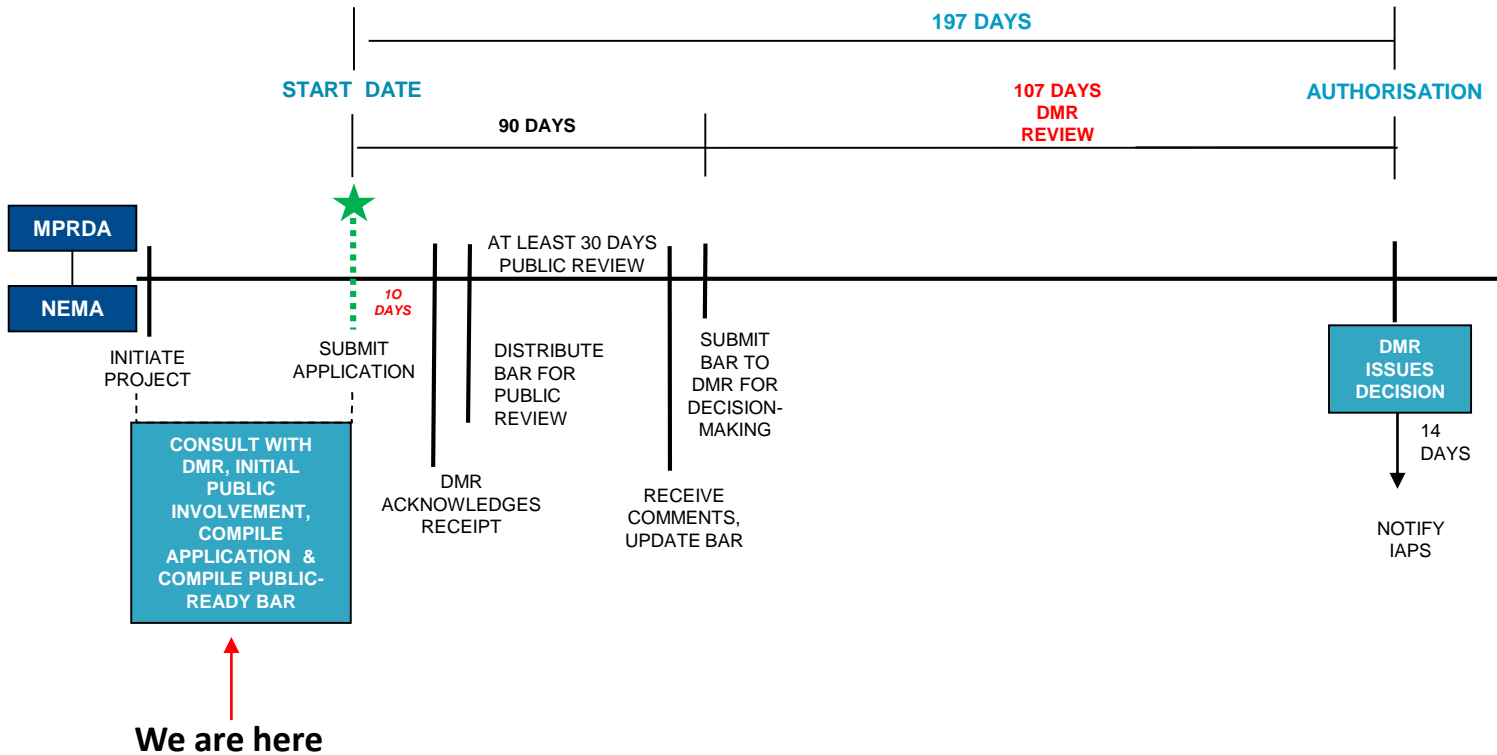
POTENTIAL IMPACTS

- Loss of biodiversity and pre-mining land use if any residual contamination exists (considered unlikely) and if revegetation isn't successful (unknown).
- Dust (if site not appropriately rehabilitated).
- Contractor loses social and economic benefits by not continuing with the prospecting, but assumed that contractor would find contracts elsewhere.
- Resource becomes available for other potential prospectors.

PUBLIC PARTICIPATION

- Hold focussed meetings Tribal authority, ward councilors and representatives from the Communal Property Association (CPA).
- Place site notices on the boundary of PR areas and along the access roads.
- Advertise in one local newspaper i.e. Brits Pos.
- Distribution of notification letters by hand to landowners.
- Distribution of BIDs via email to Interested and Affected Parties (I&APs) on database. SMS notifications.
- Site notices, I&AP notification letters, BID and Basic Assessment Report (BAR) summaries translated into Setswana.
- Recommendation for venues for review of the BAR by the public.
- Commenting authorities will receive hard copies of the BARs to review and comment.
- BARs will be available on SLR website.
- Notification to I&APs of DMR decision via email.

TIMEFRAME



GENERAL DISCUSSION, COMMENTS AND QUERIES

CLOSE

Project Manager and Public Participation Facilitator: Reinett Mogotshi
Project and Public Participation support: Clive Phashe

SLR Consulting (South Africa) (Pty) Ltd
(011) 467 0945 (Tel) and/or (011) 467 0978 (Fax)
Email: rmogotshi@slrconsulting.com

Thank you for your contribution.

APPENDIX 2: ATTENDANCE REGISTER

Name and Surname	Community/organisation	Postal address	Contact numbers	E-mail
Clive Phashe	SLR	PO Box 1596, Cramerview, 2060	0114670945	cphashe@slrconsulting.com
Reinett Mogotshi	SLR	PO Box 1596, Cramerview, 2060	0114670945	rmogotshi@slrconsulting.com
Webster Diale	Impala Platinum		0145696880	Webster.diale@implats.co.za
Letta Tshikane	Ward Committee member		0606998075	

INKOSI MINING (PTY) LIMITED

APPLICATION FOR CLOSURE OF THE HARTEBEESTPOORT B 410 JQ PROSPECTING RIGHT

PUBLIC PARTICIPATION PROCESS: INVITATION TO REGISTER AND COMMENT

Inkosi Mining (Pty) Limited (Inkosi) holds a prospecting right (DMR reference number (NW30/5/1/1/3/2/2/1/150 PR) for platinum group metals, chrome ore, copper ore and nickel ore on various portions of the farm Hartebeestpoort B 410 JQ. The prospecting area is approximately 7 km from Brits within the Madibeng Local Municipality and Bojanala Platinum District Municipality in the North West Province.

Between 2005 and 2014, Inkosi undertook prospecting activities on the farm Hartebeestpoort B 410 JQ, during which time 40 approved exploration drill holes were drilled. Inkosi is now planning to close the Hartebeestpoort B 410 JQ prospecting right.

Prior to the proposed closure of the prospecting right, an environmental authorisation is required from the Department of Mineral Resources (DMR). In support of this, Inkosi is required to submit a closure application in terms of Section 43(4) of the Mineral and Petroleum Resources Development Act (No. 28 of 2002) (MPRDA). In addition, the decommissioning of any activity requiring a closure certificate in terms of Section 43 of the MPRDA is an activity in Listing Notice 1 under the Environmental Impact Assessment (EIA) Regulations, 2014 (as amended) and a basic assessment process in terms of the National Environmental Management Act (No. 107 of 1998) (NEMA) is required.

SLR Consulting (Africa) (Pty) Ltd (SLR), an independent firm of environmental consultants, has been appointed by Inkosi to manage the environmental assessment process. The public participation process is being undertaken in terms of the NEMA: EIA Regulations (GNR 982, 4 December 2014), as amended.

To ensure that you are identified as an interested and/or affected party (I&AP) or to receive more detailed information on the project please submit your name, contact information and interest in the matter in writing to the contact person(s) given below by **13 February 2020**. Any I&APs registered on the project database will be notified when the Draft Basic Assessment Report (BAR) will be available for review and will be given the opportunity to review and submit comments on the BAR and/or summary document. The BAR and summary document will be made available in **February/March 2020**. Where responses or comments are received by **13 February 2020** these will be included in the BAR for public review, however I&APs will have the opportunity to submit comments until the end of the BAR review period.

Reinett Mogotshi

Project Reference: Inkosi Greater PR Closure

Email: rmogotshi@slrconsulting.com

Tel: 011 467 0945

Fax: 011 467 0978

Post: PO Box 1596, Cramerview, 2060

Note: If using post, please also contact us telephonically to notify us of your submission.



INKOSI MINING (PTY) LIMITED

LEKWALOKOPO LA GO EMISIWA GA TETLELELO YA GO BATLA DIMENERALA MO HARTEBEESTPOORT B 410 JQ

TIRO YA GO TSAYA KAROLO GA MORAFE: TALETSO YA GO IKWADISA LE GO TSHWAELE

Inkosi Mining (Pty) Limited (Inkosi) e na le tetelelo ya go batla dimenerala (nomoro ya referense ya DMR ya (NW30/5/1/1/3/2/2/1/150 PR) ya dimetale tsa setlhophha sa polatinamo, manya a chrome, manya a kopore le manya a nickel mo dikarolong tse di farologaneng tsa polasi ya Hartebeestpoort B 410 JQ. Lefelo le ba nang le tetelelo ya go batla dimenerala mo go lone e ka nna 7 km go tswa mo Brits mo kgaolong ya Mmasepala wa Selegae wa Madibeng le Mmasepala wa Kgaolo wa Bojanala Platinum kwa Porofenseng ya Bokone Bophirima.

Gareng ga 2005 le 2014, Inkosi e ne ya simolola ditiro tsa go batla dimenerala mo polasing ya Hartebeestpoort B 410 JQ, mo nakong e go neng ga epiwa dipetse go ya ka patlisiso e e letleletsweng. Jaanong Inkosi e rulaganya go emisa tetelelo ya go batla dimenerala mo Hartebeestpoort B 410 JQ.

Pele ga kemiso e e kopelwang ya go ka emisa tetelelo ya go batla dimenerala, go tlokega gore Lefapha la Ditswammung (Department of Mineral Resources [DMR]) le neye thebolelo ya go dira ditiro mo tikologong. Go tshetsa seno, Inkosi e tlhokiwa gore e neye kopo ya go tswala go ya ka Karolo 43(4) ya Molao wa Tswelediso ya Peteroliamo le Ditswammung (Mineral and Petroleum Resources Development Act) (No. 28 ya 2002) (MPRDA). Mo godimo ga moo, go emisiwa ga tiro epe mo go tlhokang setifikeiti sa go tswala tiro go ya ka Karolo 43 ya MPRDA ke tiro ya Listing Notice 1 tlase ga Melawana ya Tshakatsheko ya Kamego ya Tikologo (Environmental Impact Assessment [(EIA)], 2014 (e e fetotsweng) mme go tlokega tiro ya motheo ya tshakatsheko go ya ka Molao wa Naga wa Taolo ya Tikologo (National Environmental Management Act) (No. 107 ya 1998) (NEMA).

SLR Consulting (Africa) (Pty) Ltd (SLR), feme e e ikemetseng ka nosi ya bagakolodi ka tsa tikologo, e tlhomilwe ke Inkosi go laola tiro ya tshakatsheko ya tikologo. Tiro ya go tsaya karolo ga morafe e dirwa go ya ka NEMA. Melawana ya EIA (GNR 982, 4 Sedimonthole 2014), e e fetotsweng.

Go tlhomamisa gore o motho yo o kailweng o le wa batho ba ba nang le kgatlhego kgotsa wa ba ba amegang (*interested and/or affected party* [I&AP]) kgotsa o tshwanetse go newa tshedimosetso e e tlhalosang porojeke ka botlalo ka botlalo, re kopa gore o romele leina la gago, tshedimosetso ya go ikgolaganya le wena le gore o na le kgatlhego efe mo kgannyeng eno ka go kwalela (ba)motho yo go ka ikgolaganngwang le ene fa tlase fano ka **13 Tlhakole 2020**. Bo-I&AP bape ba ba kwadisitweng mo dathabeising ya porojeke eno ba tla itsisiwe fa Terafote ya Pego ya Ntsha ya Tshakatsheko (*Basic Assessment Report* [BAR]) e nna teng go ka tlhatlhabiwa mme ba tla newa tshono ya go tlhatlhaba le go naya ditshwaelo mo BAR le/kgotsa mo tokumenteng ya tshobokanyo. BAR le tokumente ya tshobokanyo di tla nna teng go bonwa ka kgwedi ya **Tlhakole/Mopitwe 2020**. Fa ditsibogo kgotsa ditshwaelo di amogetswe ka **13 Tlhakole 2020** di tla tsennngwa mo BAR gore di tlhatlhabiwe ke morafe, lefa go ntse jalo bo-I&AP ba tla nna le tshono ya go naya ditshwaelo tsa bone go fitlha kwa bofelong jwa nako ya tlhatlhabo ya BAR.

Reinett Mogotshi

Referense ya Porojeke: Inkosi Greater PR Closure

Imeile: rmogotshi@slrconsulting.com

Mogala: 011 467 0945

Fekese: 011 467 0978

Ka Poso: PO Box 1596, Cramerview, 2060

Elatlhoko: Fa e le gore o dirisa poso, tswetswee o ikgolaganye le rona gape ka mogala go re itsise gore o rometse





Photo 1: Segwelane Community Clinic



Photo 2: Makolokwe Bus/Taxi Stop



Photo 3: Segwelane Supermarket



Photo 4: Segwelane Bus/Taxi Stop



Photo 5: Makolokwe Post Office and Supermarket



Photo 6: Bakwena ba Mogopa Tribal Offices



Photo 7: Madibeng Ward 40 Councillor Offices



Photo 8: Portion 1130 Entrance



Photo 9: Sonop Supermarket/Post Office



Photo 10: Property next to Portion 1150



Photo 11: Property adjacent Portion 1113 and 1112



Photo 12: Portion 1117 Fence



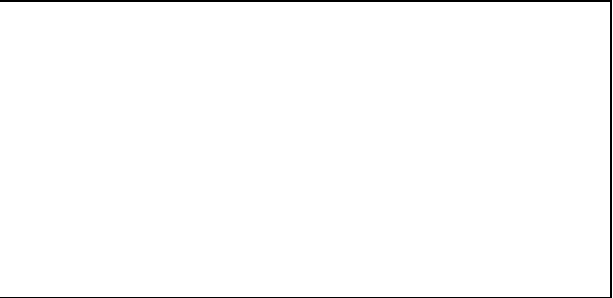
Photo 13: Portion 1124 and 1125 Entrance

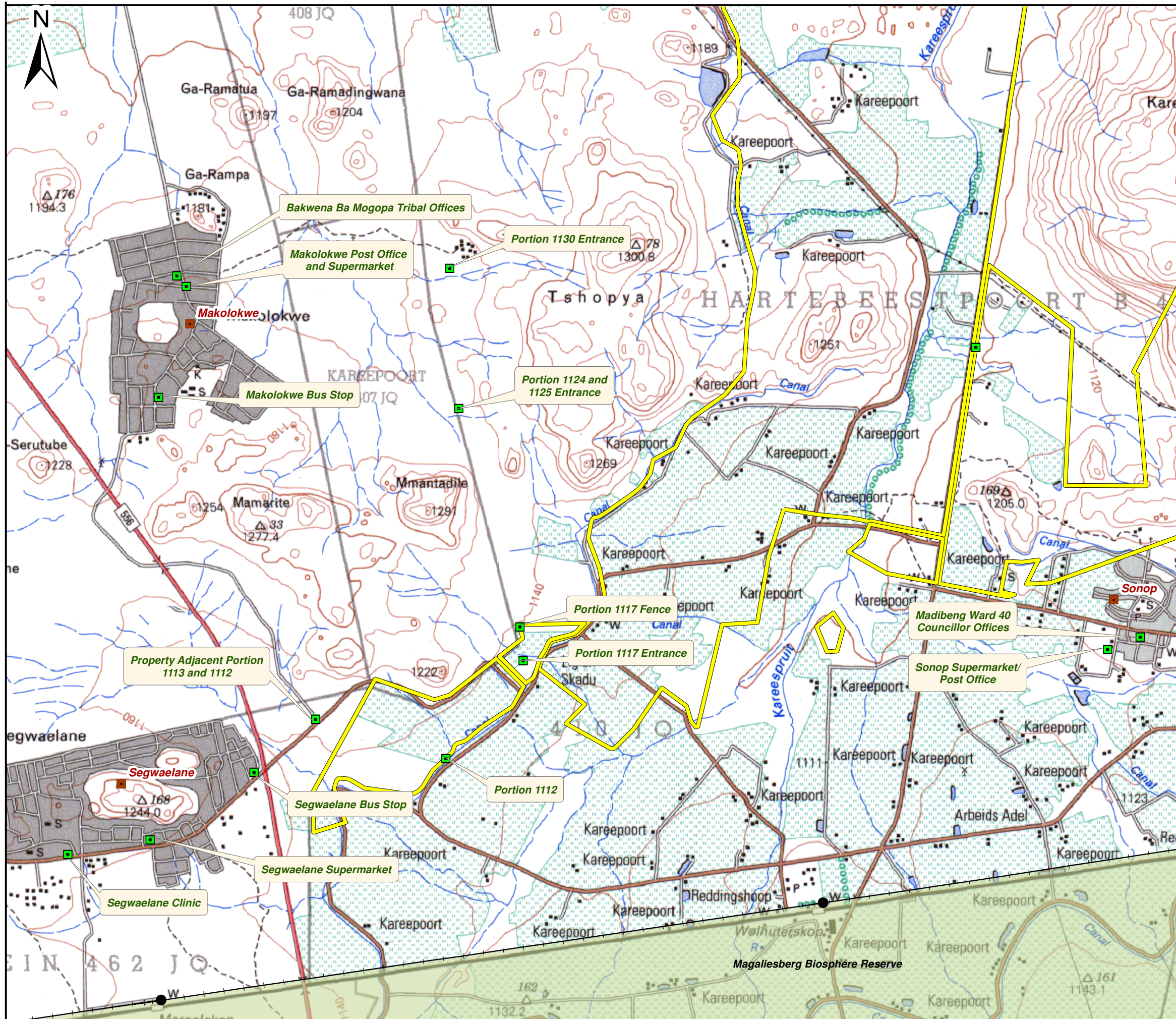


Photo 14: Portion 1117 Entrance



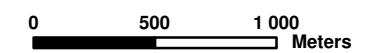
Photo 15: Portion 1112





Legend

- Location of Site Notices
- Inkosi Prospecting Right Area
- Towns / Villages
- Railway Stations
- Main Roads
- Secondary Roads
- Rivers and Streams
- 20m Contour Lines
- +— Railway Line
- SA Conservation Areas 2019



Scale: 1:40 000 @ A3
 Projection: Transverse Mercator
 Datum: WGS1984, Lo37

Inkosi Platinum (Pty) Ltd

Location of Site Notices



SLR Consulting (Africa) (Pty) Ltd
 P O Box 1596, Cramerview, 2060, South Africa
 Tel: +27 (11) 467-0945 Fax: +27 (11) 467-0978

INKOSI MINING (PTY) LIMITED
APPLICATION FOR CLOSURE OF THE HARTEBEESTPOORT B 410 JQ
PROSPECTING RIGHT

PUBLIC PARTICIPATION PROCESS: INVITATION TO REGISTER AND COMMENT

Inkosi Mining (Pty) Limited (Inkosi) holds a prospecting right (DMR reference number (NW30/5/1/1/3/2/2/1/150 PR) for platinum group metals, chrome ore, copper ore and nickel ore on various portions of the farm Hartebeestpoort B 410 JQ. The prospecting area is approximately 7 km from Brits within the Madibeng Local Municipality and Bojanala Platinum District Municipality in the North West Province.

Between 2005 and 2014, Inkosi undertook prospecting activities on the farm Hartebeestpoort B 410 JQ, during which time 40 approved exploration drill holes were drilled. Inkosi is now planning to close the Hartebeestpoort B 410 JQ prospecting right.

Prior to the proposed closure of the prospecting right, an environmental authorisation is required from the Department of Mineral Resources (DMR). In support of this, Inkosi is required to submit a closure application in terms of Section 43(4) of the Mineral and Petroleum Resources Development Act (No. 28 of 2002) (MPRDA). In addition, the decommissioning of any activity requiring a closure certificate in terms of Section 43 of the MPRDA is an activity in Listing Notice 1 under the Environmental Impact Assessment (EIA) Regulations, 2014 (as amended) and a basic assessment process in terms of the National Environmental Management Act (No. 107 of 1998) (NEMA) is required.

SLR Consulting (Africa) (Pty) Ltd (SLR), an independent firm of environmental consultants, has been appointed by Inkosi to manage the environmental assessment process. The public participation process is being undertaken in terms of the NEMA: EIA Regulations (GNR 982, 4 December 2014), as amended.

To ensure that you are identified as an interested and/or affected party (I&AP) or to receive more detailed information on the project please submit your name, contact information and interest in the matter in writing to the contact person(s) given below by **13 February 2020**. Any I&APs registered on the project database will be notified when the Draft Basic Assessment Report (BAR) will be available for review and will be given the opportunity to review and submit comments on the BAR and/or summary document. The BAR and summary document will be made available in **February/March 2020**. Where responses or comments are received by **13 February 2020** these will be included in the BAR for public review, however I&APs will have the opportunity to submit comments until the end of the BAR review period.

Reinett Mogotshi

Project Reference: Inkosi Greater PR Closure

Email: rmogotshi@slrconsulting.com

Tel: 011 467 0945

Fax: 011 467 0978

Post: PO Box 1596, Cramerview, 2060

Note: If using post, please also contact us telephonically to notify us of your submission.



Bestuurder raak pad byster



Gelukkig het die bestuurder van die voertuig minder ernstige beserings opgedoen, nadat hy beheer oor sy voertuig verloor het en in die bosse naby die Harties-kabelspoor tot stilstand gekom het. Die personeel van HEMS het hom vir mediese hulp na 'n hospitaal in Brits geneem.



Motoriste word gewaarsku om op die uitkyk te wees vir obstrukties op die paale, dit nadat een persoon Sondag in 'n botsing beseer is. Volgens HEMS het die bestuurder in 'n sementblok in Spoorwegstraat, rigting Damosville vasgery.

Wees paraat!



Motor rol, man sterf

In 'n enkelvoertuig ongeluk, Vrydag 24 Januarie 2020, op die N1N4 Bakwena-tolpad, voor die Brits/Randburg-afrit, is een persoon oorlede, terwyl die ander een minder ernstige beserings opgedoen het. Volgens die woordvoerder van HEMS, Leandré Spies, het dié pa en sy seun in die rigting van Pretoria gery toe die bestuurder vermoedelik beheer oor die voertuig verloor het. Die pa is op die toneel dood verklaar en die seun is na 'n hospitaal in Brits vir behandeling geneem.

Sewe mense beseer



Sewe mense is Saterdagoggend, 25 Januarie 2020, in 'n botsing tussen twee voertuie by die padwerke op die Thabazimbi-pad, naby Laerskool Sanddrift, beseer. Die ongeluk het omstreeks 20:15 plaasgevind. Volgens inligting op die toneel het die een voertuig vermoedelik die stop-en-ry padtekens geïgnoreer en van voor teen die ander voertuig gebots. Die paramedici van Hartbeespoort Emergency Medical Service het gevorderde lewens-ondersteuningsbehandeling op twee van die ernstig beseerde mense toegepas. Al die beseerdes is vir behandeling na 'n hospitaal in Brits geneem.

IMBASA PLATINUM (PTY) LIMITED APPLICATION FOR CLOSURE OF THE HARTEBEESTPOORT B 410 JQ PROSPECTING RIGHT

PUBLIC PARTICIPATION PROCESS: INVITATION TO REGISTER AND COMMENT

Imbasa Platinum (Pty) Limited (Imbasa) holds a prospecting right (DMR reference number: NW30/5/1/1/2/424 PR) for platinum group metals, chrome ore, copper ore and nickel ore on various portions of the farm Hartebeestpoort B 410 JQ. The prospecting area is approximately 7 km from Brits within the Madibeng Local Municipality and Bojanala Platinum District Municipality in the North West Province.

Between 2004 and 2014, Imbasa undertook prospecting activities on the farm Hartebeestpoort B 410 JQ, during which time 16 approved exploration drill holes were drilled. Imbasa is now planning to close its Hartebeestpoort B 410 JQ prospecting right.

Prior to the proposed closure of the prospecting right, an environmental authorisation is required from the Department of Mineral Resources (DMR). In support of this, Imbasa is required to submit a closure application in terms of Section 43(4) of the Mineral and Petroleum Resources Development Act (No. 28 of 2002) (MPRDA). In addition, the decommissioning of any activity requiring a closure certificate in terms of Section 43 of the MPRDA is an activity in Listing Notice 1 under the Environmental Impact Assessment (EIA) Regulations, 2014 (as amended) and a basic assessment process in terms of the National Environmental Management Act (No. 107 of 1998) (NEMA) is required.

SLR Consulting (Africa) (Pty) Ltd (SLR), an independent firm of environmental consultants, has been appointed by Imbasa to manage the environmental assessment process. The public participation process is being undertaken in terms of the NEMA: EIA Regulations (GNR 982, 4 December 2014), as amended.

To ensure that you are identified as an interested and/or affected party (I&AP) or to receive more detailed information on the project please submit your name, contact information and interest in the matter in writing to the contact person(s) given below by **13 February 2020**. Any I&APs registered on the project database will be notified when the Draft Basic Assessment Report (BAR) will be available for review and will be given the opportunity to review and submit comments on the BAR and/or summary document. The BAR and summary document will be made available in **February/March 2020**. Where responses or comments are received by **13 February 2020** these will be included in the BAR for public review, however I&APs will have the opportunity to submit comments until the end of the BAR review period.

Reinett Mogotshi

Project Reference: Imbasa Platinum (Pty) Ltd PR Closure

Email: rmogotshi@slrconsulting.com

Tel: 011 467 0945

Fax: 011 467 0978

Post: PO Box 1596, Cramerview, 2060

Note: If using post, please also contact us telephonically to notify us of your submission.



INKOSI MINING (PTY) LIMITED APPLICATION FOR CLOSURE OF THE HARTEBEESTPOORT B 410 JQ PROSPECTING RIGHT

PUBLIC PARTICIPATION PROCESS: INVITATION TO REGISTER AND COMMENT

Inkosi Mining (Pty) Limited (Inkosi) holds a prospecting right (DMR reference number (NW30/5/1/1/3/2/2/1/150 PR) for platinum group metals, chrome ore, copper ore and nickel ore on various portions of the farm Hartebeestpoort B 410 JQ. The prospecting area is approximately 7 km from Brits within the Madibeng Local Municipality and Bojanala Platinum District Municipality in the North West Province.

Between 2005 and 2014, Inkosi undertook prospecting activities on the farm Hartebeestpoort B 410 JQ, during which time 40 approved exploration drill holes were drilled. Inkosi is now planning to close the Hartebeestpoort B 410 JQ prospecting right.

Prior to the proposed closure of the prospecting right, an environmental authorisation is required from the Department of Mineral Resources (DMR). In support of this, Inkosi is required to submit a closure application in terms of Section 43(4) of the Mineral and Petroleum Resources Development Act (No. 28 of 2002) (MPRDA). In addition, the decommissioning of any activity requiring a closure certificate in terms of Section 43 of the MPRDA is an activity in Listing Notice 1 under the Environmental Impact Assessment (EIA) Regulations, 2014 (as amended) and a basic assessment process in terms of the National Environmental Management Act (No. 107 of 1998) (NEMA) is required.

SLR Consulting (Africa) (Pty) Ltd (SLR), an independent firm of environmental consultants, has been appointed by Inkosi to manage the environmental assessment process. The public participation process is being undertaken in terms of the NEMA: EIA Regulations (GNR 982, 4 December 2014), as amended.

To ensure that you are identified as an interested and/or affected party (I&AP) or to receive more detailed information on the project please submit your name, contact information and interest in the matter in writing to the contact person(s) given below by **13 February 2020**. Any I&APs registered on the project database will be notified when the Draft Basic Assessment Report (BAR) will be available for review and will be given the opportunity to review and submit comments on the BAR and/or summary document. The BAR and summary document will be made available in **February/March 2020**. Where responses or comments are received by **13 February 2020** these will be included in the BAR for public review, however I&APs will have the opportunity to submit comments until the end of the BAR review period.

Reinett Mogotshi

Project Reference: Inkosi Greater PR Closure

Email: rmogotshi@slrconsulting.com

Tel: 011 467 0945

Fax: 011 467 0978

Post: PO Box 1596, Cramerview, 2060

Note: If using post, please also contact us telephonically to notify us of your submission.



INKOSI MINING (PTY) LTD

BACKGROUND INFORMATION DOCUMENT FOR THE CLOSURE OF THE HARTEBEESTPOORT B 410 JQ PROSPECTING RIGHT

January 2020

INTRODUCTION

Inkosi Mining (Pty) Limited (Inkosi) holds a prospecting right (DMR reference number (NW30/5/1/1/3/2/2/1/150 PR) for platinum group metals, chrome ore, copper ore and nickel ore on various portions of the farm Hartebeestpoort B 410 JQ. The prospecting area is approximately 7 km from Brits within the Madibeng Local Municipality and Bojanala Platinum District Municipality in the North West Province (Figure 1).

Between 2005 and 2014, Inkosi undertook prospecting activities on the farm Hartebeestpoort B 410 JQ, during which time 40 approved exploration drill holes were drilled.

Inkosi is now planning to close its Hartebeestpoort B 410 JQ prospecting right.

ENVIRONMENTAL AUTHORISATION PROCESS

Prior to the proposed closure of the prospecting right, an environmental authorisation is required from the Department of Mineral Resources (DMR). In support of this, Inkosi is required to submit a closure application in terms of Section 43(4) of the Mineral and Petroleum Resources Development Act (No. 28 of 2002) (MPRDA).

In addition, the decommissioning of any activity requiring a closure certificate in terms of Section 43 of the MPRDA is an activity in Listing Notice 1 under the Environmental Impact Assessment (EIA) Regulations, 2014 (as amended) and a Basic Assessment Process in terms of the National Environmental Management Act (No. 107 of 1998) (NEMA) is required. In this regard, the EIA Regulations being followed are Government Notice Regulation (GNR) 982 of 4 December 2014, as amended.

The EIA process being undertaken will address the closure requirements of the MPRDA and NEMA.

PURPOSE OF THIS DOCUMENT

This document has been prepared by SLR to inform you about:

- The proposed prospecting right closure;
- The prospecting right area;
- The environmental assessment process being followed (Basic Assessment Process);
- Possible environmental/cultural/socio-economic impacts; and
- How you can have input into the environmental assessment process.

YOUR ROLE

You have been identified as an interested and/or affected party (I&AP) who may want to be informed about the proposed project and have input into the environmental process and report. To register as an I&AP, please submit your name, contact information and interest in the matter in writing to the contact person(s) given below by **13 February 2020**.

Any I&APs registered on the project database will also be given the opportunity to review and comment on the BAR when it becomes available for public review in **February/March 2020**. Where responses to this document or comments are received by **13 February 2020** these will be included in the Draft Basic Assessment Report (BAR) for public review, however I&APs will have the opportunity to submit comments until the end of the BAR review period.

All comments received will be recorded and included in the report submitted to the DMR for decision-making.

HOW TO RESPOND

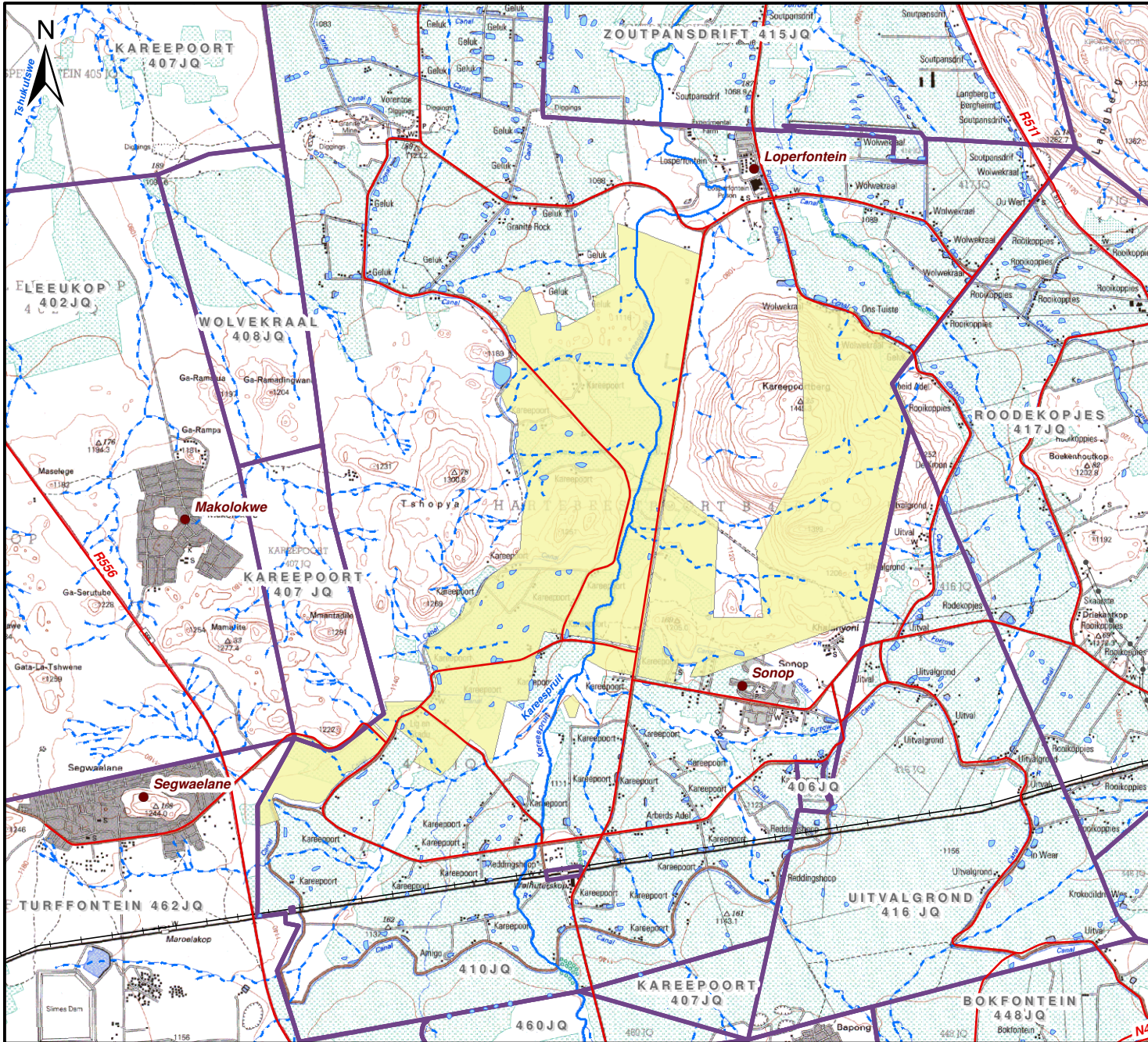
Responses to this document can be submitted by means of the attached comments sheet and/or through communication with the person listed below.

WHO TO CONTACT

Reinett Mogotshi
(011) 467 0945 (Tel) or
(011) 467 0978 (Fax) or

rmogotshi@slrconsulting.com

SLR Consulting (Africa) (Pty) Ltd (SLR), an independent firm of environmental consultants, has been appointed by Inkosi Mining (Pty) Ltd to manage the environmental assessment process.



Legend

- Villages / Towns
- ▭ Farm Boundaries
- Roads
- +— Railway Lines
- Perennial Rivers
- - - Non-Perennial Rivers
- Dams
- Inkosi Prospecting Right Area

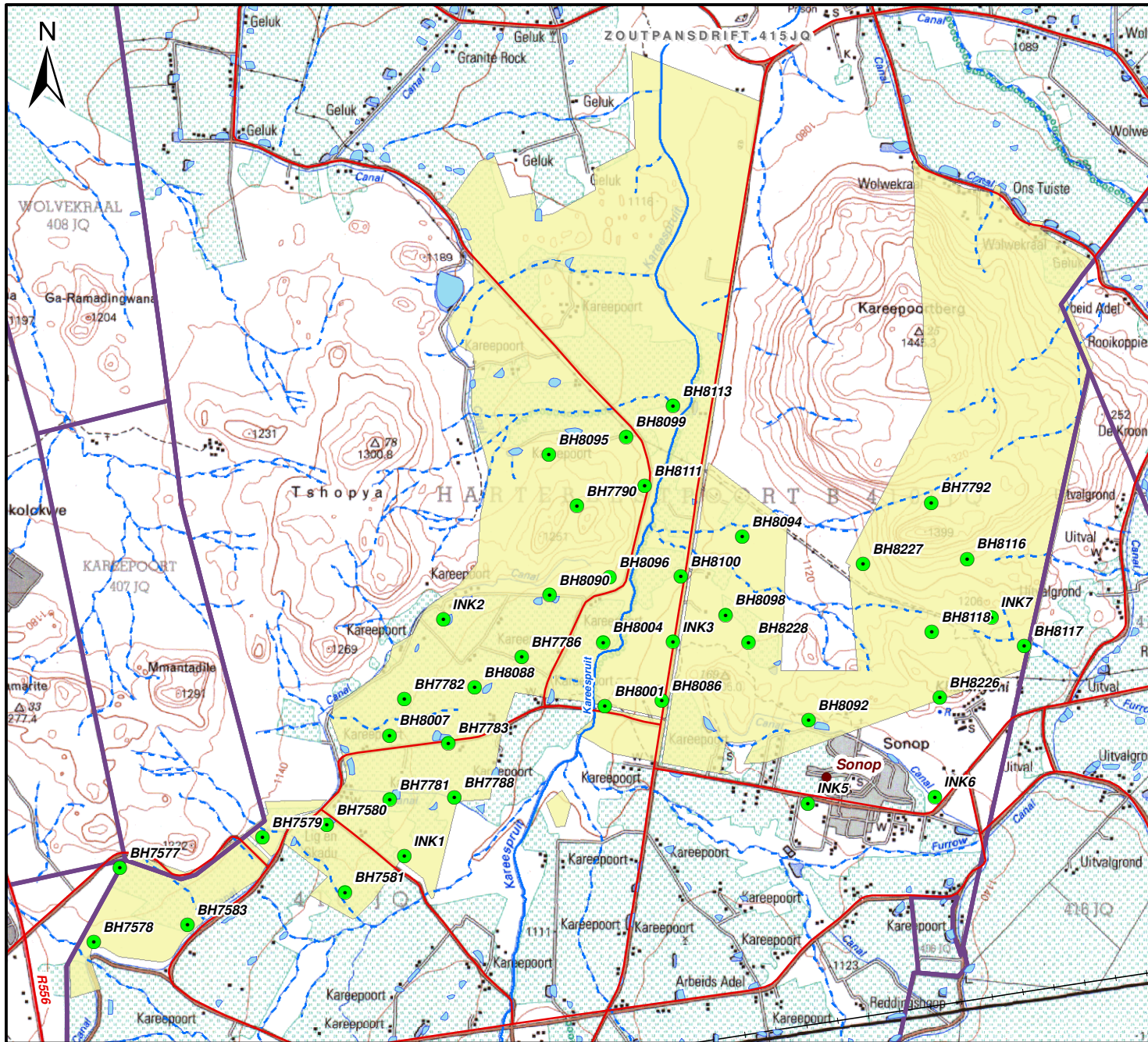
0 1 2 3 Km
 Scale: 1:80 000 @ A4
 Projection: Transverse Mercator
 Datum: Hartebeeshoek, Lo27

Inkosi Platinum (Pty) Ltd

Figure 1

Local Setting of Inkosi Prospecting Right Closure

SLR SLR Consulting (Africa) (Pty) Ltd
 P O Box 1596, Cramerview, 2060, South Africa
 Tel: +27 (11) 467-0945 Fax: +27 (11) 467-0978



Legend

- Villages / Towns
- ▭ Farm Boundaries
- Roads
- +— Railway Lines
- Perennial Rivers
- - - Non-Perennial Rivers
- Dams
- Inkosi Prospecting Right Area
- Drill Sites

0 1 Km
 Scale: 1:51 000 @ A4
 Projection: Transverse Mercator
 Datum: Hartebeeshoek, Lo27

Inkosi Platinum (Pty) Ltd

Figure 2

The Location of Drill holes within the Prospecting Right Area



SLR Consulting (Africa) (Pty) Ltd
 P O Box 1596, Cramerville, 2060, South Africa
 Tel: +27 (11) 467-0945 Fax: +27 (11) 467-0978

PROJECT OVERVIEW

OVERVIEW

The Inkosi prospecting right covers the various portions of the farm Hartebeestpoort B 410 JQ (Hartebeestpoort) (Figure 2).

Between 2005 to 2014, Inkosi undertook prospecting activities on the farm Hartebeestpoort, during which time 40 approved exploration drill holes were drilled.

Prospecting activities included the establishment of temporary portable ablution facilities, camps and temporary access tracks when deviations from existing access roads were required. For each drill site, once drilling was complete, the site was decommissioned. Decommissioning catered for the capping and sealing of boreholes, removal of any drilling equipment, chemicals and waste, removal and filling of sumps and ripping of compacted soils (at drill sites and access tracks) to allow for re-vegetation of the site.

Inkosi proposes to close its Hartebeestpoort prospecting right (see motivation below). The areas disturbed by the prospecting activities have been allowed to re-vegetate for use by landowners and land users.

MOTIVATION FOR THE CLOSURE OF THE PROSPECTING RIGHT

After completion of the pre-feasibility work, the Inkosi Board made the decision not to apply for a mining right and to commence with mining, as it was found that the project is not economically viable at the expected economic parameters (i.e. cost, funding, prices). Inkosi has decided to exit from this

Prospecting right via a closure application.

Abandoning the prospecting right would allow for new third-party applications to be lodged with the DMR.

STATUS OF ENVIRONMENT

This section provides a short description of the baseline conditions within the prospecting right area.

The climate of the prospecting right area is semi-arid, with summer rainfall of approximately 29 mm per annum and I temperatures in excess of 40°C during summer months. The winters are dry, with mild temperatures and only occasional frost.

The topography of the prospecting right area and surrounding area is characterised by gentle undulating plains and flat terrain to the west with prominent hills to the east. The altitude ranges from between approximately 1080 and 1445 metres above mean sea level.

Geologically, the prospecting right area comprises of various lithologies of the Rustenburg Layered Suites of the Bushveld Igneous Complex. The outcropping rocks recorded consists of pyramid gabbro-norites interlayered with anorthosites underlain by the lithologies of the Mathagama norite-anorthosites which host the Merensky riff.

The soils types characteristic of the prospecting right area and surrounds consist of strongly structured black soils known as Calcic Vertisols and Umbric Leptosols. Calcic Vertisols have a very high clay content and are suitable for agriculture provided that there is plenty of rainfall or irrigation water.

The prospecting right area falls within the Savanna Biome consisting of the Marikana Thornveld and the Norite Koppies Bushveld vegetation types. This area is classified as a Critical Biodiversity Area and an Ecological Support Area and is considered as an important habitat for vultures.

The prospecting right area is located within the upper reaches of the A21J quaternary catchment of the Crocodile West. The prospecting area is mostly dominated by non-perennial tributaries. The perennial Kareespruit, which is moderately modified transverses through the boundary of the prospecting right area. Water from the Kareespruit is used for domestic and agricultural purposes.

There are several heritage resources identified within the prospecting right area, these include Late Iron Age sites, as well as two graveyards. These graveyards are of high significance and are protected in terms of the National Heritage Resources Act (NHA) (No 25 of 1999).

The land use within the prospecting right area and surrounds is a mixture of natural bushveld, farming, residential and mining activities.

POTENTIAL ENVIRONMENTAL/CULTURAL/SOCIO-ECONOMIC IMPACTS

Given the nature of the prospecting right closure, impacts are expected to be limited to:

- Loss of biodiversity and pre-mining land use if any residual contamination exists (considered unlikely) and if revegetation isn't successful (to be determined);
- Dust generation (if site is not appropriately rehabilitated);
- Potential loss of social and economic benefits to contractors by not continuing with the prospecting, but it's assumed that contractors would find contracts elsewhere; and
- Resource becomes available for other potential prospectors.

ENVIRONMENTAL AUTHORISATION PROCESS

The environmental assessment process provides:

- Information on the project and environment in which it is being undertaken;
- Identifies, in consultation with I&APs the potential negative as well as positive; environmental/cultural/socio-economic impacts; and
- Reports on management measures required to mitigate impacts and incorporates requirements for monitoring programmes (where required).

The likely process steps and timeframes are provided below.

PHASE I - Pre-application phase (January to February 2020)

- Project announcement meeting with Communal Property Association, Tribal Authority and ward councillors; and
- Notify commenting authorities and I&APs of proposed project and environmental assessment (via newspaper advert, site notices and BID).

PHASE II – BAR phase (February to April 2020)

- Submission of NEMA application to DMR;
- Compile BAR and summary, distribute to I&APs and commenting authorities for 30-day review (February/March 2020); and
- Update the BAR with comments received during the public review period.

PHASE III – Competent authority review phase (May to August 2020)

- Submit BAR (inclusive of comments raised during the review period) to the DMR for decision making (May 2020) (107 days legislated decision-making period); and
- Circulate decisions to I&APs on project database.

PARTIES INVOLVED IN THE ENVIRONMENTAL ASSESSMENT PROCESS

I&APs

- Landowners and land users within the prospecting right area; and
- Parastatals.

COMPETENT AND COMMENTING AUTHORITIES

- North West Department of Mineral Resources (DMR);
- North West Department of Economic Development, Environment, Conservation and Tourism (DEDECT);
- North West Department of Water and Sanitation (DWS);
- North West Department of Rural Development and Land Reform (NWDRDLR);
- South Africa Heritage Resource Agency (SAHRA) and/or North West Provincial Heritage Resource Authority (NWPHERA); and
- North West Department of Agriculture, Forestry and Fisheries (NWDAFF).

LOCAL AUTHORITIES

- Madibeng and Rustenburg Local Municipalities (incl. ward councillors); and
- Bojanala Platinum District Municipality.

TRADITIONAL AUTHORITY

- * Bapo Ba Mogale.

Please let us know if there are any additional parties that should be involved.

Figure 1: Example of rehabilitated drill site within the planned prospecting right closure area



INKOSI MINING (PTY) LTD

BACKGROUND INFORMATION DOCUMENT FOR THE CLOSURE OF THE HARTEBEESTPOORT B 410 JQ PROSPECTING RIGHT

DATE		TIME		
PARTICULARS OF THE INTERESTED AND AFFECTED PARTY				
NAME				
INTEREST IN THE PROPOSED PROJECT				
POSTAL / STREET ADDRESS				
		POSTAL CODE		
WORK/ DAY TELEPHONE NUMBER		WORK/ DAY FAX NUMBER		
CELL PHONE NUMBER		E-MAIL ADDRESS		
PLEASE REGISTER ME AS AN INTERESTED & AFFECTED PARTY (I&AP) SO THAT I MAY RECEIVE FURTHER INFORMATION AND NOTIFICATIONS DURING THE ENVIRONMENTAL IMPACT ASSESSMENT PROCESS			YES	NO
HOW WOULD YOU LIKE TO RECEIVE YOUR NOTIFICATIONS?			E-MAIL	
			REGISTERED MAIL (POST)	
			FAX	

PLEASE WRITE YOUR COMMENTS AND QUESTIONS HERE (please use separate sheets if you wish)

PLEASE INCLUDE THE FOLLOWING OF MY COLLEAGUES/FRIENDS/NEIGHBOURS AS I&APS FOR THIS PROJECT:

Please return completed forms to:

Reinett Mogotshi
SLR Consulting (South Africa) (Pty) Ltd
(011) 467 0945 (Tel) and/or (011) 467 0978 (Fax)
rmogotshi@slrconsulting.com

THANK YOU FOR YOUR CONTRIBUTION!!!

INKOSI MINING (PTY) LTD

TOKUMENTE YA TLHALOSO YA GO EMISIWA GA TETLELELO YA PATLO YA DIMENERALA MO HARTEBEESTPOORT 410 JQ

Ferikgong 2020

KETAPELE:

Inkosi Mining (Pty) Limited (Inkosi) e na le tettelelo ya go batla dimenerala (nomoro ya referense ya DMR ya (NW30/5/1/1/3/2/2/1/150 PR) ya dimetale tsa setlhopha sa polatinamo, manya a *chrome*, manya a kopore le manya a *nickel* mo dikarolong tse di farologaneng tsa polasi ya Hartebeestpoort B 410 JQ. Lefelo le ba nang le tettelelo ya go batla dimenerala mo go lone e ka nna 7 km go tswa mo Brits mo kgaolong ya Mmasepala wa Selegae wa Madibeng le Mmasepala wa Kgaolo wa Bojanala Platinum kwa Porofenseng ya Bokone Bophirima. (Setshwantsho 1).

Gareng ga 2005 le 2014, Inkosi e ne ya simolola ditiro tsa go batla dimenerala mo polasing ya Hartebeestpoort B 410 JQ, mo nakong e go neng ga epiwa dipetse tsa patlisiso e e letleletsweng. Di le 40.

Jaanong Inkosi e rulaganya go emisa tettelelo ya go batla dimenerala mo Hartebeestpoort B 410 JQ..

TIRO YA THEBOLELO YA GO DIRA MO TIKOLOGONG

Pele ga go ka emisiwa tettelelo e e kopelwang ya tshwanelo tshwanelo ya go batla dimenerala, go tlhokega gore Lefapha la Ditswammung (*Department of Mineral Resources [DMR]*) le rebolele go dira ditiro mo tikologong. Go tshegetsa seno, Inkosi e tlhokiwa gore e tlise kopo go ya ka Karolo 43(4) ya Molao wa Tswelediso ya Peteroliamo le Ditswammung (*Mineral and Petroleum Resources Development Act*) (No. 28 ya 2002) (MPRDA).

Mo godimo ga moo, go emisiwa ga tiro epe mo go tlhokang setifikeiti sa go tswala tiro go ya ka Karolo 43 ya MPRDA ke tiro ya *Listing Notice 1* tlase ga Melawana ya Tshekatsheko ya Kamego ya Tikologo (*Environmental Impact Assessment [(EIA)], 2014* (e e fetotsweng) mme go tlhokega Tiro ya Motheo ya Tshekatsheko go ya ka Molao wa Naga wa Taolo ya Tikologo (*National Environmental Management Act*) (No. 107 wa 1998) (NEMA). Malebana le seno, Melawana ya EIA e e dirisiwang ke Molawana wa Kitsiso ya Puso wa (GNR) 982 wa 4 Morule 2014, o o fetotsweng.

Tiro e e dirwang ya EIA e tla dira se se batliwang ke MPRDA le NEMA mabapi le go tswala.

BOIKAELELO JWA TOKUMENTE ENO

Tokumente eno e kwadilwe ke ba SLR go go itsise kaga:

- Go tlogelwa ga tettelelo ya go batla dimenerala mo go kopelwang;
- Lefelo le go letleletsweng ya go batla dimenerala mo go lone;
- Tiro ya tshekatsheko ya tikologo e e dirwang (Tiro ya Motheo ya Tshekatsheko);
- Go amega mo go ka diragalang ga tikologo/setso/ikonomi le loago; le
- Kafa o ka nnang le tshwaelo ka teng mo tirong eno ya tshekatsheko ya tikologo.

SEABE SA GAGO

O supilwe fa o le mongwe wa batho ba ba nang le kgatlhego le ba ba amegang (*interested and affected party [I&AP]*) yo o ka nnang a batla go nna le kitso ka porojeke e e kopelwang e, le go nna le seabe mo tirong ya mo tikologong eno le pego ka yone...

Gore o ikwadise jaaka [I&AP] tsweetswee romela leina la gago, tshedimosetso ya go ikgolaganya le wena le gore o na le kgatlhego efe mo kgannyeng eno ka lekwalo mme o le romelele motho yo go ka ikgolagannwang le nele fa tlase fano ka **13 Tlhakole 2020.**

Motho ope wa bo-I&AP yo o kwasiditsweng mo dathabeising ya porojeke eno le ene o tla nwa tshono ya go tlhatlhoba le go tshwaela ka BAR fa e nna teng gore e tlhatlhabiwe ke morafe ka **Tlhakole/Mopitlwe 2020.**

Fa e le gore go amogetswe ditsibogo mabapi le tokumente eno kgotsa ditshwaelo ka **13 Tlhakole 2020** di tla tsenngwa mo Terafoteng ya Pego ya Tshekatsheko ya Motheo (*Basic Assessment Report [BAR]*) gore e tlhatlhabiwe ke morafe, lefa go ntse jalo bo-I&AP ba tla nna le tshono ya go romela ditshwaelo go fitlha kwa bofelong jwa nako ya tlhatlhoba ya BAR.

Ditshwaelo tsotlhe tse di amogetsweng di tla kwalwa le go akarediwa mo pegong e e romelwang kwa DMR gore go dirwe tshwetso.

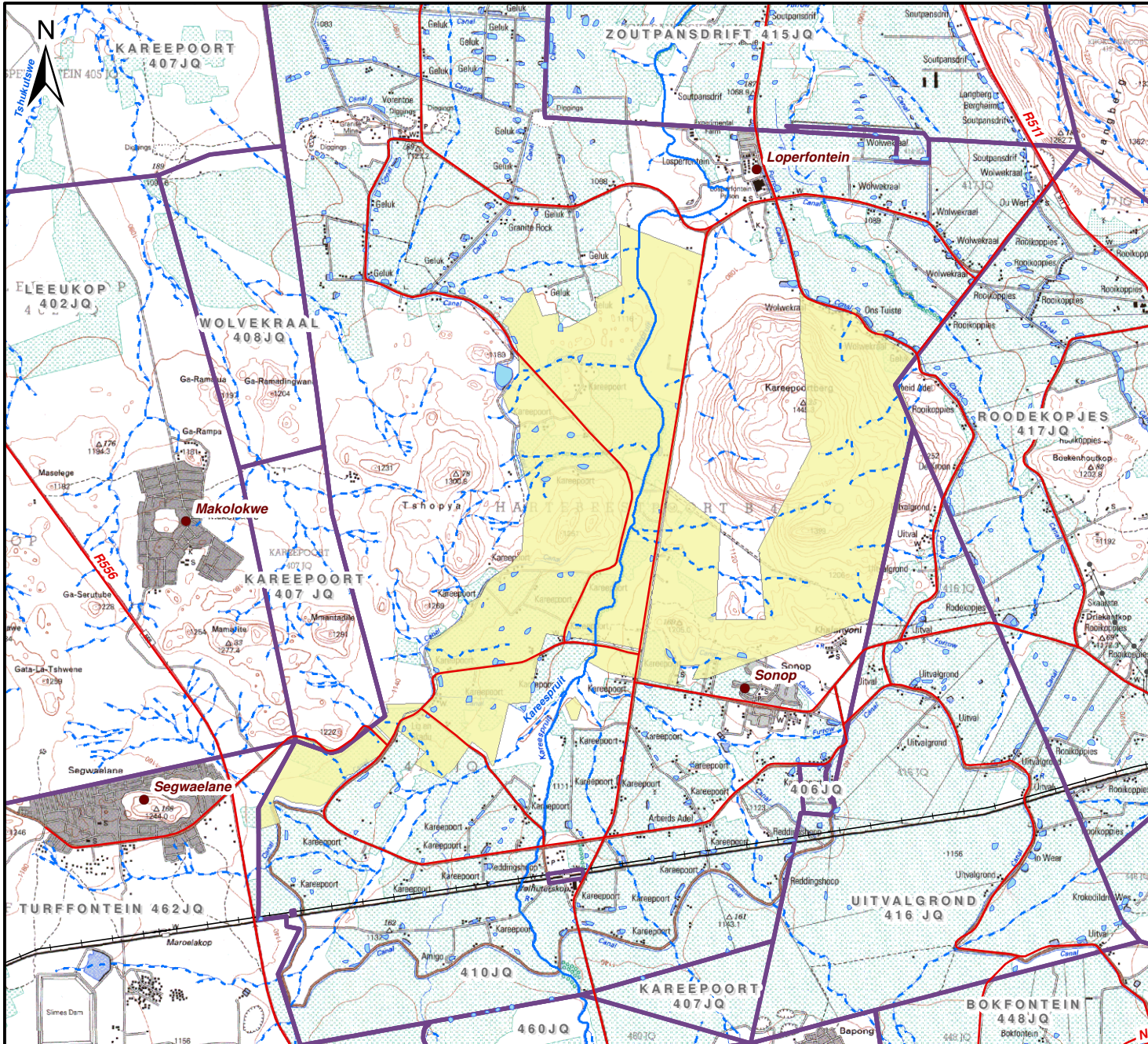
TSELA YA GO TSIBOGA

Ditsibogo mabapi le tokumente eno di ka nna tsa romelwa ka pampiri ya ditshwaelo e e tshwaragantsweng le eno le/kgotsa ka go buisana le motho wa dintlha tse di kwadilwang fa tlase.

YO GO TSHWANETSENG GA IKGOLAGANYA LE ENE

Reinett Mogotshi
(011) 467 0945 (Mogala) kgotsa
(011) 467 0978 (Fekese) kgotsa
rmogotshi@slrconsulting.com

SLR Consulting (Africa) (Pty) Ltd (SLR), feme e e ikemetseng ka nosi ya bagakolodi ka tsa tikologo, e tlhomilwe ke Inkosi Mining (Pty) Ltd go laola tiro ya tshekatsheko ya tikologo.



Tlhaloso ya Ditshwantsho tsa Mmapa

- Metse/Ditoropo
 - ▭ Melelwane ya Polasi
 - Ditsela
 - +— Seporo
 - Dinoka tse nang le metsi
 - - - Dinoka tse se nang le metsi
 - Matamo
 - Lefelo la Inkosi la Tshwanelo
- ya go batla di minerala

0 1 2 3 Km
 Scale: 1:80 000 @ A4
 Projection: Transverse Mercator
 Datum: Hartebeeshoek, Lo27

Inkosi Platinum (Pty) Ltd

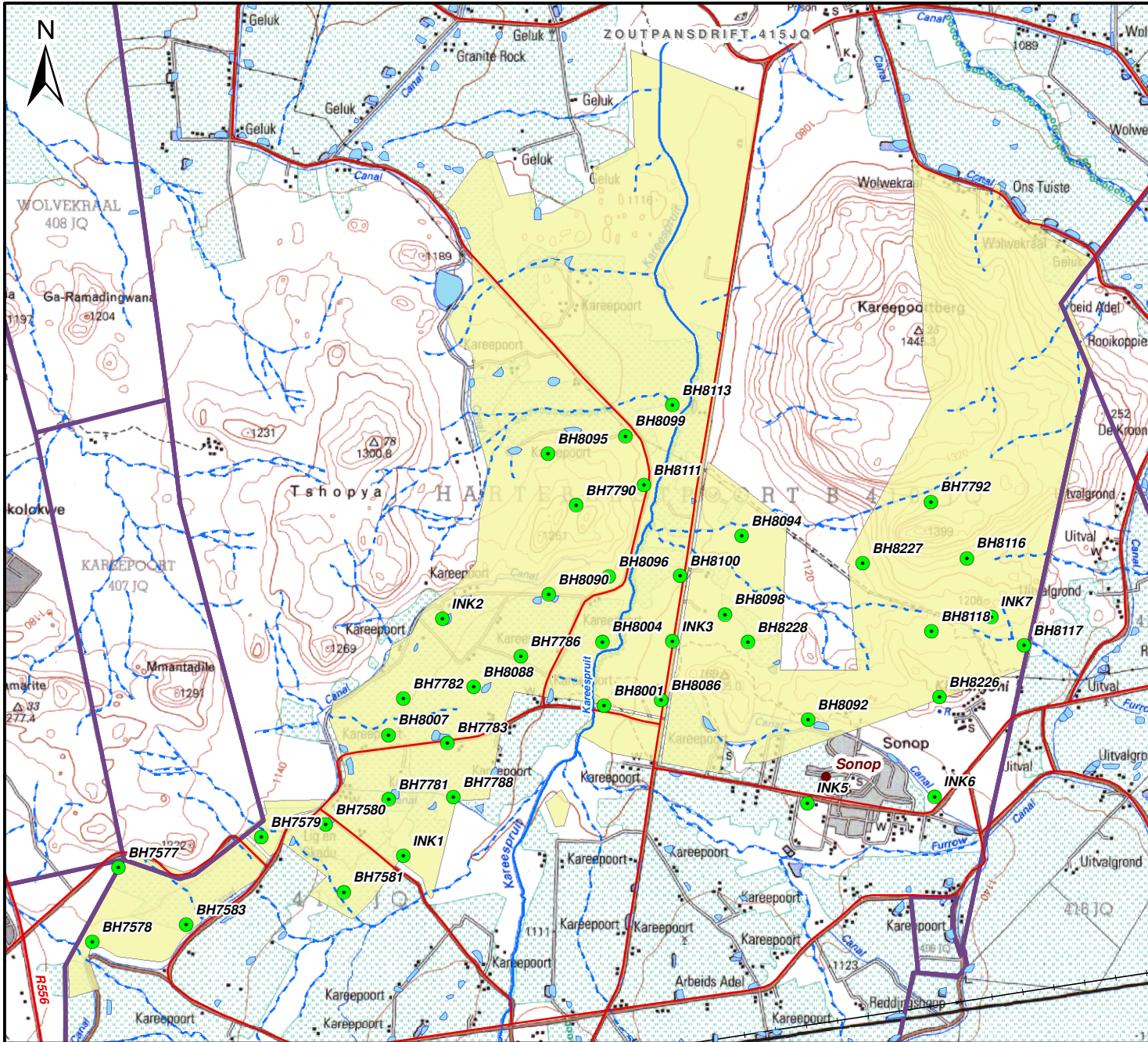
Setshwantsho 1

Thulaganyo ya Lefelo

SLR SLR Consulting (Africa) (Pty) Ltd
 P O Box 1596, Cramerview, 2060, South Africa
 Tel: +27 (11) 467-0945 Fax: +27 (11) 467-0978

710.09004.00013

2020/01/08



Tlhaloso ya Ditswantsho tsa Mmapa

- Metse/ Ditoropo
- ▭ Melelwane ya Polasi
- Ditsela
- +— Seporo
- Dinoka tse nang le metsi
- - - Dinoka tse se nang le metsi
- Matamo
- Lefelo la Inkosi la Tshwanelo
ya go batla di minerala
- Mafelo a meepo

0 1 Km
 Scale: 1:51 000 @ A4
 Projection: Transverse Mercator
 Datum: Hartebeeshoek, Lo27

Inkosi Platinum (Pty) Ltd

Setshwantsho 2

Mafelo a a neng a epilwe mo go one



SLR Consulting (Africa) (Pty) Ltd
 P O Box 1596, Cramerville, 2060, South Africa
 Tel: +27 (11) 467-0945 Fax: +27 (11) 467-0978

710.09004.00013

2020/01/27

TLHALOSO KA BOKHUTSWANE YA POROJEKE

TLHALOSO KA BOKHUTSHWANE

Tetelelo ya go batla dimenerala ya Inkosi e akaretsa dikarolo tse di farologaneng tsa polasi ya Hartebeestpoort B 410 JQ (Hartebeestpoort) (Setshwantsho 2).

Gareng ga 2005 go ya go 2014, Inkosi e ne ya simolola ditiro tsa go batla dimenerala mo polasing ya Hartebeestpoort, mo nakong e go neng ga epiwa dipetse tsa patlisiso e e letleletsweng. Di le 40.

Ditiro tsa go epa go batla dimenerala di ne di akaretsa go agiwa ga matlwana a a ka rutlololwang bonolo a botlhapelo, dikampa le ditselana tse go ka tsamaiwang mo go tsone ka nakwana fa go tlhokega gore go se ka ga tsamaiwa mo ditseleng tse di leng teng. Mo lefelong lengwe le lengwe le go epiwang mo go lone, fa go epa go se na go fediswa, tiro e ne ya emisiwa mo saeteng eno. Go emisiwa ga tiro go ne ga rulaganyediwa gore dipetse di tswalwe le go kanwa, go tloswa didirisiwa dipe tsa go epe, dikhemikhale tse di neng di tshogetse moo, le go tloswa le go katela mekoti le go lekalekanngwa ga mmu o o kokoaneng (fa go neng go epilwe gone le ditselana tsa go tseno) go dira gore dimela di boe di tlhoge mo lefelong leo.

Inkosi e kopela go emisa tetelelo ya yone ya batla dimenerala mo Hartebeestpoort (bona mabaka a a newang fa tlase) . Mafelo a a kgoreditsweng ke ditiro tseno tsa patlo ya dimenerala a tlogetswe gore dimela di kgone go tlhoga gape mo go one gore di dirisiwe ke badirisi ba lefatshe leo.

MABAKA A GO EMISA TETLELELO YA GO EPA GO BATLA DIMENERALA

Fa Boto ya Inkosi e se na go dira tiro ya go bona gore a porojeke ya dimenerala e tla atlega, e ne ya dira tshwetso ya gore e seka ya dira kopo ya tetelelo ya go epa dimenerala le go simolola tiro ya go epa, ka gone go bonwe gore porojeke eo ga e na go nna le mosola mo ikonoming go ya ka dipalo tse di solofetsweng tsa ikonomi (ke gore, ditshenyegelo, dituelelo, ditlhwatlhwa). Inkosi e dirile tshwetso ya go tlogela tetelelo ya Patlo ya Dimenerala ka go dira kopo ya go tswala. Go tlogela tetelelo eo ya go batla dimenerala go tla letlelela gore batho ba sele ba kgone go dikopo tse disha mo DMR.

SEEMO SA TIKOLOGO

Karolo eno e na le tlhaloso e khutshwane ya maemo a a tlwaelegielng a lefelo la tetelelo ya go epa go batla dimenerala.

Tlelaemete ya lefelo la tetelelo ya go batla dimenerala ke le le batlileng le nna sekaka, le le nang le dipula tsa selemo tsa selekanyo sa 29 mm ka ngwaga le dithemperetshara tse di fetang 40°C ka dikgwedi tsa selemo. Ga go na pula mariga mme dithemperetshara ke tse di magareng mme go nna le segagane ka dinako tse dingwe fela .

Popego ya lefatshe ya lefelo la tetelelo ya go batla dimenerala le lefelo le le mo tikologong ke dipowa tse di fologelang le go tlhatlogela bonolo le naga e e papametseng go ya kwa bophirima e go nang le dithota tse di ntshang tlhogo kwa botlhabatsatsi. Bogodimo bo magareng ga dimitara di ka nna 1080 le 1445 go tswa fa tekanyong ya lewatle.

Go ya ka popego ya lefatshe, lefelo la tetelelo ya go batla dimenerala le na le matlapa a mefuta e e farologaneng a *Rustenburg Layered Suites* a *Bushveld Igneous Complex*. Matlapa a a ntshitseng tlhogo a go kwadilweng ka one a na le a *gabbro-norite* a seka-phiramiti a a etang a tlhatlagana le a *anorthosite* mme kwa tlase ga one go na le matlapa a mofuta wa *norite-anorthosites* ya Mathagama e go nang le matlapa a *Merensky riff* mo go one..

Mefuta ya mmu o o bonwang mo lefelong la tetelelo ya go batla dimenerala le mo tikologong ya lone ke mmu wa mmala o montsho o o bidiwang *Calcic Vertisols* le *Umbric Leptosols*. Mmu wa *Calcic Vertisols* o seloko thata mme o siametse temo fa fela go na le pula e ntsi kgotsa metsi a mantsi a a nosetsang.

Lefelo le le nang le tetla ya go batla dimenerala le mo lefelong la mefuta ya ditlhare tsa *Savanna Biome* le go nang le *Marikana Thornveld* le *Norite Koppies Bushveld* mo go lone. Lefelo le le bidiwa la mofuta wa Lefelo la Ditshedi tse di Farologaneng tsa Botlhokwa le Lefelo la Tshegetso ya Tsalano ya Ditshedi le Tikologo ya tsone (*Ecological Support Area*) mme le tsewa e le bonno jo bogolo jwa manong.

Lefelo le le nang le tetelelo ya go batla dimenerala mo go lone le gaufi le tshimologo ya mogobe wa bone wa A21J wa noka ya Crocodile West. Lefelo le le nang le tetelelo ya go batla dimenerala le na le medutela e mentsi e e senang metsi ka nako tsotlhe. Noka e e elelang nako yotlhe ya Kareespruit, e e fokotsegang go sekae e kgabaganya molelwane wa lefelo le go letleletsweng go batla dimenerala mo go lone. Metsi a a tswang mo Kareespruit a dirisiwa mo malapeng le mo temothuung.

Go na le dilo tsa boswa di le mmalwa tse di bonweng mo lefelong le go letleletsweng go batla dimenerala mo go lone, tsone di akaretsa mafelo a Motlha wa Morago a go Dirwa ga Tshipi (*Late Iron Age*), gammogo le mabitla a mabedi. Gantsi mabitla a ke a botlhokwa jo bogolo mme a sireleditswe go ya ka Molao wa Dilo tsa Boswa jwa Setshaba (*National Heritage Resources Act [NHA]*) (No 25 of 1999).

Mo lefelong le go letleletsweng go batla dimenerala mo go lone le tikologo ya lone go dirwa ditiro tse di farologaneng tsa ditlhatshana tsa tlhago, ditiro tsa temo, tsa bonno le tsa meepo.

KAFA TIKOLOGO/SETSO/IKONOMI LE BATHO BA KA AMEGANG KA TENG

Ka baka la go tswalwa ga tetelelo ya go batla dimenerala, go lebeleletse gore dikamego e nne fela tsa:

- Tatlhegelo ya ditshedi tse di farologaneng le kafa lefatshe le neng le dirisiwang ka teng pele ga go epa fa e le gore go na le kgotlelo nngwe e e diragalang morago (se go akanngwang gore se ka nna sa seka sa diragala) le fa e le gore dimela ga di kgone go tlhoga gape (seno se tla tlhomamisiwa);
- Dithole (fa e le gore lefelo le tiro e neng e dirwa mo go lone ga le a baakanngwa sentle);
- Kgonego ya go latlhegelwa ga borakonteraka ke ditshwanelo tsa loago le ikonomi ka gore ba seka ba tswelala ba na le tshwanelo ya go epa go batla dimenerala, mme go akanngwa gore borakonteraka ba tla bona dikonteraka tse dingwe go sele; le
- Ditsomepelo tse baepi bangwe ba ba batlang dimenerala ba ka nnang le tsone.

TIRO YA THEBOLELO YA GO DIRA MO TIKOLOGONG

Tiro ya tshekatsheko ya tikologo e naya:

- Tshedimosetso ka porojeke le tikologo e e dirwang mo go yone;
- E bontsha kafa tikologo/setso/ikonomi le batho di tlileng go amega ka teng ka tsela e e sa siamang le e e siameng, e dirisana le bo-I&AP ; le
- Dipego tsa dikgato tse di tshwanetseng go tsewa ke batsamaisi go baakanya dikamego tseo mme e akaretsa se se batlegang mabapi le dithulaganyo tsa go tlhokomela tiro (fa go tlhokega).

Fa tlase fano go nwa dikgato tsa tiro le tekanyetso ya nako tse di ka nnang tsa tlhokega .

KGATO I - Kgato ya pele ya go dira kopo (Ferikgong go ya go Tlhakole 2020)

- Kopano ya kitsiso ka porojeke ya ba Communal Property Association, Pusomorafe (*Tribal Authority*) le makhanselara a kgotla; le
- Go itsise balaodi ba ba nayang ditshwaelo le bo-I&AP ka porojeke e e kopelwang le tshekatsheko ya tikologo (ka kitsiso ya mo pampiring ya dikgang, dikitsiso tsa mo saeteng le BID);

KGATO II – Kgato ya BAR (Tlhakole go ya go Moranang 2020)

- Go romelwa ga kopo ya NEMA kwa DMR;
- Go kwalwa ga BAR le tshobokanyo, go e naya bo-I&AP le balaodi ba ba tshwaelang gore ba e tlhatlhobe malatsi a le 30 (Tlhakole/Mopitlwe 2020); le
- Tlhabolola BAR ka ditshwaelo tse di amogetsweng ka nako ya tlhatlhobo ya morafe.

KGATO III – Kgato ya tlhatlhobo ya balaodi ba ba nang le kitso (Motsheganong go ya go Phatwe 2020)

- Romela BAR (e na le ditshwaelo tse di neilweng ka nako ya tlhatlhobo) kwa DMR gore go dirwe tshwetso (bofelo jwa Motsheganong 2020) (malatsi a le 107 a nako e e beilweng ke molao a go dira tshwetso); le
- Romela ditshwetso kwa go bo-I&AP ka dathabeising ya projeke.

BATHO BA BA TSHWARAGANENG LE TIRO YA TSHEKATSHEKO YA TIKOLOGO

Bo-I&AP

- Beng ba lefatshe le badirisi ba lefatshe mo kgaolong ya tshwanelo ya go batla dimenerala; le
- Ditheo tse Eseng tsa Puso ka Botlalo.

BALAOADI BA BA NANG LE KITSO LE BA BA NAYANG DITSHWAELO

- Lefapha la Dimenerala (*Department of Mineral Resources* [DMR]) la Porofense ya Bokone Bophirima;
- North West Department of Economic Development, Environment, Conservation and Tourism (DEDECT);
- Lefapha la Metsi le Ntsholeswe (*Department of Water and Sanitation* [DWS]) la Porofense ya Bokone Bophirima;
- Lefapha la Porofense ya Bokone Bophirima ya Tlhabolola ya Metseselegae le Paakanyo ya Lefatshe (*North West Department of Rural Development and Land Reform* [NWRDLR]);
- *South Africa Heritage Resource Agency* (SAHRA) le /kgotsa *North West Provincial Heritage Resource Authority* (NWPRA); le
- Lefapha la Porofense ya Bokone Bophirima la Temothuo, Dikgwa le Tshwaro ya Ditlhapi (*North West Department of Agriculture, Forestry and Fisheries* [NWDAFF]).

BALAOADI BA SELEGAE

- Mmasepala wa Selegae wa Madibeng le Rustenburg (go akaretsa le dikhanselara tsa kgotla); le
- Mmasepala wa Kgaolo ya Bojanala Platinum.

BALAOADI BA SETSO

- * Bapo Ba Mogale.

Re kopa gore o re itsise fa e le gore go na le batho ba bangwe ntle le bano ba ba tshwanetseng go akarediwa.

Setshwantsho 1 : Sekai sa go busediwa maamong ga lefelo le go neng go epilwe mo go lone mo lefelong le go neng go letleletsweng go batla dimenerala mo go lone



INKOSI MINING (PTY) LTD

TOKUMENTE YA TLHALOSO YA GO EMISIWA GA TETLELELO YA GO BATLA DIMENERALA MO HARTEBEESTPOORT 410 JQ

LETLHA		NAKO		
DINTLHA KA MOTHO YO O NANG LE KGATLHEGO LE YO O AMEGANG				
LEINA				
O NA LE KGATLHEGO MO POROJEKENG YA GO EPA				
ATERESE YA POSO / MMILA				
		KHOUTU YA POSO		
NOMORO YA MOGALA YA KWA TIRONG/ MOTSHEGARE		NOMORO YA FEKESÉ YA KWA TIRONG/ MOTSHEGARE		
NOMORO YA SELULAFOUNO		ATERESE YA IMEILE		
KA KOPO NKWADISE SEMOLAO JAAKA WA SETLHOPHA SA BANALESEABE LE BAKGATLHEGI (I&AP) GORE KE KGONE GO AMOGELA TSHEDIMOSÉTSO GO YA PELE LE DIKITSISO KA NAKO YA TIRO YA TSHEKATHEKO YA KAMEGO YA TIKOLOLO			EE	NNYAA
O KA RATA GO AMOGELA DIKITSO TSA GAGO JANG?			IMEILE:	
			POSO E E KWADISITSWENG	
			FEKESÉ:	

KA KOPO KWALA DITSHWAELO TSA GAGO LE DIPOTSO FA (re kopa gore o dirise dipampiri tse dingwe fa o batla)

--

KA KOPO TSENYA LE BADIRI-KA-NNA BA BA LATELANG/DITSALA/BAAGISANI JAAKA BO-I&AP BA POROJEKE ENO.

Ka kopo busetsa diforomo tse di tladitsweng kwa go:

Reinett Mogotshi
SLR Consulting (South Africa) (Pty) Ltd
(011) 467 0945 (Mogala) le/kgotsa (011) 467 0978 (Fekese)
rmogotshi@slrconsulting.com

RE LEBOGELA SEABE SA GAGO!!!



INKOSI MINING AND IMBASA PLATINUM (PTY) LTD

**DOCUMENT RECEIPT FORM FOR THE CLOSURE OF THE
HARTEBEESTPOORT B 410 JQ PROSPECTING RIGHT**

This is to certify that I

Othaniel Palo Mosielele

in my capacity as a representative of

WARD COUNSELLOR

have received the following document:

PLEASE COMPLETE AND TICK RELEVANT BOX

36x English hardcopies of the background information document for the closure of the Hartebeestpoort B 410 JQ Prospecting Right for Imbasa Platinum (Pty) Ltd	<input checked="" type="checkbox"/>
30x Setswana hardcopies of the background information document for the closure of the Hartebeestpoort B 410 JQ Prospecting Right for Imbasa Platinum (Pty) Ltd	<input checked="" type="checkbox"/>
30x English hardcopies of the background information document for the closure of the Hartebeestpoort B 410 JQ Prospecting Right for Inkosi Mining (Pty) Ltd	<input checked="" type="checkbox"/>
36x Setswana hardcopies of the background information document for the closure of the Hartebeestpoort B 410 JQ Prospecting Right for Inkosi Mining (Pty) Ltd	<input checked="" type="checkbox"/>

Date: *29/01/2020*

Signature/ Stamp:
Madibeng Local Municipality
Ward 040
Clr: *O.P. Mosielele*
Date: *2020/01/29*



INKOSI MINING AND IMBASA PLATINUM (PTY) LTD

**DOCUMENT RECEIPT FORM FOR THE CLOSURE OF THE
HARTEBEESTPOORT B 410 JQ PROSPECTING RIGHT**

This is to certify that I

GEORGE L. MORE

in my capacity as a representative of

ACTING ICGOSANA - BAKWENA BA MOGOPA TRIBAL OFFICE

have received the following document:

PLEASE COMPLETE AND TICK RELEVANT BOX

15x English hardcopies of the background information document for the closure of the Hartebeestpoort B 410 JQ Prospecting Right for Imbasa Platinum (Pty) Ltd	<input checked="" type="checkbox"/>
15x Setswana hardcopies of the background information document for the closure of the Hartebeestpoort B 410 JQ Prospecting Right for Imbasa Platinum (Pty) Ltd	<input checked="" type="checkbox"/>
15x English hardcopies of the background information document for the closure of the Hartebeestpoort B 410 JQ Prospecting Right for Inkosi Mining (Pty) Ltd	<input checked="" type="checkbox"/>
15x Setswana hardcopies of the background information document for the closure of the Hartebeestpoort B 410 JQ Prospecting Right for Inkosi Mining (Pty) Ltd	<input checked="" type="checkbox"/>

Date: *29/01/2020*

Signature/ Stamp:

Reinett Mogotshi

From: Reinett Mogotshi
Sent: Thursday, 30 January 2020 12:37
To: Reinett Mogotshi
Subject: Inkosi Mining Prospecting Right Closure: DMR reference number: NW30/5/1/1/3/2/2/1/150 PR
Attachments: 20200128 - BID -Inkosi Closure Final.pdf; 20200128 - BID-Inkosi Closure_Tswana Final.pdf

Bcc: Obakeng.lebethe@yahoo.com; meintjieskr@telkomsa.net; info@dla-investments.co.za; greta@dla-investments.co.za; adam@lonplats.com; bruwerboerdery@gmail.com; martinus.bruwer@genmills.com; Keabetswethlapane37@gmail.com; reception@ang.co.za; Tashnee@exdim.co.za; patricia@redgraniti.co.za; bridget@eaglegranite.co.za; arther.hayes7@gmail.com; plessis1@gmail.com; Sebopapontsho10@gmail.com; enquiries@sasol.com; victor.tities@drdlr.gov.za; info@magaliescitrus.co.za; shaun@ncmstransport.co.za; enalubi@gmail.com; hills@absamail.co.za; lourenspronicultureurs@worldonline.co.za; raphadum@foreign.gov.za; henry@crimetechnology.co.za; mjb@marlin.co.za; fanie@tombstoneafrica.co.za; christelle.jacobs@syngenta.com; theaj@camelotmining.co.za; dirk.gertenbach@lonmin.com; KEAOBAKAM@CORNASTONE.CO.ZA; davehtr@hotmail.com; reotshepile@bafokeng.com; Modisaotsile.Mokate@bafokeng.com; suzan.aidelomo@transnet.net; Chris.Tshisevhe@dmr.gov.za; desmond.makamu@dmr.gov.za; Phumudzo.nethwadzi@dmr.gov.za; emahlangu@nwpg.gov.za; mmohlalisi@nwpg.gov.za; Inonkomo@nwpg.gov.za; ramashalal@dwa.gov.za; ntshangases@dwa.gov.za; pkrisjan@nwpg.gov.za; Matshidiso.Collins@drdlr.gov.za; pmahloko@nwpg.gov.za; nhiggitt@sahra.org.za; ddmogonediswa@nwpg.gov.za; katmogale@nwpg.gov.za; vanwykj@nwpg.gov.za; kmekgoe@rustenburg.gov.za; jamesm@bojanala.gov.za; ingridk@bojanala.gov.za; municipalmanager@bojanala.gov.za; mm@bojanala.gov.za; AmandaB@bojanala.gov.za; keabetswe.mothupi@drdlr.gov.za; stvmaimane@gmail.com; Mudau462@gmail.com

Dear Interested and Affected Party

Inkosi Mining (Pty) Limited holds a prospecting right (DMR reference number: NW30/5/1/1/3/2/2/1/150 PR) on the farm Hartebeestpoort B 410 JQ, located approximately 7 km from Brits within the Madibeng Local Municipality and Bojanala Platinum District Municipality in the North West Province.

Between 2005 and 2014, Inkosi undertook prospecting activities on the farm Hartebeestpoort B 410 JQ, during which time 40 approved exploration drill holes were drilled. The prospecting activities included the establishment of temporary portable ablution facilities, camps and temporary access tracks when deviations from existing access roads were required. For each drill site, once drilling was complete, the site was decommissioned. Decommissioning catered for the capping and sealing of boreholes, removal of any drilling equipment, chemicals and waste, removal and filling of sumps and ripping of compacted soils (at drill sites and access tracks) to allow for re-vegetation of the site. Inkosi is now planning to close its Hartebeestpoort B 410 JQ prospecting right.

Prior to the proposed closure of the prospecting right, Inkosi will need to obtain environmental authorisation from the Department of Mineral Resources (DMR). In support of this, Inkosi is required to submit a closure application in terms of Section 43(4) of the Mineral and Petroleum Resources Development Act (No. 28 of 2002) (MPRDA). In addition, the decommissioning of any activity requiring a closure certificate in terms of Section 43 of the MPRDA is an activity in

Listing Notice 1 under the EIA Regulations, 2014 (as amended) and a basic assessment process in terms of the National Environmental Management Act (No. 107 of 1998) (NEMA) is required. In this regard, the Environmental Impact Assessment Regulations being followed are Government Notice Regulation (GNR) 982 of 4 December 2014, as amended.

SLR Consulting (Africa) (Pty) Ltd (SLR), an independent firm of environmental consultants, has been appointed by Inkosi Mining (Pty) Ltd to manage the environmental assessment process.

The attached Background Information Document (BID) (in both English and Setswana) has been prepared to provide you with background information on the planned prospecting right closure and provide you with an opportunity to have input into the environmental assessment process.

Should you have any queries please contact SLR.

Thank you



Reinett Mogotshi

Junior Environmental Consultant

 +27 11 467 0945

 2032

 rmogotshi@slrconsulting.com

SLR Consulting
SLR Consulting (Johannesburg office)
Suite1 - Building D, Monte Circle
178 Montecasino Boulevard
Fourways, Johannesburg, Gauteng, 2191



 **WINNERS : International Business
Excellence Award, 2016**

Confidentiality Notice and Disclaimer

This communication and any attachment(s) contain information which is confidential and may also be legally privileged. It is intended for the exclusive use of the recipient(s) to whom it is addressed. If you have received this communication in error, please email us by return mail and then delete the email from your system together with any copies of it. Any views or opinions are solely those of the author and do not represent those of SLR Management Ltd, or any of its subsidiaries, unless specifically stated.



Reinett Mogotshi

Junior Environmental Consultant

 +27 11 467 0945

 2032

 rmogotshi@slrconsulting.com

SLR Consulting
SLR Consulting (Johannesburg office)
Suite1 - Building D, Monte Circle
178 Montecasino Boulevard
Fourways, Johannesburg, Gauteng, 2191



WINNERS: *International Business*
Excellence Award, 2016

Confidentiality Notice and Disclaimer

This communication and any attachment(s) contain information which is confidential and may also be legally privileged. It is intended for the exclusive use of the recipient(s) to whom it is addressed. If you have received this communication in error, please email us by return mail and then delete the email from your system together with any copies of it. Any views or opinions are solely those of the author and do not represent those of SLR Management Ltd, or any of its subsidiaries, unless specifically stated.

Network	Status	Scheduled	Submitted	StatusDate	CustomerID	SentData
MTN	SUBMITD	1/30/2020	1/30/2020			
Vodacom	SUBMITD	1/30/2020	1/30/2020			
Vodacom	SUBMITD	1/30/2020	1/30/2020			
Vodacom	SUBMITD	1/30/2020	1/30/2020			
Vodacom	SUBMITD	1/30/2020	1/30/2020			
MTN	SUBMITD	1/30/2020	1/30/2020			
MTN	SUBMITD	1/30/2020	1/30/2020			
MTN	SUBMITD	1/30/2020	1/30/2020			
MTN	SUBMITD	1/30/2020	1/30/2020			
CELL C	SUBMITD	1/30/2020	1/30/2020			
MTN	SUBMITD	1/30/2020	1/30/2020			
Vodacom	SUBMITD	1/30/2020	1/30/2020			
Vodacom	SUBMITD	1/30/2020	1/30/2020			
Vodacom	SUBMITD	1/30/2020	1/30/2020			
Vodacom	DELIVRD	1/30/2020	1/30/2020	1/30/2020		
Vodacom	DELIVRD	1/30/2020	1/30/2020	1/30/2020		
CELL C	DELIVRD	1/30/2020	1/30/2020	1/30/2020		
Vodacom	DELIVRD	1/30/2020	1/30/2020	1/30/2020		
Telkom Mc	DELIVRD	1/30/2020	1/30/2020	1/30/2020		
Vodacom	DELIVRD	1/30/2020	1/30/2020	1/30/2020		
Telkom Mc	UNDELIV	1/30/2020	1/30/2020	1/30/2020		
MTN	DELIVRD	1/30/2020	1/30/2020	1/30/2020		
Vodacom	DELIVRD	1/30/2020	1/30/2020	1/30/2020		
MTN	DELIVRD	1/30/2020	1/30/2020	1/30/2020		
Vodacom	DELIVRD	1/30/2020	1/30/2020	1/30/2020		
MTN	DELIVRD	1/30/2020	1/30/2020	1/30/2020		
Vodacom	DELIVRD	1/30/2020	1/30/2020	1/30/2020		
MTN	DELIVRD	1/30/2020	1/30/2020	1/30/2020		
Vodacom	DELIVRD	1/30/2020	1/30/2020	1/30/2020		
MTN	DELIVRD	1/30/2020	1/30/2020	1/30/2020		
Vodacom	DELIVRD	1/30/2020	1/30/2020	1/30/2020		
Telkom Mc	DELIVRD	1/30/2020	1/30/2020	1/30/2020		
CELL C	DELIVRD	1/30/2020	1/30/2020	1/30/2020		
Telkom Mc	DELIVRD	1/30/2020	1/30/2020	1/30/2020		
MTN	DELIVRD	1/30/2020	1/30/2020	1/30/2020		
Vodacom	DELIVRD	1/30/2020	1/30/2020	1/30/2020		
MTN	DELIVRD	1/30/2020	1/30/2020	1/30/2020		
Vodacom	DELIVRD	1/30/2020	1/30/2020	1/30/2020		
Vodacom	DELIVRD	1/30/2020	1/30/2020	1/30/2020		
Vodacom	DELIVRD	1/30/2020	1/30/2020	1/30/2020		
MTN	DELIVRD	1/30/2020	1/30/2020	1/30/2020		
Vodacom	DELIVRD	1/30/2020	1/30/2020	1/30/2020		
MTN	DELIVRD	1/30/2020	1/30/2020	1/30/2020		
MTN	DELIVRD	1/30/2020	1/30/2020	1/30/2020		
MTN	DELIVRD	1/30/2020	1/30/2020	1/30/2020		
MTN	DELIVRD	1/30/2020	1/30/2020	1/30/2020		
MTN	DELIVRD	1/30/2020	1/30/2020	1/30/2020		
Telkom Mc	DELIVRD	1/30/2020	1/30/2020	1/30/2020		
MTN	DELIVRD	1/30/2020	1/30/2020	1/30/2020		
MTN	DELIVRD	1/30/2020	1/30/2020	1/30/2020		
Vodacom	DELIVRD	1/30/2020	1/30/2020	1/30/2020		
MTN	DELIVRD	1/30/2020	1/30/2020	1/30/2020		
Vodacom	DELIVRD	1/30/2020	1/30/2020	1/30/2020		
Vodacom	DELIVRD	1/30/2020	1/30/2020	1/30/2020		
Vodacom	DELIVRD	1/30/2020	1/30/2020	1/30/2020		
Vodacom	DELIVRD	1/30/2020	1/30/2020	1/30/2020		
Vodacom	DELIVRD	1/30/2020	1/30/2020	1/30/2020		
Vodacom	DELIVRD	1/30/2020	1/30/2020	1/30/2020		
Vodacom	DELIVRD	1/30/2020	1/30/2020	1/30/2020		
Vodacom	DELIVRD	1/30/2020	1/30/2020	1/30/2020		
Vodacom	DELIVRD	1/30/2020	1/30/2020	1/30/2020		
Vodacom	DELIVRD	1/30/2020	1/30/2020	1/30/2020		
Vodacom	DELIVRD	1/30/2020	1/30/2020	1/30/2020		
Vodacom	DELIVRD	1/30/2020	1/30/2020	1/30/2020		
Vodacom	DELIVRD	1/30/2020	1/30/2020	1/30/2020		
Vodacom	DELIVRD	1/30/2020	1/30/2020	1/30/2020		
Vodacom	DELIVRD	1/30/2020	1/30/2020	1/30/2020		
Vodacom	DELIVRD	1/30/2020	1/30/2020	1/30/2020		
Vodacom	DELIVRD	1/30/2020	1/30/2020	1/30/2020		
Vodacom	DELIVRD	1/30/2020	1/30/2020	1/30/2020		
Vodacom	DELIVRD	1/30/2020	1/30/2020	1/30/2020		
Vodacom	DELIVRD	1/30/2020	1/30/2020	1/30/2020		
Vodacom	DELIVRD	1/30/2020	1/30/2020	1/30/2020		
Vodacom	DELIVRD	1/30/2020	1/30/2020	1/30/2020		
Vodacom	DELIVRD	1/30/2020	1/30/2020	1/30/2020		
Vodacom	DELIVRD	1/30/2020	1/30/2020	1/30/2020		
Vodacom	DELIVRD	1/30/2020	1/30/2020	1/30/2020		

Notice: Inkosi Mining is proposing to close its Hartebeestpoort B 410 JQ prospecting right (NW30/5/1/1/3/2/2/1/150 PR) , and in this regard a closure application will be submitted to the DMR. For more information, or to review a copy of the Background Information Document please contact Reinett Mogotshi of SLR (0114670945).ing is proposing to close its Hartebeestpoort B 410 JQ prospecting right (NW30/5/1/1/3/2/2/1/150 PR) , and in this regard a closure application will be submitted to the DMR. For more information, or to review a copy of the Background Information Document please contact Reinett Mogotshi of SLR (0114670945).

ACKNOWLEDGEMENT OF DOCUMENTS RECEIVED

REGISTRY KLERKSDORP OFFICE

Applicant /Holder of Right: INKOSI PLATINUM (PTY) LTD

File No: NW 30/5/1/1/2/150PR NW 30/5/1/...../3/2/1/.....EM

File No : NW 5/3/2/..... NW 6/2/2/.....

CHECKLIST: MINERAL LAW ADMINISTRATION

- Joint venture agreement / Bee
- Proof Of Consultation with Landowner/Interested/Affected Parties
- Other AMENDED RFA APPLICATION + STICK X1

CHECKLIST: MINE ENVIROMENTAL MANAGEMENT

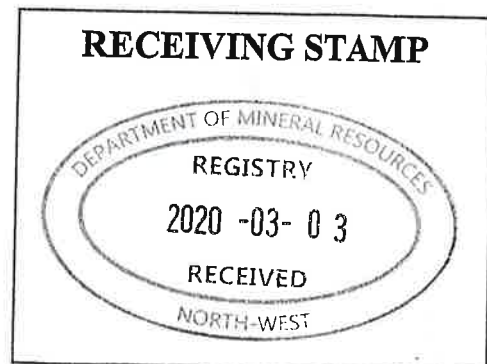
- 1 Original + Copies (Scoping Report / EMP/BAR / EIA)
- Closure application
- Memorandum Agreement
- Itemisation as required in terms of Section 24 P(3) of NEMA
- Letter from the Bank : Financial Provision
- Bank Guarantee

Receipt of the above-mentioned documentation is hereby acknowledged and the responsible sub-directorate will revert back to you once the documents has been assessed.

REGISTRY OFFICIAL

CLIENT SIGNATURE DUNCAN

COPY TO BE PROVIDED TO CLIENT





INKOSI AND IMBASA PLATINUM (PTY) LTD

**CLOSURE OF THE INKOSI GREATER PROSPECTING RIGHT
CLOSURE OF THE IMBASA PROSPECTING RIGHT**

This is to certify that I

BOITPELO G. LEKGENO

in my capacity as a representative of

DMR

have received the following document:

PLEASE COMPLETE AND TICK RELEVANT BOX

1x Hard copy of the NEMA Application for the CLOSURE OF THE INKOSI GREATER PROSPECTING RIGHT.	<input checked="" type="checkbox"/>
1x Hard copy of the NEMA Application for the CLOSURE OF THE IMBASA PROSPECTING RIGHT.	<input type="checkbox"/>
1x electronic copy (USB) of the NEMA Application for the CLOSURE OF THE INKOSI GREATER PROSPECTING RIGHT.	<input checked="" type="checkbox"/>
1x electronic copy (USB) of the NEMA Application for the CLOSURE OF THE IMBASA PROSPECTING RIGHT.	<input type="checkbox"/>

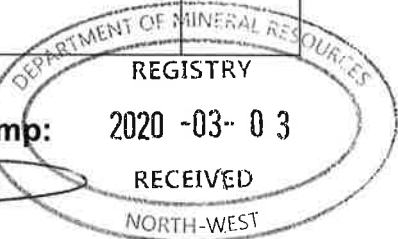
Date: 03 MARCH 2020

Signature/ Stamp:

2020 -03- 03

RECEIVED

NORTH-WEST



28 February 2020

**DEPARTMENT OF MINERAL RESOURCES
VAAL UNIVERSITY OF TECHNOLOGY
CNR OF MAGARETE PRINSLOO AND VOORTREKKER STREET
KLEKSDORP
2571**

ATTENTION: PHUMUDZO NETHWADZI**INKOSI PLATINUM (PTY) LTD****CLOSURE OF THE INKOSI GREATER PROSPECTING RIGHT (NW30/5/1/1/3/2/2/1/150 PR)****NEMA APPLICATION IN SUPPORT OF LISTED ACTIVITIES UNDER LISTING NOTICE 1 OF
THE EIA REGULATIONS, 2014 (AS AMENDED) REQUIRING A BASIC ASSESSMENT
PROCESS IN TERMS OF THE NATIONAL ENVIRONMENTAL MANAGEMENT ACT (NO. 107
OF 1998) (NEMA)**

Dear Phumudzo

Inkosi Platinum (Pty) Limited (Inkosi) hold a prospecting right (DMR reference number: NW30/5/1/1/3/2/2/1/150 PR) for platinum group metals, chrome ore, gold, silver, copper and nickel on various portions of the farm Hartebeestpoort B 410 JQ. The prospecting area is approximately 7 km from Brits within the Madibeng Local Municipality and Bojanala Platinum District Municipality in the North West Province.

Between 2005 and 2014, Inkosi undertook prospecting activities on the farm Hartebeestpoort B 410 JQ, during which time 38 approved exploration drill holes were drilled. Inkosi is now proposing to close its prospecting right. The areas disturbed by the prospecting activities have been allowed to re-vegetate for use by landowners and land users.



SLR Consulting (South Africa) (Proprietary) Limited

Registered Address: Suite 1 - Building D, Monte Circle,
178 Montecasino Boulevard, Fourways, Johannesburg, Gauteng, 2191
Postal Address: PO Box 1596, Cramerview, 2060, South Africa

Reg. No: 2007/005517/07
Vat No: 4630242198

Directors: R Hounscome, F Fredericks, D Junak

Johannesburg Office: Physical Address: Suite 1 - Building D, Monte Circle,
178 Montecasino Boulevard, Fourways, Johannesburg, Gauteng, 2191
Postal Address: PO Box 1596, Cramerview, 2060 ☎ +27 11 467 0945 ☎ +27 11 467 0978

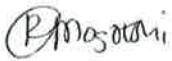
Cape Town Office: Physical Address: 5th Floor, Letterstedt House, Newlands on Main,
Cnr Main and Campground Roads, Newlands, Cape Town, Western Cape, 7700
Postal Address: PO Box 10145, Caledon Square, 7905 ☎ +27 21 461 1118 ☎ +27 21 461 1120

slrconsulting.com

It should be noted that a project-specific pre-application meeting has not been undertaken for this project. Reference has been made to a pre-application meeting held with the DMR on the 10th of May 2019 in support of a similar prospecting right closure application. In this regard, the same process has been adopted for the Inkosi prospecting right closure and is, therefore, applied to this application. In this regard, although the DMR indicated during this meeting that there is no need to submit a NEMA application, the applicant is of the opinion that a Basic Assessment process does apply due to the triggering of Activity 22 of Listing Notice 1 (GNR 983). Based on this, please find enclosed **1 hard copy and 1 electronic copy (USB)** of the NEMA Application. Appendix 9 of the NEMA application includes proof of payment of the R2000 NEMA Application fee.

Should there be any queries please do not hesitate to contact us.

Yours faithfully



Reinett Mogotshi

Tel: (011) 467 0945

Fax: (011) 467 0978

[Email: rmogotshi@slrconsulting.com](mailto:rmogotshi@slrconsulting.com)



OFFICE OF THE REGIONAL LAND CLAIMS COMMISSIONER: NORTH WEST

Cnr James Moroka and Sekame Drive, West Gallery, Mega City, MMABATHO 2735

Tel: (018) 388 7000/7008

Enquiries: Tonakgolo Setlhabi
Telephone: 018 388 7254
Email: Tonakgolo.setlhabi@drdlr.gov.za

By E-Mail: gdhlamini@slrconsulting.com

Dear G Dhlamini

**LAND CLAIM ENQUIRY – PORTIONS 605 – 609, 882, 960 – 965, 971, 972 R/E, 974 – 977,
1110, 1111, 1114-1116, 1142, 1143, 1144, 1147, 1149, 1150,
1153, 1154, 1159, 1170-1173, 1184, 1186-1189, 1191 & 1192
OF THE FARM HARTEBEESTPOORT B 410 JQ**

We refer to your letter dated 10th of January 2020.

We confirm that there is an existing land claim against the properties above, the claim was lodged under Madibeng Local Municipality within Bojanala District and the claim has been found to be valid and it is settled in phases. This reflects on the database for claims lodged by 31 December 1998.

Whilst the Commission takes reasonable care to ensure the accuracy of the information it provides, there are various factors that are beyond the Commission's control, particularly relating to claims that have been lodged but not yet gazetted such as:

1. Some Claimants referred to properties they claim dispossession of rights in land against using historical property descriptions which may not match the current property description; and
2. Some Claimants provided the geographic descriptions of the land they claim without mentioning the particular actual property description they claim dispossession of rights in land against.

The Commission therefore does not accept any liability whatsoever if through the process of further investigation of claims it is found that there is in fact a land claim in respect of the above property.

If you are aware of any change in the description of the above property after 19 June 1913 kindly supply us with such description so as to enable us to do further search.

Yours faithfully


MR. L.J. BOGATSU
CHIEF DIRECTOR

OFFICE OF THE REGIONAL LAND CLAIMS COMMISSIONER: NORTH WEST

DATE: 11/02/2020

Gugu Dhlamini

From: Gugu Dhlamini
Sent: 06 March 2020 02:18 PM
To: Victor Tities; Tonakgolo Setlhabi; Annelize Lee; Reuben Tlhabanelo; Tsietsi Sebata; Letlhogonolo Manwele
Cc: Keabetswe Mothupi; Agnes Montwedi; Reinett Mogotshi
Subject: RE: Land claimants contact details

Good day all,




I am doing a kind follow-up with reference to the emails below. There is now an urgency to the query as the claimants need to be contacted quite urgently before the release of our closure report.

Your help in this regard will be highly appreciated.

Regards,

Gugu Dhlamini

ESIA Intern

 2021
 +27 11 467 0945
 gdhlamini@slrconsulting.com

SLR Consulting (Africa) (Pty) Ltd
SLR Consulting (Johannesburg office)
Suite1 - Building D, Monte Circle
178 Montecasino Boulevard
Fourways
Johannesburg, 2191

From: Victor Tities <victor.tities@drdlr.gov.za>
Sent: 27 February 2020 03:13 PM
To: Gugu Dhlamini <gdhlamini@slrconsulting.com>; Tonakgolo Setlhabi <tonakgolo.setlhabi@drdlr.gov.za>; Annelize Lee <Annelize.Lee@drdlr.gov.za>; Reuben Tlhabanelo <reuben.tlhabanelo@drdlr.gov.za>; Tsietsi Sebata <tsietsi.sebata@drdlr.gov.za>; Letlhogonolo Manwele <letlhogonolo.manwele@drdlr.gov.za>
Cc: Keabetswe Mothupi <keabetswe.mothupi@drdlr.gov.za>; Agnes Montwedi <Agnes.Montwedi@drdlr.gov.za>
Subject: RE: Land claimants contact details

Rre Tlhabanelo and Sebata

Kindly check whether we have CPA's on the attached properties and provide Gugu with the numbers of the chairpersons.

Regards,

From: Victor Tities
Sent: Wednesday, 19 February 2020 11:57
To: 'Gugu Dhlamini'; Tonakgolo Setlhabi (tonakgolo.setlhabi@drdlr.gov.za); Annelize Lee (Annelize.Lee@drdlr.gov.za)
Cc: Keabetswe Mothupi; Agnes Montwedi (Agnes.Montwedi@drdlr.gov.za)
Subject: RE: Land claimants contact details

Dear Mr Setlhabi

Kindly see the below email and indicate whether you have the contact details of the claimants of the attached properties.

Myself, yourself and Annelize can discuss and agree on the process and possibilities of providing the requested contact details based on the status of the properties in question.

Regards,

Victor

From: Gugu Dhlamini [<mailto:gdhlamini@slrconsulting.com>]

Sent: Wednesday, 19 February 2020 11:34

To: Victor Tities

Subject: RE: Land claimants contact details

Dear Victor,

We are in the process of closing the prospecting rights for Imbasa Platinum (Pty) Limited and Inkosi Mining (Pty) Limited. Please find Background Information Documents attached.

Regards



Gugu Dhlamini

ESIA Intern

+27 11 467 0945

gdhlamini@slrconsulting.com

SLR Consulting (Africa) (Pty) Ltd
SLR Consulting (Johannesburg office), Johannesburg, 2191
Suite1 - Building D, Monte Circle
178 Montecasino Boulevard
Fourways



Confidentiality Notice and Limitation

This communication, and any attachment(s) contains information which is confidential and may also be legally privileged. It is intended for the exclusive use of the recipient(s) to whom it is addressed. If you are not the intended recipient, any disclosure, copying, distribution or action taken or not taken in reliance on it is prohibited and may be unlawful. If you have received this communication in error, please advise SLR by e-mail and then delete the e-mail from your system. As e-mails and any information sent with them may be intercepted, corrupted and/or delayed, SLR does not accept any liability for any errors or omissions in the message or any attachment howsoever caused after transmission.

Any advice or opinion is provided on the basis that it has been prepared by SLR with reasonable skill, care and diligence, taking account of the manpower, timescales and resources devoted to it by agreement with its Client. It is subject to the terms and conditions of any appointment to which it relates. Parties with whom SLR is not in a contractual relationship in relation to the subject of the message should not use or place reliance on any information, advice, recommendations and opinions in this message and any attachment(s) for any purpose.

© 2017 SLR Consulting Limited. All Rights Reserved.

From: Victor Tities <victor.tities@drdlr.gov.za>

Sent: 19 February 2020 11:21 AM

To: Gugu Dhlamini <gdhlamini@slrconsulting.com>

Cc: Reinett Mogotshi <rmogotshi@slrconsulting.com>; Keabetswe Mothupi <keabetswe.mothupi@drdlr.gov.za>;

Tonakgolo Setlhabi <tonakgolo.setlhabi@drdlr.gov.za>

Subject: RE: Land claimants contact details

Dear Gugu

Kindly provide the reasons why you requesting the contact details.

Regards,

From: Gugu Dhlamini [<mailto:gdhlamini@slrconsulting.com>]
Sent: Wednesday, 19 February 2020 11:10
To: Victor Tities
Cc: Reinett Mogotshi
Subject: Land claimants contact details
Importance: High

Good day Mr Tities,

As discussed over the phone, could you please kindly forward the contact details of the land claimants in the attached letters.

Thank you and kind regards,

Gugu
0114670945



Gugu Dhlamini

ESIA Intern

+27 11 467 0945

gdhlamini@slrconsulting.com

SLR Consulting (Africa) (Pty) Ltd
SLR Consulting (Johannesburg office), Johannesburg, 2191
Suite1 - Building D, Monte Circle
178 Montecasino Boulevard
Fourways



Confidentiality Notice and Limitation

This communication, and any attachment(s) contains information which is confidential and may also be legally privileged. It is intended for the exclusive use of the recipient(s) to whom it is addressed. If you are not the intended recipient, any disclosure, copying, distribution or action taken or not taken in reliance on it is prohibited and may be unlawful. If you have received this communication in error, please advise SLR by e-mail and then delete the e-mail from your system. As e-mails and any information sent with them may be intercepted, corrupted and/or delayed, SLR does not accept any liability for any errors or omissions in the message or any attachment howsoever caused after transmission.

Any advice or opinion is provided on the basis that it has been prepared by SLR with reasonable skill, care and diligence, taking account of the manpower, timescales and resources devoted to it by agreement with its Client. It is subject to the terms and conditions of any appointment to which it relates. Parties with whom SLR is not in a contractual relationship in relation to the subject of the message should not use or place reliance on any information, advice, recommendations and opinions in this message and any attachment(s) for any purpose.

© 2017 SLR Consulting Limited. All Rights Reserved.

Gugu Dhlamini

From: Gugu Dhlamini
Sent: 27 February 2020 02:46 PM
To: Victor Tities; Tonakgolo Setlhabi; Annelize Lee
Cc: Keabetswe Mothupi; Agnes Montwedi
Subject: RE: Land claimants contact details

Good day,

I am doing a kind follow-up with reference to the emails below.

Kind regards,



Gugu Dhlamini

ESIA Intern

+27 11 467 0945
gdhlamini@slrconsulting.com

SLR Consulting (Africa) (Pty) Ltd
SLR Consulting (Johannesburg office)
Suite1 - Building D, Monte Circle
178 Montecasino Boulevard
Fourways
Johannesburg, 2191



Confidentiality Notice and Limitation

This communication, and any attachment(s) contains information which is confidential and may also be legally privileged. It is intended for the exclusive use of the recipient(s) to whom it is addressed. If you are not the intended recipient, any disclosure, copying, distribution or action taken or not taken in reliance on it is prohibited and may be unlawful. If you have received this communication in error, please advise SLR by e-mail and then delete the e-mail from your system. As e-mails and any information sent with them may be intercepted, corrupted and/or delayed, SLR does not accept any liability for any errors or omissions in the message or any attachment howsoever caused after transmission.

Any advice or opinion is provided on the basis that it has been prepared by SLR with reasonable skill, care and diligence, taking account of the manpower, timescales and resources devoted to it by agreement with its Client. It is subject to the terms and conditions of any appointment to which it relates. Parties with whom SLR is not in a contractual relationship in relation to the subject of the message should not use or place reliance on any information, advice, recommendations and opinions in this message and any attachment(s) for any purpose.

© 2017 SLR Consulting Limited. All Rights Reserved.

From: Victor Tities <victor.tities@drdlr.gov.za>
Sent: 19 February 2020 11:53 AM
To: Gugu Dhlamini <gdhlamini@slrconsulting.com>; Tonakgolo Setlhabi <tonakgolo.setlhabi@drdlr.gov.za>; Annelize Lee <Annelize.Lee@drdlr.gov.za>
Cc: Keabetswe Mothupi <keabetswe.mothupi@drdlr.gov.za>; Agnes Montwedi <Agnes.Montwedi@drdlr.gov.za>
Subject: RE: Land claimants contact details

Dear Mr Setlhabi

Kindly see the below email and indicate whether you have the contact details of the claimants of the attached properties.

Myself, yourself and Annelize can discuss and agree on the process and possibilities of providing the requested contact details based on the status of the properties in question.

Regards,

Victor

From: Gugu Dhlamini [<mailto:gdhlamini@slrconsulting.com>]
Sent: Wednesday, 19 February 2020 11:34
To: Victor Tities
Subject: RE: Land claimants contact details

Dear Victor,

We are in the process of closing the prospecting rights for Imbasa Platinum (Pty) Limited and Inkosi Mining (Pty) Limited. Please find Background Information Documents attached.

Regards



Gugu Dhlamini

ESIA Intern

+27 11 467 0945

gdhlamini@slrconsulting.com

SLR Consulting (Africa) (Pty) Ltd
SLR Consulting (Johannesburg office), Johannesburg, 2191
Suite1 - Building D, Monte Circle
178 Montecasino Boulevard
Fourways



Confidentiality Notice and Limitation

This communication, and any attachment(s) contains information which is confidential and may also be legally privileged. It is intended for the exclusive use of the recipient(s) to whom it is addressed. If you are not the intended recipient, any disclosure, copying, distribution or action taken or not taken in reliance on it is prohibited and may be unlawful. If you have received this communication in error, please advise SLR by e-mail and then delete the e-mail from your system. As e-mails and any information sent with them may be intercepted, corrupted and/or delayed, SLR does not accept any liability for any errors or omissions in the message or any attachment howsoever caused after transmission.

Any advice or opinion is provided on the basis that it has been prepared by SLR with reasonable skill, care and diligence, taking account of the manpower, timescales and resources devoted to it by agreement with its Client. It is subject to the terms and conditions of any appointment to which it relates. Parties with whom SLR is not in a contractual relationship in relation to the subject of the message should not use or place reliance on any information, advice, recommendations and opinions in this message and any attachment(s) for any purpose.

© 2017 SLR Consulting Limited. All Rights Reserved.

From: Victor Tities <victor.tities@drdlr.gov.za>
Sent: 19 February 2020 11:21 AM
To: Gugu Dhlamini <gdhlamini@slrconsulting.com>
Cc: Reinett Mogotshi <rmogotshi@slrconsulting.com>; Keabetswe Mothupi <keabetswe.mothupi@drdlr.gov.za>;
Tonakgolo Setlhabi <tonakgolo.setlhabi@drdlr.gov.za>
Subject: RE: Land claimants contact details

Dear Gugu

Kindly provide the reasons why you requesting the contact details.

Regards,

From: Gugu Dhlamini [<mailto:gdhlamini@slrconsulting.com>]
Sent: Wednesday, 19 February 2020 11:10
To: Victor Tities
Cc: Reinett Mogotshi
Subject: Land claimants contact details
Importance: High

Good day Mr Tities,

As discussed over the phone, could you please kindly forward the contact details of the land claimants in the attached letters.

Thank you and kind regards,

Gugu
0114670945



Gugu Dhlamini

ESIA Intern

+27 11 467 0945

gdhlamini@slrconsulting.com

SLR Consulting (Africa) (Pty) Ltd
SLR Consulting (Johannesburg office), Johannesburg, 2191
Suite1 - Building D, Monte Circle
178 Montecasino Boulevard
Fourways



Confidentiality Notice and Limitation

This communication, and any attachment(s) contains information which is confidential and may also be legally privileged. It is intended for the exclusive use of the recipient(s) to whom it is addressed. If you are not the intended recipient, any disclosure, copying, distribution or action taken or not taken in reliance on it is prohibited and may be unlawful. If you have received this communication in error, please advise SLR by e-mail and then delete the e-mail from your system. As e-mails and any information sent with them may be intercepted, corrupted and/or delayed, SLR does not accept any liability for any errors or omissions in the message or any attachment howsoever caused after transmission.

Any advice or opinion is provided on the basis that it has been prepared by SLR with reasonable skill, care and diligence, taking account of the manpower, timescales and resources devoted to it by agreement with its Client. It is subject to the terms and conditions of any appointment to which it relates. Parties with whom SLR is not in a contractual relationship in relation to the subject of the message should not use or place reliance on any information, advice, recommendations and opinions in this message and any attachment(s) for any purpose.

© 2017 SLR Consulting Limited. All Rights Reserved.

Our Ref:



an agency of the
Department of Arts and Culture

T: +27 21 462 4502 | F: +27 21 462 4509 | E: info@sahra.org.za
South African Heritage Resources Agency | 111 Harrington Street | Cape Town
P.O. Box 4637 | Cape Town | 8001
www.sahra.org.za

Enquiries: Natasha Higgitt
Tel: 021 462 4502
Email: nhiggitt@sahra.org.za
CaseID: 14798

Date: Friday February 21, 2020
Page No: 1

Interim Comment

In terms of Section 38(3), 38(8) of the National Heritage Resources Act (Act 25 of 1999)

Attention: Impala Platinum Limited

PO Box 5683
RUSTENBURG
0300

Inkosi Mining (Pty) Limited (Inkosi) holds a prospecting right (DMR reference number (NW30/5/1/1/3/2/2/1/150 PR) for platinum group metals, chrome ore, copper ore and nickel ore on various portions of the farm Hartebeestpoort B 410 JQ. The prospecting area is approximately 7 km from Brits within the Madibeng Local Municipality and Bojanala Platinum District Municipality in the North West Province.

Thank you for notifying SAHRA of the Environmental Authorisation (EA) and Closure of a Prospecting Right on Hartebeestpoort B 410 JQ, near Brits, in the North West Province (NW 30/5/1/1/3/2/2/1/150 PR).

As the proposed development is undergoing an EA Application process in terms of the National Environmental Management Act, 107 of 1998 (NEMA), NEMA Environmental Impact Assessment (EIA) Regulations for activities that trigger the Mineral and Petroleum Resources Development Act, No 28 of 2002 (MPRDA)(As amended), it is incumbent on the developer to ensure that a **Heritage Impact Assessment (HIA)** is done as per section 38(3) and 38(8) of the National Heritage Resources Act, Act 25 of 1999 (NHRA). This must include an archaeological component and any other applicable heritage components. The HIA must be conducted **as part of the** EA Application in terms of NEMA and the NEMA EIA Regulations.

The quickest process to follow for the archaeological component would be to contract a qualified archaeologist (see www.asapa.co.za or www.aphp.org.za to provide an Archaeological Impact Assessment (AIA). The AIA must comply with the SAHRA 2007 Minimum Standards: Archaeological and Palaeontological Component of Impact Assessments. The Minimum Standards make reference to a Letter of Recommendation for Exemption from further studies that the appointed specialist may submit, should they feel that it is appropriate.

No further assessment of palaeontological resources is required as the development footprint is located within

Our Ref:



an agency of the
Department of Arts and Culture

T: +27 21 462 4502 | F: +27 21 462 4509 | E: info@sahra.org.za
South African Heritage Resources Agency | 111 Harrington Street | Cape Town
P.O. Box 4637 | Cape Town | 8001
www.sahra.org.za

Enquiries: Natasha Higgitt
Tel: 021 462 4502
Email: nhiggitt@sahra.org.za
CaseID: 14798

Date: Friday February 21, 2020
Page No: 2

an area of insignificant sensitivity as per the SAHRIS PalaeoSensitivity map.

Any other heritage resources as defined in section 3 of the NHRA that may be impacted, such as built structures over 60 years old, sites of cultural significance associated with oral histories, burial grounds and graves, graves of victims of conflict, and cultural landscapes or viewsapes must also be assessed.

The draft BAR with appendices must be submitted to the SAHRIS application at the beginning of the Public Review period so that informed comments may be issued.

Should you have any further queries, please contact the designated official using the case number quoted above in the case header.

Yours faithfully

Natasha Higgitt
Heritage Officer
South African Heritage Resources Agency

Phillip Hine
Manager: Archaeology, Palaeontology and Meteorites Unit
South African Heritage Resources Agency

ADMIN:

CLOSURE OF THE HARTEBEESTPOORT B 410 JQ PROSPECTING RIGHT

Our Ref:



an agency of the
Department of Arts and Culture

T: +27 21 462 4502 | F: +27 21 462 4509 | E: info@sahra.org.za
South African Heritage Resources Agency | 111 Harrington Street | Cape Town
P.O. Box 4637 | Cape Town | 8001
www.sahra.org.za

Enquiries: Natasha Higgitt
Tel: 021 462 4502
Email: nhiggitt@sahra.org.za
CaseID: 14798

Date: Friday February 21, 2020
Page No: 3

Direct URL to case: <http://www.sahra.org.za/node/533671>
(, Ref: (NW30/5/1/1/3/2/2/1/150 PR))

Terms & Conditions:

1. This approval does not exonerate the applicant from obtaining local authority approval or any other necessary approval for proposed work.
2. If any heritage resources, including graves or human remains, are encountered they must be reported to SAHRA immediately.
3. SAHRA reserves the right to request additional information as required.

Reinett Mogotshi

From: Lynette Denner <lynette36@gmail.com>
Sent: Friday, 07 February 2020 09:29
To: Reinett Mogotshi
Subject: Inkosi Greater PR Closure/Imbasa Platinum Closure

Goodday

With this e mail we want to submit our details as a intrested and/or affected party.
For projects:

Inkosi GReater PR closure and
Imbasa Platinum (Pty) Ltd PR Closure.

Our details:

Willem and Lynette du Plessis
Cell: 082 776 8171
P.o. Box 4920
Brits
0250

Thanks
Willem and Lynette du Plessis

Reinett Mogotshi

From: Natasha Higgitt <nhiggitt@sahra.org.za>
Sent: Thursday, 30 January 2020 14:16
To: Reinett Mogotshi
Subject: RE: Inkosi Mining Prospecting Right Closure: DMR reference number: NW30/5/1/1/3/2/2/1/150 PR

Good afternoon,

Please note that all development applications are processed via our online portal, the South African Heritage Resources Information System (SAHRIS) found at the following link: <http://sahra.org.za/sahris/>. We do not accept emailed, posted, hardcopy, faxed, website links or DropBox links as official submissions.

Please create an application on SAHRIS and upload all documents pertaining to the Environmental Authorisation Application Process. As per section 38(8) of the National Heritage Resources Act, Act 25 of 1999 (NHRA), an assessment of heritage resources must form part of the process and the assessment must comply with section 38(3) of the NHRA.

Once all documents including all appendices are uploaded to the case application, please ensure that the status of the case is changed from DRAFT to SUBMITTED. Please ensure that all documents produced as part of the EA process are submitted as part of the application, and are submitted to SAHRA at the beginning of the Public Review periods. Once all these documents have been uploaded, I will be able to issue an informed comment as per section 38(4) and 38(8) of the NHRA.

Kind regards,

From: Reinett Mogotshi <rmogotshi@slrconsulting.com>
Sent: Thursday, 30 January 2020 12:37
To: Reinett Mogotshi <rmogotshi@slrconsulting.com>
Subject: Inkosi Mining Prospecting Right Closure: DMR reference number: NW30/5/1/1/3/2/2/1/150 PR

Dear Interested and Affected Party

Inkosi Mining (Pty) Limited holds a prospecting right (DMR reference number: NW30/5/1/1/3/2/2/1/150 PR) on the farm Hartebeestpoort B 410 JQ, located approximately 7 km from Brits within the Madibeng Local Municipality and Bojanala Platinum District Municipality in the North West Province.

Between 2005 and 2014, Inkosi undertook prospecting activities on the farm Hartebeestpoort B 410 JQ, during which time 40 approved exploration drill holes were drilled. The prospecting activities included the establishment of temporary portable ablution facilities, camps and temporary access tracks when deviations from existing access roads were required. For each drill site, once drilling was complete, the site was decommissioned. Decommissioning catered for the capping and sealing of boreholes, removal of any drilling equipment, chemicals and waste, removal and filling of sumps and ripping of compacted soils (at drill sites and access tracks) to allow for re-vegetation of the site. Inkosi is now planning to close its Hartebeestpoort B 410 JQ prospecting right.

Prior to the proposed closure of the prospecting right, Inkosi will need to obtain environmental authorisation from the Department of Mineral Resources (DMR). In support of this, Inkosi is required to submit a closure application in terms of Section 43(4) of the Mineral and Petroleum Resources Development Act (No. 28 of 2002) (MPRDA). In addition, the decommissioning of any activity requiring a closure certificate in terms of Section 43 of the MPRDA is an activity in Listing Notice 1 under the EIA Regulations, 2014 (as amended) and a basic assessment process in terms of the National

Environmental Management Act (No. 107 of 1998) (NEMA) is required. In this regard, the Environmental Impact Assessment Regulations being followed are Government Notice Regulation (GNR) 982 of 4 December 2014, as amended.

SLR Consulting (Africa) (Pty) Ltd (SLR), an independent firm of environmental consultants, has been appointed by Inkosi Mining (Pty) Ltd to manage the environmental assessment process.

The attached Background Information Document (BID) (in both English and Setswana) has been prepared to provide you with background information on the planned prospecting right closure and provide you with an opportunity to have input into the environmental assessment process.




Should you have any queries please contact SLR.

Thank you



Reinett Mogotshi

Junior Environmental Consultant

-  +27 11 467 0945
-  2032
-  rmogotshi@slrconsulting.com

SLR Consulting
SLR Consulting (Johannesburg office)
Suite1 - Building D, Monte Circle
178 Montecasino Boulevard
Fourways, Johannesburg, Gauteng, 2191






Confidentiality Notice and Disclaimer

This communication and any attachment(s) contain information which is confidential and may also be legally privileged. It is intended for the exclusive use of the recipient(s) to whom it is addressed. If you have received this communication in error, please email us by return mail and then delete the email from your system together with any copies of it. Any views or opinions are solely those of the author and do not represent those of SLR Management Ltd, or any of its subsidiaries, unless specifically stated.



Reinett Mogotshi

Junior Environmental Consultant

-  +27 11 467 0945
-  2032
-  rmogotshi@slrconsulting.com

SLR Consulting
SLR Consulting (Johannesburg office)
Suite1 - Building D, Monte Circle
178 Montecasino Boulevard
Fourways, Johannesburg, Gauteng, 2191



WINNERS: International Business
Excellence Award, 2016

Confidentiality Notice and Disclaimer

This communication and any attachment(s) contain information which is confidential and may also be legally privileged. It is intended for the exclusive use of the recipient(s) to whom it is addressed. If you have received this communication in error, please email us by return mail and then delete the email from your system together with any copies of it. Any views or opinions are solely those of the author and do not represent those of SLR Management Ltd, or any of its subsidiaries, unless specifically stated.

Natasha Higgitt

Heritage Officer: Archaeology, Palaeontology and Meteorites Unit

South African Heritage Resources Agency

- *A nation united through heritage* -

T: +27 21 462 4502/ 8660 | C:+27 82 507 0378 | F:+27 21 462 4509

E: nhiggitt@sahra.org.za | 111 Harrington Street | Cape Town |

www.sahra.org.za



INKOSI MINING (PTY) LTD

DATABASE FOR THE CLOSURE OF THE INKOSI GREATER PROSPECTING RIGHT

TABLE 1: PROJECT TEAM AND ENVIRONMENTAL ASSESSMENT TEAM	2
TABLE 2: LANDOWNERS, LAND USERS AND LAWFUL OCCUPIERS IN THE PROJECT AREA.....	3
TABLE 3: ADJACENT LANDOWNERS IN THE PROJECT AREA	7
TABLE 4: REGULATORY AUTHORITIES LIST	13

TABLE 1: PROJECT TEAM AND ENVIRONMENTAL ASSESSMENT TEAM

Interest Group	Title	Name	Surname	Organisation
Environmental Consultant	Ms	Caitlin	Hird	SLR Consulting (Pty) Ltd
	Ms	Reinett	Mogotshi	
	Ms	Alex	Pheiffer	
Client Team	Mr	Gerhard	Van Dyk	Impala Platinum Limited

TABLE 2: LANDOWNERS, LAND USERS AND LAWFUL OCCUPIERS IN THE PROJECT AREA

Organisation	Property	Portion number	Title Deed No.	Interest	Name and surname
Ngwanadirane Communal Prop Assoc	Hartebeestpoort B 410 Farm	605	T145130/2006	Landowner	Obakeng Lebetho
		606	T64860/2019		
		960	T145169/2006		
		962	T11918/2008		
		963	T145132/2006		
		971	T26930/2009		
		974	T127930/2007		
		975	T57501/2008		
		1111	T160749/2006		
		1114	T148337/2006		
		1115	T148337/2006		
		1116	T33287/2007		
		1185	T18434/2010		
Meintjeskroon Boerdery CC	Hartebeestpoort B 410 Farm	607	T76994/2017	Landowner	Magrietha Maria Catharina Naude Meintjes
		608	T41324/2018		
		968	T38109/2007		
		970	T93337/2002		
		972 RE	T76995/2017		
		977	T113562/1999		
		1139	T26933/2000		
		1142	T28481/2004		
D L A Inv S A Pty Ltd	Hartebeestpoort B 410 Farm	609	T122293/1997	Landowner	Greta Del Sal
		1152	T78992/1997		
		1153	T78992/1997		
Van Rensburg Familie Trust	Hartebeestpoort B 410 Farm	765	T61358/2013	Landowner	Jacobus Theodorus Janse van Rensburg
H F Barnard Familie Trust	Hartebeestpoort B 410 Farm	882	T52092/2003	Landowner	Adam Barnard
		1147	T52092/2003		
Private person	Hartebeestpoort B 410 Farm	961	T28004/2016	Landowner	Bruwer Hendrik Jacobus
Private person	Hartebeestpoort B 410 Farm	964 RE	T61183/2007	Landowner	Grimett Fredrika Johanna
		1132	T61183/2007		
Private person	Hartebeestpoort B 410 Farm	965	T23353/2014	Landowner	Bruwer Marthinus Nicolaas Kruger

Organisation	Property	Portion number	Title Deed No.	Interest	Name and surname
Gotsube Le Thothwe Communal Prop Assoc	Hartebeestpoort B 410 Farm	976	T144490/2006	Landowner	Francina Tlhapane
		1110	T160748/2006		
		1141	T171686/2007		
		1145	T148335/2006		
		1146	T13431/2009		
		1186	T125851/2006		
Lewood Inv Cc	Hartebeestpoort B 410 Farm	1059	T124922/2002	Landowner	
Eagle Valley PROP 52 CC	Hartebeestpoort B 410 Farm	1143	T142941/2004	Landowner	Tashnee
		1144	T35197/2009		
Private Person	Hartebeestpoort B 410 Farm	1149	T122828/2004	Landowner	Erasmus Willem Jakobus
Du Plessis Familie Trust	Hartebeestpoort B 410 Farm	1150	T81153/2009	Landowner	Neels Du Plessis
RED Graniti SA Pty Ltd	Hartebeestpoort B 410 Farm	1154	T25722/2003	Landowner	Patricia
Private Person	Hartebeestpoort B 410 Farm	1168	T70193/1995	Landowner	Fourie Louis Carel Andries
		1168	T70193/1995	Landowner	Fourie Dalene
Private Person	Hartebeestpoort B 410 Farm	1169	T32769/1979	Landowner	Van Der Westhuizen Philippus Rudolph
Private person	Hartebeestpoort B 410 Farm	1170	T168/2014	Landowner	Coetsee Hester Maria Elizabeth
			T95/2017		
		1171	T168/2014		
			T95/2017		
		1172	T168/2014		
			T95/2017		
		1173	T168/2014		
			T95/2017		
Kelgran Africal Pty Ltd	Hartebeestpoort B 410 Farm	1174	T19445/2002	Landowner	Mr. C. Mulder
		1175			
Eagle Granite Pty Ltd	Hartebeestpoort B 410 Farm	1176	T145716/2001	Landowner	Bridget
		1177	T145716/2001		
		1187	T74649/2004		
Private person	Hartebeestpoort B 410 Farm	1184	T90497/2006	Landowner	Janetha Hendrina Pretorius
Private person	Hartebeestpoort B 410 Farm	1188	T6558/2015	Landowner	Pogiso Patrick Shikwane
		1189	T17343/2016		

Organisation	Property	Portion number	Title Deed No.	Interest	Name and surname
Private person	Hartebeestpoort B 410 Farm	1191	T107608/2003	Landowner	Adriaan Jacobus Naude Vermaak
Private person	Hartebeestpoort B 410 Farm	1192	T41519/2010	Landowner	Durand Frederick Kolbe
Educational Manuals SA CC	Hartebeestpoort B 410 Farm	1193	T132921/2007	Landowner	Martha Louisa van Scheers
Private person	Hartebeestpoort B 410 Farm	1195	T43660/2019	Landowner	Hayes Aurther
Private person	Hartebeestpoort B 410 Farm	1196	T71159/2006	Landowner	Jan Heystek Du Plessis
		1197	T71159/2006		
Margarita Trust	Hartebeestpoort B 410 Farm	1198	T155605/2002	Landowner	Meintjes Magrietha Maria Catharina
Private person	Hartebeestpoort B 410 Farm	1199	T84072/1995	Landowner	Sebopa Phillip Oupa
			T84072/1995		Sebopa Lydia Grace
Private person	Hartebeestpoort B 410 Farm	1200	T89520/1998	Landowner	Breitenbach Beatrix Gezina Susanna
Private person	Hartebeestpoort B 410 Farm	1375	T63932/2014	Landowner	Maylene Elinore Keyser
Even Grand Trading 5 CC	Hartebeestpoort B 410 Farm	1376	T71192/2017	Landowner	SASOL
Private person	Hartebeestpoort B 410 Farm	1140 RE	T98910/2008	Landowner	Marius van Heerden
National Government of The Republic of South Africa	Hartebeestpoort B 410 Farm	RE?	T9863/1925BP	Landowner	Victor Tities
Golang Enterprises Trust	Hartebeestpoort B 410 Farm	1112	T82417/2003	Landowner	J.S Seema
Private person	Hartebeestpoort B 410 Farm	1113	T98214/2001	Landowner	Greeff Catharina Petronelle
Vollie & Annatjie Besigheidstrust	Hartebeestpoort B 410 Farm	1117	T28069/2015	Landowner	Venter de Jager
Magalies Sitrus Maatskappy Pty Ltd	Hartebeestpoort B 410 Farm	1148	T110307/1996	Landowner	

Organisation	Property	Portion number	Title Deed No.	Interest	Name and surname
Private person	Hartebeestpoort B 410 Farm	969	T158950/2002	Landowner	Bruwer Francis
NCMS Transport CC	Hartebeestpoort B 410 Farm	1194	T6019/2017	Landowner	Shaun Prinsloo
Eagle Granite Pty Ltd	Hartebeestpoort B 410 Farm	1177 RE	T145716/2001	Landowner	Bridget
		1176	T145717/2001		
Private person	Hartebeestpoort B 410 Farm	1174	T168/2014	Landowner	Coetzee Hester Maria Elizabeth
			T95/2017		
		1175	T168/2014		
Private person	Hartebeestpoort B 410 Farm	1169	T32769/1979	Landowner	Philippus Rudolph Van Der Westhuizen
Private person	Hartebeestpoort B 410 Farm	1168	T70193/1995	Landowner	Fourie Louis Carel Andries
Private person	Hartebeestpoort B 410 Farm	1167	T114090/1996	Landowner	Christiaan Nel
Private person	Hartebeestpoort B 410 Farm	1345	T42393/2008	Landowner	JEAN PIERRE ALEXANDER POTGIETER
	Hartebeestpoort B 410 Farm	43			
	Hartebeestpoort B 410 Farm	328			
	Hartebeestpoort B 410 Farm	1397			
	Hartebeestpoort B 410 Farm	973			

TABLE 3: ADJACENT LANDOWNERS IN THE PROJECT AREA

Organisation	Property	Portion number	Title Deed No.	Interest	Name and surname
Ngwanadirane Communal Prop Assoc	Hartebeestpoort B 410 Farm	939	T7755/2010	Landowner	Obakeng Lebetho
		939	T7755/2010		
		940	T38111/2007		
		942	T45152/2007		
		955	T160716/2006		
		956	T8994/2007		
		957	T160749/2006		
		958	T148337/2006		
		959	T33287/2007		
		966	T145170/2006		
		967	T32657/2008		
		1041	T145170/2006		
		1120	T108670/2007		
		1121	T145132/2006		
		1122	T145132/2006		
		1131	T98648/2007		
		1133	T102801/2008		
		1202	T117730/2007		
		1203	T93062/2007		
		1212	T46030/2007		
1213	T46030/2007				
1223	T46030/2007				
1351	T38109/2007				
1352	T38109/2007				
1039	T84053/2010				
1109	T8994/2007				
D L A Inv S A Pty Ltd	Hartebeestpoort B 410 Farm	1151	T78992/1997	Landowner	Greta Del Sal
		1415	T91476/2013		
H J L Hills Boerdery Pty Ltd	Hartebeestpoort B 410 Farm	714	T79123/2009	Landowner	Hendrik Johannes Lambertus Hills
		715	T13670/2018		
		716	T21048/2012		
		717	T21547/2012		
		761	T79123/2009		
1374	T79123/2009				

Organisation	Property	Portion number	Title Deed No.	Interest	Name and surname
Private person	Hartebeestpoort B 410 Farm	718	T66011/2011	Landowner	Sarel Johannes Lodewickes Marais
Van Rensburg Familie Trust	Hartebeestpoort B 410 Farm	719	T51331/2009	Landowner	Jacobus Theodorus Janse van Rensburg
		746	T19344/2012		
		747	T51331/2009		
		749	T53678/1980		
		763	T118433/2008		
		764	T169431/2007		
		766	T154033/2003		
		1046	T53678/1980		
		1219	T4617/2011		
Ernstcor Granite Mining Inv CC	Hartebeestpoort B 410 Farm	762	T31822/2002	Landowner	Lourens
Private person	Hartebeestpoort B 410 Farm	884	T26597/2013	Landowner	Matshidiso David Raphadu
Private person	Hartebeestpoort B 410 Farm	1119	T28004/2016	Landowner	Bruwer Hendrik Jacobus
Rand Swallows Pty Ltd	Hartebeestpoort B 410 Farm	994	T13776/2014	Landowner	
Gotsube Le Thothwe Communal Prop Assoc	Hartebeestpoort B 410 Farm	883	T6342/2008	Landowner	Francina Tlhapane
Private person	Hartebeestpoort B 410 Farm	977	T25694/1962	Landowner	Meintjes Magrietha Maria Catharina
			T113562/1999		
Private person	Hartebeestpoort B 410 Farm	1118	T146381/2003	Landowner	Paul Bertus Scholtz
Evertrade 76 Pty Ltd	Hartebeestpoort B 410 Farm	1124	T138837/2003	Landowner	
Prospertech Inv Pty Ltd	Hartebeestpoort B 410 Farm	1125	T59004/2004	Landowner	
Lenong Mining Inv Pty Ltd	Hartebeestpoort B 410 Farm	1126	T15471/2003	Landowner	Lourens
Private person	Hartebeestpoort B 410 Farm	1134	T113416/2002	Landowner	Charles Samuel Eglington
Private person	Hartebeestpoort B 410 Farm	1137 RE	T43929/2016	Landowner	John Henry Deale

Organisation	Property	Portion number	Title Deed No.	Interest	Name and surname
Private person	Hartebeestpoort B 410 Farm	1139	T66426/2017	Landowner	Malesa Motswapo Hezekiel Papkie
Magalies Sitrus Maatskappy Pty Ltd	Hartebeestpoort B 410 Farm	1387	T142230/2005	Landowner	
		1155	T25722/2003		
Private person	Hartebeestpoort B 410 Farm	1034	T168/2014	Landowner	Coetzee Hester Maria Elizabeth
		1035	T168/2014		
		1174	T168/2014		
			T95/2017		
		1175	T168/2014		
			T95/2017		
		1033	T168/2014		
		1036	T168/2014		
		1037	T168/2014		
1038	T168/2014				
Eagle Granite Pty Ltd	Hartebeestpoort B 410 Farm	1123	T13150/2012	Landowner	Bridget
		1178	T145715/2001		
		1180	T7950/2002		
		1181	T146000/2000		
		1182	T99558/2000		
		1183	T140643/2001		
Marikana Granite Quarries Pty Ltd	Hartebeestpoort B 410 Farm	1373	T120649/2003	Landowner	
Private person	Hartebeestpoort B 410 Farm	1191	T107608/2003	Landowner	Vermaak Adriaan Jacobus Naude
Private person	Hartebeestpoort B 410 Farm	1206	T94564/2002	Landowner	Paul Jacobus Jacobs
In2quantum Pty Ltd	Hartebeestpoort B 410 Farm	1208	T70253/2014	Landowner	
Phepeng Granite Pty Ltd	Hartebeestpoort B 410 Farm	1222	T13988/2003	Landowner	
Private person	Hartebeestpoort B 410 Farm	1204	T118695/2004	Landowner	Abram Isak Finberg
		1346	T7075/2003		
Private person	Hartebeestpoort B 410 Farm	1380	T59130/2006	Landowner	Jan Dirkse Gertenbach
Private person	Hartebeestpoort B 410 Farm	1030	T59378/2017	Landowner	Mahuma Keabaka Percival

Organisation	Property	Portion number	Title Deed No.	Interest	Name and surname
Private person	Hartebeestpoort B 410 Farm	1031	T31292/2014	Landowner	Donavan Marthinus Gerhardus Young
Private person	Hartebeestpoort B 410 Farm	1032	T24382/1976	Landowner	Van Der Westhuizen Philippus Rudolph
Apostoliese Geloof Sending van Suid-Afrika	Hartebeestpoort B 410 Farm	602	T156747/2006	Landowner	
Nederduitse Gereformeerde Kerk Van Transvaal-Vorentoe	Hartebeestpoort B 410 Farm	601	G217/953	Landowner	
Private person	Hartebeestpoort B 410 Farm	1201	T40201/1990	Landowner	Van Dyk Christina Cornelia
Private person	Hartebeestpoort B 410 Farm	1207	T31/1997	Landowner	Labuschagne Johannes Jacobus
Wucor Granite Mining Inv Pty Ltd	Hartebeestpoort B 410 Farm	1179	T6490/2000	Landowner	
RED Graniti SA Pty Ltd	Hartebeestpoort B 410 Farm	1161	T25722/2003	Landowner	Patricia
Private person	Hartebeestpoort B 410 Farm	1138	T169171/2006	Landowner	Tabane Masentle
Private person	Hartebeestpoort B 410 Farm	1129	T58919/1990	Landowner	Van Der Merwe Nicolaas Johannes
Private person	Hartebeestpoort B 410 Farm	1128	T58922/1990	Landowner	Bosch Andre
Private person	Hartebeestpoort B 410 Farm	1127	T58920/1990	Landowner	Joubert Francios Jacobus
	Hartebeestpoort B 410 Farm	1221			
	Hartebeestpoort B 410 Farm	43			
	Hartebeestpoort B 410 Farm	328			
	Hartebeestpoort B 410 Farm	1397			

Organisation	Property	Portion number	Title Deed No.	Interest	Name and surname
	Hartebeestpoort B 410 Farm	1040			
	Hartebeestpoort B 410 Farm	325			
	Hartebeestpoort B 410 Farm	15			
Private person	Uitvalgrond 416 JQ	07	T90655/2005	Landowner	Barend Johannes Coetzee
Private person	Uitvalgrond 416 JQ	46 RE	T57208/1993	Landowner	Catherina Elizabeth Van Zyl
Jan Van Rensburg Familie Trust	Uitvalgrond 416 JQ	08 RE	T88571/2012	Landowner	Jacobus Theodorus Janse van Rensburg
Private person	Uitvalgrond 416 JQ	10 RE	T42922/2009	Landowner	Jan Frederik Janse Van Rensburg
Private person	Uitvalgrond 416 JQ	14	T99411/2001	Landowner	Christiaan Dawid Roos
Private person	Uitvalgrond 416 JQ	15 RE	T157/1979	Landowner	Cornelius Roos
Private person	Uitvalgrond 416 JQ	01 RE	T20188/1947	Landowner	Izak Johannes Meyer
Private person	Roodekopjes 417 JQ	232 RE 133 RE	T150024/2004 T677/2005	Landowner	Christian George Stander Visser
Private person	Roodekopjes 417 JQ	254 RE	T44863/2017	Landowner	Hendrik Petrus Rossouw
Jan Van Rensburg Familie Trust	Roodekopjes 417 JQ	235 RE	T97296/2017	Landowner	Jacobus Theodorus Janse van Rensburg
D M R Vleis CC	Roodekopjes 417 JQ	262 RE	T70570/2008	Landowner	
(Republic of Bophuthatswana C/o Royal Bafokeng Nation)	Kareepoort 407 JQ	01	T74/1980BP	Landowner	Reotshepile Tlhabane Adv. Ken Mokate
National Government of The Republic of South Africa	Kareepoort 407 JQ	06	T9863/1925BP	Landowner	Victor Tities

Organisation	Property	Portion number	Title Deed No.	Interest	Name and surname
Transnet SOC Ltd	Kareepoort 407 JQ	03	T3931/1915	Landowner	Suzan Aidelomo

TABLE 4: REGULATORY AUTHORITIES LIST

NAME	SURNAME	ORGANISATION
Christopher	Tshisevhe	Department of Mineral Resources (DMR)
Desmond	Makamu	
Phumudzo	Nethwadzi	
Eva	Mahlangu	Department of Rural Environment and Agricultural Development
Motshabi	Mohlalisi	DEDECT- Environmental Officer
Lungiswa	Nonkomo	DEDECT- Compliance and Enforcement Officer Rustenburg
Lethabo	Ramashala	Department of Water and Sanitation
Sebenzile	Ntshangase	
Portia	Krisjan	Department of Agriculture, Forestry and Fisheries
Matshidiso	Collins	Department of Rural Development and Land Reform Project Co-ordinator: Bojanala District (Restitution)
Phuti	Mahloko	North West Parks and Tourism Board
Natasha	Higgitt	South African Heritage Resources Agency
Dolly	Mogonediswa	PA to the Chief Director-Department of Public Works and Roads
Katlego	Mogale	Department of Public Works and Roads
Johan	Van Wyk	
Kelebogile	Mekgoe	Rustenburg Local Municipality: Environmental Management

NAME	SURNAME	ORGANISATION
James	Mesebe	Bojanala District Municipality
Ashmar	Khuduga	Municipal Manager – Bojanala District Municipality
Amanda	Bubu	Bojanala District Municipality
Keabetswe	Mothupi	Department of Rural Development and Land Reform: Land Claims
Cllr Mosielele		Cllr Ward 40 Madibeng Local Municipality
Cllr Samuel Dimakatso	Mafoko	Cllr Ward 29 Rustenburg Local Municipality

TABLE 5: INTERESTED AND AFFECTED PARTIES

NAME	SURNAME	ORGANISATION
Lynette and Willem	Deneer	
Joseph	Mongau	Mongau Construction