

APPENDIX E: DFFE SCREENING TOOL

**SCREENING REPORT FOR AN ENVIRONMENTAL AUTHORIZATION AS
REQUIRED BY THE 2014 EIA REGULATIONS – PROPOSED SITE
ENVIRONMENTAL SENSITIVITY**

EIA Reference number: TBC

Project name: Marula Vent Shaft

Project title: Marula Vent Shaft Project

Date screening report generated: 01/10/2021 11:42:01

Applicant: SLR

Compiler: SLR

Compiler signature:

.....

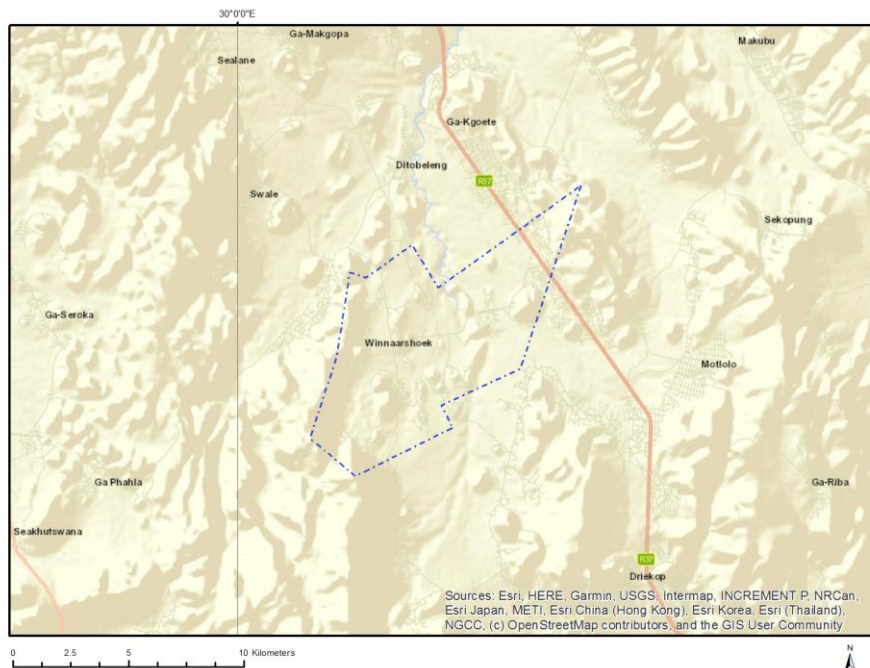
Application Category: Mining|Mining Right

OFFICIAL

Table of Contents

Proposed Project Location	3
Orientation map 1: General location	3
Map of proposed site and relevant area(s)	4
Cadastral details of the proposed site	4
Wind and Solar developments with an approved Environmental Authorisation or applications under consideration within 30 km of the proposed area	10
Environmental Management Frameworks relevant to the application	10
Environmental screening results and assessment outcomes	11
Relevant development incentives, restrictions, exclusions or prohibitions	11
Map indicating proposed development footprint within applicable development incentive, restriction, exclusion or prohibition zones	12
Proposed Development Area Environmental Sensitivity	12
Specialist assessments identified	13
Results of the environmental sensitivity of the proposed area	15
MAP OF RELATIVE AGRICULTURE THEME SENSITIVITY	15
MAP OF RELATIVE ANIMAL SPECIES THEME SENSITIVITY	16
MAP OF RELATIVE AQUATIC BIODIVERSITY THEME SENSITIVITY	17
MAP OF RELATIVE ARCHAEOLOGICAL AND CULTURAL HERITAGE THEME SENSITIVITY	18
MAP OF RELATIVE CIVIL AVIATION THEME SENSITIVITY	19
MAP OF RELATIVE DEFENCE THEME SENSITIVITY	20
MAP OF RELATIVE PALEONTOLOGY THEME SENSITIVITY	21
MAP OF RELATIVE PLANT SPECIES THEME SENSITIVITY	22
MAP OF RELATIVE TERRESTRIAL BIODIVERSITY THEME SENSITIVITY	23

Map of proposed site and relevant area(s)



Cadastral details of the proposed site

Property details:

No	Farm Name	Farm/ Erf No	Portion	Latitude	Longitude	Property Type
1	SEUWE VILLAGE	15	0	24°30'24.28S	30°3'21.04E	Erven
2	SEUWE VILLAGE	24	0	24°30'23.33S	30°3'17.9E	Erven
3	SEUWE VILLAGE	31	0	24°30'25.82S	30°3'18.85E	Erven
4	SEUWE VILLAGE	49	0	24°30'27.01S	30°3'15.98E	Erven
5	SEUWE VILLAGE	51	0	24°30'27.82S	30°3'17.24E	Erven
6	SEUWE VILLAGE	65	0	24°30'27.28S	30°3'11.81E	Erven
7	SEUWE VILLAGE	71	0	24°30'29.92S	30°3'15.62E	Erven
8	SEUWE VILLAGE	72	0	24°30'30.34S	30°3'16.23E	Erven
9	SEUWE VILLAGE	85	0	24°30'31.06S	30°3'12.76E	Erven
10	SEUWE VILLAGE	88	0	24°30'32.29S	30°3'14.71E	Erven
11	SEUWE VILLAGE	103	0	24°30'32.21S	30°3'9.82E	Erven
12	SEUWE VILLAGE	109	0	24°30'34.76S	30°3'13.68E	Erven
13	SEUWE VILLAGE	110	0	24°30'35.2S	30°3'14.36E	Erven
14	SEUWE VILLAGE	2	0	24°30'21.32S	30°3'21.38E	Erven
15	SEUWE VILLAGE	5	0	24°30'23S	30°3'22.13E	Erven
16	SEUWE VILLAGE	9	0	24°30'21.31S	30°3'19.54E	Erven
17	SEUWE VILLAGE	13	0	24°30'23.45S	30°3'19.81E	Erven
18	SEUWE VILLAGE	17	0	24°30'25.13S	30°3'22.33E	Erven
19	SEUWE VILLAGE	22	0	24°30'24.14S	30°3'19.24E	Erven
20	SEUWE VILLAGE	26	0	24°30'23.63S	30°3'15.71E	Erven
21	SEUWE VILLAGE	28	0	24°30'24.55S	30°3'16.92E	Erven
22	SEUWE VILLAGE	33	0	24°30'26.67S	30°3'20.11E	Erven
23	SEUWE VILLAGE	39	0	24°30'26.17S	30°3'17.61E	Erven
24	SEUWE VILLAGE	48	0	24°30'26.52S	30°3'15.36E	Erven
25	SEUWE VILLAGE	52	0	24°30'28.23S	30°3'17.86E	Erven
26	SEUWE VILLAGE	55	0	24°30'29.88S	30°3'18.54E	Erven
27	SEUWE VILLAGE	61	0	24°30'27.35S	30°3'14.7E	Erven

28	SEUWE VILLAGE	66	0	24°30'27.77S	30°3'12.41E	Erven
29	SEUWE VILLAGE	76	0	24°30'29.81S	30°3'13.76E	Erven
30	SEUWE VILLAGE	7	0	24°30'22.14S	30°3'20.79E	Erven
31	SEUWE VILLAGE	10	0	24°30'22.18S	30°3'17.99E	Erven
32	SEUWE VILLAGE	44	0	24°30'24S	30°3'14.41E	Erven
33	SEUWE VILLAGE	46	0	24°30'25.72S	30°3'14.05E	Erven
34	SEUWE VILLAGE	60	0	24°30'27.74S	30°3'15.32E	Erven
35	SEUWE VILLAGE	77	0	24°30'29.34S	30°3'13.04E	Erven
36	SEUWE VILLAGE	80	0	24°30'28.06S	30°3'11.19E	Erven
37	SEUWE VILLAGE	84	0	24°30'30.64S	30°3'12.03E	Erven
38	SEUWE VILLAGE	86	0	24°30'31.47S	30°3'13.39E	Erven
39	SEUWE VILLAGE	87	0	24°30'31.87S	30°3'14.05E	Erven
40	SEUWE VILLAGE	102	0	24°30'31.78S	30°3'9.19E	Erven
41	SEUWE VILLAGE	113	0	24°30'35.16S	30°3'12.43E	Erven
42	SEUWE VILLAGE	117	0	24°30'33.41S	30°3'9.84E	Erven
43	SEUWE VILLAGE	120	0	24°30'32.05S	30°3'8.02E	Erven
44	SEUWE VILLAGE	122	0	24°30'33.77S	30°3'7.65E	Erven
45	SEUWE VILLAGE	16	0	24°30'24.73S	30°3'21.65E	Erven
46	SEUWE VILLAGE	27	0	24°30'24.09S	30°3'16.33E	Erven
47	SEUWE VILLAGE	29	0	24°30'24.96S	30°3'17.58E	Erven
48	SEUWE VILLAGE	34	0	24°30'27.1S	30°3'20.68E	Erven
49	SEUWE VILLAGE	43	0	24°30'24.49S	30°3'15.03E	Erven
50	SEUWE VILLAGE	47	0	24°30'26.11S	30°3'14.73E	Erven
51	SEUWE VILLAGE	53	0	24°30'28.67S	30°3'18.43E	Erven
52	SEUWE VILLAGE	57	0	24°30'29S	30°3'17.31E	Erven
53	SEUWE VILLAGE	58	0	24°30'28.6S	30°3'16.68E	Erven
54	SEUWE VILLAGE	59	0	24°30'28.16S	30°3'16E	Erven
55	SEUWE VILLAGE	69	0	24°30'29.03S	30°3'14.33E	Erven
56	SEUWE VILLAGE	82	0	24°30'29.75S	30°3'10.82E	Erven
57	SEUWE VILLAGE	91	0	24°30'33.93S	30°3'15.24E	Erven
58	SEUWE VILLAGE	94	0	24°30'32.68S	30°3'13.33E	Erven
59	SEUWE VILLAGE	95	0	24°30'32.27S	30°3'12.71E	Erven
60	SEUWE VILLAGE	96	0	24°30'31.82S	30°3'12.01E	Erven
61	SEUWE VILLAGE	97	0	24°30'31.37S	30°3'11.48E	Erven
62	SEUWE VILLAGE	111	0	24°30'35.93S	30°3'13.7E	Erven
63	SEUWE VILLAGE	112	0	24°30'35.54S	30°3'13.02E	Erven
64	SEUWE VILLAGE	124	0	24°30'34.58S	30°3'8.96E	Erven
65	SEUWE VILLAGE	4	0	24°30'22.19S	30°3'22.8E	Erven
66	SEUWE VILLAGE	8	0	24°30'21.73S	30°3'20.14E	Erven
67	SEUWE VILLAGE	23	0	24°30'23.7S	30°3'18.58E	Erven
68	SEUWE VILLAGE	25	0	24°30'22.89S	30°3'17.35E	Erven
69	SEUWE VILLAGE	30	0	24°30'25.39S	30°3'18.15E	Erven
70	SEUWE VILLAGE	37	0	24°30'27.02S	30°3'18.85E	Erven
71	SEUWE VILLAGE	38	0	24°30'26.62S	30°3'18.26E	Erven
72	SEUWE VILLAGE	54	0	24°30'29.15S	30°3'19.09E	Erven
73	SEUWE VILLAGE	70	0	24°30'29.47S	30°3'14.93E	Erven
74	SEUWE VILLAGE	73	0	24°30'31.03S	30°3'15.67E	Erven
75	SEUWE VILLAGE	93	0	24°30'33.1S	30°3'14.01E	Erven
76	SEUWE VILLAGE	114	0	24°30'34.68S	30°3'11.77E	Erven
77	SEUWE VILLAGE	119	0	24°30'32.53S	30°3'8.64E	Erven
78	SEUWE VILLAGE	136	0	24°30'35.79S	30°3'8.97E	Erven
79	SEUWE VILLAGE	1	0	24°30'20.93S	30°3'20.87E	Erven
80	SEUWE VILLAGE	3	0	24°30'21.76S	30°3'22.09E	Erven
81	SEUWE VILLAGE	14	0	24°30'23.87S	30°3'20.45E	Erven
82	SEUWE VILLAGE	36	0	24°30'27.44S	30°3'19.49E	Erven
83	SEUWE VILLAGE	41	0	24°30'25.26S	30°3'16.28E	Erven
84	SEUWE VILLAGE	42	0	24°30'24.89S	30°3'15.65E	Erven
85	SEUWE VILLAGE	56	0	24°30'29.46S	30°3'17.93E	Erven
86	SEUWE VILLAGE	62	0	24°30'26.93S	30°3'14.06E	Erven
87	SEUWE VILLAGE	63	0	24°30'26.51S	30°3'13.45E	Erven

88	SEUWE VILLAGE	68	0	24°30'28.61S	30°3'13.73E	Erven
89	SEUWE VILLAGE	74	0	24°30'30.63S	30°3'15.03E	Erven
90	SEUWE VILLAGE	75	0	24°30'30.23S	30°3'14.4E	Erven
91	SEUWE VILLAGE	89	0	24°30'32.69S	30°3'15.3E	Erven
92	SEUWE VILLAGE	92	0	24°30'33.49S	30°3'14.66E	Erven
93	SEUWE VILLAGE	6	0	24°30'22.62S	30°3'21.48E	Erven
94	SEUWE VILLAGE	11	0	24°30'22.52S	30°3'18.58E	Erven
95	SEUWE VILLAGE	12	0	24°30'23S	30°3'19.21E	Erven
96	SEUWE VILLAGE	18	0	24°30'25.82S	30°3'21.78E	Erven
97	SEUWE VILLAGE	19	0	24°30'25.45S	30°3'21.06E	Erven
98	SEUWE VILLAGE	32	0	24°30'26.27S	30°3'19.53E	Erven
99	SEUWE VILLAGE	40	0	24°30'25.7S	30°3'16.95E	Erven
100	SEUWE VILLAGE	45	0	24°30'25.28S	30°3'13.46E	Erven
101	SEUWE VILLAGE	50	0	24°30'27.44S	30°3'16.61E	Erven
102	SEUWE VILLAGE	64	0	24°30'26.07S	30°3'12.84E	Erven
103	SEUWE VILLAGE	67	0	24°30'28.21S	30°3'13.07E	Erven
104	SEUWE VILLAGE	98	0	24°30'30.98S	30°3'10.91E	Erven
105	SEUWE VILLAGE	108	0	24°30'34.33S	30°3'12.96E	Erven
106	SEUWE VILLAGE	123	0	24°30'34.18S	30°3'8.35E	Erven
107	SEUWE VILLAGE	130	0	24°30'37.17S	30°3'12.67E	Erven
108	SEUWE VILLAGE	20	0	24°30'25.02S	30°3'20.46E	Erven
109	SEUWE VILLAGE	21	0	24°30'24.59S	30°3'19.81E	Erven
110	SEUWE VILLAGE	35	0	24°30'27.84S	30°3'20.11E	Erven
111	SEUWE VILLAGE	78	0	24°30'28.91S	30°3'12.4E	Erven
112	SEUWE VILLAGE	83	0	24°30'30.23S	30°3'11.48E	Erven
113	SEUWE VILLAGE	121	0	24°30'33.41S	30°3'6.92E	Erven
114	SEUWE VILLAGE	129	0	24°30'36.69S	30°3'12.01E	Erven
115	SEUWE VILLAGE	135	0	24°30'36.22S	30°3'9.6E	Erven
116	SEUWE VILLAGE	79	0	24°30'28.49S	30°3'11.81E	Erven
117	SEUWE VILLAGE	81	0	24°30'29.35S	30°3'10.24E	Erven
118	SEUWE VILLAGE	90	0	24°30'33.12S	30°3'15.9E	Erven
119	SEUWE VILLAGE	105	0	24°30'33.12S	30°3'11.13E	Erven
120	SEUWE VILLAGE	106	0	24°30'33.52S	30°3'11.68E	Erven
121	SEUWE VILLAGE	115	0	24°30'34.23S	30°3'11.18E	Erven
122	SEUWE VILLAGE	116	0	24°30'33.82S	30°3'10.49E	Erven
123	SEUWE VILLAGE	118	0	24°30'32.97S	30°3'9.24E	Erven
124	SEUWE VILLAGE	126	0	24°30'35.51S	30°3'10.11E	Erven
125	SEUWE VILLAGE	128	0	24°30'36.29S	30°3'11.35E	Erven
126	SEUWE VILLAGE	142	0	24°30'40.88S	30°3'13.62E	Erven
127	SEUWE VILLAGE	147	0	24°30'39.76S	30°3'14.72E	Erven
128	SEUWE VILLAGE	155	0	24°30'40.28S	30°3'17.46E	Erven
129	SEUWE VILLAGE	159	0	24°30'38.45S	30°3'14.61E	Erven
130	SEUWE VILLAGE	125	0	24°30'35S	30°3'9.54E	Erven
131	SEUWE VILLAGE	131	0	24°30'37.89S	30°3'12.14E	Erven
132	SEUWE VILLAGE	139	0	24°30'34.46S	30°3'6.86E	Erven
133	SEUWE VILLAGE	148	0	24°30'40.22S	30°3'15.33E	Erven
134	SEUWE VILLAGE	149	0	24°30'40.73S	30°3'16.02E	Erven
135	SEUWE VILLAGE	150	0	24°30'41.16S	30°3'16.76E	Erven
136	SEUWE VILLAGE	151	0	24°30'41.6S	30°3'17.53E	Erven
137	SEUWE VILLAGE	172	0	24°30'39.36S	30°3'20.68E	Erven
138	SEUWE VILLAGE	177	0	24°30'37.29S	30°3'17.49E	Erven
139	SEUWE VILLAGE	184	0	24°30'36.06S	30°3'18.48E	Erven
140	SEUWE VILLAGE	193	0	24°30'36.93S	30°3'21.62E	Erven
141	SEUWE VILLAGE	197	0	24°30'35.27S	30°3'19.04E	Erven
142	SEUWE VILLAGE	202	0	24°30'33.17S	30°3'18.85E	Erven
143	SEUWE VILLAGE	217	0	24°30'33.26S	30°3'20.81E	Erven
144	SEUWE VILLAGE	222	0	24°30'31.19S	30°3'20.36E	Erven
145	SEUWE VILLAGE	127	0	24°30'35.93S	30°3'10.72E	Erven
146	SEUWE VILLAGE	140	0	24°30'40.1S	30°3'12.38E	Erven
147	SEUWE VILLAGE	166	0	24°30'38.95S	30°3'18.08E	Erven

148	SEUWE VILLAGE	168	0	24°30'39.81S	30°3'19.31E	Erven
149	SEUWE VILLAGE	176	0	24°30'37.73S	30°3'18.11E	Erven
150	SEUWE VILLAGE	183	0	24°30'35.62S	30°3'17.82E	Erven
151	SEUWE VILLAGE	187	0	24°30'37.33S	30°3'20.32E	Erven
152	SEUWE VILLAGE	189	0	24°30'38.21S	30°3'21.62E	Erven
153	SEUWE VILLAGE	191	0	24°30'37.8S	30°3'22.86E	Erven
154	SEUWE VILLAGE	195	0	24°30'36.19S	30°3'20.32E	Erven
155	SEUWE VILLAGE	209	0	24°30'36.2S	30°3'23.27E	Erven
156	SEUWE VILLAGE	132	0	24°30'37.52S	30°3'11.42E	Erven
157	SEUWE VILLAGE	141	0	24°30'40.44S	30°3'12.96E	Erven
158	SEUWE VILLAGE	144	0	24°30'41.72S	30°3'14.84E	Erven
159	SEUWE VILLAGE	146	0	24°30'39.28S	30°3'13.94E	Erven
160	SEUWE VILLAGE	153	0	24°30'41.67S	30°3'19.51E	Erven
161	SEUWE VILLAGE	154	0	24°30'40.87S	30°3'18.32E	Erven
162	SEUWE VILLAGE	163	0	24°30'37.68S	30°3'16.2E	Erven
163	SEUWE VILLAGE	167	0	24°30'39.39S	30°3'18.69E	Erven
164	SEUWE VILLAGE	170	0	24°30'40.65S	30°3'20.62E	Erven
165	SEUWE VILLAGE	173	0	24°30'38.93S	30°3'20.03E	Erven
166	SEUWE VILLAGE	198	0	24°30'34.87S	30°3'18.42E	Erven
167	SEUWE VILLAGE	229	0	24°30'34.17S	30°3'24.8E	Erven
168	SEUWE VILLAGE	233	0	24°30'32.92S	30°3'24.9E	Erven
169	SEUWE VILLAGE	242	0	24°30'29.2S	30°3'22.03E	Erven
170	SEUWE VILLAGE	260	0	24°30'27.9S	30°3'22.05E	Erven
171	SEUWE VILLAGE	285	0	24°30'26.58S	30°3'27.42E	Erven
172	SEUWE VILLAGE	137	0	24°30'35.35S	30°3'8.33E	Erven
173	SEUWE VILLAGE	157	0	24°30'39.43S	30°3'16.02E	Erven
174	SEUWE VILLAGE	162	0	24°30'37.26S	30°3'15.54E	Erven
175	SEUWE VILLAGE	171	0	24°30'39.84S	30°3'21.29E	Erven
176	SEUWE VILLAGE	175	0	24°30'38.14S	30°3'18.74E	Erven
177	SEUWE VILLAGE	178	0	24°30'36.86S	30°3'16.88E	Erven
178	SEUWE VILLAGE	180	0	24°30'36.01S	30°3'15.57E	Erven
179	SEUWE VILLAGE	188	0	24°30'37.79S	30°3'20.92E	Erven
180	SEUWE VILLAGE	190	0	24°30'38.63S	30°3'22.31E	Erven
181	SEUWE VILLAGE	200	0	24°30'33.96S	30°3'17.25E	Erven
182	SEUWE VILLAGE	203	0	24°30'33.63S	30°3'19.53E	Erven
183	SEUWE VILLAGE	210	0	24°30'36.64S	30°3'23.98E	Erven
184	SEUWE VILLAGE	213	0	24°30'34.86S	30°3'23.27E	Erven
185	SEUWE VILLAGE	218	0	24°30'32.84S	30°3'20.19E	Erven
186	SEUWE VILLAGE	220	0	24°30'31.96S	30°3'18.85E	Erven
187	SEUWE VILLAGE	223	0	24°30'31.61S	30°3'21.01E	Erven
188	SEUWE VILLAGE	224	0	24°30'32.08S	30°3'21.63E	Erven
189	SEUWE VILLAGE	226	0	24°30'32.9S	30°3'22.9E	Erven
190	SEUWE VILLAGE	133	0	24°30'37.07S	30°3'10.7E	Erven
191	SEUWE VILLAGE	134	0	24°30'36.64S	30°3'10.15E	Erven
192	SEUWE VILLAGE	138	0	24°30'34.97S	30°3'7.67E	Erven
193	SEUWE VILLAGE	158	0	24°30'38.97S	30°3'15.32E	Erven
194	SEUWE VILLAGE	160	0	24°30'37.95S	30°3'13.91E	Erven
195	SEUWE VILLAGE	165	0	24°30'38.54S	30°3'17.46E	Erven
196	SEUWE VILLAGE	169	0	24°30'40.24S	30°3'19.94E	Erven
197	SEUWE VILLAGE	174	0	24°30'38.52S	30°3'19.37E	Erven
198	SEUWE VILLAGE	185	0	24°30'36.57S	30°3'19.13E	Erven
199	SEUWE VILLAGE	196	0	24°30'35.75S	30°3'19.64E	Erven
200	SEUWE VILLAGE	206	0	24°30'34.93S	30°3'21.32E	Erven
201	SEUWE VILLAGE	208	0	24°30'35.78S	30°3'22.63E	Erven
202	SEUWE VILLAGE	214	0	24°30'34.48S	30°3'22.6E	Erven
203	SEUWE VILLAGE	215	0	24°30'34.09S	30°3'22E	Erven
204	SEUWE VILLAGE	221	0	24°30'30.82S	30°3'19.72E	Erven
205	SEUWE VILLAGE	235	0	24°30'32.09S	30°3'23.59E	Erven
206	SEUWE VILLAGE	152	0	24°30'41.69S	30°3'18.45E	Erven
207	SEUWE VILLAGE	164	0	24°30'38.14S	30°3'16.83E	Erven

208	SEUWE VILLAGE	186	0	24°30'36.96S	30°3'19.71E	Erven
209	SEUWE VILLAGE	194	0	24°30'36.58S	30°3'21.02E	Erven
210	SEUWE VILLAGE	204	0	24°30'34.04S	30°3'20.06E	Erven
211	SEUWE VILLAGE	205	0	24°30'34.48S	30°3'20.65E	Erven
212	SEUWE VILLAGE	216	0	24°30'33.69S	30°3'21.41E	Erven
213	SEUWE VILLAGE	240	0	24°30'29.95S	30°3'20.36E	Erven
214	SEUWE VILLAGE	245	0	24°30'30.48S	30°3'23.87E	Erven
215	SEUWE VILLAGE	249	0	24°30'32.11S	30°3'26.38E	Erven
216	SEUWE VILLAGE	274	0	24°30'28.52S	30°3'27.55E	Erven
217	SEUWE VILLAGE	280	0	24°30'25.88S	30°3'23.69E	Erven
218	SEUWE VILLAGE	99	0	24°30'30.55S	30°3'10.26E	Erven
219	SEUWE VILLAGE	100	0	24°30'30.11S	30°3'9.59E	Erven
220	SEUWE VILLAGE	101	0	24°30'31.36S	30°3'8.63E	Erven
221	SEUWE VILLAGE	104	0	24°30'32.64S	30°3'10.45E	Erven
222	SEUWE VILLAGE	107	0	24°30'33.91S	30°3'12.25E	Erven
223	SEUWE VILLAGE	143	0	24°30'41.32S	30°3'14.18E	Erven
224	SEUWE VILLAGE	145	0	24°30'38.83S	30°3'13.35E	Erven
225	SEUWE VILLAGE	156	0	24°30'39.85S	30°3'16.68E	Erven
226	SEUWE VILLAGE	161	0	24°30'36.8S	30°3'14.9E	Erven
227	SEUWE VILLAGE	179	0	24°30'36.43S	30°3'16.23E	Erven
228	SEUWE VILLAGE	182	0	24°30'35.23S	30°3'17.18E	Erven
229	SEUWE VILLAGE	192	0	24°30'37.37S	30°3'22.29E	Erven
230	SEUWE VILLAGE	199	0	24°30'34.42S	30°3'17.85E	Erven
231	SEUWE VILLAGE	207	0	24°30'35.32S	30°3'21.94E	Erven
232	SEUWE VILLAGE	212	0	24°30'35.36S	30°3'23.91E	Erven
233	SEUWE VILLAGE	181	0	24°30'34.85S	30°3'16.54E	Erven
234	SEUWE VILLAGE	201	0	24°30'32.76S	30°3'18.16E	Erven
235	SEUWE VILLAGE	211	0	24°30'35.79S	30°3'24.56E	Erven
236	SEUWE VILLAGE	227	0	24°30'33.27S	30°3'23.51E	Erven
237	SEUWE VILLAGE	228	0	24°30'33.73S	30°3'24.16E	Erven
238	SEUWE VILLAGE	231	0	24°30'33.76S	30°3'26.16E	Erven
239	SEUWE VILLAGE	254	0	24°30'30.4S	30°3'25.85E	Erven
240	SEUWE VILLAGE	256	0	24°30'29.6S	30°3'24.63E	Erven
241	SEUWE VILLAGE	257	0	24°30'29.16S	30°3'23.96E	Erven
242	SEUWE VILLAGE	266	0	24°30'28.86S	30°3'26.15E	Erven
243	SEUWE VILLAGE	281	0	24°30'24.76S	30°3'24.64E	Erven
244	SEUWE VILLAGE	288	0	24°30'27.93S	30°3'29.41E	Erven
245	SEUWE VILLAGE	232	0	24°30'33.34S	30°3'25.55E	Erven
246	SEUWE VILLAGE	246	0	24°30'30.91S	30°3'24.54E	Erven
247	SEUWE VILLAGE	250	0	24°30'32.55S	30°3'27.06E	Erven
248	SEUWE VILLAGE	276	0	24°30'27.6S	30°3'26.19E	Erven
249	SEUWE VILLAGE	287	0	24°30'27.43S	30°3'28.67E	Erven
250	SEUWE VILLAGE	290	0	24°30'28.85S	30°3'30.88E	Erven
251	SEUWE VILLAGE	234	0	24°30'32.5S	30°3'24.24E	Erven
252	SEUWE VILLAGE	236	0	24°30'31.66S	30°3'22.96E	Erven
253	SEUWE VILLAGE	243	0	24°30'29.64S	30°3'22.69E	Erven
254	SEUWE VILLAGE	248	0	24°30'31.7S	30°3'25.75E	Erven
255	SEUWE VILLAGE	252	0	24°30'31.33S	30°3'27.13E	Erven
256	SEUWE VILLAGE	253	0	24°30'30.86S	30°3'26.52E	Erven
257	SEUWE VILLAGE	255	0	24°30'30.04S	30°3'25.24E	Erven
258	SEUWE VILLAGE	261	0	24°30'26.72S	30°3'22.94E	Erven
259	SEUWE VILLAGE	264	0	24°30'28.05S	30°3'24.96E	Erven
260	SEUWE VILLAGE	270	0	24°30'30.59S	30°3'28.71E	Erven
261	SEUWE VILLAGE	271	0	24°30'29.78S	30°3'29.31E	Erven
262	SEUWE VILLAGE	272	0	24°30'29.34S	30°3'28.75E	Erven
263	SEUWE VILLAGE	277	0	24°30'27.2S	30°3'25.55E	Erven
264	SEUWE VILLAGE	282	0	24°30'25.19S	30°3'25.33E	Erven
265	SEUWE VILLAGE	286	0	24°30'26.97S	30°3'28.05E	Erven
266	SEUWE VILLAGE	291	0	24°30'22.32S	30°3'30.78E	Erven
267	SEUWE VILLAGE	237	0	24°30'31.28S	30°3'22.35E	Erven

268	SEUWE VILLAGE	238	0	24°30'30.8S	30°3'21.72E	Erven
269	SEUWE VILLAGE	241	0	24°30'28.74S	30°3'21.28E	Erven
270	SEUWE VILLAGE	247	0	24°30'31.28S	30°3'25.16E	Erven
271	SEUWE VILLAGE	258	0	24°30'28.78S	30°3'23.34E	Erven
272	SEUWE VILLAGE	263	0	24°30'27.62S	30°3'24.27E	Erven
273	SEUWE VILLAGE	267	0	24°30'29.27S	30°3'26.74E	Erven
274	SEUWE VILLAGE	268	0	24°30'29.68S	30°3'27.34E	Erven
275	SEUWE VILLAGE	273	0	24°30'28.92S	30°3'28.15E	Erven
276	SEUWE VILLAGE	279	0	24°30'26.34S	30°3'24.46E	Erven
277	SEUWE VILLAGE	283	0	24°30'25.7S	30°3'25.95E	Erven
278	SEUWE VILLAGE	289	0	24°30'28.41S	30°3'30.1E	Erven
279	SEUWE VILLAGE	292	0	24°30'41.92S	30°3'12.14E	Erven
280	SEUWE VILLAGE	239	0	24°30'30.38S	30°3'21.04E	Erven
281	SEUWE VILLAGE	244	0	24°30'30.07S	30°3'23.25E	Erven
282	SEUWE VILLAGE	265	0	24°30'28.45S	30°3'25.55E	Erven
283	SEUWE VILLAGE	278	0	24°30'26.81S	30°3'25.06E	Erven
284	SEUWE VILLAGE	294	0	24°30'39.01S	30°3'8.7E	Erven
285	SEUWE VILLAGE	296	0	24°30'30.69S	30°3'16.88E	Erven
286	SEUWE VILLAGE	219	0	24°30'32.4S	30°3'19.51E	Erven
287	SEUWE VILLAGE	225	0	24°30'32.55S	30°3'22.27E	Erven
288	SEUWE VILLAGE	230	0	24°30'34.63S	30°3'25.53E	Erven
289	SEUWE VILLAGE	251	0	24°30'31.75S	30°3'27.81E	Erven
290	SEUWE VILLAGE	259	0	24°30'28.34S	30°3'22.72E	Erven
291	SEUWE VILLAGE	262	0	24°30'27.2S	30°3'23.58E	Erven
292	SEUWE VILLAGE	269	0	24°30'30.12S	30°3'28.02E	Erven
293	SEUWE VILLAGE	275	0	24°30'28.09S	30°3'26.89E	Erven
294	SEUWE VILLAGE	284	0	24°30'26.2S	30°3'26.76E	Erven
295	SEUWE VILLAGE	293	0	24°30'23.22S	30°3'23.45E	Erven
296	SEUWE VILLAGE	295	0	24°30'31.69S	30°3'16.7E	Erven
297	HARMONY	118	0	24°29'28.39S	30°6'8.66E	Farm
298	HARMONY	116	0	24°28'0.06S	30°1'33.08E	Farm
299	HARMONY	117	0	24°27'29.08S	30°5'14.06E	Farm
300	WINNAARSHOEK	250	0	24°30'56.54S	30°2'56.54E	Farm
301	DSJATE	249	0	24°30'36.78S	30°0'41.15E	Farm
302	MALOKELA	252	0	24°33'8.62S	30°1'21.51E	Farm
303		253	0	24°32'7.18S	30°5'12.18E	Farm
304	HARMONY	117	1	24°28'41.93S	30°4'6.77E	Farm Portion
305	HARMONY	118	0	24°28'3.19S	30°7'20.65E	Farm Portion
306	WINNAARSHOEK	250	10	24°30'59.24S	30°2'40.96E	Farm Portion
307	HARMONY	118	1	24°28'32.66S	30°6'58.48E	Farm Portion
308		253	6	24°31'39.25S	30°3'51.49E	Farm Portion
309	HARMONY	116	0	24°28'17.89S	30°0'55.84E	Farm Portion
310	HARMONY	118	9	24°29'54.55S	30°5'57.89E	Farm Portion
311	WINNAARSHOEK	250	9	24°30'18.33S	30°2'58.59E	Farm Portion
312	WINNAARSHOEK	250	12	24°29'33.01S	30°3'22.65E	Farm Portion
313	HARMONY	116	0	24°28'0.06S	30°1'33.08E	Farm Portion
314	HARMONY	117	0	24°26'58.34S	30°6'56.16E	Farm Portion
315	HARMONY	117	19	24°28'37.62S	30°3'48.42E	Farm Portion
316	HARMONY	118	0	24°29'43.38S	30°5'32.01E	Farm Portion
317		253	5	24°31'15.13S	30°5'5.23E	Farm Portion
318	HARMONY	117	2	24°26'42.26S	30°5'33.52E	Farm Portion
319	DSJATE	249	0	24°30'23.13S	30°0'41.25E	Farm Portion
320	WINNAARSHOEK	250	11	24°32'27.09S	30°2'54.81E	Farm Portion
321	MALOKELA	252	0	24°33'8.62S	30°1'21.51E	Farm Portion
322	HARMONY	118	8	24°28'56.93S	30°7'0.41E	Farm Portion
323	WINNAARSHOEK	250	1	24°29'48.89S	30°3'57.72E	Farm Portion
324	WINNAARSHOEK	250	0	24°31'9.96S	30°2'45.72E	Farm Portion
325		253	0	24°32'13.88S	30°4'48.49E	Farm Portion
326	SEUWE VILLAGE	300	0	24°30'20.04S	30°3'18.43E	Public Place
327	SEUWE VILLAGE	298	0	24°30'23.17S	30°3'15.06E	Public Place

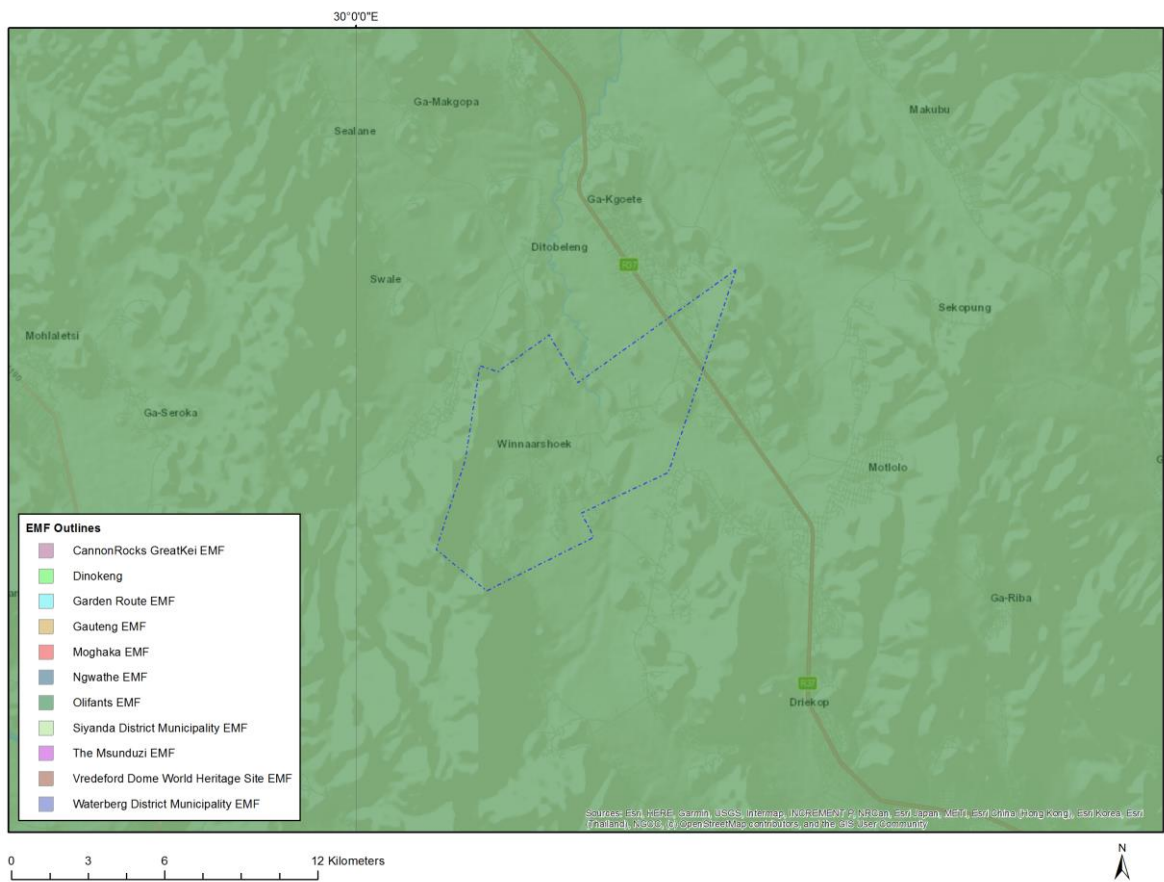
328	SEUWE VILLAGE	297	0	24°30'27.97S	30°3'7.85E	Public Place
329	SEUWE VILLAGE	299	0	24°30'21.87S	30°3'16.63E	Public Place

Development footprint¹ vertices:
 No development footprint(s) specified.

Wind and Solar developments with an approved Environmental Authorisation or applications under consideration within 30 km of the proposed area

No nearby wind or solar developments found.

Environmental Management Frameworks relevant to the application



Environmental Management Framework	LINK
---	-------------

¹ “development footprint”, means the area within the site on which the development will take place and includes all ancillary developments for example roads, power lines, boundary walls, paving etc. which require vegetation clearance or which will be disturbed and for which the application has been submitted.

Olifants EMF	https://screening.environment.gov.za/ScreeningDownloads/EMF/Zone_46, 67, 78, 80, 92, 103, 122, 129.pdf
--------------	---

Environmental screening results and assessment outcomes

The following sections contain a summary of any development incentives, restrictions, exclusions or prohibitions that apply to the proposed development site as well as the most environmental sensitive features on the site based on the site sensitivity screening results for the application classification that was selected. The application classification selected for this report is:

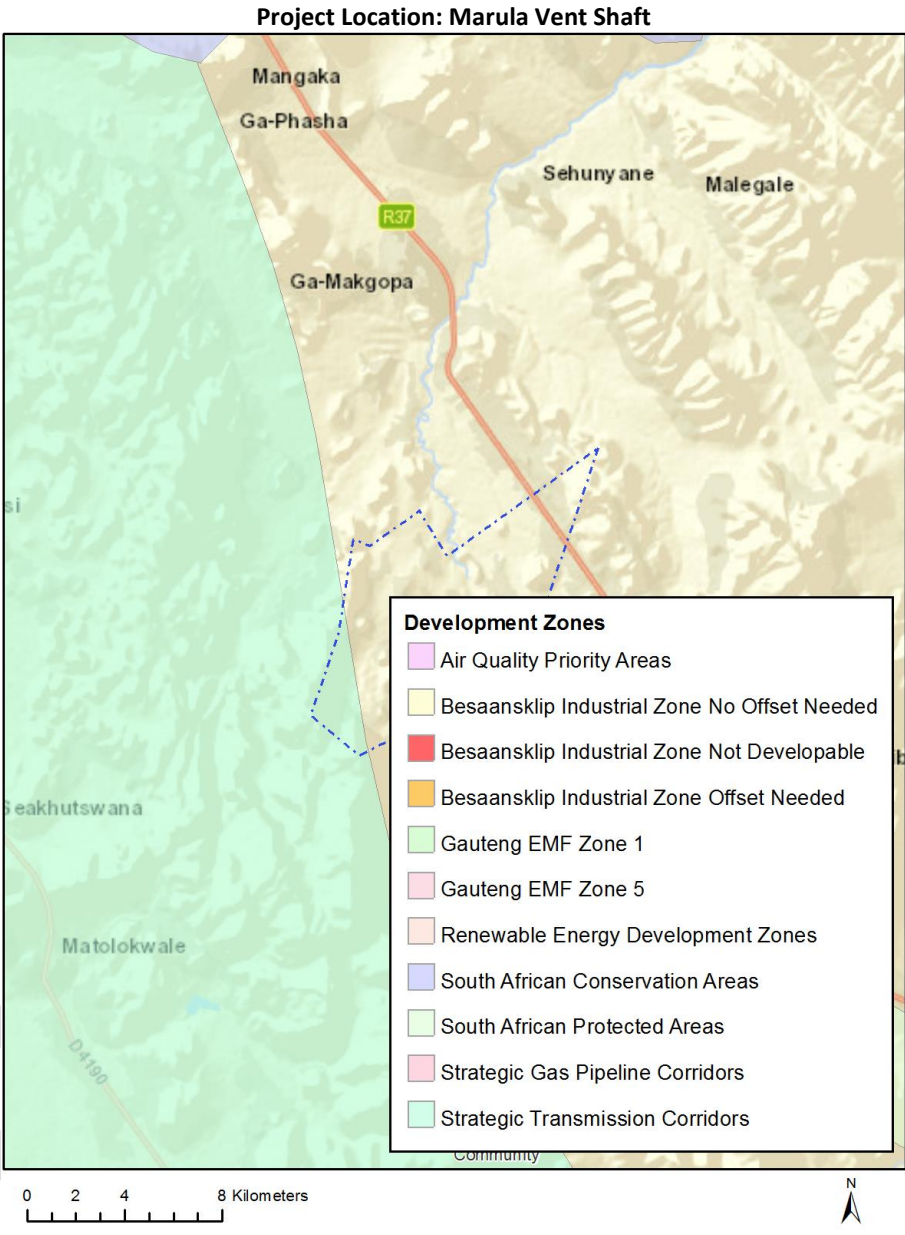
Mining | Mining Right.

Relevant development incentives, restrictions, exclusions or prohibitions

The following development incentives, restrictions, exclusions or prohibitions and their implications that apply to this site are indicated below.

Incentive, restriction or prohibition	Implication
Strategic Transmission Corridor- International corridor	https://screening.environment.gov.za/ScreeningDownloads/DevelopmentZones/Combined_EGI.pdf

Map indicating proposed development footprint within applicable development incentive, restriction, exclusion or prohibition zones



Proposed Development Area Environmental Sensitivity

The following summary of the development site environmental sensitivities is identified. Only the highest environmental sensitivity is indicated. The footprint environmental sensitivities for the proposed development footprint as identified, are indicative only and must be verified on site by a suitably qualified person before the specialist assessments identified below can be confirmed.

Theme	Very High sensitivity	High sensitivity	Medium sensitivity	Low sensitivity
Agriculture Theme	X			
Animal Species Theme		X		

Aquatic Biodiversity Theme				X
Archaeological and Cultural Heritage Theme	X			
Civil Aviation Theme		X		
Defence Theme			X	
Paleontology Theme			X	
Plant Species Theme			X	
Terrestrial Biodiversity Theme	X			

Specialist assessments identified

Based on the selected classification, and the environmental sensitivities of the proposed development footprint, the following list of specialist assessments have been identified for inclusion in the assessment report. It is the responsibility of the EAP to confirm this list and to motivate in the assessment report, the reason for not including any of the identified specialist study including the provision of photographic evidence of the site situation.

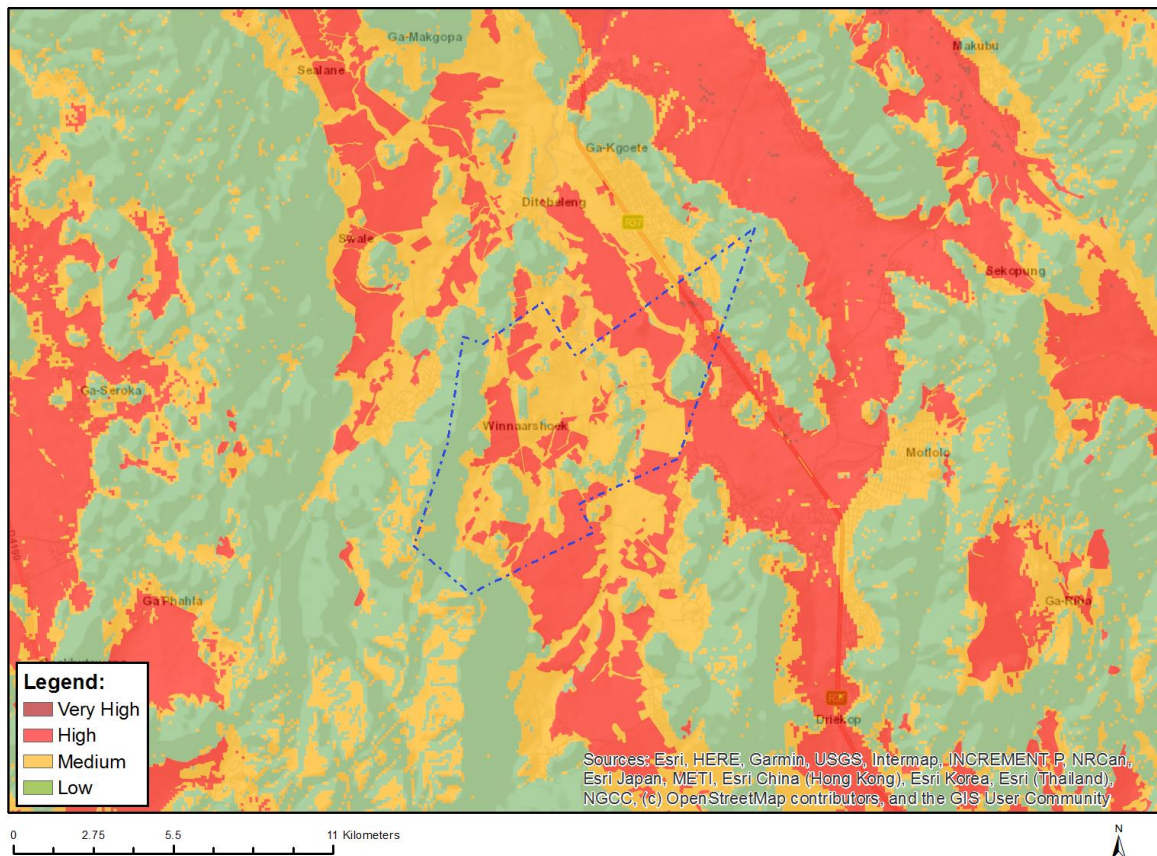
N o	Specialist assessment	Assessment Protocol
1	Agricultural Impact Assessment	https://screening.environment.gov.za/ScreeningDownloads/AssessmentProtocols/Gazetted_General_Agriculture_Assessment_Protocols.pdf
2	Landscape/Visual Impact Assessment	https://screening.environment.gov.za/ScreeningDownloads/AssessmentProtocols/Gazetted_General_Requirement_Assessment_Protocols.pdf
3	Archaeological and Cultural Heritage Impact Assessment	https://screening.environment.gov.za/ScreeningDownloads/AssessmentProtocols/Gazetted_General_Requirement_Assessment_Protocols.pdf
4	Palaeontology Impact Assessment	https://screening.environment.gov.za/ScreeningDownloads/AssessmentProtocols/Gazetted_General_Requirement_Assessment_Protocols.pdf
5	Terrestrial Biodiversity Impact Assessment	https://screening.environment.gov.za/ScreeningDownloads/AssessmentProtocols/Gazetted_Terrestrial_Biodiversity_Assessment_Protocols.pdf
6	Aquatic Biodiversity Impact Assessment	https://screening.environment.gov.za/ScreeningDownloads/AssessmentProtocols/Gazetted_Aquatic_Biodiversity_Assessment_Protocols.pdf
7	Hydrology	https://screening.environment.gov.za/ScreeningDownloads/AssessmentProtocols

	Assessment	/Gazetted General Requirement Assessment Protocols.pdf
8	Noise Impact Assessment	https://screening.environment.gov.za/ScreeningDownloads/AssessmentProtocols/Gazetted Noise Impacts Assessment Protocol.pdf
9	Radioactivity Impact Assessment	https://screening.environment.gov.za/ScreeningDownloads/AssessmentProtocols/Gazetted General Requirement Assessment Protocols.pdf
10	Traffic Impact Assessment	https://screening.environment.gov.za/ScreeningDownloads/AssessmentProtocols/Gazetted General Requirement Assessment Protocols.pdf
11	Geotechnical Assessment	https://screening.environment.gov.za/ScreeningDownloads/AssessmentProtocols/Gazetted General Requirement Assessment Protocols.pdf
12	Climate Impact Assessment	https://screening.environment.gov.za/ScreeningDownloads/AssessmentProtocols/Gazetted General Requirement Assessment Protocols.pdf
13	Health Impact Assessment	https://screening.environment.gov.za/ScreeningDownloads/AssessmentProtocols/Gazetted General Requirement Assessment Protocols.pdf
14	Socio-Economic Assessment	https://screening.environment.gov.za/ScreeningDownloads/AssessmentProtocols/Gazetted General Requirement Assessment Protocols.pdf
15	Ambient Air Quality Impact Assessment	https://screening.environment.gov.za/ScreeningDownloads/AssessmentProtocols/Gazetted General Requirement Assessment Protocols.pdf
16	Seismicity Assessment	https://screening.environment.gov.za/ScreeningDownloads/AssessmentProtocols/Gazetted General Requirement Assessment Protocols.pdf
17	Plant Species Assessment	https://screening.environment.gov.za/ScreeningDownloads/AssessmentProtocols/Gazetted Plant Species Assessment Protocols.pdf
18	Animal Species Assessment	https://screening.environment.gov.za/ScreeningDownloads/AssessmentProtocols/Gazetted Animal Species Assessment Protocols.pdf

Results of the environmental sensitivity of the proposed area.

The following section represents the results of the screening for environmental sensitivity of the proposed site for relevant environmental themes associated with the project classification. It is the duty of the EAP to ensure that the environmental themes provided by the screening tool are comprehensive and complete for the project. Refer to the disclaimer.

MAP OF RELATIVE AGRICULTURE THEME SENSITIVITY

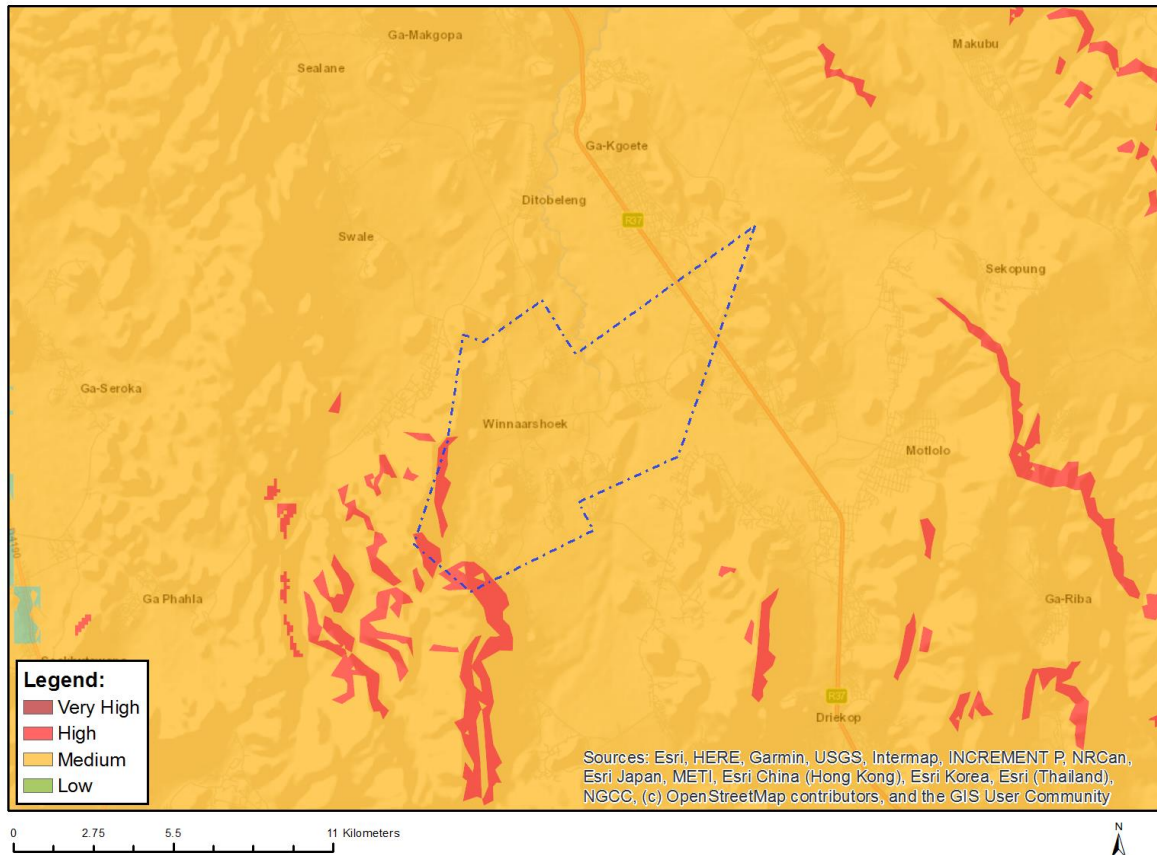


Very High sensitivity	High sensitivity	Medium sensitivity	Low sensitivity
X			

Sensitivity Features:

Sensitivity	Feature(s)
High	Land capability;09. Moderate-High/10. Moderate-High
High	Subsistence Farming;Land capability;06. Low-Moderate/07. Low-Moderate/08. Moderate
High	Subsistence Farming;Land capability;01. Very low/02. Very low/03. Low-Very low/04. Low-Very low/05. Low
High	Subsistence Farming;Land capability;09. Moderate-High/10. Moderate-High
Low	Land capability;01. Very low/02. Very low/03. Low-Very low/04. Low-Very low/05. Low
Medium	Land capability;06. Low-Moderate/07. Low-Moderate/08. Moderate
Very High	Land capability;11. High/12. High-Very high/13. High-Very high/14. Very high/15. Very high
Very High	Subsistence Farming;Land capability;11. High/12. High-Very high/13. High-Very high/14. Very high/15. Very high

MAP OF RELATIVE ANIMAL SPECIES THEME SENSITIVITY



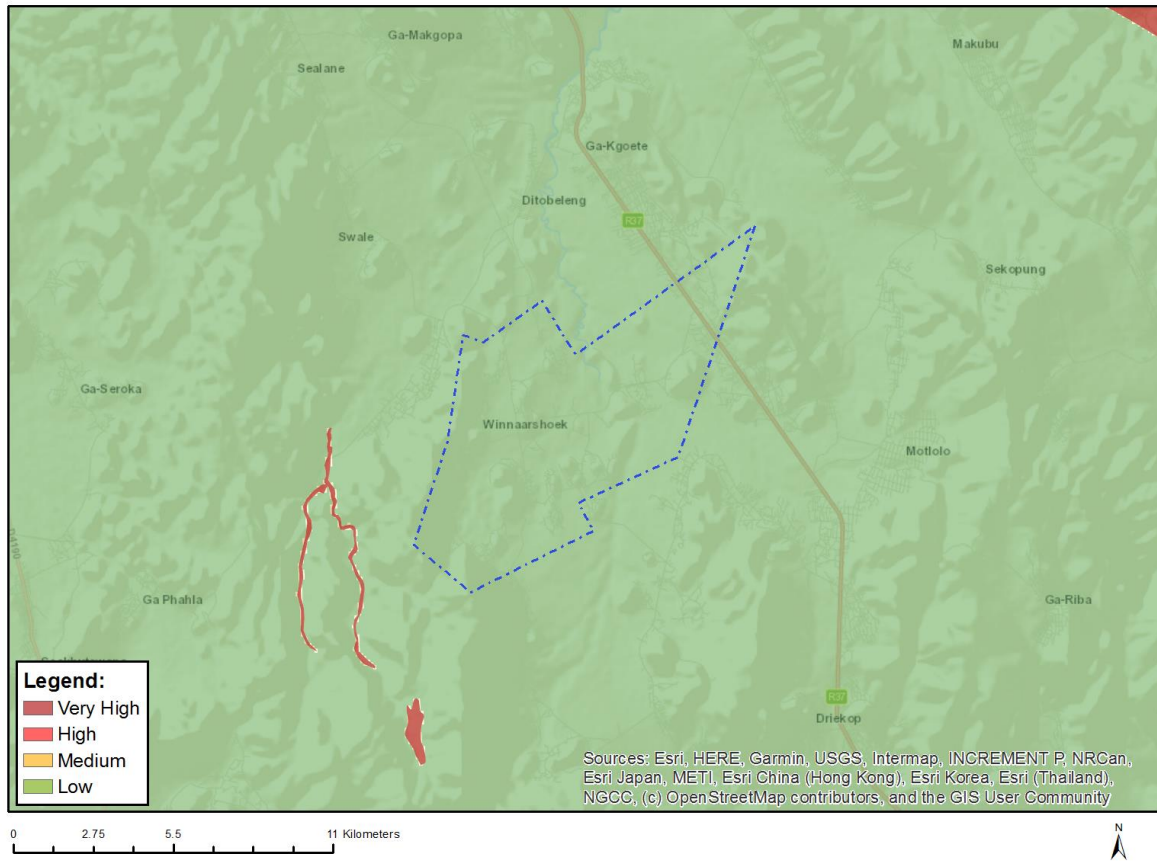
Where only a sensitive plant unique number or sensitive animal unique number is provided in the screening report and an assessment is required, the environmental assessment practitioner (EAP) or specialist is required to email SANBI at eiadatarequests@sanbi.org.za listing all sensitive species with their unique identifiers for which information is required. The name has been withheld as the species may be prone to illegal harvesting and must be protected. SANBI will release the actual species name after the details of the EAP or specialist have been documented.

Very High sensitivity	High sensitivity	Medium sensitivity	Low sensitivity
	X		

Sensitivity Features:

Sensitivity	Feature(s)
High	Aves-Gyps coprotheres
Medium	Invertebrate-Aroegas fuscus
Medium	Aves-Sagittarius serpentarius
Medium	Aves-Aquila verreauxii
Medium	Mammalia-Chrysospalax villosus
Medium	Mammalia-Crocidura maquassiensis
Medium	Mammalia-Dasymys robertsii
Medium	Sensitive species 12

MAP OF RELATIVE AQUATIC BIODIVERSITY THEME SENSITIVITY

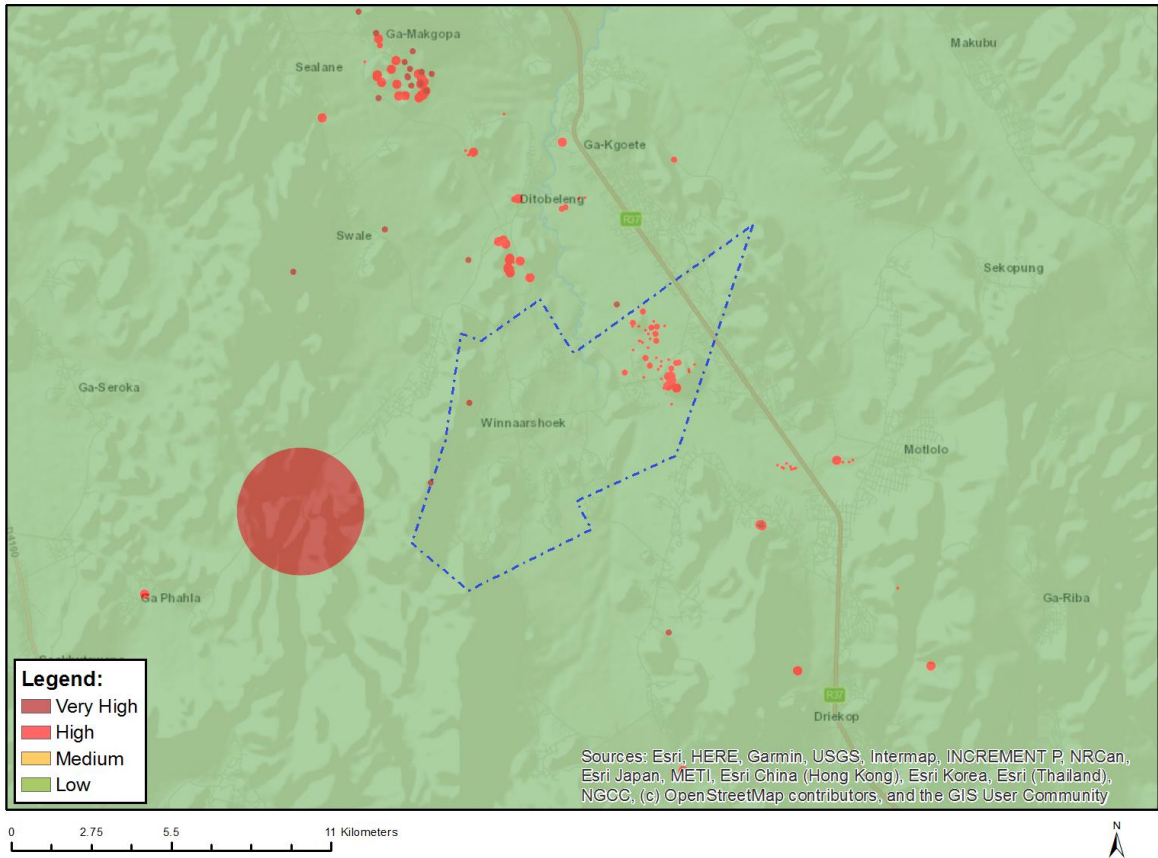


Very High sensitivity	High sensitivity	Medium sensitivity	Low sensitivity
			X

Sensitivity Features:

Sensitivity	Feature(s)
Low	Low sensitivity

MAP OF RELATIVE ARCHAEOLOGICAL AND CULTURAL HERITAGE THEME SENSITIVITY

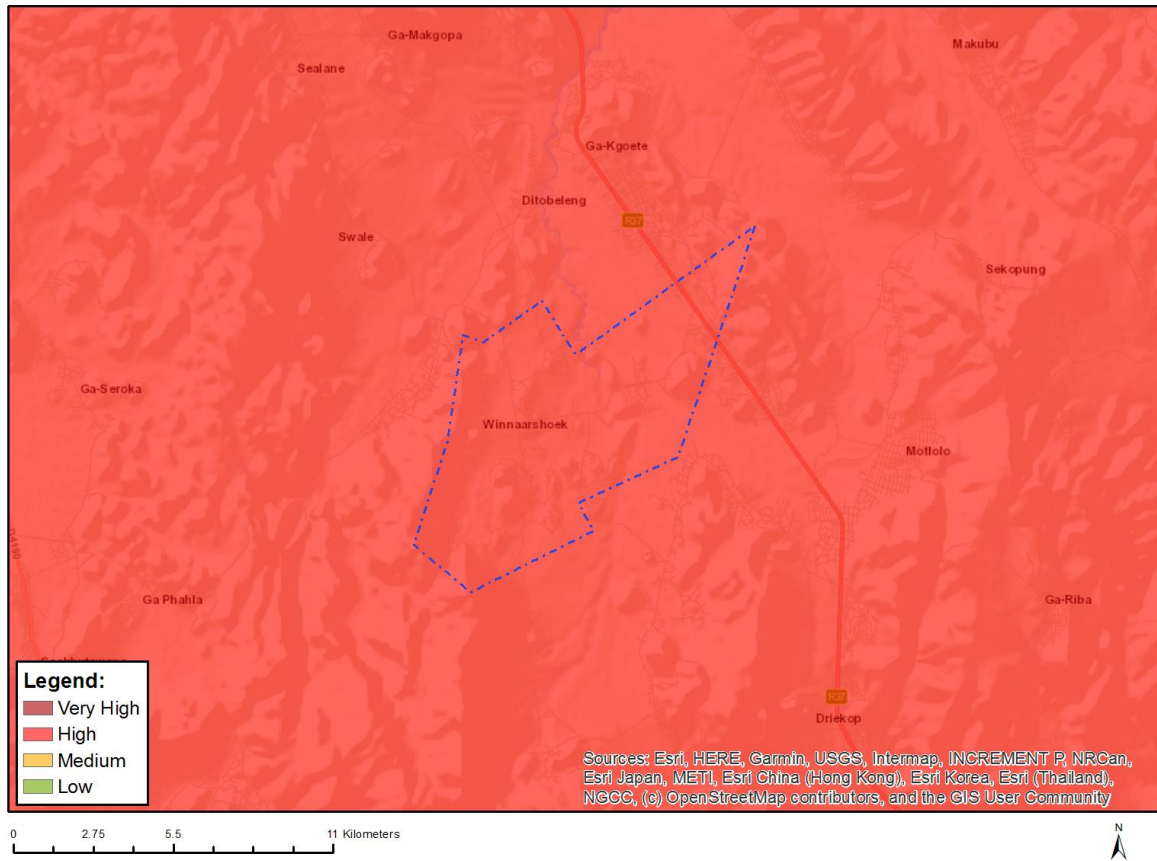


Very High sensitivity	High sensitivity	Medium sensitivity	Low sensitivity
X			

Sensitivity Features:

Sensitivity	Feature(s)
High	Within 150m of a Grade IIIa Heritage site
High	Within 100m of a Grade IIIb Heritage site
High	Within 50m of a Grade IIIc Heritage site
Low	Low sensitivity
Very High	Within 100m of an Ungraded Heritage site

MAP OF RELATIVE CIVIL AVIATION THEME SENSITIVITY

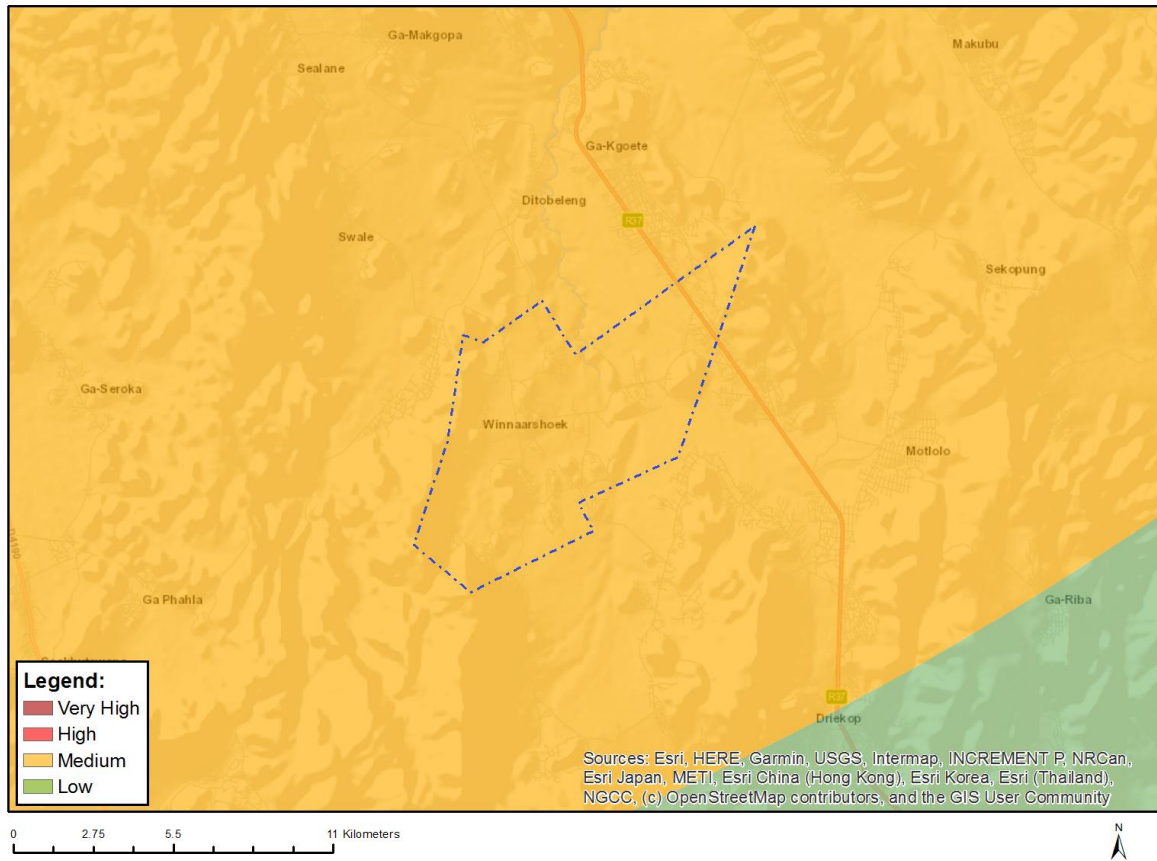


Very High sensitivity	High sensitivity	Medium sensitivity	Low sensitivity
	X		

Sensitivity Features:

Sensitivity	Feature(s)
High	Dangerous and restricted airspace as demarcated
Medium	Between 8 and 15 km of other civil aviation aerodrome

MAP OF RELATIVE DEFENCE THEME SENSITIVITY

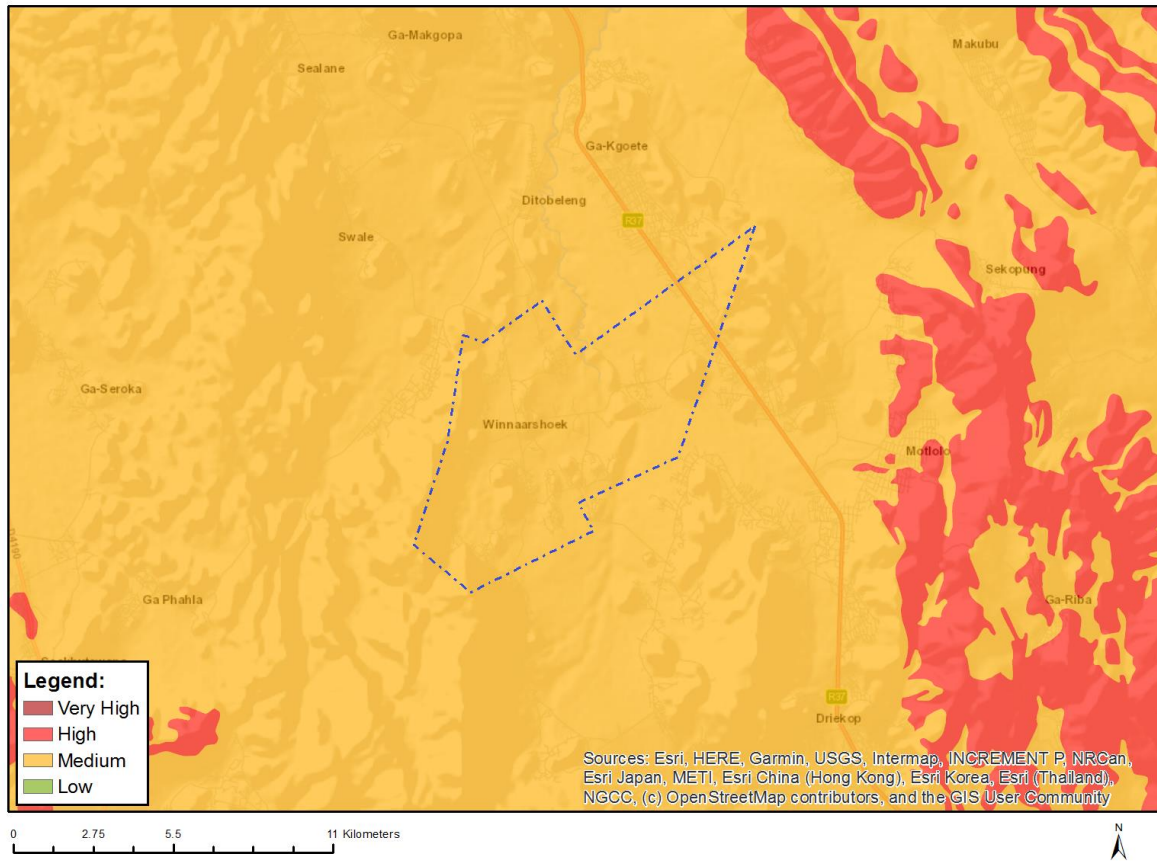


Very High sensitivity	High sensitivity	Medium sensitivity	Low sensitivity
		X	

Sensitivity Features:

Sensitivity	Feature(s)
Medium	Military and Defence Site

MAP OF RELATIVE PALEONTOLOGY THEME SENSITIVITY

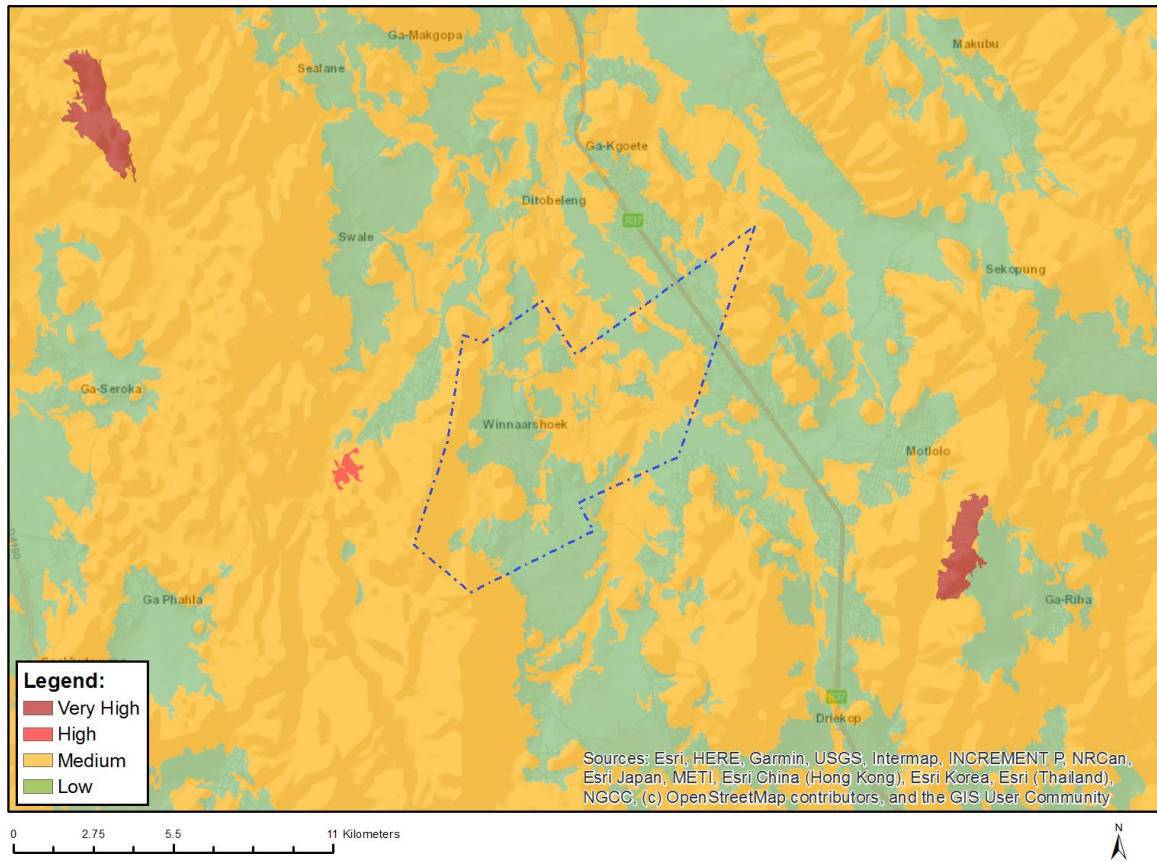


Very High sensitivity	High sensitivity	Medium sensitivity	Low sensitivity
		X	

Sensitivity Features:

Sensitivity	Feature(s)
Medium	Features with a Medium paleontological sensitivity

MAP OF RELATIVE PLANT SPECIES THEME SENSITIVITY



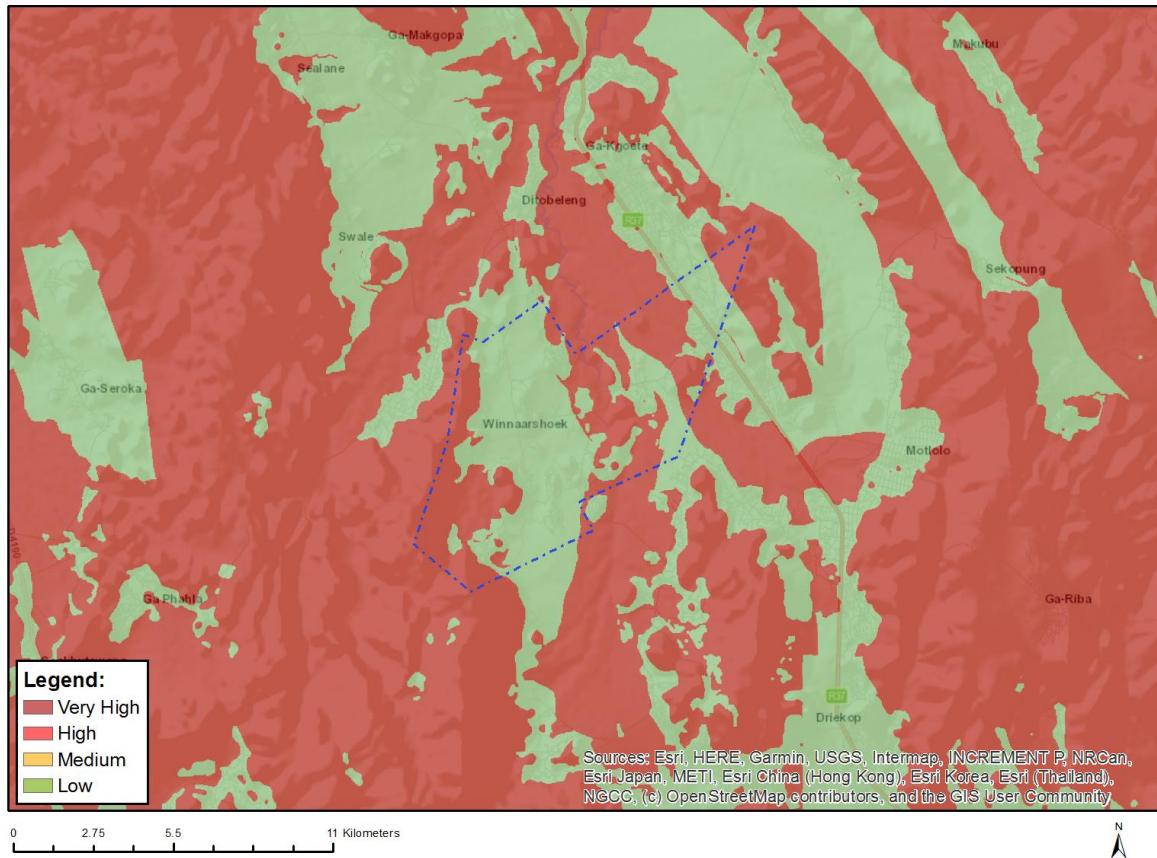
Where only a sensitive plant unique number or sensitive animal unique number is provided in the screening report and an assessment is required, the environmental assessment practitioner (EAP) or specialist is required to email SANBI at eiadatarequests@sanbi.org.za listing all sensitive species with their unique identifiers for which information is required. The name has been withheld as the species may be prone to illegal harvesting and must be protected. SANBI will release the actual species name after the details of the EAP or specialist have been documented.

Very High sensitivity	High sensitivity	Medium sensitivity	Low sensitivity
		X	

Sensitivity Features:

Sensitivity	Feature(s)
Low	Low Sensitivity
Medium	Sensitive species 1252
Medium	Sensitive species 1033
Medium	Sensitive species 587
Medium	Asparagus fourei
Medium	Asparagus sekukuniensis
Medium	Sensitive species 303
Medium	Plectranthus venterii
Medium	Polygala sekhukhuniensis
Medium	Sensitive species 92
Medium	Searsia batophylla
Medium	Searsia sekhukhuniensis
Medium	Combretum petrophilum

MAP OF RELATIVE TERRESTRIAL BIODIVERSITY THEME SENSITIVITY



Very High sensitivity	High sensitivity	Medium sensitivity	Low sensitivity
X			

Sensitivity Features:

Sensitivity	Feature(s)
Low	Low Sensitivity
Very High	Critical biodiversity area 1
Very High	Critical biodiversity area 2
Very High	Ecological support area 1
Very High	Ecological support area 2