



Emvelo Quality and Environmental consultant (PTY) Ltd

38 Jacaranda Street, Arboretum, Richards Bay, 3900.

P.O. Box 101672, Meerensee, 3901

Tel: 035 789 0632 1 8760, Cell: (078) 2849 332 Fax: 086 577 5220,

BACKGROUND INFORMATION

Kwahlokoheko SSA1 Phase 1H: Upgrading of Raw Water Supply Pipeline to Phobane WTW and Upgrading of Phobane WTW, Within Ward 27 of Umlalazi Municipality, King Cetshwayo District, KwaZulu Natal.

AUGUST 2022

Prepared By:

**Emvelo Quality and Environmental Consultant
(PTY) Ltd**

Prepared For:

Eyethu Engineers (PTY) Ltd



On Behalf Of:

King Cetshwayo District Municipality



KING CETSHWAYO
DISTRICT MUNICIPALITY

INTRODUCTION/BACKGROUND

Emvelo Quality and Environmental Consultant has been appointed by Eyethu Engineers (Pty) Ltd, on behalf of King Cetshwayo District Municipality for the Kwahlokhloko SSA1 Phase 1H: Upgrading of Raw Water Supply Pipeline to Phobane WTW and Upgrading of Phobane WTW, within Ward 27 of uMlalazi Municipality, King Cetshwayo District, KwaZulu Natal.

The King Cetshwayo District Municipality is the delegated Water Service Authority (WSA) for all rural municipalities within the district, with the exception of uMhlathuze Local Municipality.

In response to the growing urgency to secure adequate and sustainable bulk water supplies required to address the current water shortages and long-term demands, King Cetshwayo Municipality intend to upgrade the Phobane Water Treatment Works (WTW). The proposed upgrades focuses on Phase 1H of the overall project, the upgrade of the existing 20M ℓ /day Phobane WTW, which will allow for increased supply into the Greater Mthonjaneni, Kwahlokhloko and Eshowe supply areas in line with the projected demands with adequate water supply designed for 20-year plan projection, at least up to 2043.

The existing Phobane Water Treatment Works (WTW) comprise of a 600 diameter 300m water supply pipeline, a 40MI inlet works, 2 x 15ML/d Clarifiers, 5 module Filter building 1ML clearwater reservoir, 3 x Pump stations and 3 x Sludge ponds.

The implementation of phase 1H, will increase the capacity of the Phobane WTW from 20Mℓ /day to 35Mℓ /day in order to meet the increased demand for network extensions.

Consequently, an environmental impact assessment (EIA) has commenced, assisting the King Cetshwayo District Municipality (applicant) in identifying all potential adverse environmental consequences of the project, their extent, significance and to ensure that the environmental management requirements are adequately implemented.

The purpose of this Background Information Document (BID) is to provide you, as an Interested or Affected Party (I&AP), with a brief description of the EIA process to be undertaken and to obtain comments and contributions from I&AP's with regards to the potential impacts to the environment by the proposed project.

PROJECT DESCRIPTION

The construction activities entails:

- ✚ Construction of new 895m (1000Ø) Raw Water Supply pipeline to convey 760ℓ /s (35Mℓ /day) Raw water supply from Goedertrouw dam outlet works to Phobane WTW. This will involve a duplicate pipeline for redundancy (existing pipeline to thereafter be abandoned);
- ✚ Tie-in to the Goedertrouw Dam outlet works;
- ✚ New 80Mℓ/day inlet works;
- ✚ Construction of New 4x flocculation channels (approximately 50M ℓ /day);
- ✚ Construction of two (2) New clarifier of 15Mℓ /day each;
- ✚ New 32M ℓ /day 8 module filter bank including backwash system;
- ✚ Upgraded sludge treatment including sludge thickening, storage and disposal;
- ✚ Upgrading pre and post chemical storage and dosing.

Implementation of Kwahlokhloko SSA1 Phase 1H will increase the overall production capacity of the treatment works to 50M ℓ /day, some parts will be constructed to serve

the eventual 80M ℓ /day, initially the actual production will be limited to 38M ℓ /day on the current water use license until the application for increased abstraction is made.

PROJECT LOCATION

The proposed development will take place within Normanhurst Farm No. 13023, Portion 0 at Kwahlokhloko next to Goedertrouw Dam, Ward 27 of uMlalazi Local Municipality.

The project area is within Quaternary Catchment W12D of Pongola-Mtamvuma Catchment Management Area.

The site co-ordinates are as follows:

Raw Water Main Option 2	
Start (Abstraction)	28°46'14.60"S, 31°28'14.67"E
First Bend	28°46'22.68"S, 31°28'16.61"E
Second Bend (Middle)	28°46'28.33"S, 31°28'23.22"E
Watercourse Crossing	28°46'28.01"S, 31°28'22.72"E
Third bend	28°46'22.70"S, 31°28'27.89"E
End (WTW)	28°46'21.09"S, 31°28'33.12"E
Raw Water Main Option 1	
Start (Abstraction)	28°46'14.60"S, 31°28'14.67"E
First Bend	28°46'17.91"S, 31°28'15.40"E
Watercourse Crossing	28°46'19.33"S, 31°28'22.76"E
End (WTW)	28°46'21.09"S, 31°28'33.12"E

WHAT IS AN ENVIRONMENTAL IMPACT ASSESSMENT?

An EIA is an effective planning and decision-making tool, which allows for the identification of potential adverse environmental consequences of a proposed project, and its management through the planning process.

In terms of the National Environmental Management Act, 1998 (Act No.107 of 1998), as read with the Environmental Impact Assessment (EIA) Regulations of 2014 as amended in 2017, an Environmental Authorization must be obtained from the relevant decision-making authority, the Department Economic Development, Tourism and Environmental Affairs (DEDTEA) prior to the commencement of any of the listed activities that may result in potential negative impacts on the environment. Thus, an environmental impact assessment is required. A Basic assessment that includes the public participation process will be performed.

ENVIRONMENTAL IMPACT ASSESSMENT PROCESS

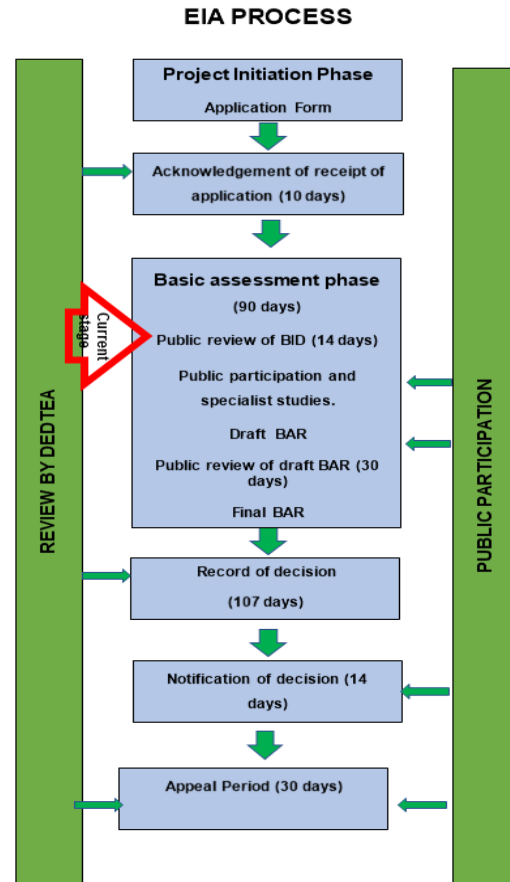


Figure 1: EIA process

In terms of the Environmental Impact Assessment (EIA) regulations, an independent Environmental Assessment Practitioner must be appointed to conduct the EIA. Therefore, Envolo Consultant has been appointed by Eyethu Engineers (Pty) Ltd, on behalf of King Cetshwayo District Municipality to conduct the EIA.

Envolo Consultant will identify and assess the potential environmental impacts associated with the proposed activity by conducting an objective and independent

EIA in which all the relevant information and opinions of Interested and Affected Parties (I&APs) will be collected and passed on to the Department of Economic Development, Tourism and Environmental Affairs (EDTEA) In this way, an informed decision-making process can take place.

LISTED ACTIVITIES TRIGGERED BY THIS PROJECT

The proposed project triggers the following listed activities of the EIA Listing Notices;

Table 1: Listed Activities

LISTING NOTICE	ACTIVITY	DESCRIPTION OF ACTIVITY
1	19	The infilling or depositing of any material of more than 5 cubic metres into, or the dredging, excavation, removal or moving of soil, sand, shells, shell grit, pebbles, or rock of more than 5 cubic metres from- (i)A watercourse, (ii)the seashore; (iii)the littoral active zone, an estuary, or a distance of 100 metres inland of

LISTING NOTICE	ACTIVITY	DESCRIPTION OF ACTIVITY
		the high-water mark of the sea or an estuary- but excluding where such infilling, depositing, dredging, excavation, removal or moving— (a) will occur behind a development setback; (b) is for maintenance purposes undertaken in accordance with a maintenance management plan; [or] (c) falls within the ambit of activity 21 in this Notice, in which case that activity applies; (d) occurs within existing ports or harbours that will not increase the development footprint of the port or harbour; or (e) where such development is related to the development of a port or harbour, in which case activity 26 in Listing Notice 2 of 2014 applies.

LISTING NOTICE	ACTIVITY	DESCRIPTION OF ACTIVITY
		<p>Applicability: The new 895m (1000Ø) Raw Water Supply pipeline will traverse the NFEPA Wetlands. There are two points of NFEPA interception: Within Goedertrouw Dam outlet works at 28°46'14.60"S, 31°28'14.67"E, and midway at 28°46'28.01"S, 31°28'22.72"E. Therefore, there will be excavation, infilling within watercourses, as a result of Goedertrouw spillway stream crossings, and wetlands, as well as raw mains from abstraction works.</p>

applying for environmental authorization for certain developments. A provision in the EIA Regulations is made for two forms of assessment: Basic Assessment and Scoping & EIA, depending on the scope of the activity. The EIA regulations specify that: Activities identified in Listing Notice 1 and 3 (GNR 327 and 324 of 2017) requires a Basic Assessment while activities identified in Listing Notice 2 (GNR 325 of 2017) are subject to a Scoping and EIA.

The listed activity associated with the proposed development is: Listing Notice 1, Activity 19. Therefore, this application will follow a **Basic Assessment Process**, as a result mentioned Listing Notice 1 trigger.

WHAT IS PUBLIC PARTICIPATION?

Public participation is the process that promotes information sharing, consultation and active involvement amongst stakeholders, and all interested and affected parties.

During the Public Participation Process, input from the proponent, technical experts, government authorities and the general public will be gathered to result in a better understanding of the project for all involved

The NEMA, and the Environmental Impact Assessment (EIA) Regulations (2014) as amended in 2017, govern the process of

thus ensuring an informed decision-making throughout the process.

REGISTRATION OF INTERESTED AND AFFECTED PARTIES.

Any person, company, authority or other entity that might be directly or indirectly affected by the proposed activity is invited to register as an I&AP, in order to assist the EAP in identifying possible environmental, economic and social impacts of the proposed development and to make suggestions for mitigations. These comments will be included as part of the Basic assessment report which will be submitted to the Department of Economic Development, Tourism and Environmental Affairs for consideration.

Interested and affected parties (I&APs) may forward their written comments along with their contact details within 14 days from receiving the document to; **Phumzile Lembede**.

Postal address: P. O. Box 101672, Meerensee,3901;

Tel: 035 789 0632;

Fax: 086 577 5220,

Email: Info@emveloconsultants.co.za.

APPENDIX A: (LOCALITY MAP)

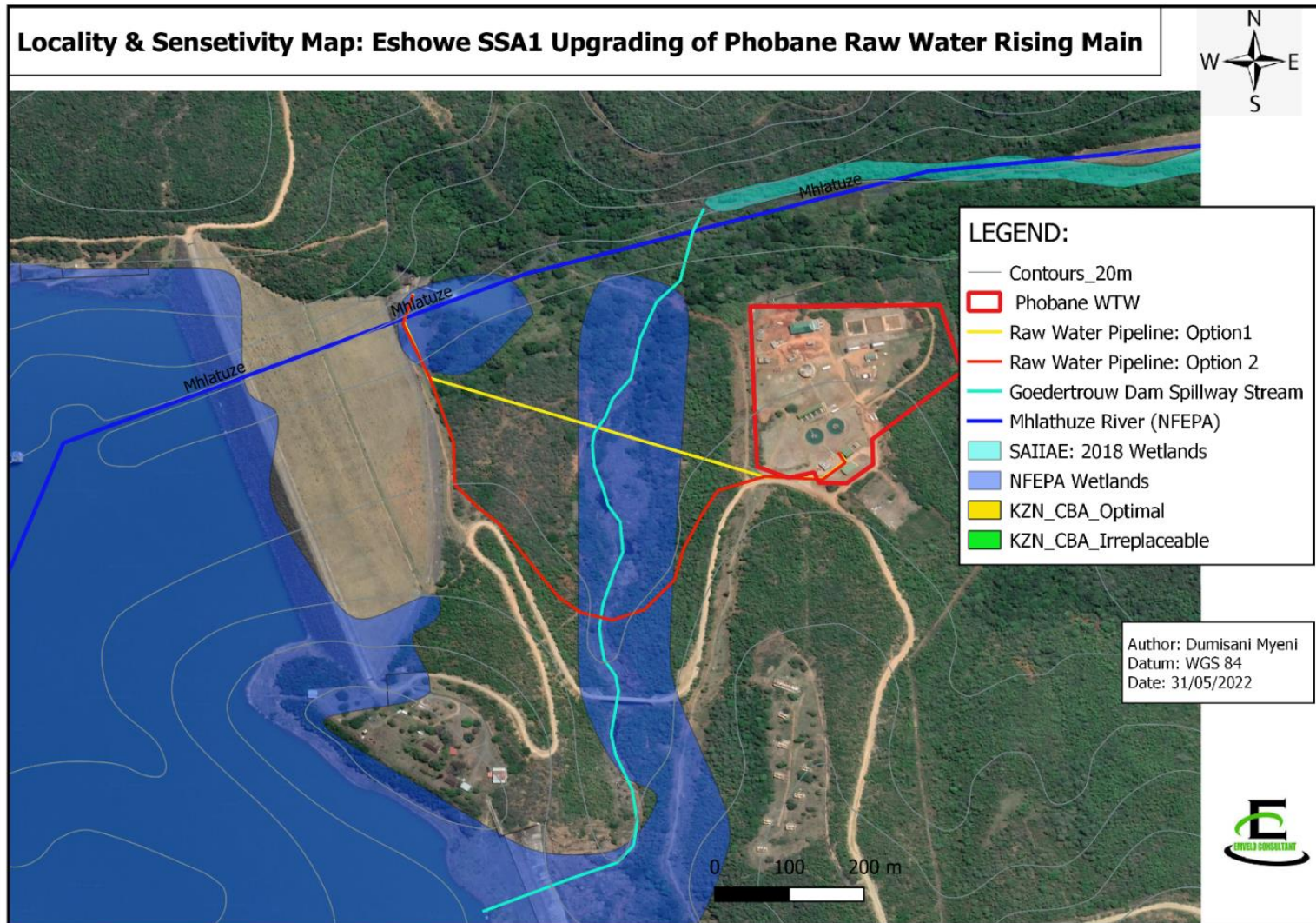


Figure 2: Map Showing Locality of proposed development

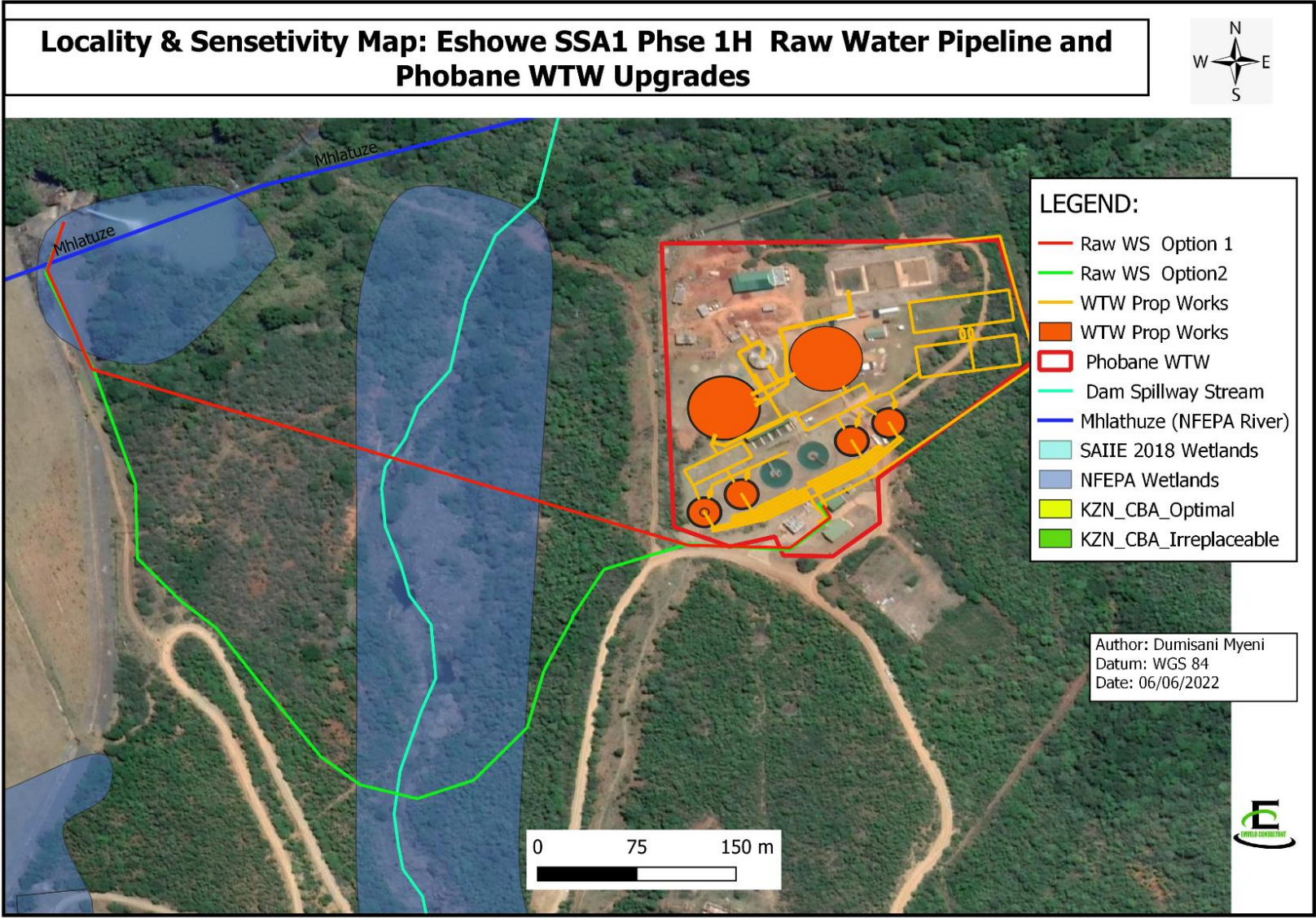


Figure 3: Map Showing Locality of proposed development

