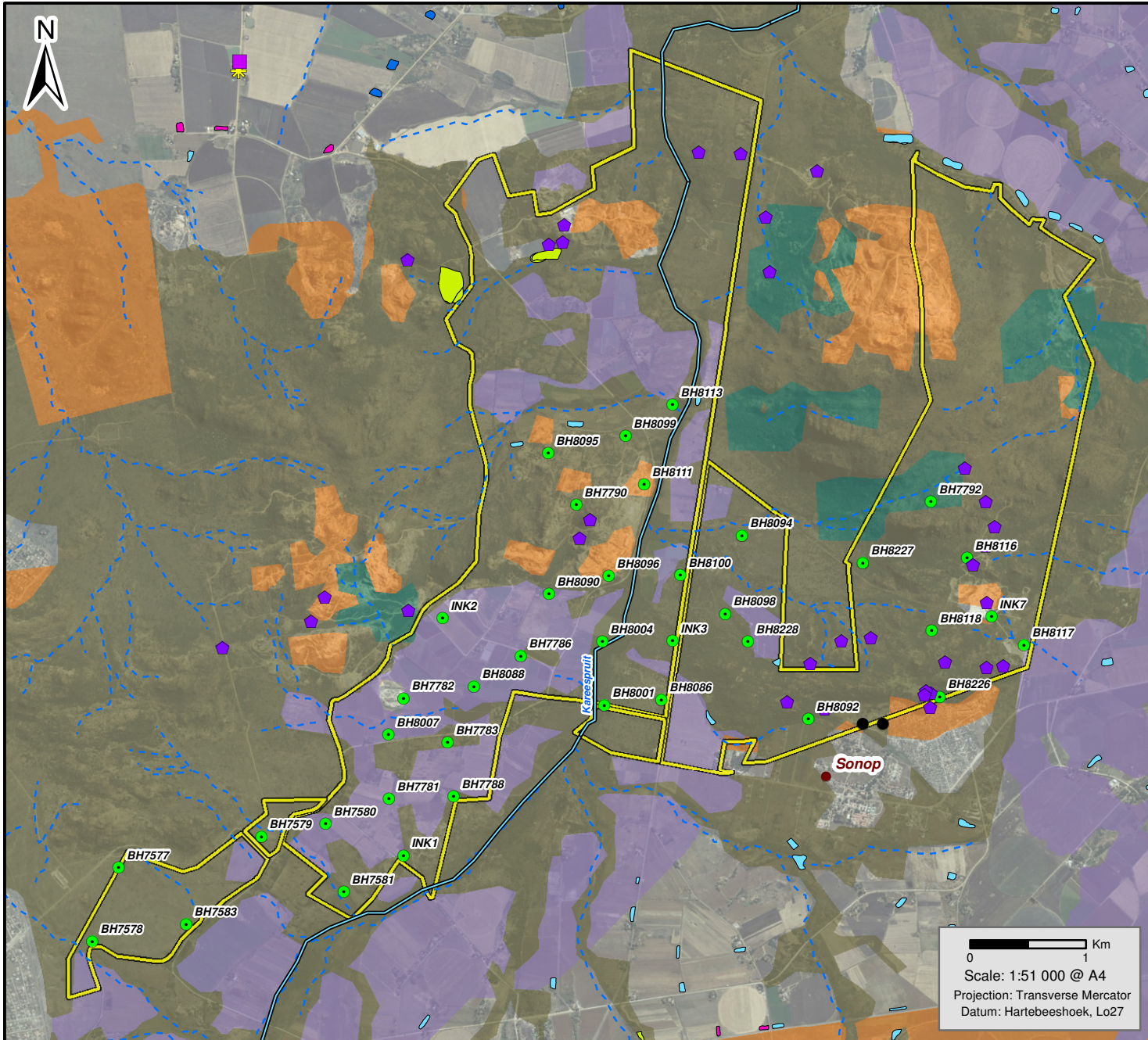


## APPENDIX E: COMPOSITE MAP (FIGURE 6)



**Legend**

- Villages / Towns
- ▭ Inkosi Greater Prospecting Right Area
- Drill Sites
- Graveyards
- Historical House
- ⬠ Late Iron Age Sites
- ★ Tobacco Shed
- North West CBA and ESA (2015)
- Critical Biodiversity Area 1
- Critical Biodiversity Area 2
- Ecological Support Area 1
- Ecological Support Area 2
- NFEPA Wetlands
- Channelled valley-bottom wetland
- Unchannelled valley-bottom wetland
- Valleyhead seep
- Flat
- NFEPA Rivers
- CLASS C: Moderately Modified

Inkosi Platinum (Pty) Ltd

Figure 6

**Sensitivity**

**SLR** SLR Consulting (Africa) (Pty) Ltd  
 P O Box 1596, Cramerville, 2060, South Africa  
 Tel: +27 (11) 467-0945 Fax: +27 (11) 467-0978