

DRAFT BASIC ASSESSMENT REPORT

Proposed Development of a 132 kV Overhead Power
Line and Supporting Infrastructure for the Proposed
Vhuvhili Solar Photovoltaic Energy Facility, near
Secunda in the Mpumalanga Province

APPENDIX F

Public Participation

APPENDICES

Draft Basic Assessment Report: Proposed Development of a 132 kV Overhead Power Line and Supporting Infrastructure for the Proposed Vhuvhili Solar Photovoltaic Energy Facility, near Secunda in the Mpumalanga Province

Contents

F. 1: COPY OF SITE NOTICE BOARD - AFRIKAANS	1
F. 2: PROOF OF PLACEMENT OF SITE NOTICE BOARDS	4
F. 3: COPY OF THE CONTENT OF THE NEWSPAPER ADVERTISEMENT	9

APPENDICES

Draft Basic Assessment Report: Proposed Development of a 132 kV Overhead Power Line and Supporting Infrastructure for the Proposed Vhuvhili Solar Photovoltaic Energy Facility, near Secunda in the Mpumalanga Province

F. 1: COPY OF SITE NOTICE BOARDS - ENGLISH

NOTICE OF PUBLIC PARTICIPATION PROCESS FOR THE BASIC ASSESSMENT AND APPLICATIONS IN TERMS OF THE NATIONAL WATER ACT, THE MINERAL PETROLEUM RESOURCES DEVELOPMENT ACT AND THE NATIONAL HERITAGE RESOURCES ACT FOR THE PROPOSED DEVELOPMENT OF A 132 KV OVERHEAD POWER LINE AND ASSOCIATED ELECTRICAL GRID INFRASTRUCTURE TO SUPPORT THE PROPOSED VHUVHILI SOLAR PHOTOVOLTAIC ENERGY FACILITY, NEAR SECUNDA IN THE MPUMALANGA PROVINCE.

Notice is hereby given that Vhuvhili Solar RF (Pty) Ltd ("The Applicant") is proposing to develop a 132 kV overhead power line, which will extend approximately 12 km, and associated Electrical Grid Infrastructure (EGI) to support the proposed Vhuvhili Solar Photovoltaic (PV) Energy Facility (SEF) near Secunda, in the Govan Mbeki Local Municipality and the Gert Sibande District Municipality in the Mpumalanga Province. A Basic Assessment (BA) is being undertaken to assess the proposed 132 kV overhead power line and associated EGI which will transmit electricity from the on-site substation at the proposed Vhuvhili SEF to a switching substation at the proposed Mukondeleli Wind Energy Facility (WEF). From there the electricity will be fed into the Sasol grid at the Secunda Synfuels facility to produce green hydrogen, or alternatively the electricity will be fed into the national electrical grid as part of South Africa's Renewable Energy Independent Power Producer Procurement Programme. The project comprises associated infrastructure which includes pylons, busbar foundations and connections, access roads and temporary laydown areas. The proposed Vhuvhili SEF and on-site substation are subject to a separate Scoping and Environmental Impact Assessment (S&EIA) process (NEAS: MPP/EIA/0001063/2022). The proposed Mukondeleli WEF and on-site switching station are also subject to a separate S&EIA process (NEAS: MPP/EIA/0001099/2022).

The BA process assesses four alternative power line routings with a corridor width of 200 m (please refer to Figure 1). The following farm portions will be affected by the proposed Vhuvhili power line and associated EGI project:

- Portion 20 of Farm Grootvlei No. 293;
- Remaining Extent (RE) of Farm Grootvlei No. 584;
- RE of Farm Vlakspruit No.292;
- Portions 2, 3, 13, 14, 15, 16, 18 and 19 of Farm Vlakspruit No. 292;
- RE of Farm Knoppiesfontein No. 313;
- RE of Farm Knoppies No. 314;
- Portion 3, 6, 7, 8 and 9 of Farm Brandwacht No. 316;
- Portion 6, 10, 11 and 13 of Farm Bosjesspruit No. 291; and
- Portion 2 and 12 of Farm Tondershoek No. 317.

The proposed project triggers various activities listed in GN R327 (Listing Notice (LN) 1) and GN R324 (LN 3) under the National Environmental Management Act, 1998 (Act 107 of 1998), as amended (NEMA) EIA Regulations, 2014, as amended. GN R327 (LN1) Activity 11 serves as the main activity for the proposed project. Please note that comment regarding the proposed project will also be sought from the South African Heritage Resources Agency (SAHRA) in terms of the National Heritage Resources Act, 1999 (Act No. 25 of 1999). The BA process will also confirm the need for a Water Use Licence or General Authorisation (as applicable) in accordance with the National Water Act, 1998 (Act No. 36 of 1998), as amended. In addition, meaningful consultation is also required in terms of Section 53 of the Mineral Petroleum Resources Development Act, 2002 (Act No. 28 of 2002).

The Council for Scientific and Industrial Research (CSIR) has been appointed to undertake and manage the BA process for the proposed project on behalf of the Project Applicant. Should you be interested in registering as an Interested and/or Affected Party (I&AP) and to provide comments on the proposed project you are kindly requested to e-mail your name and contact details, with an indication of any direct, business, financial, personal or other interest which you may have in the application, to the Project Manager at the CSIR: Minnelise Levendal (Tel: 083 309 8159); E-mail: ems@csir.co.za (with "Vhuvhili EGI BA" as the subject line); Postal address: PO Box 320, Stellenbosch, 7599.

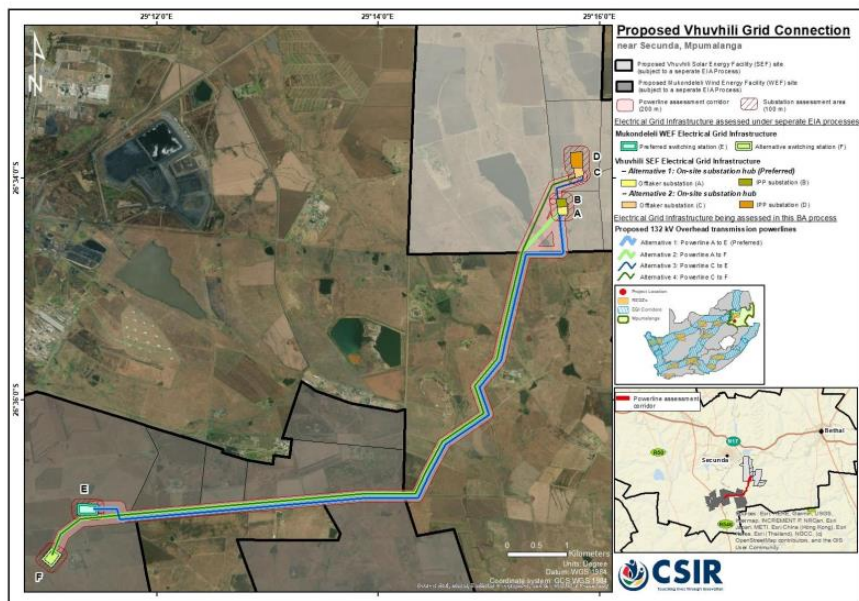


Figure 1: Layout map of the proposed four power line routing alternatives from the Vhuvhili SEF on-site substation to the Mukondeleli WEF switching station. The preferred infrastructure is power line routing Alternative 1 which connects Vhuvhili SEF on-site substation hub A-B to the Mukondeleli WEF switching station E. The proposed power line routing alternative to be constructed will be determined based on the final authorised location of the proposed Vhuvhili SEF on-site substation and the proposed Mukondeleli WEF switching station.

APPENDICES

Draft Basic Assessment Report: Proposed Development of a 132 kV Overhead Power Line and Supporting Infrastructure for the Proposed Vhuvhili Solar Photovoltaic Energy Facility, near Secunda in the Mpumalanga Province

F. 2: COPY OF SITE NOTICE BOARDS – AFRIKAANS

KENNISGEWING VAN OPENBARE PUBLIEKE DEELNAME PROSES VIR DIE BASIESE EVALUERINGSPROSES IN TERME VAN DIE NASIONALE OMGEWINGSBESTUURSWET EN AANSOEKE IN TERME VAN DIE NASIONALE WATER WET, DIE WET OP NASIONALE ERFENISHULPBRONNE EN DIE WET OP DIE ONTWIKKELING VAN MINERALE EN PETROLEUM HULPBRONNE VIR DIE VOORGESTELDE ONTWIKKELING VAN 'N 132 KV KRAGLYN EN MEEGAANDE ELEKTRIESE NETWERK INFRASTRUKTUUR (EGI) OM DIE VOORGESTELDE VHUVHILI PHOTOVOLTAÏSE (PV) SON ENERGIE PROJEK TE ONDERSTEUN, NABY SECUNDA IN DIE MPUMALANGA PROVINSIE.

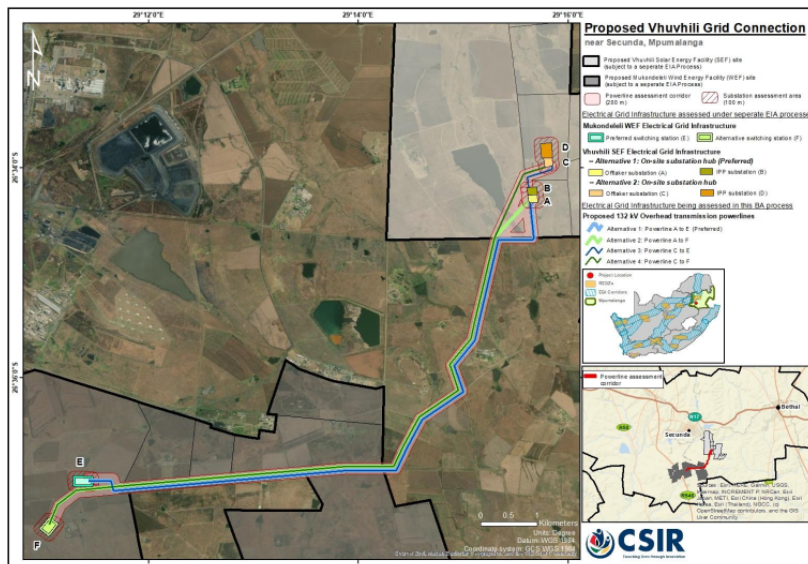
Hiermee word kennis gegee dat Vhuvhili Solar RF Eiendoms Beperk ("Die Aansoeker") van voorneme is om 'n 132 kV kraglyn, wat ongeveer 12 km sal strek, en meegaande EGI te ontwikkel om die voorgestelde Vhuvhili PV projek te ondersteun, naby Secunda in die Govan Mbeki Plaaslike Munisipaliteit en die Gert Sibande Distrikmunisipaliteit in die Mpumalanga Provinsie. 'n Basiese Evalueringproses (BA) word onderneem om die voorgestelde 132 kV oorhoofse kraglyn en meegaande EGI te assesseer wat elektrisiteit sal vervoer vanaf die voorgestelde Vhuvhili PV substasie na die substasie by die voorgestelde Mukondeleli Wind Energie Fasiliteit (WEF). Vanaf die Mukondeleli WEF substasie sal die elektrisiteit in die elektriese netwerk by Sasol Secunda gevoer word vir die vervaardiging van groen Waterstof ("green Hydrogen"), of dit sal in die nasionale elektriese netwerk gevoer word as deel van Suid-Afrika se hernubare energie program. Die voorgestelde Vhuvhili PV fasiliteit en meegaande substasie is onderhewig aan 'n aparte Bestek en Omgewingsimpakstudie ("EIA") (NEAS: MPP/EIA/0001063/2022). Die voorgestelde Mukondeleli WEF en meegaande substasie is ook onderhewig aan 'n aparte EIA (NEAS: MPP/EIA/0001099/2022).

Die BA proses evalueer vier alternatiewe kraglynroetes met 'n korridor breedte van 200 m (verwys asseblief na Figuur 1). Die volgende plaas gedeeltes sal geaffekteer word deur die voorgestelde Vhuvhili kraglyn en EGI projek:

- Gedeelte 20 van Plaas Grootvlei Nr. 293;
- Restant (RES) van Plaas Grootvlei Nr. 584;
- RES van Plaas Vlakspruit Nr.292;
- Gedeeltes 2, 3, 13, 14, 15, 16, 18 en 19 van Plaas Vlakspruit Nr. 292;
- RES van Plaas Knoppiesfontein Nr. 313;
- RES van Plaas Knoppies Nr. 314;
- Gedeeltes 3, 6, 7, 8 en 9 van Plaas Brandwacht Nr. 316;
- Gedeeltes 6, 10, 11 en 13 van Plaas Bosjesspruit Nr. 291; en
- Gedeeltes 2 en 12 van Plaas Tondershoek Nr. 317.

Die voorgestelde projek aktiveer verskeie aktiwiteite gelys in GN R327 (LN 1) en GN R324 (LN 3) onder die Nasionale Omgewingsbestuurswet, 1998 (Wet Nr.107 van 1998), soos gewysig (NEMA) Omgewingsimpakstudie Regulasies, 2014, soos gewysig. Aktiwiteit 11 van GN R327 (LN1) dien as die hoof aktiwiteit vir die voorgestelde kraglyn projek. Let wel, kommentaar op die voorgestelde projek sal ook versoek word vanaf die Suid Afrikaanse Erfenis Bronne Genootskap ["South African Heritage Resources Agency (SAHRA)"] ingevolge die Wet op Nasionale Erfenishulpbronne, 1999 (Wet Nr. 25 van 1999). Die BA studie sal ook bevestig indien 'n aansoek ingedien moet word vir 'n Waterverbruikers Lisensie of 'n Algemene Goedkeuring in terme van die Nasionale Water Wet, 1998 (Wet Nr. 36 van 1998), soos gewysig. Betekenisvolle konsultasie sal ook onderneem word soos vereis in terme van Afdeling 53 van die Wet op die Ontwikkeling van Minerale en Petroleum Hulpbronne, 2002 (Wet Nr. 28 van 2002) ("MPRDA").

Die Wetenskaplike Nywerheids- en Navorsingsraad (WNNR) ("CSIR") is aangestel om die BA proses te behartig en te bestuur vir die voorgestelde Vhuvhili kraglyn projek namens die aansoeker. Sou u belangstel om te registreer as 'n Geïnteresseerde en/of Belanghebbende Party (G&BP), en om kommentaar te lewer op die voorgestelde projek, word u vriendelik versoek om u naam en kontakbesonderhede te epos, asook 'n aanduiding van enige direkte besigheid, finansiële, persoonlike of ander redes vir u moontlike belangstelling in die aansoek, na die Projek Bestuurder by die WNNR: Minnelise Levendal (Selfoon nr: 083 309 8159); e-pos: ems@csir.co.za (met "Vhuvhili Kraglyn BA" as die onderwerp); Pos adres: Posbus 320, Stellenbosch, 7599.



Figuur 1: Ligging van die voorgestelde vier alternatiewe kraglynroetes vanaf die Vhuvhili SEF-substasie na die Mukondeleli WEF-substasie. Die voorkeur infrastruktuur is kraglyn roete Alternatief 1 wat vanaf Vhuvhili SEF-substasie A-B na die Mukondeleli WEF-substasie E strek. Die voorgestelde kraglyn roete alternatief wat gebou gaan word sal gebaseer word op die ligging van die voorgestelde Vhuvhili SEF-substasie en die voorgestelde Mukondeleli WEF-substasie wat goedgekeur gaan word.



APPENDICES

Draft Basic Assessment Report: Proposed Development of a 132 kV Overhead Power Line and Supporting Infrastructure for the Proposed Vhuvhili Solar Photovoltaic Energy Facility, near Secunda in the Mpumalanga Province

F. 3: COPY OF SITE NOTICE BOARDS – ISIZULU

ISAZISO SOQHUBO LOKUBAMBA IQHAZA NJENGOMPHAKATHI NGOKUHLOLA NGOKWEZEMVELO KANYE NEZICELO MAYELANA NOMTHETHO KAZWELONKE WAMANZI, UMTHETHO WOKUTHUTHUKISWA KWEZINCEBISO ZIKAPETROLI KANYE NOMTHETHO KAZWELONKE WEZINCEDO ZAMAGUGU NGOKWAKHIWA KWENTAMBO KAGESI EHLONGOZWAYO ENGU 132 KV KANYE NENGQALASIZINDA YEGRIDI KAGESI EHLANGANISIWE UKUSEKELA ISIKHUNGO ESIPHEHLA UGESI NGELANGA, IVHUVHILI, EHLONGOZIWE, DUZE NE-SECUNDA ESIFUNDAZWENI SEMPUMALANGA.

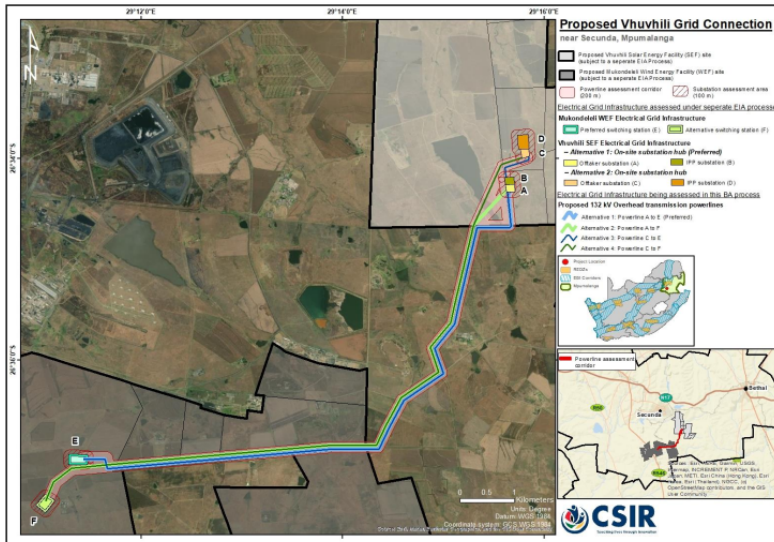
Isaziso siyanikezwa ngokuba iVhuvhili Solar RF (Pty) Ltd ("Umfakisicelo") uhlongoza ukwakha ulayini odlulisa ugesi ofika kwinani elingu 132 kV, ozoba amakhilomitha angu 12, kanye nengqalazizinda yegradi kagesi (EGI) ehlanganisiwe ukusekela isikhungo esiphehla ugesi ngelanga, i-Vhuvhili Solar Photovoltaic (PV) Energy Facility (SEF), ehlongoziwe eduze nase Secunda, kuMasipala Wasekhaya i-Govan Mbeki kanye noMasipala Wesifunda sase-Gert Sibande esifundazweni saseMpumalanga. Kwenziwa uhloko ngokwemvelo okuyisisekelo (BA) ukuze kuhlolwe intambo kagesi ehlongozwayo engu-132 kV kanye ne-EGI ehambisanayo ezodlulisa ugesi usuka esiteshini se-Vhuvhili SEF ehlongoziwe uyiswe esiteshini esishintshayo esikhungweni esihlongozwayo i-Mukondeleli Wind Energy Facility (WEF). Ukusuka lapho ugesi uzofakwa kugrudi yakwa-Sasol esikhungweni sase-Secunda Synfuels ukuze kukhazimise i-hydrogen eluhlaza, noma okunye ugesi uzofakwa kugrudi kagesi kazwelonke njengengxenywe yoHlelo Lokutholakala Kwamandla Avuselelekayo Kubakhiqizi Bagesi Abazimele lwaseNingizimu Afrika. Le phrojekthi ihlanganisa ingqalazizinda ehambisanayo ehlanganisa izigxobo zikagesi, izintambo zokuxhuma ugesi, imigwaqo yokungena kanye nezindawo zesikhathana zokubeka imishini nezimpahla. I-Vhuvhili SEF ehlongozwayo kanye nesiteshi sokushinsha kungaphansi kwenqubo ehlukele yokubika ngemithelela yezemvelo (S&EIA) (NEAS: MPP/EIA/0001063/2022). I-WEF yaseMukondeleli ehlongozwayo kanye nesiteshi sokushintshwa esisendaweni nakho kungaphansi kwenqubo ehlukele ye-S&EIA (NEAS: MPP/EIA/0001099/2022).

Inqubo ye-BA ihlola ezinye izindlela ezine zezintambo zikagesi ezinobubanzi obungama-200 m (sicela ubhekisele kuMfanekiso 1). Izingxenywe zepulazi ezilandelayo zizothintwa intambo kagesi yakwa-Vhuvhili ehlongozwayo kanye nephrojekthi ye-EGI ehlobene:

- Ingxenye 20 yePulazi 293;
- Izinga Elisele (RE) lePulazi Grootvlei 584;
- RE lePulazi Vlakspuit 292;
- Izinxenye 2, 3, 13, 14, 15, 16, 18 kanye no 19 zePulazi Vlakspuit 292;
- RE lePulazi Knoppiesfontein 313;
- RE lePulazi Knoppies 314;
- Izinxenye 3, 6, 7, 8 kanye no 9 zePulazi Brandwacht 316;
- Izinxenye 6, 10, 11 kanye no 13 zePulazi Bosjesspruit 291; kanye
- Ingxenye 2 kanye no 12 zePulazi Tondershoek 317.

Leprojekthi ithinta uhlu lwezikhombo ezahlukahlukeno ngokoMthetho Wokuphathwa Kwemvelo Kazwelonke (uMthetho 107 ka-1998) (NEMA) (njengoba uchitshiyelwe), ngokweMthethonqubo yokuHlola Umthelela kwezeMvelo ka 2014 (2014 EIA Regulations), njengoba uchitshiyelwe. Isihlu esiyinhloko kuleprojekthi ehlongozwayo yileli sika GN R327 (LN1) Umsebenzi we-11. Uyaziswa ukuba imibono izocelwa kuMnyango Wamagugu ngokoMthetho Wemithombo Yamagugu Kazwelonke (uMthetho 25 ka-1999). Uqhubo lwe BA luzophinde luqinisekise isidingo sokuGunyazwa Okujwayelekile (GA) noma seLayisense Yokusebenzisa Amanzi (WUL) ngokoMthetho Wamanzi Kazwelonke ka-1998 (uMthetho 36 ka-1998), njengoba uchitshiyelwe. Ukwengeza, ukubonisana okuphusile nakho kuyadingeka ngokweSigaba 53 soMthetho Wokuthuthukiswa Kwemithombo YeziMbiwa Phansi, ka-2002 (uMthetho 28 ka-2002)

I-Council for Scientific and Industrial Research (CSIR) iqokwe ukuba iphathe inqubo ye-BA yephrojekthi ehlongozwayo egameni lomfakisicelo wephrojekthi. Abantu abafisa ukubhalisa ngokusemthethweni njengababambe iqhaza ukuze babeke imibono yabo mayelana neprojekthi ehlongozwayo bayacelwa ukuba bathumele imininingwane yabo egcwele kanye nenkomba yanoma iyiphi intshisekelo eqondile, yebhizinisi, yezezimali, yomuntu siqu noma enye intshisekelo ongaba nayo esicelweni ku-Mphathi woQhubo e-CSIR: Minnelise Levendal (Inombolo: 083 309 8159); i-Imeyili: ems@csir.co.za (ubhale u "Vhuvhili EGI BA" njengesihloko); Ikheli: PO Box 320, Stellenbosch, 7599.



Umfanekiso 1: Imephu ekhombisa izindlela ezine zomzila wamandla kagesi ukusuka esiteshini se Vhuvhili SEF ukuya esiteshini esishintshayo se-WEF iMukondeleli. Ingqalazizinda ekhetwayo umzila kagesi i-Alternative 1 exhumanisa i-Vhuvhili SEF esiteshini se-Vhuvhili A-B esiteshini esishintshayo se-WEF saseMukondeleli E. Enye indlela ehlongozwayo yomzila kagesi ezokwakhwa izonqunywa ngokusekelwe endaweni yokugcina egunyaziwe yesiteshi se-Vhuvhili SEF ehlongozwayo kanye nesiteshi sokushintsha saseMukondeleli WEF esihlongozwayo



APPENDICES

Draft Basic Assessment Report: Proposed Development of a 132 kV Overhead Power Line and Supporting Infrastructure for the Proposed Vhuvhili Solar Photovoltaic Energy Facility, near Secunda in the Mpumalanga Province

F. 4: PROOF OF PLACEMENT OF SITE NOTICE BOARDS

Site Notice Board Placement for the Proposed Project

#	Locality/ Description	Co-ordinates
1	On the fence at the entrance to Remaining Extent of Grootvlei Farm No.584, along the D823 secondary road which is also a proposed access point to the Vhuvhili SEF.	26°34'41.27"S; 29°14'17.40"E
2	On the fence at the entrance to farm Portion 13 of Vlakspruit Farm No. 292, along the D619 secondary road which is also a proposed access point to the Vhuvhili SEF.	26°35'29.66"S; 29°16'2.01"E

APPENDICES

Draft Basic Assessment Report: Proposed Development of a 132 kV Overhead Power Line and Supporting Infrastructure for the Proposed Vhuvhili Solar Photovoltaic Energy Facility, near Secunda in the Mpumalanga Province

#	Locality/ Description	Co-ordinates
3	On the fence along the D619 secondary road, approximately at the mid-point of the power line corridor for Alternative 3.	26°36'9.27"S; 29°14'57.88"E
4	On the fence along the D823 secondary road, approximately at the mid-point of the power line corridor for Alternatives 1, 2 and 4.	26°36'52.15"S; 29°13'52.09"E
5	On the fence along the D823 secondary road, approximately at the end-point of the power line corridor for Alternatives 1 and 3.	26°37'10.34"S; 29°11'19.35"E

APPENDICES

Draft Basic Assessment Report: Proposed Development of a 132 kV Overhead Power Line and Supporting Infrastructure for the Proposed Vhuvhili Solar Photovoltaic Energy Facility, near Secunda in the Mpumalanga Province

#	Locality/ Description	Co-ordinates
6	On the fence along the D823 secondary road, approximately at the end-point of the power line corridor for Alternatives 2 and 4.	26°37'27.14"S; 29°11'5.14"E
7	Notice board inside the Secunda Public Library on 1 Louwrens Muller St, Secunda.	26°30'14.17"S; 29°11'5.05"E

APPENDICES

Draft Basic Assessment Report: Proposed Development of a 132 kV Overhead Power Line and Supporting Infrastructure for the Proposed Vhuvhili Solar Photovoltaic Energy Facility, near Secunda in the Mpumalanga Province

#	Locality/ Description	Co-ordinates
8	Notice Board inside the Govan Mbeki Local Municipal Offices on Horwood Street, Secunda.	26°30'16.84"S; 29°11'5.18"E
 <p>19 Oct 2022 14:58:58</p> <p>19 Oct 2022 14:59:02</p> <p>1 Louwrens Muller Street Secunda Gert Sibande District Municipality Mpumalanga</p>  <p>19 Oct 2022 14:33:05</p> <p>1 Louwrens Muller Street Secunda Gert Sibande District Municipality Mpumalanga</p>		
9	Notice board inside Secunda Central shopping mall on the Corner of Walter Sisulu Road and Oliver Tambo Drive, Secunda.	26°30'20.65"S; 29°10'57.33"E
 <p>19 Oct 2022 15:37:22</p>		

APPENDICES

Draft Basic Assessment Report: Proposed Development of a 132 kV Overhead Power Line and Supporting Infrastructure for the Proposed Vhuvhili Solar Photovoltaic Energy Facility, near Secunda in the Mpumalanga Province

F. 5: COPY OF THE CONTENT OF THE NEWSPAPER ADVERTISEMENT

NOTICE OF PUBLIC PARTICIPATION PROCESS FOR THE BASIC ASSESSMENT IN TERMS OF THE NATIONAL ENVIRONMENTAL MANAGEMENT ACT AND APPLICATIONS IN TERMS OF THE NATIONAL WATER ACT, THE MINERAL PETROLEUM RESOURCES DEVELOPMENT ACT AND THE NATIONAL HERITAGE RESOURCES ACT FOR THE PROPOSED DEVELOPMENT OF A 132 KV OVERHEAD POWER LINE AND ASSOCIATED ELECTRICAL GRID INFRASTRUCTURE (EGI) TO SUPPORT THE PROPOSED VHUVHILI SOLAR PHOTOVOLTAIC ENERGY FACILITY (SEF), NEAR SECUNDA IN THE MPUMALANGA PROVINCE.

Notice is hereby given that Vhuvhili Solar RF (Pty) Ltd ("The Applicant") is proposing to develop a 132 kV overhead power line, which will extend approximately 12 km, and associated EGI to support the proposed Vhuvhili SEF near Secunda, in the Govan Mbeki Local Municipality and the Gert Sibande District Municipality in the Mpumalanga Province. A Basic Assessment (BA) is being undertaken to assess the proposed 132 kV overhead power line and associated EGI which will transmit electricity from the proposed Vhuvhili SEF to the proposed Mukondeleli Wind Energy Facility (WEF). From there the electricity will be fed into the Sasol grid at the Secunda Synfuels facility to produce green hydrogen, or alternatively the electricity will be bid to feed into South Africa's national electrical grid. The project comprises associated infrastructure which includes pylons, busbar foundations and connections, access roads and temporary laydown areas. The proposed Vhuvhili SEF and on-site substation are subject to a separate Scoping and Environmental Impact Assessment (S&EIA) process (NEAS: MPP/EIA/0001063/2022). The proposed Mukondeleli WEF and on-site switching station are also subject to a separate S&EIA process (NEAS: MPP/EIA/0001099/2022).

The farm portions to be affected by the proposed Vhuvhili power line and associated EGI project are: Portion 20 of Farm Grootvlei No. 293; Remaining Extent (RE) Farm Grootvlei No. 584; RE of Farm Vlakspruit No.292; Portions 2, 3, 13, 14, 15, 16, 18 and 19 of Farm Vlakspruit No. 292; RE of Farm Knoppies No. 314; Portion 3 of Farm Brandwacht No. 316; Portion 6, 10, 11 and 13 of Farm Bosjesspruit No. 291; and Portion 2 and 12 of Farm Tondershoek No. 317.

The proposed project triggers various activities listed in GN R327 (Listing Notice (LN) 1) and GN R324 (LN 3) under the National Environmental Management Act, 1998 (Act 107 of 1998), as amended (NEMA) EIA Regulations, 2014, as amended. GN R327 (LN1) Activity 11 serves as the main activity for the proposed project. Please note that comment regarding the proposed project will also be sought from the South African Heritage Resources Agency (SAHRA) in terms of the National Heritage Resources Act, 1999 (Act No. 25 of 1999). The BA process will also confirm the need for a Water Use Licence or General Authorisation (as applicable) in accordance with the National Water Act, 1998 (Act No. 36 of 1998), as amended. In addition, meaningful consultation is also required in terms of Section 53 of the Mineral Petroleum Resources Development Act, 2002 (Act No. 28 of 2002).

The Council for Scientific and Industrial Research (CSIR) has been appointed to undertake and manage the BA process for the proposed project on behalf of the Project Applicant. **Interested and/or Affected Parties (I&APs) are hereby notified of the release of the Draft Basic Assessment Report (DBAR) for the proposed project for a 30-day commenting period, which will extend from 14 November 2022 to 14 December 2022.** The DBAR can be downloaded from the following website: <https://www.csir.co.za/environmental-impact-assessment>

Should you wish to register as an I&AP and to provide comments on the DBAR, you are kindly requested to send your name and contact details, with an indication of your interest in the application, to the Project Manager at the CSIR: Minnelise Levendal, E-mail: ems@csir.co.za (with "Vhuvhili EGI BA" as the subject line); Postal address: PO Box 320, Stellenbosch, 7599, or call +27 83 309 8159. Future correspondence relating to this BA process will be distributed to all registered I&APs.

