

LOCAL STUDIO

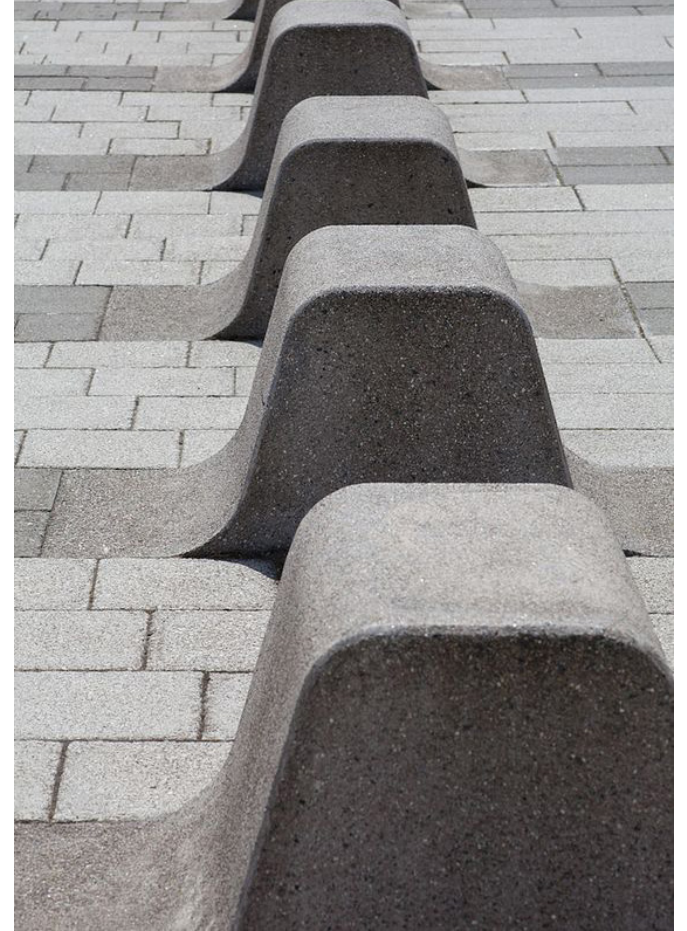
INTERACTIVE AFRICA | ARCH FOR AN ARCH | FOR APPROVAL | 2017.06.01

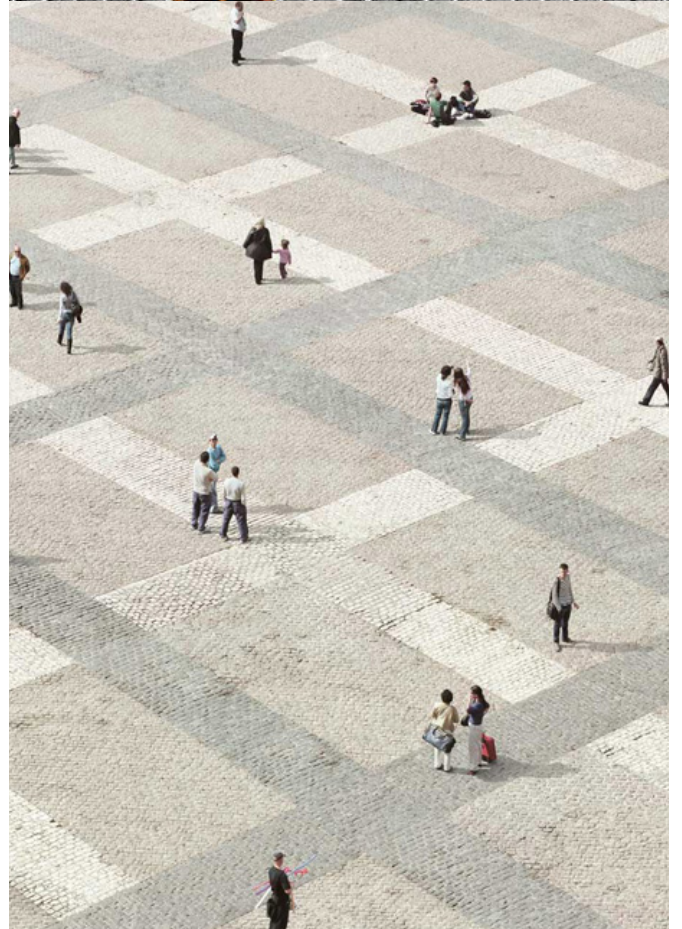
Snøhetta 

 interactive africa



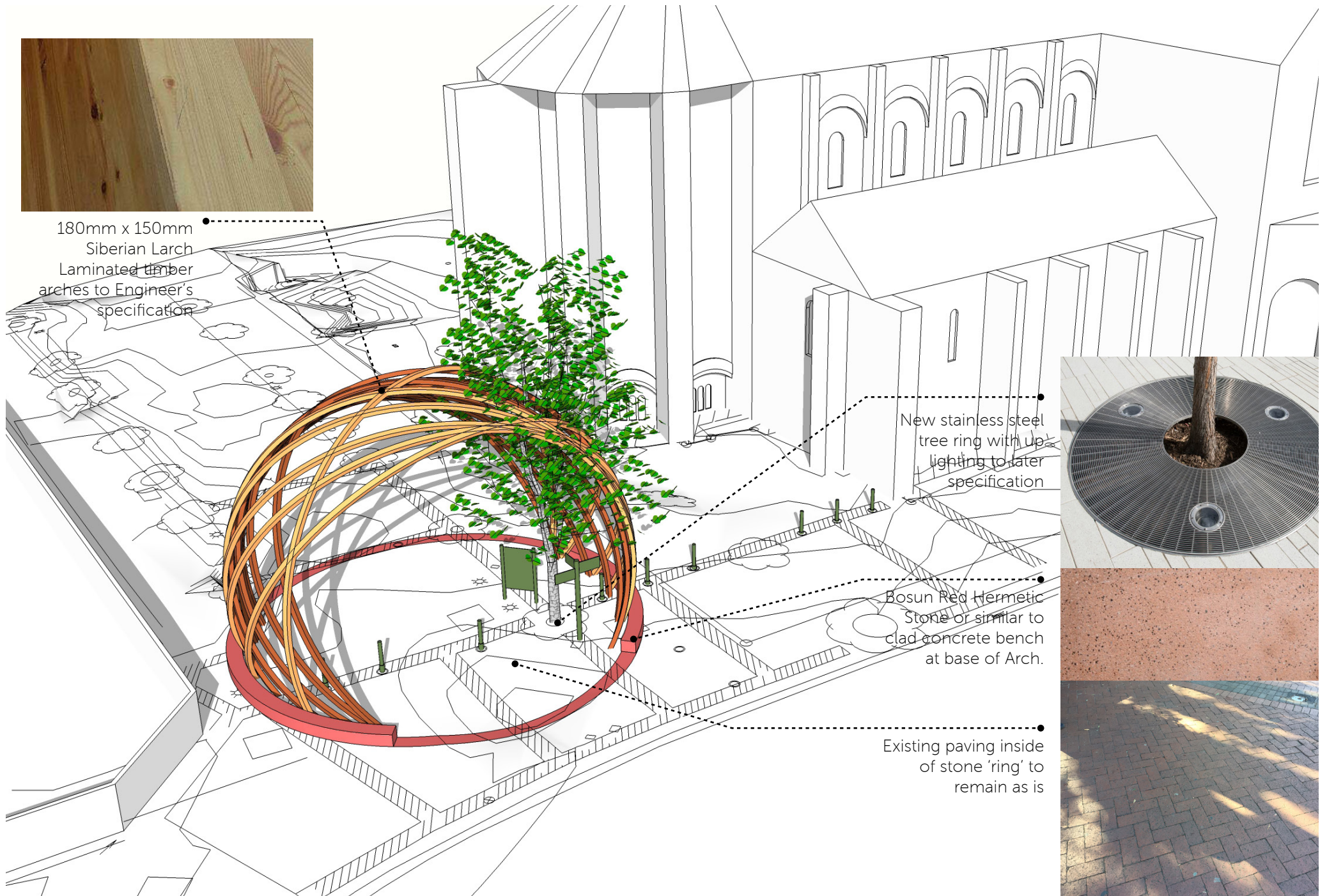








180mm x 150mm
Siberian Larch
Laminated timber
arches to Engineer's
specification



New stainless steel
tree ring with up
lighting to later
specification

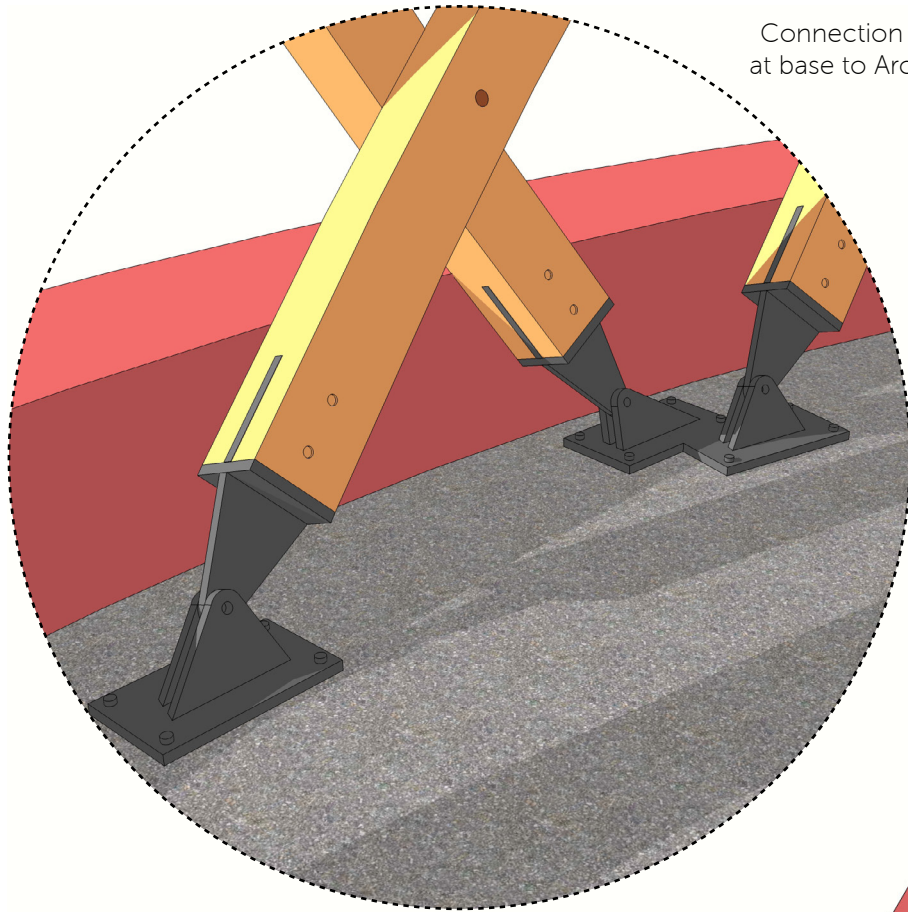


Bosun Red Hermetic
Stone or similar to
clad concrete bench
at base of Arch.

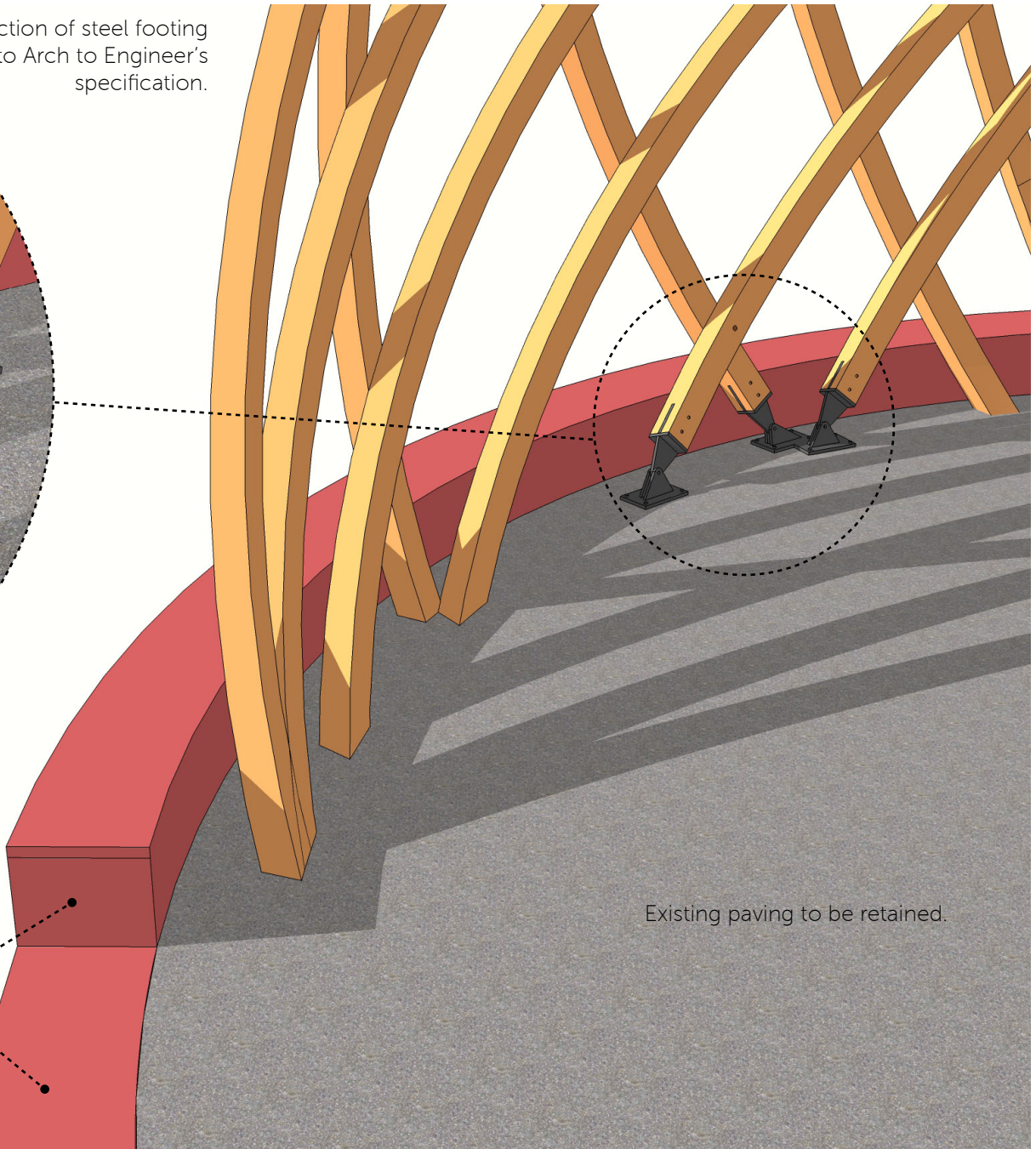


Existing paving inside
of stone 'ring' to
remain as is





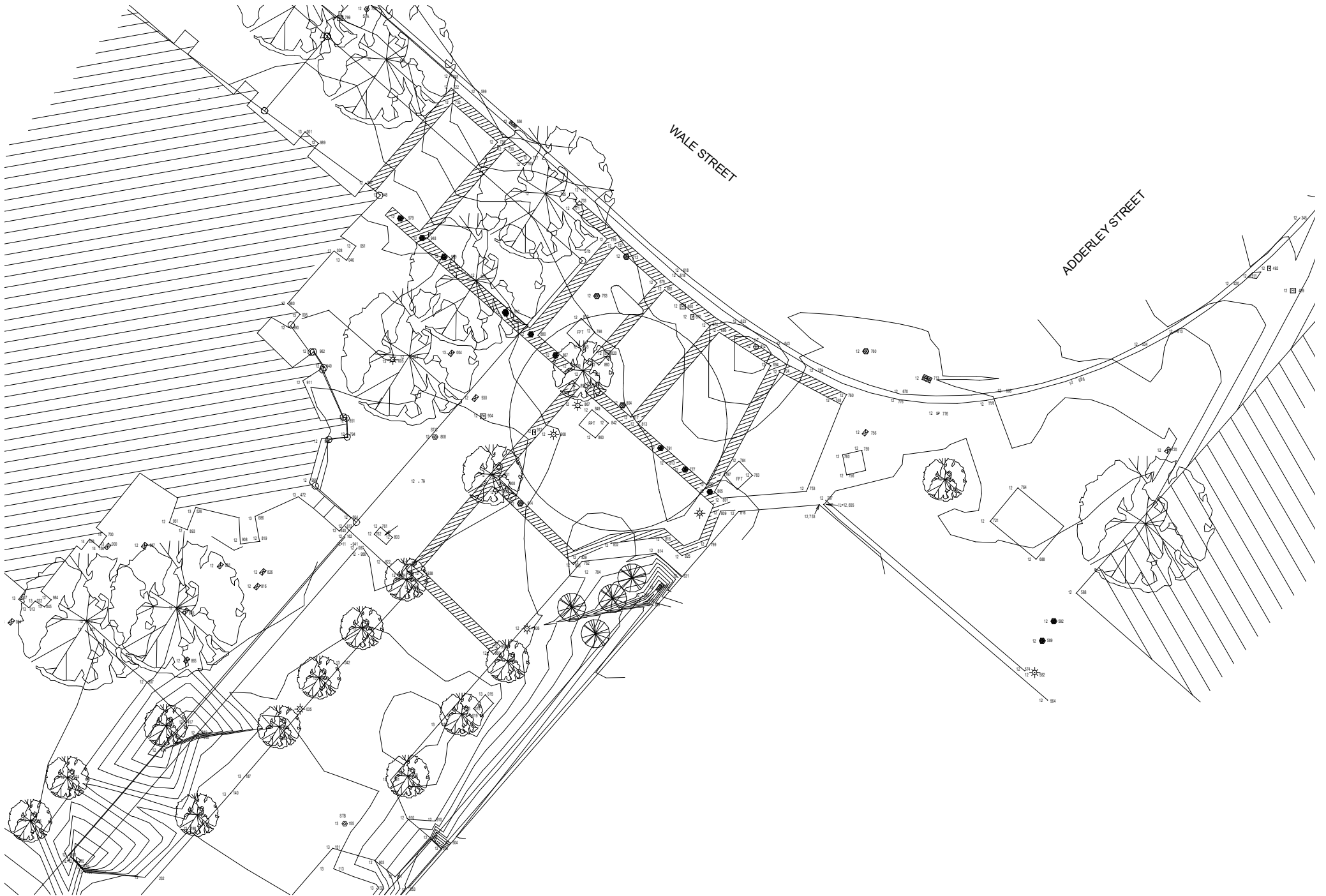
Connection of steel footing at base to Arch to Engineer's specification.

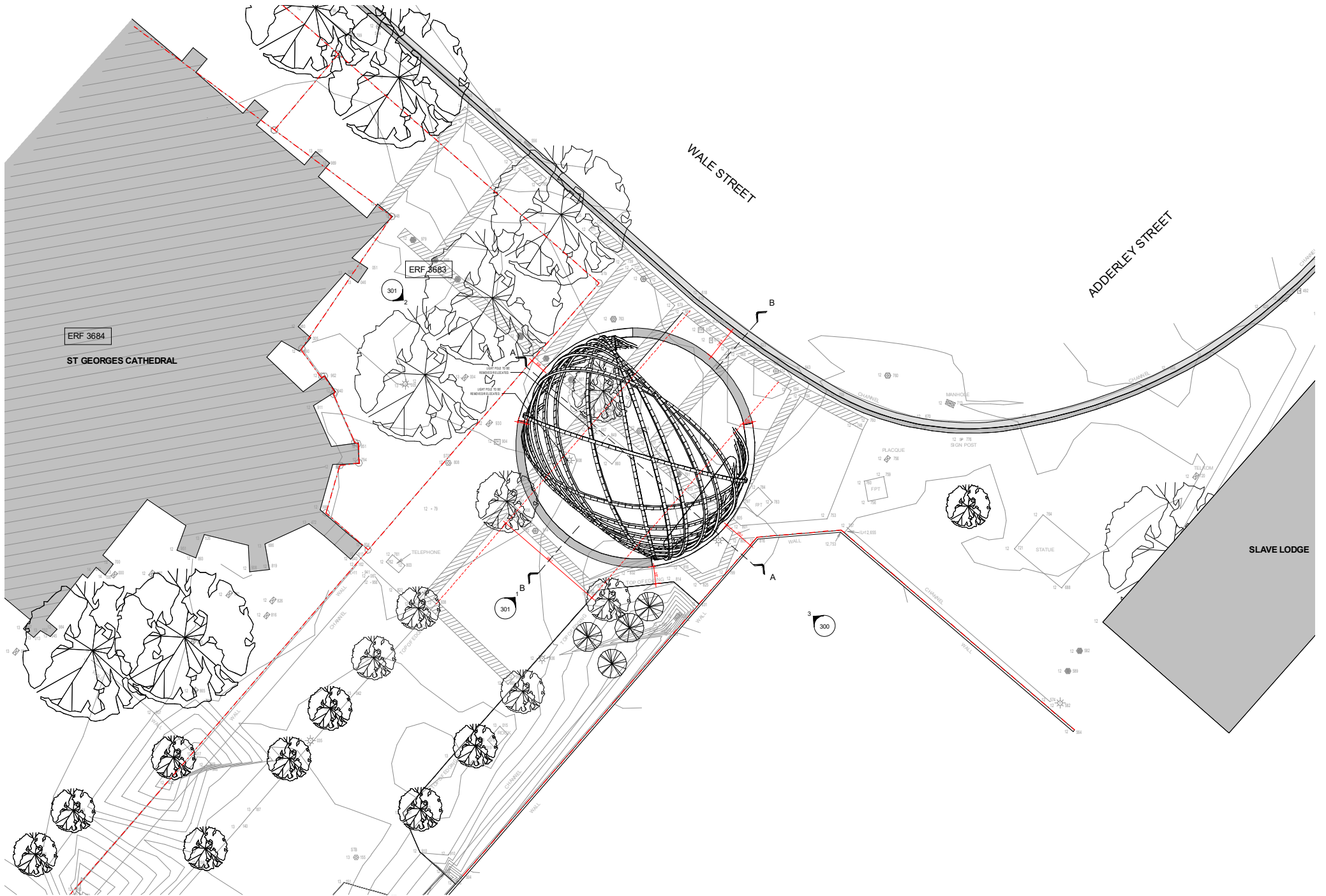


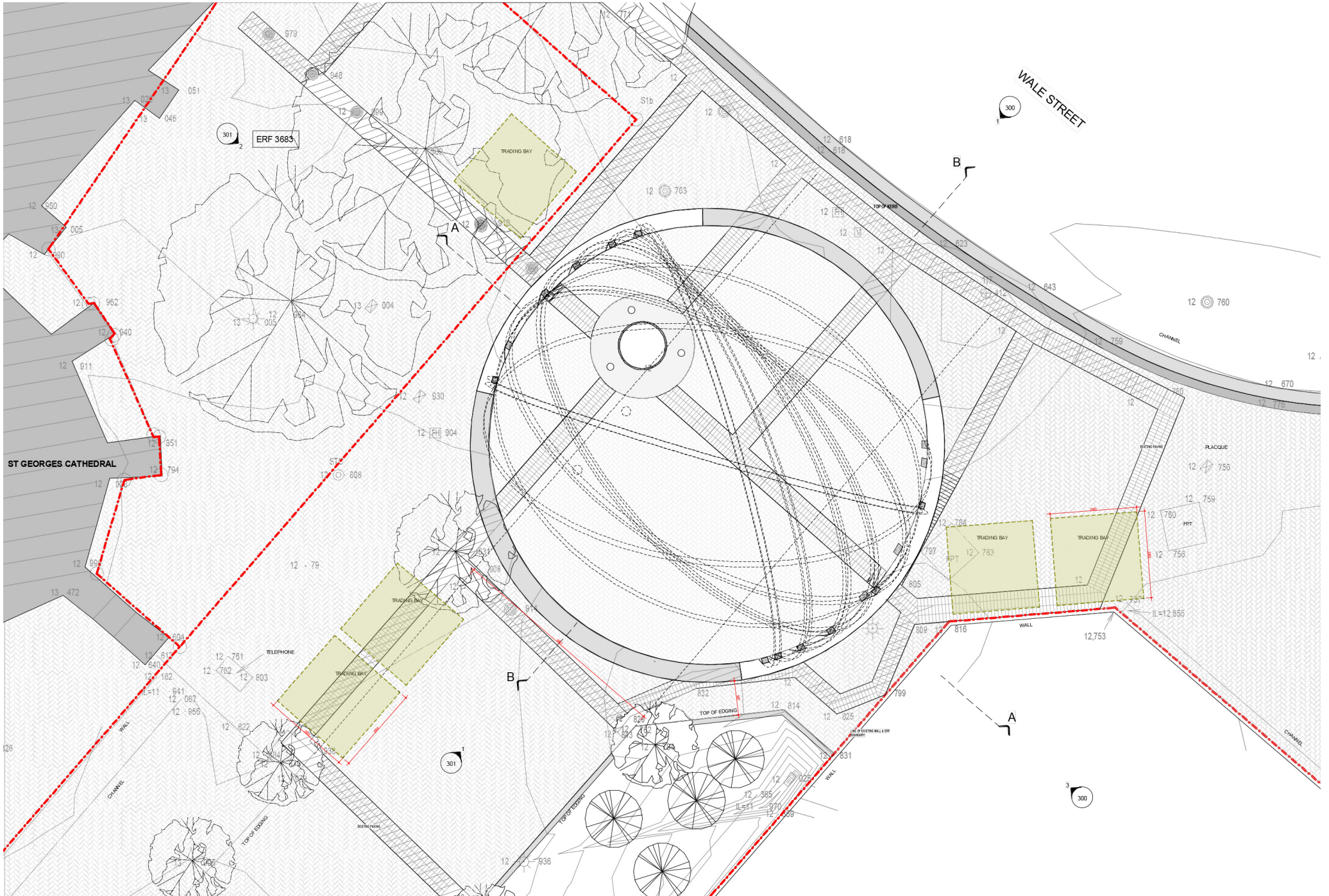
Bosun Red Hermetic Stone or similar to clad concrete bench at base of Arch. Bench to act as public seating as well as protection in the form of an impact bollard at the base of the Arch due to the high impact zone.

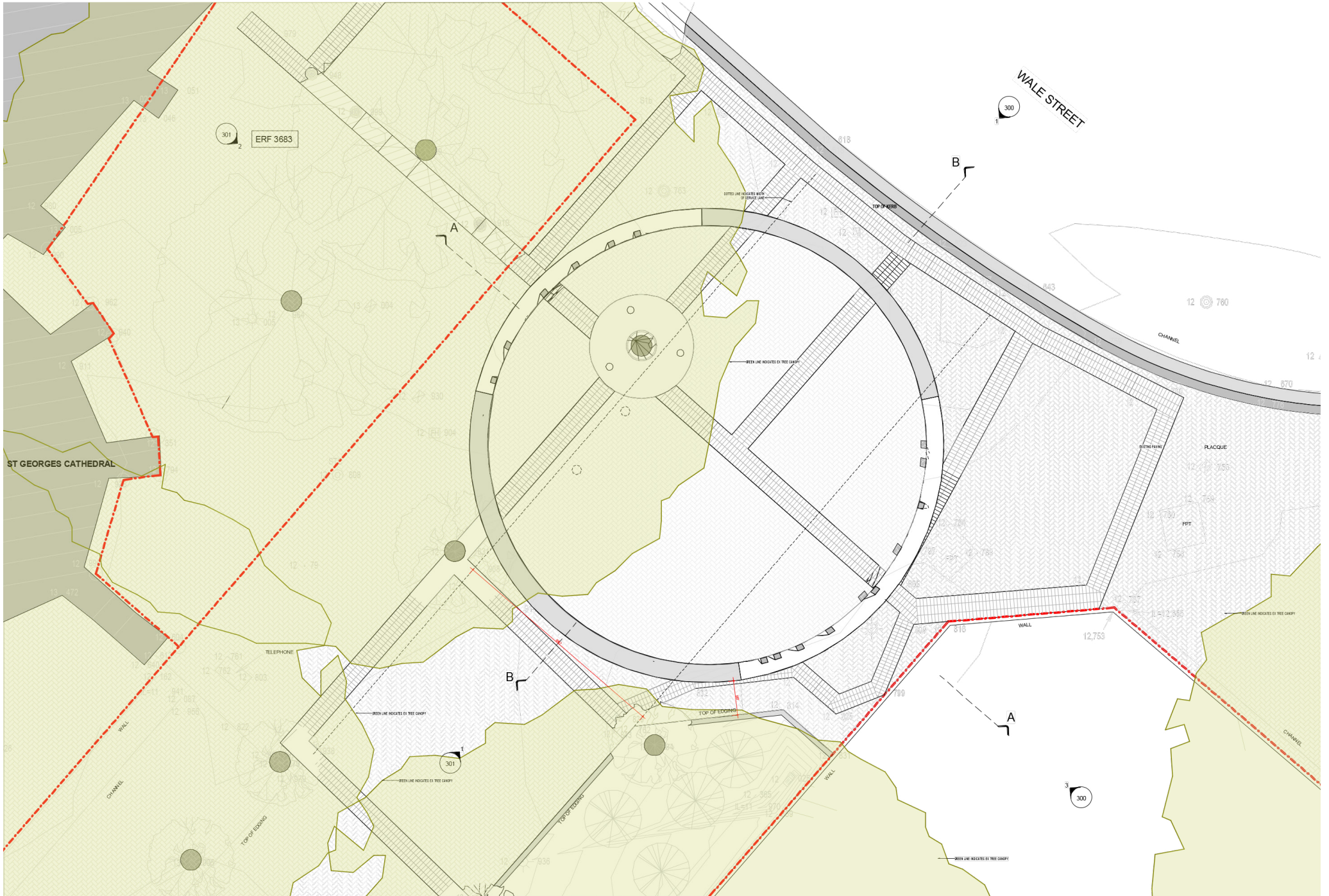
Bosun Red Hermetic Stone to enclose footprint of the Arch. Existing paving to be modified to accommodate this.

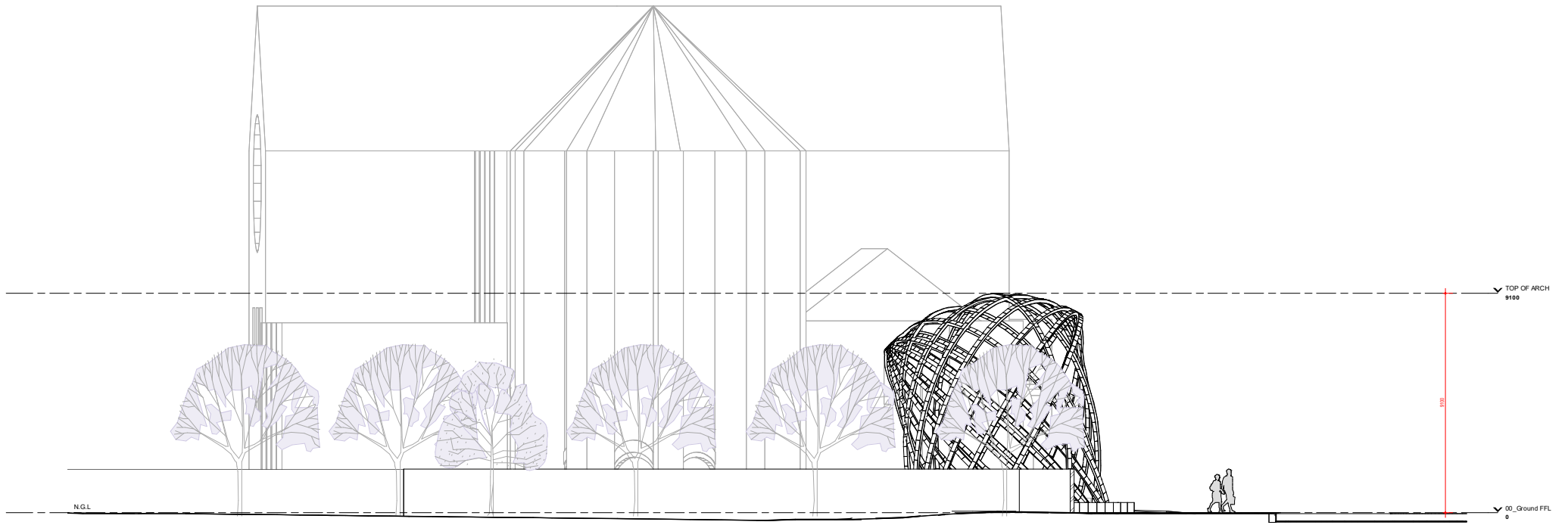
Existing paving to be retained.



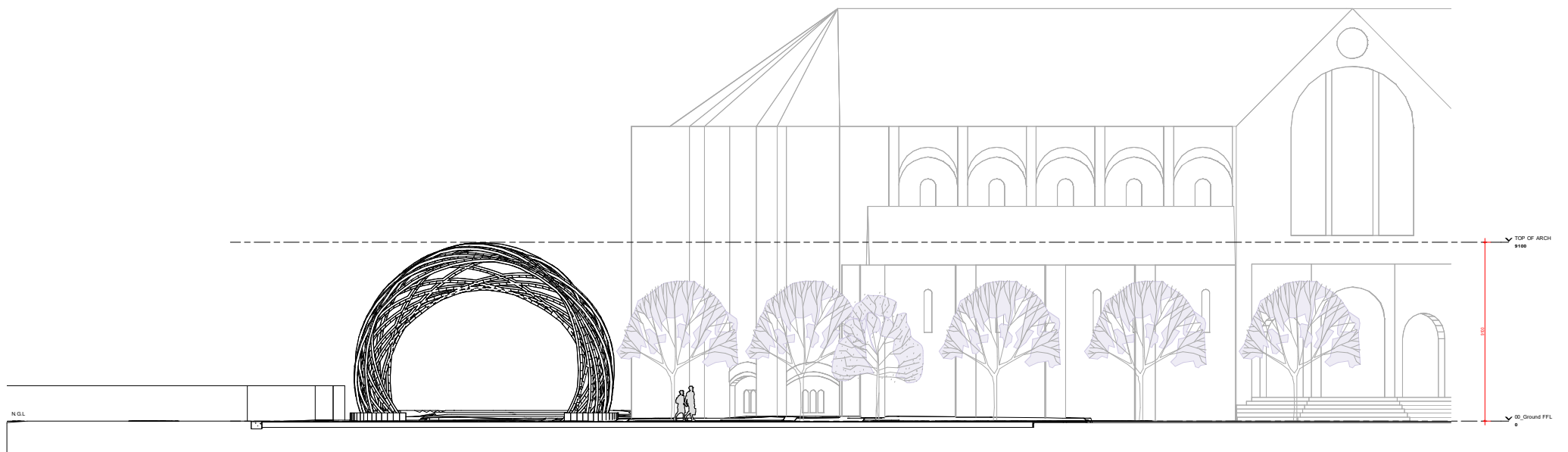




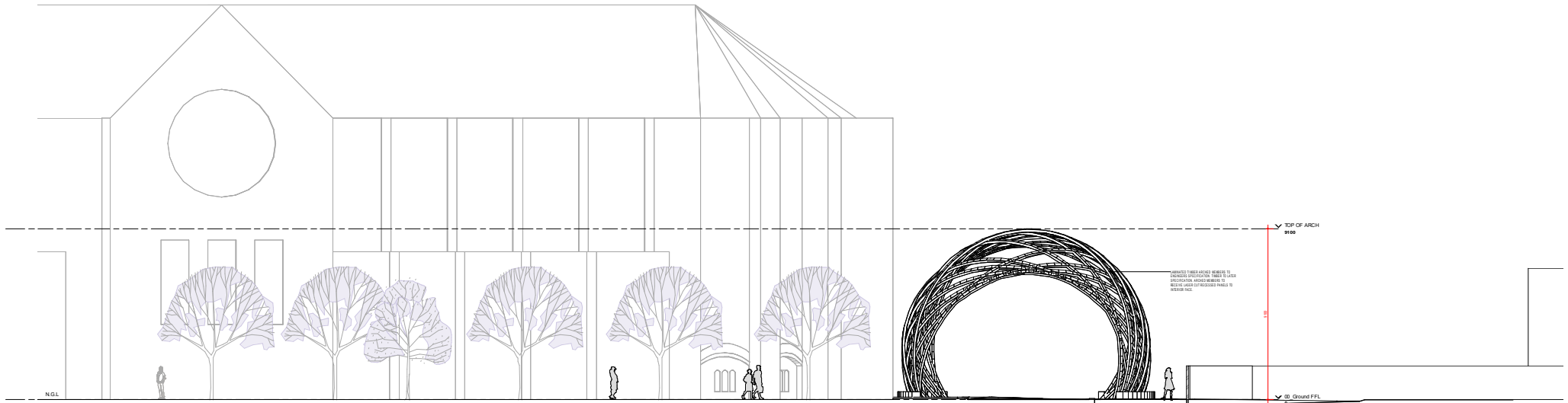




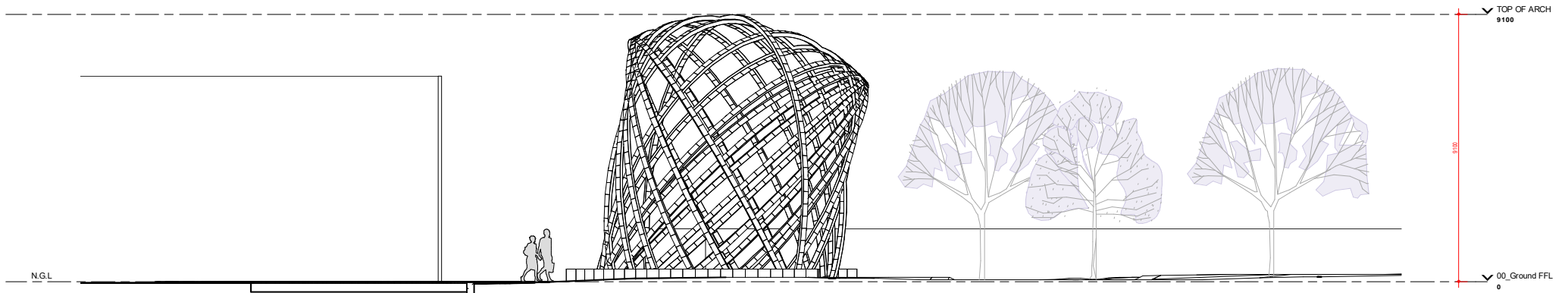
EAST ELEVATION



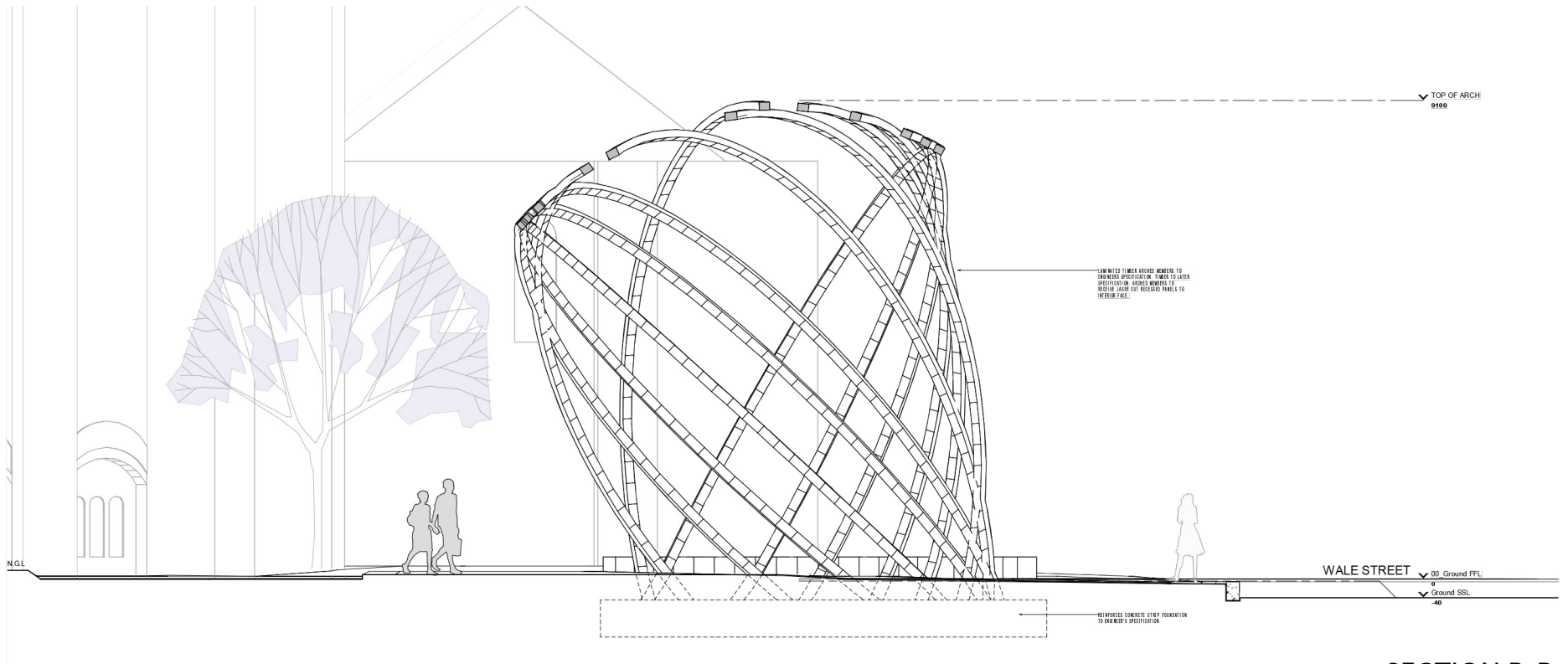
NORTH ELEVATION



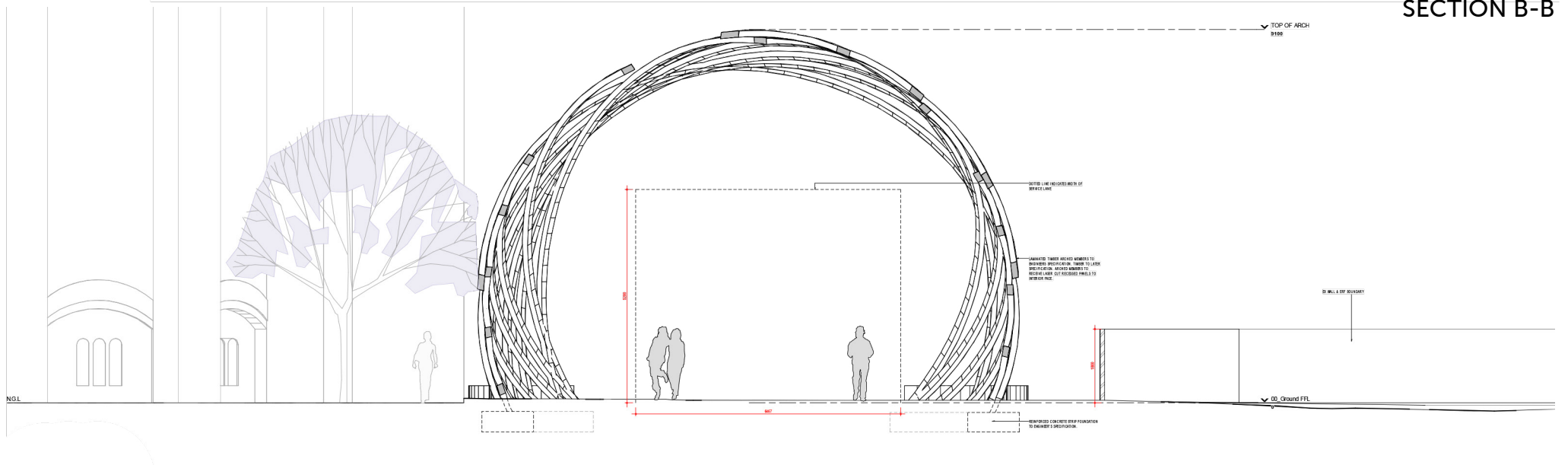
SOUTH ELEVATION



WEST ELEVATION



SECTION B-B



SECTION A-A