

KROMKRANS 208 IS
PORTION 57

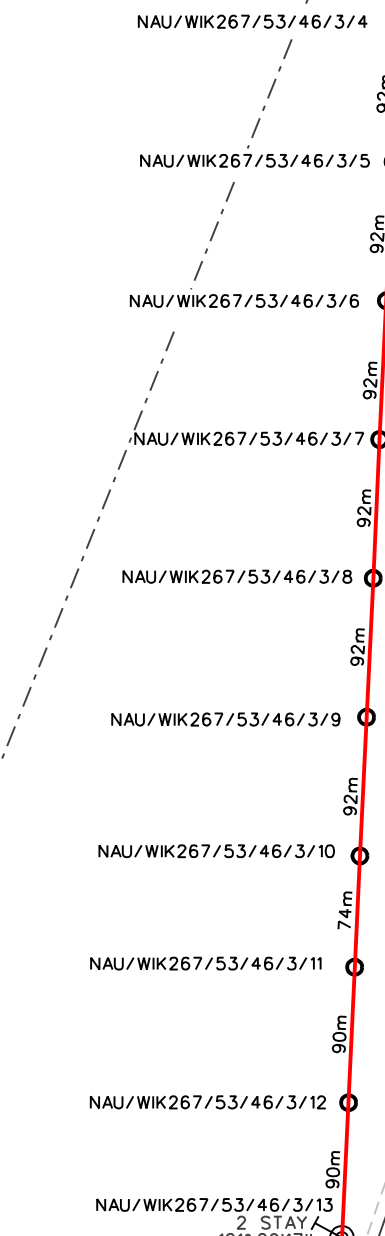
KROMKRANS 208 IS
REMAINDER OF PORTION 2

T-Off Pole:
NAU/WIK267/53/46/4

A	11.026
B	10.521
C	10.102

Post

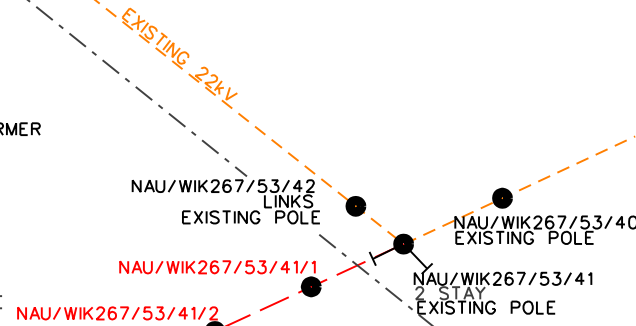
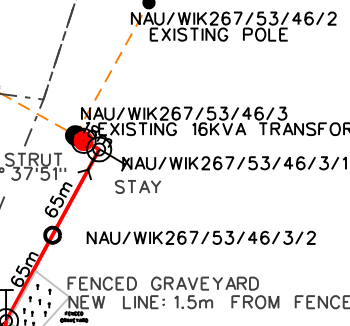
KROMKRANS 208 IS
PORTION 58



T-Off Pole:
NAU/WIK267/53/46/3/14

A	9.203
B	8.634
C	7.954

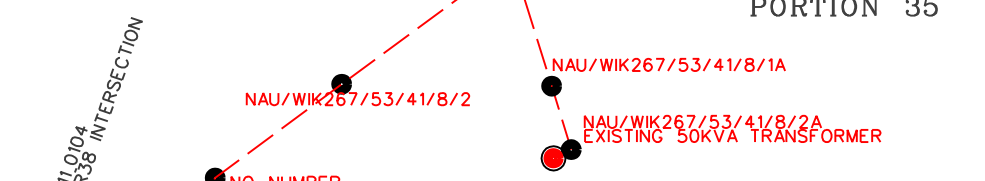
Wishbone



DISMANTLE EXISTING T-OFF
NAU/WIK267/53/41-
NAU/WIK267/53/41/8/4
BUILD NEW LINE FROM
NAU/WIK267/53/46/3 -
NAU/WIK267/53/46/3/15
(NAU/WIK267/53/41/8/5)
RELABEL REST OF FEEDER ACCORDINGLY



KROMKRANS 208 IS
PORTION 35



LJCC ENGINEERING SURVEY	
FEEDER:	WITKLOOF/NAUDES BANK 22kV
PROJECT NO:	ARE SHOMENG MINE
CONDUCTOR:	FOX
LENGTH OF LINE:	0.997 km.
SURVEYOR:	A NEETHLING (082 463 1253)
DRAUGHTSPERSON:	TREEG
CUSTOMER:	TSEMOKGO
PROPERTY:	VARIOUS
COMPILATION:	2629 BB
SCALE:	1 : 5 000
PAGE: 1	OF 1
REV:	1