

OFFICES / DOOR SCHEDULE

Scale 1:100

NOTE : ALL GLAZING TO COMPLY WITH PART N OF SANS 10400.

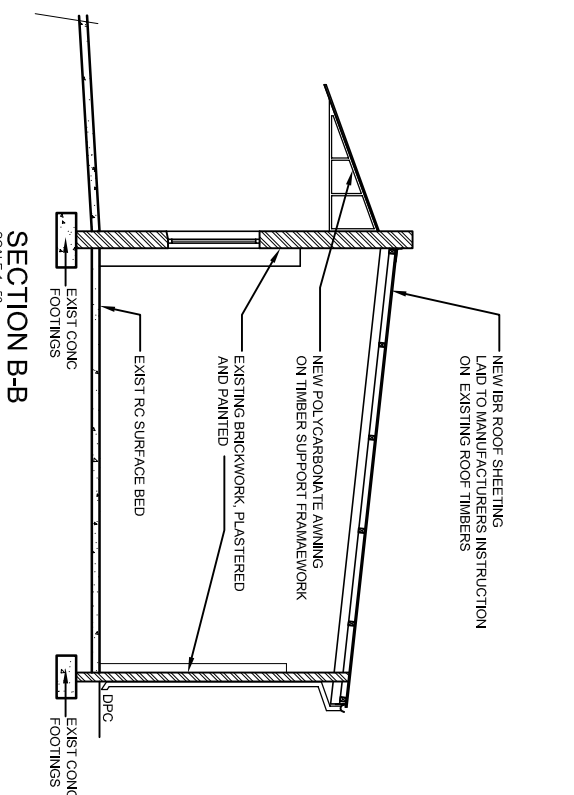
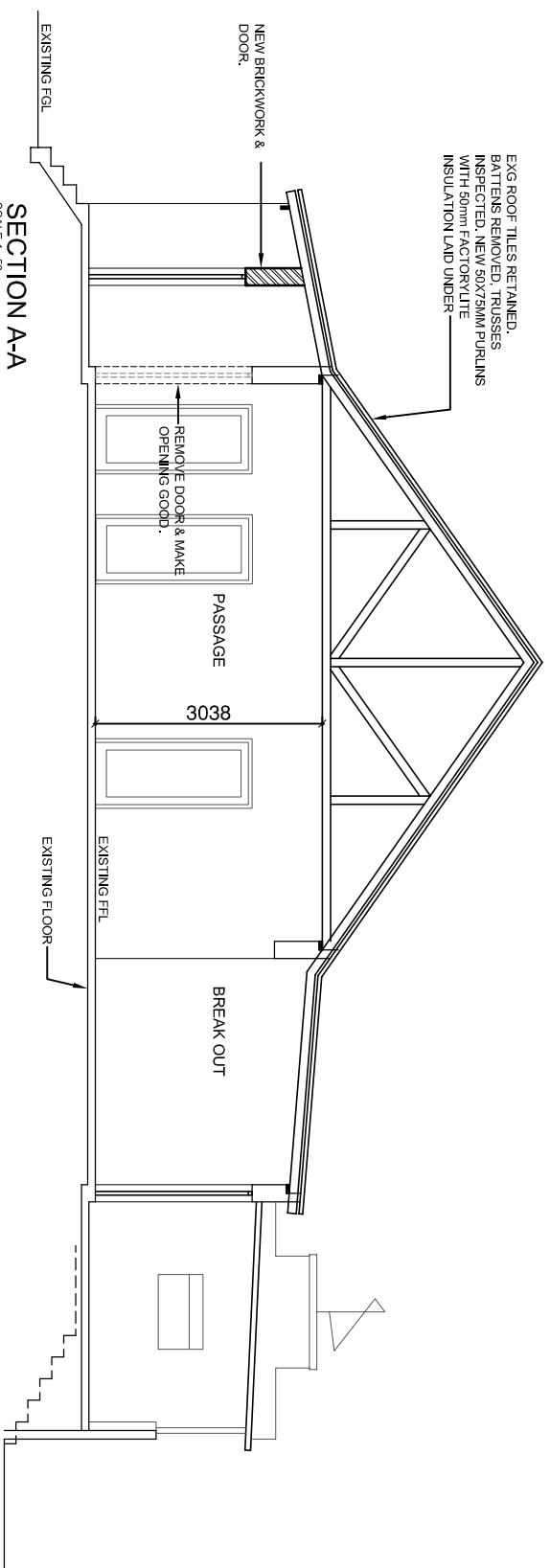
WINDOW REF	ELEVATIONAL OPENING SIZE / OVERALL GLAZING SIZE	GLAZING	FRAME
W1		4MM CLEAR FLOAT GLASS TO COMPLY WITH SAGGA AND SANS 10400 PART N REGULATIONS	WHITE ANODISED ALUMINIUM FRAME AS PER AAAMSA SPECIFICATIONS
W2		6MM CLEAR ANNEALED SAFETY GLASS TO COMPLY WITH SAGGA AND SANS 10400 PART N REGULATIONS	WHITE ANODISED ALUMINIUM FRAME AS PER AAAMSA SPECIFICATIONS
W3, W4, W5		6MM CLEAR ANNEALED SAFETY GLASS TO COMPLY WITH SAGGA AND SANS 10400 PART N REGULATIONS	WHITE ANODISED ALUMINIUM FRAME AS PER AAAMSA SPECIFICATIONS
W6		6MM CLEAR ANNEALED SAFETY GLASS TO COMPLY WITH SAGGA AND SANS 10400 PART N REGULATIONS	WHITE ANODISED ALUMINIUM FRAME AS PER AAAMSA SPECIFICATIONS
W7, W8		6MM CLEAR ANNEALED SAFETY GLASS TO COMPLY WITH SAGGA AND SANS 10400 PART N REGULATIONS	WHITE ANODISED ALUMINIUM FRAME AS PER AAAMSA SPECIFICATIONS
D8		6MM LOW 'E' SAFETY GLASS TO COMPLY WITH SAGGA AND SANS 10400 PART N REGULATIONS	WHITE ANODISED ALUMINIUM FRAME AS PER AAAMSA SPECIFICATIONS
W9		6MM LOW 'E' SAFETY GLASS TO COMPLY WITH SAGGA AND SANS 10400 PART N REGULATIONS	WHITE ANODISED ALUMINIUM FRAME AS PER AAAMSA SPECIFICATIONS
W10, W11		6MM LOW 'E' SAFETY GLASS TO COMPLY WITH SAGGA AND SANS 10400 PART N REGULATIONS	WHITE ANODISED ALUMINIUM FRAME AS PER AAAMSA SPECIFICATIONS
W12, W13		6MM LOW 'E' SAFETY GLASS TO COMPLY WITH SAGGA AND SANS 10400 PART N REGULATIONS	WHITE ANODISED ALUMINIUM FRAME AS PER AAAMSA SPECIFICATIONS
W14		6MM LOW 'E' SAFETY GLASS TO COMPLY WITH SAGGA AND SANS 10400 PART N REGULATIONS	WHITE ANODISED ALUMINIUM FRAME AS PER AAAMSA SPECIFICATIONS
D1		6MM LOW 'E' SAFETY GLASS TO COMPLY WITH SAGGA AND SANS 10400 PART N REGULATIONS	WHITE ANODISED ALUMINIUM FRAME AS PER AAAMSA SPECIFICATIONS

OUTBUILDING WINDOW SCHEDULE

Scale 1:100

NOTE : ALL GLAZING TO COMPLY WITH PART N OF SANS 10400.

WINDOW REF	ELEVATIONAL OPENING SIZE / OVERALL GLAZING SIZE	GLAZING	FRAME
W1		4MM CLEAR FLOAT GLASS TO COMPLY WITH SAGGA AND SANS 10400 PART N REGULATIONS	WHITE ANODISED ALUMINIUM FRAME AS PER AAAMSA SPECIFICATIONS
W2, W3, W7		6MM CLEAR ANNEALED SAFETY GLASS TO COMPLY WITH SAGGA AND SANS 10400 PART N REGULATIONS	WHITE ANODISED ALUMINIUM FRAME AS PER AAAMSA SPECIFICATIONS
W4, W5		6MM CLEAR ANNEALED SAFETY GLASS TO COMPLY WITH SAGGA AND SANS 10400 PART N REGULATIONS	WHITE ANODISED ALUMINIUM FRAME AS PER AAAMSA SPECIFICATIONS
W6		6MM CLEAR ANNEALED SAFETY GLASS TO COMPLY WITH SAGGA AND SANS 10400 PART N REGULATIONS	WHITE ANODISED ALUMINIUM FRAME AS PER AAAMSA SPECIFICATIONS
W8		6MM CLEAR ANNEALED SAFETY GLASS TO COMPLY WITH SAGGA AND SANS 10400 PART N REGULATIONS	WHITE ANODISED ALUMINIUM FRAME AS PER AAAMSA SPECIFICATIONS



OWNER:			
VOL:	RATE NO:		
ARCHITECT:	CODE:		
NO	DATE	BY	REMARK
01	2024-02-28	JA	ISSUED FOR TENDER
PROJECT: Renovation of Existing Building for ASP Rope Access			
SITE ADDRESS: 12 Biv/Inwood Road, Umhlo			
DRAWN	CHECKED	DATE	APPROVED
SNLS	JA	12-03-14	JA
WORKSPACE SOLUTION			
Kemble 82 Thames Drive Westville 3629			
T: +27 31 266 4879 F: +27 86 953 4290			
E: jayson@workspace-solution.co.za			
W: workspace-solution.co.za			
DRAWING TITLE	SCHEDULES & SECTIONS		
A1	DRAWING NO:	WS005-01-204-S	REVISION:
			00