

**SCREENING REPORT FOR AN ENVIRONMENTAL AUTHORIZATION AS
REQUIRED BY THE 2014 EIA REGULATIONS – PROPOSED SITE
ENVIRONMENTAL SENSITIVITY**

EIA Reference number: N/A

Project name: Aberdeen Wind Facility 1

Project title: Aberdeen WEF 1

Date screening report generated: 24/11/2022 15:16:39

Applicant: Aberdeen Wind Facility 1 (Pty) Ltd

Compiler: N/A

Compiler signature:
.....

Application Category: Utilities Infrastructure | Electricity | Generation | Renewable | Wind

Table of Contents

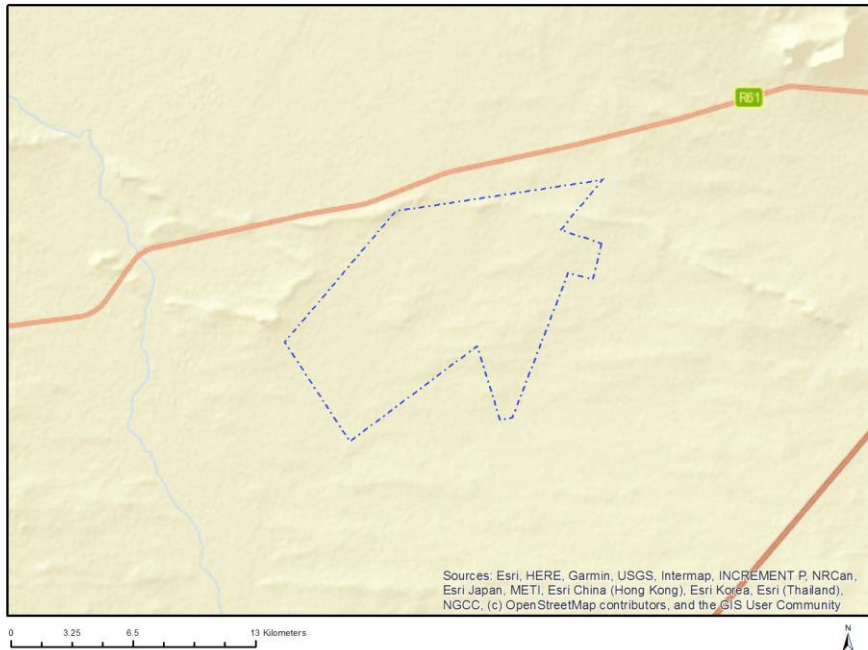
- Proposed Project Location 3
 - Orientation map 1: General location 3
- Map of proposed site and relevant area(s) 4
 - Cadastral details of the proposed site 4
 - Wind and Solar developments with an approved Environmental Authorisation or applications under consideration within 30 km of the proposed area 5
 - Environmental Management Frameworks relevant to the application 5
- Environmental screening results and assessment outcomes 5
 - Relevant development incentives, restrictions, exclusions or prohibitions 5
- Map indicating proposed development footprint within applicable development incentive, restriction, exclusion or prohibition zones 6
 - Proposed Development Area Environmental Sensitivity 6
 - Specialist assessments identified 7
- Results of the environmental sensitivity of the proposed area 9
 - MAP OF RELATIVE AGRICULTURE THEME SENSITIVITY 9
 - MAP OF RELATIVE ANIMAL SPECIES THEME SENSITIVITY 10
 - MAP OF RELATIVE AQUATIC BIODIVERSITY THEME SENSITIVITY 11
 - MAP OF RELATIVE ARCHAEOLOGICAL AND CULTURAL HERITAGE THEME SENSITIVITY 12
 - MAP OF RELATIVE AVIAN (WIND) THEME SENSITIVITY 13
 - MAP OF RELATIVE BATS (WIND) THEME SENSITIVITY 14
 - MAP OF RELATIVE CIVIL AVIATION (WIND) THEME SENSITIVITY 15
 - MAP OF RELATIVE DEFENCE (WIND) THEME SENSITIVITY 16
 - MAP OF RELATIVE FLICKER THEME SENSITIVITY 17
 - MAP OF RELATIVE LANDSCAPE (WIND) THEME SENSITIVITY 18
 - MAP OF RELATIVE PALEONTOLOGY THEME SENSITIVITY 19
 - MAP OF RELATIVE NOISE THEME SENSITIVITY 20
 - MAP OF RELATIVE PLANT SPECIES THEME SENSITIVITY 21
 - MAP OF RELATIVE RFI (WIND) THEME SENSITIVITY 22
 - MAP OF RELATIVE TERRESTRIAL BIODIVERSITY THEME SENSITIVITY 23

Proposed Project Location

Orientation map 1: General location



Map of proposed site and relevant area(s)



Cadastral details of the proposed site

Property details:

| No | Farm Name | Farm/ Erf No | Portion | Latitude | Longitude | Property Type |
|----|--------------------|--------------|---------|--------------|--------------|---------------|
| 1 | KRAANVOGEL KUIL | 155 | 0 | 32°35'24.82S | 23°47'30.42E | Farm |
| 2 | KOPPIES KRAAL | 157 | 0 | 32°33'27.93S | 23°40'31.15E | Farm |
| 3 | SAMBOKDOORNS | 92 | 0 | 32°28'5.23S | 23°44'41.22E | Farm |
| 4 | DOORN POORT | 93 | 0 | 32°31'51.29S | 23°45'32.14E | Farm |
| 5 | SAMBOKDOORNS | 92 | 4 | 32°29'57.64S | 23°42'58.96E | Farm Portion |
| 6 | KRAANVOGEL KUIL | 155 | 0 | 32°35'24.82S | 23°47'30.42E | Farm Portion |
| 7 | DOORN POORT | 93 | 1 | 32°32'13.36S | 23°47'0.41E | Farm Portion |
| 8 | KOPPIES KRAAL | 157 | 0 | 32°33'27.93S | 23°40'31.15E | Farm Portion |
| 9 | DOORN POORT | 93 | 0 | 32°31'30.95S | 23°44'10.73E | Farm Portion |

Development footprint¹ vertices:
No development footprint(s) specified.

¹ "development footprint", means the area within the site on which the development will take place and includes all ancillary developments for example roads, power lines, boundary walls, paving etc. which require vegetation clearance or which will be disturbed and for which the application has been submitted.

Wind and Solar developments with an approved Environmental Authorisation or applications under consideration within 30 km of the proposed area

No nearby wind or solar developments found.

Environmental Management Frameworks relevant to the application

No intersections with EMF areas found.

Environmental screening results and assessment outcomes

The following sections contain a summary of any development incentives, restrictions, exclusions or prohibitions that apply to the proposed development site as well as the most environmental sensitive features on the site based on the site sensitivity screening results for the application classification that was selected. The application classification selected for this report is: **Utilities Infrastructure | Electricity | Generation | Renewable | Wind.**

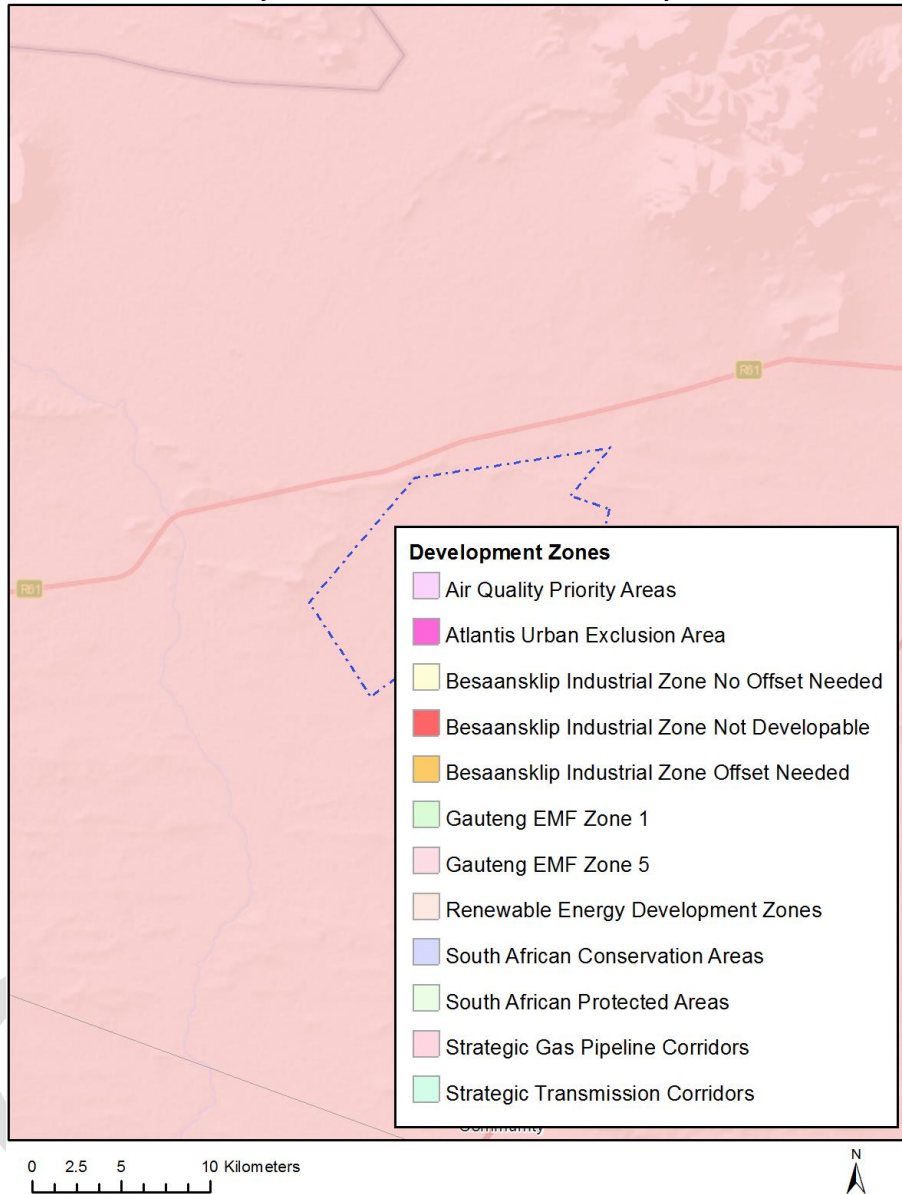
Relevant development incentives, restrictions, exclusions or prohibitions

The following development incentives, restrictions, exclusions or prohibitions and their implications that apply to this site are indicated below.

| Incentive, restriction or prohibition | Implication |
|--|---|
| Strategic Transmission Corridor-Eastern Corridor | https://screening.environment.gov.za/ScreeningDownloads/DevelopmentZones/Combined_EGI.pdf |
| Renewable energy development zones 11-Beaufort West | https://screening.environment.gov.za/ScreeningDownloads/DevelopmentZones/Combined_REDZ.pdf |
| Strategic Gas Pipeline Corridors-Phase 9: Inland Corridor from Saldanha to Coega | https://screening.environment.gov.za/ScreeningDownloads/DevelopmentZones/Combined_GAS.pdf |

Map indicating proposed development footprint within applicable development incentive, restriction, exclusion or prohibition zones

Project Location: Aberdeen Wind Facility 1



Proposed Development Area Environmental Sensitivity

The following summary of the development site environmental sensitivities is identified. Only the highest environmental sensitivity is indicated. The footprint environmental sensitivities for the proposed development footprint as identified, are indicative only and must be verified on site by a suitably qualified person before the specialist assessments identified below can be confirmed.

| Theme | Very High sensitivity | High sensitivity | Medium sensitivity | Low sensitivity |
|----------------------|-----------------------|------------------|--------------------|-----------------|
| Agriculture Theme | | X | | |
| Animal Species Theme | | X | | |

| | | | | |
|--|---|---|---|---|
| Aquatic Biodiversity Theme | X | | | |
| Archaeological and Cultural Heritage Theme | | X | | |
| Avian (Wind) Theme | | | | X |
| Bats (Wind) Theme | | X | | |
| Civil Aviation (Wind) Theme | | | | X |
| Defence (Wind) Theme | | | | X |
| Flicker Theme | X | | | |
| Landscape (Wind) Theme | X | | | |
| Paleontology Theme | X | | | |
| Noise Theme | X | | | |
| Plant Species Theme | | | X | |
| RFI (Wind) Theme | | X | | |
| Terrestrial Biodiversity Theme | X | | | |

Specialist assessments identified

Based on the selected classification, and the environmental sensitivities of the proposed development footprint, the following list of specialist assessments have been identified for inclusion in the assessment report. It is the responsibility of the EAP to confirm this list and to motivate in the assessment report, the reason for not including any of the identified specialist study including the provision of photographic evidence of the site situation.

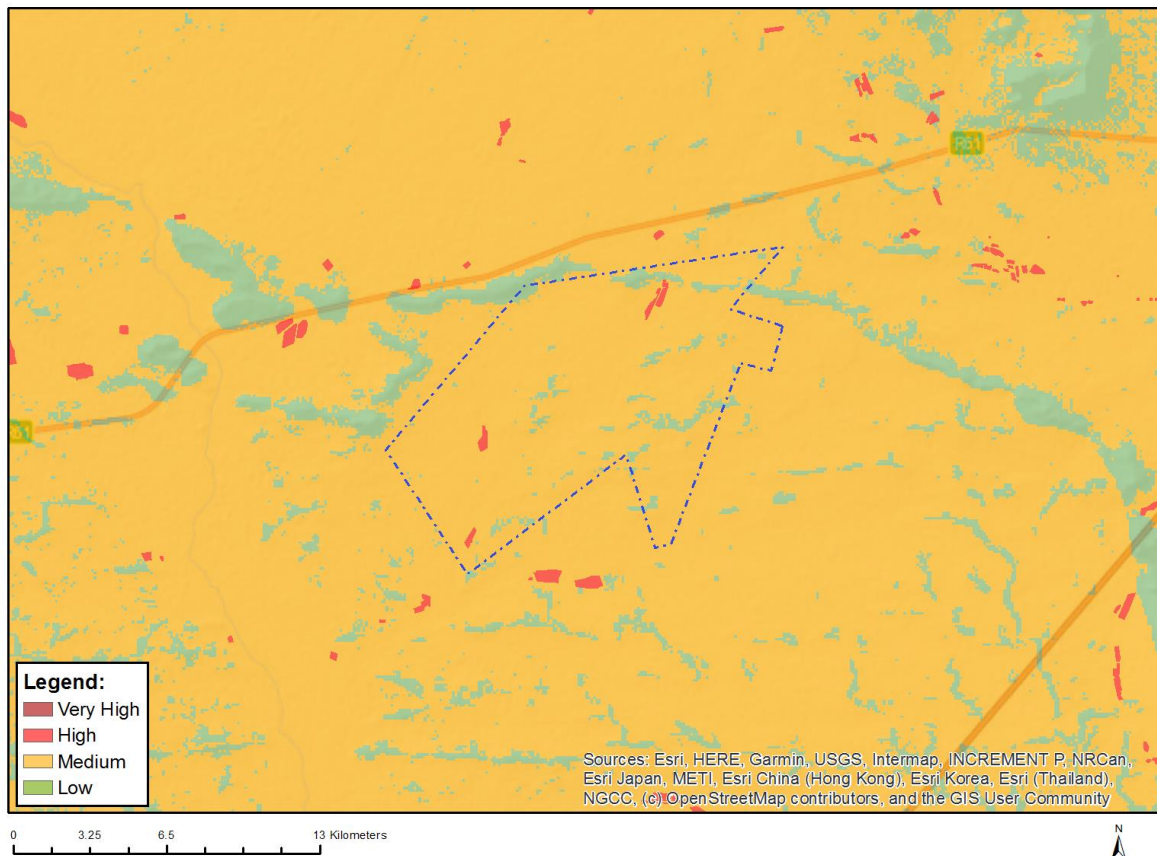
| N o | Specialist assessment | Assessment Protocol |
|------------|--|---|
| 1 | Agricultural Impact Assessment | https://screening.environment.gov.za/ScreeningDownloads/AssessmentProtocols/Gazetted_WindAndSolar_Agriculture_Assessment_Protocols.pdf |
| 2 | Landscape/Visual Impact Assessment | https://screening.environment.gov.za/ScreeningDownloads/AssessmentProtocols/Gazetted_General_Requirement_Assessment_Protocols.pdf |
| 3 | Archaeological and Cultural Heritage Impact Assessment | https://screening.environment.gov.za/ScreeningDownloads/AssessmentProtocols/Gazetted_General_Requirement_Assessment_Protocols.pdf |
| 4 | Palaeontology Impact Assessment | https://screening.environment.gov.za/ScreeningDownloads/AssessmentProtocols/Gazetted_General_Requirement_Assessment_Protocols.pdf |
| 5 | Terrestrial Biodiversity Impact Assessment | https://screening.environment.gov.za/ScreeningDownloads/AssessmentProtocols/Gazetted_Terrestrial_Biodiversity_Assessment_Protocols.pdf |

| | | |
|----|--|---|
| 6 | Aquatic Biodiversity Impact Assessment | https://screening.environment.gov.za/ScreeningDownloads/AssessmentProtocols/Gazetted Aquatic Biodiversity Assessment Protocols.pdf |
| 7 | Avian Impact Assessment | https://screening.environment.gov.za/ScreeningDownloads/AssessmentProtocols/Gazetted Avifauna Assessment Protocols.pdf |
| 8 | Civil Aviation Assessment | https://screening.environment.gov.za/ScreeningDownloads/AssessmentProtocols/Gazetted Civil Aviation Installations Assessment Protocols.pdf |
| 9 | Defense Assessment | https://screening.environment.gov.za/ScreeningDownloads/AssessmentProtocols/Gazetted Defence Installations Assessment Protocols.pdf |
| 10 | RFI Assessment | https://screening.environment.gov.za/ScreeningDownloads/AssessmentProtocols/Gazetted General Requirement Assessment Protocols.pdf |
| 11 | Noise Impact Assessment | https://screening.environment.gov.za/ScreeningDownloads/AssessmentProtocols/Gazetted Noise Impacts Assessment Protocol.pdf |
| 12 | Flicker Assessment | https://screening.environment.gov.za/ScreeningDownloads/AssessmentProtocols/Gazetted General Requirement Assessment Protocols.pdf |
| 13 | Traffic Impact Assessment | https://screening.environment.gov.za/ScreeningDownloads/AssessmentProtocols/Gazetted General Requirement Assessment Protocols.pdf |
| 14 | Geotechnical Assessment | https://screening.environment.gov.za/ScreeningDownloads/AssessmentProtocols/Gazetted General Requirement Assessment Protocols.pdf |
| 15 | Socio-Economic Assessment | https://screening.environment.gov.za/ScreeningDownloads/AssessmentProtocols/Gazetted General Requirement Assessment Protocols.pdf |
| 16 | Plant Species Assessment | https://screening.environment.gov.za/ScreeningDownloads/AssessmentProtocols/Gazetted Plant Species Assessment Protocols.pdf |
| 17 | Animal Species Assessment | https://screening.environment.gov.za/ScreeningDownloads/AssessmentProtocols/Gazetted Animal Species Assessment Protocols.pdf |

Results of the environmental sensitivity of the proposed area.

The following section represents the results of the screening for environmental sensitivity of the proposed site for relevant environmental themes associated with the project classification. It is the duty of the EAP to ensure that the environmental themes provided by the screening tool are comprehensive and complete for the project. Refer to the disclaimer.

MAP OF RELATIVE AGRICULTURE THEME SENSITIVITY

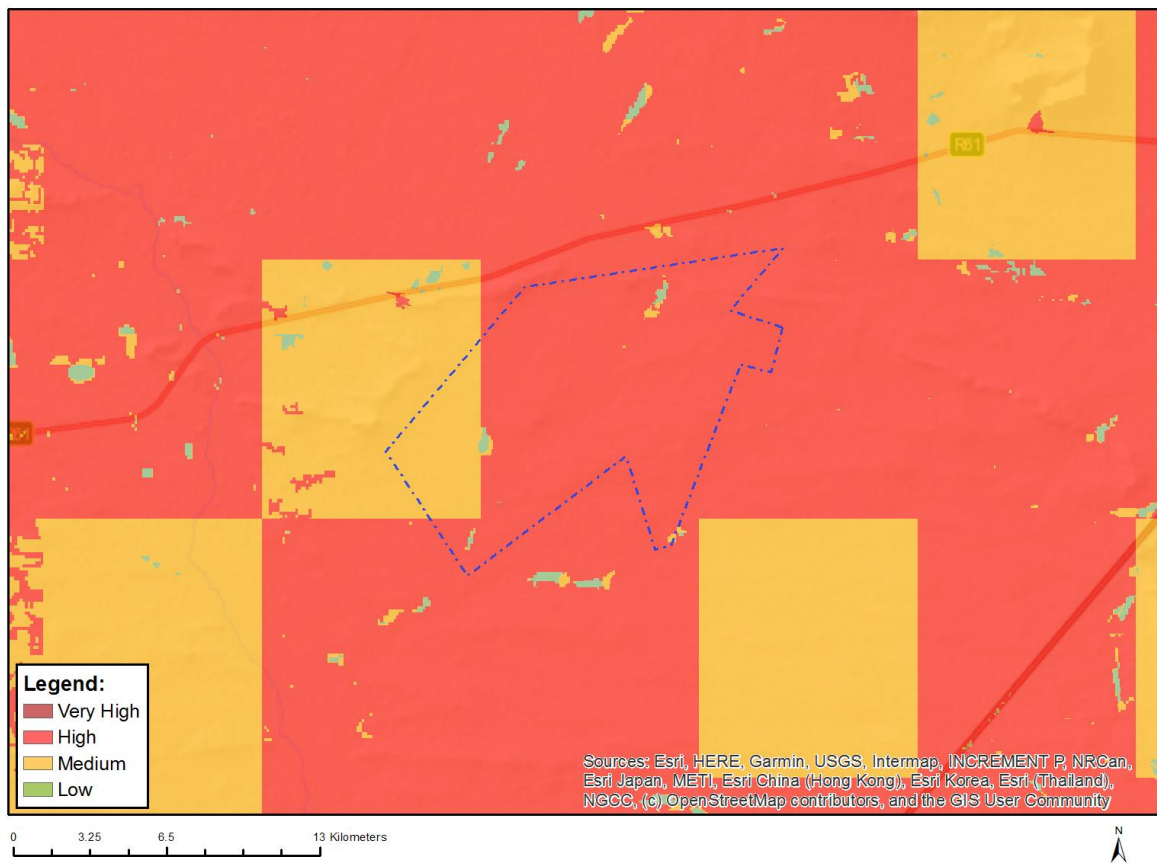


| Very High sensitivity | High sensitivity | Medium sensitivity | Low sensitivity |
|-----------------------|------------------|--------------------|-----------------|
| | X | | |

Sensitivity Features:

| Sensitivity | Feature(s) |
|-------------|--|
| High | Annual Crop Cultivation / Planted Pastures Rotation; Land capability; 06. Low-Moderate/07. Low-Moderate/08. Moderate |
| High | Old Fields; Land capability; 06. Low-Moderate/07. Low-Moderate/08. Moderate |
| Low | Land capability; 01. Very low/02. Very low/03. Low-Very low/04. Low-Very low/05. Low |
| Medium | Land capability; 06. Low-Moderate/07. Low-Moderate/08. Moderate |

MAP OF RELATIVE ANIMAL SPECIES THEME SENSITIVITY



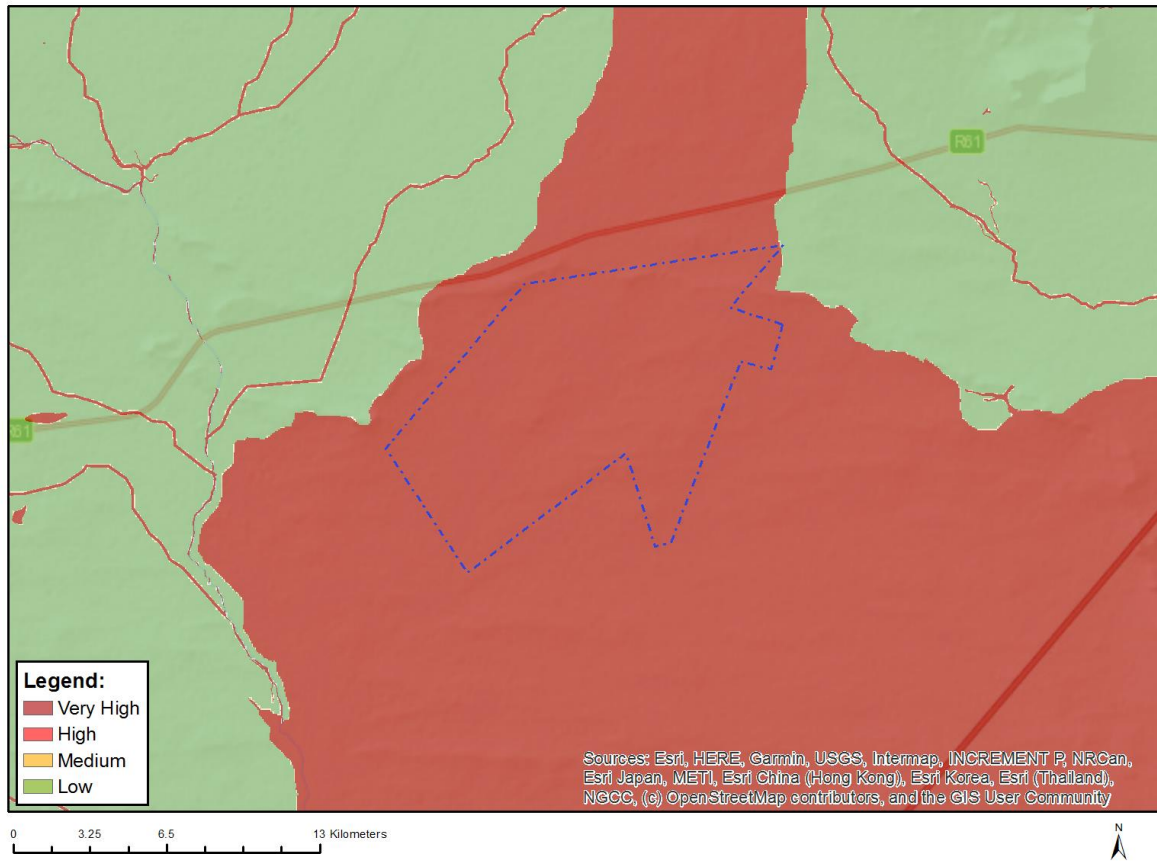
Where only a sensitive plant unique number or sensitive animal unique number is provided in the screening report and an assessment is required, the environmental assessment practitioner (EAP) or specialist is required to email SANBI at eiadatarequests@sanbi.org.za listing all sensitive species with their unique identifiers for which information is required. The name has been withheld as the species may be prone to illegal harvesting and must be protected. SANBI will release the actual species name after the details of the EAP or specialist have been documented.

| Very High sensitivity | High sensitivity | Medium sensitivity | Low sensitivity |
|-----------------------|------------------|--------------------|-----------------|
| | X | | |

Sensitivity Features:

| Sensitivity | Feature(s) |
|-------------|--------------------------------|
| High | Aves-Neotis ludwigii |
| High | Aves-Afrotis afra |
| High | Aves-Polemaetus bellicosus |
| Low | Subject to confirmation |
| Medium | Aves-Circus maurus |
| Medium | Aves-Neotis ludwigii |
| Medium | Aves-Afrotis afra |
| Medium | Reptilia-Chersobius boulengeri |

MAP OF RELATIVE AQUATIC BIODIVERSITY THEME SENSITIVITY

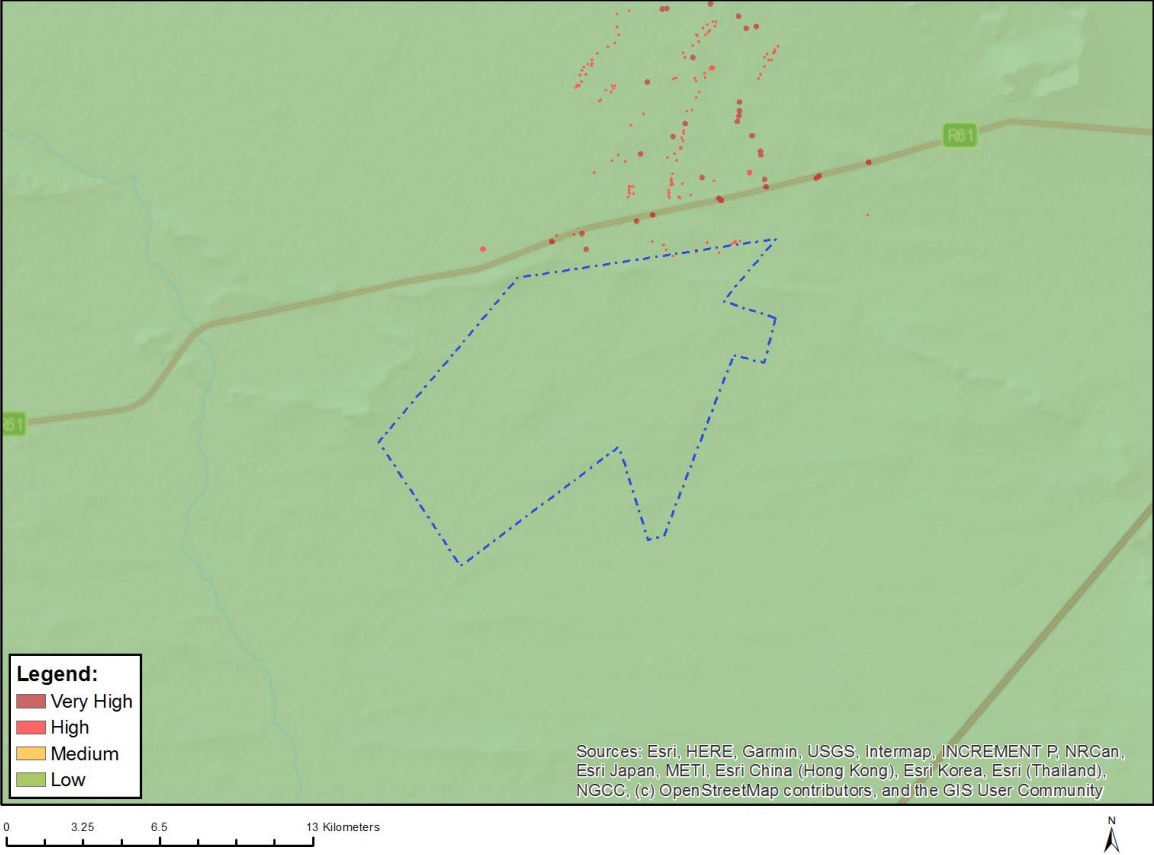


| Very High sensitivity | High sensitivity | Medium sensitivity | Low sensitivity |
|-----------------------|------------------|--------------------|-----------------|
| X | | | |

Sensitivity Features:

| Sensitivity | Feature(s) |
|-------------|---|
| Low | Low sensitivity |
| Very High | Rivers |
| Very High | Wetlands and Estuaries |
| Very High | Freshwater ecosystem priority area quinary catchments |

MAP OF RELATIVE ARCHAEOLOGICAL AND CULTURAL HERITAGE THEME SENSITIVITY

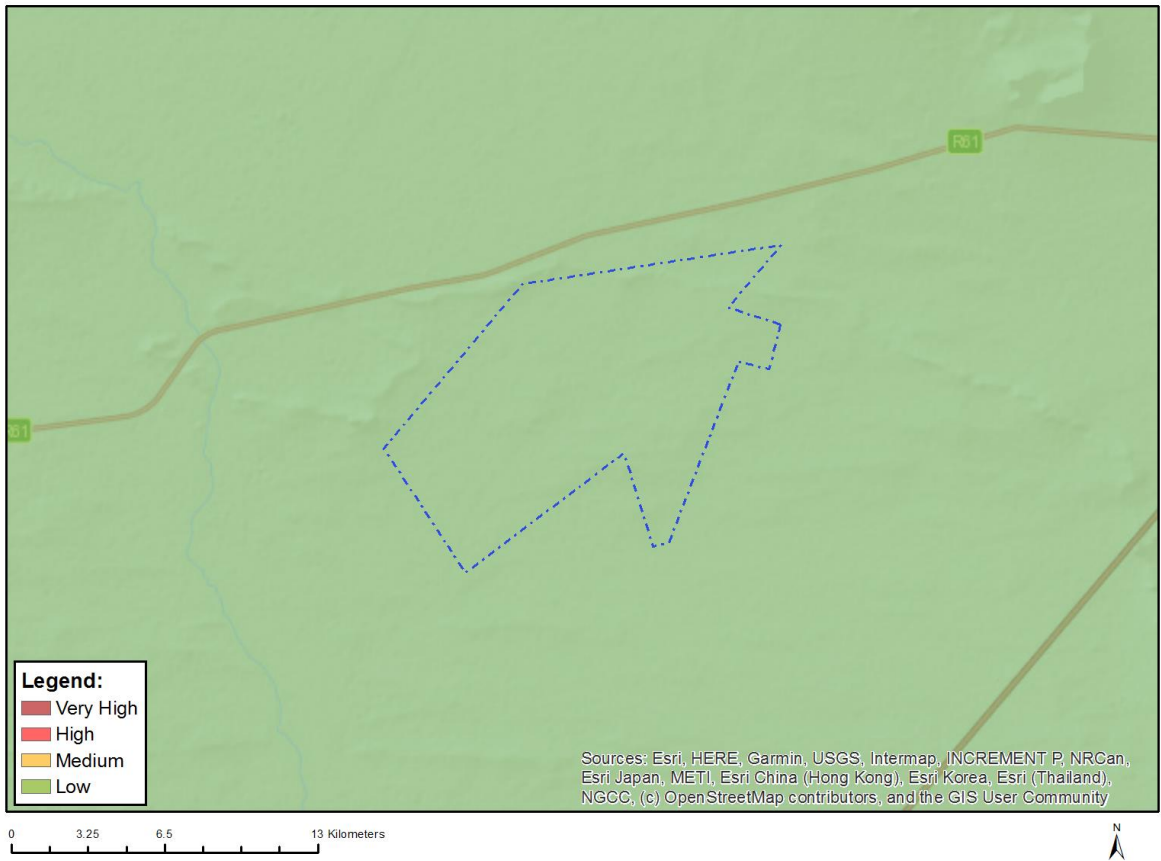


| Very High sensitivity | High sensitivity | Medium sensitivity | Low sensitivity |
|-----------------------|------------------|--------------------|-----------------|
| | X | | |

Sensitivity Features:

| Sensitivity | Feature(s) |
|-------------|--|
| High | Within 50m of a Grade IIIc Heritage site |
| Low | Low sensitivity |

MAP OF RELATIVE AVIAN (WIND) THEME SENSITIVITY

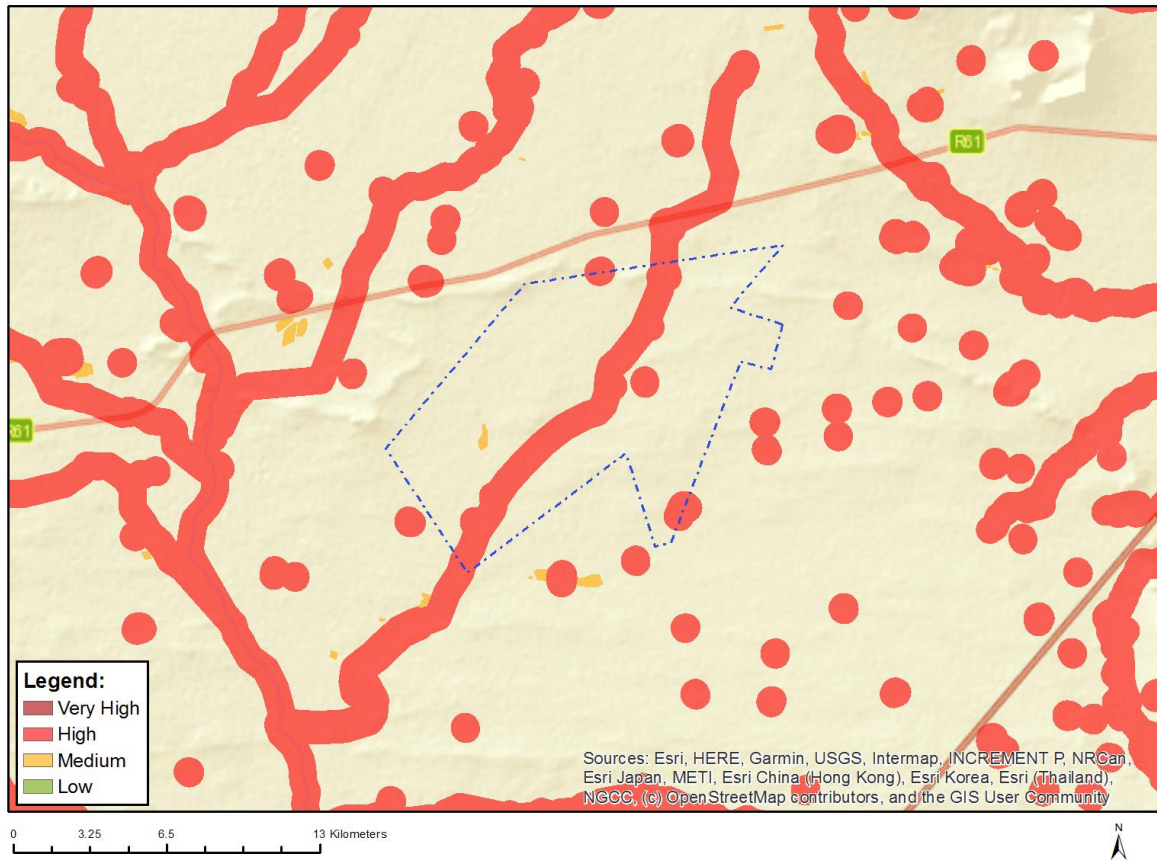


| Very High sensitivity | High sensitivity | Medium sensitivity | Low sensitivity |
|-----------------------|------------------|--------------------|-----------------|
| | | | X |

Sensitivity Features:

| Sensitivity | Feature(s) |
|-------------|----------------------------|
| Low | Area Outside Sensitivities |

MAP OF RELATIVE BATS (WIND) THEME SENSITIVITY

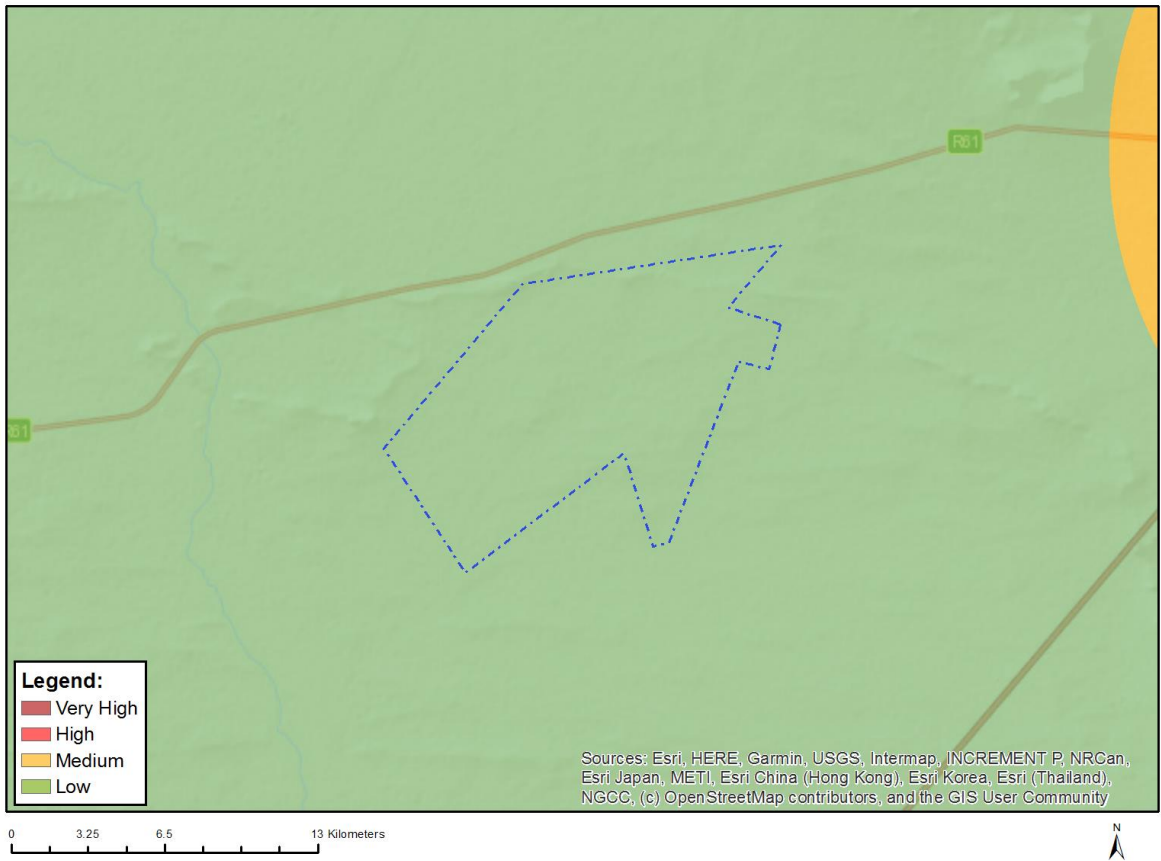


| Very High sensitivity | High sensitivity | Medium sensitivity | Low sensitivity |
|-----------------------|------------------|--------------------|-----------------|
| | X | | |

Sensitivity Features:

| Sensitivity | Feature(s) |
|-------------|---------------------------|
| High | Within 500 m of a river |
| High | Wetland |
| High | Within 500 m of a wetland |
| Medium | Croplands |

MAP OF RELATIVE CIVIL AVIATION (WIND) THEME SENSITIVITY

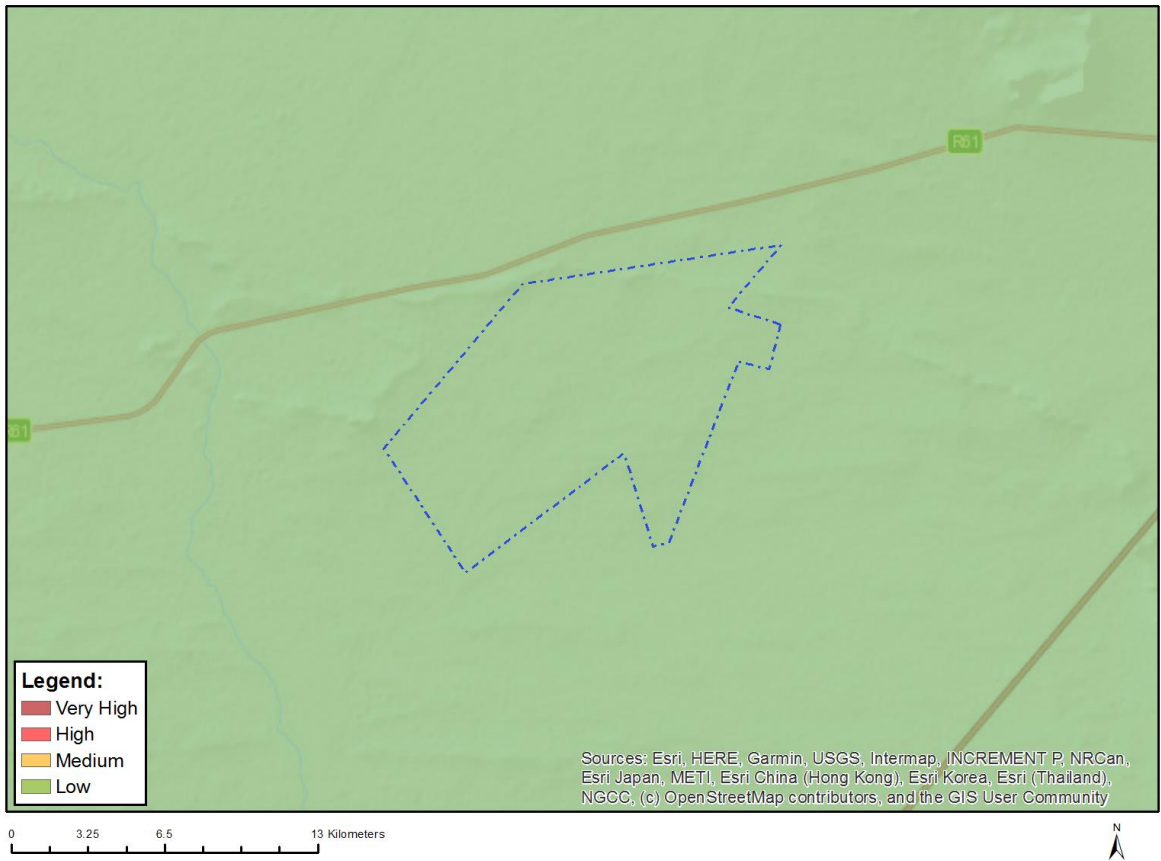


| Very High sensitivity | High sensitivity | Medium sensitivity | Low sensitivity |
|-----------------------|------------------|--------------------|-----------------|
| | | | X |

Sensitivity Features:

| Sensitivity | Feature(s) |
|-------------|-----------------|
| Low | Low sensitivity |

MAP OF RELATIVE DEFENCE (WIND) THEME SENSITIVITY

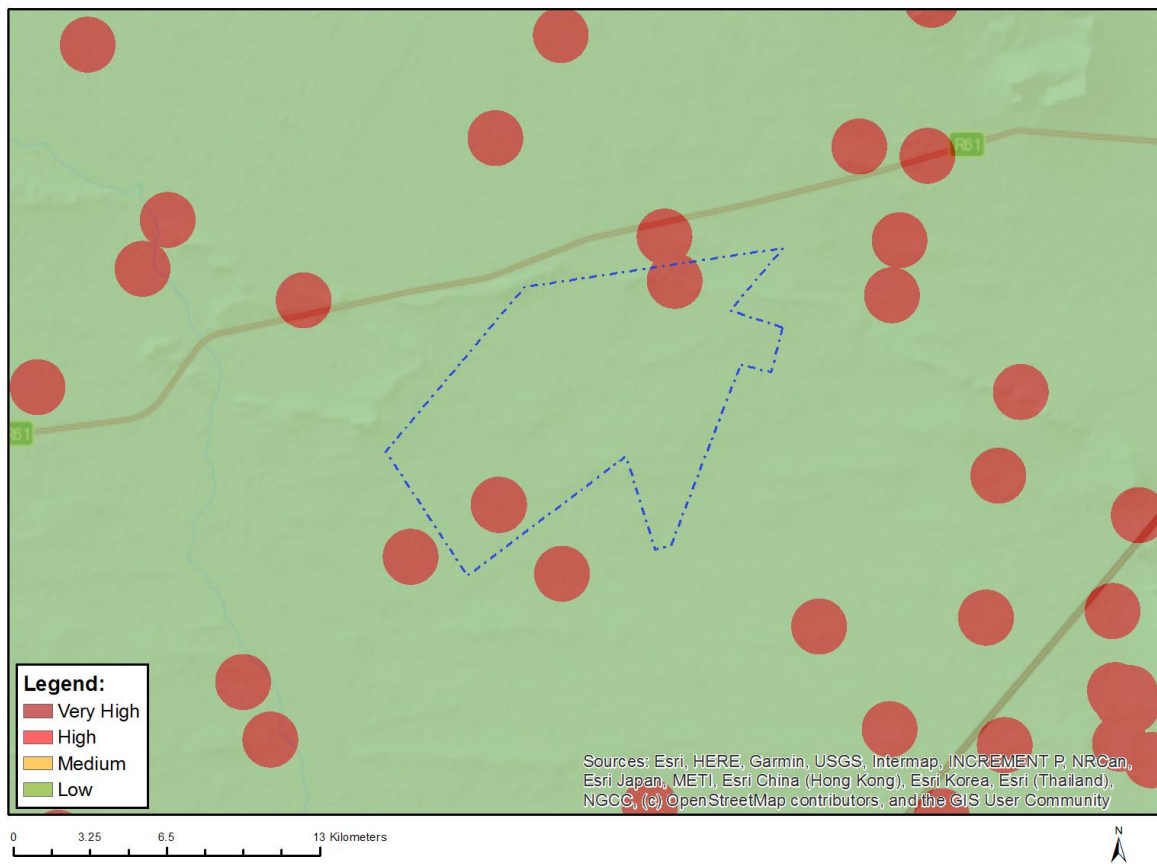


| Very High sensitivity | High sensitivity | Medium sensitivity | Low sensitivity |
|-----------------------|------------------|--------------------|-----------------|
| | | | X |

Sensitivity Features:

| Sensitivity | Feature(s) |
|-------------|-----------------|
| Low | Low sensitivity |

MAP OF RELATIVE FLICKER THEME SENSITIVITY

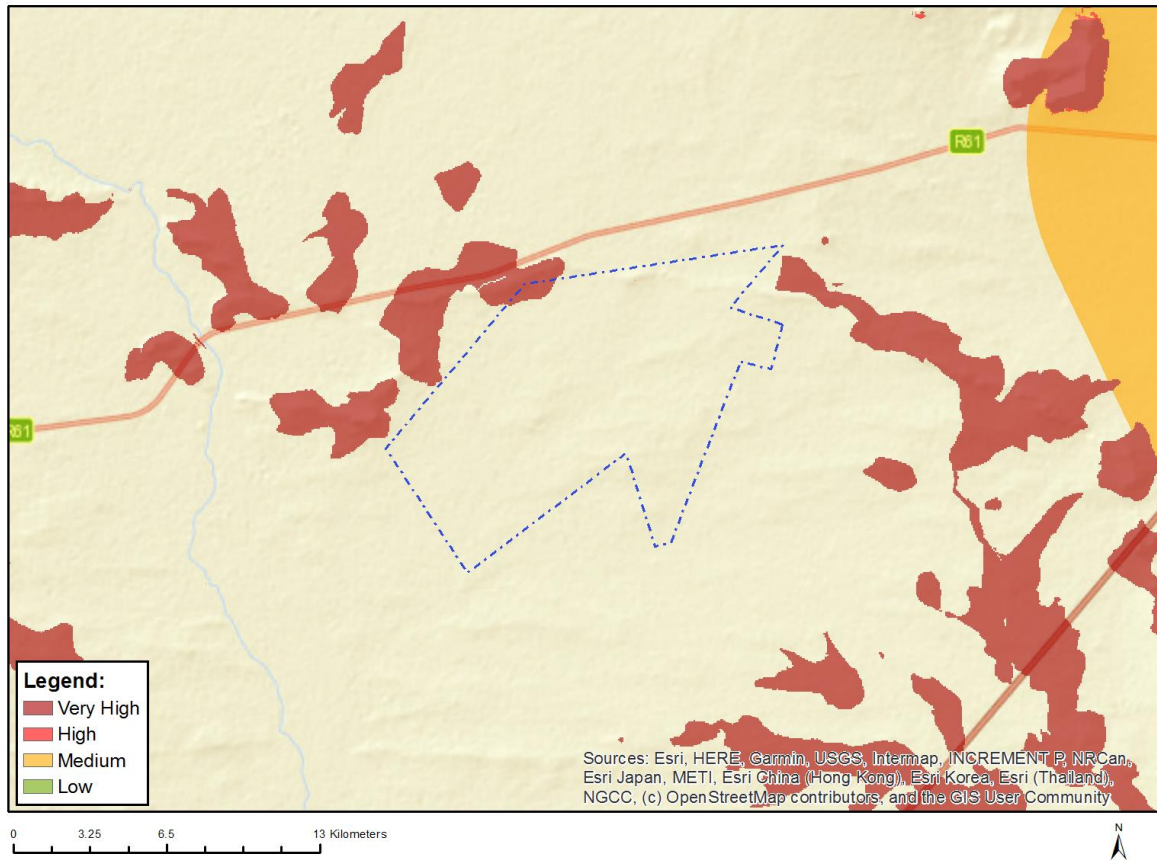


| Very High sensitivity | High sensitivity | Medium sensitivity | Low sensitivity |
|-----------------------|------------------|--------------------|-----------------|
| X | | | |

Sensitivity Features:

| Sensitivity | Feature(s) |
|-------------|--|
| Low | Area of low sensitivity |
| Very High | Potential temporarily or permanently inhabited residence |

MAP OF RELATIVE LANDSCAPE (WIND) THEME SENSITIVITY



| Very High sensitivity | High sensitivity | Medium sensitivity | Low sensitivity |
|-----------------------|------------------|--------------------|-----------------|
| X | | | |

Sensitivity Features:

| Sensitivity | Feature(s) |
|-------------|-------------------------------|
| High | Slope between 1:4 and 1:10 |
| Very High | Mountain tops and high ridges |

MAP OF RELATIVE PALEONTOLOGY THEME SENSITIVITY

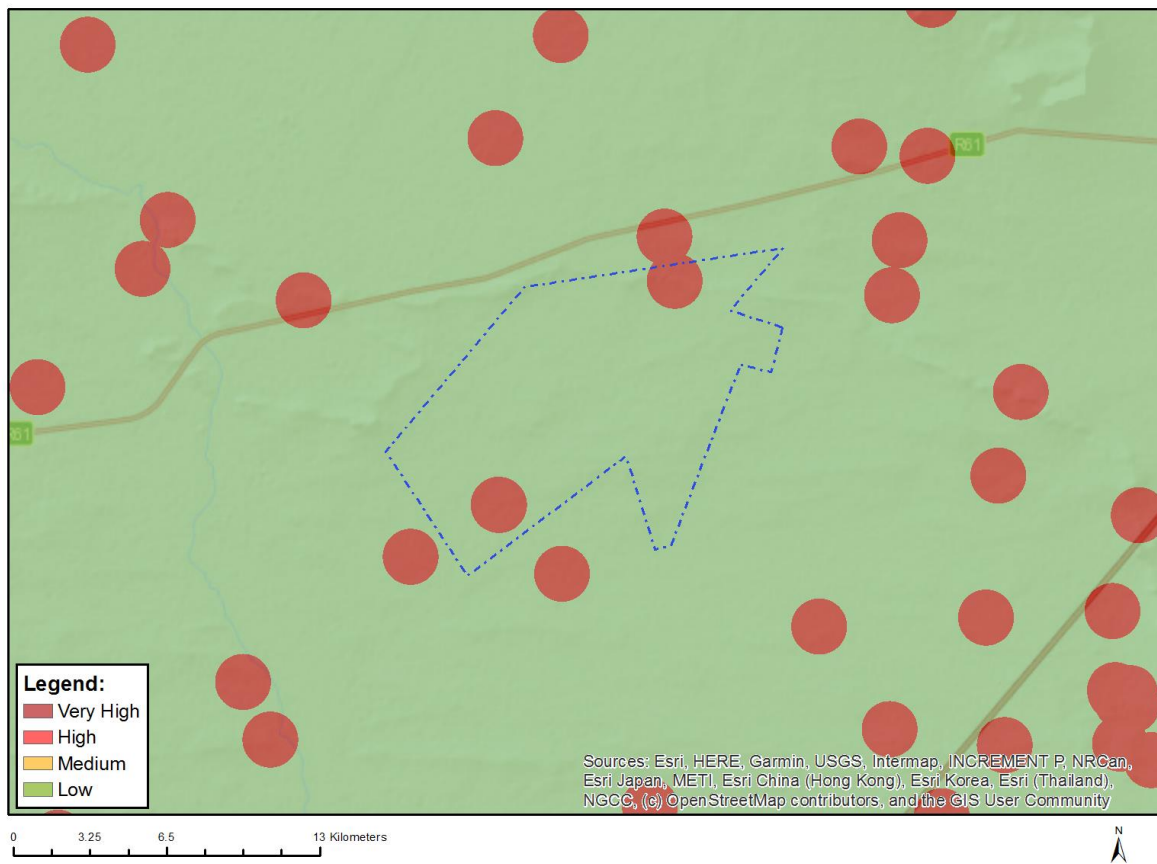


| Very High sensitivity | High sensitivity | Medium sensitivity | Low sensitivity |
|-----------------------|------------------|--------------------|-----------------|
| X | | | |

Sensitivity Features:

| Sensitivity | Feature(s) |
|-------------|---|
| Low | Features with a Low paleontological sensitivity |
| Very High | Features with a Very High paleontological sensitivity |

MAP OF RELATIVE NOISE THEME SENSITIVITY

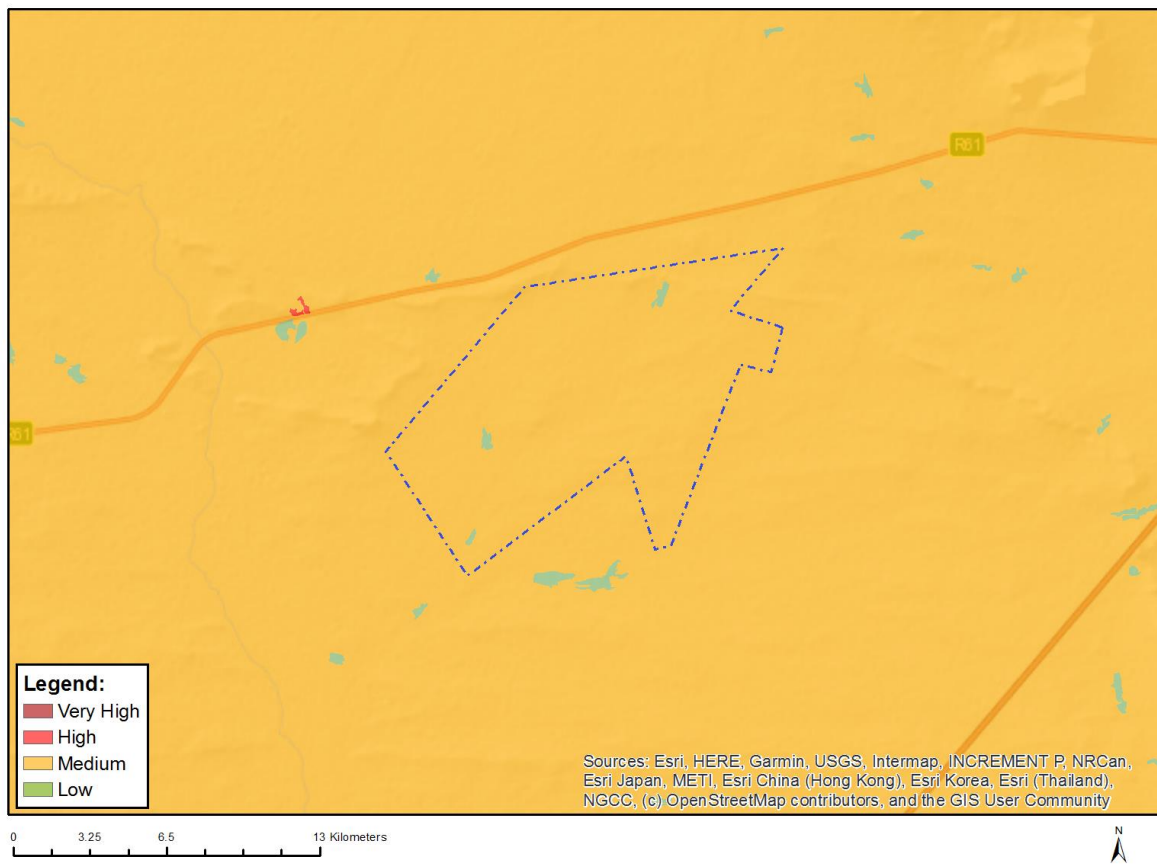


| Very High sensitivity | High sensitivity | Medium sensitivity | Low sensitivity |
|-----------------------|------------------|--------------------|-----------------|
| X | | | |

Sensitivity Features:

| Sensitivity | Feature(s) |
|-------------|--|
| Low | Area of low sensitivity |
| Very High | Potential temporarily or permanently inhabited residence |

MAP OF RELATIVE PLANT SPECIES THEME SENSITIVITY



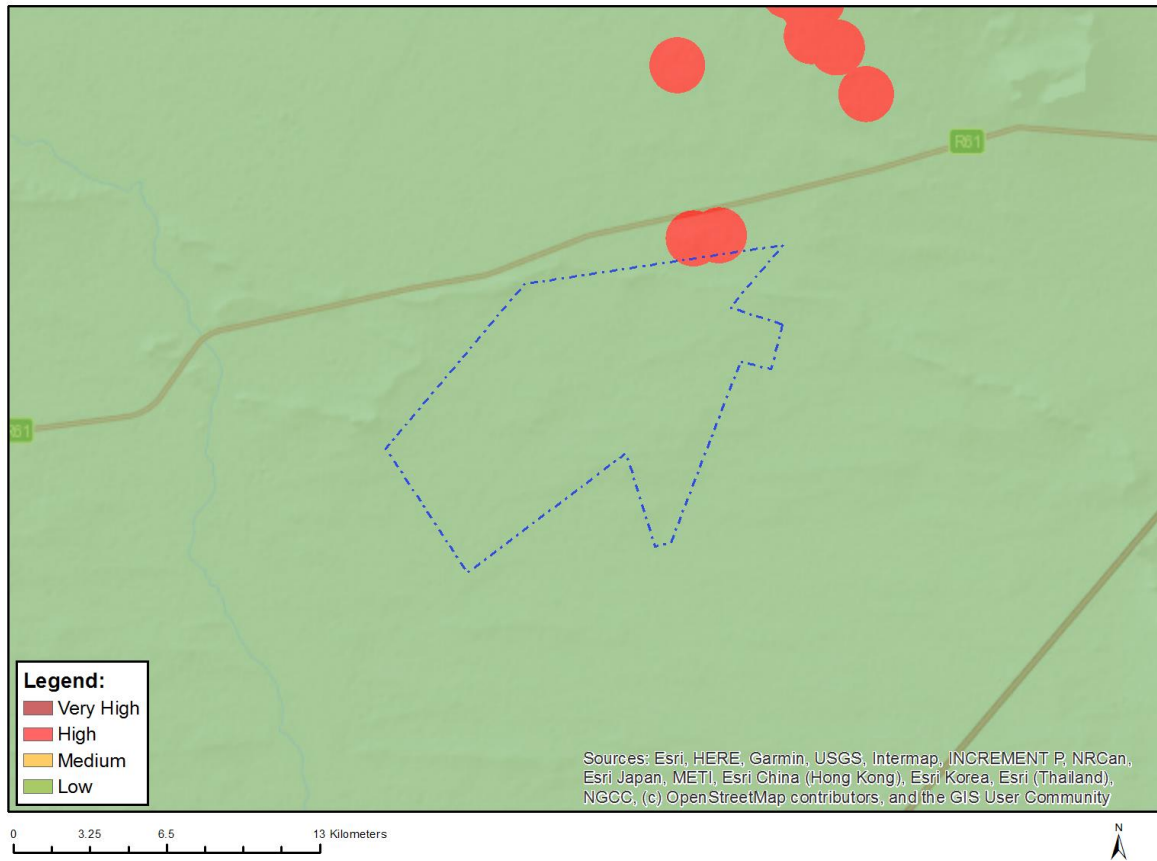
Where only a sensitive plant unique number or sensitive animal unique number is provided in the screening report and an assessment is required, the environmental assessment practitioner (EAP) or specialist is required to email SANBI at eiadatarequests@sanbi.org.za listing all sensitive species with their unique identifiers for which information is required. The name has been withheld as the species may be prone to illegal harvesting and must be protected. SANBI will release the actual species name after the details of the EAP or specialist have been documented.

| Very High sensitivity | High sensitivity | Medium sensitivity | Low sensitivity |
|-----------------------|------------------|--------------------|-----------------|
| | | X | |

Sensitivity Features:

| Sensitivity | Feature(s) |
|-------------|------------------------|
| Low | Low Sensitivity |
| Medium | Peersia frithii |
| Medium | Sensitive species 1212 |
| Medium | Tridentea virescens |
| Medium | Sensitive species 1039 |

MAP OF RELATIVE RFI (WIND) THEME SENSITIVITY

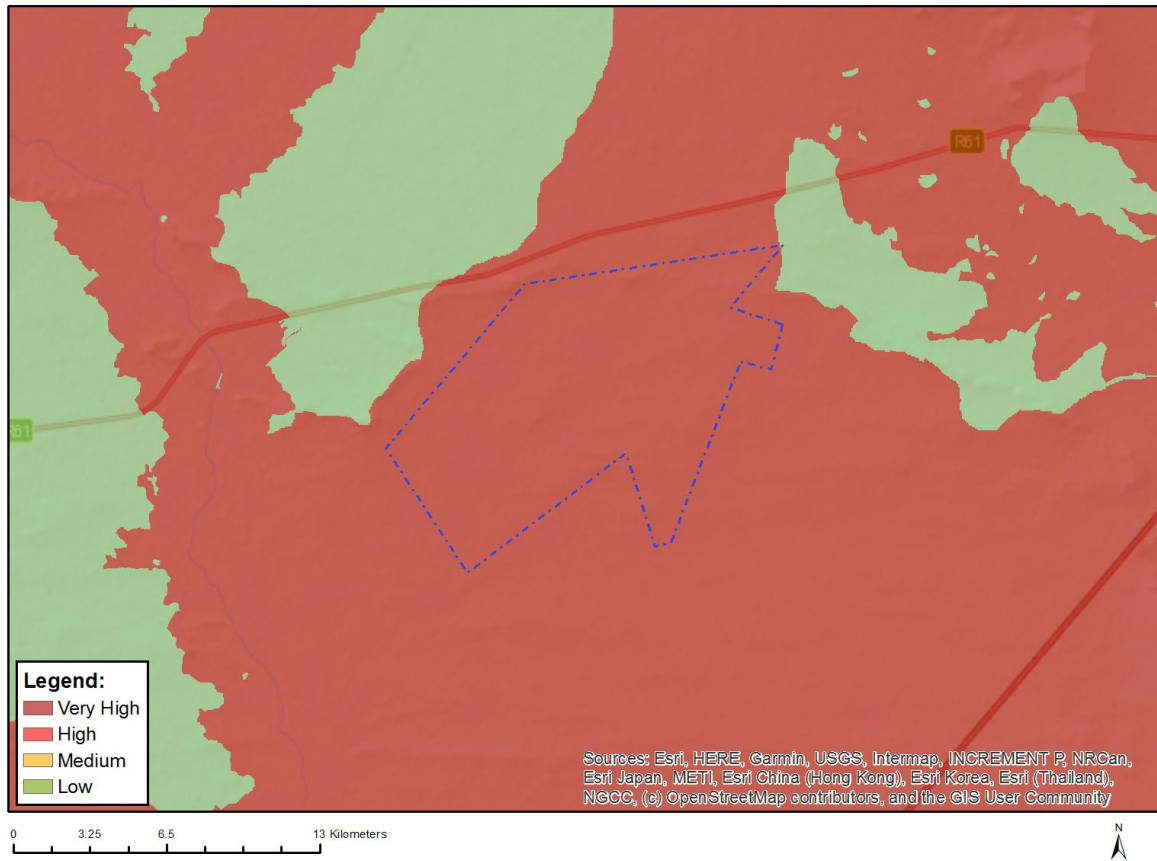


| Very High sensitivity | High sensitivity | Medium sensitivity | Low sensitivity |
|-----------------------|------------------|--------------------|-----------------|
| | X | | |

Sensitivity Features:

| Sensitivity | Feature(s) |
|-------------|--|
| High | Within 1 km of a telecommunication facility;None;More than 60 km from a Weather Radar installation |
| Low | Low sensitivity for telecommunications;None;More than 60 km from a Weather Radar installation |

MAP OF RELATIVE TERRESTRIAL BIODIVERSITY THEME SENSITIVITY



| Very High sensitivity | High sensitivity | Medium sensitivity | Low sensitivity |
|-----------------------|------------------|--------------------|-----------------|
| X | | | |

Sensitivity Features:

| Sensitivity | Feature(s) |
|-------------|---------------------------|
| Low | Low Sensitivity |
| Very High | Ecological support area 1 |
| Very High | Ecological support area 2 |
| Very High | FEPA Subcatchments |