

**ADDENDUM 1  
SITE PHOTOS TAKEN ON 20 JUNE 2012**

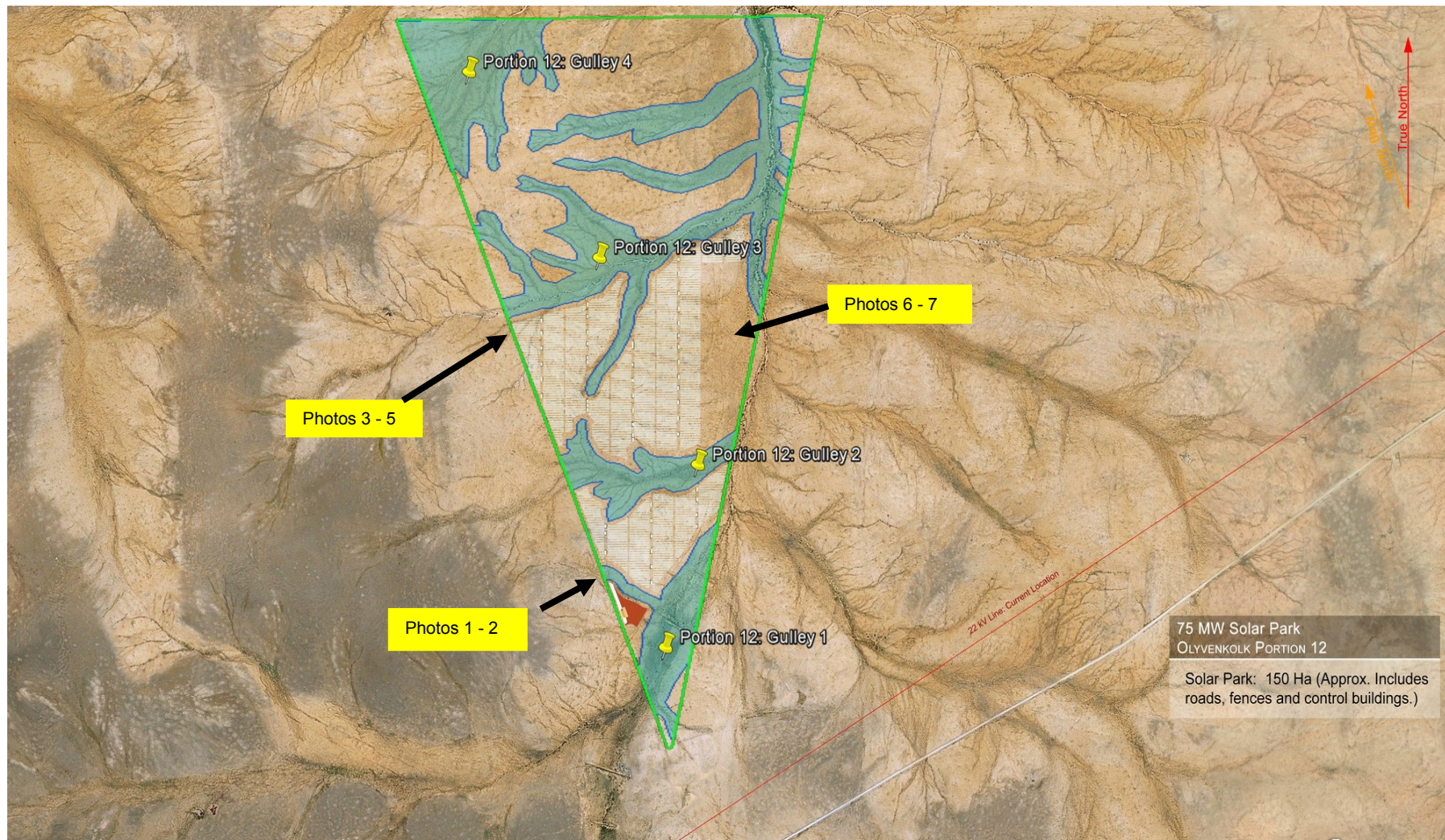






Photo 1: Southwest corner of proposed development area.  
Facing north at 29° 26' 53"S and 20° 50' 24"E.



Photo 2: Southwest corner of proposed development area.  
Facing east at 29° 26' 53"S and 20° 50' 24"E.



Photo 3: Northwest corner of proposed development area.  
Facing north at  $29^{\circ} 25' 55''\text{S}$  and  $20^{\circ} 50' 07''\text{E}$ .



Photo 4: Northwest corner of proposed development area.  
Facing northeast at  $29^{\circ} 25' 55''\text{S}$  and  $20^{\circ} 50' 07''\text{E}$ .





Photo 5: Northwest corner of proposed development area.  
Facing east at 29° 25' 55"S and 20° 50' 07"E.



Photo 6: Northeast corner of proposed development area.  
Facing south at 29° 25' 21"S and 20° 51' 02"E.



Photo 7: Northeast corner of proposed development area.  
Facing west at 29° 25' 21"S and 20° 51' 02"E.