



PO Box 74726, Lynnwood Ridge, Pretoria, 0040
Block C1, Offices@Nature, 500 Botterklapper Street
The Willows, 0080, Pretoria, South Africa
Tel: +27 (0) 12 807 7036
Fax: + 27 (0) 12 807 1014
www.shangoni.co.za
info@shangoni.co.za

Registration no: 2002/000002/07



EIA Ref: 17/2/3 N-93
SMS Ref: AFG/del/05-10-11

South African Heritage Resources Agency (SAHRA)
PO Box 4637
Cape Town
8000

Attention: Mr. Phillip Hine

APPLICATION FOR ENVIRONMENTAL AUTHORIZATION: EXPANSION OF THE AFGRI ABATTOIR OUTSIDE OF DELMAS LOCATED ON PORTION 21 OF THE FARM GELUK 234 IR, DELMAS.

AFGRI Poultry (Pty) Ltd. has initiated a Basic Assessment Process to obtain Environmental Authorization from the Mpumalanga Department of Economic Development, Environment and Tourism (DEDET) for the proposed expansion of their Delmas abattoir situated on Portion 21 of the farm Geluk 234 IR, Delmas, Mpumalanga.

The proposed abattoir expansion project will require environmental authorization subject to a Basic Assessment Process as required by Sections 21 to 25 of Government Notice R 543 of the EIA Regulations of 18 June 2010.

Shangoni Management Services (Pty) Ltd. was appointed as the Independent Environmental Assessment Practitioner (EAP) responsible for the Basic Assessment Procedure.

Attached please find a background information document, map of the site and a stakeholder registration form in respect of the application. Your written comments on this expansion project will be appreciated. In order to process your inputs, all written comments must reach our offices by **14 NOVEMBER 2011**. In the event of you not wishing to comment on this application, it will be appreciated if we could receive a written confirmation thereof to enable us to continue with the application.

Please do not hesitate to contact the undersigned should you require any additional information.

Contact Details: Shangoni Management Services
Miss. Isabel Hough
E-mail: isabelhough@shangoni.co.za
Cell: 079 534 4303
Fax 2 E-mail: 086 643 5360
Fax: 012 807 1014
Online Participation: Go to www.shangoni.co.za and click on Public Participation.

Yours Faithfully,

Miss. Isabel Hough
Environmental Assessment Practitioner

APPLICATION FOR ENVIRONMENTAL AUTORIZATION: PROPOSED EXPANSION OF THE AFGRI POULTRY ABATTOIR OUTSIDE OF DELMAS

VICTOR KHANYE (DELMAS) LOCAL MUNICIPALITY, MPUMALANGA

OCTOBER 2011

EIA Ref: 17/2/3 N-93



1. INTRODUCTION

The applicant (AFGRI Poultry (Pty) Ltd.) has initiated an Environmental Authorization process for the proposed expansion to the AFGRI Poultry abattoir outside of Delmas.

2. LEGAL REQUIREMENTS

In accordance with the regulations published in Government Notice R 543 and R 544 of 18 June 2010, in terms of section 24D of the National Environmental Management Act (Act No. 107 of 1998), the developer is required to carry out a Basic Environmental Assessment for the following activities:

GNR 544 of 18 June 2010 (Basic Assessment):

Activity 30: The expansion of facilities for the slaughter of animals where the daily product throughput will be increased by more than:
(i) 50 poultry.

3. ENVIRONMENTAL ASSESSMENT PRACTITIONER

Shangoni Management Services (Pty) Ltd was appointed by the applicant as the independent Environmental Assessment Practitioner (EAP) to undertake the Environmental Impact Assessment process.

4. SITE DESCRIPTION

4.1 Property Description: Portion 21 of the farm Geluk 234 IR, Mpumalanga.

4.2 Location: The project site is located approximately 4.6km, as the crow flies, to the North-west of Delmas. When travelling on the R50 from Delmas to Pretoria, the site is on the left-hand side, approximately 4.6km from Delmas.

5. DESCRIPTION OF PROPOSED ACTIVITY

The proposed development is the expansion of the AFGRI Poultry Delmas Abattoir facility located outside of Delmas. The aim of the expansion is to increase the current capacity of the abattoir so that a processing rate of 1 (one) million chickens per week can be accommodated.

The development will add approximately 1 500m² to the current development footprint of the abattoir facility.



Figure 1: The AFGRI Poultry Delmas Abattoir.



Figure 2: Location of the proposed expansion project.

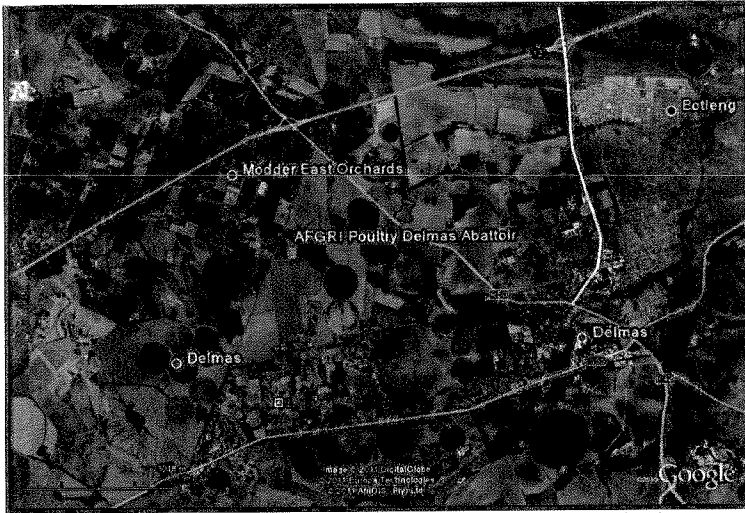


Figure 3: Location of the proposed expansion project showing surrounding towns and roads.

6. PUBLIC PARTICIPATION PROCESS

Public participation is an integral part of the Basic Assessment process, and will include the following components:

First part of the Public Participation:

The primary purpose of this phase is to give potential interested and affected parties (I&APs) an opportunity to register as an interested or affected party and to submit comments and concerns. These comments and concerns are included in the Basic Assessment Report.

Comment on the Basic Assessment Report:

The Basic Assessment Report will be made available to registered I&APs, to provide an opportunity to comment in writing on this document when concluded before it is submitted to the competent authority. All comments received will be included in a comments and response report compiled by the Environmental Assessment Practitioner. This report will describe the issue raised, the date it was raised and by whom, and how the issue will be, or has been dealt with.

The comments that are received on the Basic Assessment Report are included in the final report prior to submission to the Mpumalanga Department of Economic Development, Environment and Tourism.

Online Participation: For online registrations, submission of comments and review of project related documentation:

1. Go to www.shangoni.co.za
2. Click on public participation
3. Select project of interest
4. Register as a stakeholder under "Registration"
5. Submit comment/concern electronically
6. All available project related documentation is available for perusal throughout the process
7. As project progresses, notices will be placed under the notices/updates tab

8. If you are registered you will receive an e-mail to inform you of any new developments with regards to the project and also when the report is available for public review.

Contact Details of EAP

Your participation is important for the process. If you would like to be added to our database of stakeholders who wish to participate in this process, or should you have any queries regarding the process or comments about the proposed development, please contact Miss Isabel Hough (details below) before or on 14 November 2011.

Contact details:

Shangoni Management Services (Pty) Ltd.

Postal address:

Po Box 74726
Lynnwood Ridge
Pretoria
0040

Tel: 012 807 7036

Cell: 079 534 4303

Fax: 012 807 1014

Fax to e-mail: 086 578 9670

Email: isabelhough@shangoni.co.za

For online participation go to www.shangoni.co.za and click on Public Participation.



STAKEHOLDER REGISTRATION FORM

THE PROPOSED EXPANSION OF THE AFGRI ABATTOIR OUTSIDE DELMAS LOCATED ON PORTION 21 OF THE FARM GELUK 234 IR, MPUMALANGA

PLEASE E-MAIL / FAX THIS FORM TO MISS ISABEL HOUGH: isabelhough@shangoni.co.za / 086 578 9670 / 012 807 1014
EIA Ref Nr: 17/2/3 N-93

NAME	
SURNAME	
INITIALS	
TITLE	
<u>CONTACT DETAILS</u>	
<u>HOME / PRIVATE</u>	
TEL (H)	
CELL (1)	
EMAIL	
FAX (H)	
FAX 2 E-MAIL	
POSTAL ADDRESS	
PHYSICAL ADDRESS	
<u>WORK</u>	
TEL (W)	
CELL (W)	
EMAIL	
FAX (W)	
FAX 2 E-MAIL	
POSTAL ADDRESS	
PHYSICAL ADDRESS	

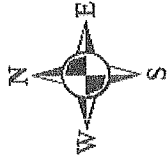
COMMENTS / INPUT / OBJECTIONS

E-MAIL / FAX TO MISS. ISABEL HOUGH
isabelhough@shangoni.co.za / 086 578 9670 / 012 807 1014



A large rectangular area with horizontal lines, intended for writing comments, input, or objections.

Locality Map



Legend

- Abattoir

GCS_WGS_1984
Datum: D_WGS_1984

