

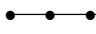














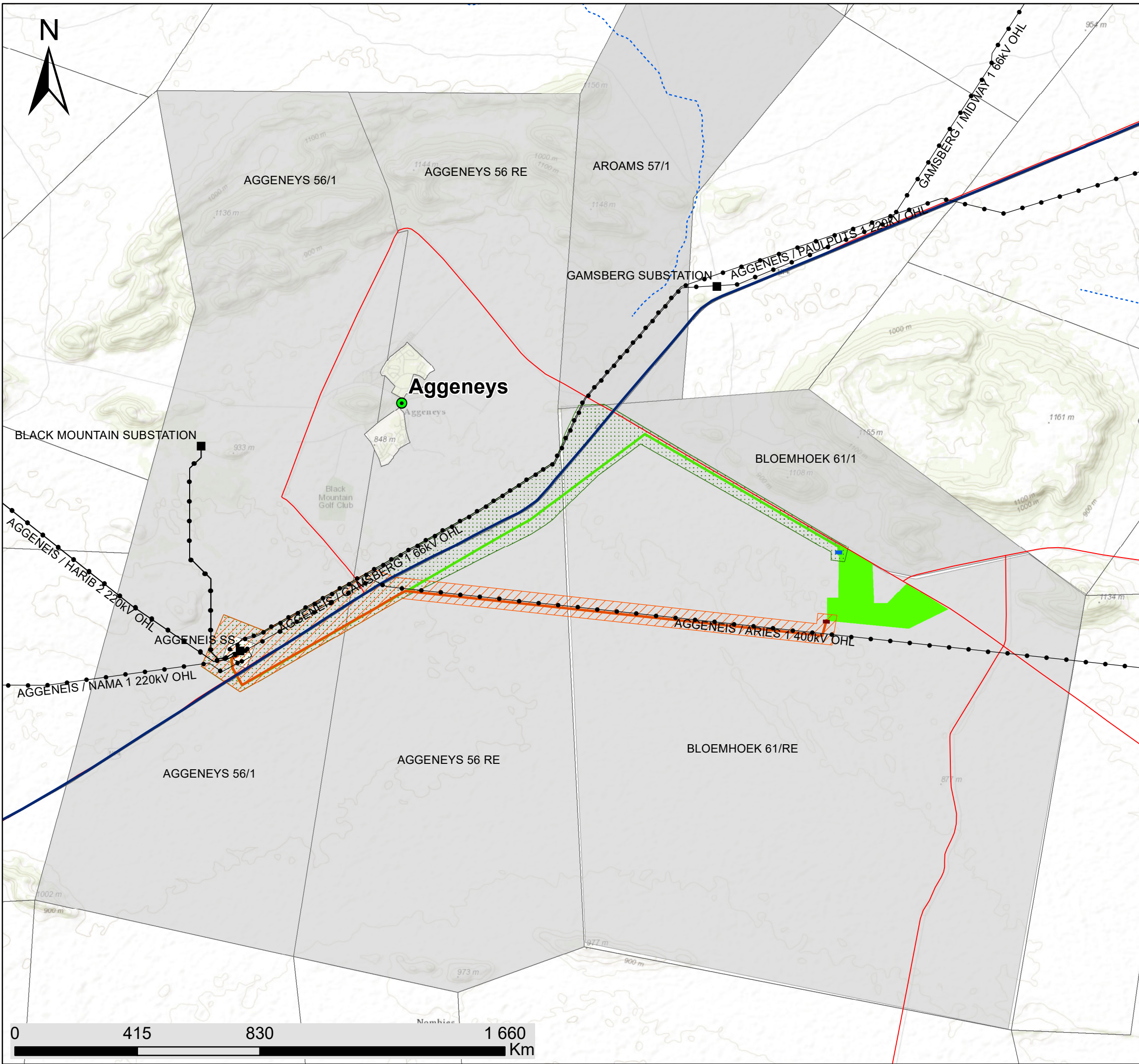


# Grid connection infrastructure for the Aggeneys 2 Solar PV facility, Northern Cape

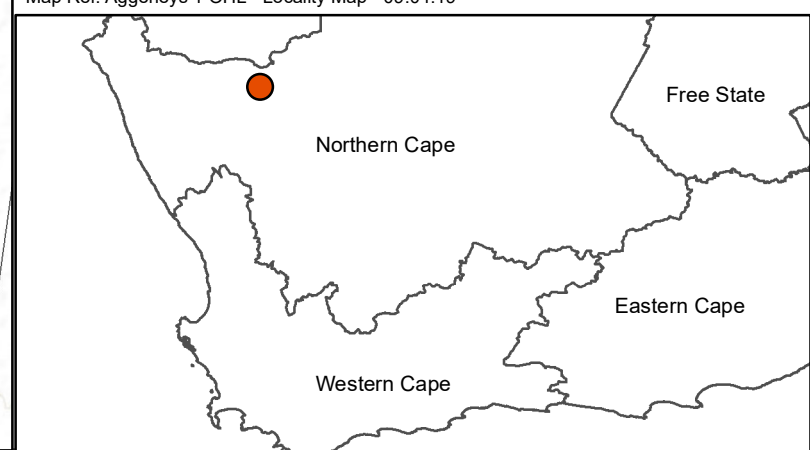
## Locality Map

### Legend

-  Town
-  Eskom Substation
-  Existing Power Line
-  National Route
-  Main Road
-  Non-perennial River
-  Power Line Alternative 1 (preferred)
-  Power Line Alternative 2
-  Collector Substation Alternative 1 (preferred)
-  Collector Substation Alternative 2
-  Power Line Corridor Alternative 1
-  Power Line Corridor Alternative 2
-  Aggeneys 2 Project Site (250ha)
-  Affected Properties
-  Farm Portion



Scale: 1:12 579 333  
 Projection: LO19  
 Map Ref: Aggeneys 1 OHL - Locality Map - 09.04.19



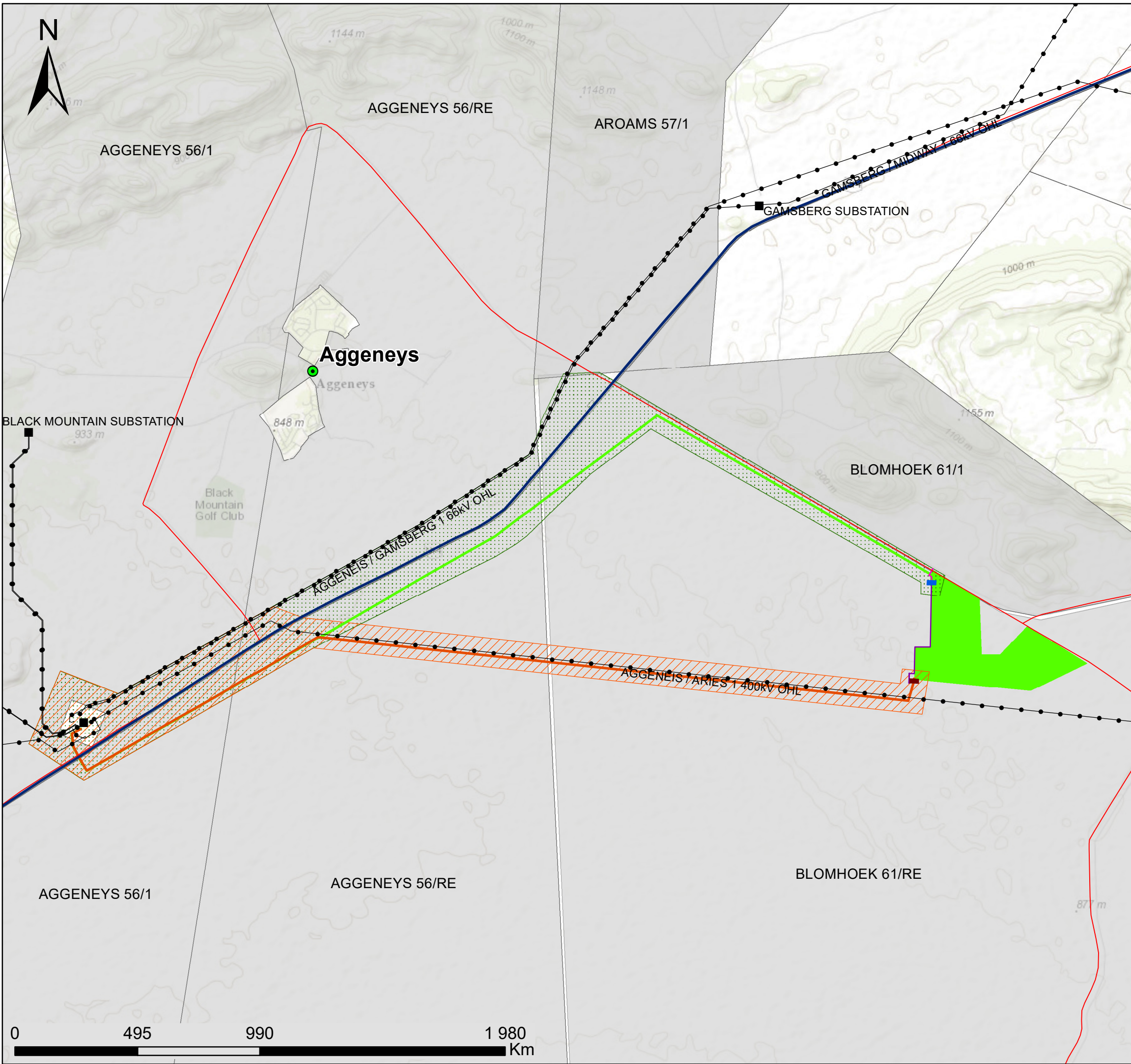


# Grid connection infrastructure for the Aggeneys 2 solar PV facility, Northern Cape

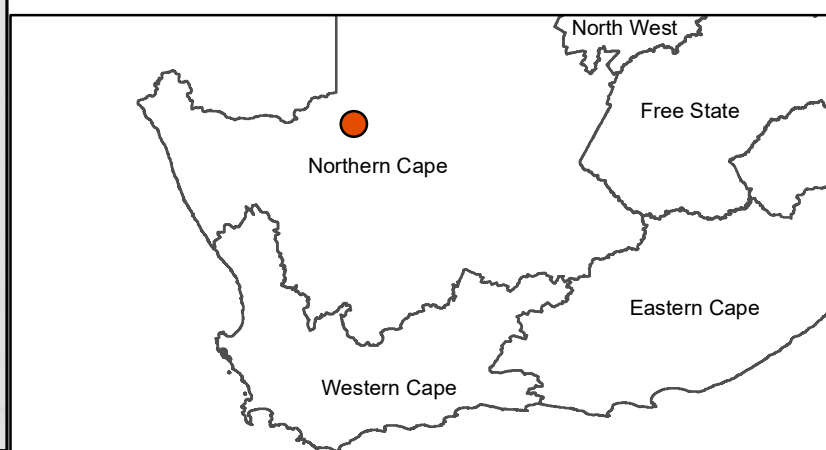
## Layout Map

### Legend

- Town
- Eskom Substation
- Existing Power Line
- National Route
- Main Road
- Power Line Alternative 1
- Power Line Alternative 2
- Collector Substation Access Road Alternative 1
- Collector Substation Access Road Alternative 2
- Collector Substation Alternative 1
- Collector Substation Alternative 2
- Power Line Corridor Alternative 1
- Power Line Corridor Alternative 2
- Aggeneys 2 Project Site (250ha)
- Affected Properties
- Farm Portion



Scale: 1:15 000 000  
 Projection: LO19  
 Map Ref: Aggeneys 1 PV - Locality Map - 28.11.18





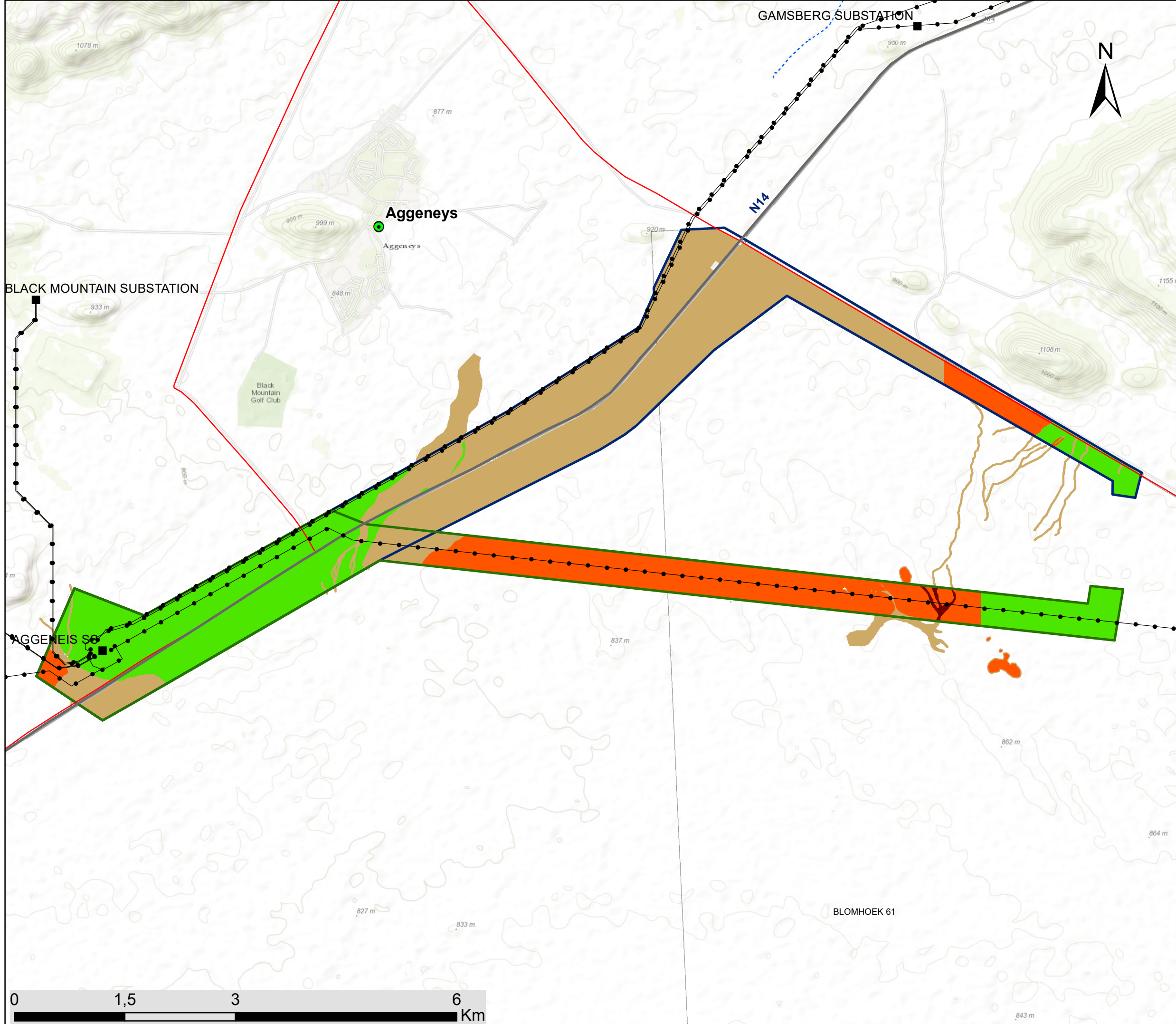
# Grid connection infrastructure for Aggeneys 2 Solar PV Facility, Northern Cape

## Environmental Sensitivity Map

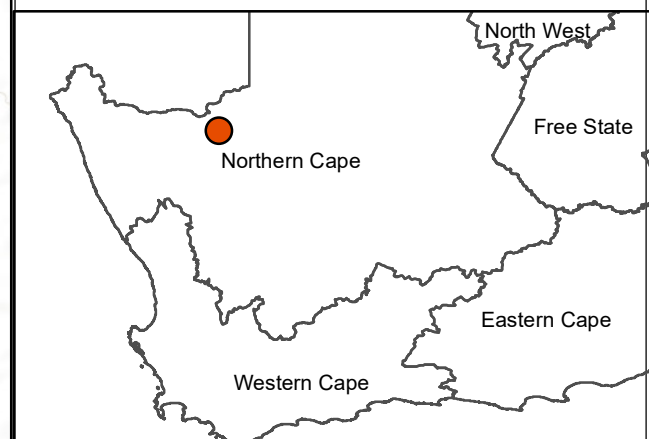


### Legend

- Town
  - Eskom Substation
  - Existing Power Line
  - National Route
  - Main Road
  - Power Line Corridor Alternative 1
  - Power Line Corridor Alternative 2
- ### Environmental Sensitivities
- Very High Sensitivity (Ecological)
  - High Sensitivity (Ecological, Avifauna and Watercourses)
  - Moderate Sensitivity (Ecological, Avifauna and Watercourses)
  - Low Sensitivity (Ecological and Avifauna)



Scale: 1:48 714  
Projection: LO19  
Map Ref: Aggeneys Powerline - Sensitivity Map - 23.04.19





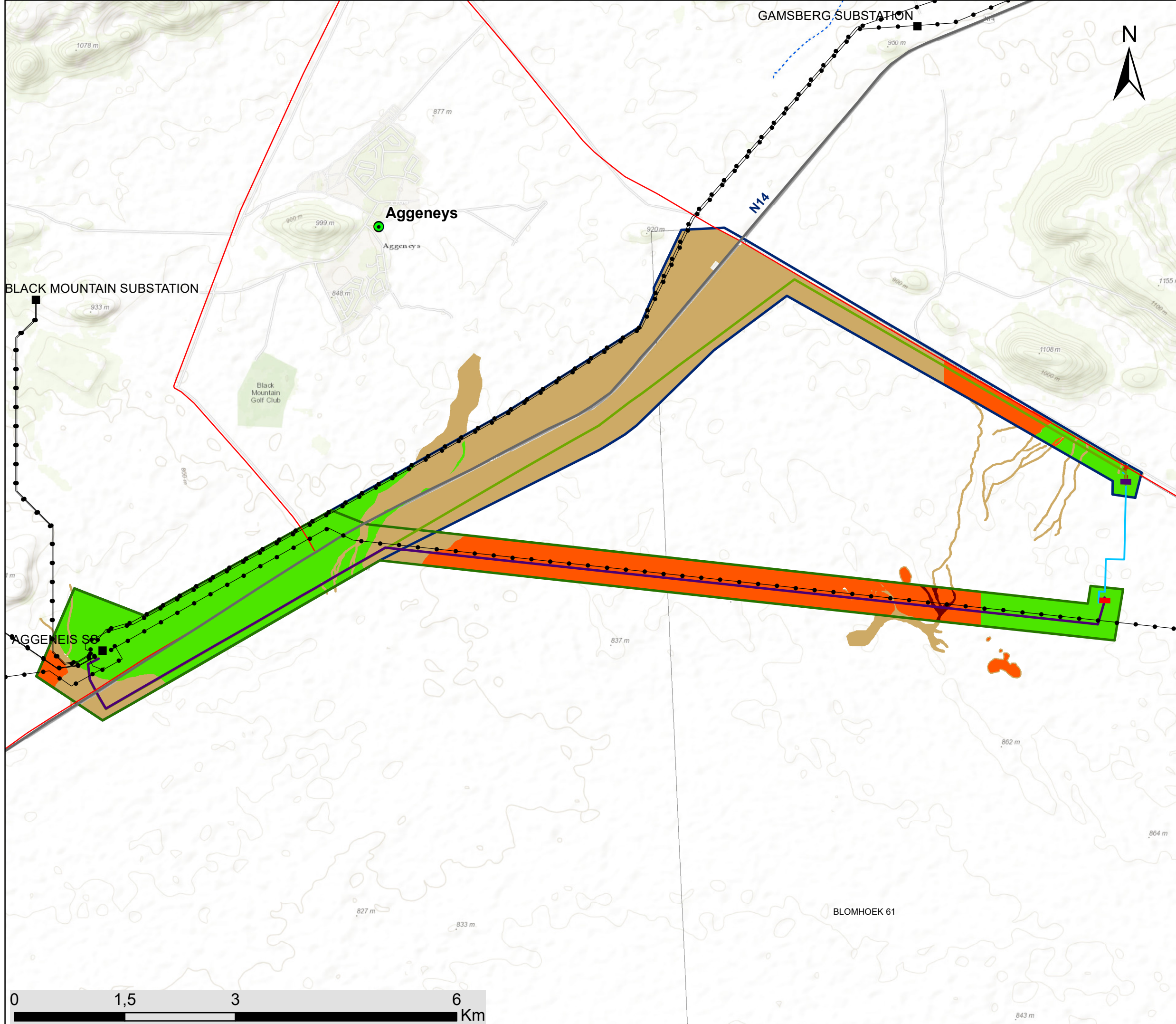
# Grid connection infrastructure for Aggeneys 2 Solar PV Facility, Northern Cape

## Environmental Sensitivity and Layout Map

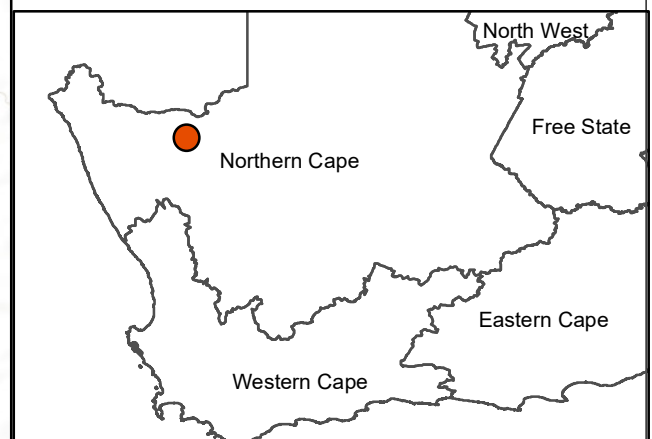


### Legend

- Town
  - Eskom Substation
  - Existing Power Line
  - National Route
  - Main Road
- ### Layout
- Power Line Alternative 1
  - Power Line Alternative 2
  - Collector Substation Access Road Alternative 2
  - Collector Substation Access Road Alternative 1
  - Collector Substation Alternative 1
  - Collector Substation Alternative 2
  - Power Line Corridor Alternative 1
  - Power Line Corridor Alternative 2
- ### Environmental Sensitivities
- Very High Sensitivity (Ecological)
  - High Sensitivity (Ecological, Avifauna and Watercourses)
  - Moderate Sensitivity (Ecological, Avifauna and Watercourses)
  - Low Sensitivity (Ecological and Avifauna)



Scale: 1:48 714  
 Projection: LO19  
 Map Ref: Aggeneys Powerline - Layout and Sensitivity Map - 23.04.19





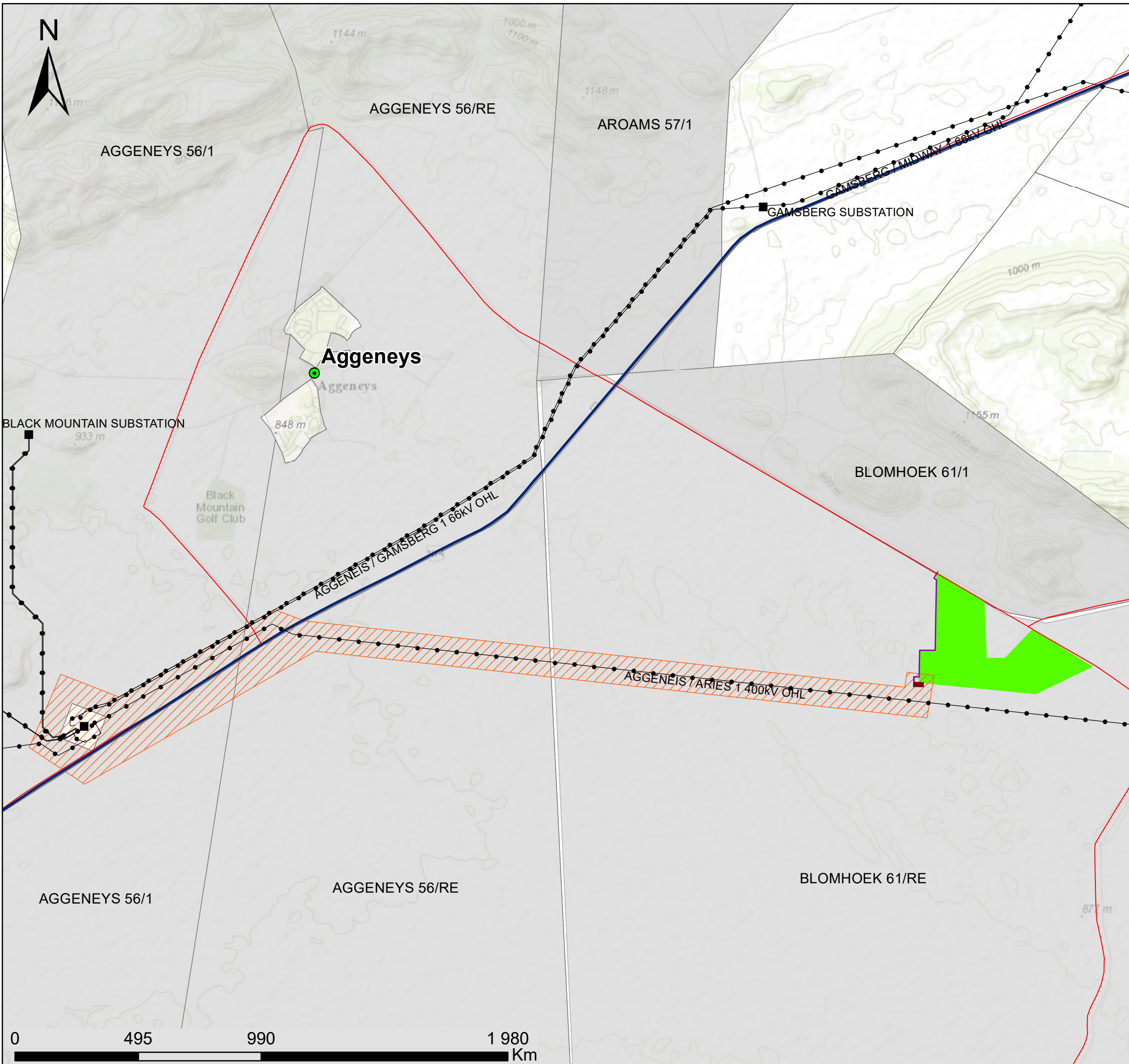
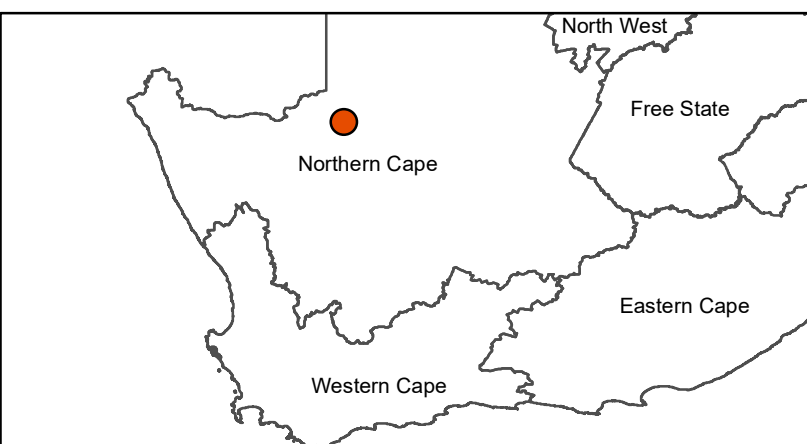
# Grid connection infrastructure for the Aggeneys 2 solar PV facility, Northern Cape

## Preferred Layout Map

### Legend

- Town
- Eskom Substation
- Existing Power Line
- National Route
- Main Road
- Collector Substation Access Road Alternative 1
- Collector Substation Alternative 1
- Power Line Corridor Alternative 1
- Aggeneys 2 Project Site (250ha)
- Affected Properties
- Farm Portion

Scale: 1:15 000 000  
 Projection: LO19  
 Map Ref: Aggeneys 1 PV - Locality Map - 28.11.18





**Appendix L: Site Coordinates**

*Corner point coordinates for Development Corridor Alternative 1 (preferred):*

<b>Coordinates</b>		
	<b>Latitude (S)</b>	<b>Longitude (E)</b>
<b>01 (Northern most point (moving in a clockwise direction))</b>	29° 16' 46,717" S	18° 50' 6,669" E
<b>02</b>	29° 16' 52,546" S	18° 50' 23,693" E
<b>03</b>	29° 17' 27,490" S	18° 56' 26,404" E
<b>04</b>	29° 17' 20,052" S	18° 56' 27,618" E
<b>05</b>	29° 17' 21,538" S	18° 56' 44,100" E
<b>06</b>	29° 17' 44,124" S	18° 56' 39,675" E
<b>07</b>	29° 17' 8,663" S	18° 50' 31,326" E
<b>08</b>	29° 18' 18,820" S	18° 48' 10,857" E
<b>09</b>	29° 17' 59,402" S	18° 47' 37,661" E
<b>10</b>	29° 17' 20,610" S	18° 47' 56,784" E
<b>11</b>	29° 17' 32,598" S	18° 48' 31,875" E

*Corner point coordinates for Development Corridor Alternative 2:*

<b>Coordinates</b>		
	<b>Latitude (S)</b>	<b>Longitude (E)</b>
<b>01 (Northern most point (moving in a clockwise direction))</b>	29° 14' 42,101" S	18° 53' 23,896" E
<b>02</b>	29° 16' 30,138" S	18° 56' 53,453" E
<b>03</b>	29° 16' 41,265" S	18° 56' 50,179" E
<b>04</b>	29° 16' 39,819" S	18° 56' 38,734" E
<b>05</b>	29° 16' 33,759" S	18° 56' 38,672" E
<b>06</b>	29° 15' 12,324" S	18° 53' 55,524" E
<b>07</b>	29° 15' 36,105" S	18° 53' 18,505" E
<b>08</b>	29° 16' 8,949" S	18° 52' 39,882" E
<b>09</b>	29° 16' 19,280" S	18° 52' 22,295" E
<b>10</b>	29° 17' 8,663" S	18° 50' 31,326" E
<b>11</b>	29° 18' 18,820" S	18° 48' 10,857" E
<b>12</b>	29° 17' 59,402" S	18° 47' 37,661" E
<b>13</b>	29° 17' 20,610" S	18° 47' 56,784" E
<b>14</b>	29° 17' 32,598" S	18° 48' 31,875" E
<b>15</b>	29° 15' 25,793" S	18° 52' 41,057" E
<b>16</b>	29° 15' 11,171" S	18° 52' 48,304" E
<b>17</b>	29° 15' 8,713" S	18° 52' 48,179" E
<b>18</b>	29° 14' 43,043" S	18° 53' 2,037" E

*Access road*

<b>Coordinates</b>		
	<b>Latitude (S)</b>	<b>Longitude (E)</b>
<b>Start (Main road)</b>	29° 16' 26,811" S	18° 56' 46,249" E
<b>Middle</b>	29° 17' 2,065" S	18° 56' 44,819" E
<b>End</b>	29° 17' 27,492" S	18° 56' 31,623" E