

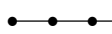






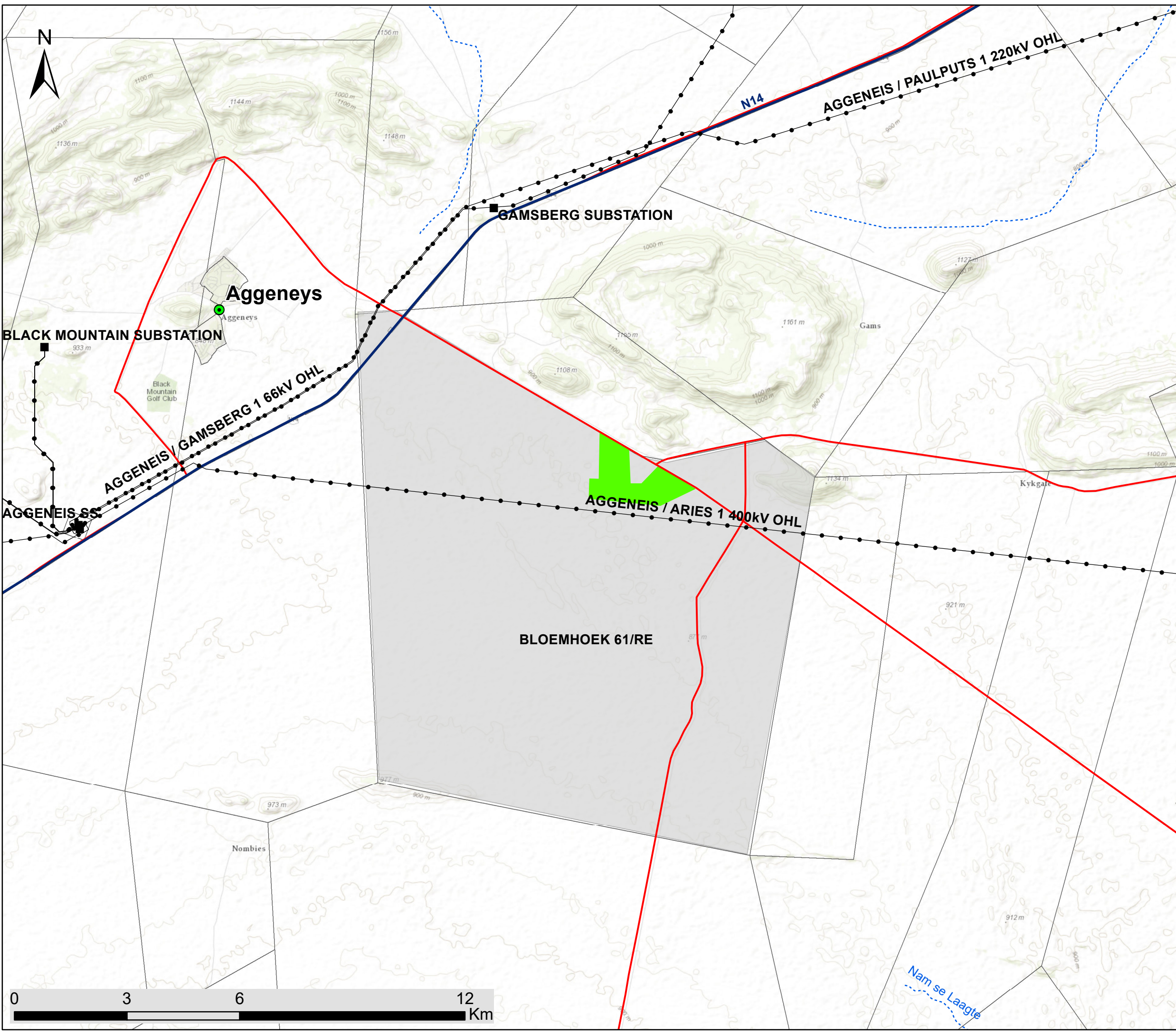


Aggeneys 2 – 100MW Solar Facility and associated infrastructure, Northern Cape

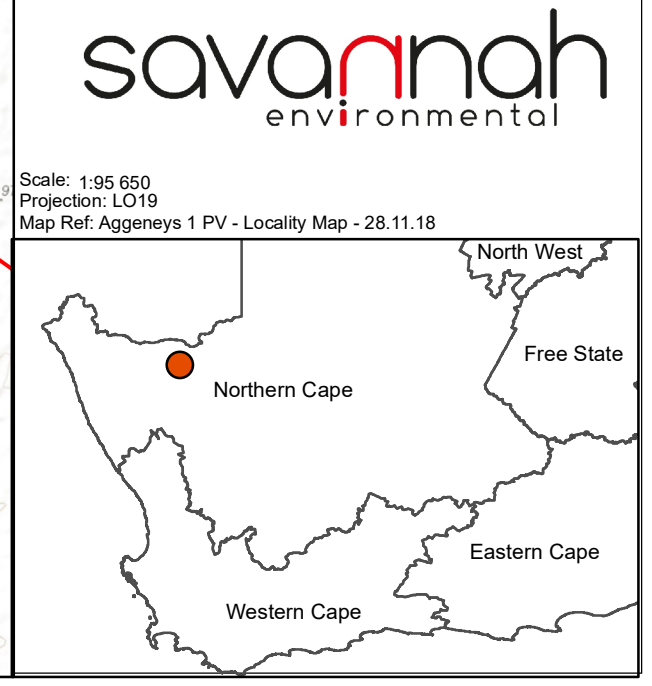
Locality Map

Legend

-  Town
-  Eskom Substation
-  Existing Power Line
-  Main Road
-  National Route
-  Non-perennial River
-  Project Site (250ha)
-  Affected Property (12 226 ha)
-  Farm Portion



Scale: 1:95 650
 Projection: LO19
 Map Ref: Aggeneys 1 PV - Locality Map - 28.11.18



Aggeneys 2 – 100MW Solar Facility and associated infrastructure, Northern Cape

Layout Map

Legend

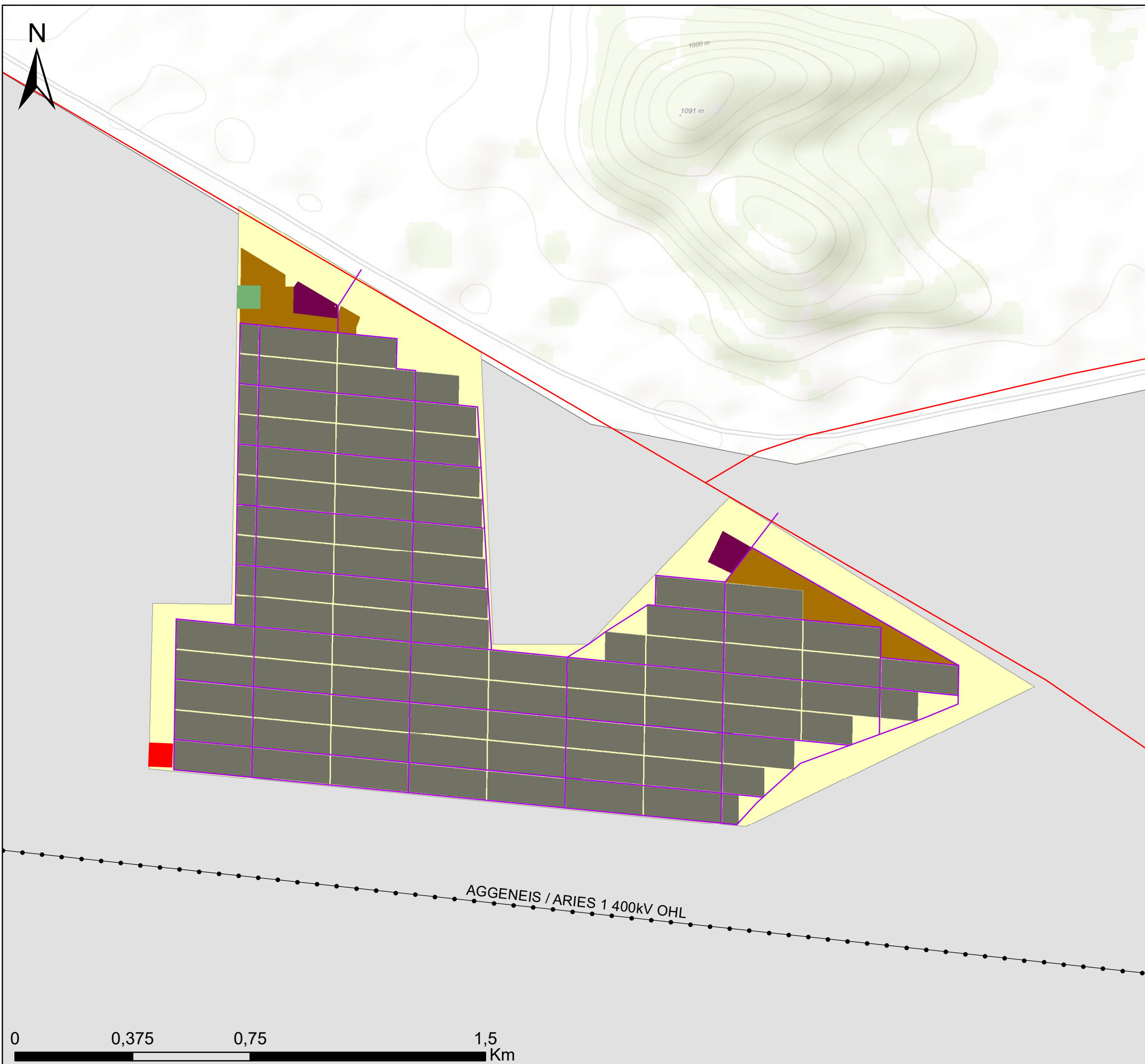
- Existing Power Line
- Main Road
- Project Site (250ha)
- Study Area (12 226ha)

Layout

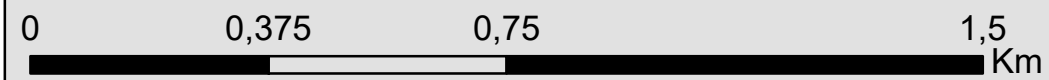
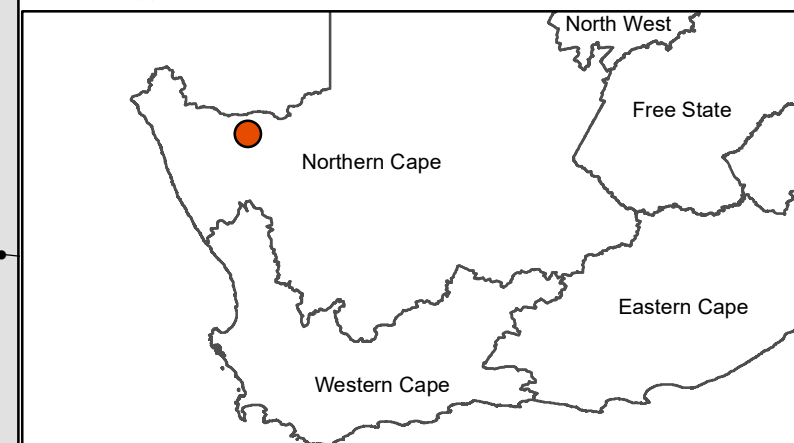
- Internal Access Roads
- Solar Field
- Laydown Area
- O&M block

Substation Alternatives

- Substation Alternative 1
- Substation Alternative 2



Scale: 1:11 908
Projection: LO19
Map Ref: Aggeneys 1 PV - Layout Map - 10.04.19



Aggeneys 2 – 100MW Solar Facility and associated infrastructure, Northern Cape

Environmental Sensitivity and Layout Map



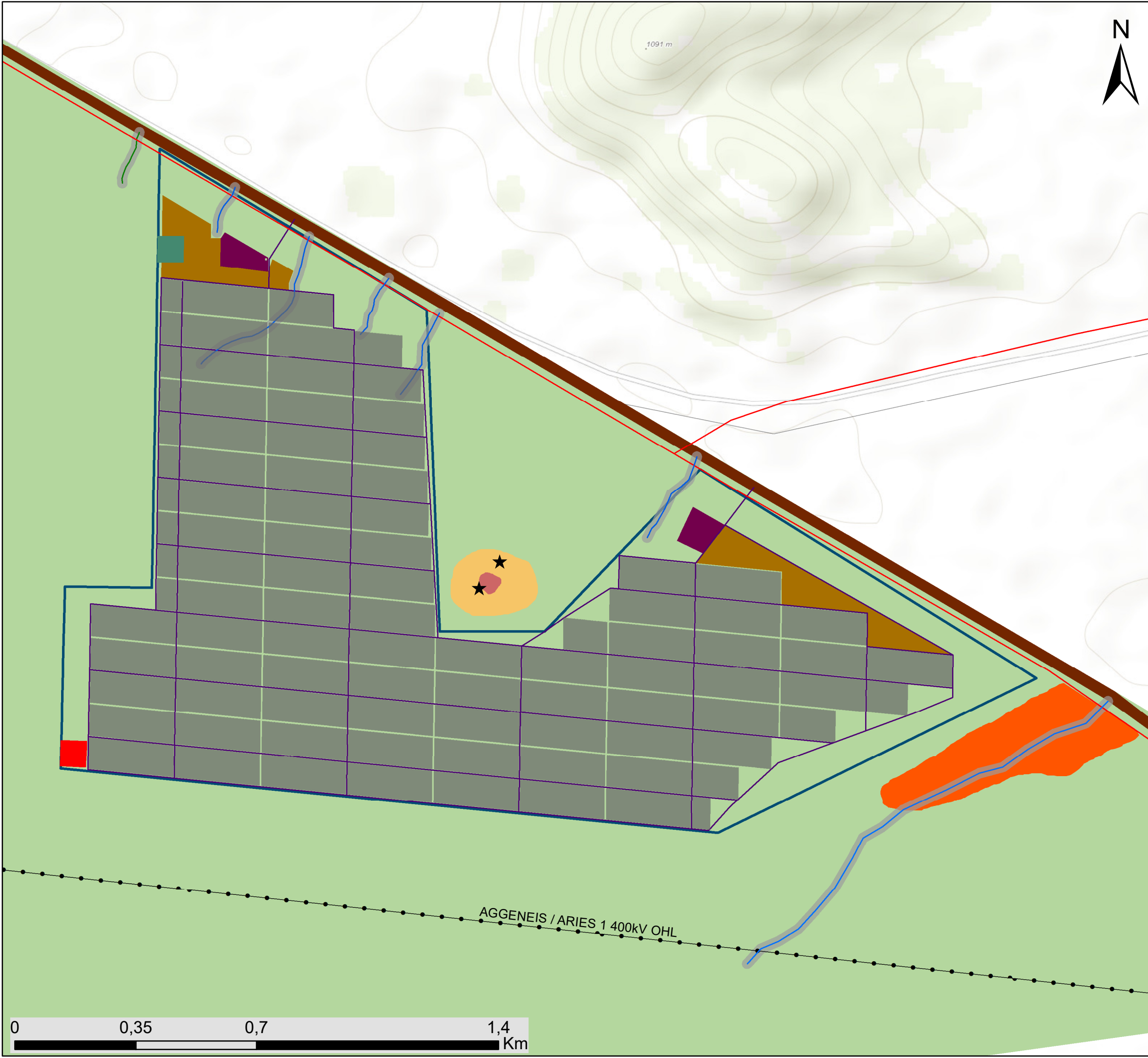
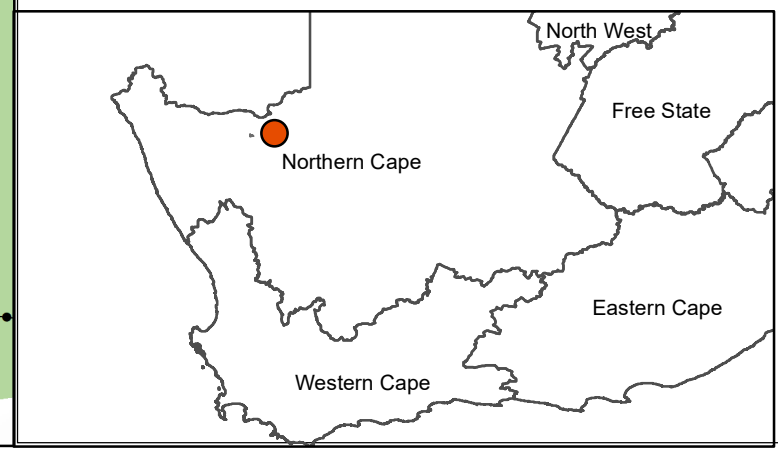
Legend

- Existing Power Line
- Main Road
- Internal Access Roads
- Solar Field
- Substation Alternative 1
- Substation Alternative 2
- O&M block
- Laydown Area
- Project Site (250a)

Environmental Sensitivities

- Rock Cairn; likely grave (No-go Heritage Area)
- Ephemeral Watercourses (Medium Freshwater Sensitivity)
- Ephemeral Watercourse Buffer: 15m (Medium Freshwater Sensitivity)
- Rocky Outcrop (High Ecological and Avifauna Sensitivity)
- Rocky Outcrop Buffer (Medium Ecological and Avifauna Sensitivity)
- Wash (Medium Ecological and Avifauna Sensitivity)
- Plains (Low Ecological and Avifauna Sensitivity)
- Road (Transformed Ecological and Avifauna Sensitivity)

Scale: 1:10 687
 Projection: LO19
 Map Ref: Aggeneys 2 PV - Sensitivity Map - 10.04.19



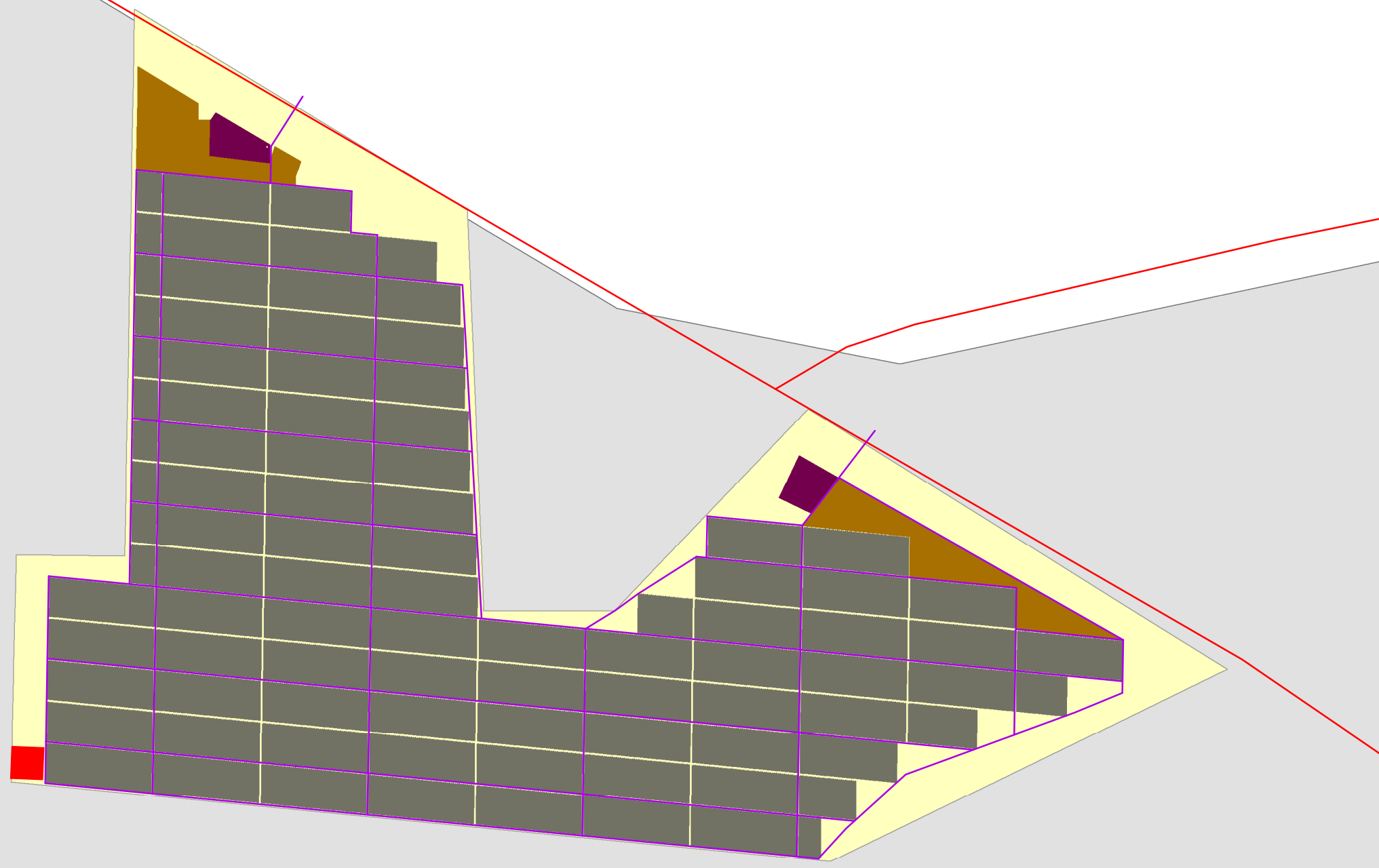


Aggeneys 2 – 100MW Solar Facility and associated infrastructure, Northern Cape

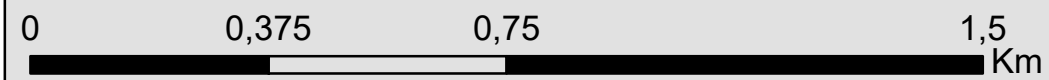
Preferred Layout Map

Legend

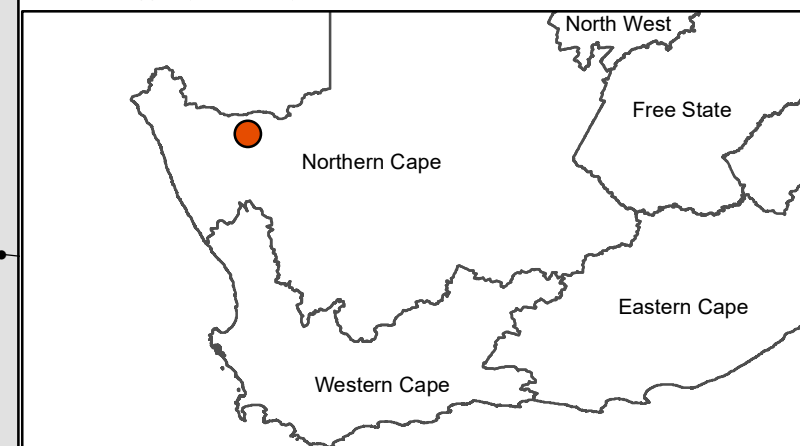
- Existing Power Line
 - Main Road
 - Project Site (250ha)
 - Study Area (12 226ha)
- ### Layout
- Internal Access Roads
 - Solar Field
 - Laydown Area
 - O&M block
 - On-Site Substation Alternative 1



Scale: 1:11 908
Projection: LO19
Map Ref: Aggeneys 1 PV - Layout Map - 10.04.19



AGGENEIS / ARIES 1 400kV OHL



Aggeneys 2 – 100MW Solar Facility and associated infrastructure, Northern Cape

Environmental Sensitivity and Preferred Layout Map



Legend

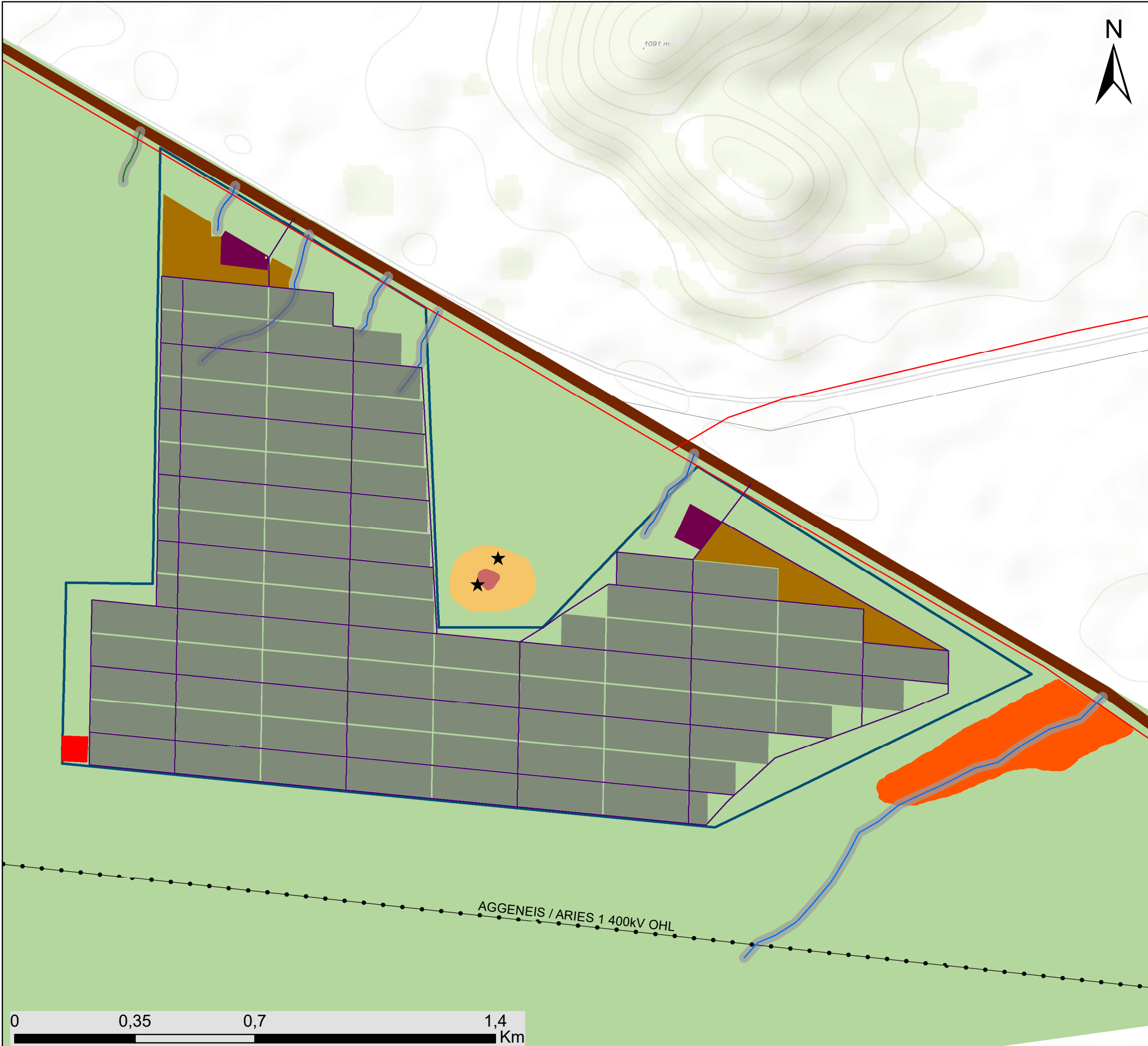
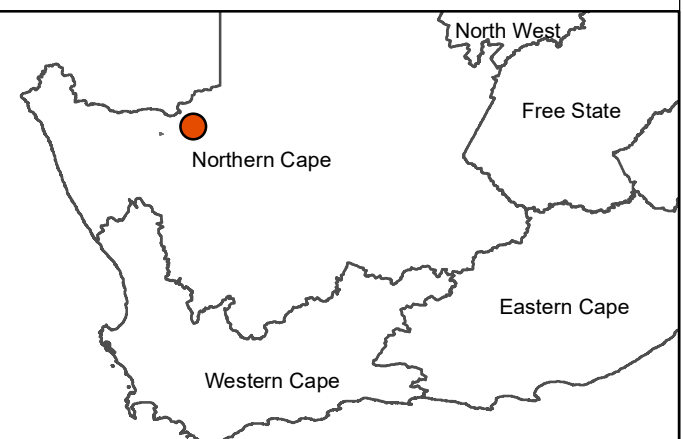
- Existing Power Line
- Main Road
- Internal Access Roads
- Solar Field
- On-Site Substation Alternative 1
- O&M block
- Laydown Area
- Project Site (250a)

Environmental Sensitivities

- Rock Cairn; likely grave (No-go Heritage Area)
- Ephemeral Watercourses (Medium Freshwater Sensitivity)
- Ephemeral Watercourse Buffer: 15m (Medium Freshwater Sensitivity)
- Rocky Outcrop (High Ecological and Avifauna Sensitivity)
- Rocky Outcrop Buffer (Medium Ecological and Avifauna Sensitivity)
- Wash (Medium Ecological and Avifauna Sensitivity)
- Plains (Low Ecological and Avifauna Sensitivity)
- Road (Transformed Ecological and Avifauna Sensitivity)



Scale: 1:10 687
 Projection: LO19
 Map Ref: Aggeneys 2 PV - Sensitivity Map - 10.04.19



Appendix M: Site Coordinates

Corner point coordinates (Project Site):

Coordinates		
	Latitude (S)	Longitude (E)
01 (Northern most point (moving in a clockwise direction))	29° 16' 27,188" S	18° 56' 45,613" E
02	29° 16' 42,366" S	18° 57' 14,342" E
03	29° 17' 12,600" S	18° 57' 15,632" E
04	29° 17' 12,597" S	18° 57' 26,833" E
05	29° 16' 57,361" S	18° 57' 43,547" E
06	29° 17' 17,004" S	18° 58' 19,548" E
07	29° 17' 31,512" S	18° 57' 45,387" E
08	29° 17' 25,462" S	18° 56' 34,968" E
09	29° 17' 8,346" S	18° 56' 35,475" E
10	29° 17' 8,449" S	18° 56' 44,752" E
Centre Point	29°17'18.55"S	18°57'19.97" E

Substation Alternative 1 coordinates (preferred Alternative):

Coordinates		
	Latitude (S)	Longitude (E)
Centre Point	29° 17' 23,916" S	18° 56' 36,268" E

Substation Alternative 2 coordinates:

Coordinates		
	Latitude (S)	Longitude (E)
Centre point	29° 16' 36,517" S	18° 56' 46,693" E