

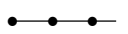






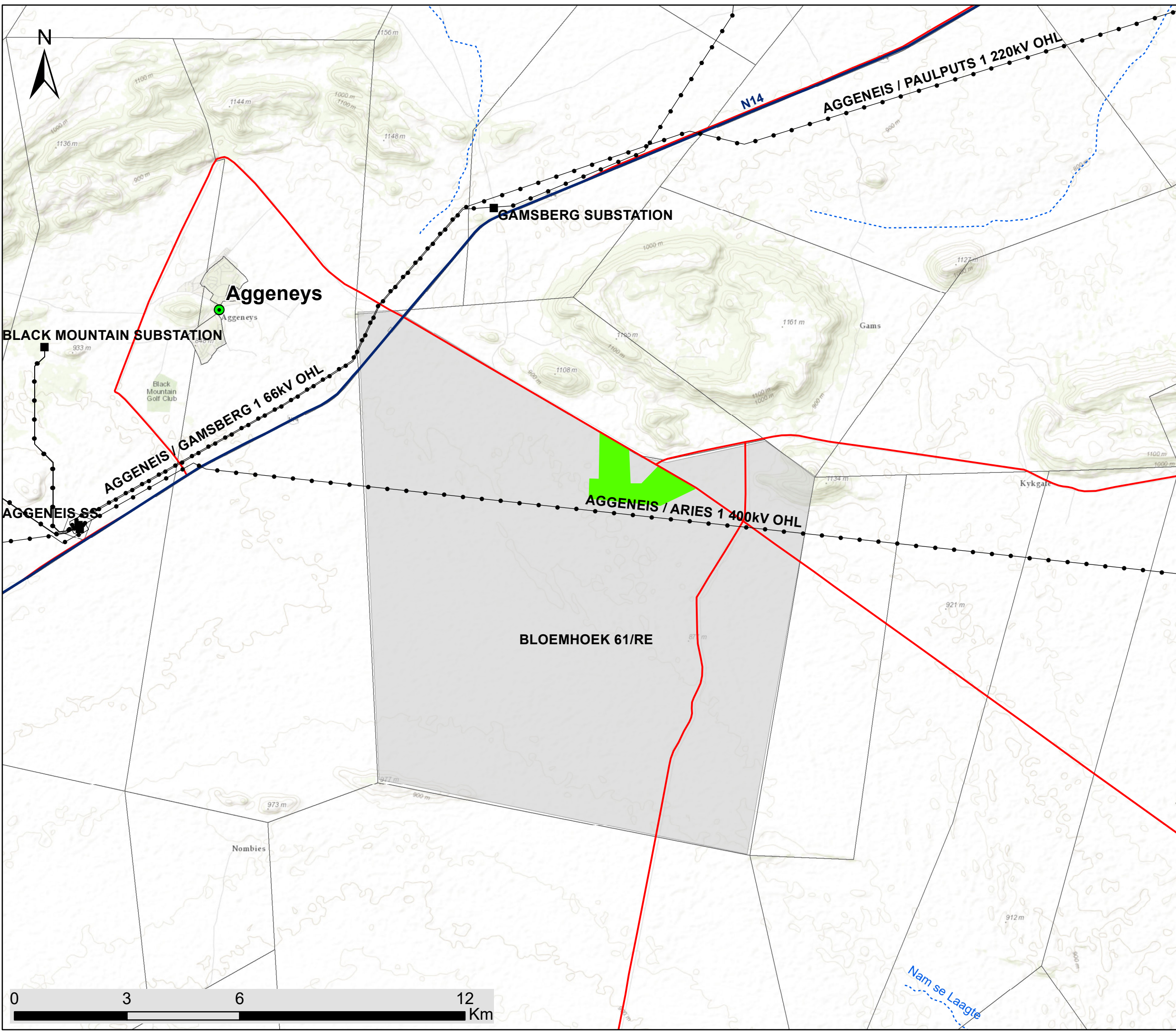


# Aggeneys 2 – 100MW Solar Facility and associated infrastructure, Northern Cape

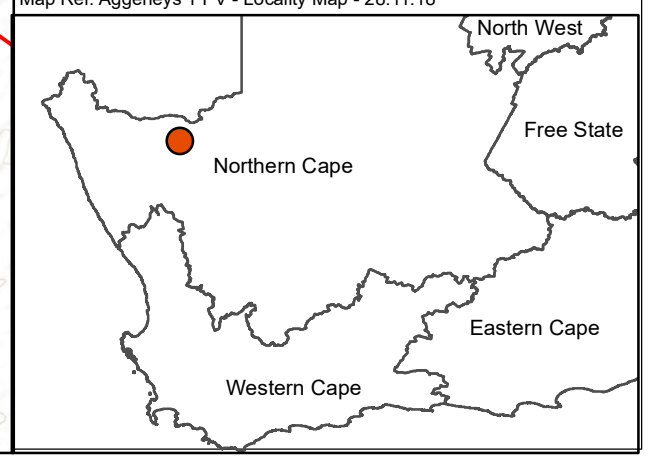
## Locality Map

### Legend

-  Town
-  Eskom Substation
-  Existing Power Line
-  Main Road
-  National Route
-  Non-perennial River
-  Project Site (250ha)
-  Affected Property (12 226 ha)
-  Farm Portion



Scale: 1:95 650  
 Projection: LO19  
 Map Ref: Aggeneys 1 PV - Locality Map - 28.11.18



# Aggeneys 2 – 100MW Solar Facility and associated infrastructure, Northern Cape

## Layout Map

### Legend

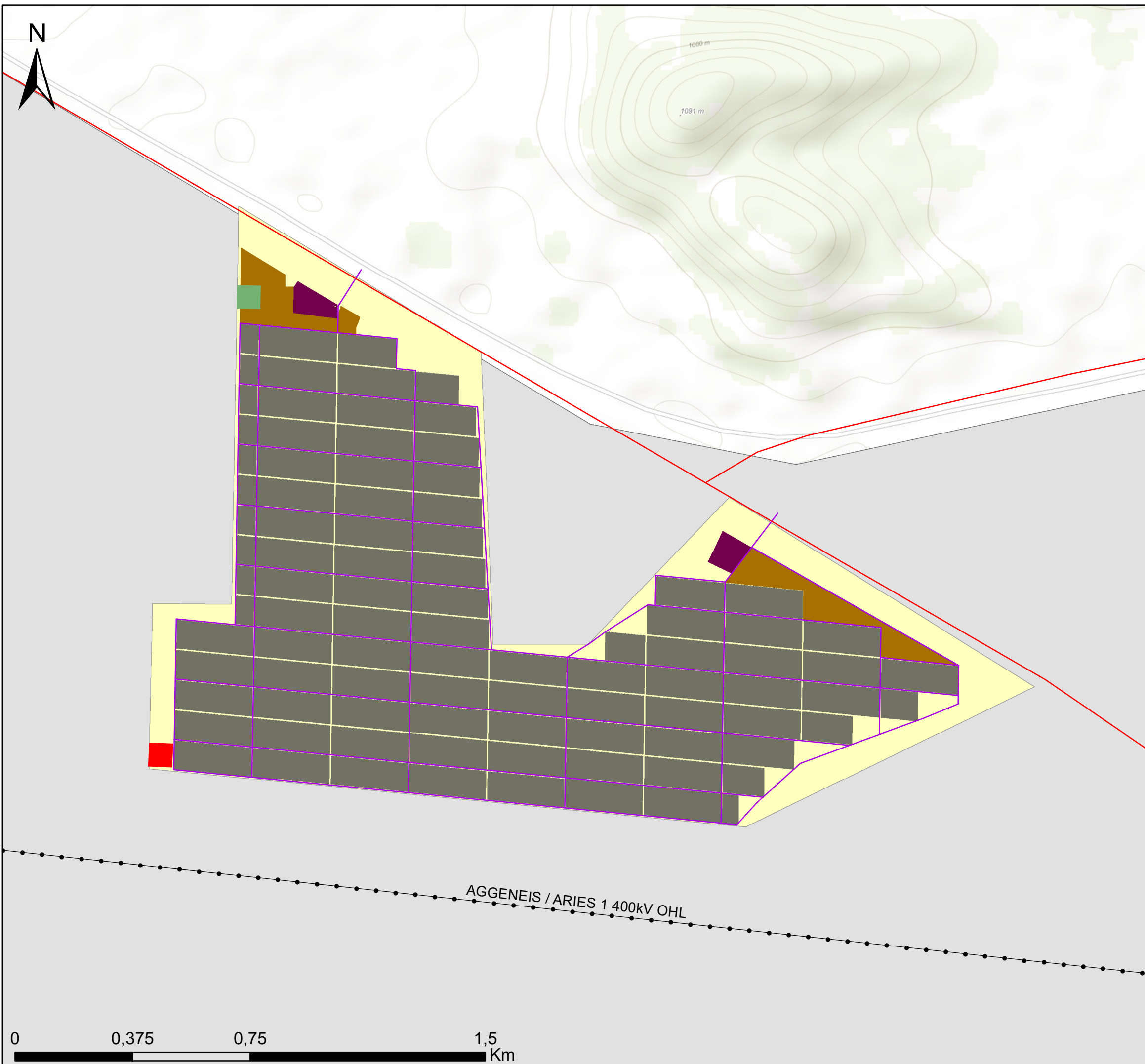
- Existing Power Line
- Main Road
- Project Site (250ha)
- Study Area (12 226ha)

### Layout

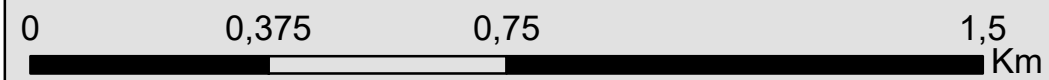
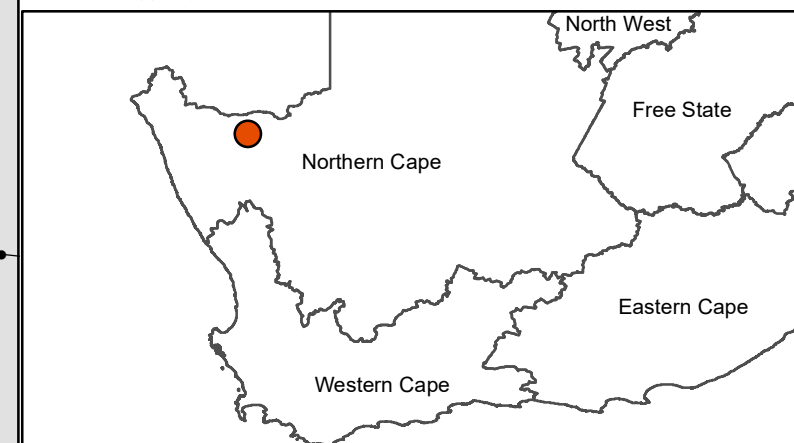
- Internal Access Roads
- Solar Field
- Laydown Area
- O&M block

### Substation Alternatives

- Substation Alternative 1
- Substation Alternative 2



Scale: 1:11 908  
Projection: LO19  
Map Ref: Aggeneys 1 PV - Layout Map - 10.04.19



# Aggeneys 2 – 100MW Solar Facility and associated infrastructure, Northern Cape

## Environmental Sensitivity and Layout Map



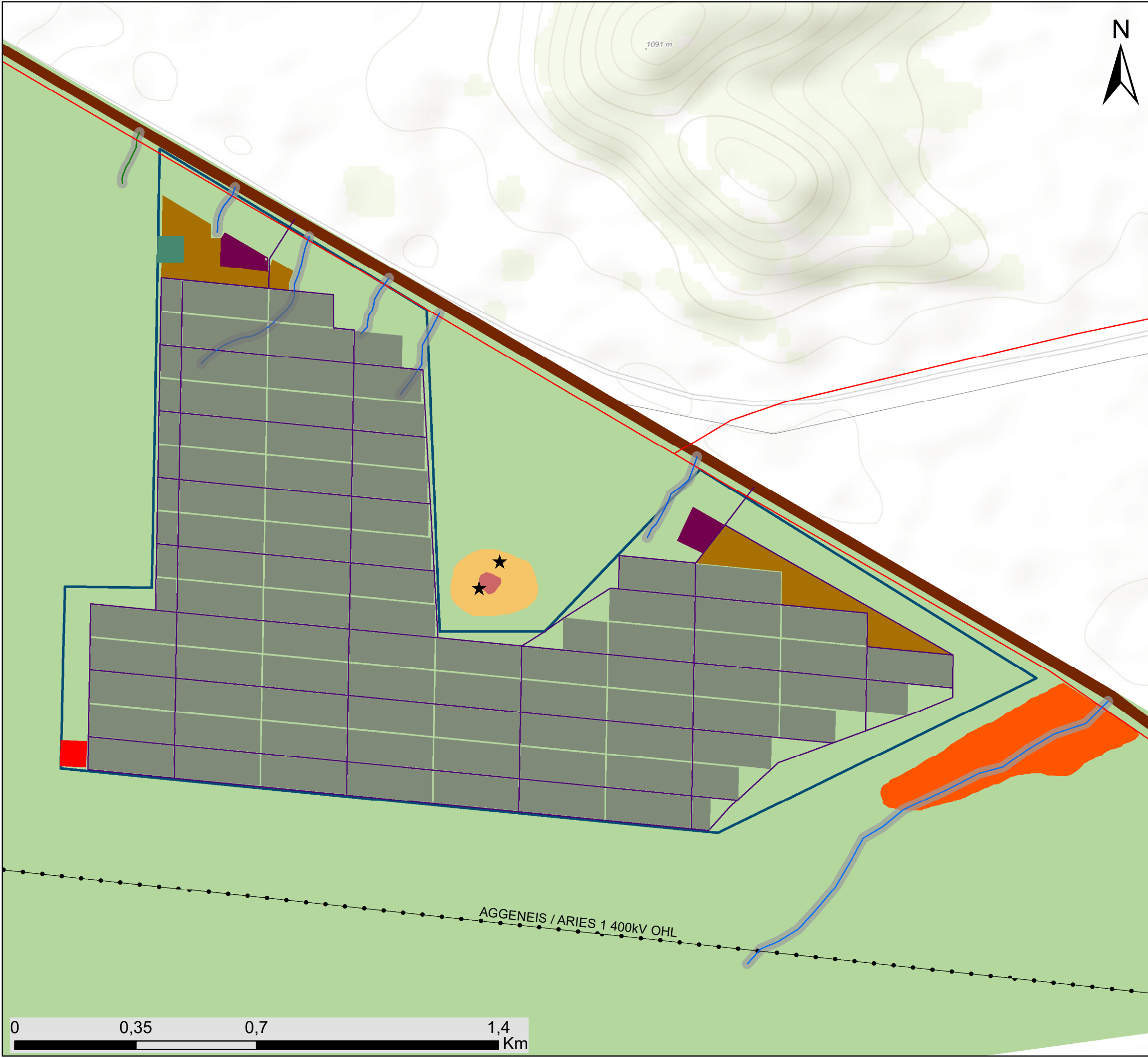
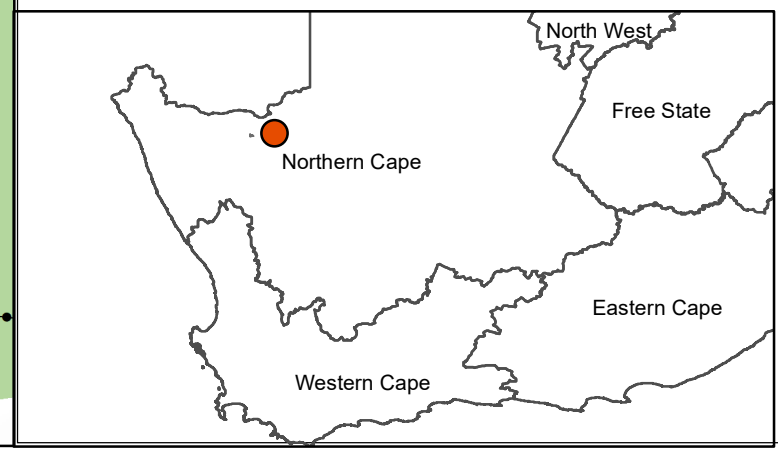
### Legend

- Existing Power Line
- Main Road
- Internal Access Roads
- Solar Field
- Substation Alternative 1
- Substation Alternative 2
- O&M block
- Laydown Area
- Project Site (250a)

### Environmental Sensitivities

- Rock Cairn; likely grave (No-go Heritage Area)
- Ephemeral Watercourses (Medium Freshwater Sensitivity)
- Ephemeral Watercourse Buffer: 15m (Medium Freshwater Sensitivity)
- Rocky Outcrop (High Ecological and Avifauna Sensitivity)
- Rocky Outcrop Buffer (Medium Ecological and Avifauna Sensitivity)
- Wash (Medium Ecological and Avifauna Sensitivity)
- Plains (Low Ecological and Avifauna Sensitivity)
- Road (Transformed Ecological and Avifauna Sensitivity)

Scale: 1:10 687  
 Projection: LO19  
 Map Ref: Aggeneys 2 PV - Sensitivity Map - 10.04.19



AGGENEIS / ARIES 1 400kV OHL

1091 m

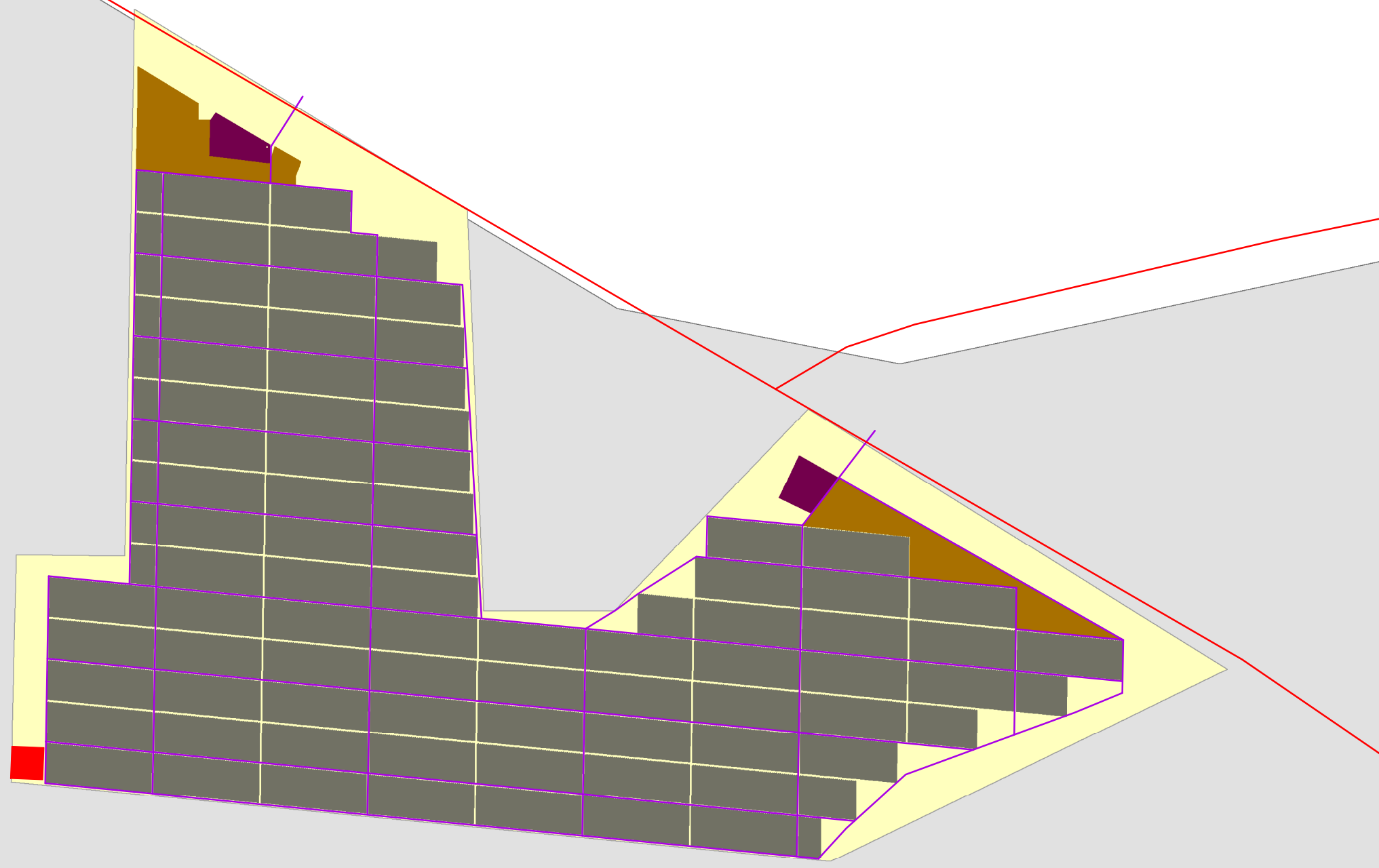


# Aggeneys 2 – 100MW Solar Facility and associated infrastructure, Northern Cape

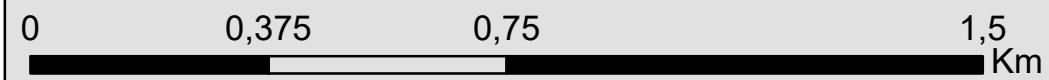
## Preferred Layout Map

### Legend

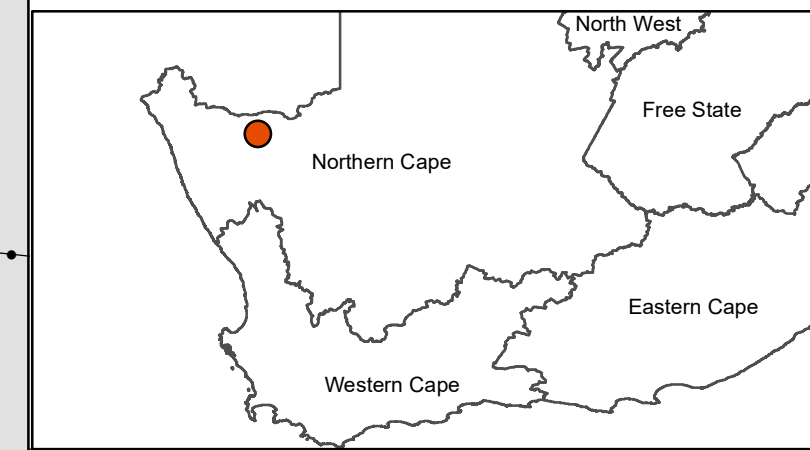
- Existing Power Line
  - Main Road
  - Project Site (250ha)
  - Study Area (12 226ha)
- ### Layout
- Internal Access Roads
  - Solar Field
  - Laydown Area
  - O&M block
  - On-Site Substation Alternative 1



Scale: 1:11 908  
Projection: LO19  
Map Ref: Aggeneys 1 PV - Layout Map - 10.04.19



AGGENEIS / ARIES 1 400kV OHL



# Aggeneys 2 – 100MW Solar Facility and associated infrastructure, Northern Cape

## Environmental Sensitivity and Preferred Layout Map



### Legend

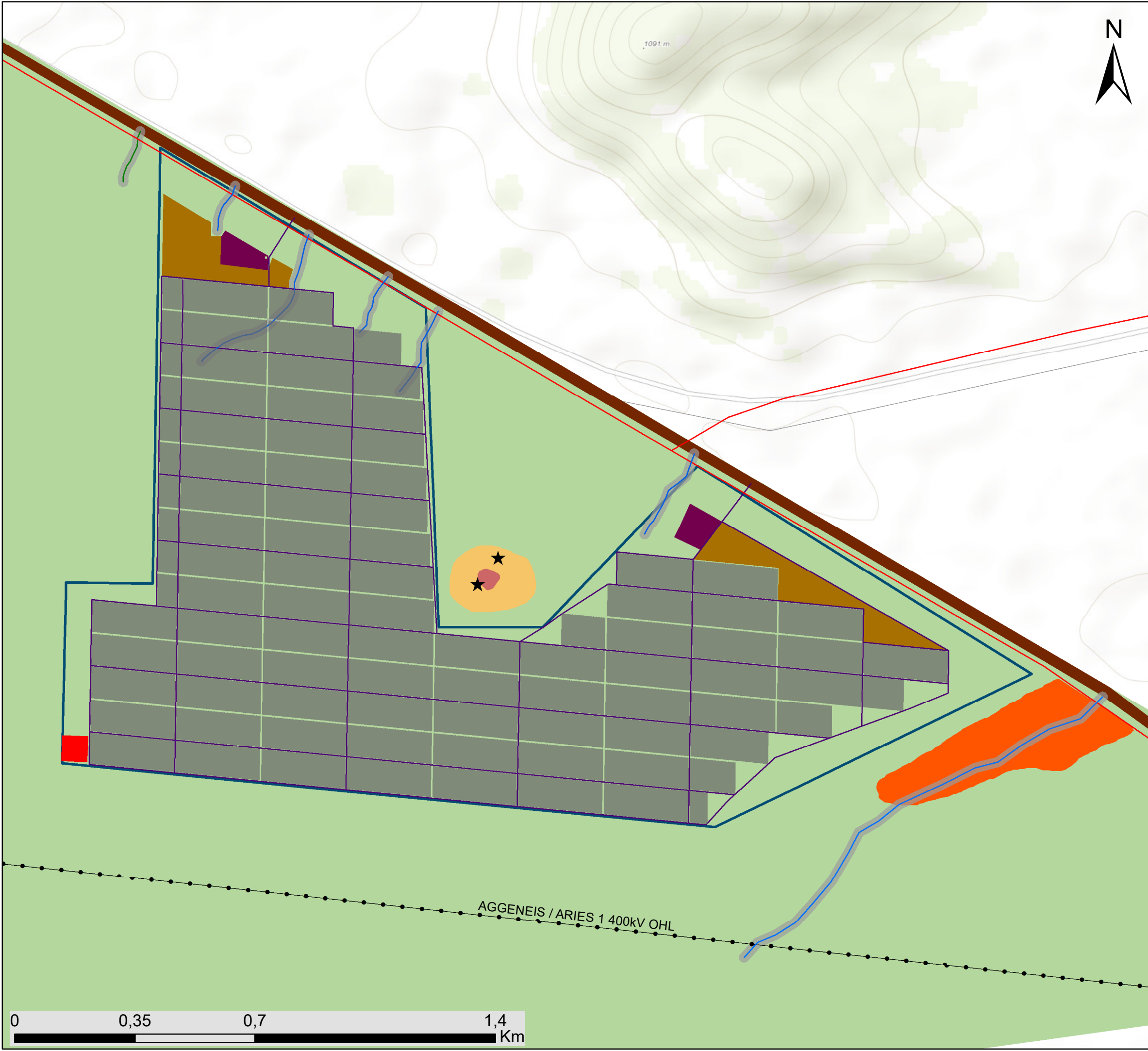
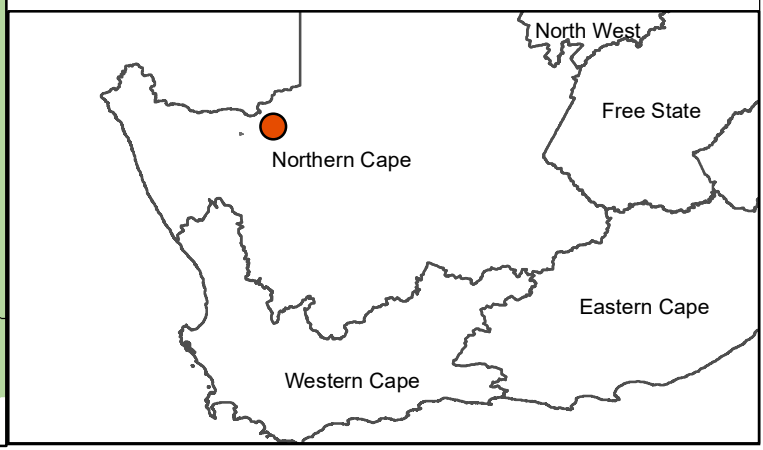
- Existing Power Line
- Main Road
- Internal Access Roads
- Solar Field
- On-Site Substation Alternative 1
- O&M block
- Laydown Area
- Project Site (250a)

### Environmental Sensitivities

- Rock Cairn; likely grave (No-go Heritage Area)
- Ephemeral Watercourses (Medium Freshwater Sensitivity)
- Ephemeral Watercourse Buffer: 15m (Medium Freshwater Sensitivity)
- Rocky Outcrop (High Ecological and Avifauna Sensitivity)
- Rocky Outcrop Buffer (Medium Ecological and Avifauna Sensitivity)
- Wash (Medium Ecological and Avifauna Sensitivity)
- Plains (Low Ecological and Avifauna Sensitivity)
- Road (Transformed Ecological and Avifauna Sensitivity)

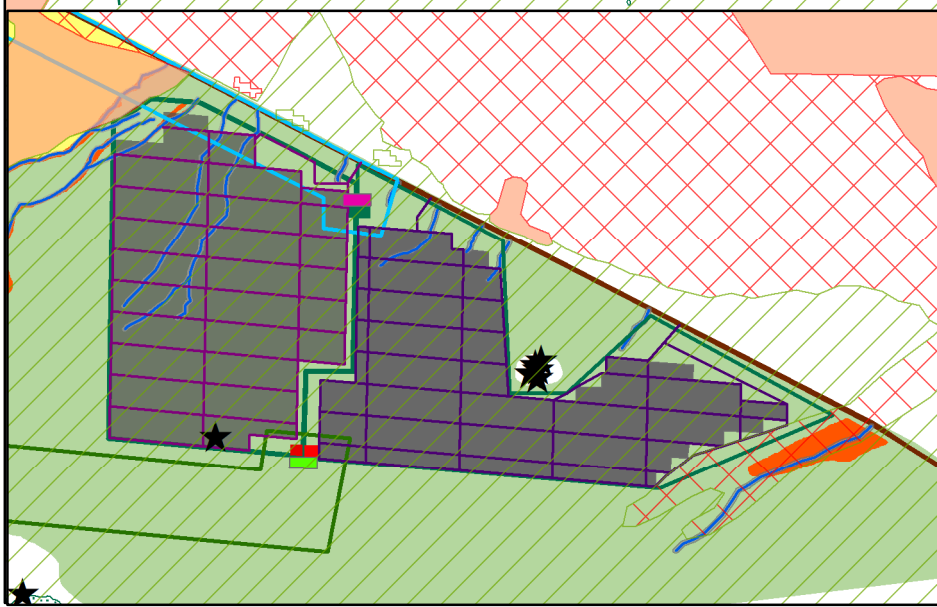
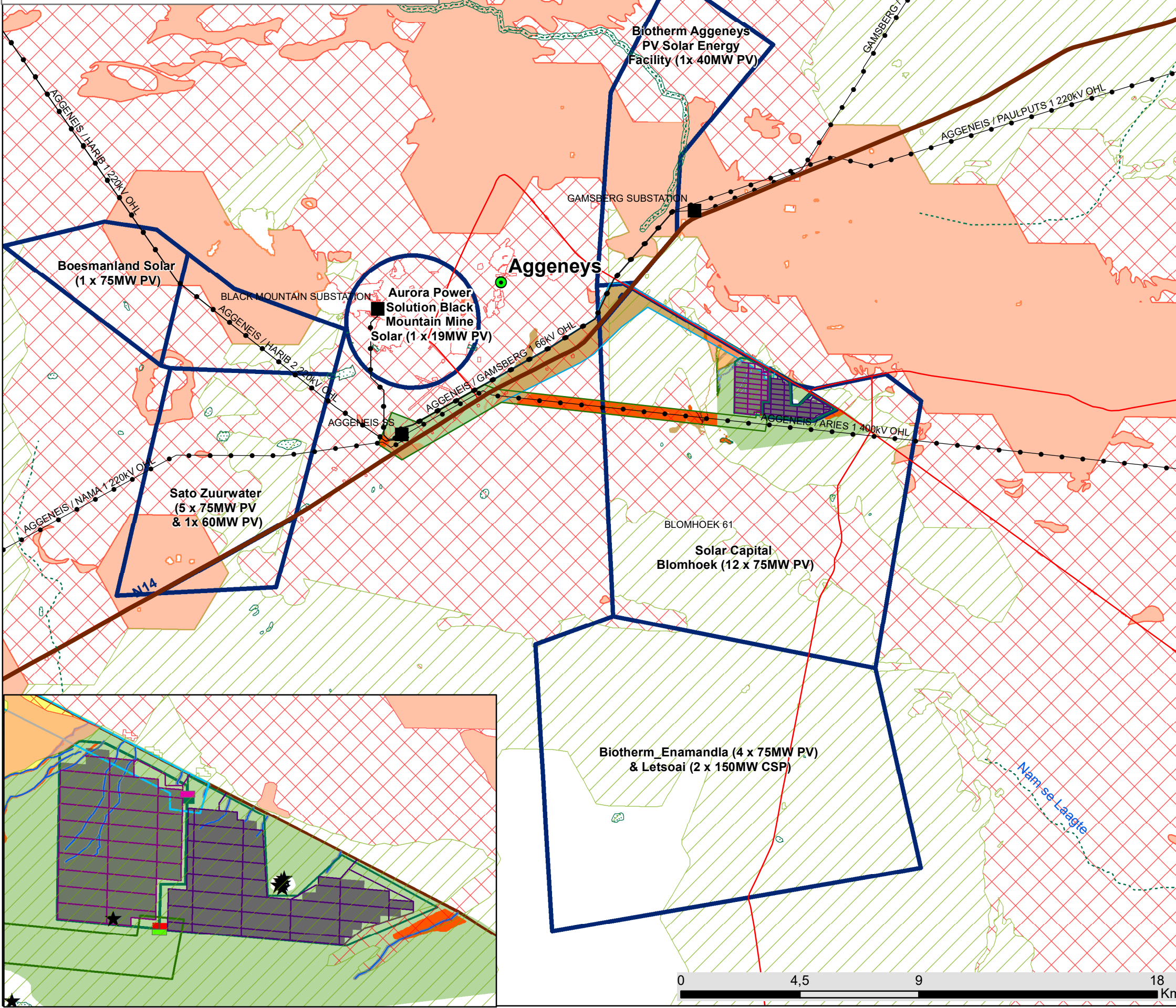


Scale: 1:10 687  
 Projection: LO19  
 Map Ref: Aggeneys 2 PV - Sensitivity Map - 10.04.19



# Aggeneys 2 - 100MW Solar Facility and associated infrastructure, Northern Cape

## Environmental Sensitivity Map



**Legend**

- Town
- Eskom Substation
- Perennial River
- Non-perennial River
- National Route
- Existing Power Line
- Main Road
- Other known renewable energy facilities

**Layout**

- Internal Access Roads
- Collector Station Alternative 1
- Collector Station Alternative 2
- Substation Alternative 1
- Substation Alternative 2
- Power Line Corridor Alternative 1
- Power Line Corridor Alternative 2
- Solar Field
- Project Site (250ha)

**Aggeneys 1 & 2 Environmental Sensitivities**

- Insignificant Background Heritage Scatter (no impact)
- Ephemeral Watercourse (Medium Freshwater Sensitivity)
- Ephemeral Watercourse 15m Buffer (Medium Freshwater Sensitivity)
- Gravel Plains (High Ecological Sensitivity)
- Wash (Medium Ecological and Avifauna Sensitivity)
- Plains (Low Ecological and Avifauna Sensitivity)
- Road (Transformed Ecological and Avifauna Sensitivity)

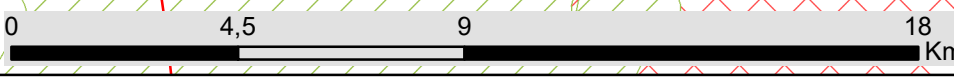
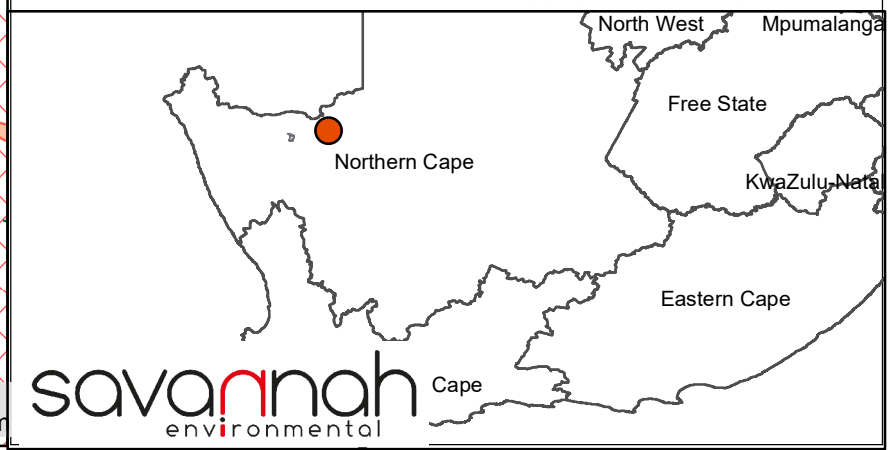
**Grid Infrastructure Environmental Sensitivities**

- Very High Sensitivity
- High Sensitivity
- Medium Sensitivity
- Low Sensitivity

**Formal Sensitivities**

- NFEPA Wetlands
- Critical Biodiversity Area One
- Critical Biodiversity Area Two
- Ecological Support Area

Scale: 1:150 000  
 Projection: LO19  
 Map Ref: Aggeneys 1 PV - Sensitivity Map - 24.05.19



**Appendix M: Site Coordinates**

*Corner point coordinates (Project Site):*

<b>Coordinates</b>		
	<b>Latitude (S)</b>	<b>Longitude (E)</b>
<b>01 (Northern most point (moving in a clockwise direction))</b>	29° 16' 27,188" S	18° 56' 45,613" E
<b>02</b>	29° 16' 42,366" S	18° 57' 14,342" E
<b>03</b>	29° 17' 12,600" S	18° 57' 15,632" E
<b>04</b>	29° 17' 12,597" S	18° 57' 26,833" E
<b>05</b>	29° 16' 57,361" S	18° 57' 43,547" E
<b>06</b>	29° 17' 17,004" S	18° 58' 19,548" E
<b>07</b>	29° 17' 31,512" S	18° 57' 45,387" E
<b>08</b>	29° 17' 25,462" S	18° 56' 34,968" E
<b>09</b>	29° 17' 8,346" S	18° 56' 35,475" E
<b>10</b>	29° 17' 8,449" S	18° 56' 44,752" E
<b>Centre Point</b>	29°17'18.55"S	18°57'19.97" E

*Substation Alternative 1 coordinates (preferred Alternative):*

<b>Coordinates</b>		
	<b>Latitude (S)</b>	<b>Longitude (E)</b>
<b>Centre Point</b>	29° 17' 23,916" S	18° 56' 36,268" E

*Substation Alternative 2 coordinates:*

<b>Coordinates</b>		
	<b>Latitude (S)</b>	<b>Longitude (E)</b>
<b>Centre point</b>	29° 16' 36,517" S	18° 56' 46,693" E