

ATTENTION: INTERESTED AND/OR AFFECTED PARTIES

Dear Sir/Madam

NOTICE OF APPLICATION FOR A PROPOSED MINING RIGHT AND RELATED ENVIRONMENTAL AUTHORISATIONS - ALEXANDER PROJECT**1. Introduction**

Anglo American Inyosi Coal (AAIC) is proposing to apply for a mining right on portions of the following farms: Elandsfontein 75 IS, Halgewonnen 190 IS, Legdaar 78 IS, Middelkraal 50 IS, Schurvekop 227 IS, Vlakkuielen 76 IS, Geluk 226 IS, Aangewys 81 IS, Alexander 102 IS, Boschmanskraal 113 IS, Brakfontein 117 IS, Rietfontein 101 IS, Witbank 80 IS, Witbank 576 IS, Dorstfontein 71 IS, Kafferstad 79 IS, Rensburgshoop 74 IS, Witrand 103 IS, Caley 77 IS, Bakenlaagte 84 IS, Driefontein 69 IS, Frischgewaagd 60 IS, Kriel 73 IS, Kriel Power Station 65 IS, Kriel Town, Matla Power Station 141 IS, Nooitgedacht 59 IS, Onverwacht 70 IS, Rietfontein 100 IS, Roodebloem 58 IS, Roodepoort 40 IS, Vaalpan 68 IS, Vierfontein 61 IS, Vlaklaagte 83 IS and Wilgervlei 555 IS.

The proposed mining right area known as the Alexander Project ('the project') is located directly to the south and south-east of the town of Kriel in the Mpumalanga Province. The Alexander resource lies between the R547 provincial road to the west and the R35 provincial road to the east, with the R545 provincial road bisecting the resource in a north-west to south-east direction (See Figure 1). The target mineral is coal.

The proposed project will comprise underground mining with the following surface infrastructure: a single main shaft complex, a waste rock dump, topsoil stockpiles and mine related support services and facilities. Associated main shaft complex infrastructure and support services and facilities will include: an incline shaft; vertical shaft and ventilation fans; administrative block (e.g. mine offices, kitchen, canteen, training centre, mustering centre and clinic/ emergency room); change house; car park/bus stop and shelter; fuel and oil storage facilities and refuelling bays; security gate and office; workshop and wash-bay; stores; control room; water transport and holding facilities; storm water management; water treatment plant; mini sub-station and power lines; lamp rooms; laydown areas; a sewage treatment plant; waste yard; new intersection and main access road; and internal/maintenance access roads.

Further to this, the proposed project will require construction of an overland conveyor to transport run-of mine coal from the proposed Alexander incline shaft to the stockpile area at the existing Elders Colliery for beneficiation purposes. In addition to the farm portions covered by the proposed Alexander mining right area, the proposed conveyor will also traverse portions of the following farms: Elandsfontein 75 IS, Legdaar 78 IS, Rensburgshoop 74 IS and Schoon-Vlei 52 IS.

2. Notification of environmental applications

Notice is hereby given of the intent to submit applications for environmental authorisation. The relevant legislation and associated listed activities include but are not limited to the following:

Legislation	Listed Activities	Competent Authority
Minerals and Petroleum Resources Development Act (No. 28 of 2002)	Mining Right Application	Department of Mineral Resources (Mpumalanga)
National Environmental Management Act (No. 107 of 1998).	GNR 983 Activities (2, 9, 10, 11, 12, 13, 14, 19, 24, 25, 27, 28, 30, 56,); GNR 984 Activities (3, 4, 6, 7, 11, 15, 16, 17, 27); GNR 985 Activities (1, 2, 4, 10, 12, 14, 15, 18,).	Department of Mineral Resources (Mpumalanga)
National Environmental Management: Waste Act (No. 59 of 2008)	Category A, Activity 3(2), 3(9), 3(12); Category B, Activity 4(1), 4(2), 4(7), 4(10), 4(11).	Department of Mineral Resources (Mpumalanga)

Synergistics Environmental Services (Synergistics), an SLR Group Company, has been appointed as the independent environmental assessment practitioner responsible for undertaking the necessary environmental processes and conducting the public participation process for the project. The environmental assessment will include both a scoping and environmental impact assessment phase in terms of the Environmental Impact Assessment Regulations (Government Notice 982 to 986, 4 December 2014).

The project is currently at the beginning of the scoping phase, the purpose of which is to identify potential environmental impacts (physical, biological, social and economic) associated with the proposed project.

3. Opportunities for public consultation and participation

A public participation process will be conducted as an integral part of the process. As a potential interested and/or affected party, you are invited to participate.

Four public scoping meetings and various focus group meetings have been arranged as part of the scoping phase public participation process. The purpose of the meetings will be to present information on the project and the potential environmental impacts; and to obtain input from interested and affected parties on any related issues, concerns and questions. The same information will be presented at all meetings.

The details of the four public meetings are provided in the table below:

Date	Venue	Time
Wednesday 10 February 2016	EG Church, Kriel (English and Afrikaans)	10h00
Wednesday 10 February 2016	Kriel High School (English and Zulu)	14h00
Thursday 11 February 2016	Kuiersaam Guesthouse, Secunda (English and Afrikaans)	10h00
Thursday 11 February 2016	Enkundleni Primary School (English and Zulu)	14h00

In addition to the meetings you will be provided with the opportunity to comment on the scoping and EIA reports once these are made available for public review.

To ensure that you are identified as an interested and/or affected party (IAP), please submit your name, contact information and interest in the project in writing to the contact person(s) given below. Comments can be submitted at various stages of the project as follows: in writing to the undersigned, at the public meetings and after review of the various reports.

For more information please contact the undersigned.

Ntsako Baloyi (main contact) or Marline Medallie (alternative contact)

nbaloyi@slrconsulting.com / mmedallie@slrconsulting.com

Tel: 011 467 0945

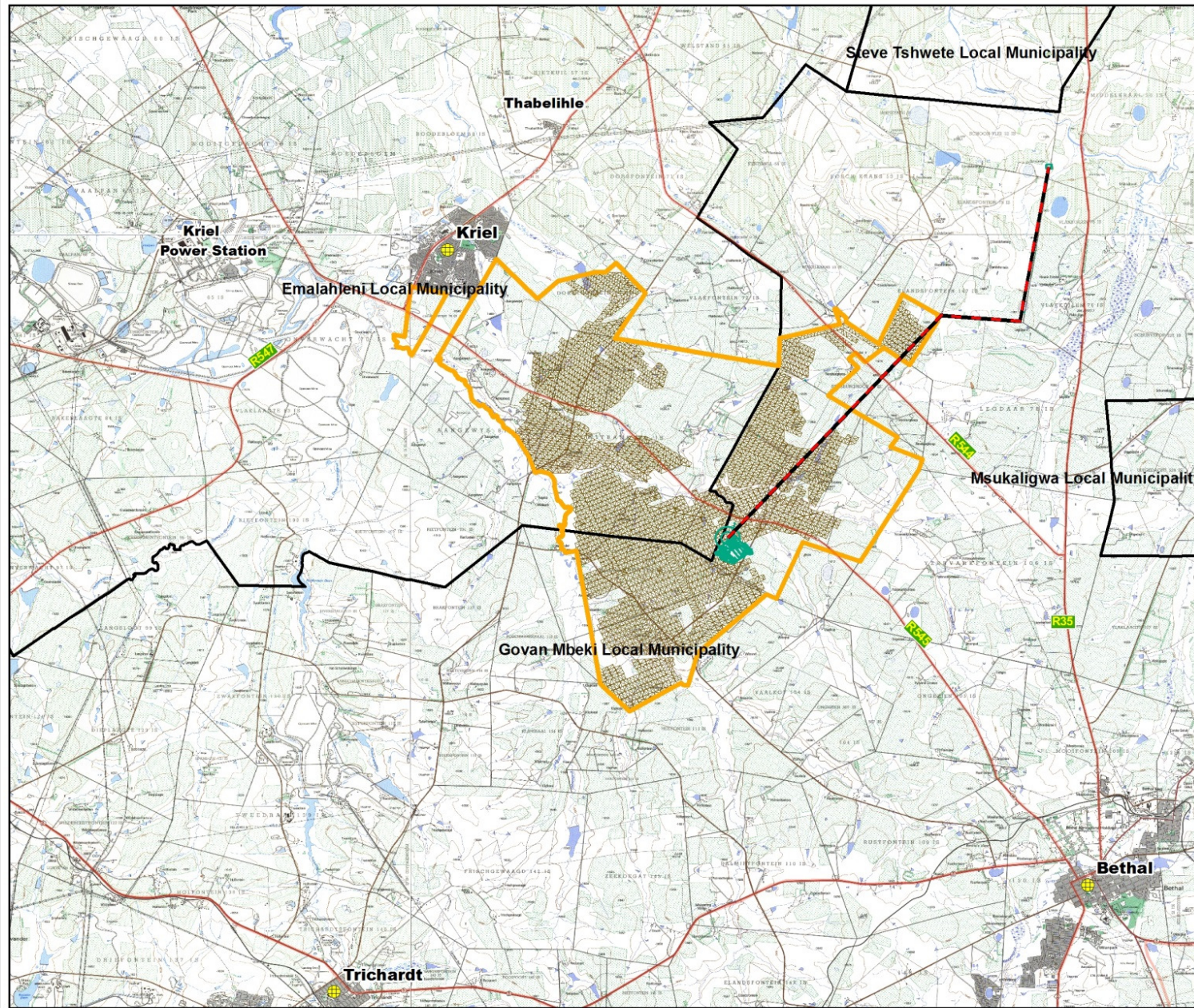
Fax: 011 467 0975

PO Box 1596, Cramerview, 2060

Yours faithfully

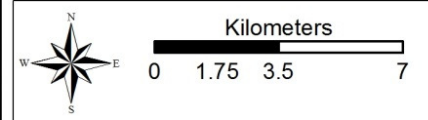
A handwritten signature in black ink, appearing to read 'Ntsako Baloyi', with a large, stylized flourish at the end.

Ntsako Baloyi



Legend

- Place Names
- Main Roads
- Proposed Conveyor Route
- Shaft Complex
- Alexander Mine Plan
- Proposed Alexander Mining Right Area
- Local Municipalities



SLR Synergistics is an SLR group company

Regional Locality Map

750.01080.P0002

Coordinate System
DMS
Spheroid
Hartebeesthoek '94
Central Meridian
LO29