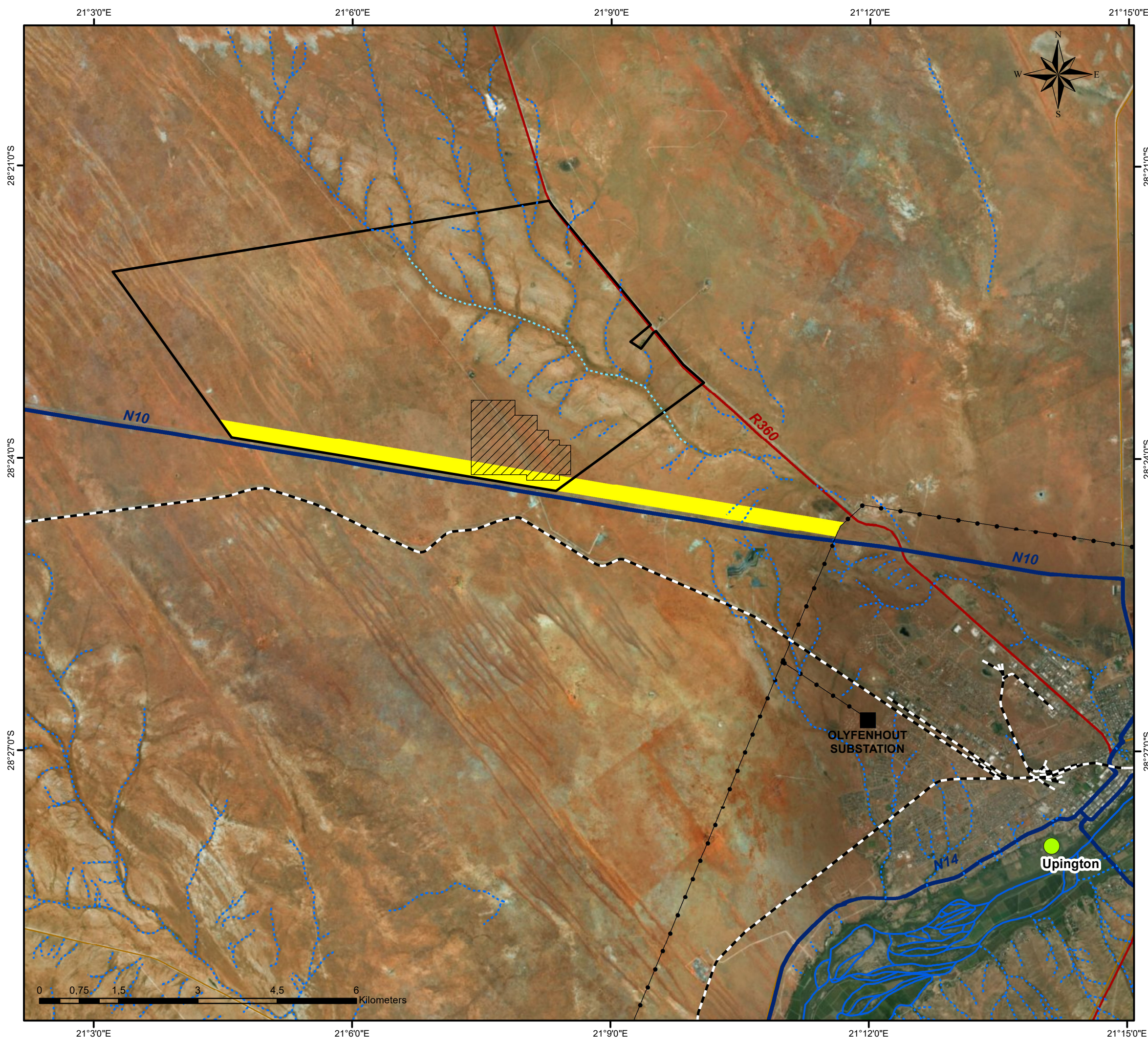


# Allepad PV One Locality Map

## Legend

- Towns
- Eskom Substation
- Railway Line
- Dry Watercourse
- Non-Perennial Watercourse
- Perennial Watercourse
- Existing Power line
- National Road
- Regional Road
- Main Road
- 300m Power Line Corridor
- Allepad PV One Project Site
- Erf 5315 Upington

Scale: 1:70 000  
 Projection: LO21\_WGS 1984  
 Map Ref.: Allepad PV1 EIA\_Locality Map



# Allepad PV One

## Layout Map

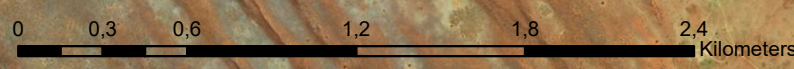
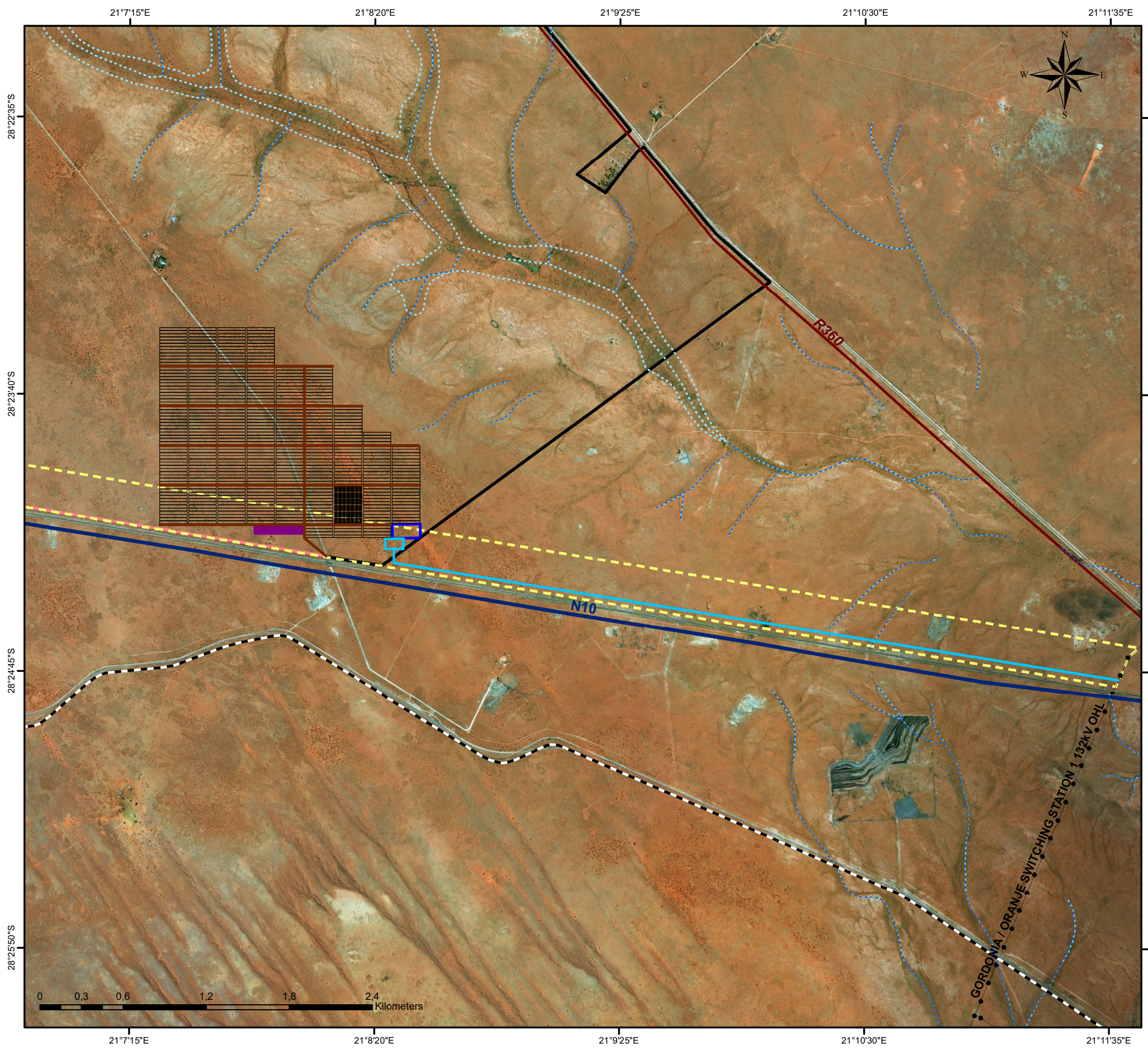
### Legend

- Railway Line
- Existing Power line
- National Road
- Regional Road
- Perennial Watercourse
- - - Non-Perennial Watercourse
- ▭ Erf 5315 Upington
- ▭ Cadastral Boundary

### Layout:

- Shared Access Road (4.5km (l) / 6m (w))
- Internal Access Roads (9.6km (l) / 6m (w))
- Power line (5.4km)
- ▭ Substation (1ha)
- - - 300m Power Line Corridor
- ▭ Energy Storage Area (2ha)
- ▭ Construction Camp & Lay Down Area (2ha)
- ▭ Solar Field (215ha)

Scale: 1:26 840  
Projection: LO21\_WGS 1984  
Map Ref.: Allepad PV\_A3 Layout Map



21°40'E 21°55'E 21°6'10"E 21°7'15"E 21°8'20"E 21°9'25"E



# Allepad PV One

## Environmental Sensitivity Map

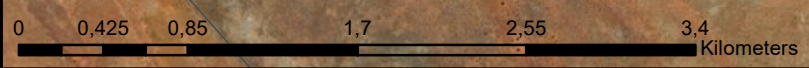
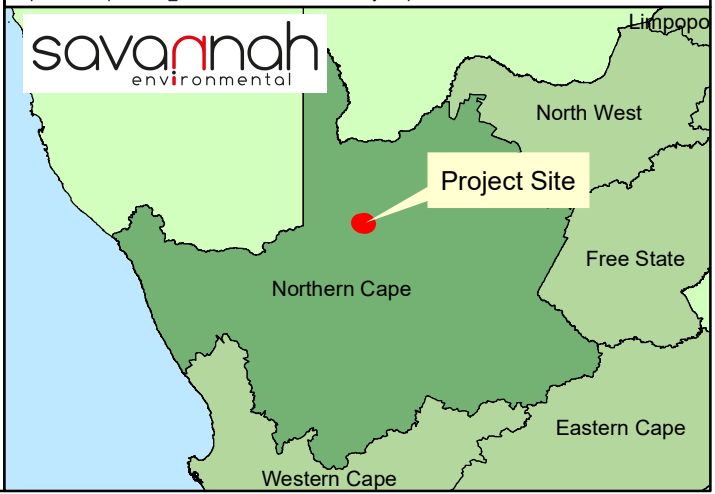
### Legend

- Railway Line
- Dry Watercourse
- Non-Perennial Watercourse
- National Road
- Regional Road
- Erf 5315 Upington
- Cadastral Boundary

### Environmental Sensitivities:

- Possible Burial Site (Site 0506)
- No-Go Area (Site 0506 30m Buffer - Heritage)
- Concentration of Artefacts (Site 0526)
- No-Go Area (Site 0526 100m Buffer - Heritage)
- High (Avifauna)
- Very High (Ecology & Avifauna)
- High (Ecology & Avifauna)
- Medium (Ecology & Avifauna)
- Low (Ecology & Avifauna)

Scale: 1:38 000  
 Projection: LO21\_WGS 1984  
 Map Ref.: Allepad PV1\_A3 Environmental Sensitivity Map

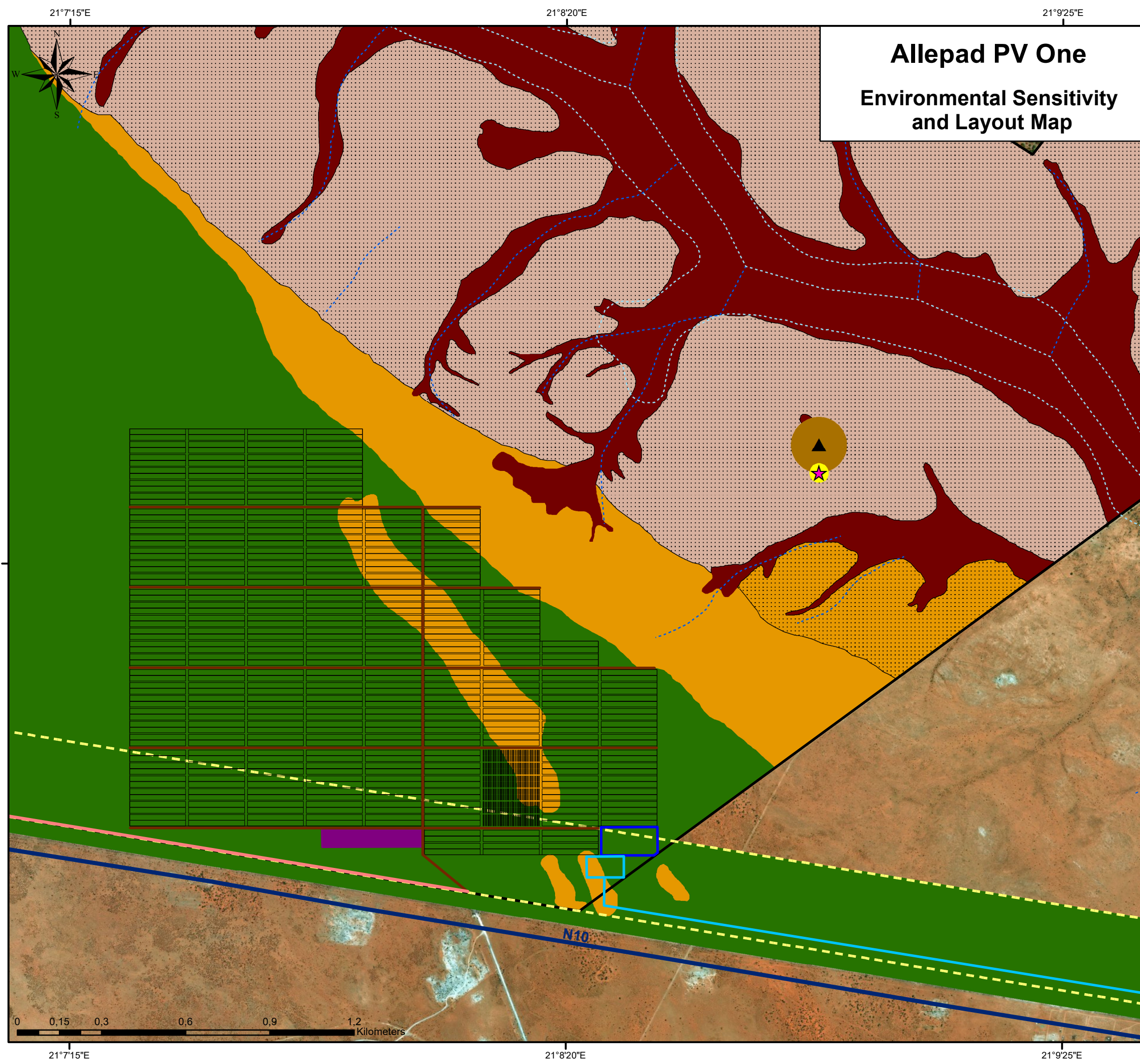


21°40'E 21°55'E 21°6'10"E 21°7'15"E 21°8'20"E 21°9'25"E

28°20'25"S  
28°21'30"S  
28°22'35"S  
28°23'40"S  
28°24'45"S

28°20'25"S  
28°21'30"S  
28°22'35"S  
28°23'40"S  
28°24'45"S

# Allepad PV One Environmental Sensitivity and Layout Map



- ### Legend
- - - Dry Watercourse
  - - - Non-Perennial Watercourse
  - National Road
  - Erf 5315 Upington
  - Cadastral Boundary
- ### Layout:
- Shared Access Road (4.5km (l) / 6m (w))
  - Internal Access Roads (9.6km (l) / 6m (w))
  - Power line (5.4km)
  - Substation (1ha)
  - 300m Power Line Corridor
  - Energy Storage Area (2ha)
  - Construction Camp & Lay Down Area (2ha)
  - Solar Field (215ha)
- ### Environmental Sensitivities:
- ★ Possible Burial Site (Site 0506)
  - No-Go Area (Site 0506 30m Buffer - Heritage)
  - ▲ Concentration of Artefacts (Site 0526)
  - No-Go Area (Site 0526 100m Buffer - Heritage)
  - High (Avifauna)
  - Very High (Ecology & Avifauna)
  - High (Ecology & Avifauna)
  - Medium (Ecology & Avifauna)
  - Low (Ecology & Avifauna)

Scale: 1:13 440  
 Projection: LO21\_WGS 1984  
 Map Ref.: Allepad PV1\_A3 Layout & Sensitivity Map

**savannah**  
environmental

Project Site

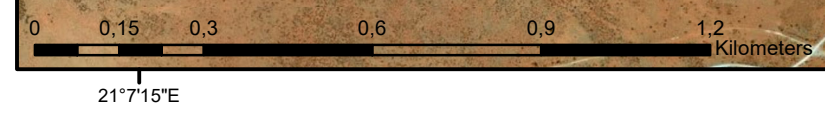
Northern Cape

North West

Free State

Eastern Cape

Western Cape



# Allepad PV One Environmental Sensitivity and Layout Map

## Legend

- Dry Watercourse
  - Non-Perennial Watercourse
  - National Road
  - Regional Road
  - Erf 5315 Upington
  - Cadastral Boundary
- Layout:**
- Shared Access Road (4.5km (l) / 6m (w))
  - Internal Access Roads (9.6km (l) / 6m (w))
  - Power line (5.4km)
  - Substation (1ha)
  - 300m Power Line Corridor
  - Energy Storage Area (2ha)
  - Construction Camp & Lay Down Area (2ha)
  - Solar Field (215ha)

## Environmental Sensitivities:

- Possible Burial Site (Site 0506)
- No-Go Area (Site 0506 30m Buffer - Heritage)
- Concentration of Artefacts (Site 0526)
- No-Go Area (Site 0526 100m Buffer - Heritage)
- High (Avifauna)
- Very High (Ecology & Avifauna)
- High (Ecology & Avifauna)
- Medium (Ecology & Avifauna)
- Low (Ecology & Avifauna)

Scale: 1:20 000  
Projection: LO21\_WGS 1984  
Map Ref.: Allepad PV1\_A3 Layout & Sensitivity Map (power line)

