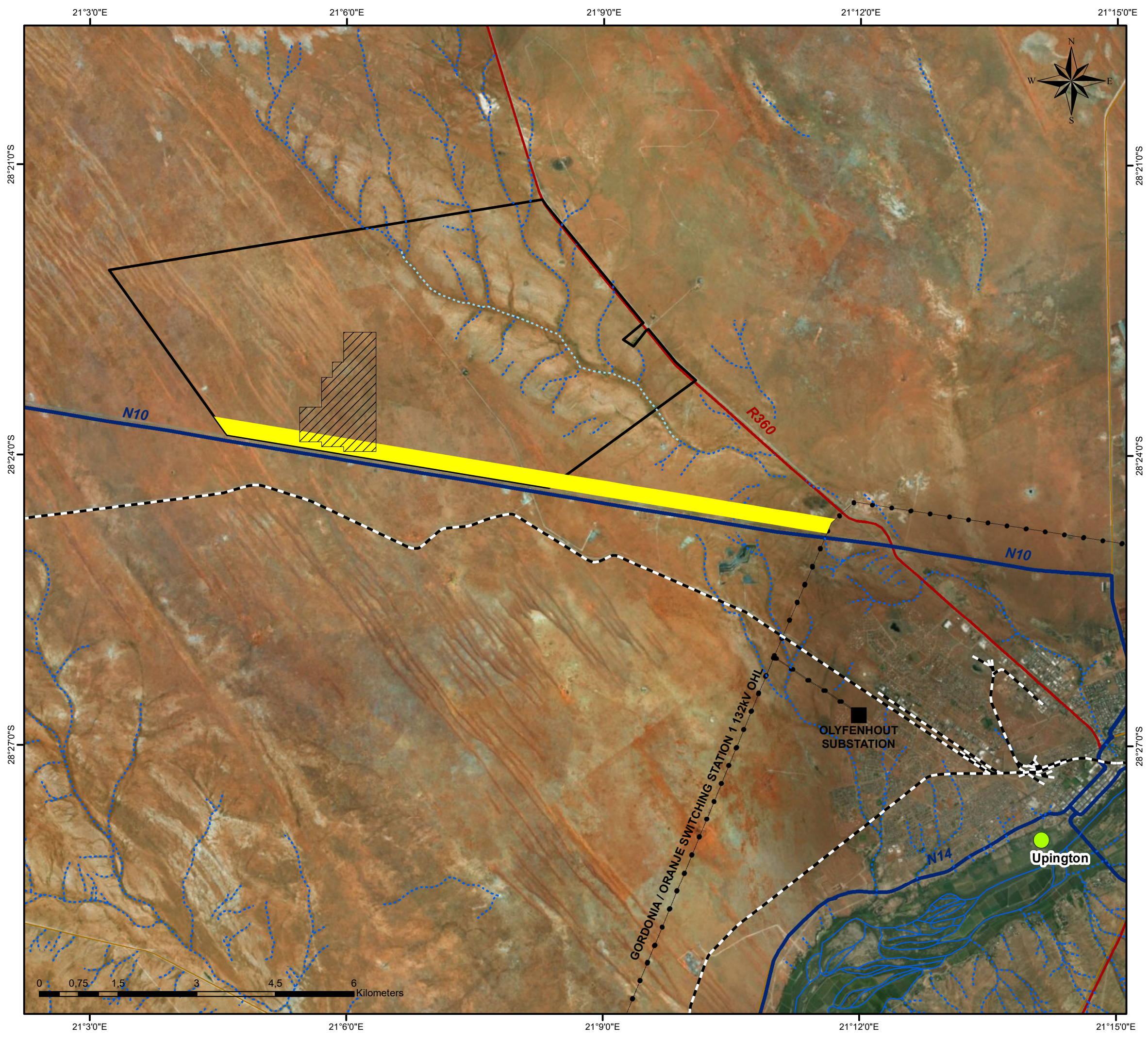
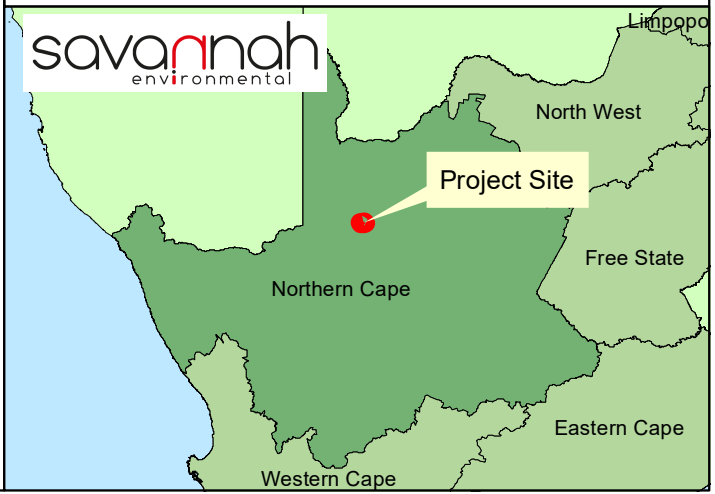


Allepad PV Three Locality Map

Legend

- Towns
- Eskom Substation
- Existing Power line
- Railway Line
- Dry Watercourse
- Non-Perennial Watercourse
- Perennial Watercourse
- Existing Power line
- National Road
- Regional Road
- Main Road
- 300m Power Line Corridor
- Allepad PV Three Project Site
- Erf 5315 Upington

Scale: 1:70 000
 Projection: LO21_WGS 1984
 Map Ref.: Allepad PV_A3 Locality Map



Allepad PV Three

Layout Map

Legend

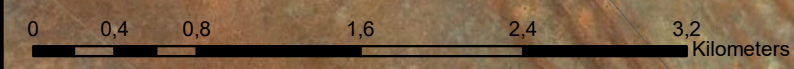
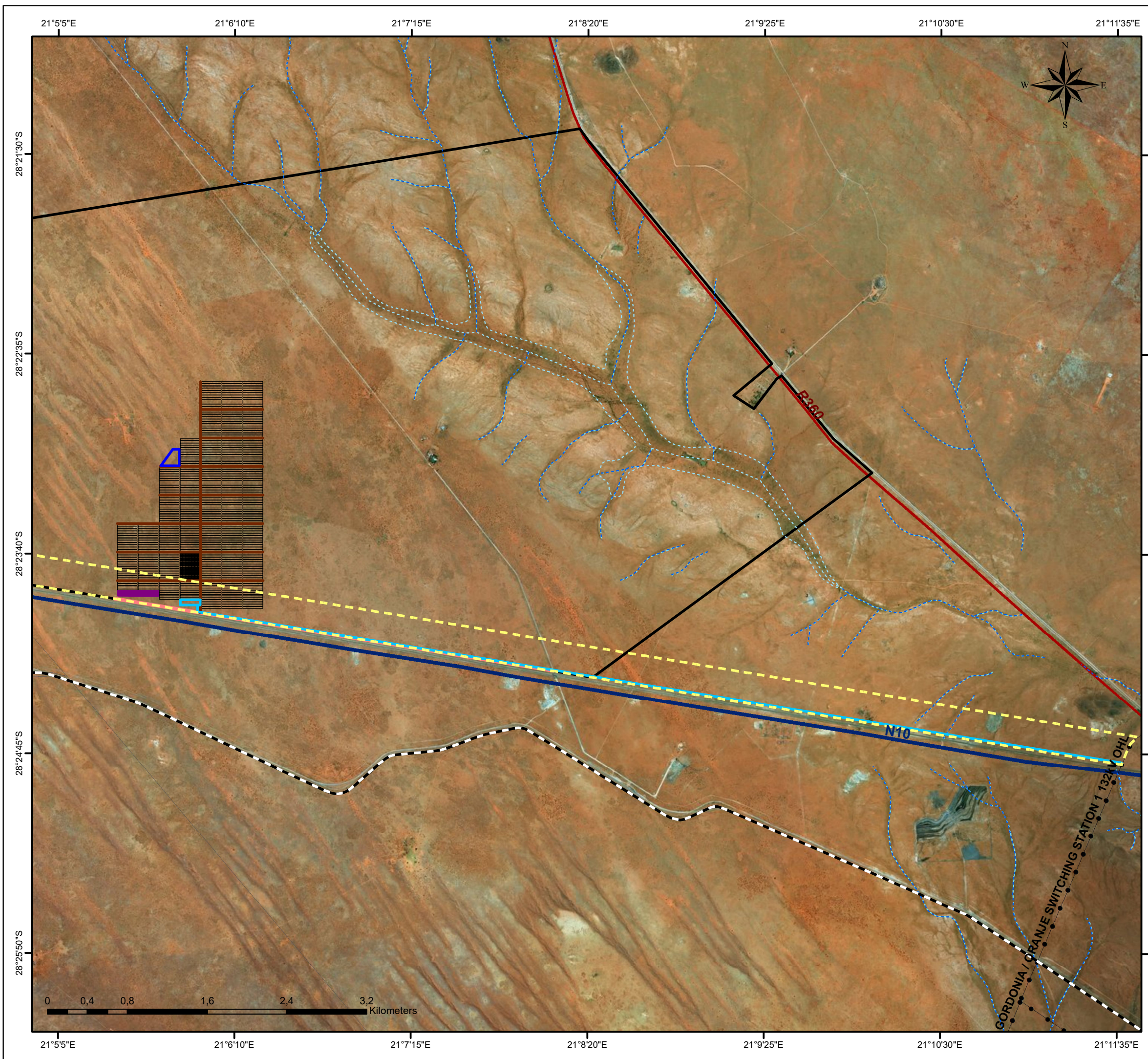
- Railway Line
- Existing Power line
- National Road
- Regional Road
- Perennial Watercourse
- Non-Perennial Watercourse

- Erf 5315 Uppington
- Cadastral Boundary

Layout:

- Shared Access (4.5km (l) / 6m (w))
- Internal Access Roads (10km (l) / 6m (w))
- Power Line (9.5km)
- Substation (1ha)
- 300m Power Line Corridor
- Construction Camp & Lay Down Area (2ha)
- Energy Storage Area (2ha)
- Solar Field (230ha)

Scale: 1:37 005
Projection: LO21_WGS 1984
Map Ref.: Allepad PV3_A3 Layout Map



21°40'E 21°55'E 21°6'10"E 21°7'15"E 21°8'20"E 21°9'25"E

28°20'25"S 28°21'30"S 28°22'35"S 28°23'40"S 28°24'45"S



Allepad PV Three

Environmental Sensitivity Map

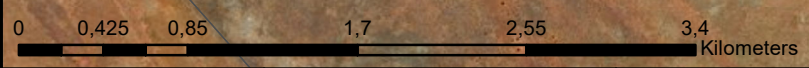
Legend

- Railway Line
- Dry Watercourse
- Non-Perennial Watercourse
- National Road
- Regional Road
- Erf 5315 Upington
- Cadastral Boundary

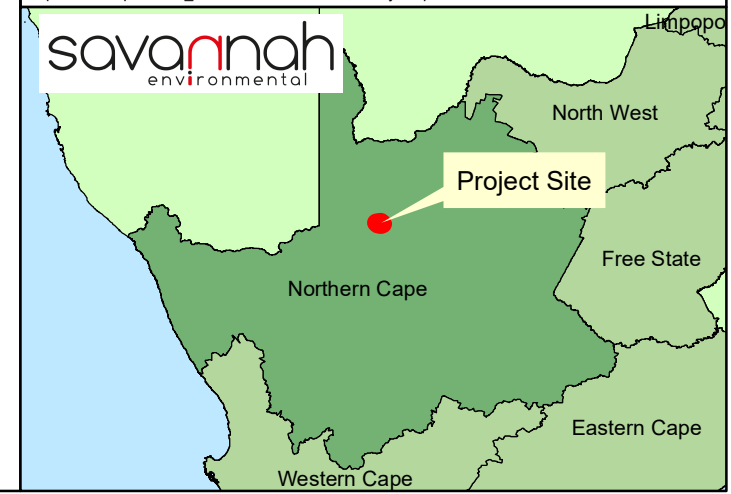
Environmental Sensitivities:

- Possible Burial Site (Site 0506)
- No-Go Area (Site 0506 30m Buffer - Heritage)
- Concentration of Artefacts (Site 0526)
- No-Go Area (Site 0526 100m Buffer - Heritage)
- High (Avifauna)
- Very High (Ecology & Avifauna)
- High (Ecology & Avifauna)
- Medium (Ecology & Avifauna)
- Low (Ecology & Avifauna)

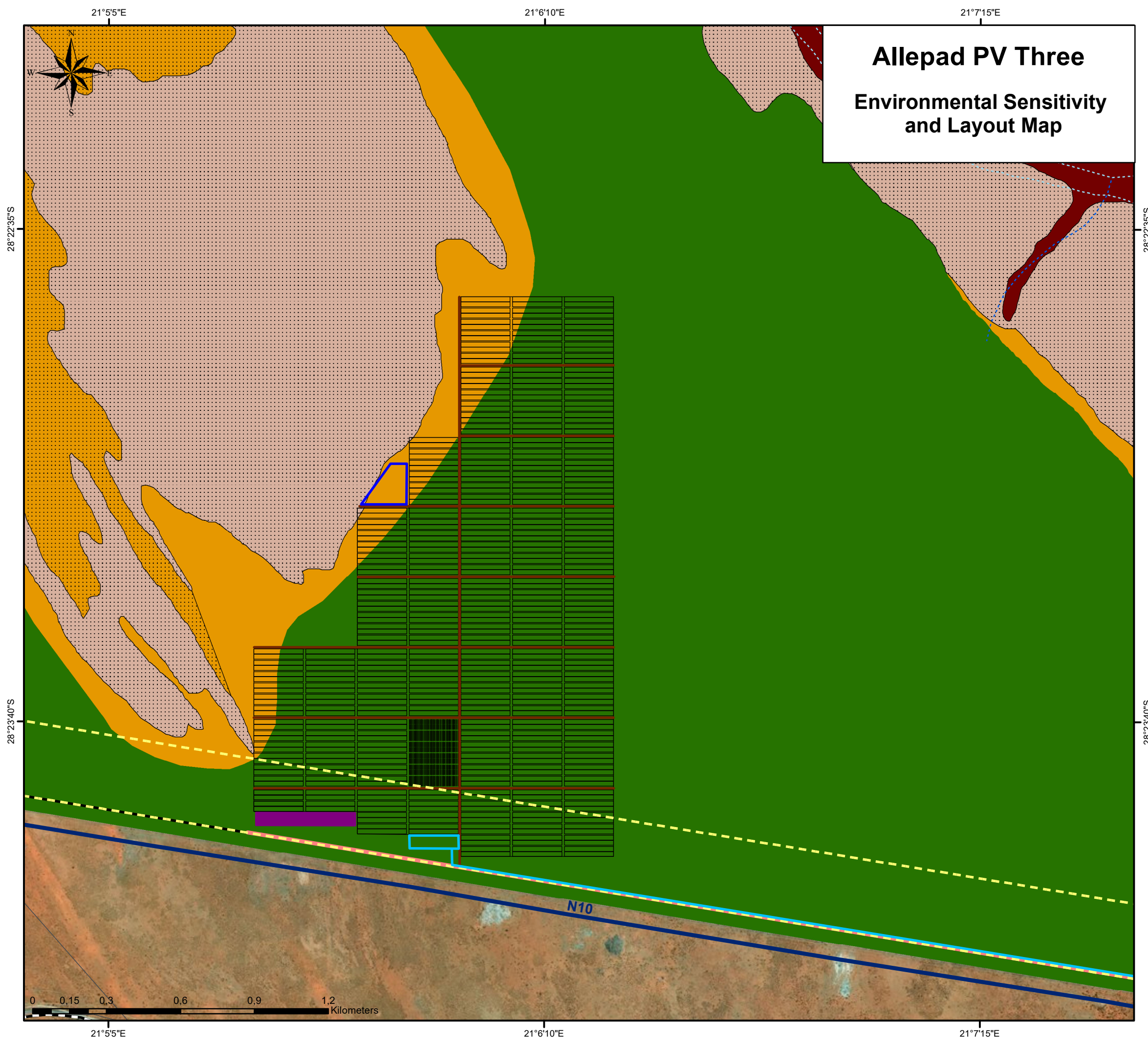
Scale: 1:38 000
 Projection: LO21_WGS 1984
 Map Ref.: Allepad PV3_A3 Environmental Sensitivity Map



21°40'E 21°55'E 21°6'10"E 21°7'15"E 21°8'20"E 21°9'25"E



Allepad PV Three Environmental Sensitivity and Layout Map



Legend

- Dry Watercourse
- Non-Perennial Watercourse
- National Road
- Erf 5315 Upington
- Cadastral Boundary

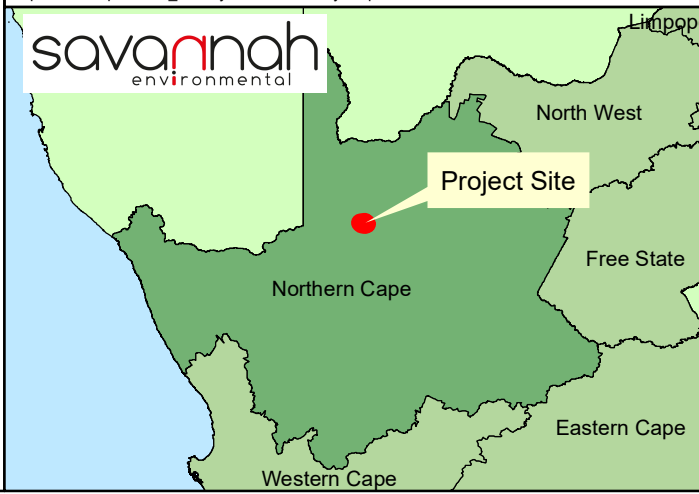
Layout:

- Shared Access (4.5km (l) / 6m (w))
- Internal Access Roads (10km (l) / 6m (w))
- Power Line (9.5km)
- Substation (1ha)
- 300m Power Line Corridor
- Energy Storage Area (2ha)
- Construction Camp & Lay Down Area (2ha)
- Solar Field (230ha)

Environmental Sensitivities:

- High (Avifauna)
- Very High (Ecology & Avifauna)
- High (Ecology & Avifauna)
- Medium (Ecology & Avifauna)
- Low (Ecology & Avifauna)

Scale: 1:15 000
Projection: LO21_WGS 1984
Map Ref.: Allepad PV3_A3 Layout & Sensitivity Map



Allepad PV Three Environmental Sensitivity and Layout Map

Legend

- Railway Line
- Dry Watercourse
- Non-Perennial Watercourse
- National Road
- Regional Road
- Erf 5315 Upington
- Cadastral Boundary

Layout:

- Shared Access (4.5km (l) / 6m (w))
- Internal Access Roads (10km (l) / 6m (w))
- Power Line (9.5km)
- Substation (1ha)
- 300m Power Line Corridor
- Energy Storage Area (2ha)
- Construction Camp & Lay Down Area (2ha)
- Solar Field (230ha)

Environmental Sensitivities:

- Possible Burial Site (Site 0506)
- No-Go Area (Site 0506 30m Buffer - Heritage)
- Concentration of Artefacts (Site 0526)
- No-Go Area (Site 0526 100m Buffer - Heritage)
- High (Avifauna)
- Very High (Ecology & Avifauna)
- High (Ecology & Avifauna)
- Medium (Ecology & Avifauna)
- Low (Ecology & Avifauna)

Scale: 1:32 886
Projection: LO21_WGS 1984
Map Ref.: Allepad PV3_A3 Layout & Sensitivity Map (power line)

