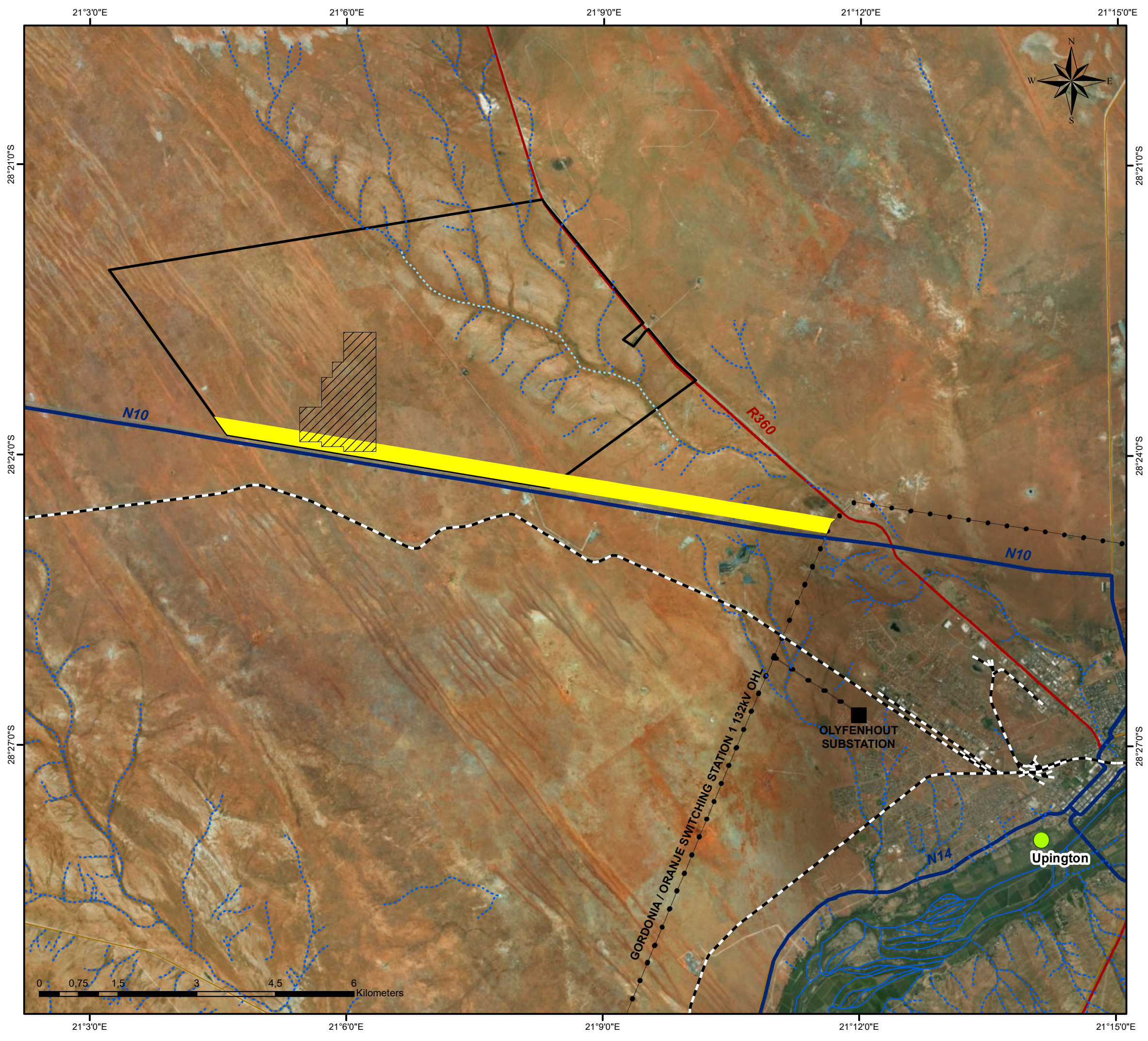
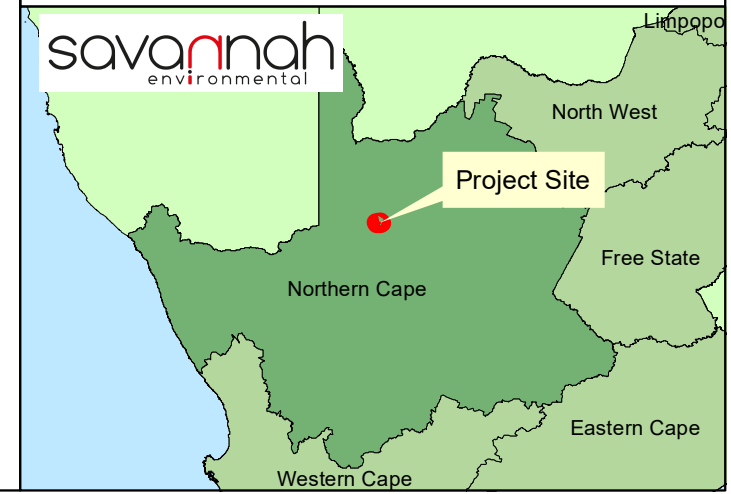


Allepad PV Three Locality Map

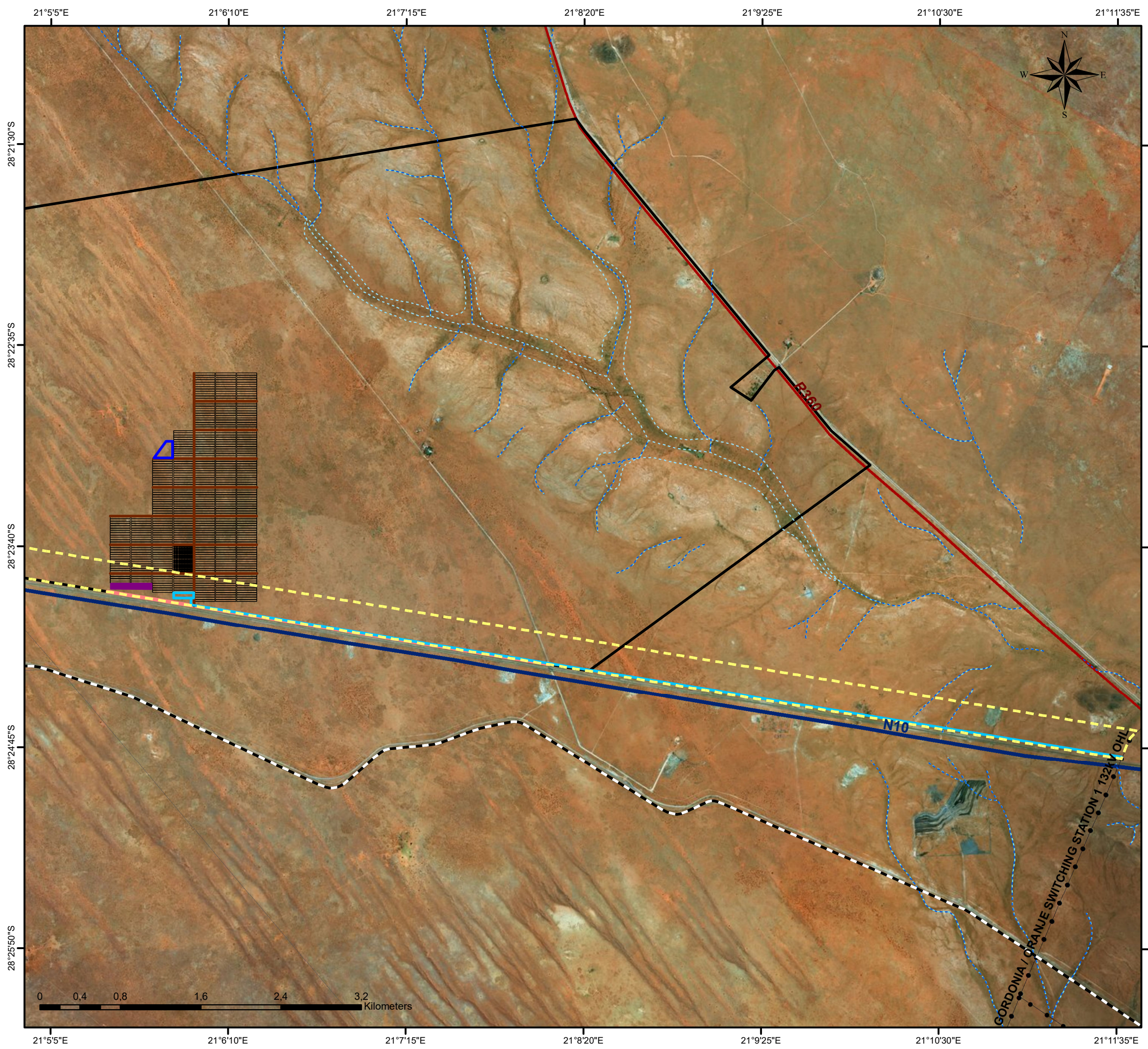
Legend

- Towns
- Eskom Substation
- Existing Power line
- Railway Line
- Dry Watercourse
- Non-Perennial Watercourse
- Perennial Watercourse
- Existing Power line
- National Road
- Regional Road
- Main Road
- 300m Power Line Corridor
- Allepad PV Three Project Site
- Erf 5315 Upington

Scale: 1:70 000
 Projection: LO21_WGS 1984
 Map Ref.: Allepad PV_A3 Locality Map



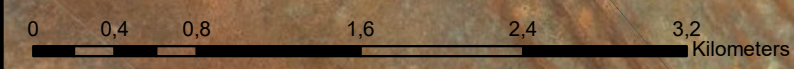
Allepad PV Three Layout Map



Legend

- Railway Line
 - Existing Power line
 - National Road
 - Regional Road
 - Perennial Watercourse
 - Non-Perennial Watercourse
 - Erf 5315 Uppington
 - Cadastral Boundary
- ### Layout:
- Shared Access (4.5km (l) / 6m (w))
 - Internal Access Roads (10km (l) / 6m (w))
 - Power Line (9.5km)
 - Substation (1ha)
 - 300m Power Line Corridor
 - Construction Camp & Lay Down Area (2ha)
 - Energy Storage Area (2ha)
 - Solar Field (230ha)

Scale: 1:37 005
 Projection: LO21_WGS 1984
 Map Ref.: Allepad PV3_A3 Layout Map



21°40'E 21°55'E 21°6'10"E 21°7'15"E 21°8'20"E 21°9'25"E

28°20'25"S 28°21'30"S 28°22'35"S 28°23'40"S 28°24'45"S



Allepad PV Three

Environmental Sensitivity Map

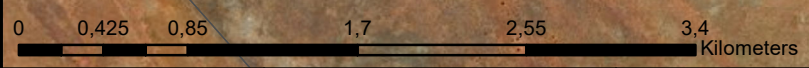
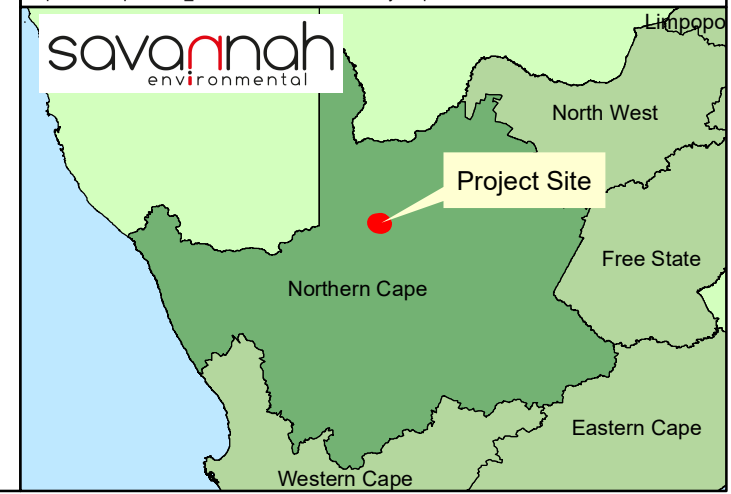
Legend

- Railway Line
- Dry Watercourse
- Non-Perennial Watercourse
- National Road
- Regional Road
- Erf 5315 Upington
- Cadastral Boundary

Environmental Sensitivities:

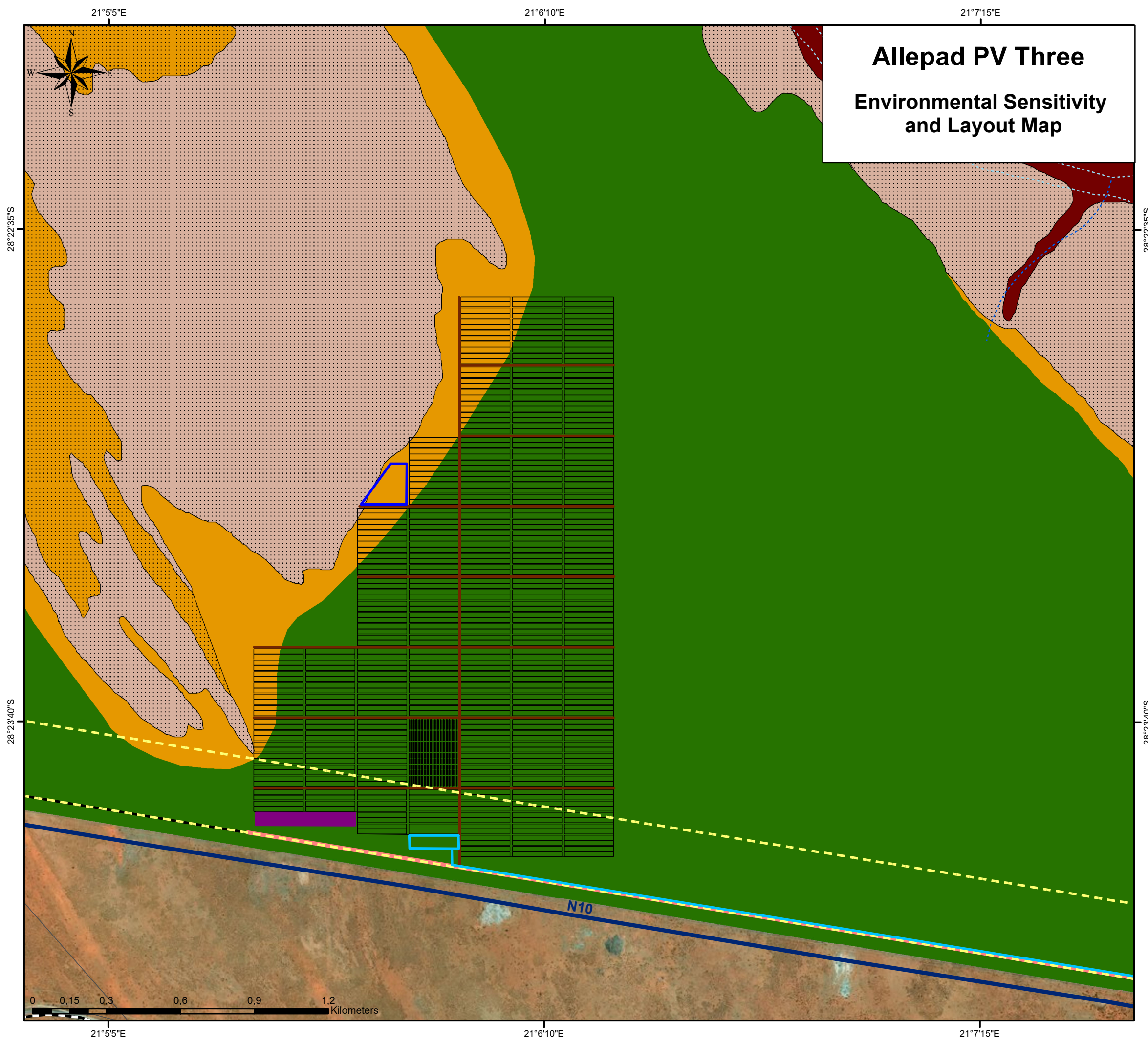
- Possible Burial Site (Site 0506)
- No-Go Area (Site 0506 30m Buffer - Heritage)
- Concentration of Artefacts (Site 0526)
- No-Go Area (Site 0526 100m Buffer - Heritage)
- High (Avifauna)
- Very High (Ecology & Avifauna)
- High (Ecology & Avifauna)
- Medium (Ecology & Avifauna)
- Low (Ecology & Avifauna)

Scale: 1:38 000
 Projection: LO21_WGS 1984
 Map Ref.: Allepad PV3_A3 Environmental Sensitivity Map



21°40'E 21°55'E 21°6'10"E 21°7'15"E 21°8'20"E 21°9'25"E

Allepad PV Three Environmental Sensitivity and Layout Map



Legend

- - - Dry Watercourse
- - - Non-Perennial Watercourse
- National Road
- Erf 5315 Upington
- Cadastral Boundary

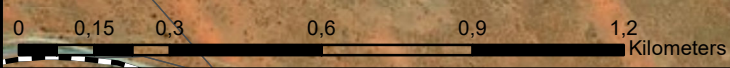
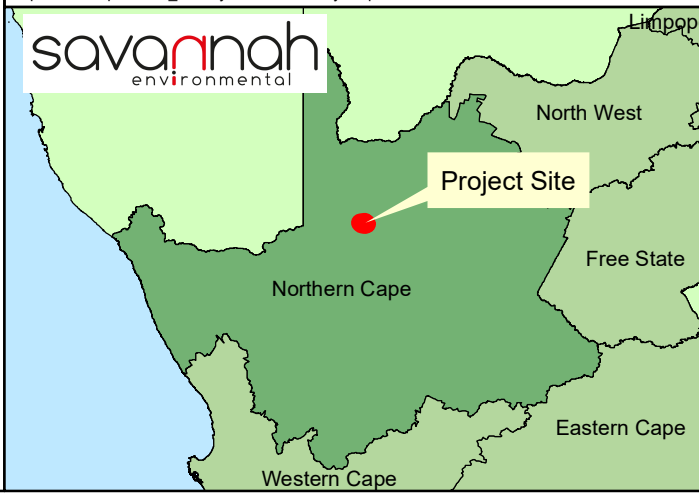
Layout:

- Shared Access (4.5km (l) / 6m (w))
- Internal Access Roads (10km (l) / 6m (w))
- Power Line (9.5km)
- Substation (1ha)
- 300m Power Line Corridor
- Energy Storage Area (2ha)
- Construction Camp & Lay Down Area (2ha)
- Solar Field (230ha)

Environmental Sensitivities:

- High (Avifauna)
- Very High (Ecology & Avifauna)
- High (Ecology & Avifauna)
- Medium (Ecology & Avifauna)
- Low (Ecology & Avifauna)

Scale: 1:15 000
 Projection: LO21_WGS 1984
 Map Ref.: Allepad PV3_A3 Layout & Sensitivity Map



Allepad PV Three Environmental Sensitivity and Layout Map

Legend

- Railway Line
- Dry Watercourse
- Non-Perennial Watercourse
- National Road
- Regional Road
- Erf 5315 Upington
- Cadastral Boundary

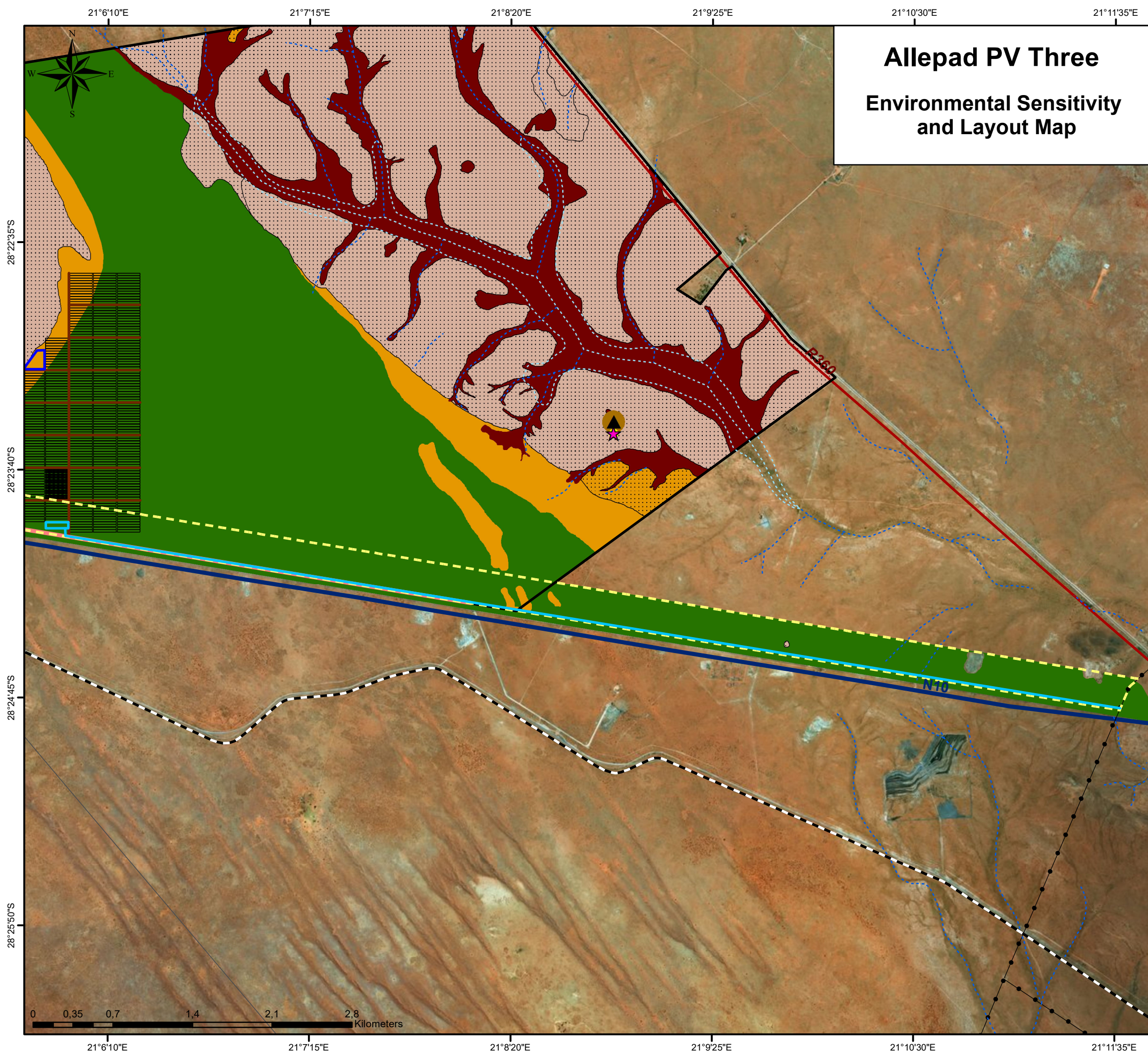
Layout:

- Shared Access (4.5km (l) / 6m (w))
- Internal Access Roads (10km (l) / 6m (w))
- Power Line (9.5km)
- Substation (1ha)
- 300m Power Line Corridor
- Energy Storage Area (2ha)
- Construction Camp & Lay Down Area (2ha)
- Solar Field (230ha)

Environmental Sensitivities:

- Possible Burial Site (Site 0506)
- No-Go Area (Site 0506 30m Buffer - Heritage)
- Concentration of Artefacts (Site 0526)
- No-Go Area (Site 0526 100m Buffer - Heritage)
- High (Avifauna)
- Very High (Ecology & Avifauna)
- High (Ecology & Avifauna)
- Medium (Ecology & Avifauna)
- Low (Ecology & Avifauna)

Scale: 1:32 886
Projection: LO21_WGS 1984
Map Ref.: Allepad PV3_A3 Layout & Sensitivity Map (power line)



Allepad PV Three Cumulative Map

Legend

-  Project Site
-  300m Power Line Corridor
-  Cadastral Boundary
-  Eskom Substation
-  Upington Substation (under construction)
-  Existing Power line
-  National Road
-  Regional Road
-  Main Road
-  Perennial Watercourse
- Government Planning**
-  CEF - Upington Solar Park (CSP & PV)
-  Eskom - Kiwano CSP (1xCSP)
- Approved & In Progress**
-  Sirius Solar PV - Sirius Solar PV Projects 1 & 2 (2xPV)
-  SolarReserve - Rooipunt (1xCSP)
-  28 Degrees Energy S-Kol PV Plant (1xPV)
-  AEP - Bloemsmond Solar 1 & 2 (2xPV)
-  Solis Power - Solis I & II (2xCSP)
-  Abengoa - Kai Garib (1xCSP)
- Preferred Bidder**
-  Scatec - Dyasonsklip (2xPV)
- Operational**
-  Abengoa - Khi Solar One (1xCSP)
-  ACSA PV - Upington Airport Solar PV (1xPV)

Scale: 1:200 000
 Projection: LO27_WGS 1984
 Map Ref.: Allepad PV

