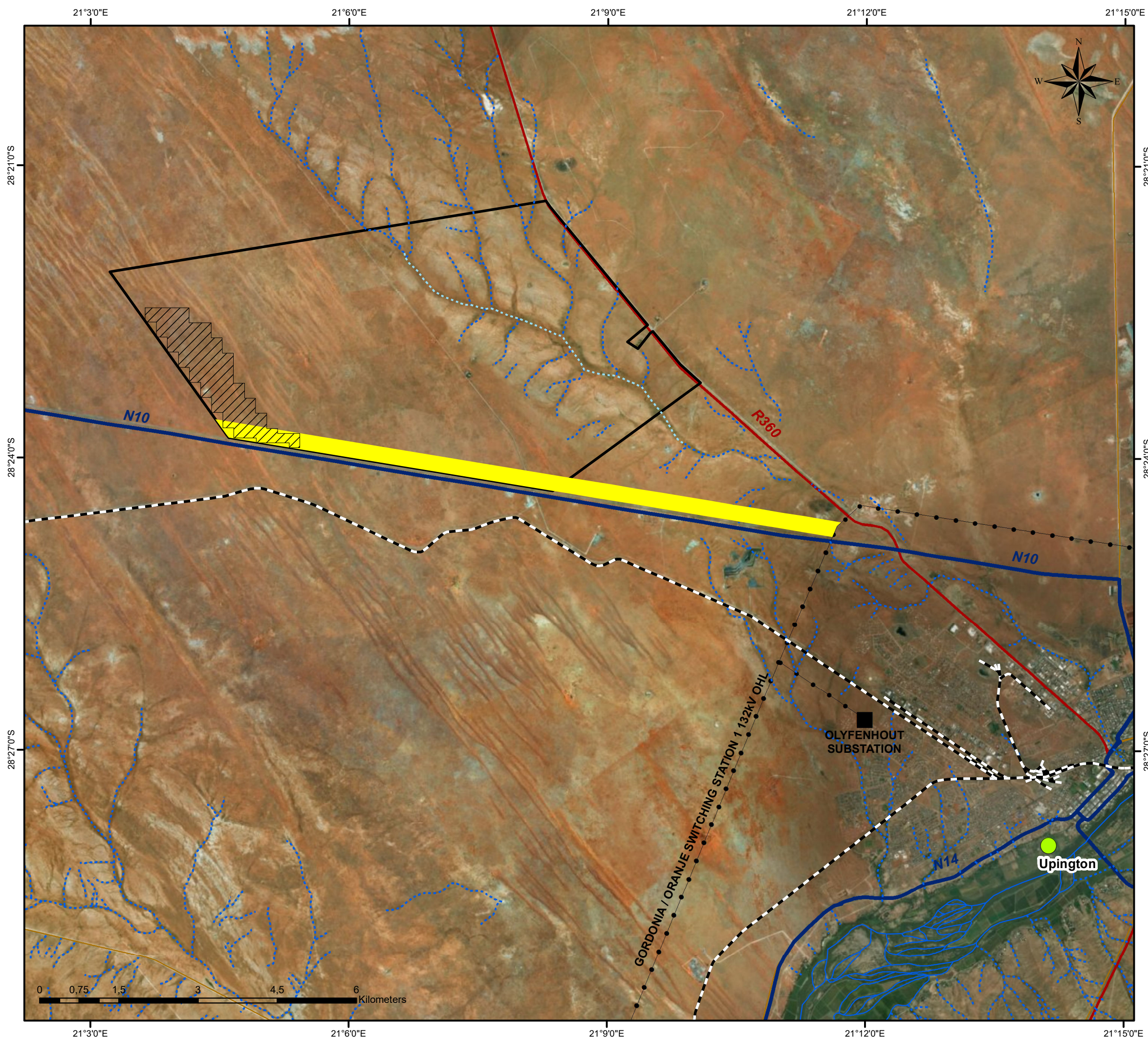


# Allepad PV Four Locality Map

## Legend

- Towns
- Eskom Substation
- Railway Line
- Dry Watercourse
- Non-Perennial Watercourse
- Perennial Watercourse
- Existing Power line
- National Road
- Regional Road
- Main Road
- 300m Power Line Corridor
- Allepad PV Four Project Site
- Erf 5315 Upington

Scale: 1:70 000  
 Projection: LO21\_WGS 1984  
 Map Ref.: Allepad PV\_A3 Locality Map





# Allepad PV Four

## Layout Map

### Legend

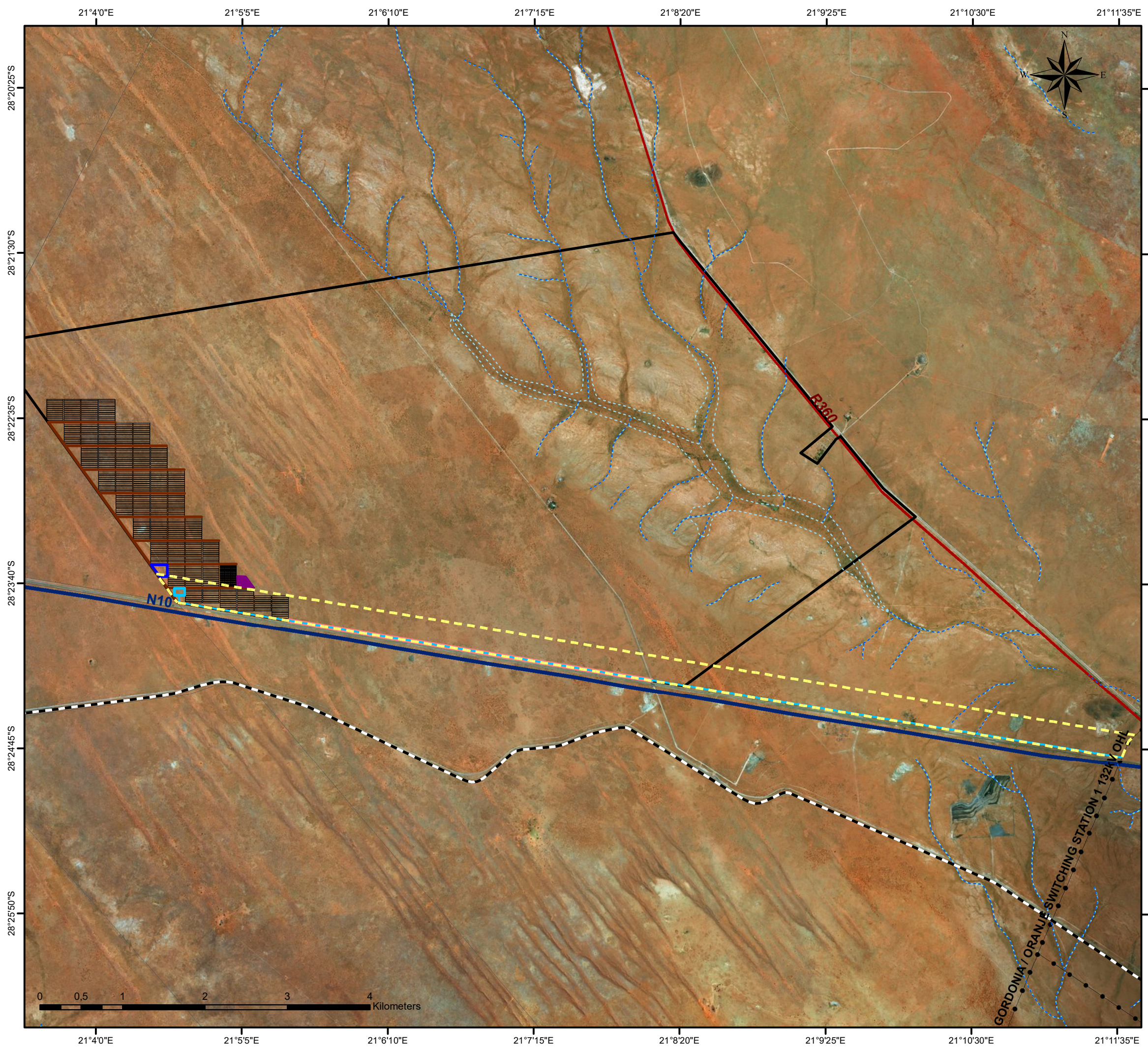
- Railway Line
- Existing Power line
- National Road
- Regional Road
- Perennial Watercourse
- Non-Perennial Watercourse

- Erf 5315 Upington
- Cadastral Boundary

### Layout:

- Shared Access (4.5KM (l) / 6m (w))
- Internal Access Roads (12.3km / 6m)
- Power Line (11.7km)
- Substation (1ha)
- 300m Power Line Corridor
- Construction Camp & Lay Down Area (2ha)
- Energy Storage Area (2ha)
- Solar Field (234ha)

Scale: 1:45 047  
Projection: LO21\_WGS 1984  
Map Ref.: Allepad PV4\_A3 Layout Map







# Allepad PV Four

## Environmental Sensitivity Map

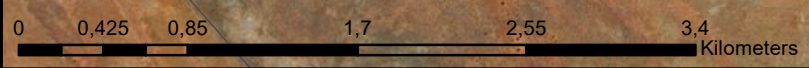
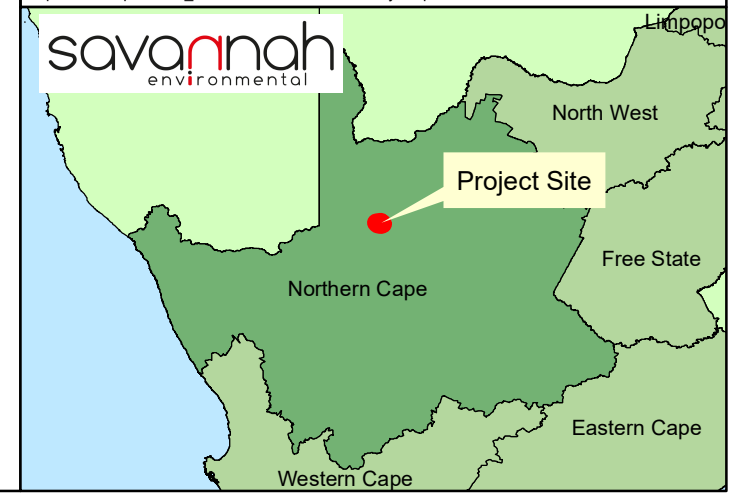
### Legend

- Railway Line
- Dry Watercourse
- Non-Perennial Watercourse
- National Road
- Regional Road
- Erf 5315 Upington
- Cadastral Boundary

### Environmental Sensitivities:

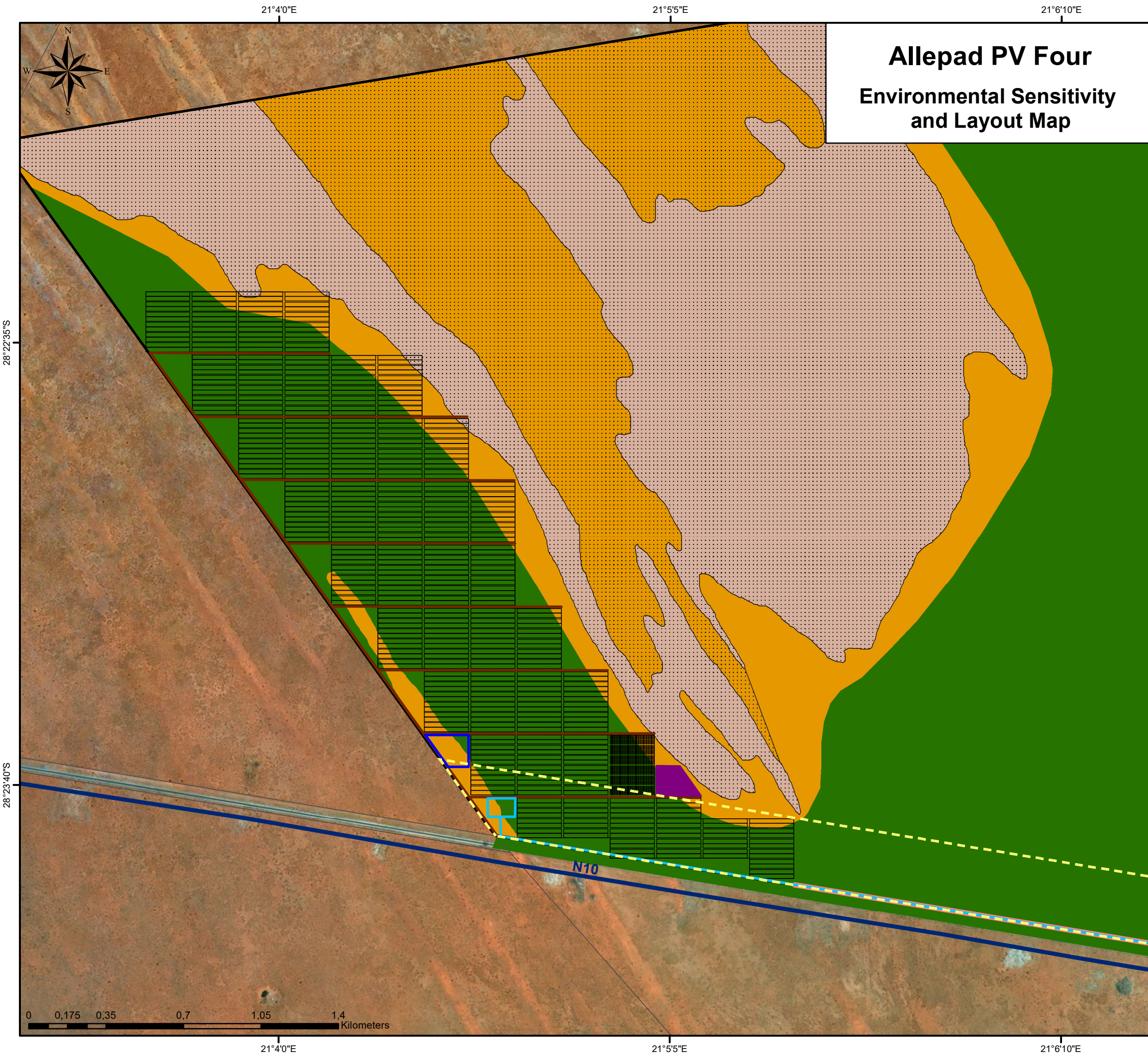
- Possible Burial Site (Site 0506)
- No-Go Area (Site 0506 30m Buffer - Heritage)
- Concentration of Artefacts (Site 0526)
- No-Go Area (Site 0526 100m Buffer - Heritage)
- High (Avifauna)
- Very High (Ecology & Avifauna)
- High (Ecology & Avifauna)
- Medium (Ecology & Avifauna)
- Low (Ecology & Avifauna)

Scale: 1:38 000  
 Projection: LO21\_WGS 1984  
 Map Ref.: Allepad PV4\_A3 Environmental Sensitivity Map





# Allepad PV Four Environmental Sensitivity and Layout Map



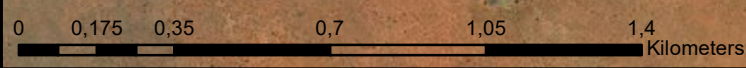
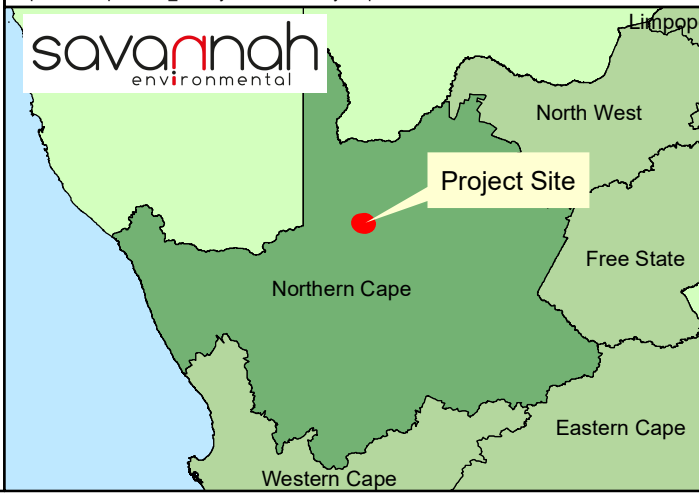
## Legend

- Dry Watercourse
  - Non-Perennial Watercourse
  - National Road
  - Erf 5315 Upington
  - Cadastral Boundary
- Layout:**
- Shared Access (4.5KM (l) / 6m (w))
  - Internal Access Roads (12.3km / 6m)
  - Power Line (11.7km)
  - Substation (1ha)
  - 300m Power Line Corridor
  - Energy Storage Area (2ha)
  - Construction Camp & Lay Down Area (2ha)
  - Solar Field (234ha)

## Environmental Sensitivities:

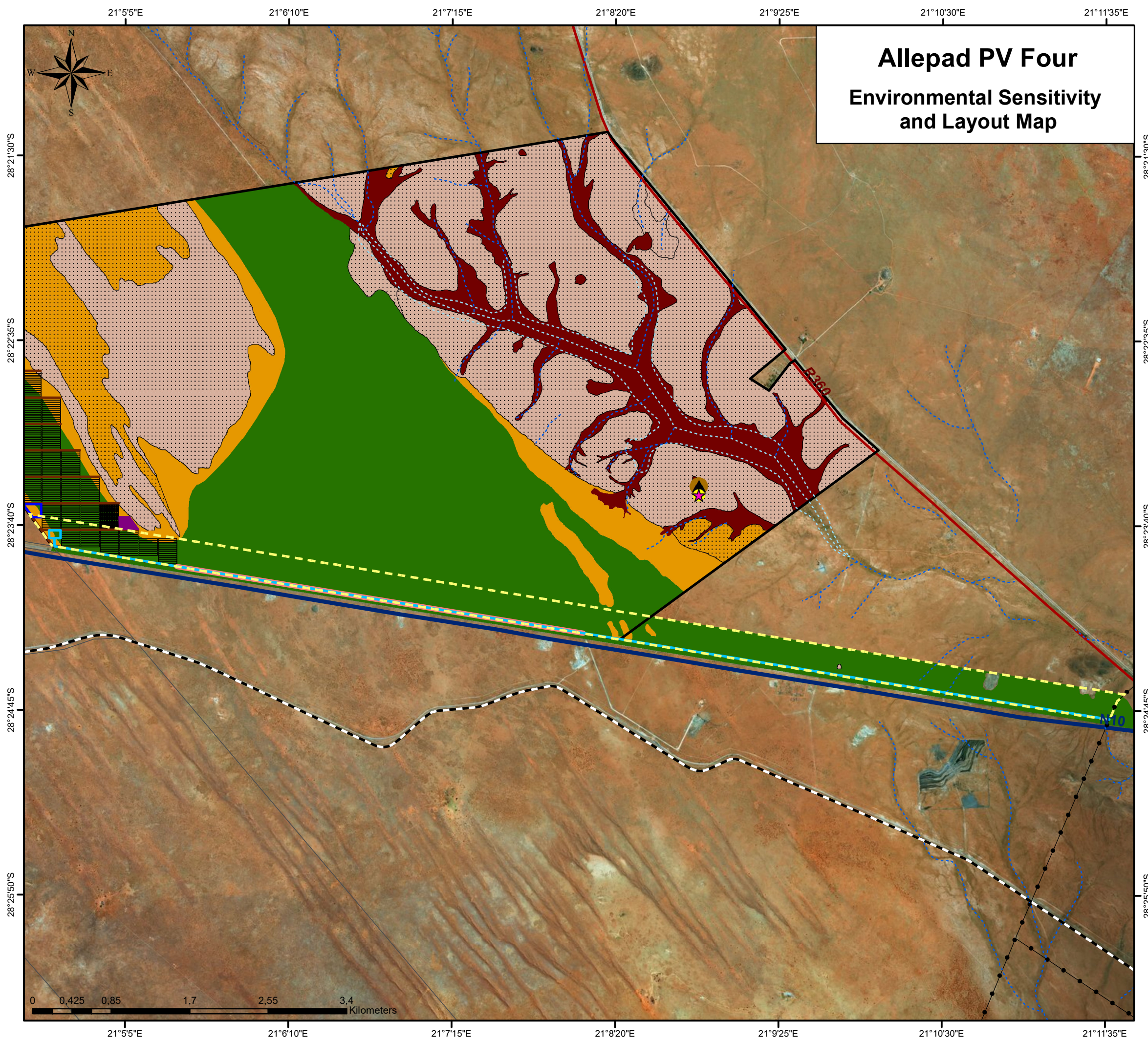
- High (Avifauna)
- High (Ecology & Avifauna)
- Medium (Ecology & Avifauna)
- Low (Ecology & Avifauna)

Scale: 1:17 000  
Projection: LO21\_WGS 1984  
Map Ref.: Allepad PV4\_A3 Layout & Sensitivity Map

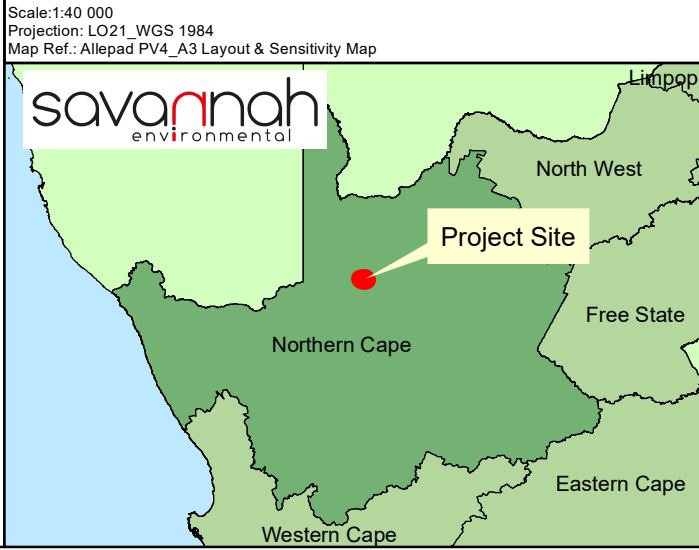




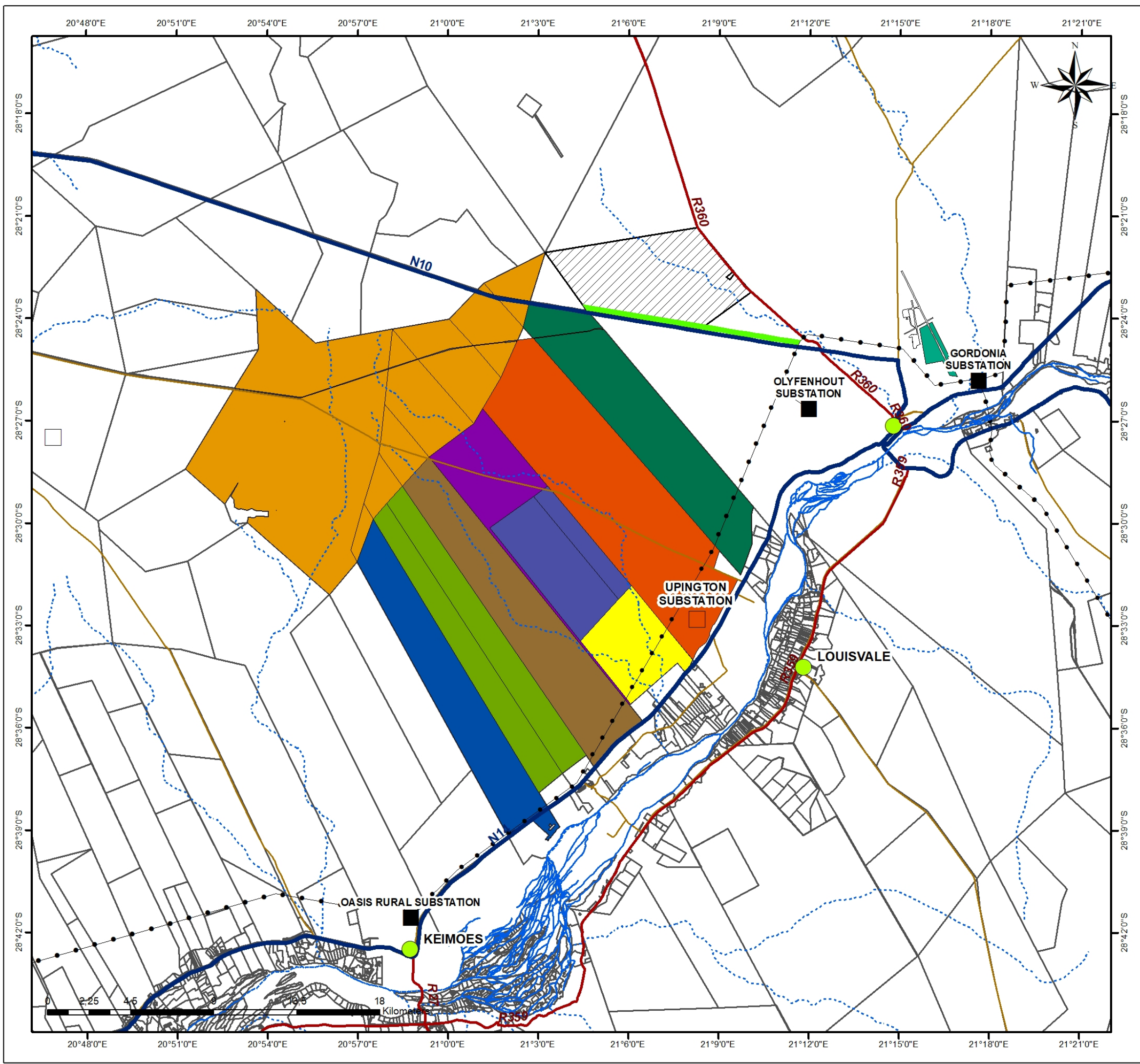
# Allepad PV Four Environmental Sensitivity and Layout Map



- ### Legend
- Railway Line
  - Dry Watercourse
  - Non-Perennial Watercourse
  - National Road
  - Regional Road
  - Erf 5315 Upington
  - Cadastral Boundary
- ### Layout:
- Shared Access (4.5KM (l) / 6m (w))
  - Internal Access Roads (12.3km / 6m)
  - Power Line (11.7km)
  - Substation (1ha)
  - 300m Power Line Corridor
  - Energy Storage Area (2ha)
  - Construction Camp & Lay Down Area (2ha)
  - Solar Field (234ha)
- ### Environmental Sensitivities:
- Possible Burial Site (Site 0506)
  - No-Go Area (Site 0506 30m Buffer - Heritage)
  - Concentration of Artefacts (Site 0526)
  - No-Go Area (Site 0526 100m Buffer - Heritage)
  - High (Avifauna)
  - Very High (Ecology & Avifauna)
  - High (Ecology & Avifauna)
  - Medium (Ecology & Avifauna)
  - Low (Ecology & Avifauna)







# Allepad PV Four Cumulative Map

## Legend

-  Project Site
-  300m Power Line Corridor
-  Cadastral Boundary
-  Eskom Substation
-  Upington Substation (under construction)
-  Existing Power line
-  National Road
-  Regional Road
-  Main Road
-  Perennial Watercourse
- Government Planning**
-  CEF - Upington Solar Park (CSP & PV)
-  Eskom - Kiwano CSP (1xCSP)
- Approved & In Progress**
-  Sirius Solar PV - Sirius Solar PV Projects 1 & 2 (2xPV)
-  SolarReserve - Rooipunt (1xCSP)
-  28 Degrees Energy S-Kol PV Plant (1xPV)
-  AEP - Bloemsmond Solar 1 & 2 (2xPV)
-  Solis Power - Solis I & II (2xCSP)
-  Abengoa - Kai Garib (1xCSP)
- Preferred Bidder**
-  Scatec - Dyasonsklip (2xPV)
- Operational**
-  Abengoa - Khi Solar One (1xCSP)
-  ACSA PV - Upington Airport Solar PV (1xPV)

Scale: 1:200 000  
 Projection: LO27\_WGS 1984  
 Map Ref.: Allepad PV

