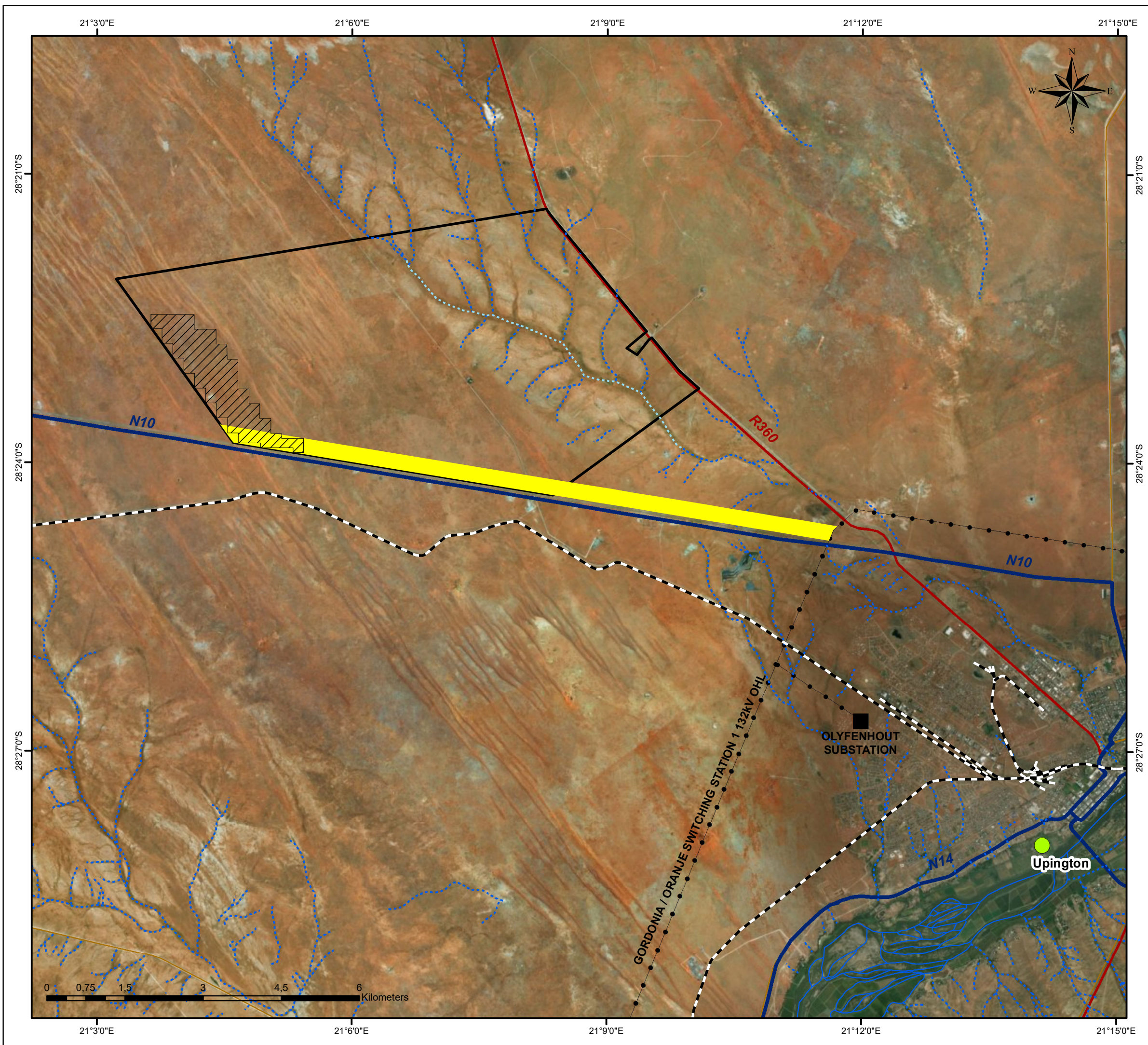


Allepad PV Four Locality Map

Legend

- Towns
- Eskom Substation
- Railway Line
- Dry Watercourse
- Non-Perennial Watercourse
- Perennial Watercourse
- Existing Power line
- National Road
- Regional Road
- Main Road
- 300m Power Line Corridor
- Allepad PV Four Project Site
- Erf 5315 Upington

Scale: 1:70 000
 Projection: LO21_WGS 1984
 Map Ref.: Allepad PV_A3 Locality Map



Allepad PV Four

Layout Map

Legend

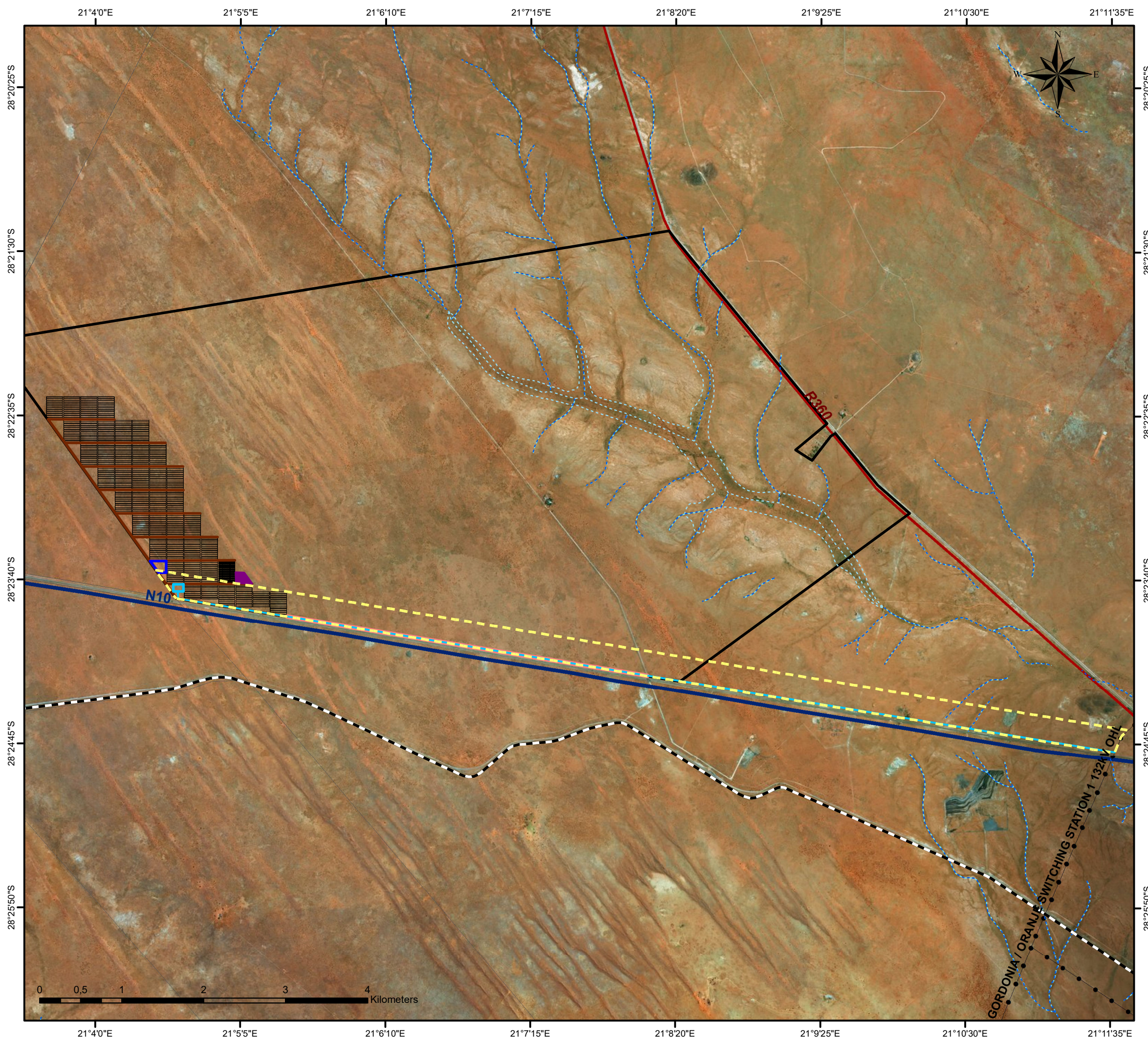
- Railway Line
- Existing Power line
- National Road
- Regional Road
- Perennial Watercourse
- Non-Perennial Watercourse

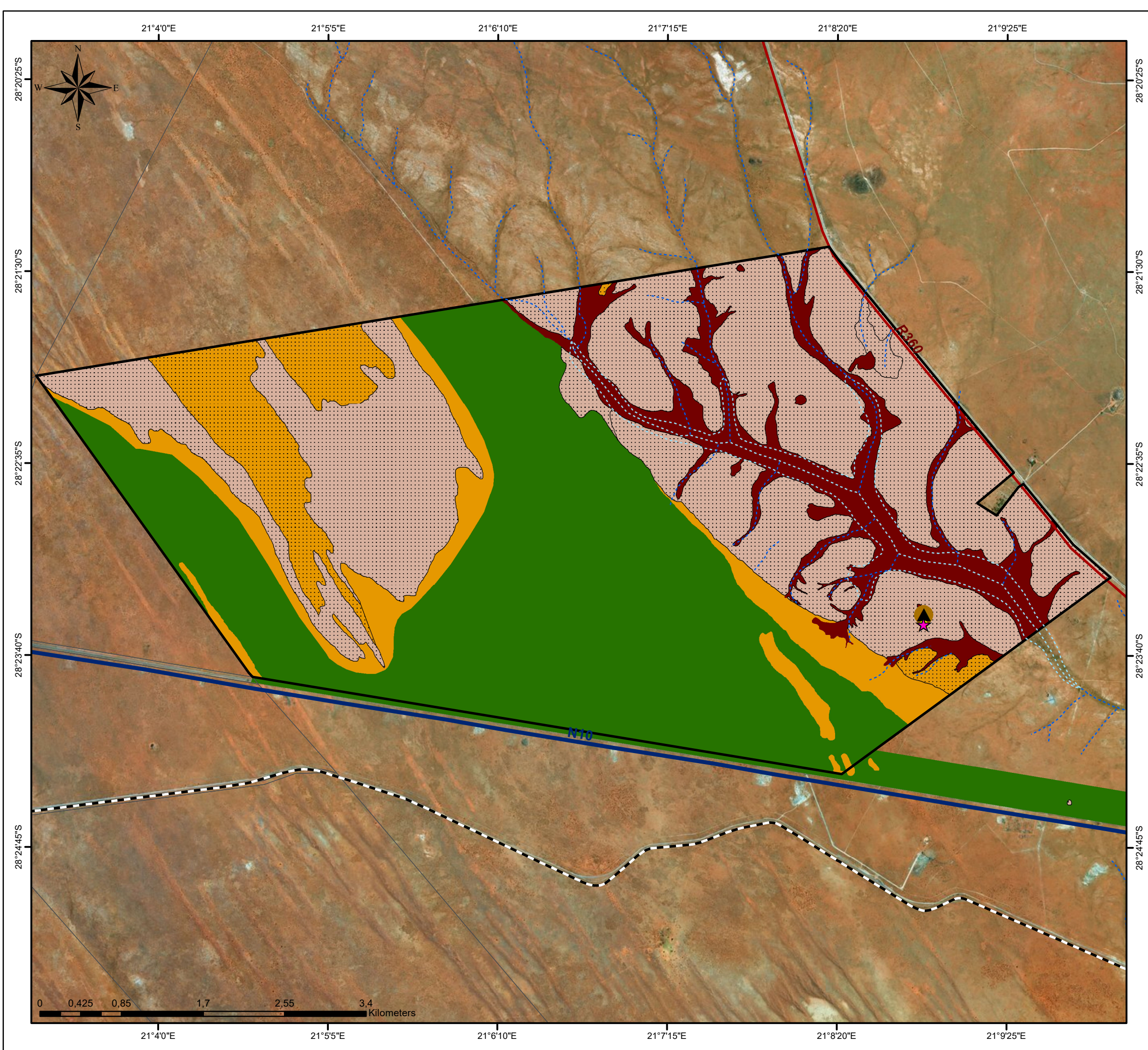
- Erf 5315 Upington
- Cadastral Boundary

Layout:

- Shared Access (4.5KM (l) / 6m (w))
- Internal Access Roads (12.3km / 6m)
- Power Line (11.7km)
- Substation (1ha)
- 300m Power Line Corridor
- Construction Camp & Lay Down Area (2ha)
- Energy Storage Area (2ha)
- Solar Field (234ha)

Scale: 1:45 047
Projection: LO21_WGS 1984
Map Ref.: Allepad PV4_A3 Layout Map





Allepad PV Four

Environmental Sensitivity Map

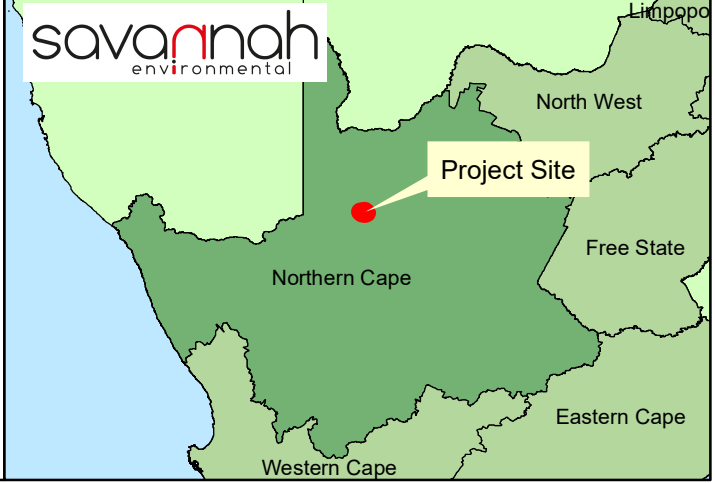
Legend

- Railway Line
- Dry Watercourse
- Non-Perennial Watercourse
- National Road
- Regional Road
- Erf 5315 Upington
- Cadastral Boundary

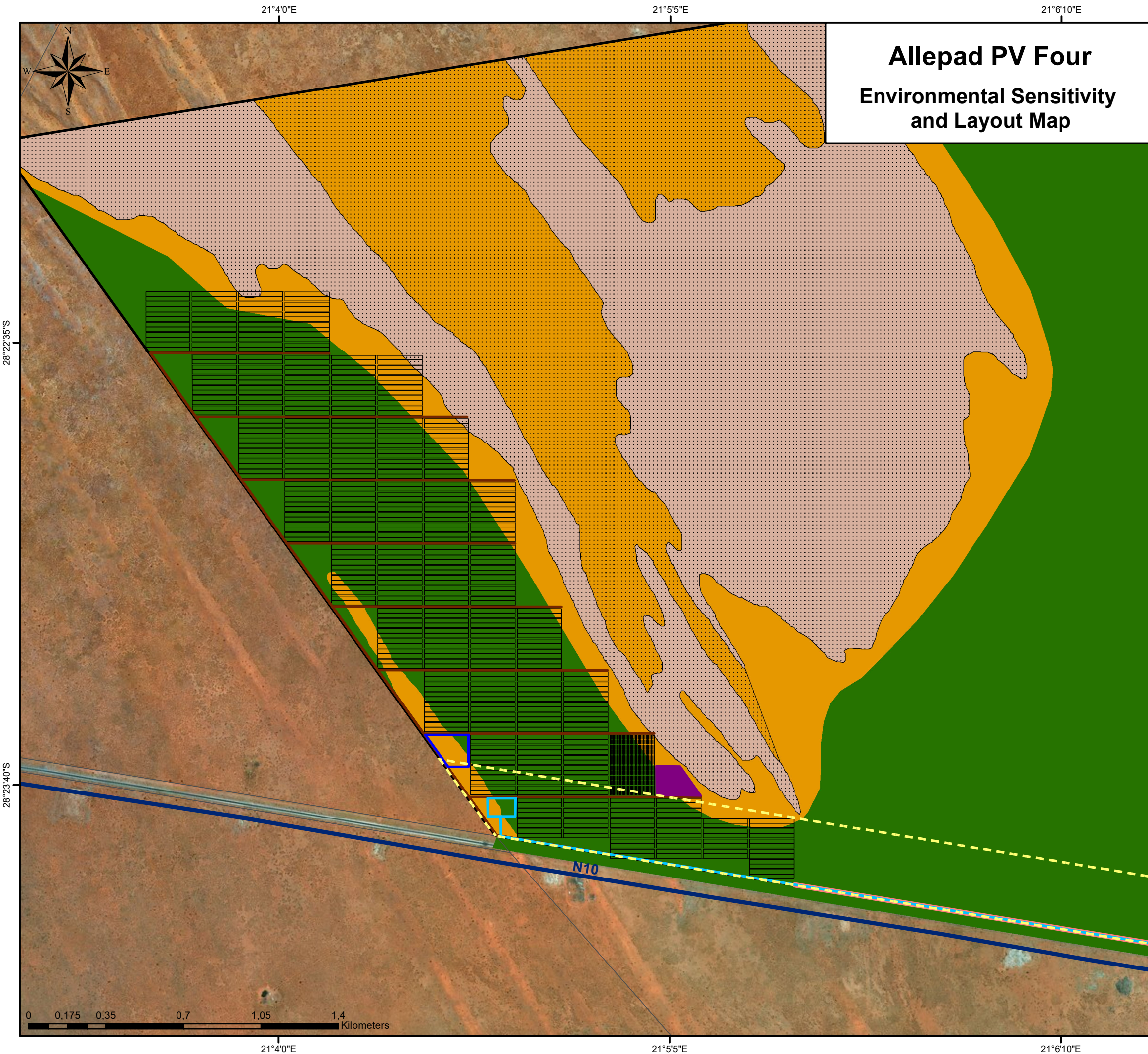
Environmental Sensitivities:

- Possible Burial Site (Site 0506)
- No-Go Area (Site 0506 30m Buffer - Heritage)
- Concentration of Artefacts (Site 0526)
- No-Go Area (Site 0526 100m Buffer - Heritage)
- High (Avifauna)
- Very High (Ecology & Avifauna)
- High (Ecology & Avifauna)
- Medium (Ecology & Avifauna)
- Low (Ecology & Avifauna)

Scale: 1:38 000
 Projection: LO21_WGS 1984
 Map Ref.: Allepad PV4_A3 Environmental Sensitivity Map



Allepad PV Four Environmental Sensitivity and Layout Map



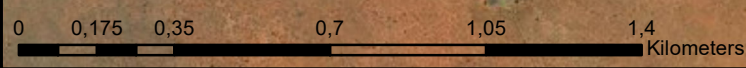
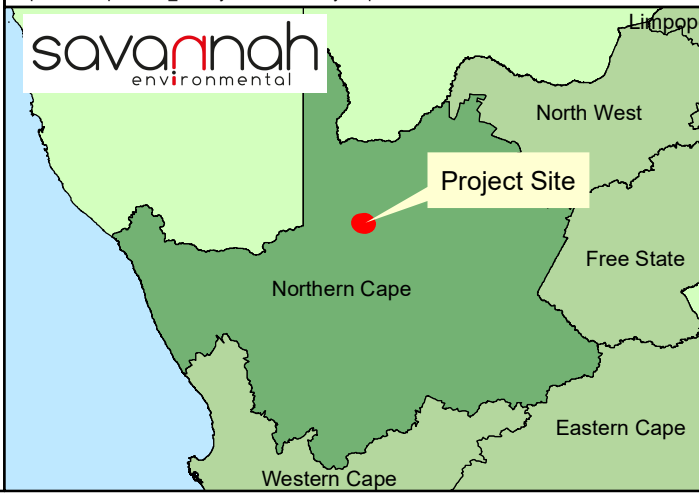
Legend

- Dry Watercourse
 - Non-Perennial Watercourse
 - National Road
 - Erf 5315 Upington
 - Cadastral Boundary
- Layout:**
- Shared Access (4.5KM (l) / 6m (w))
 - Internal Access Roads (12.3km / 6m)
 - Power Line (11.7km)
 - Substation (1ha)
 - 300m Power Line Corridor
 - Energy Storage Area (2ha)
 - Construction Camp & Lay Down Area (2ha)
 - Solar Field (234ha)

Environmental Sensitivities:

- High (Avifauna)
- High (Ecology & Avifauna)
- Medium (Ecology & Avifauna)
- Low (Ecology & Avifauna)

Scale: 1:17 000
 Projection: LO21_WGS 1984
 Map Ref.: Allepad PV4_A3 Layout & Sensitivity Map

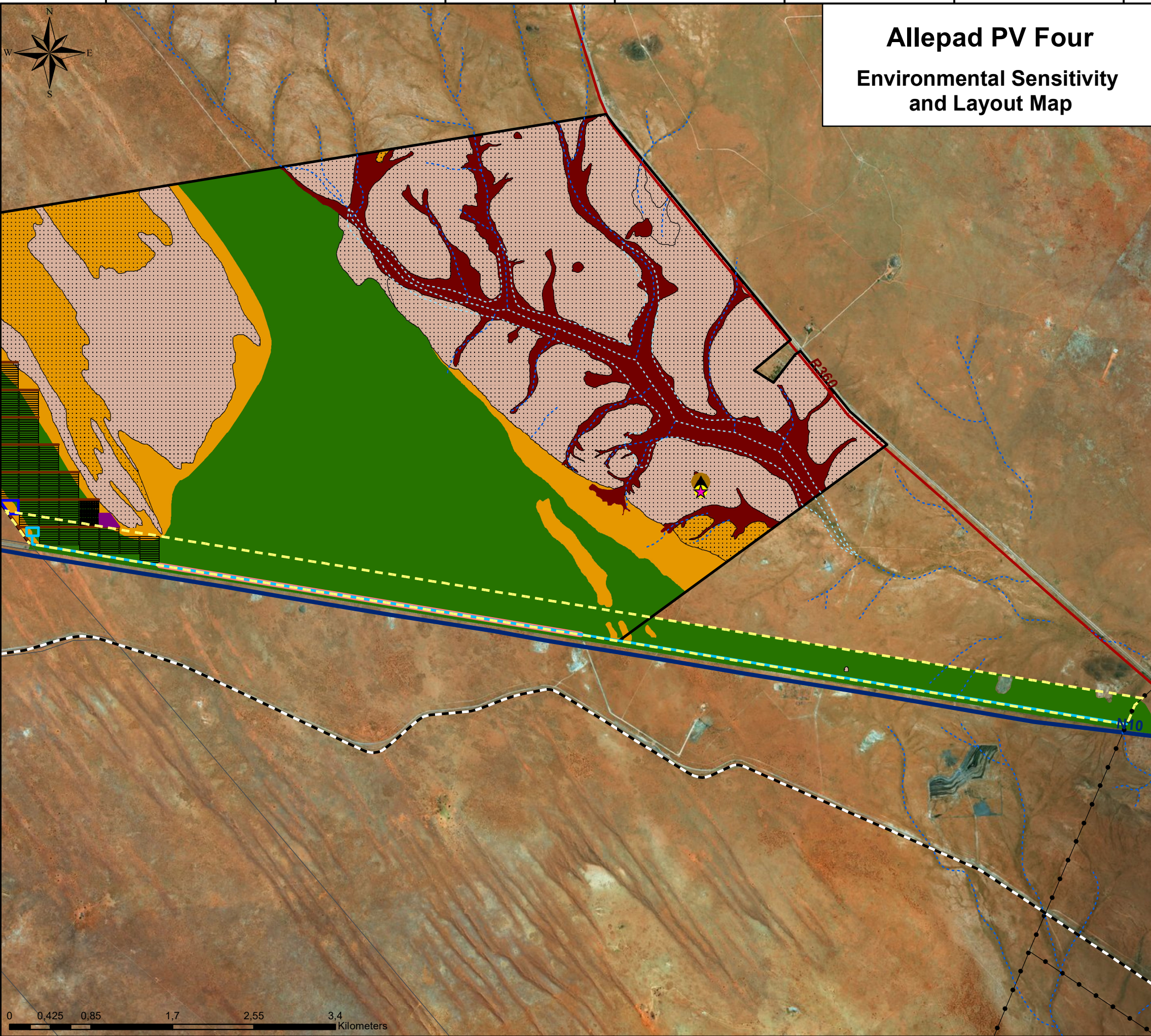
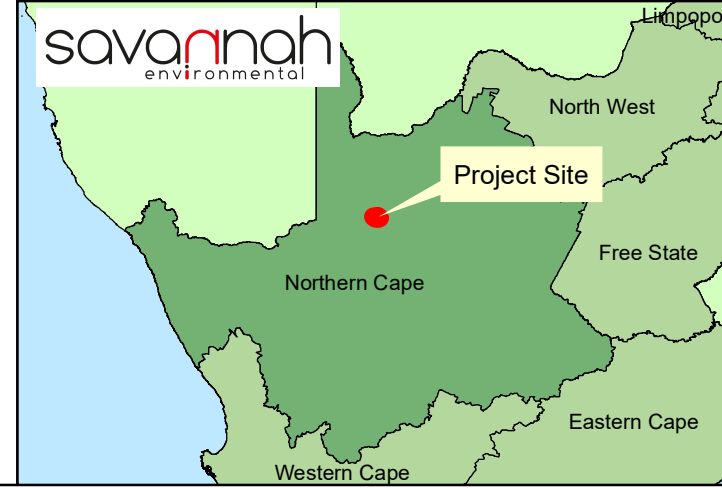


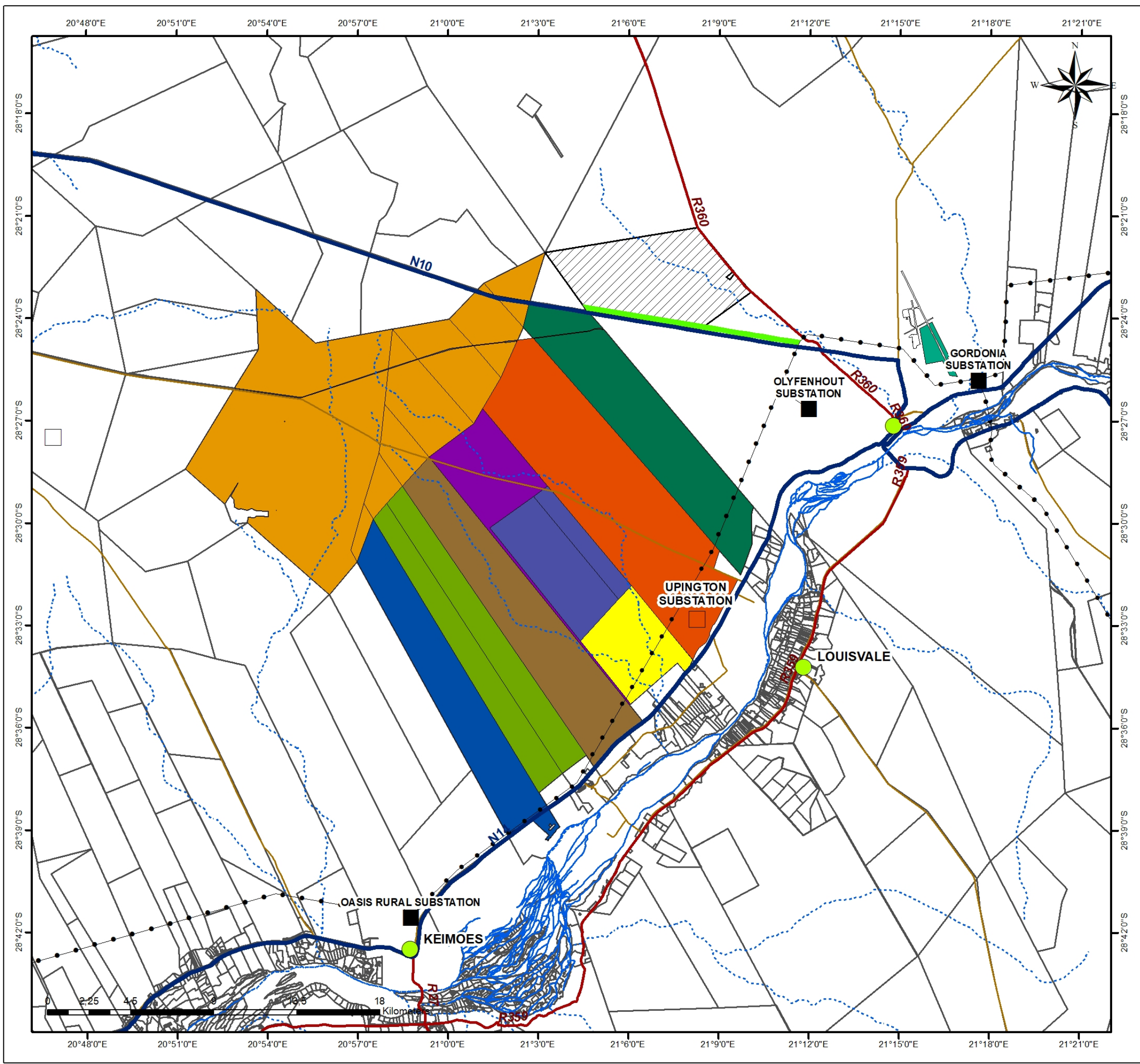
Allepad PV Four Environmental Sensitivity and Layout Map

Legend

- Railway Line
 - Dry Watercourse
 - Non-Perennial Watercourse
 - National Road
 - Regional Road
 - Erf 5315 Upington
 - Cadastral Boundary
- Layout:**
- Shared Access (4.5KM (l) / 6m (w))
 - Internal Access Roads (12.3km / 6m)
 - Power Line (11.7km)
 - Substation (1ha)
 - 300m Power Line Corridor
 - Energy Storage Area (2ha)
 - Construction Camp & Lay Down Area (2ha)
 - Solar Field (234ha)
- Environmental Sensitivities:**
- Possible Burial Site (Site 0506)
 - No-Go Area (Site 0506 30m Buffer - Heritage)
 - Concentration of Artefacts (Site 0526)
 - No-Go Area (Site 0526 100m Buffer - Heritage)
 - High (Avifauna)
 - Very High (Ecology & Avifauna)
 - High (Ecology & Avifauna)
 - Medium (Ecology & Avifauna)
 - Low (Ecology & Avifauna)

Scale: 1:40 000
 Projection: LO21_WGS 1984
 Map Ref.: Allepad PV4_A3 Layout & Sensitivity Map





Allepad PV Four Cumulative Map

Legend

- Project Site
- 300m Power Line Corridor
- Cadastral Boundary
- Eskom Substation
- Upington Substation (under construction)
- Existing Power line
- National Road
- Regional Road
- Main Road
- Perennial Watercourse
- Government Planning**
 - CEF - Upington Solar Park (CSP & PV)
 - Eskom - Kiwano CSP (1xCSP)
- Approved & In Progress**
 - Sirius Solar PV - Sirius Solar PV Projects 1 & 2 (2xPV)
 - SolarReserve - Rooipunt (1xCSP)
 - 28 Degrees Energy S-Kol PV Plant (1xPV)
 - AEP - Bloemsmond Solar 1 & 2 (2xPV)
 - Solis Power - Solis I & II (2xCSP)
 - Abengoa - Kai Garib (1xCSP)
- Preferred Bidder**
 - Scatec - Dyasonsklip (2xPV)
- Operational**
 - Abengoa - Khi Solar One (1xCSP)
 - ACSA PV - Upington Airport Solar PV (1xPV)

Scale: 1:200 000
 Projection: LO27_WGS 1984
 Map Ref.: Allepad PV

